
INFECTIOUS DISEASES WEEKLY REPORT

TOKYO IDWR

Tokyo Metropolitan Infectious Disease Surveillance Center

31 March 2011 / Number 12

Surveillance System in Tokyo, Japan

The infectious diseases which all physicians must report

All physicians must report to health centers the incidence of the diseases which are shown at page one. Health centers electronically report the individual cases to Tokyo Metropolitan Infectious Disease Surveillance Center.

The infectious diseases required to be reported by the sentinels

The numbers of patients who visit the sentinel clinics or hospitals during a week are reported to health centers in Tokyo. And they electronically report the numbers to Tokyo Metropolitan Infectious Disease Surveillance Center. We have about 400 sentinel clinics and hospitals in Tokyo.

1st Week is early January and 52nd Week is end of December.

Tokyo Metropolitan Institute of Public Health
Epidemiological Information Office

TEL:81-3-3363-3213 FAX:81-3-5332-7365

e-mail:idsc@tokyo-eiken.go.jp

URL:idsc.tokyo-eiken.go.jp/

Number of patients with the diseases which all physicians must report

Category	Diseases	Tokyo				Japan		
		9th	10th	11th	12h	Cum 2011	12h	Cum 2011
I	Ebola hemorrhagic fever							
	Crimean-Congo hemorrhagic fever							
	Smallpox							
	South American hemorrhagic fever							
	Plague							
	Marburg disease							
	Lassa fever							
II	Acute poliomyelitis							
	Tuberculosis	74	68	64	46	918	286	5,755
	Diphtheria							
	Severe Acute Respiratory Syndrome(SARS)							
	Avian influenza H5N1							
III	Cholera						1	1
	Shigellosis	3	1		2	11	1	56
	Enterohemorrhagic Escherichia coli infection	3	2	2	2	17	8	174
	Typhoid fever							2
	Paratyphoid fever		1			5	1	8
IV	Hepatitis E					4	1	15
	West Nile fever							
	Hepatitis A		3	2		11	4	91
	Echinococcosis					1		7
	Yellow fever							
	Psittacosis				1	1	1	4
	Omsk hemorrhagic fever							
	Relapsing fever							
	Kyasanur forest disease							
	Q fever							
	Rabies							
	Coccidioidomycosis					2		2
	Monkeypox							
	Hemorrhagic fever with renal syndrome							
	Western equine encephalitis							
	Tick-borne encephalitis							
	Anthrax							
	Chikungunya fever							3
	Scrub typhus(Tsutsugamushi disease)					6	2	40
	Dengue fever	1		1		7		27
	Eastern equine encephalitis							
	Avian influenza (excluding H5N1)							
	Nipah virus infection							
	Japanese spotted fever							
	Japanese encephalitis					1		1
	Hantavirus pulmonary syndrome							
	Herpes B virus infection							
	Glanders							
	Brucellosis							
	Venezuelan equine encephalitis							
	Hendra virus infection							
	Epidemic typhus							
Botulism							2	
Malaria			1		2	4	2	10
Tularemia								
Lyme disease								
Lyssavirus infection(excluding rabies)								
Rift valley fever								
Melioidosis								
Legionellosis	1		1		1	9	4	112
Leptospirosis					1	2		2
Rocky mountain spotted fever								

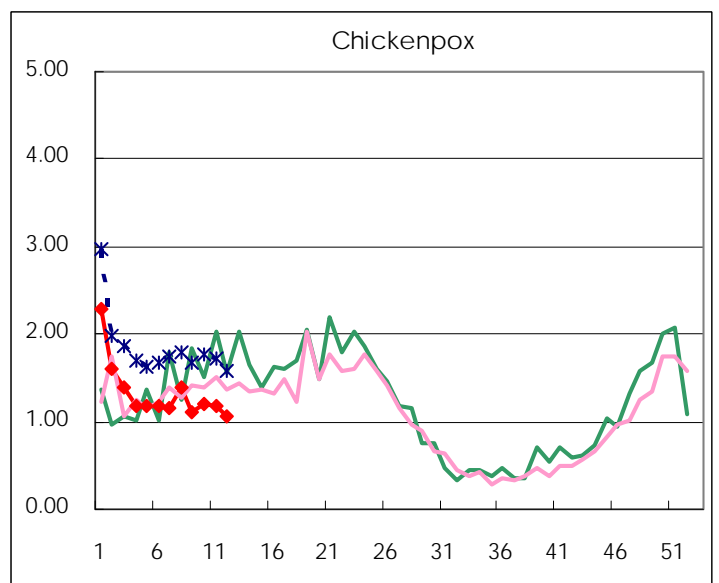
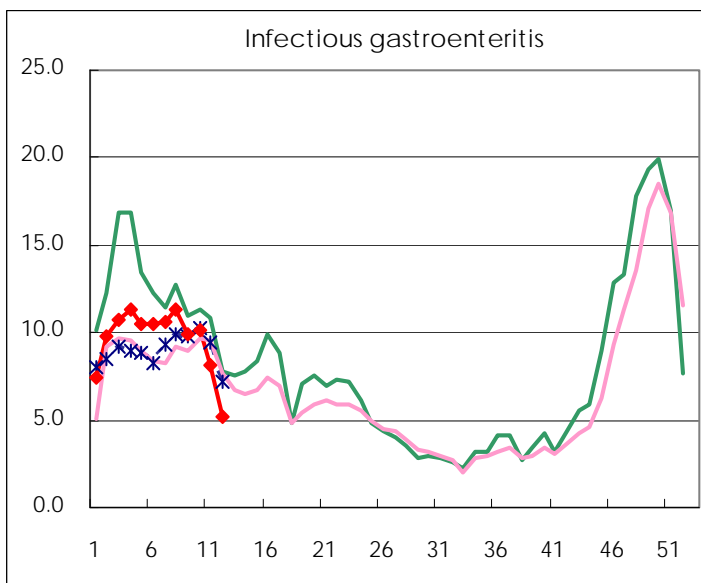
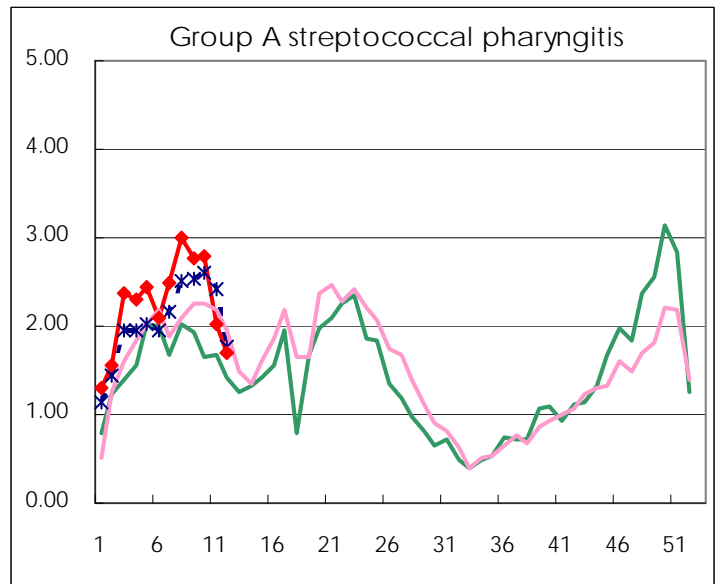
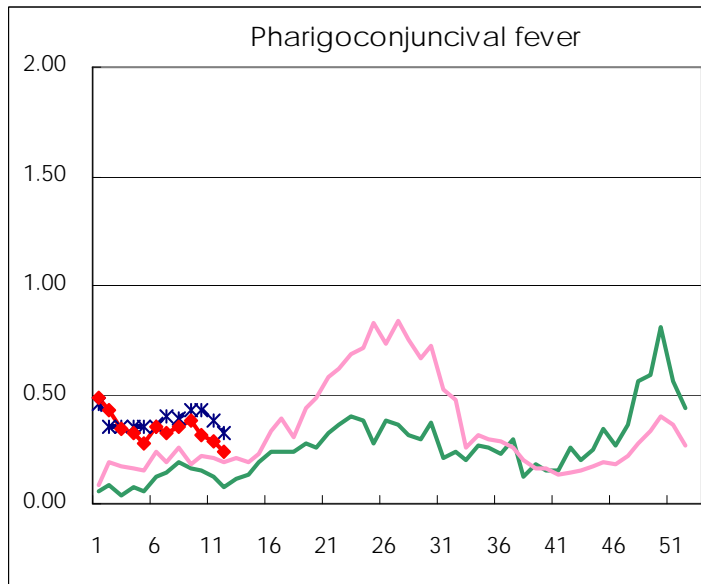
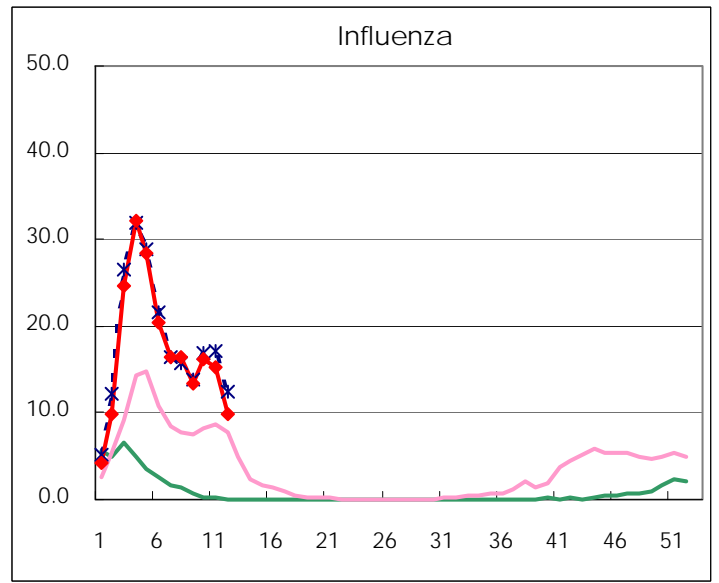
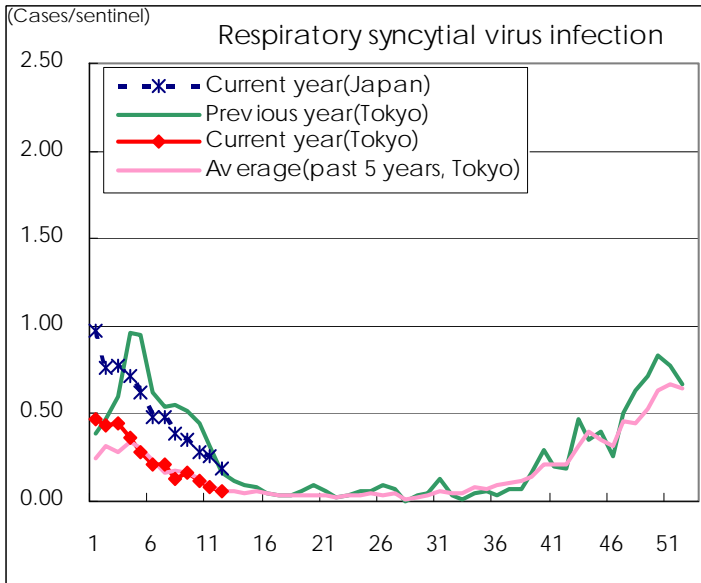
Category	Diseases	Tokyo				Japan		
		9th	10th	11th	12h	Cum 2011	12h	Cum 2011
V	Amebiasis	8	2	5	3	39	4	160
	Viral hepatitis(excluding hepatitis A and E)	1			1	7	1	53
	Acute encephalitis(excluding JE and WNE)					6	4	88
	Cryptosporidiosis					1		2
	Creutzfeldt-Jakob disease	2				5	1	24
	Severe invasive streptococcal infections(TSLS)		2	1		11	1	56
	Acquired immunodeficiency syndrome (AIDS)	9	10	4	5	106	8	298
	Giardiasis					3		15
	Meningococcal meningitis							1
	Congenital rubella syndrome							
	Syphilis	4	5	4	2	44	8	145
	Tetanus		1			1	2	11
	Vancomycin-resistant S. aureus infection							
	Vancomycin-resistant Enterococcus infection							12
	Rubella		1			2	1	35
Measles	1	2	2	1	21	5	89	
Novel Flu	Novel influenza (pandemic A/H1N1 2009)	—	—	—	—	—	—	—

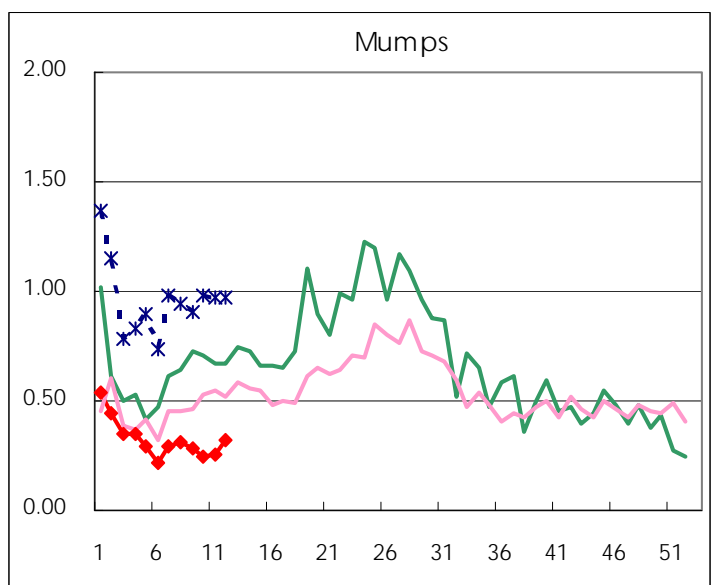
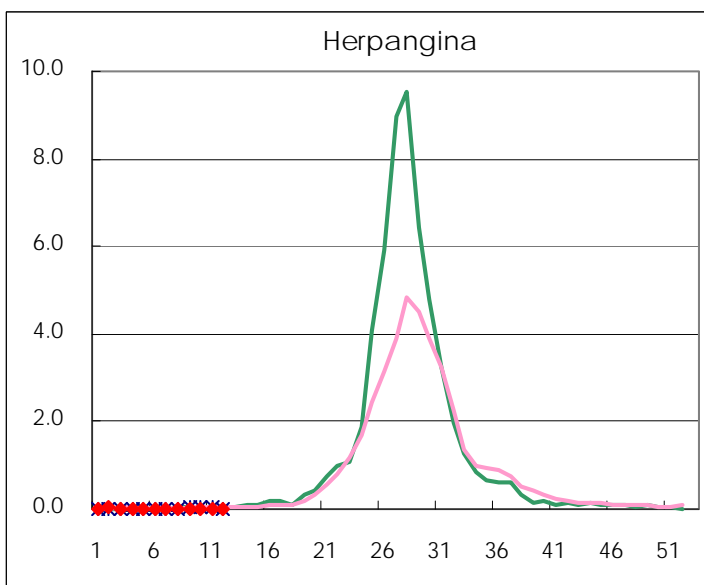
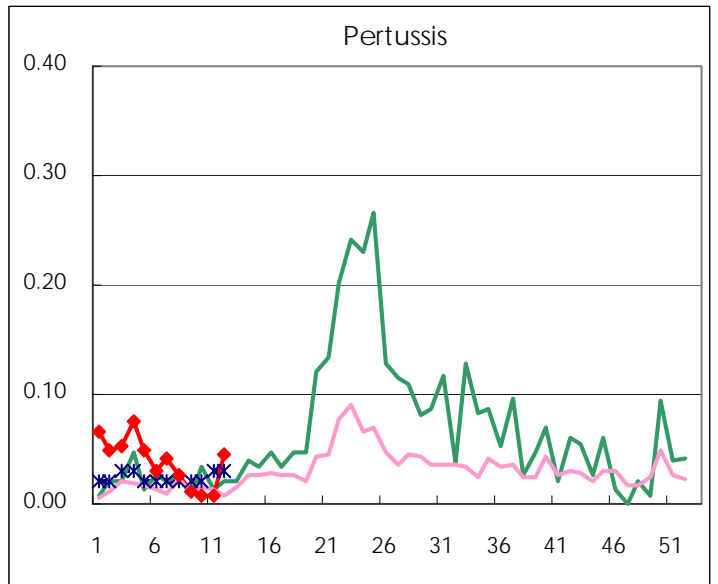
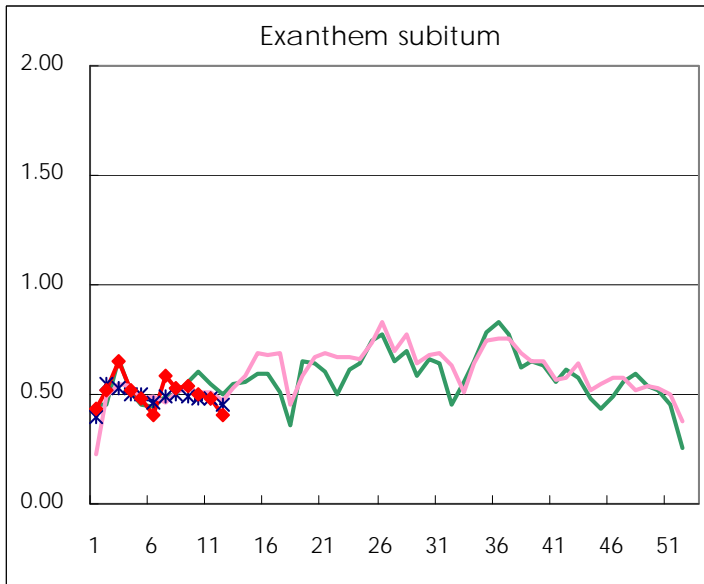
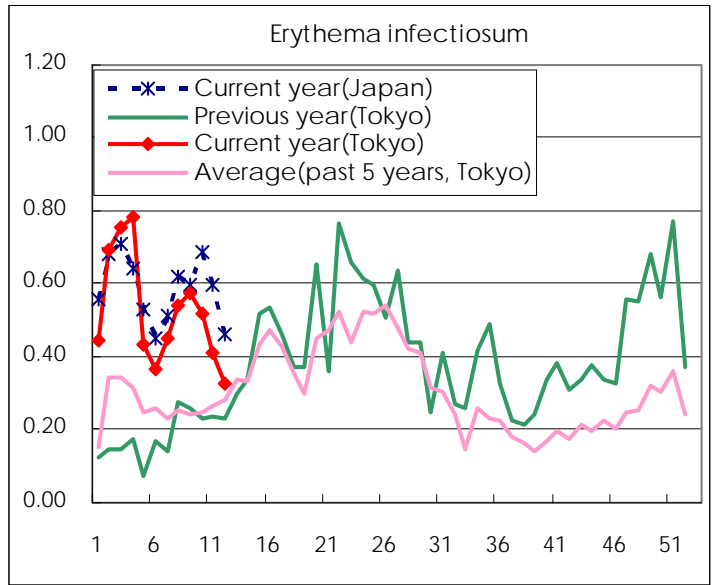
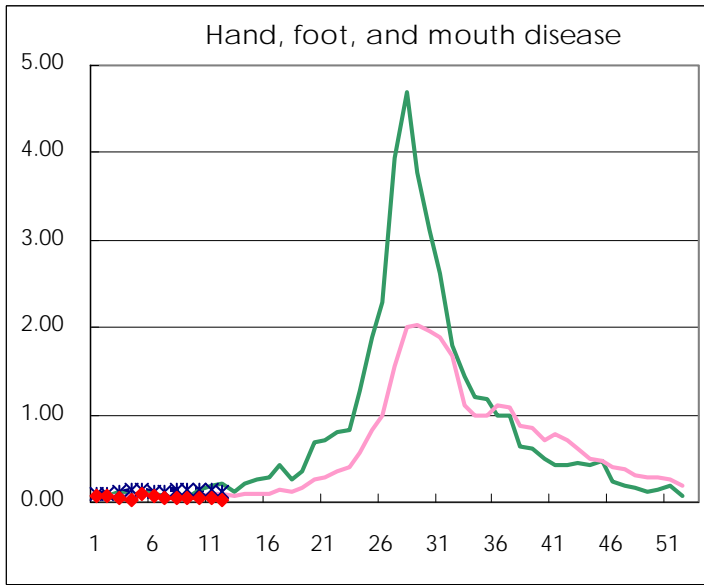
Number of patients with the diseases to be reported
by the designated clinics and hospitals

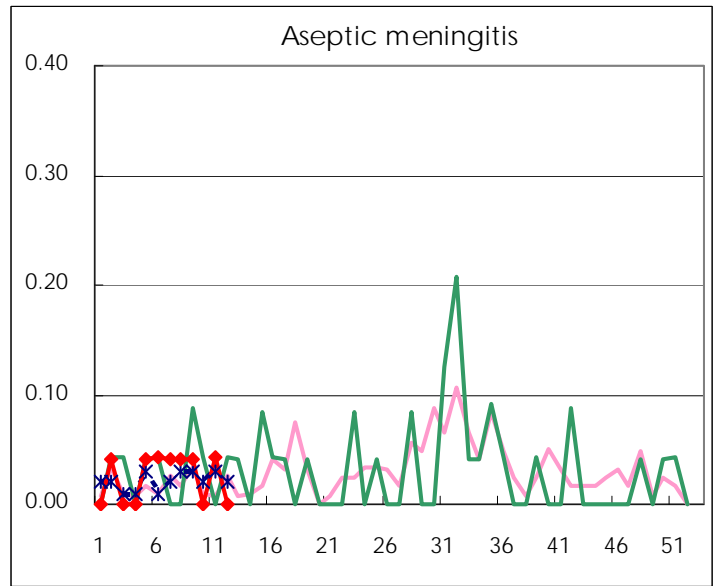
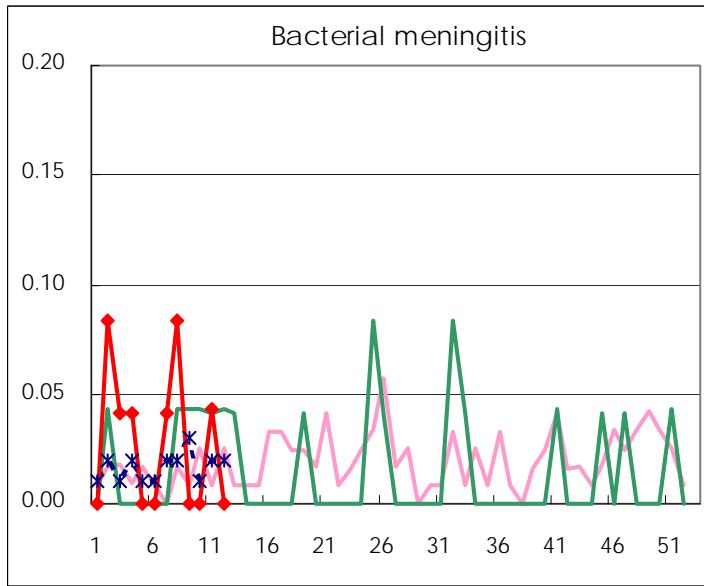
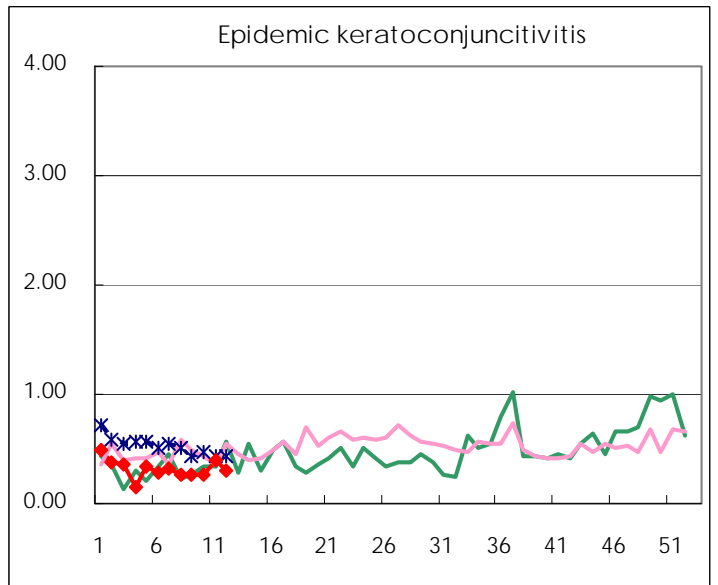
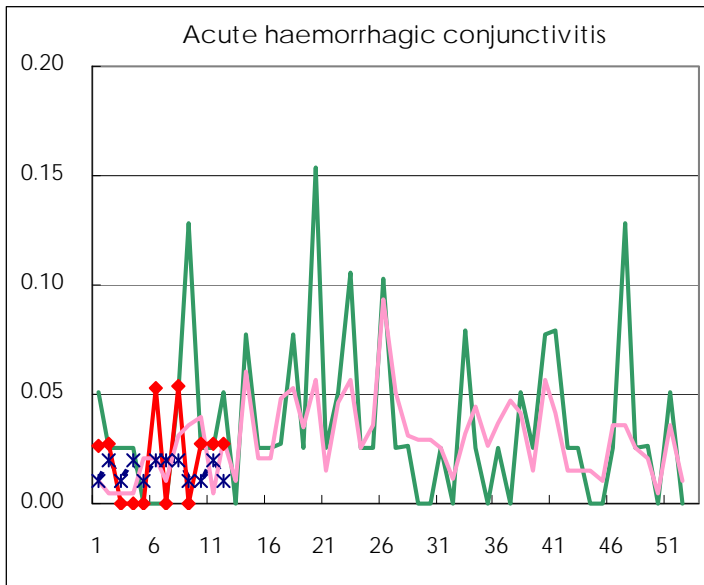
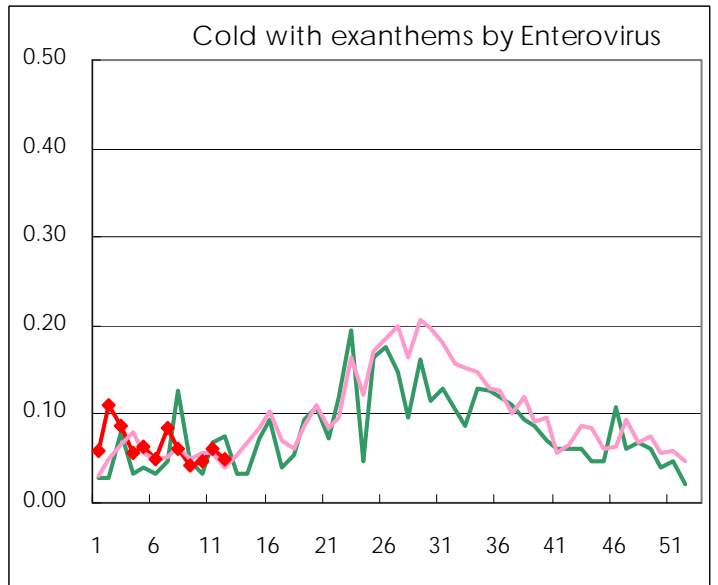
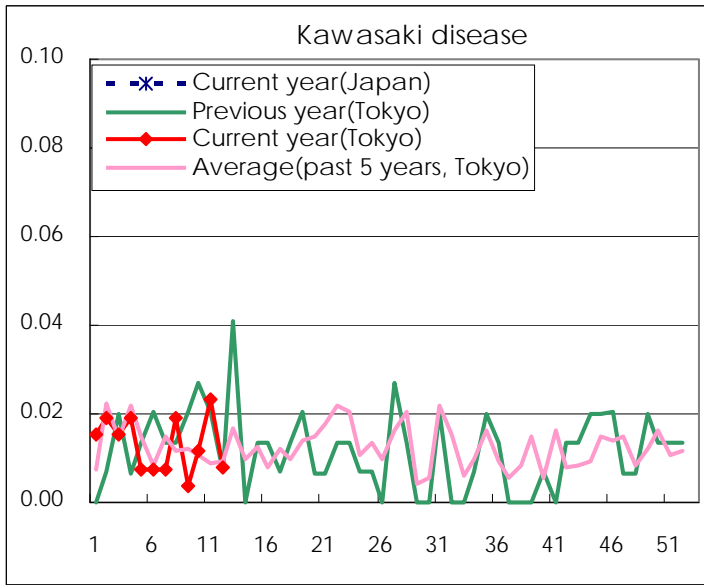
Diseases	2011				
	9th	10th	11th	12h	/sentinel
Respiratory syncytial virus infection	42	29	22	16	0.06
Pharyngoconjunctival fever	100	81	73	63	0.24
Group A streptococcal pharyngitis	727	724	524	443	1.70
Infectious gastroenteritis	2586	2,626	2,110	1,347	5.18
Chickenpox	291	312	306	279	1.07
Hand, foot, and mouth disease	15	13	10	5	0.02
Erythema infectiosum	150	135	107	85	0.33
Exanthem subitum	140	129	124	105	0.40
Pertussis	3	2	2	12	0.05
Herpangina	3	5	2	2	0.01
Mumps	74	63	66	83	0.32
Cold with exanthems by Enterovirus	11	12	16	13	0.05
Kawasaki disease	1	3	6	2	0.01
Influenza	5,602	6,730	6,316	4,034	9.74
Acute hemorrhagic conjunctivitis		1	1	1	0.03
Epidemic keratoconjunctivitis	10	10	14	11	0.30
Bacterial meningitis			1		
Aseptic meningitis	1		1		
Mycoplasma pneumonia	10	15	10	8	0.33
Chlamydial pneumonia (excluding psittacosis)	2	1			

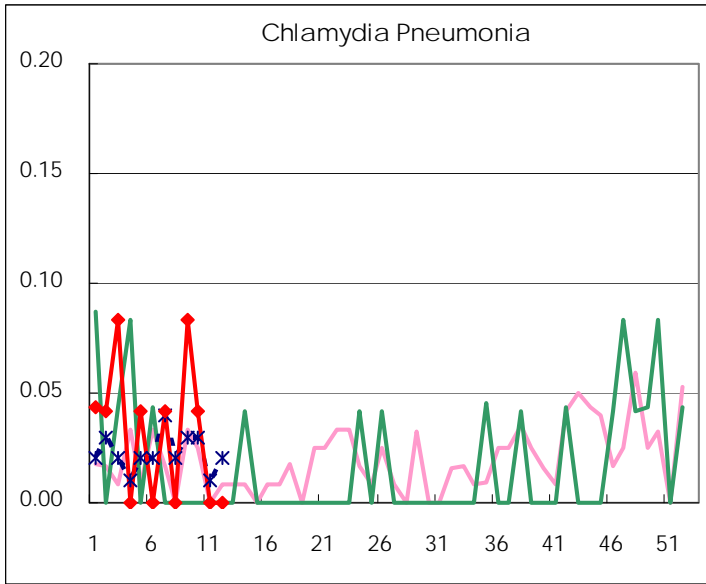
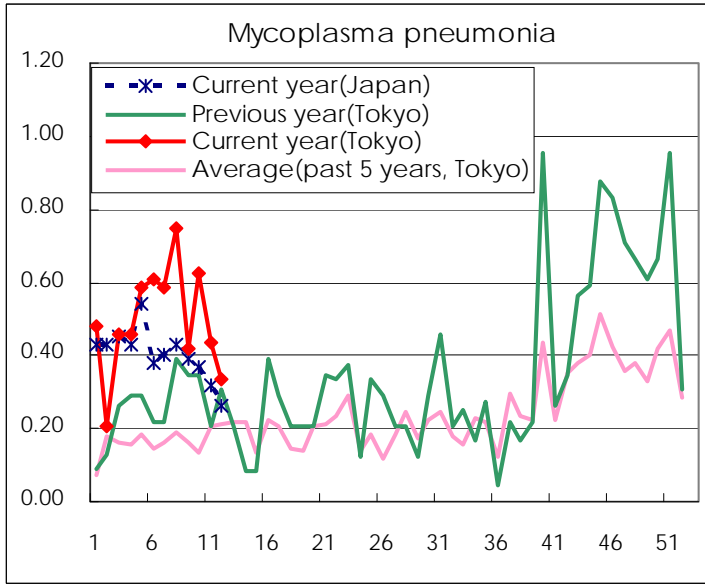
(Blank means 0.)

Disease Trend Graph (weekly reported cases per sentinel in comparison)









Number of sentinel facilities for weekly reporting		
Types of sentinels	Number of sentinels	Sentinels having reported
Pediatric	264	260
Influenza	419	414
Ophthalmic	39	37
Specially-designated	25	24

Tokyo Metropolitan Government
Infectious Disease Surveillance Center