
INFECTIOUS DISEASES WEEKLY REPORT

TOKYO IDWR

Tokyo Metropolitan Infectious Disease Surveillance Center

7 April 2011 / Number 13

Surveillance System in Tokyo, Japan

The infectious diseases which all physicians must report

All physicians must report to health centers the incidence of the diseases which are shown at page one. Health centers electronically report the individual cases to Tokyo Metropolitan Infectious Disease Surveillance Center.

The infectious diseases required to be reported by the sentinels

The numbers of patients who visit the sentinel clinics or hospitals during a week are reported to health centers in Tokyo. And they electronically report the numbers to Tokyo Metropolitan Infectious Disease Surveillance Center. We have about 400 sentinel clinics and hospitals in Tokyo.

1st Week is early January and 52nd Week is end of December.

Tokyo Metropolitan Institute of Public Health
Epidemiological Information Office

TEL:81-3-3363-3213 FAX:81-3-5332-7365

e-mail:idsc@tokyo-eiken.go.jp

URL:idsc.tokyo-eiken.go.jp/

Number of patients with the diseases which all physicians must report

Category	Diseases	Tokyo				Japan		
		10th	11th	12th	13th	Cum 2011	13th	Cum 2011
I	Ebola hemorrhagic fever							
	Crimean-Congo hemorrhagic fever							
	Smallpox							
	South American hemorrhagic fever							
	Plague							
	Marburg disease							
	Lassa fever							
II	Acute poliomyelitis							
	Tuberculosis	74	67	57	57	1,023	328	6,307
	Diphtheria							
	Severe Acute Respiratory Syndrome(SARS)							
	Avian influenza H5N1							
III	Cholera							1
	Shigellosis	1		2	2	13	2	58
	Enterohemorrhagic Escherichia coli infection	2	2	2		17	4	180
	Typhoid fever							2
	Paratyphoid fever	1				5		8
IV	Hepatitis E					4		16
	West Nile fever							
	Hepatitis A	3	2			11	2	94
	Echinococcosis					1		8
	Yellow fever							
	Psittacosis			1		1	3	7
	Omsk hemorrhagic fever							
	Relapsing fever							
	Kyasanur forest disease							
	Q fever							
	Rabies							
	Coccidioidomycosis					2		2
	Monkeypox							
	Hemorrhagic fever with renal syndrome							
	Western equine encephalitis							
	Tick-borne encephalitis							
	Anthrax							
	Chikungunya fever							3
	Scrub typhus(Tsutsugamushi disease)				1	7	1	41
	Dengue fever		1		1	8	1	28
	Eastern equine encephalitis							
	Avian influenza (excluding H5N1)							
	Nipah virus infection							
	Japanese spotted fever							
	Japanese encephalitis					1		1
	Hantavirus pulmonary syndrome							
	Herpes B virus infection							
	Glanders							
	Brucellosis							
	Venezuelan equine encephalitis							
	Hendra virus infection							
Epidemic typhus								
Botulism							2	
Malaria		1	2	1	5	1	11	
Tularemia								
Lyme disease				1	1		1	
Lyssavirus infection(excluding rabies)								
Rift valley fever								
Melioidosis								
Legionellosis		1	1	1	10	8	122	
Leptospirosis			1		2		2	
Rocky mountain spotted fever								

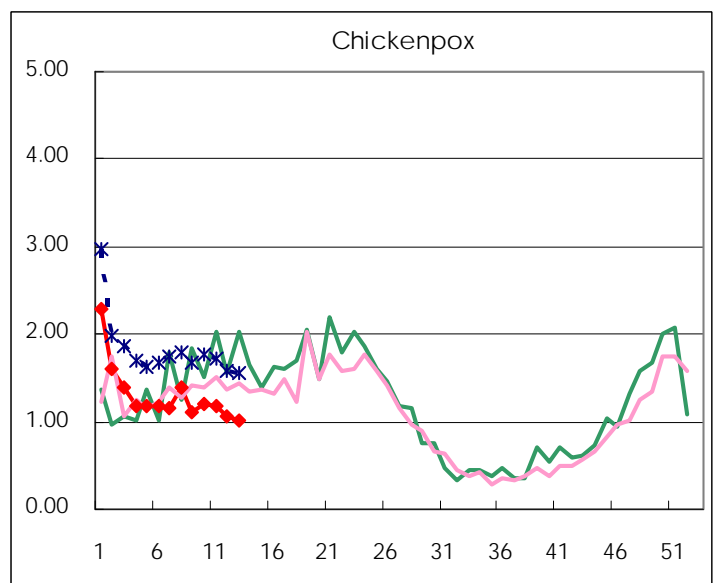
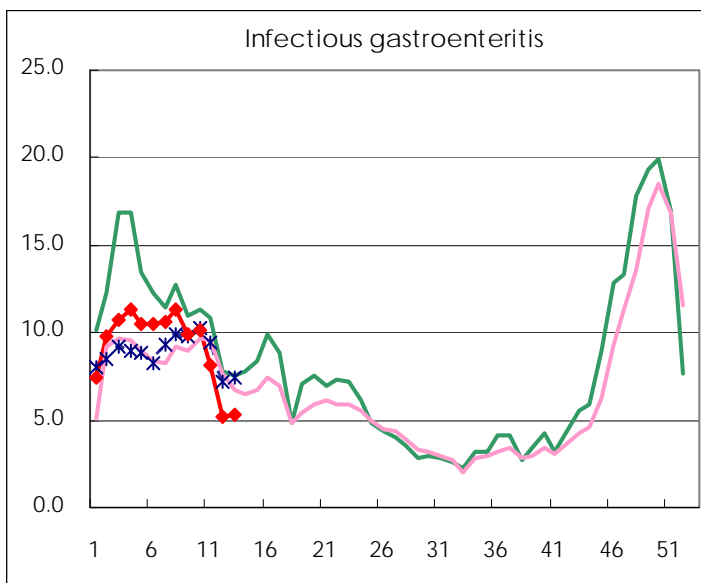
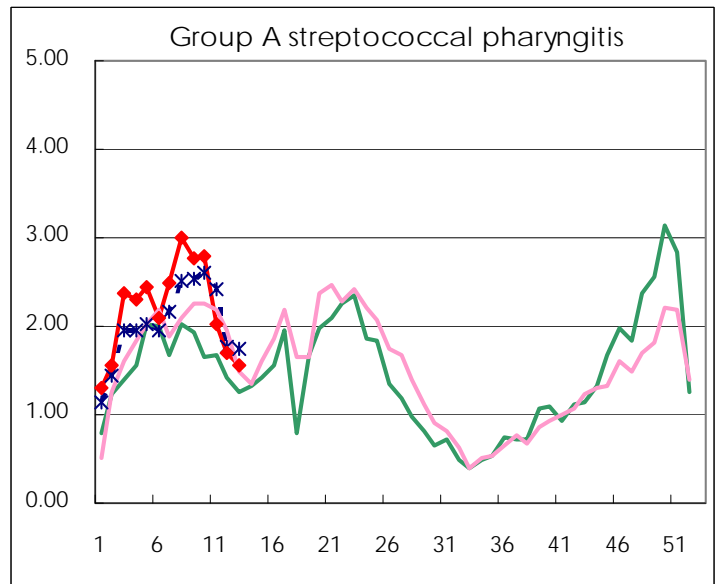
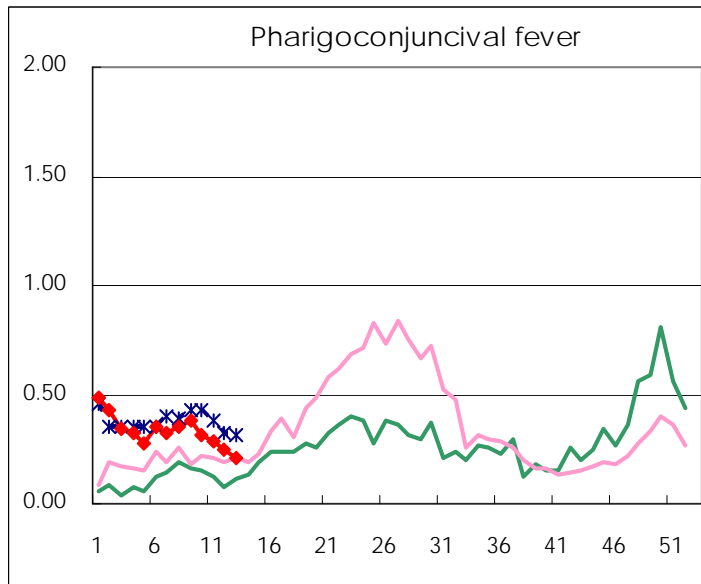
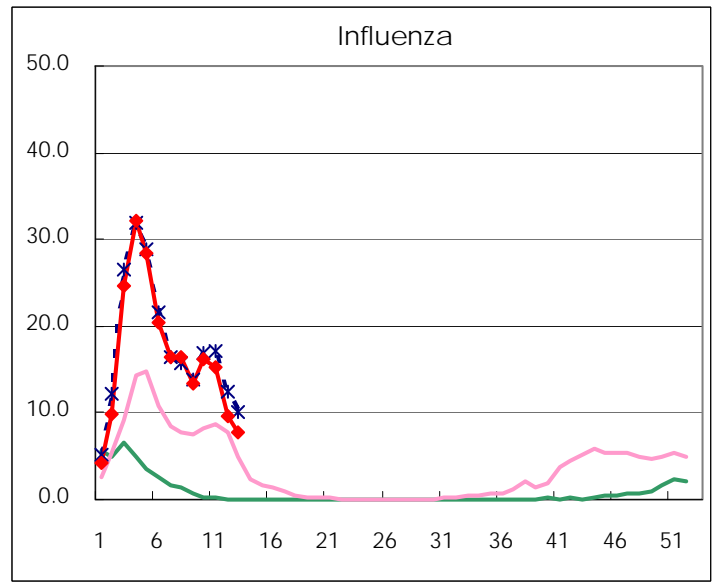
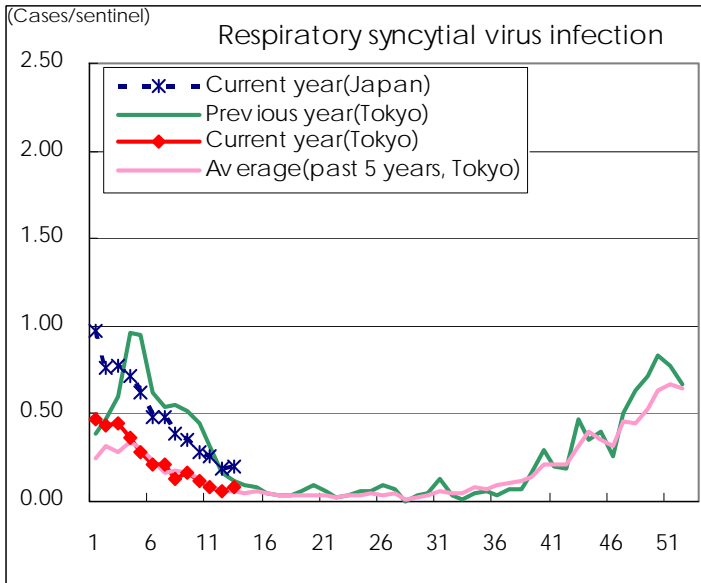
Category	Diseases	Tokyo				Japan		
		10th	11th	12th	13th	Cum 2011	13th	Cum 2011
V	Amebiasis	2	5	3	3	42	6	169
	Viral hepatitis(excluding hepatitis A and E)			1	1	8	2	61
	Acute encephalitis(excluding JE and WNE)				1	7	2	92
	Cryptosporidiosis				1	2	1	3
	Creutzfeldt-Jakob disease					5	3	26
	Severe invasive streptococcal infections(TSLS)	2	1		1	12	2	58
	Acquired immunodeficiency syndrome (AIDS)	10	4	6	5	112	6	313
	Giardiasis				1	4	2	17
	Meningococcal meningitis							1
	Congenital rubella syndrome							
	Syphilis	5	4	2	4	48	10	159
	Tetanus	1				1		15
	Vancomycin-resistant S. aureus infection							
	Vancomycin-resistant Enterococcus infection							12
	Rubella	1			1	3	4	41
Measles	2	2	1	1	22	7	93	
Novel Flu	Novel influenza (pandemic A/H1N1 2009)	—	—	—	—	—	—	—

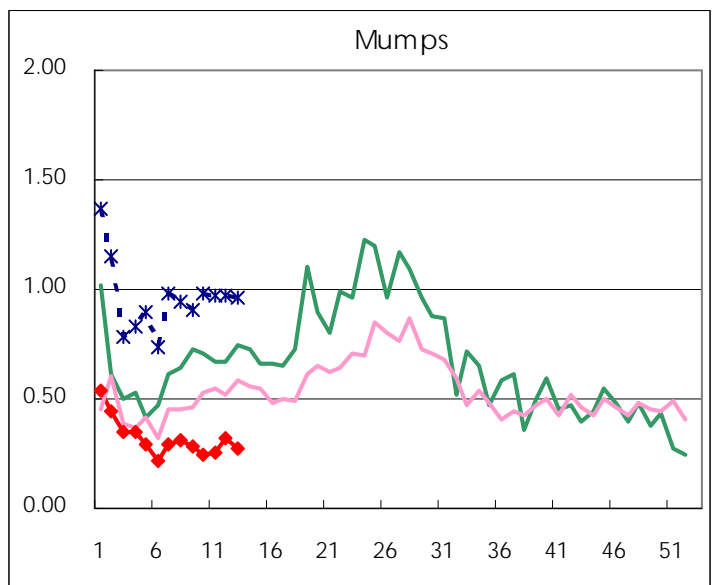
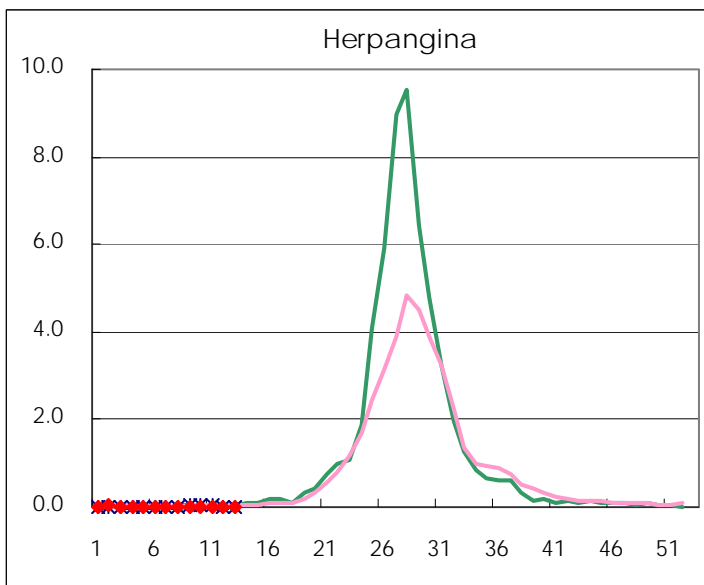
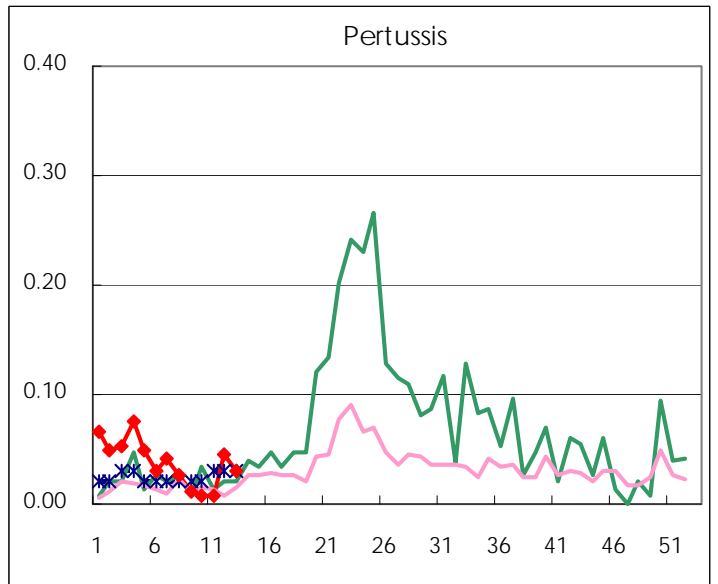
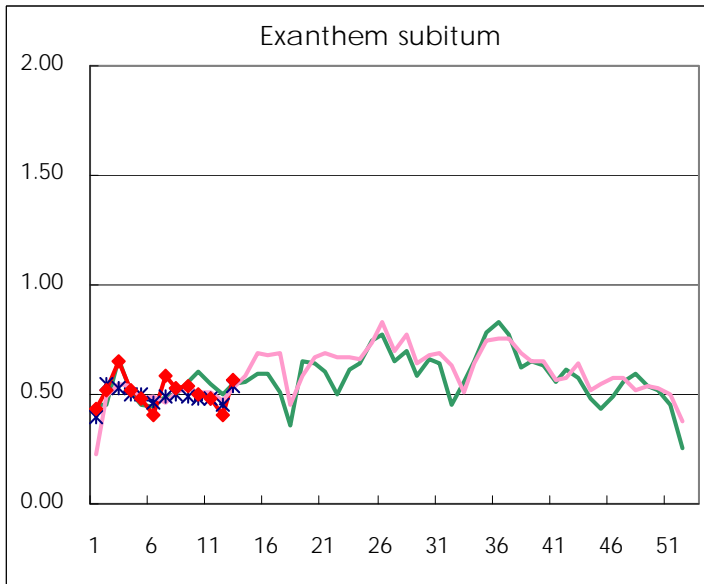
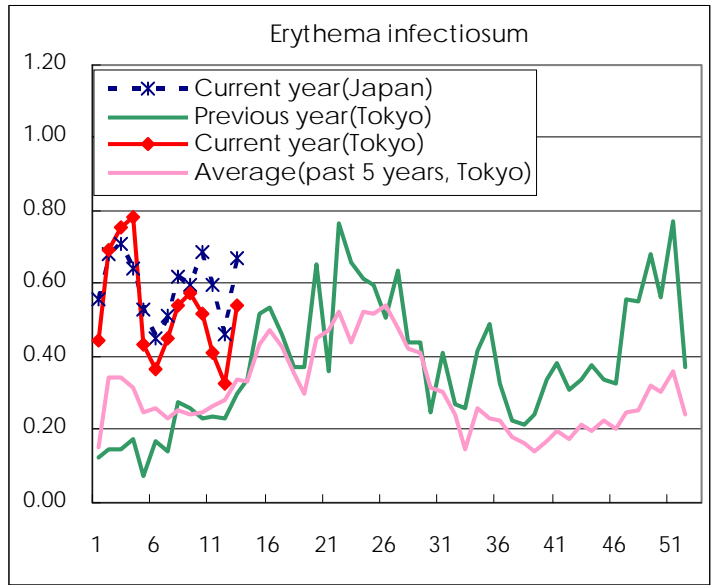
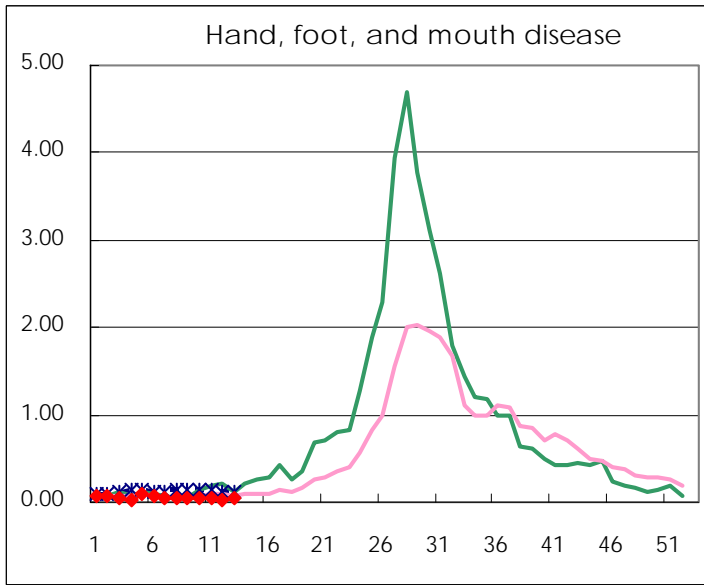
Number of patients with the diseases to be reported
by the designated clinics and hospitals

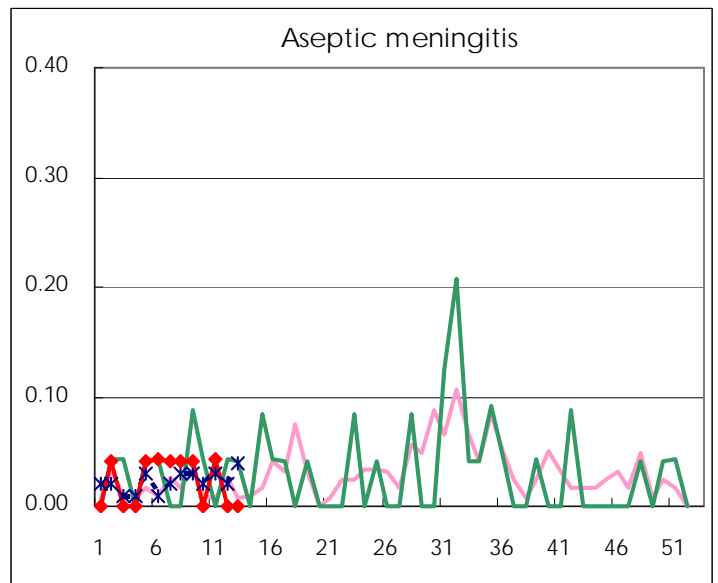
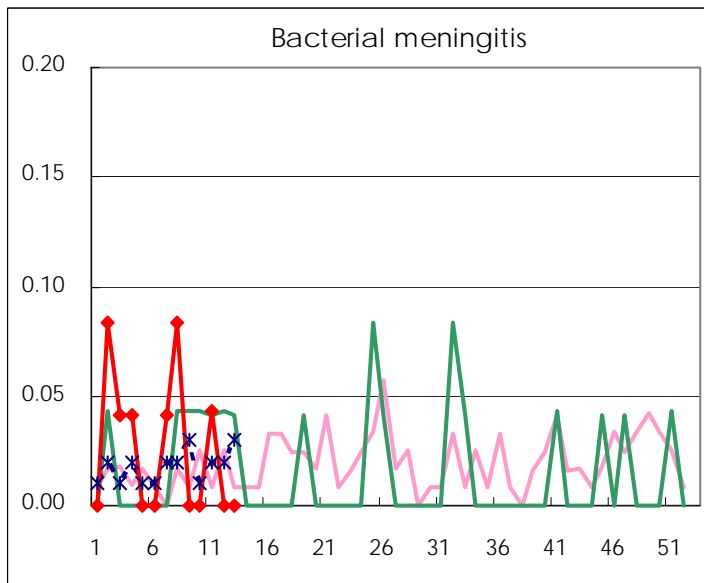
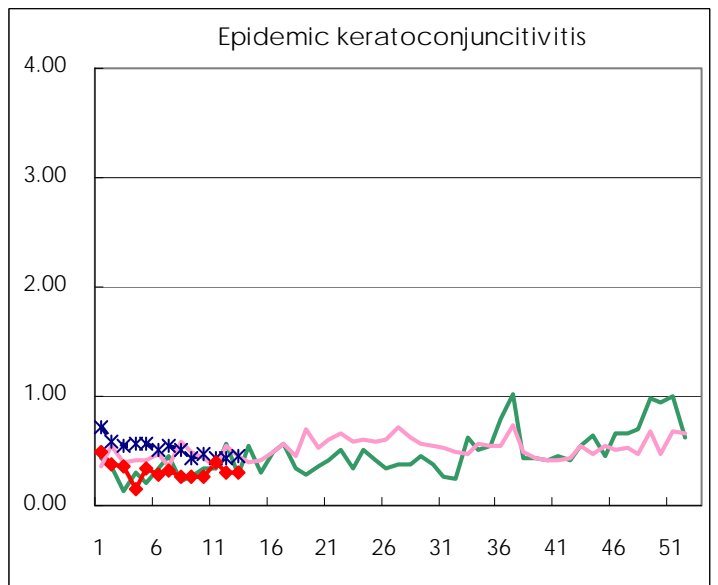
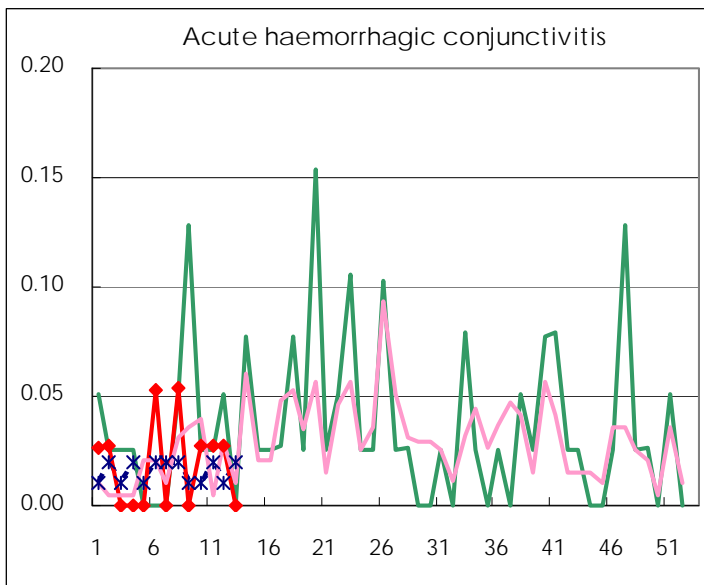
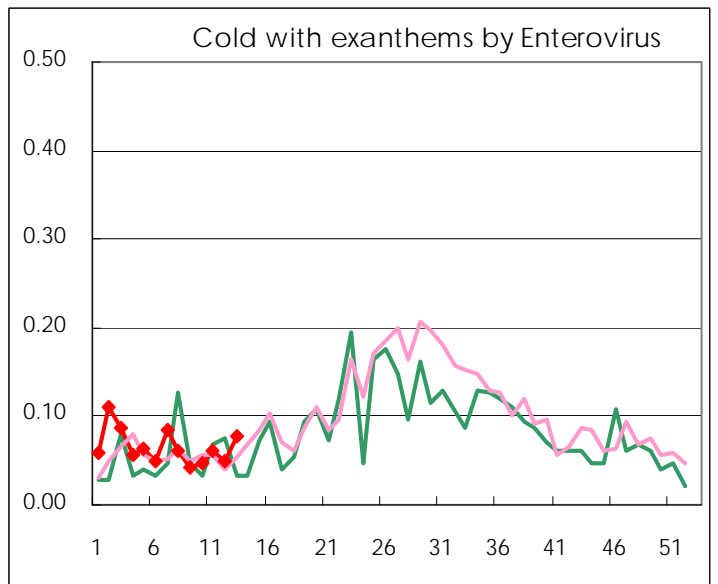
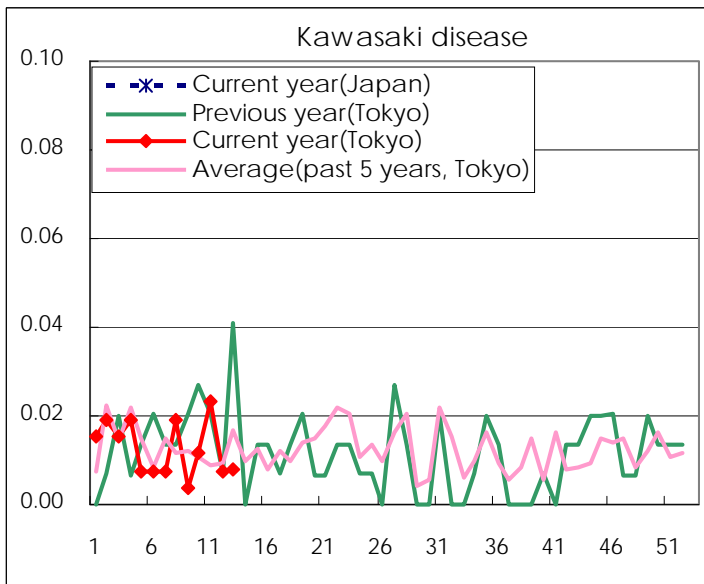
Diseases	2011				
	10th	11th	12th	13th	/sentinel
Respiratory syncytial virus infection	29	22	16	20	0.08
Pharyngoconjunctival fever	81	73	65	53	0.21
Group A streptococcal pharyngitis	724	524	443	404	1.57
Infectious gastroenteritis	2626	2,110	1,347	1,383	5.36
Chickenpox	312	306	280	259	1.00
Hand, foot, and mouth disease	13	10	5	12	0.05
Erythema infectiosum	135	107	85	139	0.54
Exanthem subitum	129	124	105	146	0.57
Pertussis	2	2	12	8	0.03
Herpangina	5	2	2	5	0.02
Mumps	63	66	83	70	0.27
Kawasaki disease	3	6	2	2	0.01
Cold with exanthems by Enterovirus	12	16	13	20	0.08
Influenza	6,730	6,316	4,037	3,183	7.76
Acute hemorrhagic conjunctivitis	1	1	1		
Epidemic keratoconjunctivitis	10	14	11	11	0.30
Bacterial meningitis		1			
Aseptic meningitis		1			
Mycoplasma pneumonia	15	10	8	6	0.25
Chlamydial pneumonia (excluding psittacosis)	1				

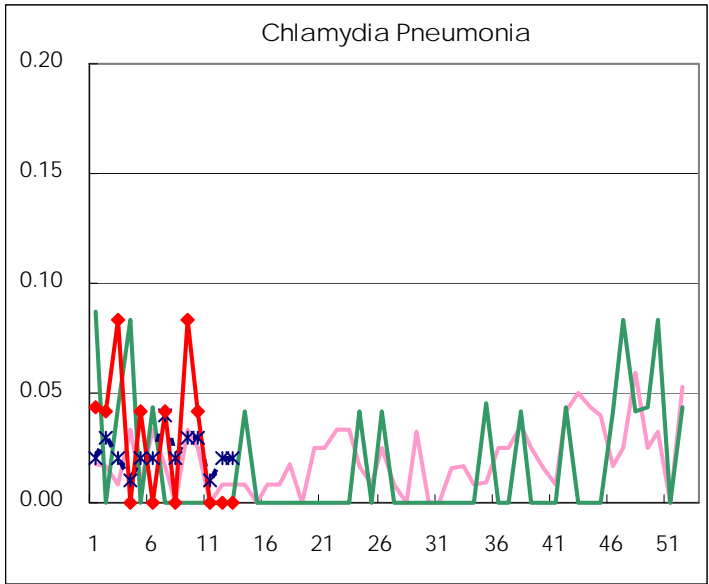
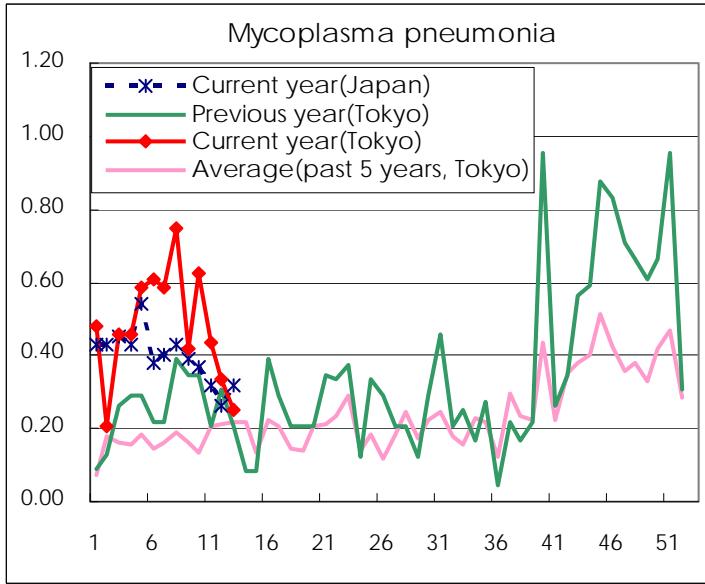
(Blank means 0.)

Disease Trend Graph (weekly reported cases per sentinel in comparison)









Number of sentinel facilities for weekly reporting		
Types of sentinels	Number of sentinels	Sentinels having reported
Pediatric	264	258
Influenza	419	410
Ophthalmic	39	37
Specially-designated	25	24

Tokyo Metropolitan Government
Infectious Disease Surveillance Center