
INFECTIOUS DISEASES WEEKLY REPORT

TOKYO IDWR

Tokyo Metropolitan Infectious Disease Surveillance Center

21 April 2011 / Number 15

Surveillance System in Tokyo, Japan

The infectious diseases which all physicians must report

All physicians must report to health centers the incidence of the diseases which are shown at page one. Health centers electronically report the individual cases to Tokyo Metropolitan Infectious Disease Surveillance Center.

The infectious diseases required to be reported by the sentinels

The numbers of patients who visit the sentinel clinics or hospitals during a week are reported to health centers in Tokyo. And they electronically report the numbers to Tokyo Metropolitan Infectious Disease Surveillance Center. We have about 400 sentinel clinics and hospitals in Tokyo.

1st Week is early January and 52nd Week is end of December.

Tokyo Metropolitan Institute of Public Health
Epidemiological Information Office

TEL:81-3-3363-3213 FAX:81-3-5332-7365

e-mail:idsc@tokyo-eiken.go.jp

URL:idsc.tokyo-eiken.go.jp/

Number of patients with the diseases which all physicians must report

Category	Diseases	Tokyo				Japan			
		12th	13th	14th	15th	Cum 2011	15th	Cum 2011	
I	Ebola hemorrhagic fever								
	Crimean-Congo hemorrhagic fever								
	Smallpox								
	South American hemorrhagic fever								
	Plague								
	Marburg disease								
	Lassa fever								
II	Acute poliomyelitis								
	Tuberculosis	64	95	63	66	1,268	309	7,555	
	Diphtheria								
	Severe Acute Respiratory Syndrome(SARS)								
III	Avian influenza H5N1								
	Cholera							1	
	Shigellosis	2	2		2	15	2	63	
	Enterohemorrhagic Escherichia coli infection	2		4	2	23	11	206	
	Typhoid fever							2	
IV	Paratyphoid fever			1	1	7		10	
	Hepatitis E			1		5	1	19	
	West Nile fever								
	Hepatitis A					11	4	101	
	Echinococcosis					1		8	
	Yellow fever								
	Psittacosis	1				1		7	
	Omsk hemorrhagic fever								
	Relapsing fever								
	Kyasanur forest disease								
	Q fever								
	Rabies								
	Coccidioidomycosis					2		2	
	Monkeypox								
	Hemorrhagic fever with renal syndrome								
	Western equine encephalitis								
	Tick-borne encephalitis								
	Anthrax								
	Chikungunya fever							3	
	Scrub typhus(Tsutsugamushi disease)		1				7		41
	Dengue fever		1	2			10	2	33
	Eastern equine encephalitis								
	Avian influenza (excluding H5N1)								
	Nipah virus infection								
	Japanese spotted fever								
	Japanese encephalitis						1		1
	Hantavirus pulmonary syndrome								
	Herpes B virus infection								
	Glanders								
	Brucellosis								
	Venezuelan equine encephalitis								
	Hendra virus infection								
Epidemic typhus									
Botulism								2	
Malaria	2	1	1	1	7	2		16	
Tularemia									
Lyme disease		1			1	2	1	2	
Lyssavirus infection(excluding rabies)									
Rift valley fever									
Melioidosis									
Legionellosis	1	1		1	11	6		139	
Leptospirosis	1				2			2	
Rocky mountain spotted fever									

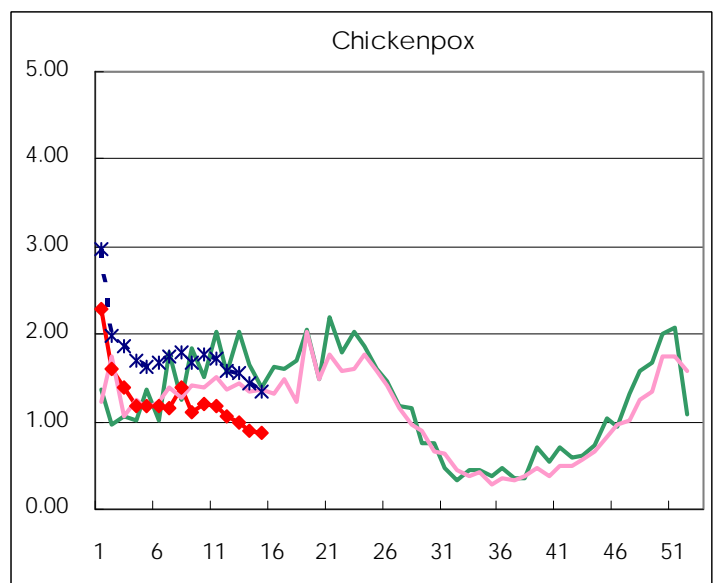
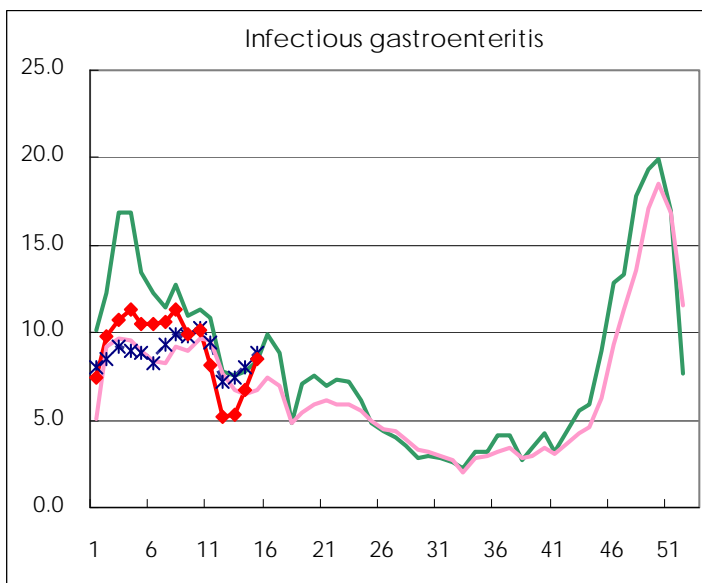
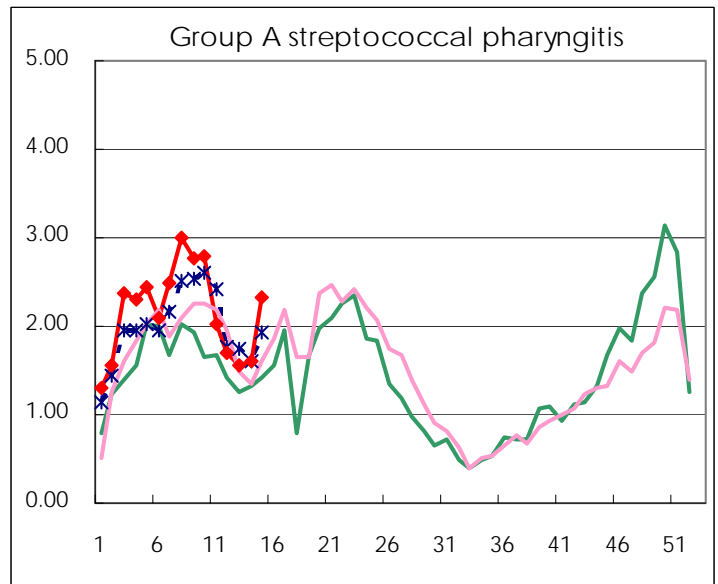
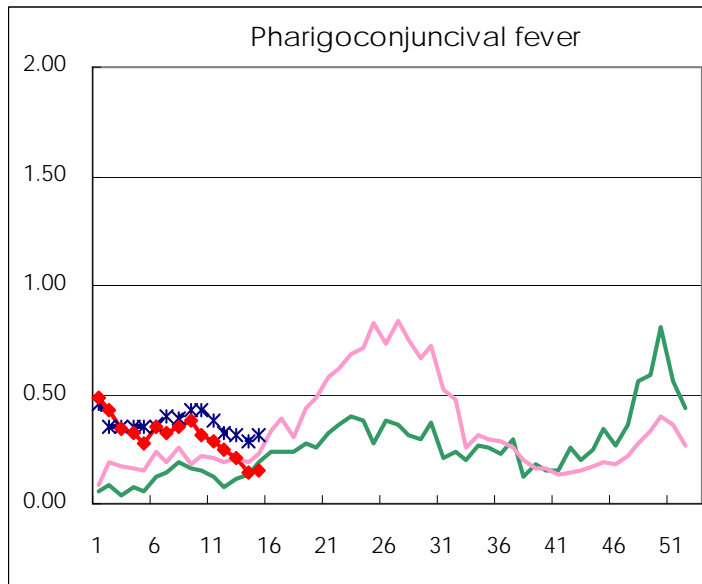
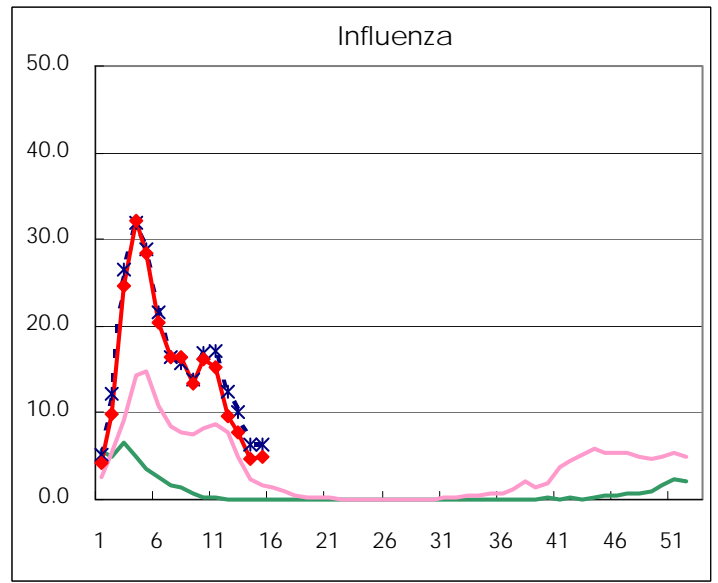
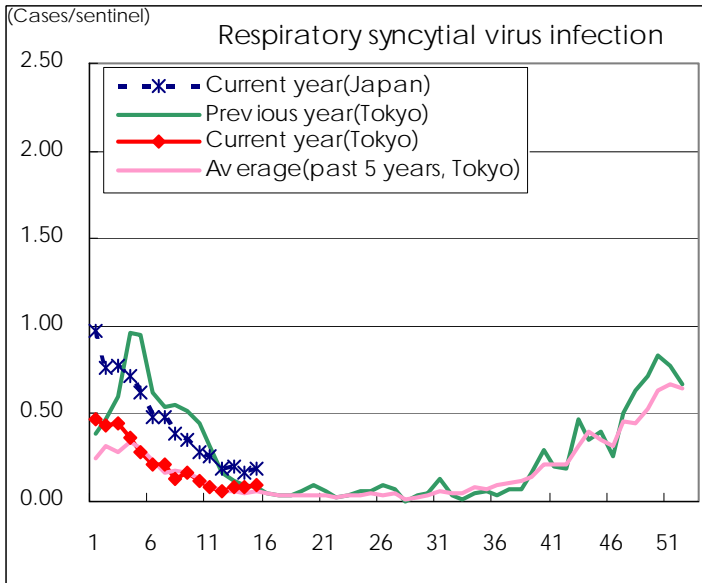
Category	Diseases	Tokyo				Japan		
		12th	13th	14th	15th	Cum 2011	15th	Cum 2011
V	Amebiasis	3	4	4	4	51	13	212
	Viral hepatitis(excluding hepatitis A and E)	1	1	1	2	11	1	72
	Acute encephalitis(excluding JE and WNE)		1			7	1	105
	Cryptosporidiosis		1			2		3
	Creutzfeldt-Jakob disease	1		1		7	1	30
	Severe invasive streptococcal infections(TSLS)		1			12		63
	Acquired immunodeficiency syndrome (AIDS)	6	5	4	4	120	9	378
	Giardiasis		1			4	2	20
	Meningococcal meningitis							1
	Congenital rubella syndrome							
	Syphilis	2	4	3	1	52	3	187
	Tetanus					1		19
	Vancomycin-resistant S. aureus infection							
	Vancomycin-resistant Enterococcus infection							15
	Rubella		1		1	5	8	58
	Measles	1	1	3	13	38	27	128

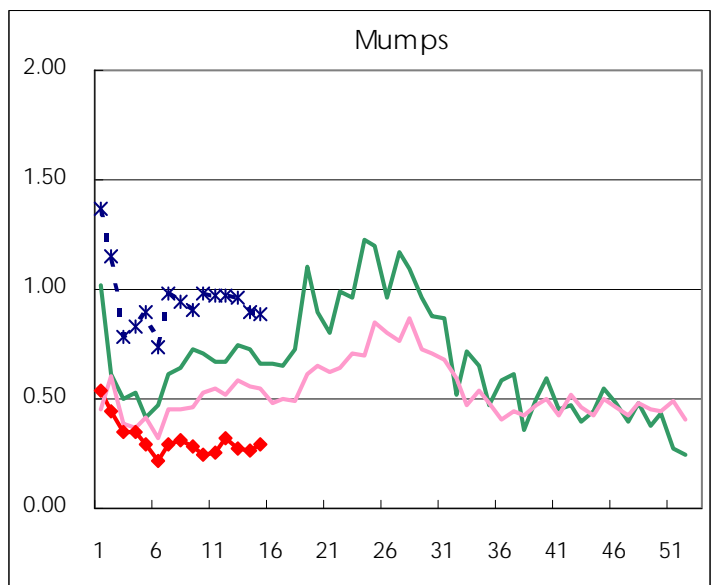
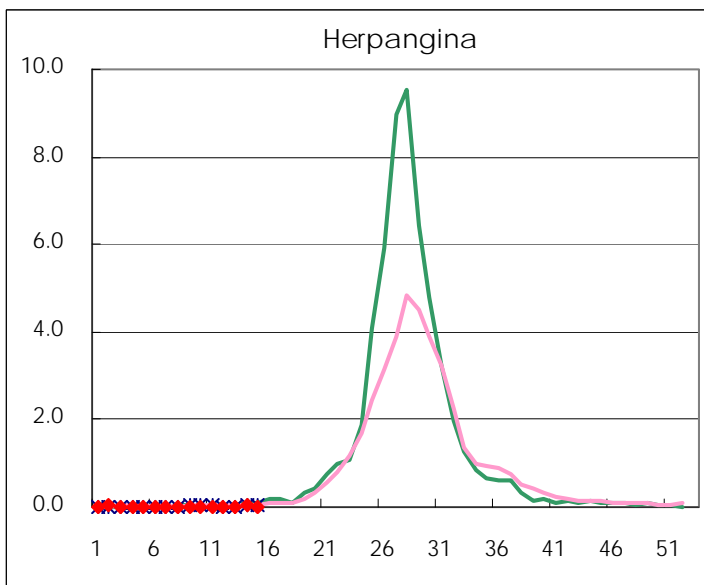
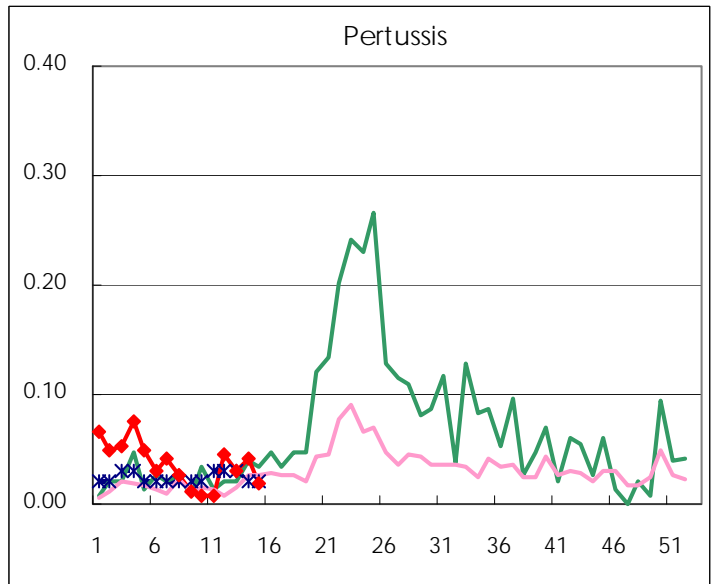
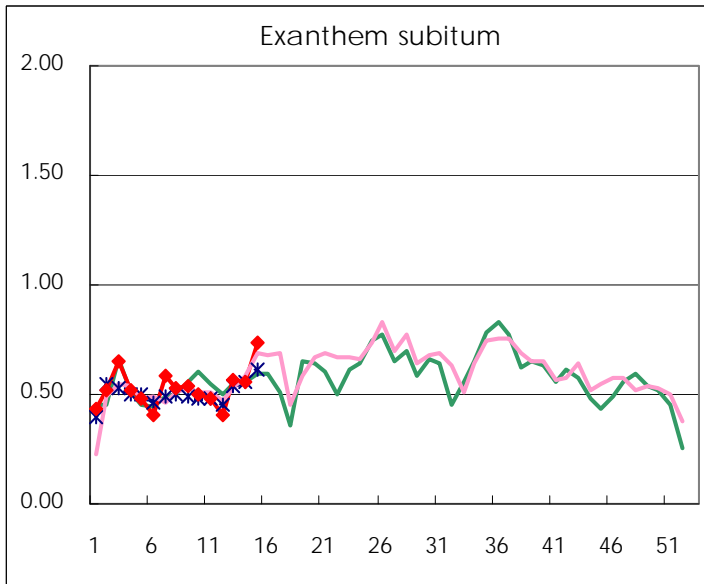
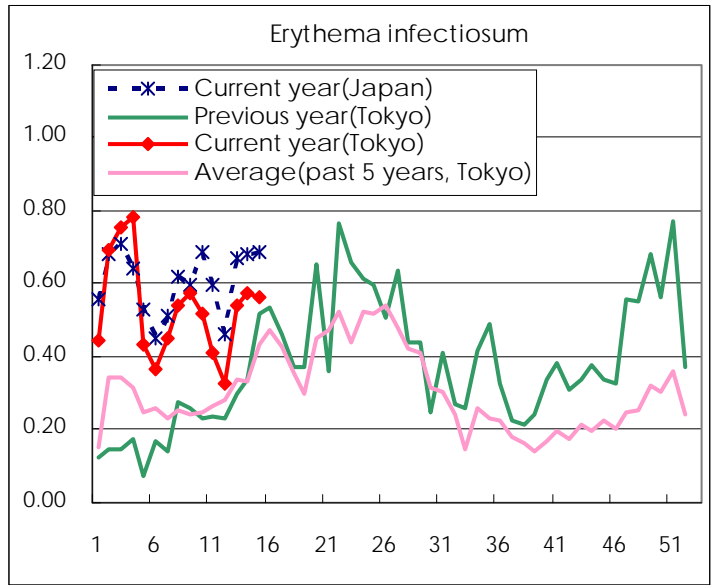
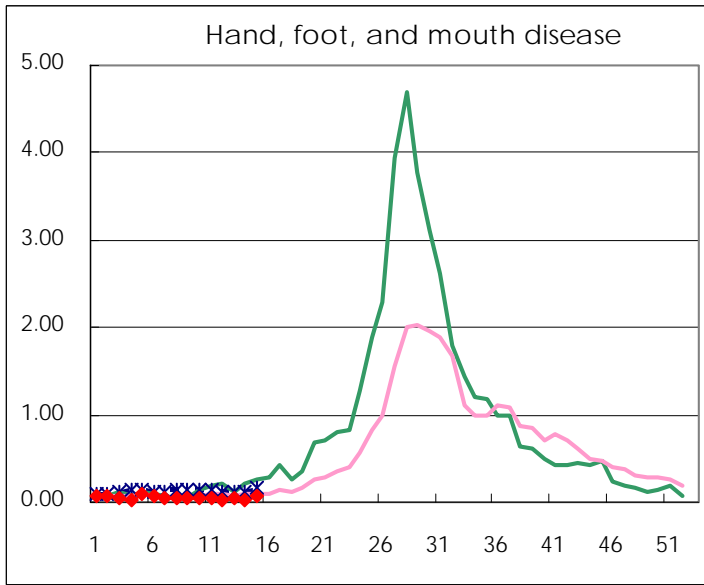
Number of patients with the diseases to be reported
by the designated clinics and hospitals

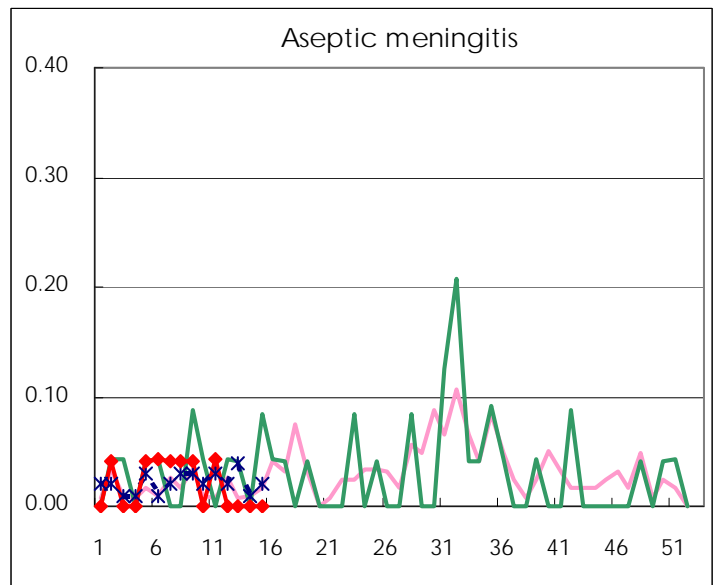
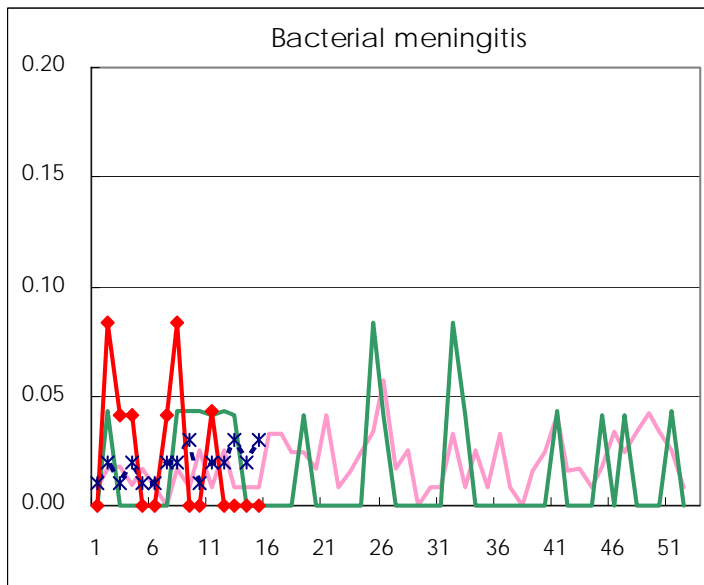
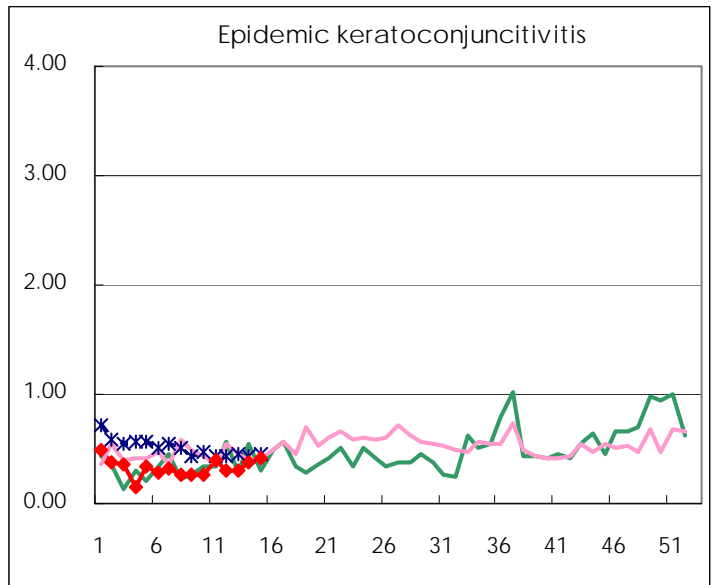
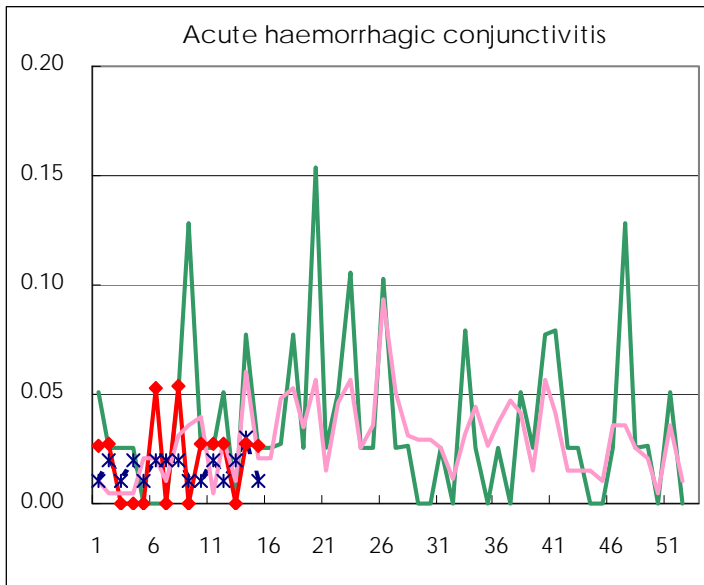
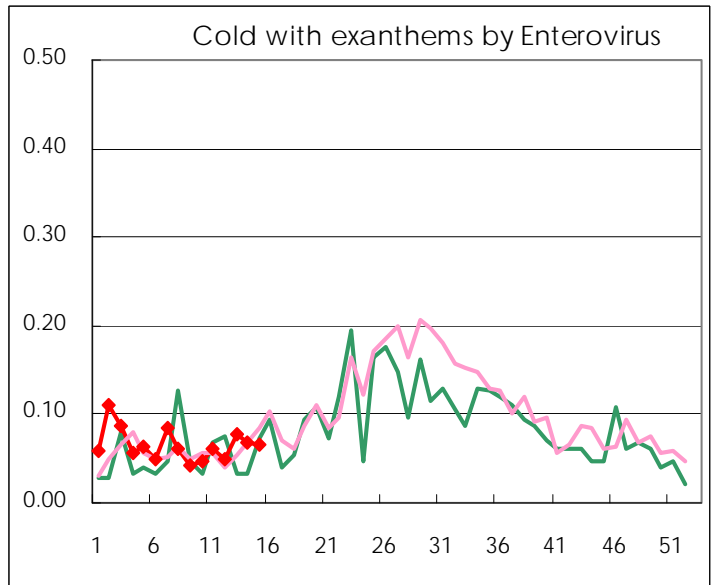
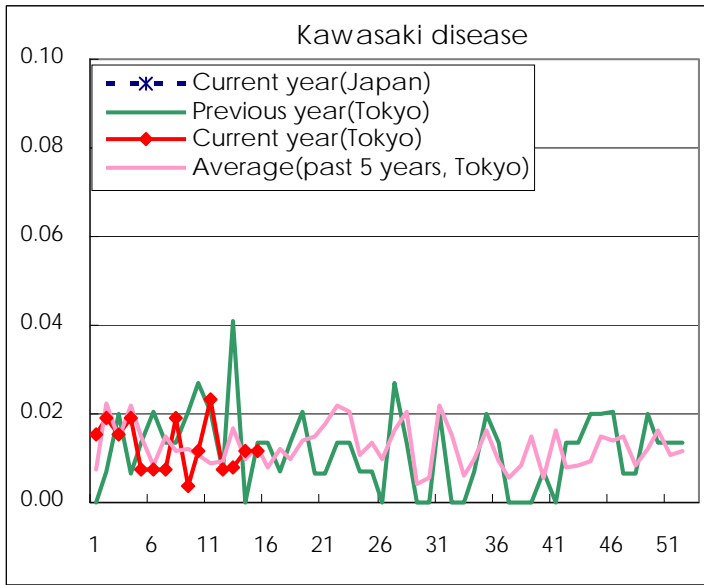
Diseases	2011				
	12th	13th	14th	15th	/sentinel
Respiratory syncytial virus infection	16	20	20	24	0.09
Pharyngoconjunctival fever	65	54	38	40	0.15
Group A streptococcal pharyngitis	443	404	415	607	2.33
Infectious gastroenteritis	1347	1,393	1,739	2,202	8.44
Chickenpox	280	259	234	228	0.87
Hand, foot, and mouth disease	5	12	8	17	0.07
Erythema infectiosum	85	140	149	147	0.56
Exanthem subitum	105	147	144	193	0.74
Pertussis	12	8	11	5	0.02
Herpangina	2	5	7	4	0.02
Mumps	83	70	68	77	0.30
Kawasaki disease	2	2	3	3	0.01
Cold with exanthems by Enterovirus	13	20	18	17	0.07
Influenza	4,037	3,192	1,928	2,095	5.04
Acute hemorrhagic conjunctivitis	1		1	1	0.03
Epidemic keratoconjunctivitis	11	11	14	16	0.42
Bacterial meningitis					
Aseptic meningitis					
Mycoplasma pneumonia	8	6	7	8	0.36
Chlamydial pneumonia (excluding psittacosis)					

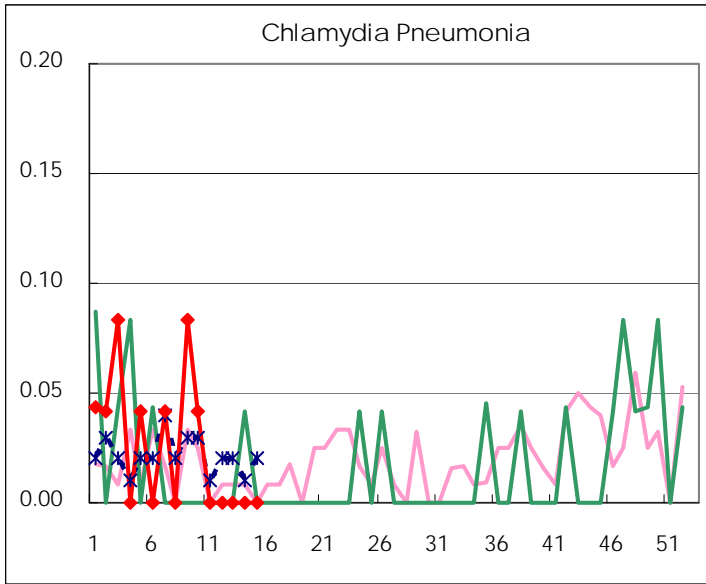
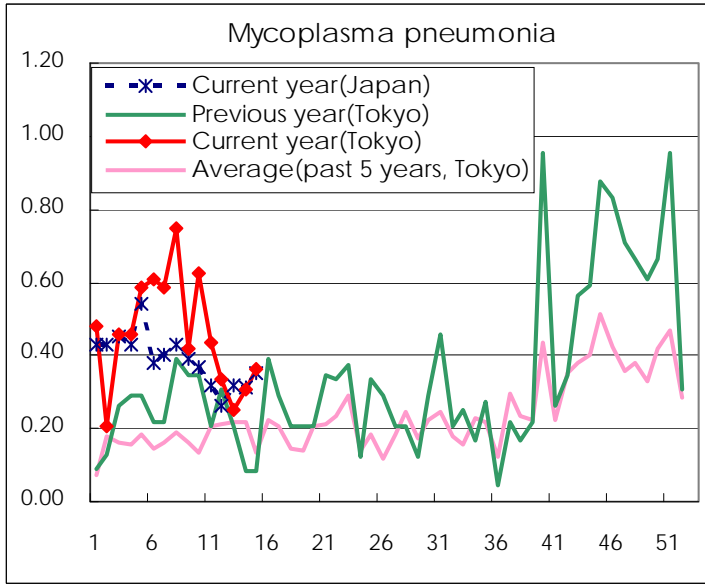
(Blank means 0.)

Disease Trend Graph (weekly reported cases per sentinel in comparison)









Number of sentinel facilities for weekly reporting		
Types of sentinels	Number of sentinels	Sentinels having reported
Pediatric	264	261
Influenza	419	416
Ophthalmic	39	38
Specially-designated	25	22

Tokyo Metropolitan Government
Infectious Disease Surveillance Center