
INFECTIOUS DISEASES WEEKLY REPORT

TOKYO IDWR

Tokyo Metropolitan Infectious Disease Surveillance Center

28 April 2011 / Number 16

Surveillance System in Tokyo, Japan

The infectious diseases which all physicians must report

All physicians must report to health centers the incidence of the diseases which are shown at page one. Health centers electronically report the individual cases to Tokyo Metropolitan Infectious Disease Surveillance Center.

The infectious diseases required to be reported by the sentinels

The numbers of patients who visit the sentinel clinics or hospitals during a week are reported to health centers in Tokyo. And they electronically report the numbers to Tokyo Metropolitan Infectious Disease Surveillance Center. We have about 400 sentinel clinics and hospitals in Tokyo.

1st Week is early January and 52nd Week is end of December.

Tokyo Metropolitan Institute of Public Health
Epidemiological Information Office

TEL:81-3-3363-3213 FAX:81-3-5332-7365

e-mail: idsc@tokyo-eiken.go.jp

URL: idsc.tokyo-eiken.go.jp/

Number of patients with the diseases which all physicians must report

Category	Diseases	Tokyo				Japan		
		13th	14th	15th	16th	Cum 2011	16th	Cum 2011
I	Ebola hemorrhagic fever							
	Crimean-Congo hemorrhagic fever							
	Smallpox							
	South American hemorrhagic fever							
	Plague							
	Marburg disease							
	Lassa fever							
II	Acute poliomyelitis							
	Tuberculosis	102	69	85	58	1,364	341	8,209
	Diphtheria							
	Severe Acute Respiratory Syndrome(SARS)							
	Avian influenza H5N1							
III	Cholera							1
	Shigellosis	2		2		15		63
	Enterohemorrhagic Escherichia coli infection		4	2	1	24	4	211
	Typhoid fever							2
	Paratyphoid fever		1	1		7		10
IV	Hepatitis E		1			5	1	23
	West Nile fever							
	Hepatitis A				1	12	1	104
	Echinococcosis					1		8
	Yellow fever							
	Psittacosis					1		7
	Omsk hemorrhagic fever							
	Relapsing fever							
	Kyasanur forest disease							
	Q fever							
	Rabies							
	Coccidioidomycosis					2		2
	Monkeypox							
	Hemorrhagic fever with renal syndrome							
	Western equine encephalitis							
	Tick-borne encephalitis							
	Anthrax							
	Chikungunya fever							3
	Scrub typhus(Tsutsugamushi disease)	1				7		41
	Dengue fever	1	2		1	11		33
	Eastern equine encephalitis							
	Avian influenza (excluding H5N1)							
	Nipah virus infection							
	Japanese spotted fever							
	Japanese encephalitis					1		1
	Hantavirus pulmonary syndrome							
	Herpes B virus infection							
	Glanders							
	Brucellosis							
	Venezuelan equine encephalitis							
	Hendra virus infection							
Epidemic typhus								
Botulism							2	
Malaria	1	1	1		7		16	
Tularemia								
Lyme disease	1		1		2		2	
Lyssavirus infection(excluding rabies)								
Rift valley fever								
Melioidosis								
Legionellosis	1		1	3	14	8	150	
Leptospirosis					2		2	
Rocky mountain spotted fever								

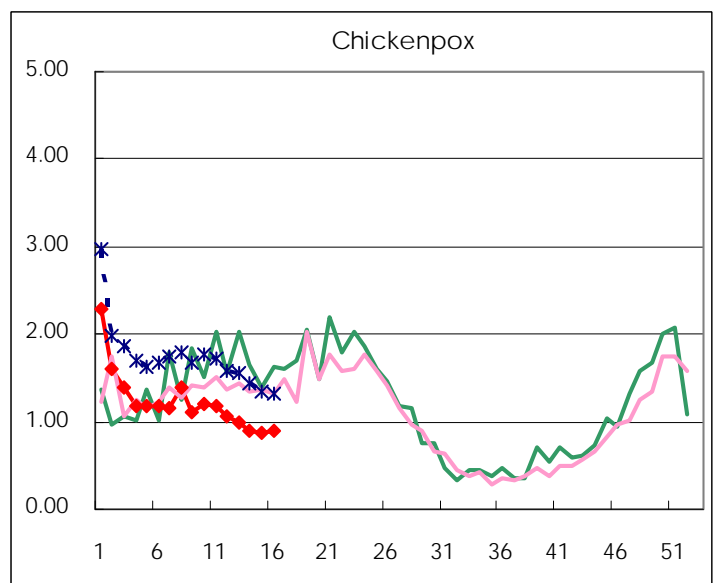
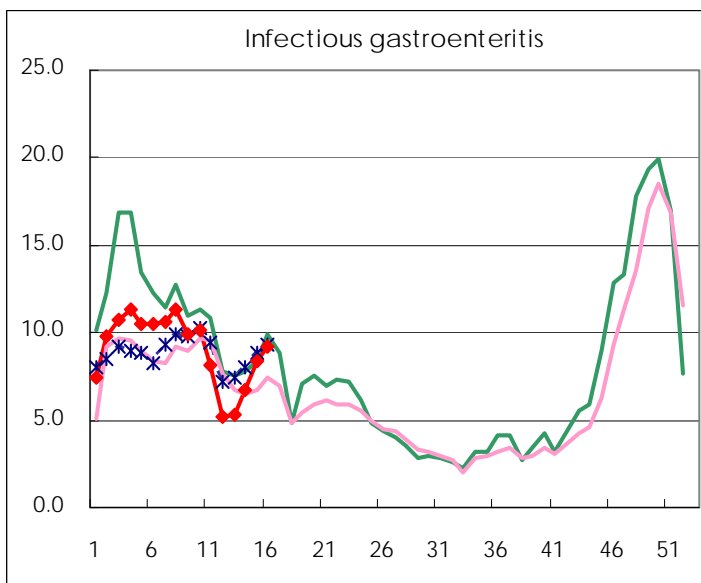
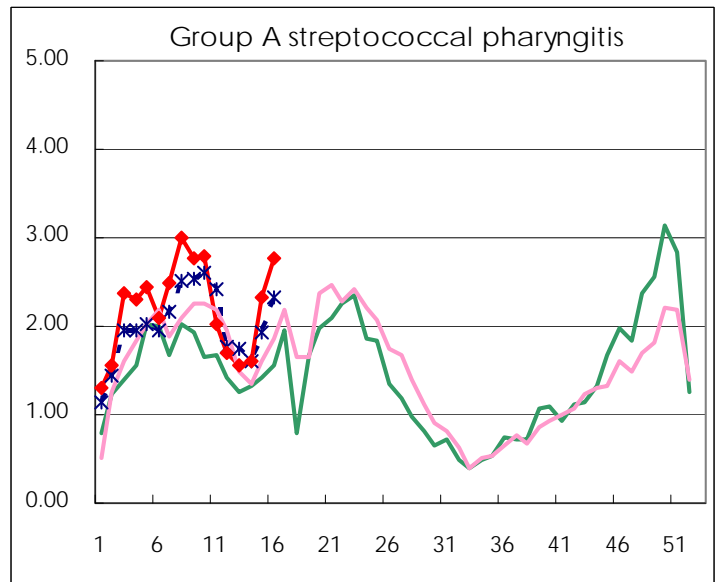
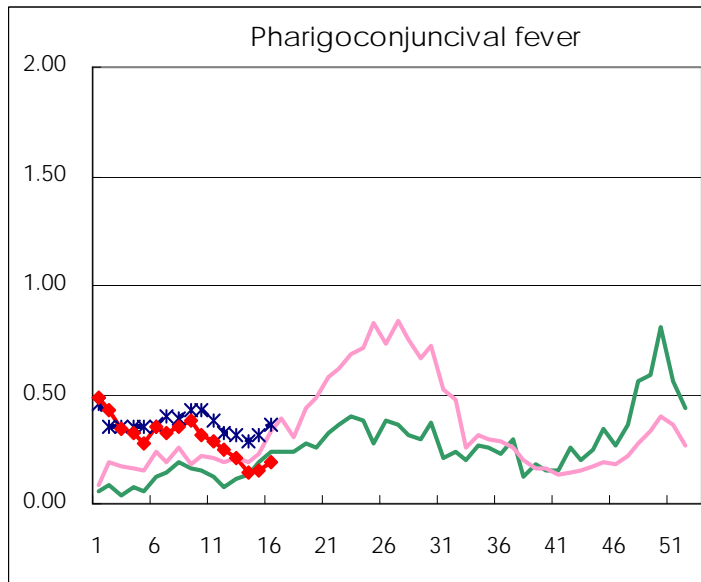
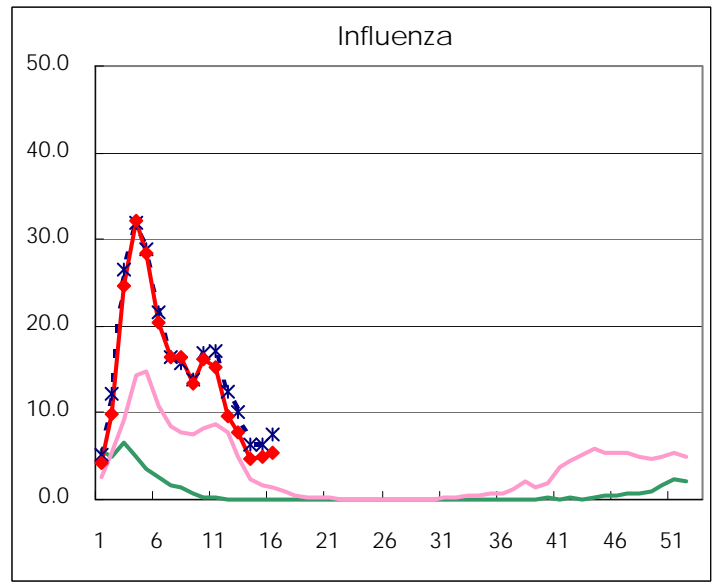
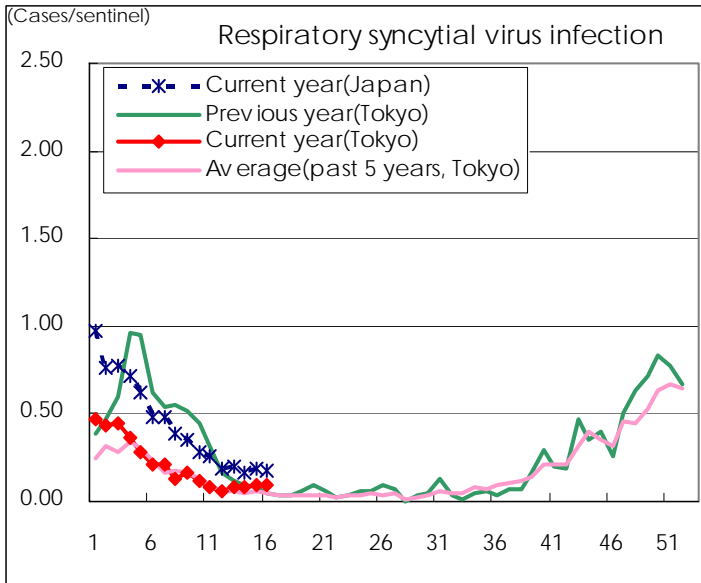
Category	Diseases	Tokyo				Japan		
		13th	14th	15th	16th	Cum 2011	16th	Cum 2011
V	Amebiasis	4	4	4	3	54	10	233
	Viral hepatitis(excluding hepatitis A and E)	1	1	2		11	1	74
	Acute encephalitis(excluding JE and WNE)	1				7	3	112
	Cryptosporidiosis	1				2		3
	Creutzfeldt-Jakob disease		1	1		8		33
	Severe invasive streptococcal infections(TSLS)	1		1		13	5	73
	Acquired immunodeficiency syndrome (AIDS)	5	4	4	10	130	14	412
	Giardiasis	1				4	1	21
	Meningococcal meningitis							1
	Congenital rubella syndrome							
	Syphilis	4	3	1		52	4	193
	Tetanus					1	1	21
	Vancomycin-resistant S. aureus infection							
	Vancomycin-resistant Enterococcus infection						1	17
	Rubella	1		2	2	7	12	77
	Measles	1	3	13	13	51	20	146

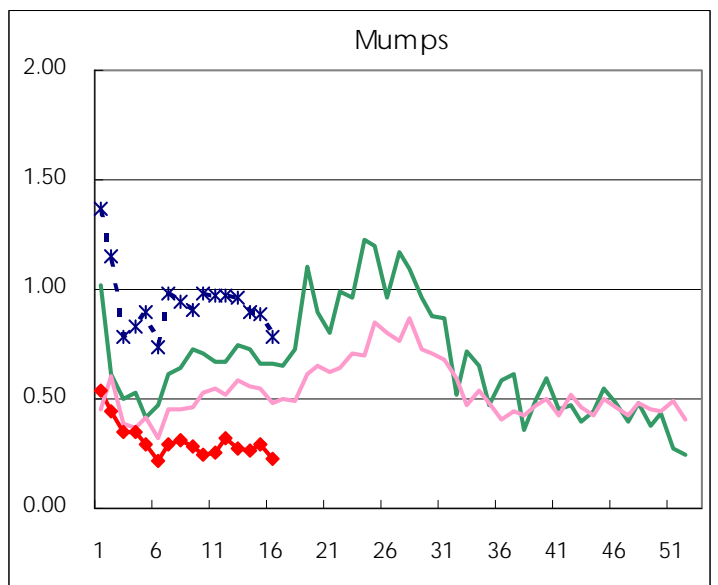
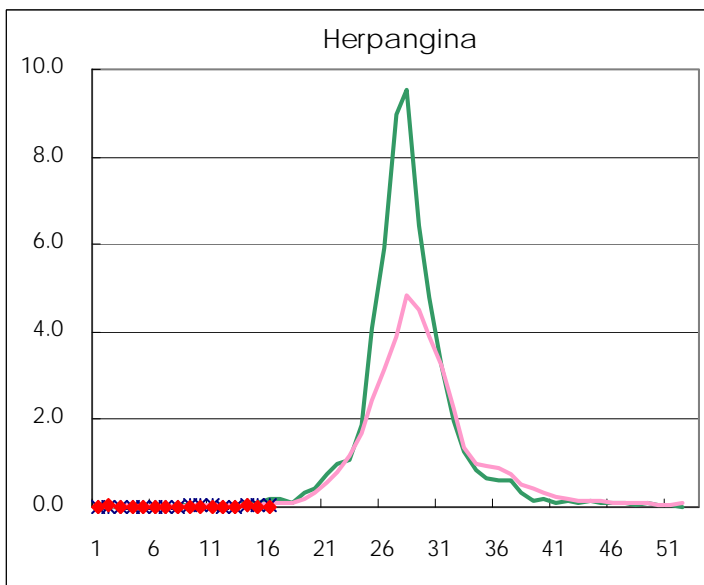
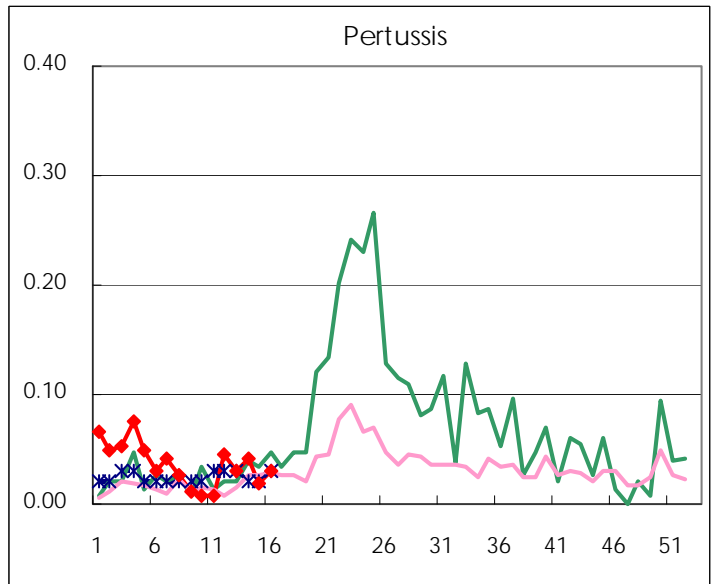
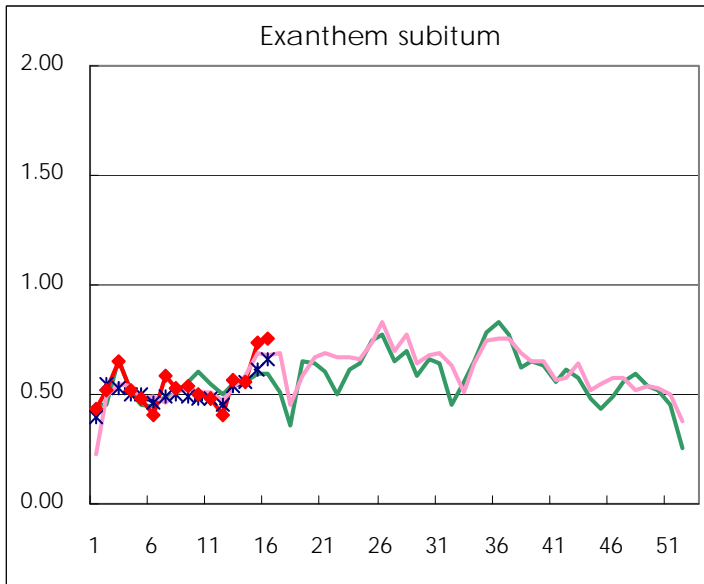
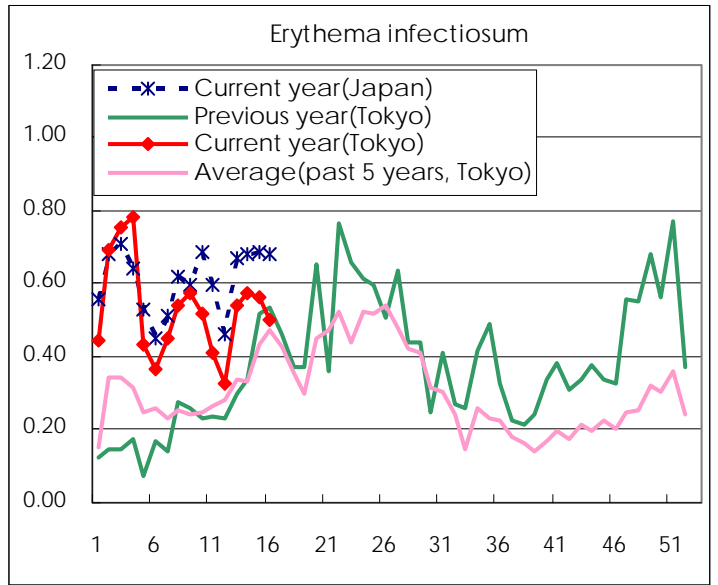
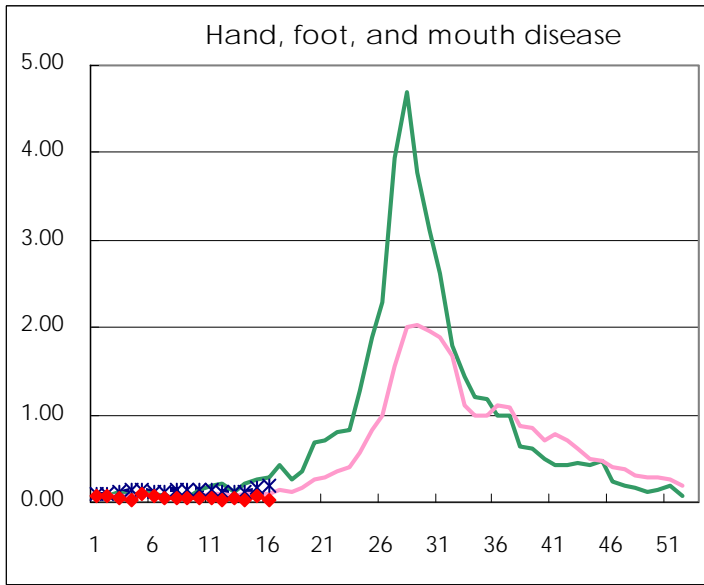
Number of patients with the diseases to be reported
by the designated clinics and hospitals

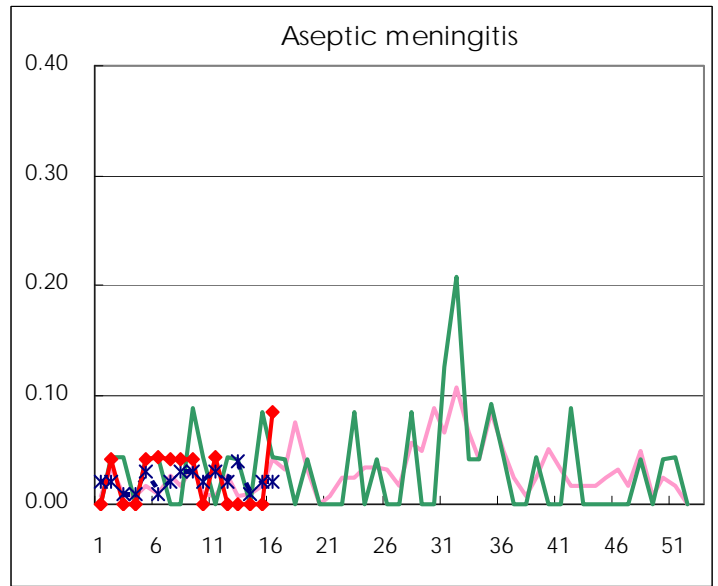
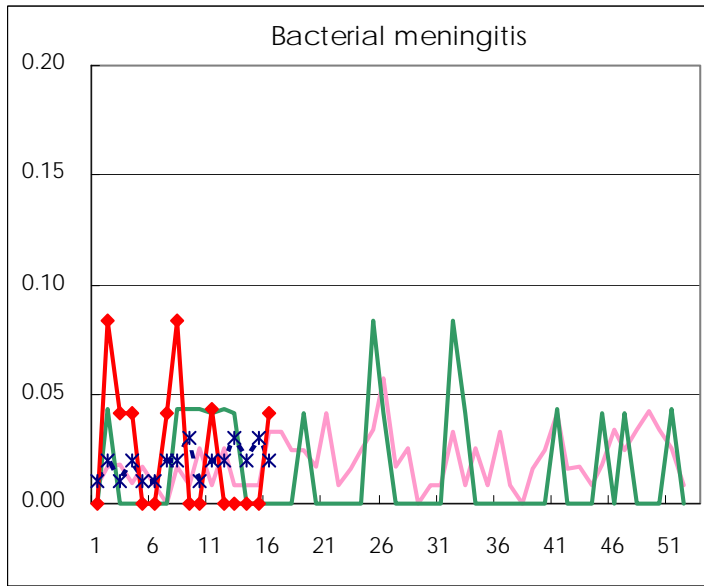
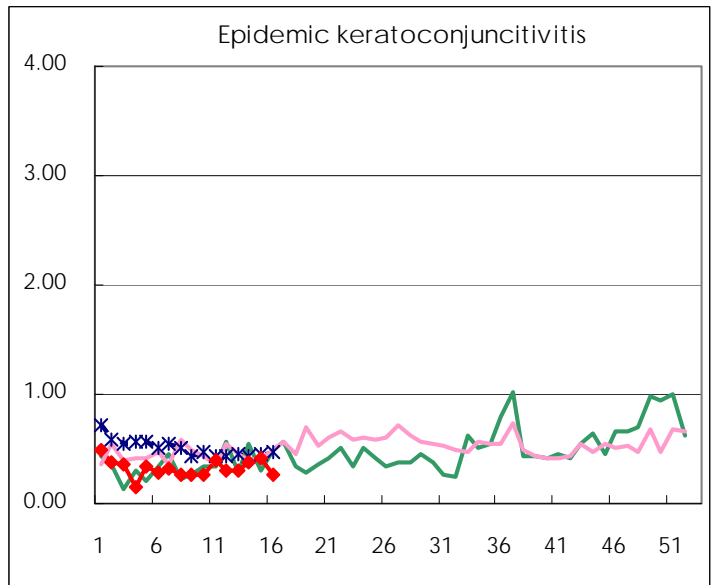
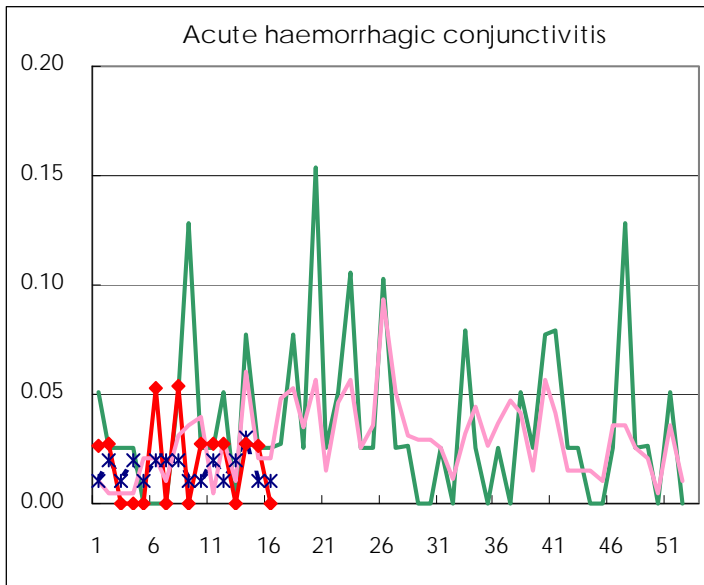
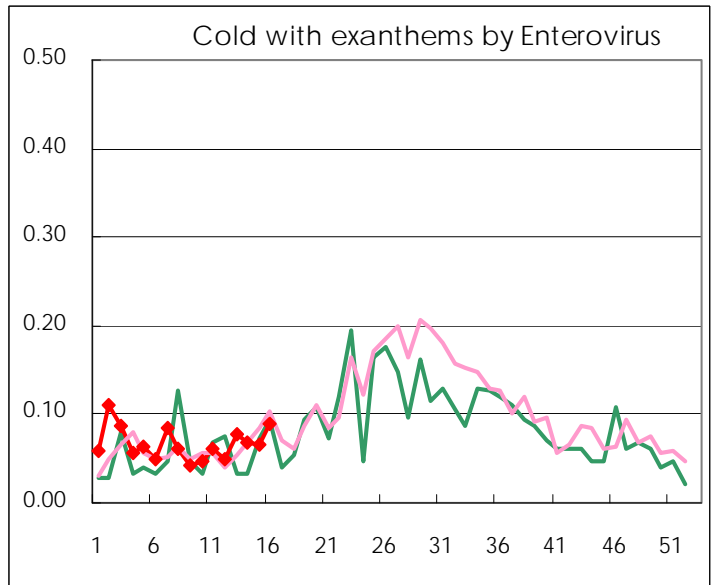
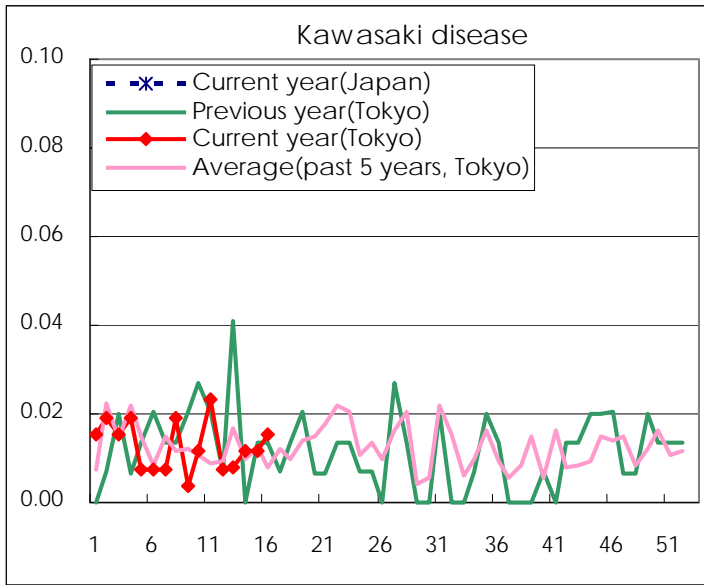
Diseases	2011				
	13th	14th	15th	16th	/sentinel
Respiratory syncytial virus infection	20	20	24	25	0.10
Pharyngoconjunctival fever	54	38	40	49	0.19
Group A streptococcal pharyngitis	404	415	611	721	2.76
Infectious gastroenteritis	1393	1,739	2,202	2,394	9.17
Chickenpox	259	234	228	233	0.89
Hand, foot, and mouth disease	12	8	17	8	0.03
Erythema infectiosum	140	149	147	131	0.50
Exanthem subitum	147	144	193	198	0.76
Pertussis	8	11	5	8	0.03
Herpangina	5	7	4	6	0.02
Mumps	70	68	77	60	0.23
Kawasaki disease	2	3	3	4	0.02
Cold with exanthems by Enterovirus	20	18	17	23	0.09
Influenza	3,192	1,928	2,098	2,253	5.43
Acute hemorrhagic conjunctivitis		1	1		
Epidemic keratoconjunctivitis	11	14	16	10	0.27
Bacterial meningitis				1	0.04
Aseptic meningitis				2	0.08
Mycoplasma pneumonia	6	7	8	11	0.46
Chlamydial pneumonia (excluding psittacosis)					

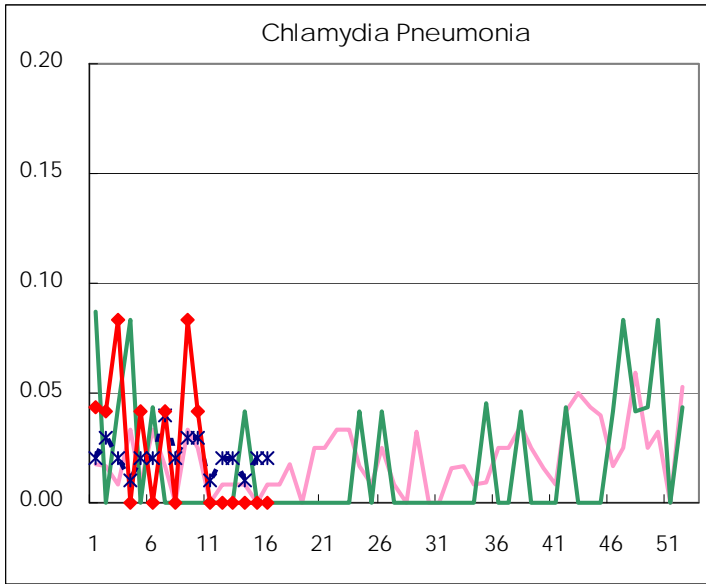
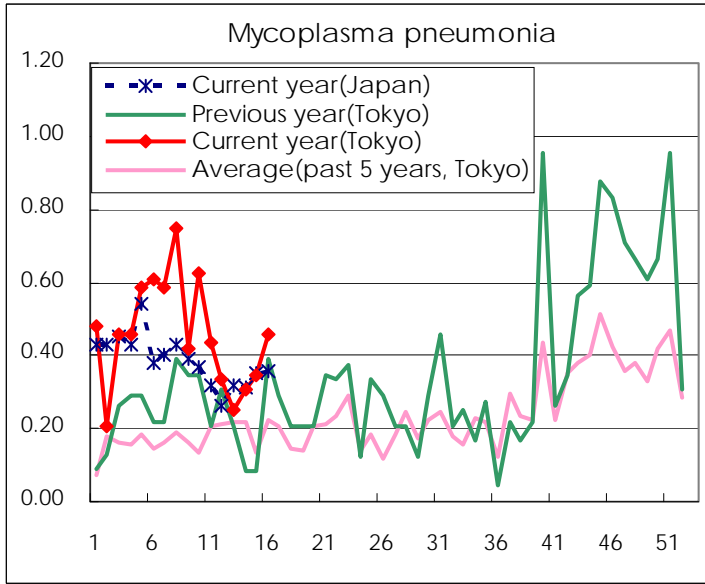
(Blank means 0.)

Disease Trend Graph (weekly reported cases per sentinel in comparison)









Number of sentinel facilities for weekly reporting		
Types of sentinels	Number of sentinels	Sentinels having reported
Pediatric	264	261
Influenza	419	415
Ophthalmic	39	37
Specially-designated	25	24

Tokyo Metropolitan Government
Infectious Disease Surveillance Center