
INFECTIOUS DISEASES WEEKLY REPORT

TOKYO IDWR

Tokyo Metropolitan Infectious Disease Surveillance Center

26 May 2011 / Number 20

Surveillance System in Tokyo, Japan

The infectious diseases which all physicians must report

All physicians must report to health centers the incidence of the diseases which are shown at page one. Health centers electronically report the individual cases to Tokyo Metropolitan Infectious Disease Surveillance Center.

The infectious diseases required to be reported by the sentinels

The numbers of patients who visit the sentinel clinics or hospitals during a week are reported to health centers in Tokyo. And they electronically report the numbers to Tokyo Metropolitan Infectious Disease Surveillance Center. We have about 500 sentinel clinics and hospitals in Tokyo.

1st Week is early January and 52nd Week is end of December.

Tokyo Metropolitan Institute of Public Health
Epidemiological Information Office

TEL:81-3-3363-3213 FAX:81-3-5332-7365
e-mail:idsc@tokyo-eiken.go.jp
URL:idsc.tokyo-eiken.go.jp/

Number of patients with the diseases which all physicians must report

Category	Diseases	Tokyo				Japan		
		17th	18th	19th	20th	Cum 2011	20th	Cum 2011
I	Ebola hemorrhagic fever							
	Crimean-Congo hemorrhagic fever							
	Smallpox							
	South American hemorrhagic fever							
	Plague							
	Marburg disease							
	Lassa fever							
II	Acute poliomyelitis			1		1		1
	Tuberculosis	81	42	73	51	1,709	306	10,416
	Diphtheria							
	Severe Acute Respiratory Syndrome(SARS)							
	Avian influenza H5N1							
III	Cholera							1
	Shigellosis		2	2	2	21	3	78
	Enterohemorrhagic Escherichia coli infection			4	3	31	64	462
	Typhoid fever		1		1	2	2	5
	Paratyphoid fever				1	8	1	12
IV	Hepatitis E			1		6	1	27
	West Nile fever							
	Hepatitis A	1		2		15	2	120
	Echinococcosis					1		9
	Yellow fever							
	Psittacosis					1		7
	Omsk hemorrhagic fever							
	Relapsing fever							
	Kyasanur forest disease							
	Q fever							
	Rabies							
	Coccidioidomycosis					2		2
	Monkeypox							
	Hemorrhagic fever with renal syndrome							
	Western equine encephalitis							
	Tick-borne encephalitis							
	Anthrax							
	Chikungunya fever							3
	Scrub typhus(Tsutsugamushi disease)					7	8	62
	Dengue fever				1	12	1	36
	Eastern equine encephalitis							
	Avian influenza (excluding H5N1)							
	Nipah virus infection							
	Japanese spotted fever						1	3
	Japanese encephalitis					1		1
	Hantavirus pulmonary syndrome							
	Herpes B virus infection							
	Glanders							
	Brucellosis							
	Venezuelan equine encephalitis							
	Hendra virus infection							
Epidemic typhus								
Botulism							2	
Malaria			1		8	1	21	
Tularemia								
Lyme disease					2		2	
Lyssavirus infection(excluding rabies)								
Rift valley fever								
Melioidosis								
Legionellosis		1	3	1	19	12	199	
Leptospirosis	1				3	1	5	
Rocky mountain spotted fever								

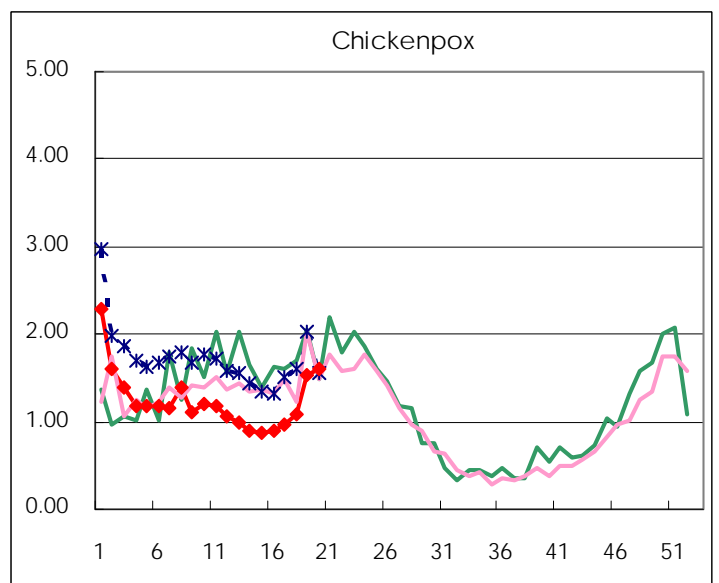
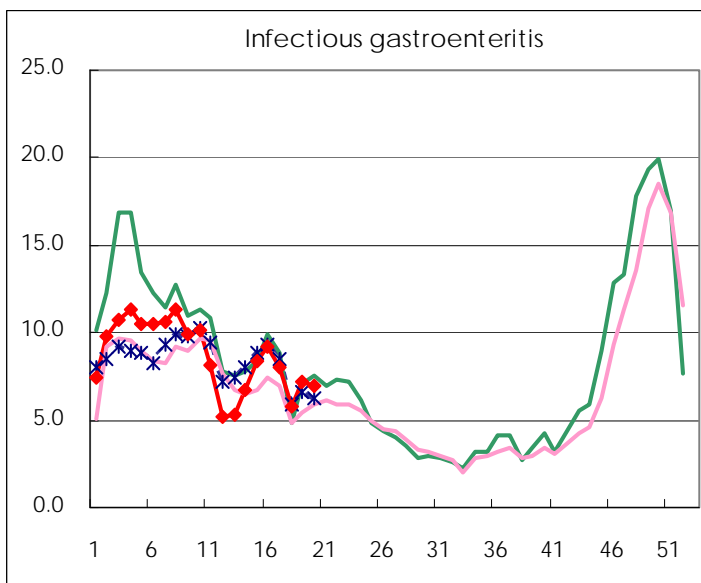
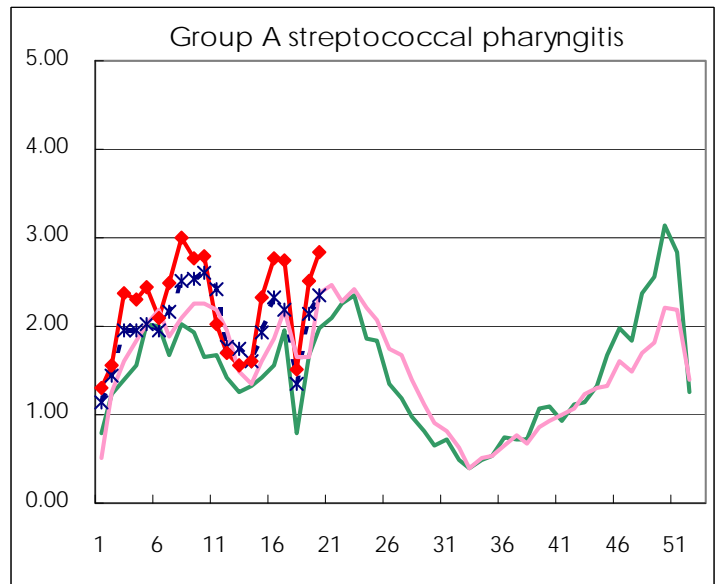
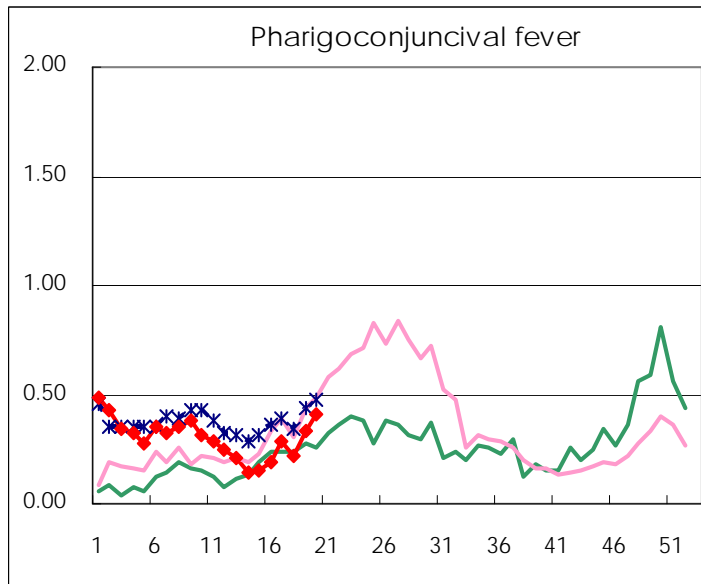
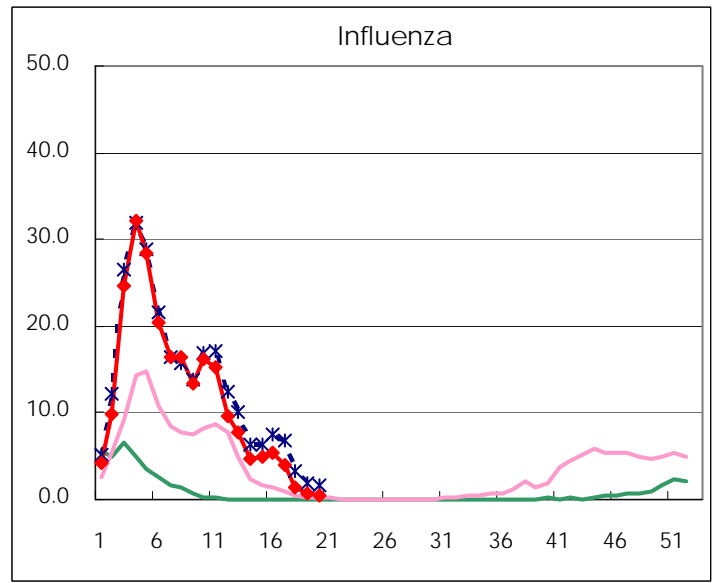
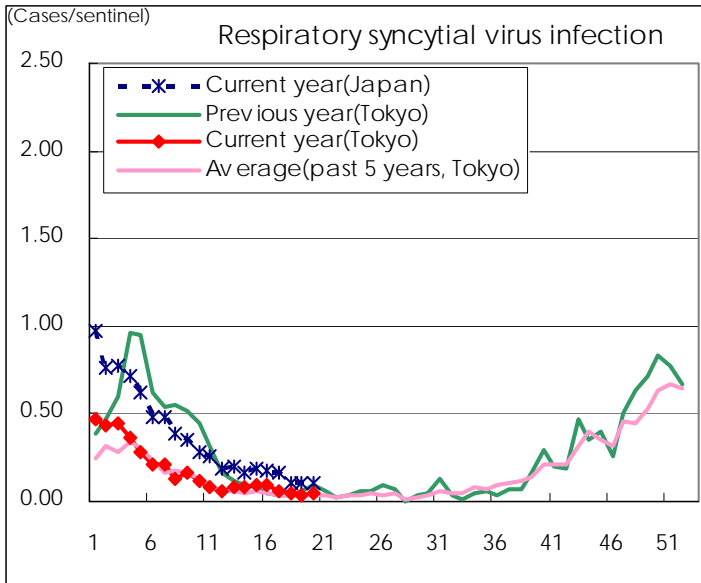
Category	Diseases	Tokyo					Japan	
		17th	18th	19th	20th	Cum 2011	20th	Cum 2011
V	Amebiasis	3	1	3	4	65	10	287
	Viral hepatitis(excluding hepatitis A and E)				3	14	5	88
	Acute encephalitis(excluding JE and WNE)					7	2	138
	Cryptosporidiosis					2		3
	Creutzfeldt-Jakob disease				1	9	1	45
	Severe invasive streptococcal infections(TSLS)		1	1	2	17	4	90
	Acquired immunodeficiency syndrome (AIDS)	6	3	8	5	152	9	490
	Giardiasis		1			5	1	26
	Meningococcal meningitis		1			1	1	4
	Congenital rubella syndrome							
	Syphilis	5	4	5	5	72	4	245
	Tetanus			1	1	3	2	33
	Vancomycin-resistant S. aureus infection							
	Vancomycin-resistant Enterococcus infection						1	20
	Rubella			2	1	10	13	126
	Measles	23	13	16	19	123	37	264

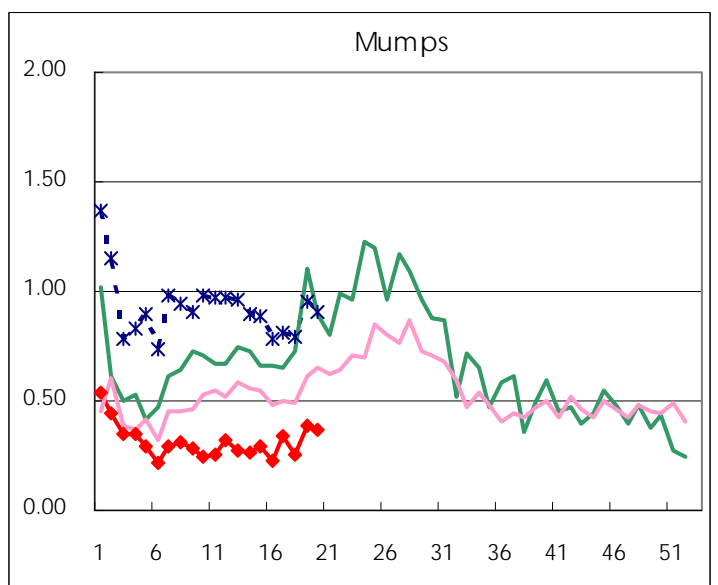
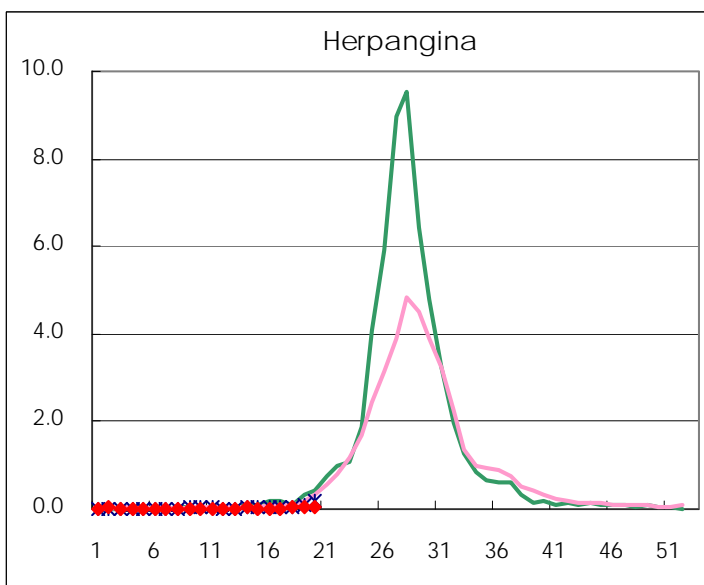
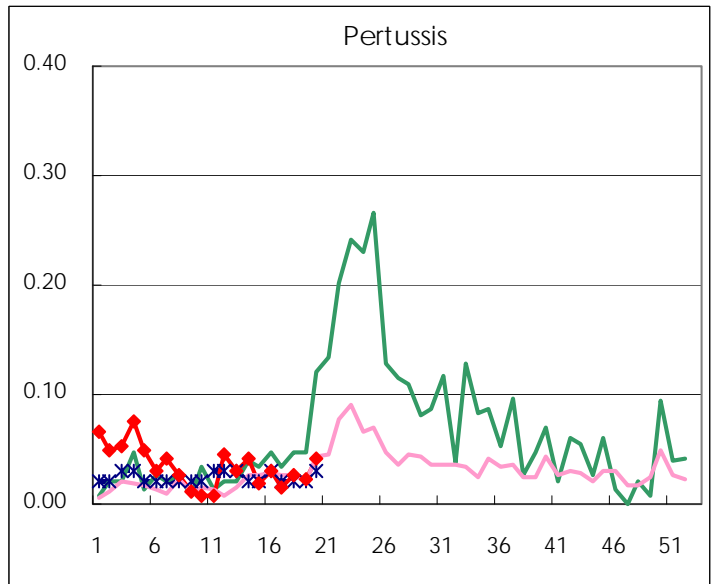
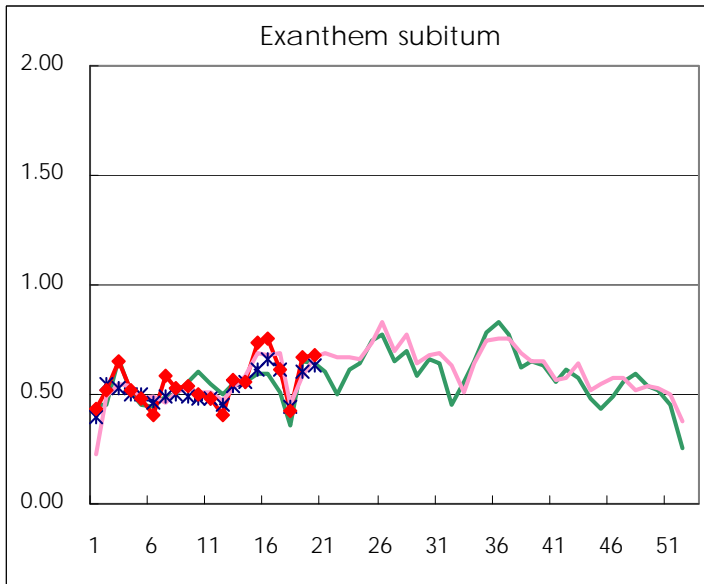
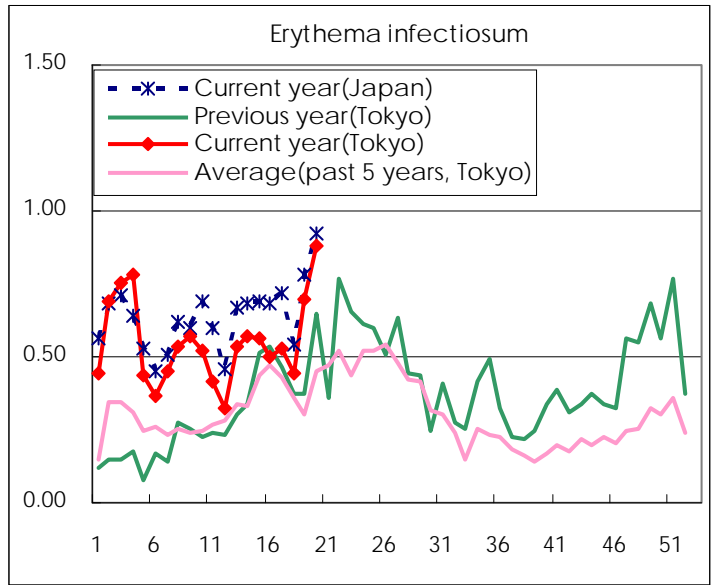
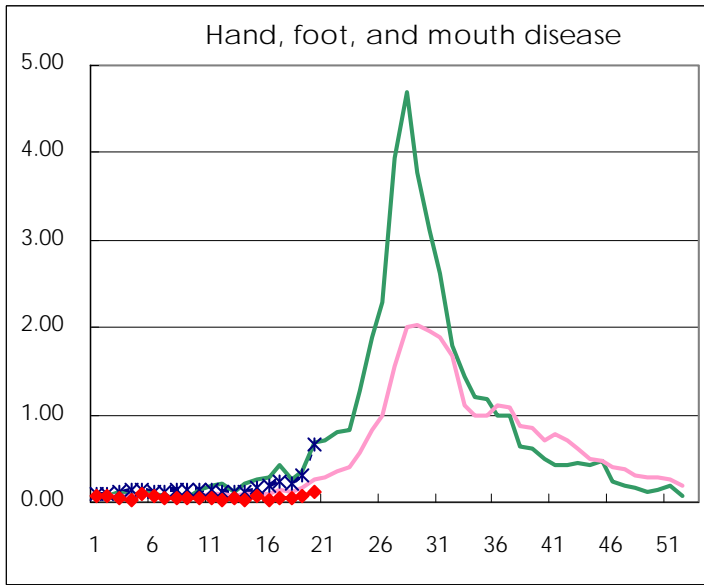
Number of patients with the diseases to be reported
by the designated clinics and hospitals

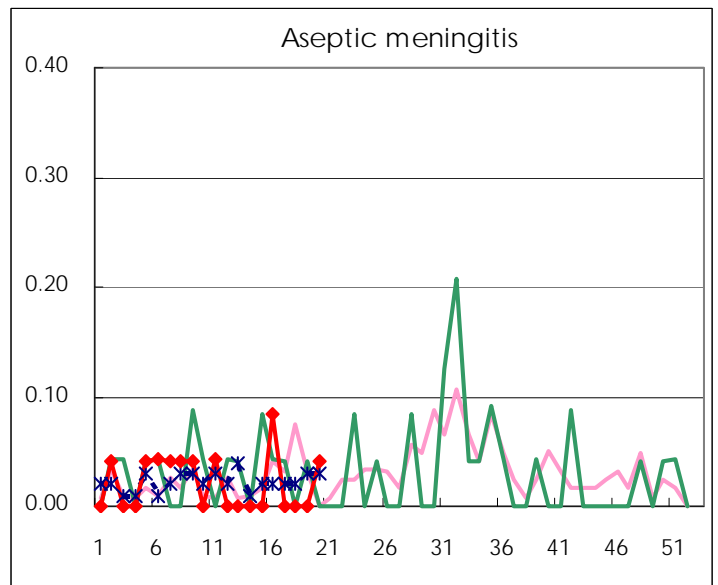
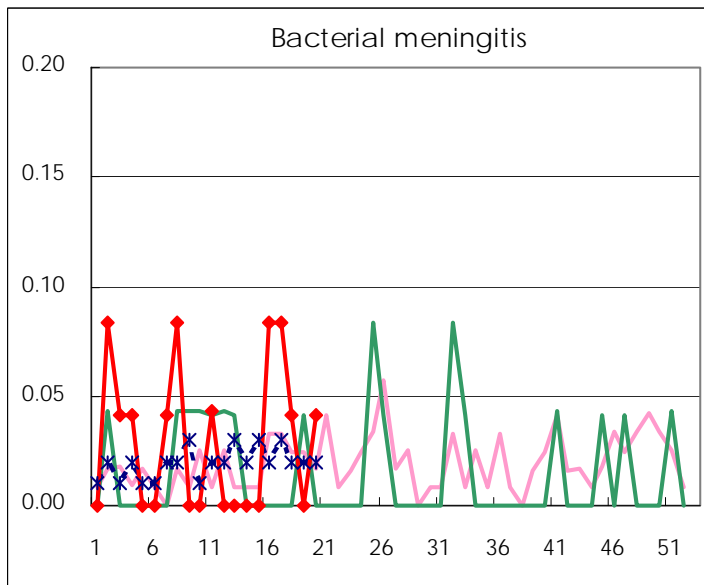
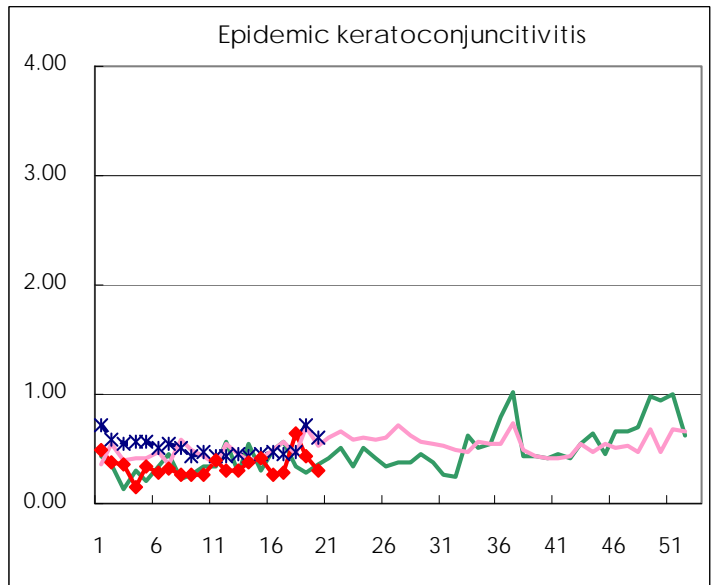
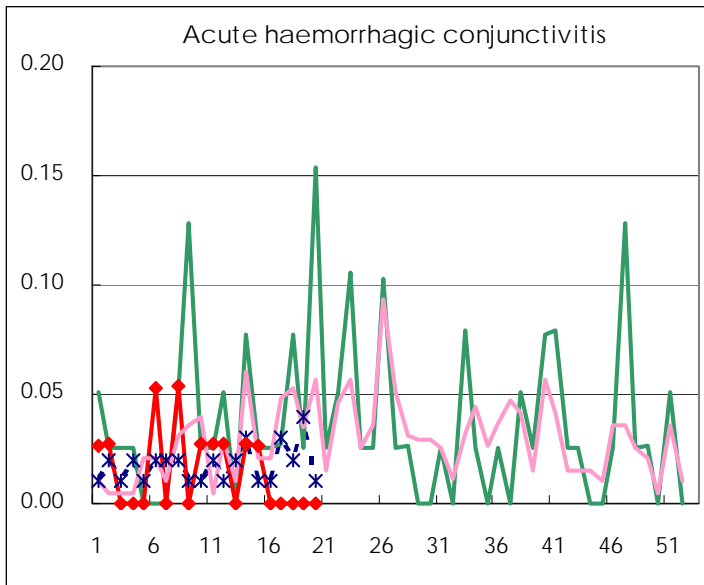
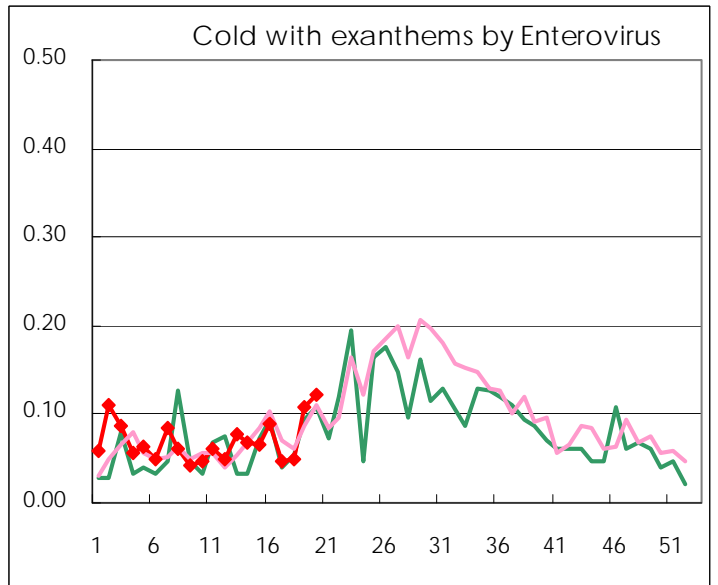
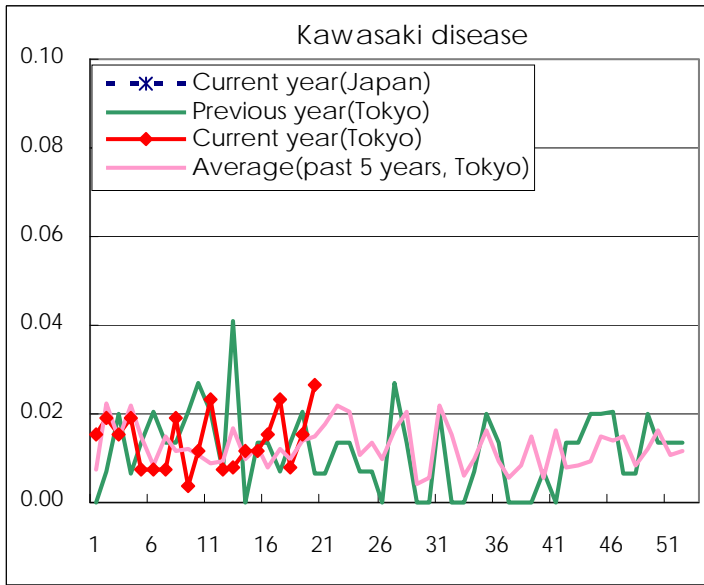
Diseases	2011				
	17th	18th	19th	20th	/sentinel
Respiratory syncytial virus infection	16	11	10	13	0.05
Pharyngoconjunctival fever	75	56	87	108	0.41
Group A streptococcal pharyngitis	712	390	660	741	2.83
Infectious gastroenteritis	2072	1,488	1,878	1,814	6.92
Chickenpox	253	284	403	421	1.61
Hand, foot, and mouth disease	14	14	18	32	0.12
Erythema infectiosum	137	115	183	230	0.88
Exanthem subitum	159	109	176	177	0.68
Pertussis	4	7	6	11	0.04
Herpangina	6	8	14	17	0.06
Mumps	88	65	102	96	0.37
Kawasaki disease	6	2	4	7	0.03
Cold with exanthems by Enterovirus	12	13	28	32	0.12
Influenza	1,656	566	308	202	0.49
Acute hemorrhagic conjunctivitis					
Epidemic keratoconjunctivitis	10	24	16	11	0.30
Bacterial meningitis	2	1		1	0.04
Aseptic meningitis				1	0.04
Mycoplasma pneumonia	4	11	5	4	0.17
Chlamydial pneumonia (excluding psittacosis)					

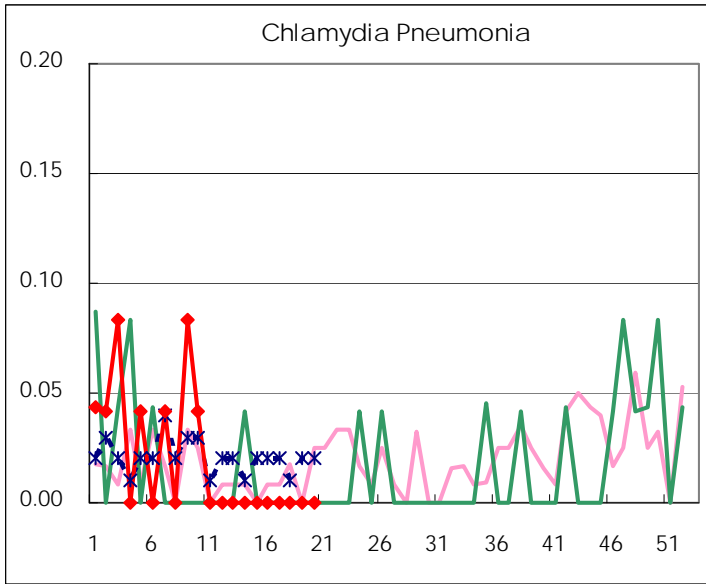
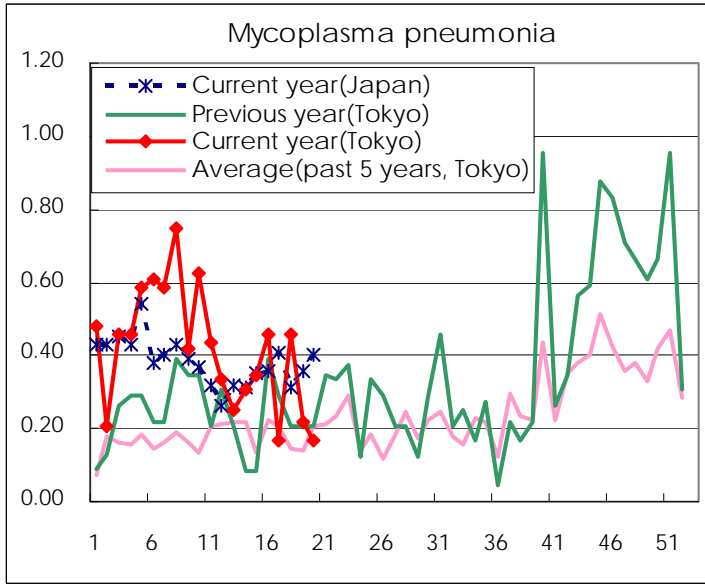
(Blank means 0.)

Disease Trend Graph (weekly reported cases per sentinel in comparison)









Number of sentinel facilities for weekly reporting		
Types of sentinels	Number of sentinels	Sentinels having reported
Pediatric	264	262
Influenza	419	416
Ophthalmic	39	37
Specially-designated	25	24

Tokyo Metropolitan Government
Infectious Disease Surveillance Center