

---

INFECTIOUS DISEASES WEEKLY REPORT

# TOKYO IDWR

Tokyo Metropolitan Infectious Disease Surveillance Center

## 2 June 2011 / Number 21

### Surveillance System in Tokyo, Japan

The infectious diseases which all physicians must report

All physicians must report to health centers the incidence of the diseases which are shown at page one. Health centers electronically report the individual cases to Tokyo Metropolitan Infectious Disease Surveillance Center.

The infectious diseases required to be reported by the sentinels

The numbers of patients who visit the sentinel clinics or hospitals during a week are reported to health centers in Tokyo. And they electronically report the numbers to Tokyo Metropolitan Infectious Disease Surveillance Center. We have about 500 sentinel clinics and hospitals in Tokyo.

1st Week is early January and 52nd Week is end of December.

Tokyo Metropolitan Institute of Public Health  
Epidemiological Information Office

TEL:81-3-3363-3213 FAX:81-3-5332-7365

e-mail:[idsc@tokyo-eiken.go.jp](mailto:idsc@tokyo-eiken.go.jp)

URL:[idsc.tokyo-eiken.go.jp/](http://idsc.tokyo-eiken.go.jp/)

---

## Number of patients with the diseases which all physicians must report

Category	Diseases	Tokyo				Japan		
		18th	19th	20th	21st	Cum 2011	21st	Cum 2011
I	Ebola hemorrhagic fever							
	Crimean-Congo hemorrhagic fever							
	Smallpox							
	South American hemorrhagic fever							
	Plague							
	Marburg disease							
	Lassa fever							
II	Acute poliomyelitis		1			1		1
	Tuberculosis	42	77	61	69	1,793	429	11,147
	Diphtheria							
	Severe Acute Respiratory Syndrome(SARS)							
	Avian influenza H5N1							
III	Cholera						1	2
	Shigellosis	2	2	2		21	1	80
	Enterohemorrhagic Escherichia coli infection		4	3		31	49	515
	Typhoid fever	1		1		2		5
	Paratyphoid fever			1		8		12
IV	Hepatitis E		1			6		28
	West Nile fever							
	Hepatitis A		2		1	16		122
	Echinococcosis					1		10
	Yellow fever							
	Psittacosis					1		7
	Omsk hemorrhagic fever							
	Relapsing fever							
	Kyasanur forest disease							
	Q fever							
	Rabies							
	Coccidioidomycosis					2		2
	Monkeypox							
	Hemorrhagic fever with renal syndrome							
	Western equine encephalitis							
	Tick-borne encephalitis							
	Anthrax							
	Chikungunya fever							3
	Scrub typhus(Tsutsugamushi disease)				1	8	12	81
	Dengue fever			1		12	1	38
	Eastern equine encephalitis							
	Avian influenza (excluding H5N1)							
	Nipah virus infection							
	Japanese spotted fever				1	1	5	8
	Japanese encephalitis					1		1
	Hantavirus pulmonary syndrome							
	Herpes B virus infection							
	Glanders							
	Brucellosis							
	Venezuelan equine encephalitis							
Hendra virus infection								
Epidemic typhus								
Botulism							2	
Malaria		1		1	9	1	23	
Tularemia								
Lyme disease					2		2	
Lyssavirus infection(excluding rabies)								
Rift valley fever								
Melioidosis								
Legionellosis	1	3	1	2	21	7	208	
Leptospirosis					3		5	
Rocky mountain spotted fever								

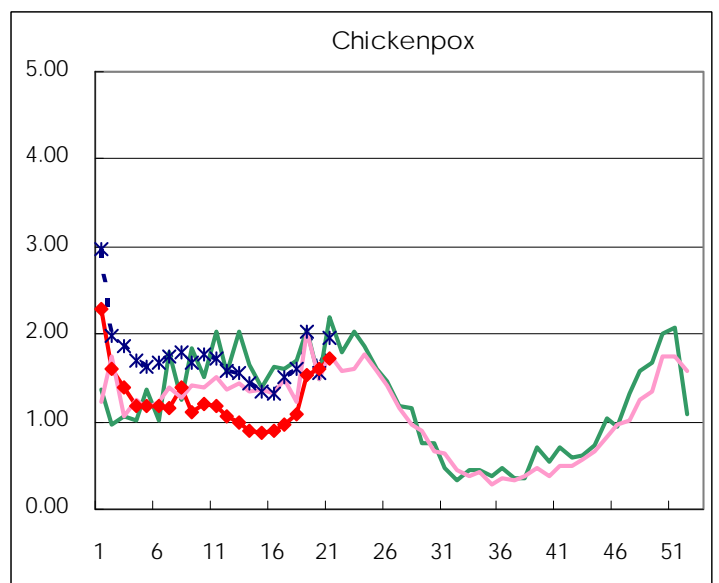
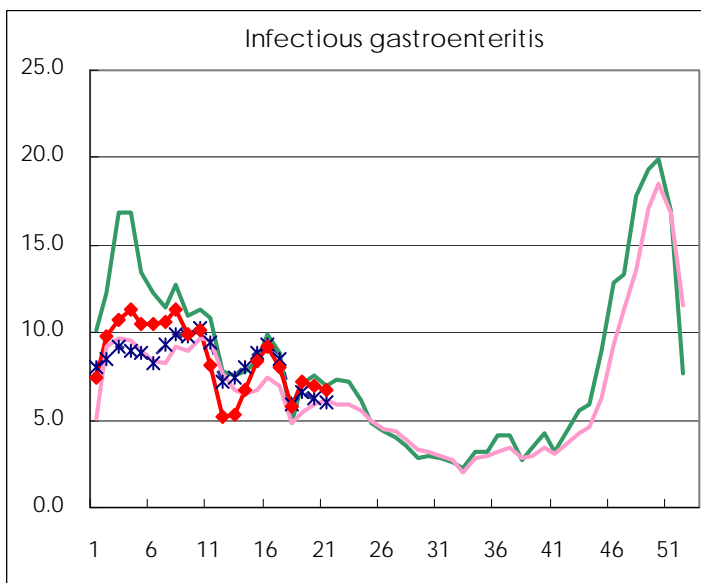
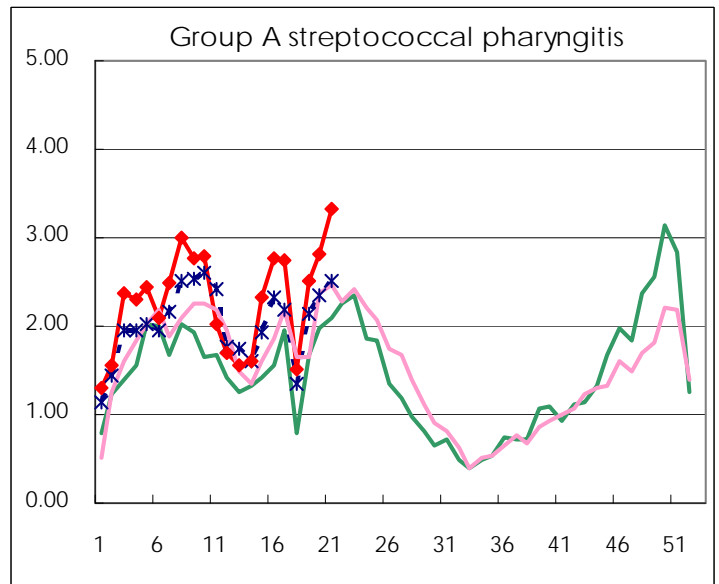
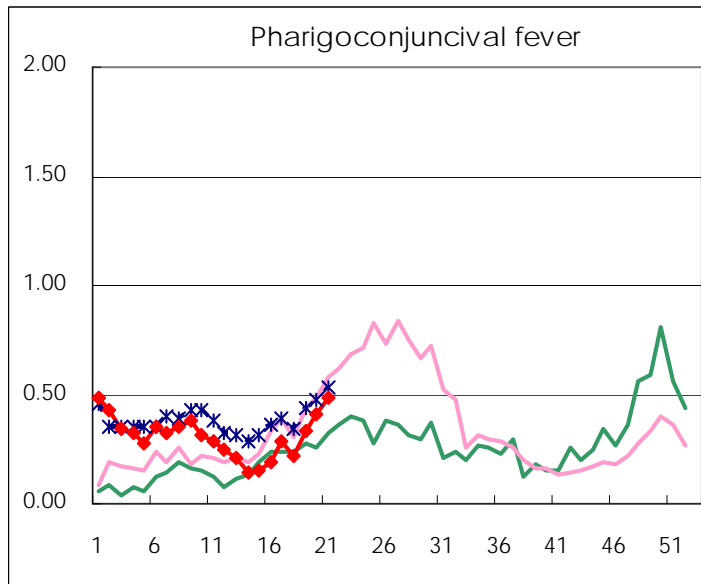
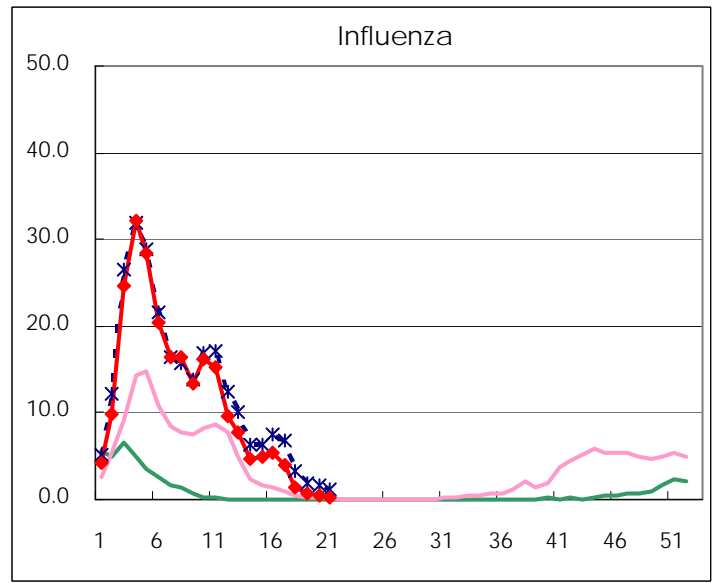
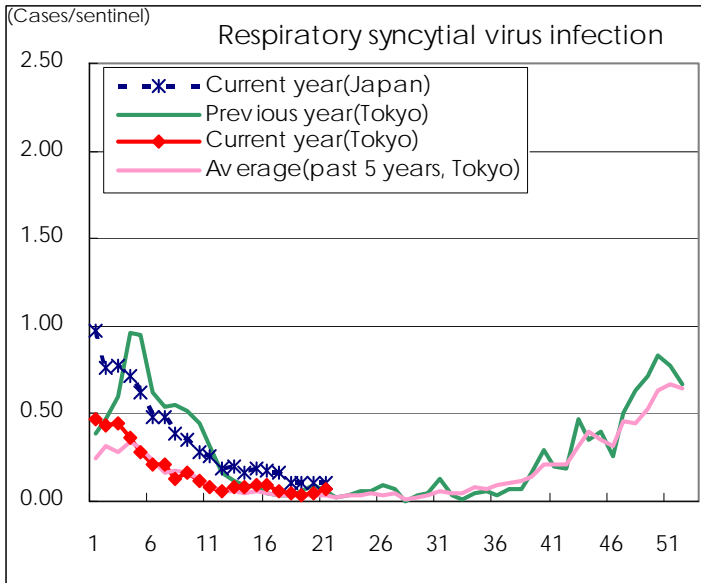
Category	Diseases	Tokyo				Japan		
		18th	19th	20th	21st	Cum 2011	21st	Cum 2011
V	Amebiasis	1	3	4	1	66	4	302
	Viral hepatitis(excluding hepatitis A and E)			3		14	2	91
	Acute encephalitis(excluding JE and WNE)					7	1	141
	Cryptosporidiosis					2		3
	Creutzfeldt-Jakob disease			1		9		46
	Severe invasive streptococcal infections(TSLS)	1	1	2	1	18	4	96
	Acquired immunodeficiency syndrome (AIDS)	3	8	5	11	163	10	519
	Giardiasis	1				5		26
	Meningococcal meningitis	1				1	1	5
	Congenital rubella syndrome							
	Syphilis	4	5	5	2	74	8	258
	Tetanus		1	1		3	2	39
	Vancomycin-resistant S. aureus infection							
	Vancomycin-resistant Enterococcus infection						1	22
	Rubella		2	1	3	13	13	150
	Measles	13	16	19	11	134	18	281

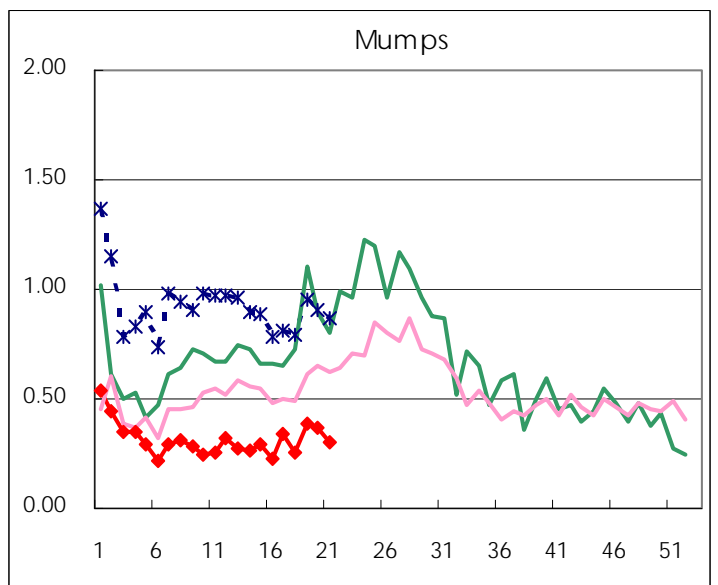
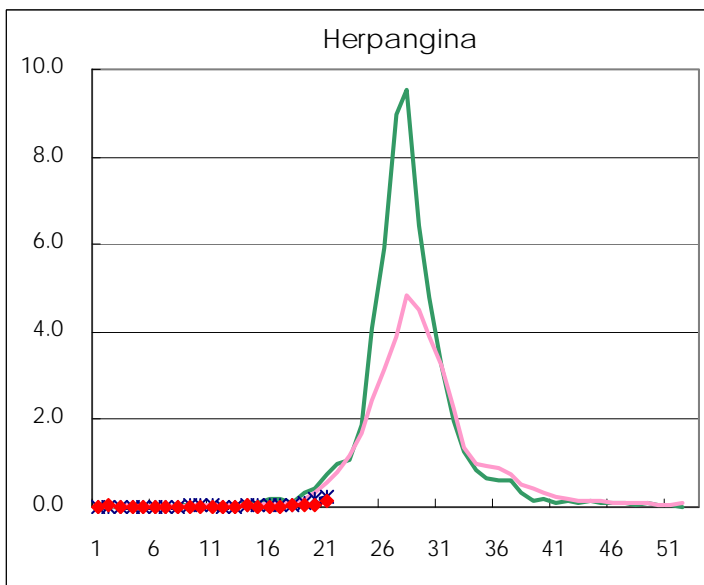
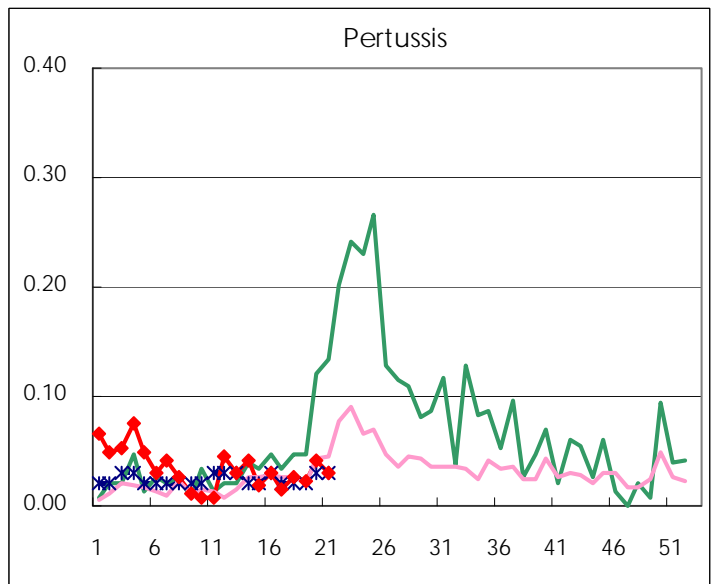
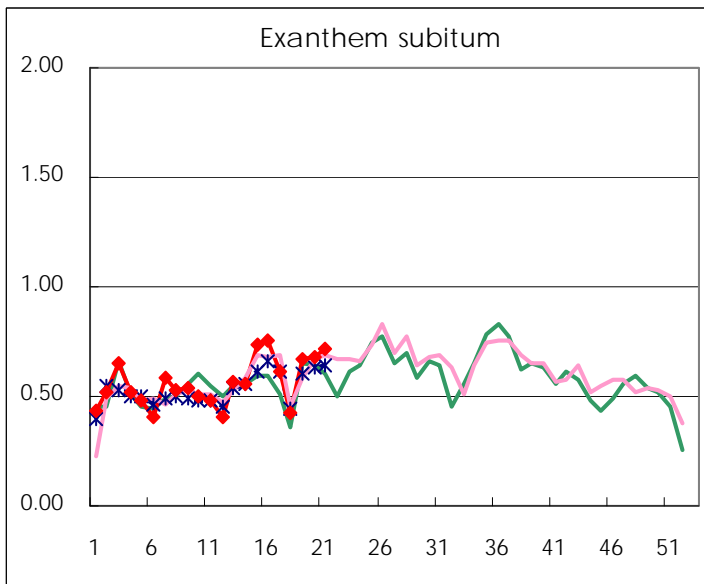
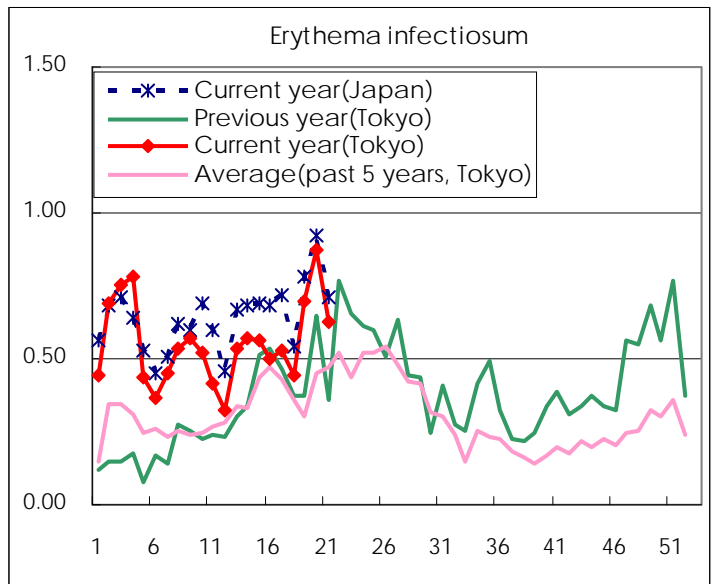
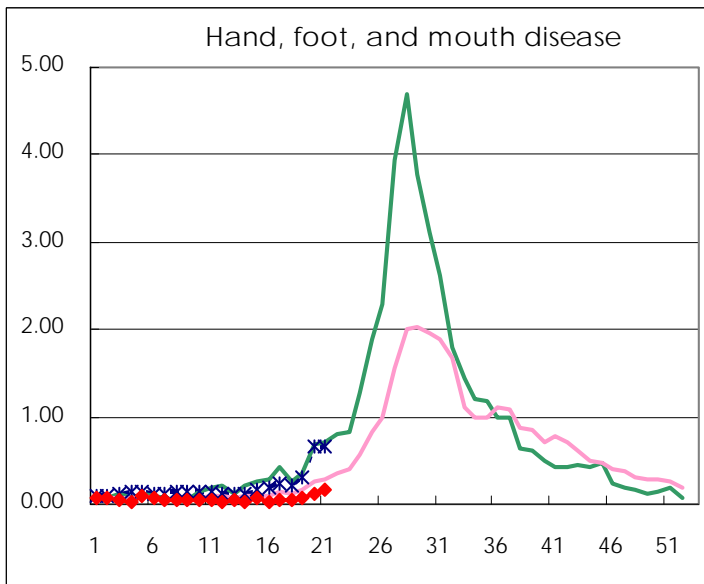
Number of patients with the diseases to be reported  
by the designated clinics and hospitals

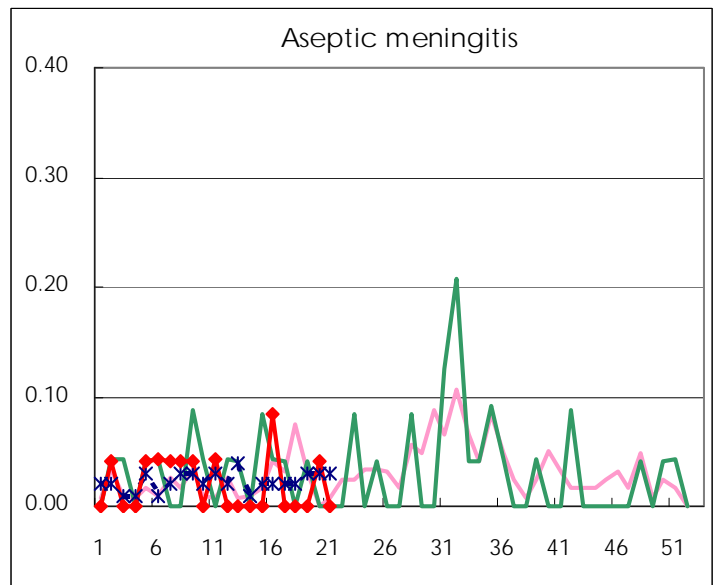
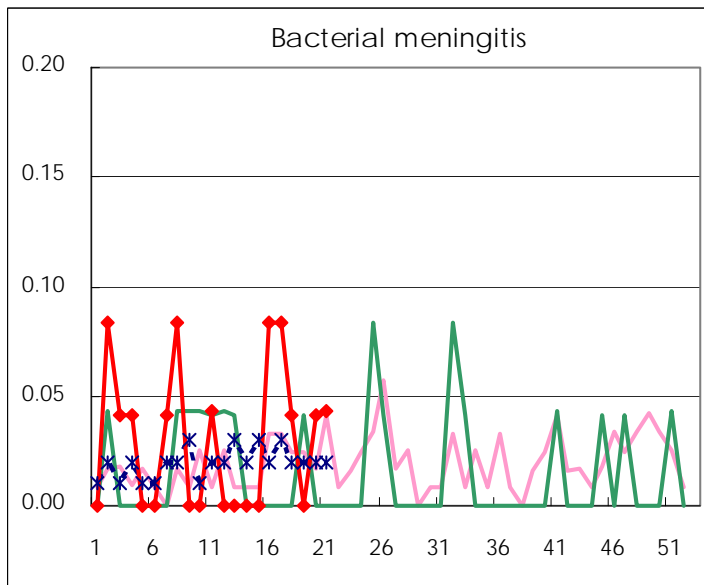
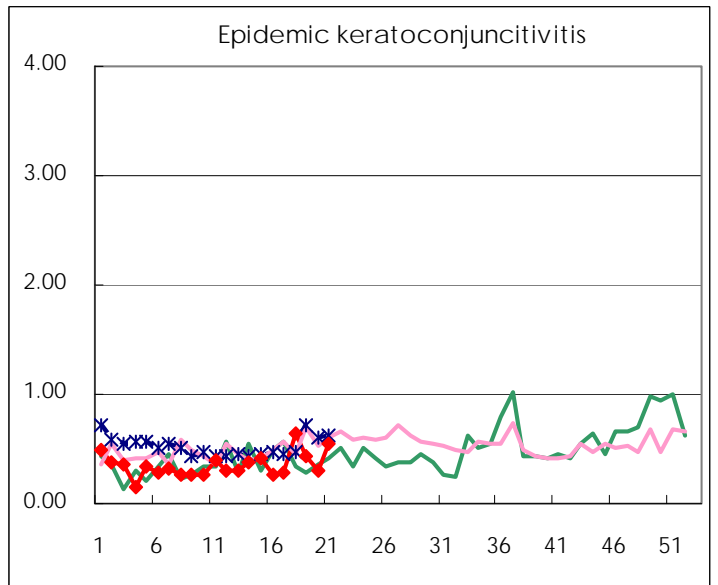
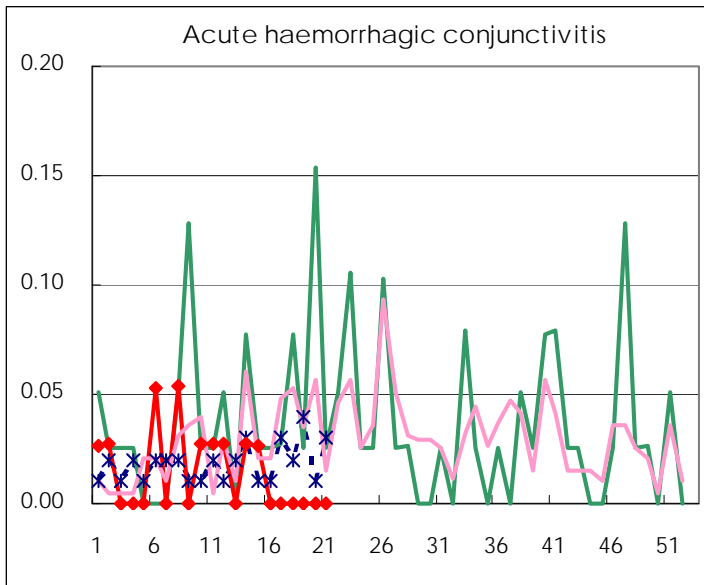
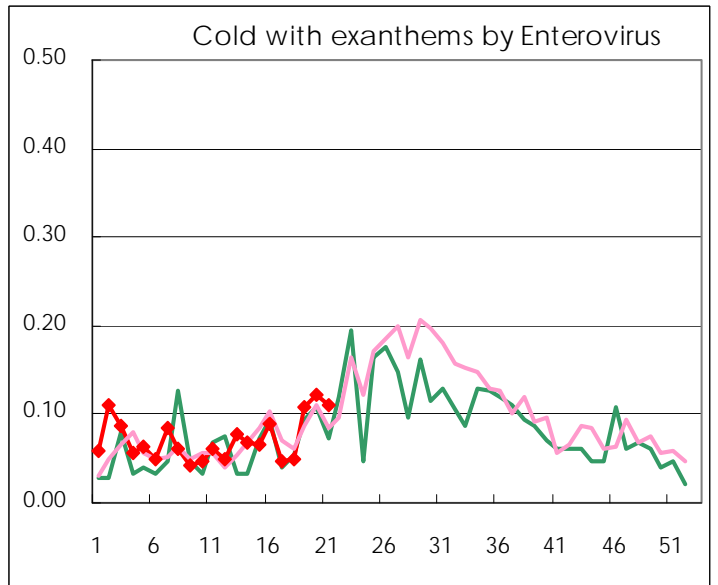
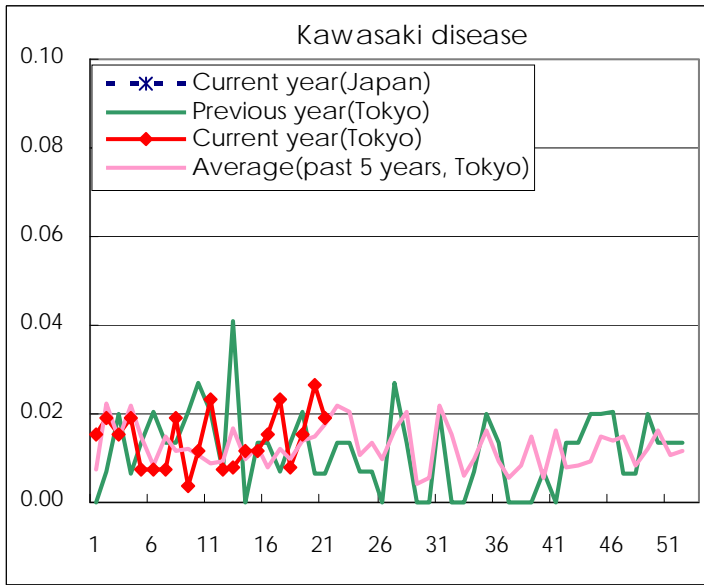
Diseases	2011				
	18th	19th	20th	21st	/sentinel
Respiratory syncytial virus infection	11	10	13	17	0.07
Pharyngoconjunctival fever	56	87	108	126	0.48
Group A streptococcal pharyngitis	390	660	741	868	3.33
Infectious gastroenteritis	1488	1,878	1,817	1,740	6.67
Chickenpox	284	403	422	452	1.73
Hand, foot, and mouth disease	14	18	32	41	0.16
Erythema infectiosum	115	183	230	164	0.63
Exanthem subitum	109	176	178	188	0.72
Pertussis	7	6	11	8	0.03
Herpangina	8	14	17	32	0.12
Mumps	65	102	96	78	0.30
Kawasaki disease	2	4	7	5	0.02
Cold with exanthems by Enterovirus	13	28	32	29	0.11
Influenza	566	308	202	94	0.23
Acute hemorrhagic conjunctivitis					
Epidemic keratoconjunctivitis	24	16	11	20	0.54
Bacterial meningitis	1		1	1	0.04
Aseptic meningitis			1		
Mycoplasma pneumonia	11	5	4	10	0.43
Chlamydial pneumonia (excluding psittacosis)					

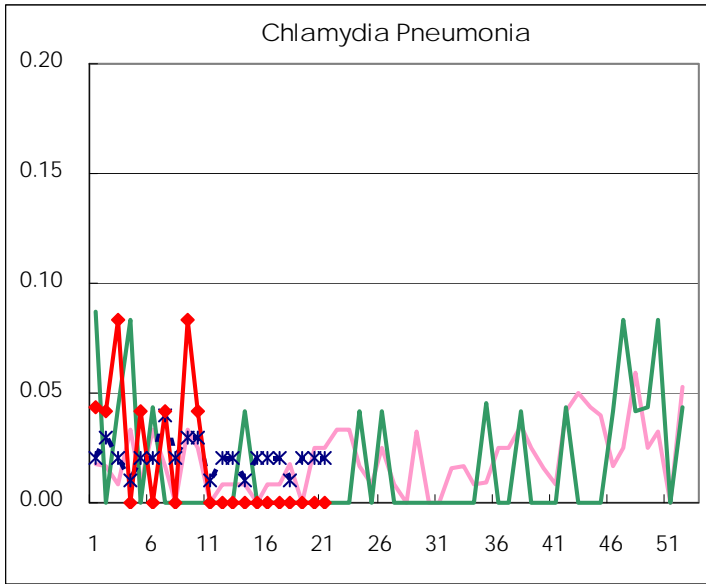
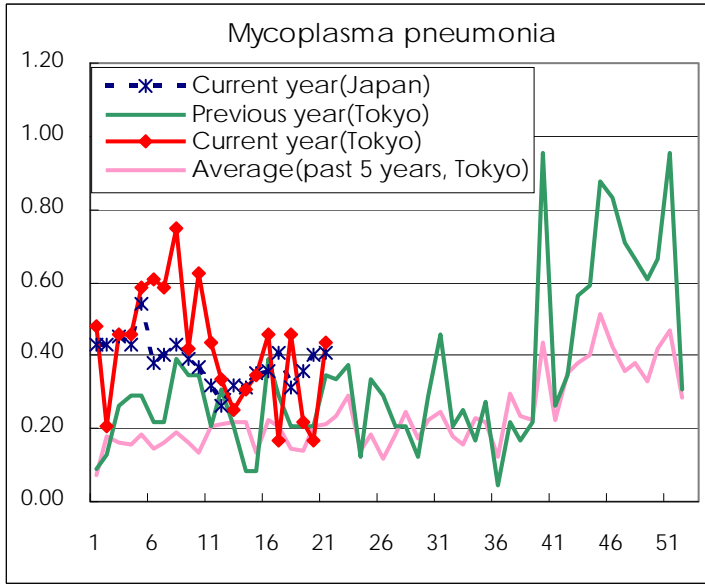
( Blank means 0. )

# Disease Trend Graph (weekly reported cases per sentinel in comparison)









Number of sentinel facilities for weekly reporting		
Types of sentinels	Number of sentinels	Sentinels having reported
Pediatric	264	261
Influenza	419	412
Ophthalmic	39	37
Specially-designated	25	23

**Tokyo Metropolitan Government**  
**Infectious Disease Surveillance Center**