
INFECTIOUS DISEASES WEEKLY REPORT

TOKYO IDWR

Tokyo Metropolitan Infectious Disease Surveillance Center

9 June 2011 / Number 22

Surveillance System in Tokyo, Japan

The infectious diseases which all physicians must report

All physicians must report to health centers the incidence of the diseases which are shown at page one. Health centers electronically report the individual cases to Tokyo Metropolitan Infectious Disease Surveillance Center.

The infectious diseases required to be reported by the sentinels

The numbers of patients who visit the sentinel clinics or hospitals during a week are reported to health centers in Tokyo. And they electronically report the numbers to Tokyo Metropolitan Infectious Disease Surveillance Center. We have about 500 sentinel clinics and hospitals in Tokyo.

1st Week is early January and 52nd Week is end of December.

Tokyo Metropolitan Institute of Public Health
Epidemiological Information Office

TEL:81-3-3363-3213 FAX:81-3-5332-7365

e-mail:idsc@tokyo-eiken.go.jp

URL:idsc.tokyo-eiken.go.jp/

Number of patients with the diseases which all physicians must report

Category	Diseases	Tokyo				Japan		
		19th	20th	21st	22nd	Cum 2011	22nd	Cum 2011
I	Ebola hemorrhagic fever							
	Crimean-Congo hemorrhagic fever							
	Smallpox							
	South American hemorrhagic fever							
	Plague							
	Marburg disease							
	Lassa fever							
II	Acute poliomyelitis	1				1		1
	Tuberculosis	77	61	71	50	1,858	379	11,774
	Diphtheria							
	Severe Acute Respiratory Syndrome(SARS)							
	Avian influenza H5N1							
III	Cholera							2
	Shigellosis	2	2		1	22	2	82
	Enterohemorrhagic Escherichia coli infection	4	3		1	32	38	572
	Typhoid fever		1			2	2	7
	Paratyphoid fever		1			8		12
IV	Hepatitis E	1				6	2	30
	West Nile fever							
	Hepatitis A	2		1		16	1	123
	Echinococcosis					1		10
	Yellow fever							
	Psittacosis					1		8
	Omsk hemorrhagic fever							
	Relapsing fever							
	Kyasanur forest disease							
	Q fever							
	Rabies							
	Coccidioidomycosis					2		2
	Monkeypox							
	Hemorrhagic fever with renal syndrome							
	Western equine encephalitis							
	Tick-borne encephalitis							
	Anthrax							
	Chikungunya fever						1	4
	Scrub typhus(Tsutsugamushi disease)			1		8	12	100
	Dengue fever		1			12	1	40
	Eastern equine encephalitis							
	Avian influenza (excluding H5N1)							
	Nipah virus infection							
	Japanese spotted fever			1		1	3	13
	Japanese encephalitis					1		1
	Hantavirus pulmonary syndrome							
	Herpes B virus infection							
	Glanders							
	Brucellosis							
	Venezuelan equine encephalitis							
	Hendra virus infection							
Epidemic typhus								
Botulism							2	
Malaria	1		1		9		23	
Tularemia								
Lyme disease					2		2	
Lyssavirus infection(excluding rabies)								
Rift valley fever								
Melioidosis								
Legionellosis	3	1	2		21	14	222	
Leptospirosis					3		5	
Rocky mountain spotted fever								

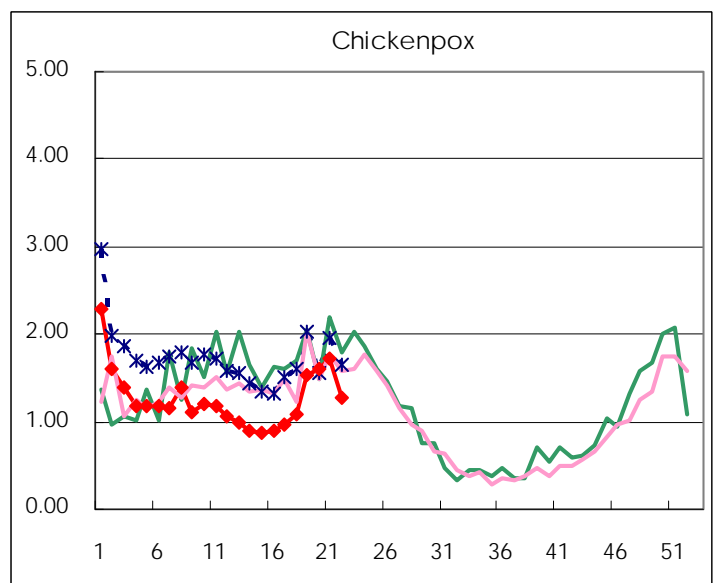
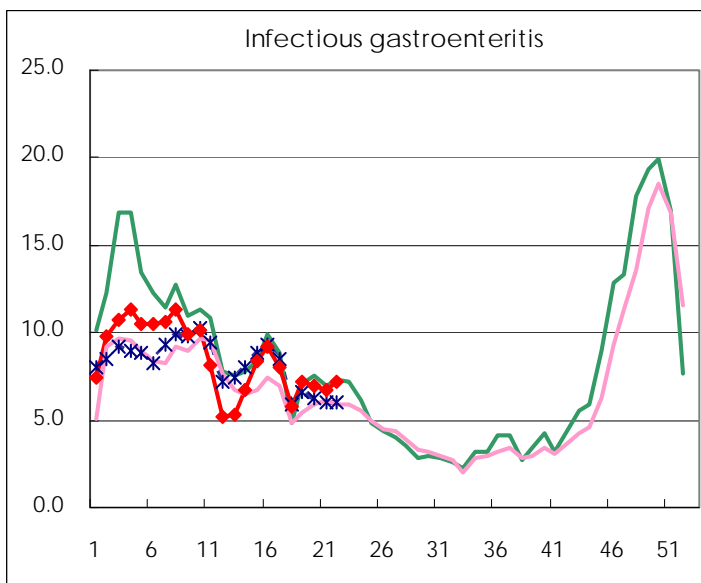
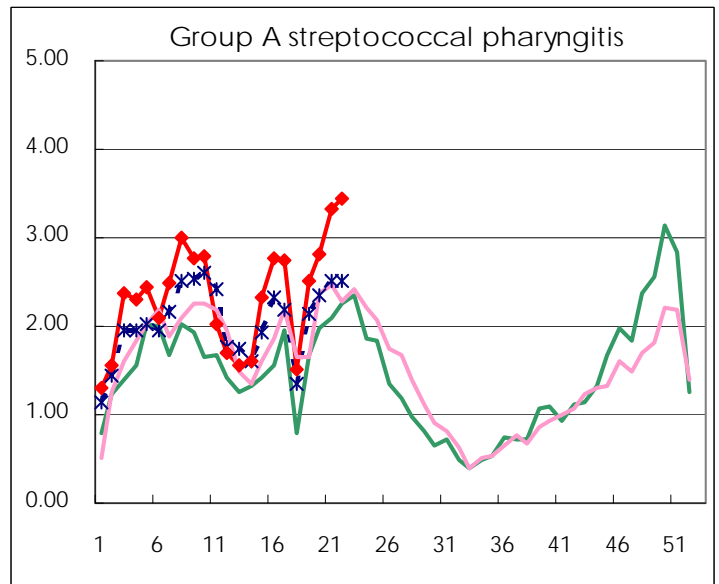
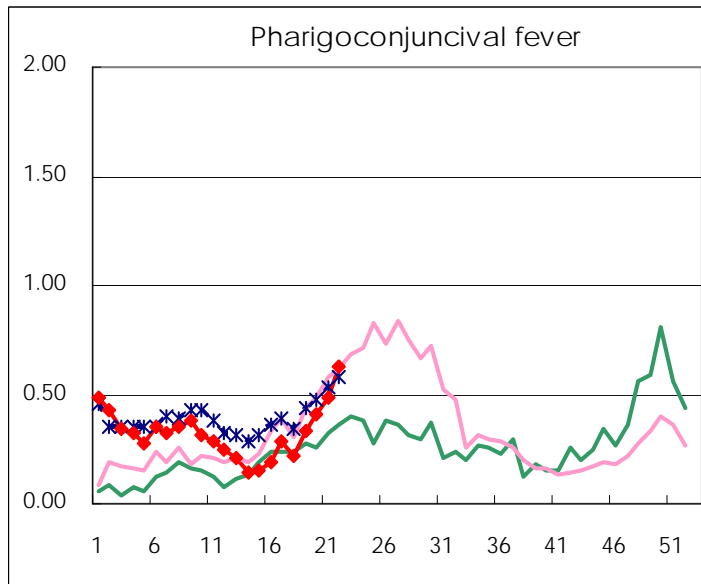
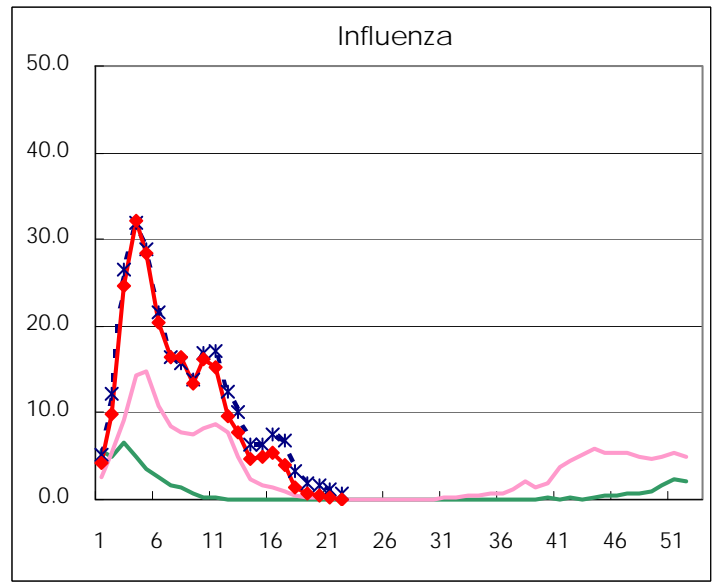
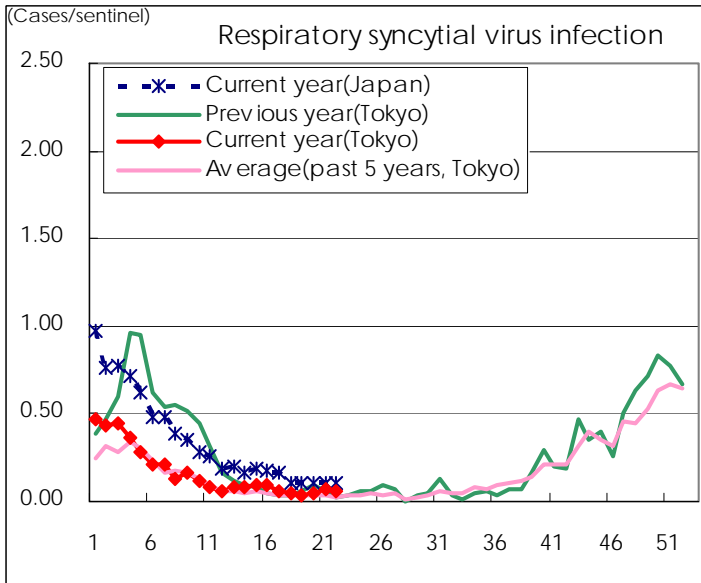
Category	Diseases	Tokyo				Japan		
		19th	20th	21st	22nd	Cum 2011	22nd	Cum 2011
V	Amebiasis	3	4	1		66	9	316
	Viral hepatitis(excluding hepatitis A and E)		3		1	15	2	97
	Acute encephalitis(excluding JE and WNE)				1	8	2	147
	Cryptosporidiosis					2		4
	Creutzfeldt-Jakob disease		1			9	1	48
	Severe invasive streptococcal infections(TSLS)	1	2	1	1	19	4	102
	Acquired immunodeficiency syndrome (AIDS)	8	5	11	9	172	19	581
	Giardiasis					5	1	28
	Meningococcal meningitis					1		5
	Congenital rubella syndrome						1	1
	Syphilis	5	5	2	5	79	12	281
	Tetanus	1	1			3		42
	Vancomycin-resistant S. aureus infection							
	Vancomycin-resistant Enterococcus infection							22
	Rubella	2	1	3		13	10	167
	Measles	16	19	12	6	141	13	297

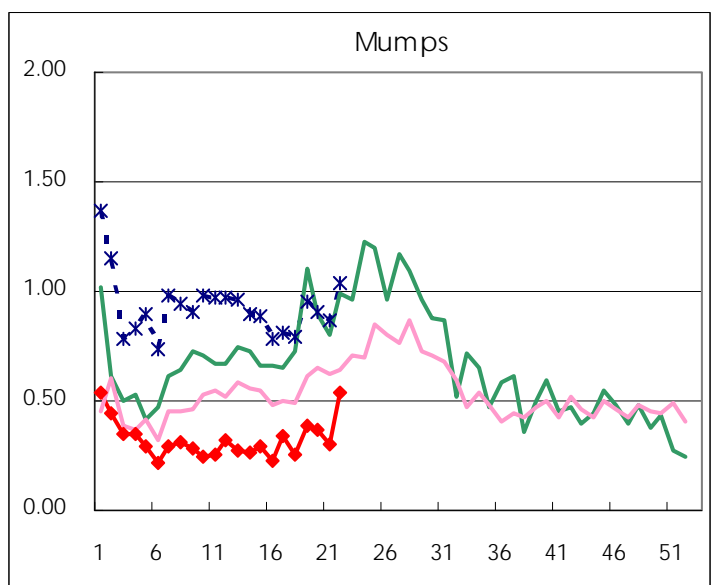
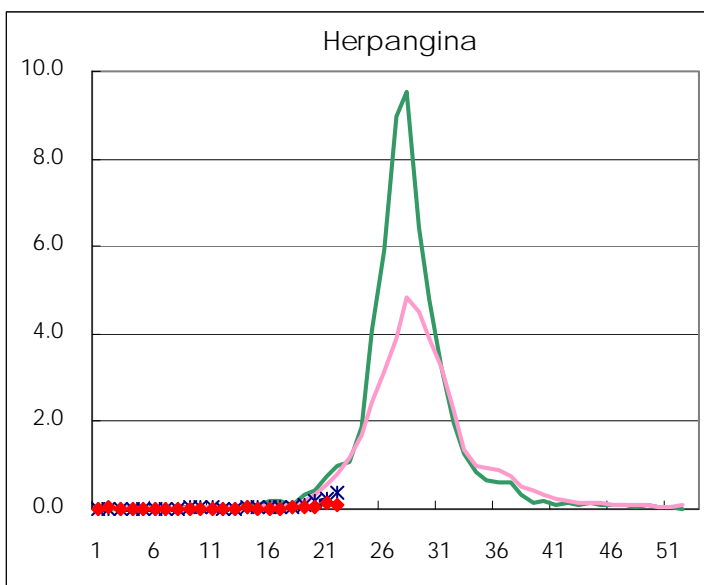
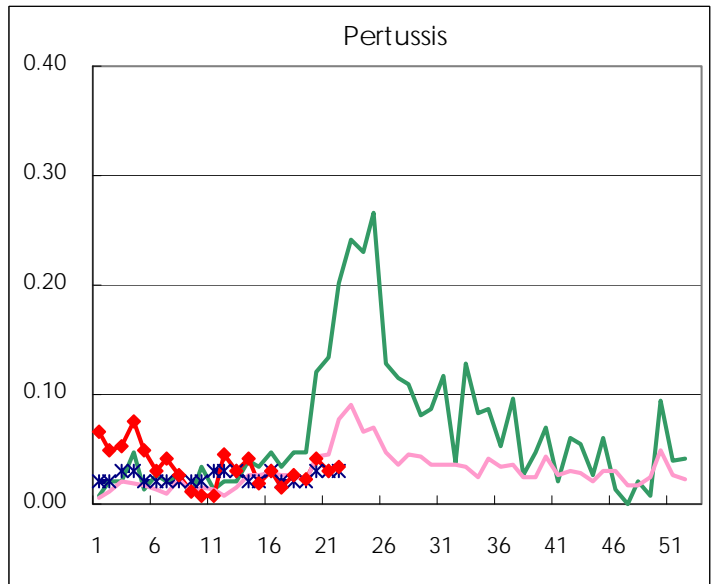
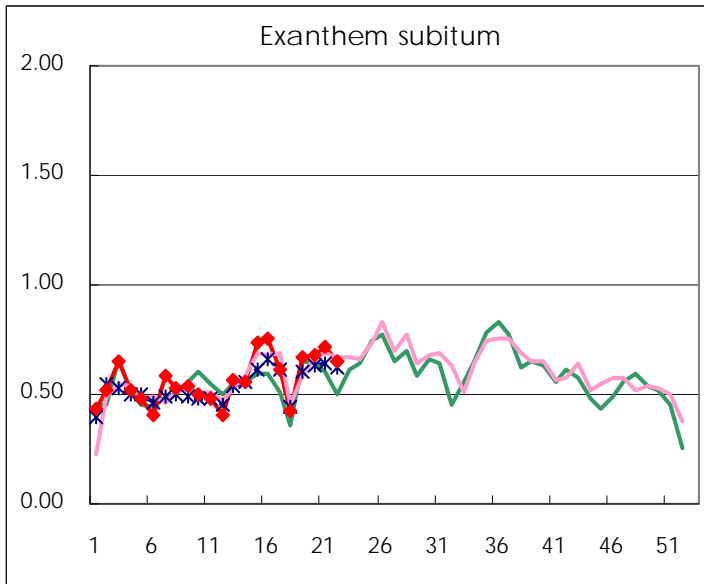
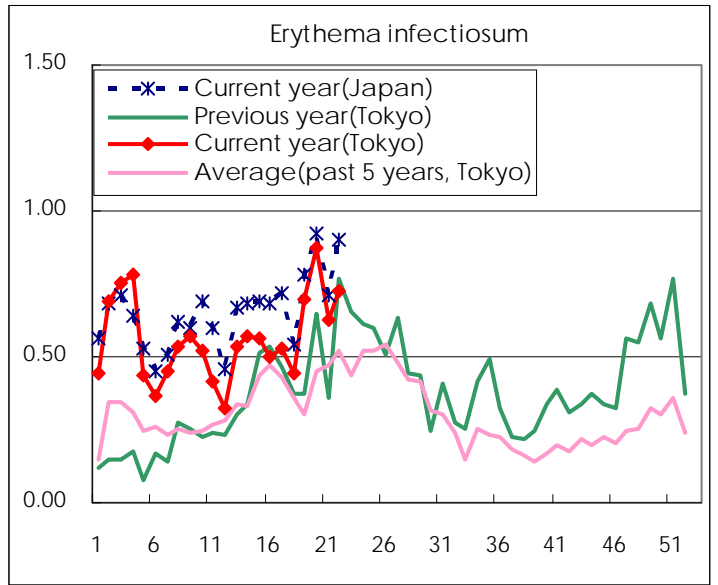
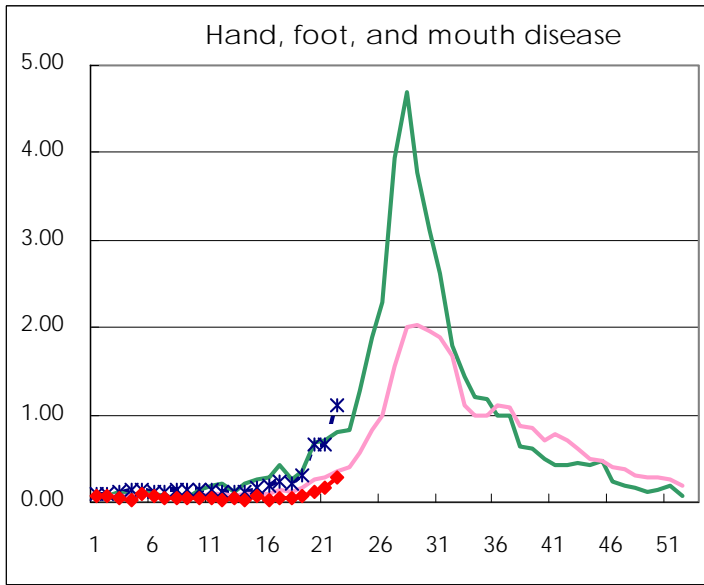
Number of patients with the diseases to be reported
by the designated clinics and hospitals

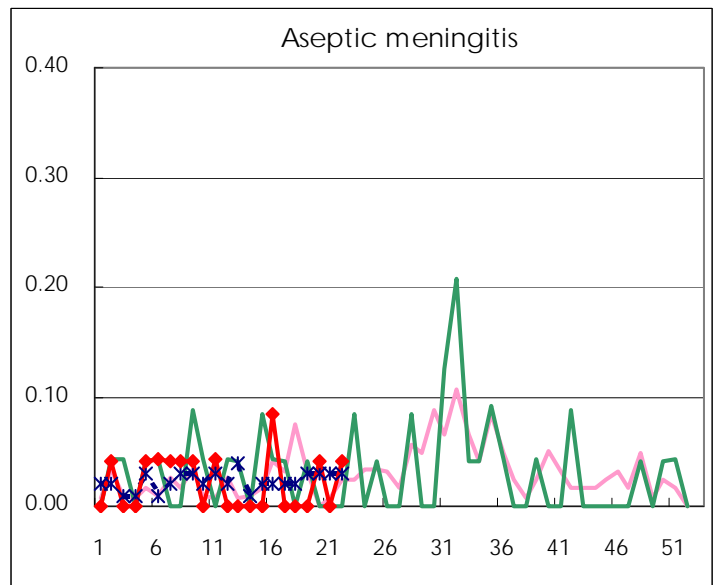
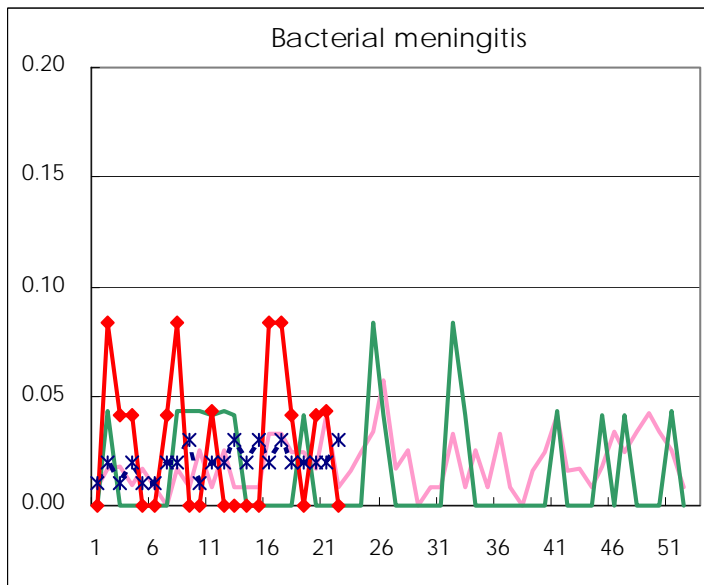
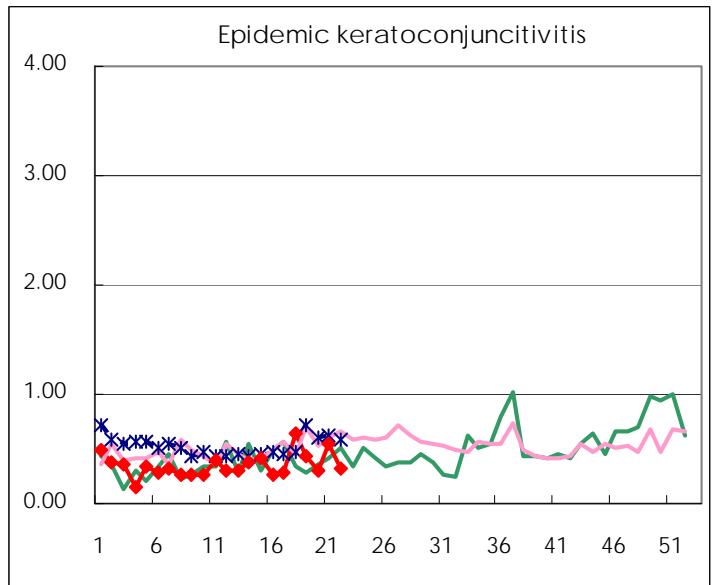
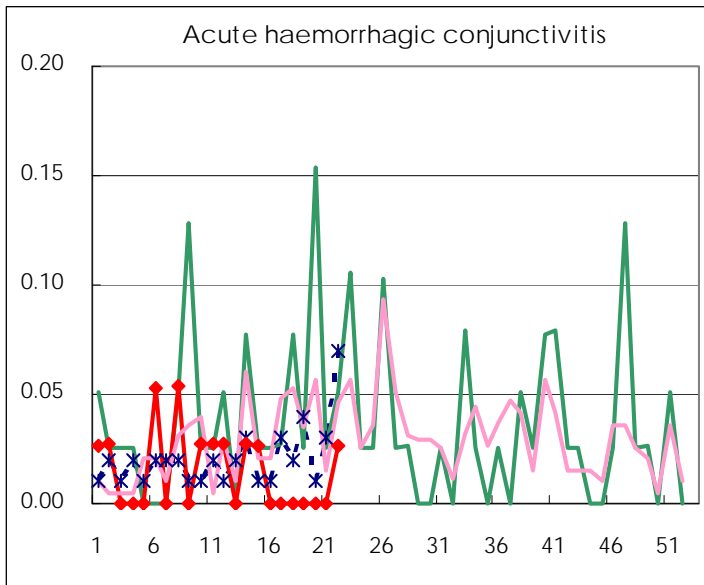
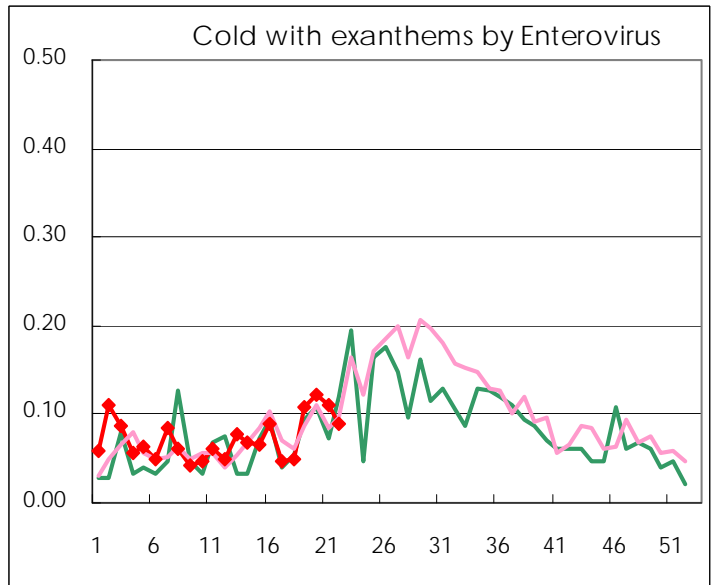
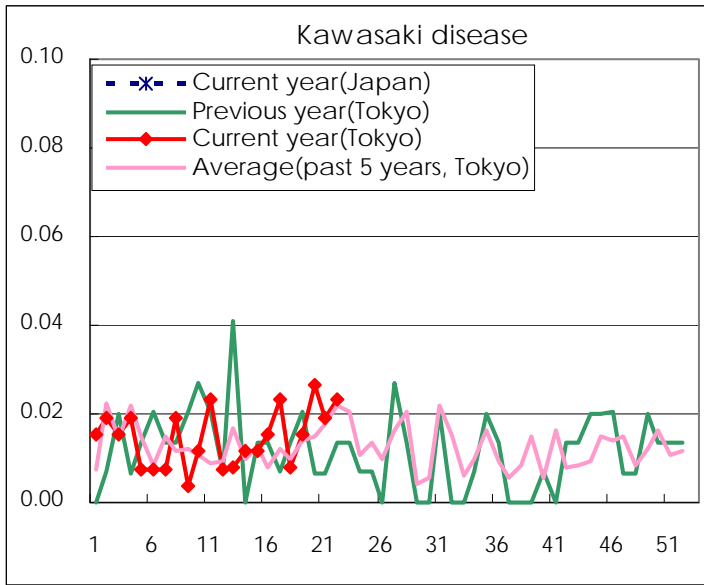
Diseases	2011				
	19th	20th	21st	22nd	/sentinel
Respiratory syncytial virus infection	10	13	17	16	0.06
Pharyngoconjunctival fever	87	108	126	163	0.63
Group A streptococcal pharyngitis	660	741	868	896	3.45
Infectious gastroenteritis	1878	1,817	1,740	1,859	7.15
Chickenpox	403	422	452	334	1.28
Hand, foot, and mouth disease	18	32	41	71	0.27
Erythema infectiosum	183	230	164	189	0.73
Exanthem subitum	176	178	188	169	0.65
Pertussis	6	11	8	9	0.03
Herpangina	14	17	32	29	0.11
Mumps	102	96	78	141	0.54
Kawasaki disease	4	7	5	6	0.02
Cold with exanthems by Enterovirus	28	32	29	23	0.09
Influenza	308	202	94	38	0.09
Acute hemorrhagic conjunctivitis				1	0.03
Epidemic keratoconjunctivitis	16	11	20	12	0.32
Bacterial meningitis		1	1		
Aseptic meningitis		1		1	0.04
Mycoplasma pneumonia	5	4	10	7	0.29
Chlamydial pneumonia (excluding psittacosis)					

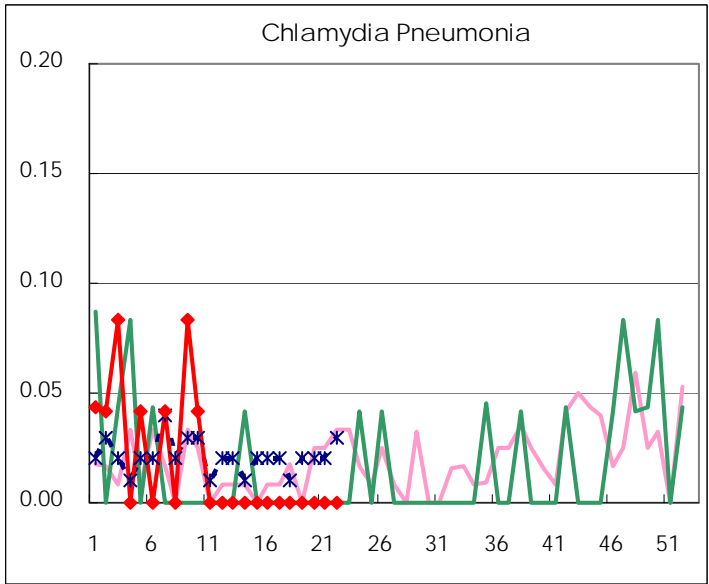
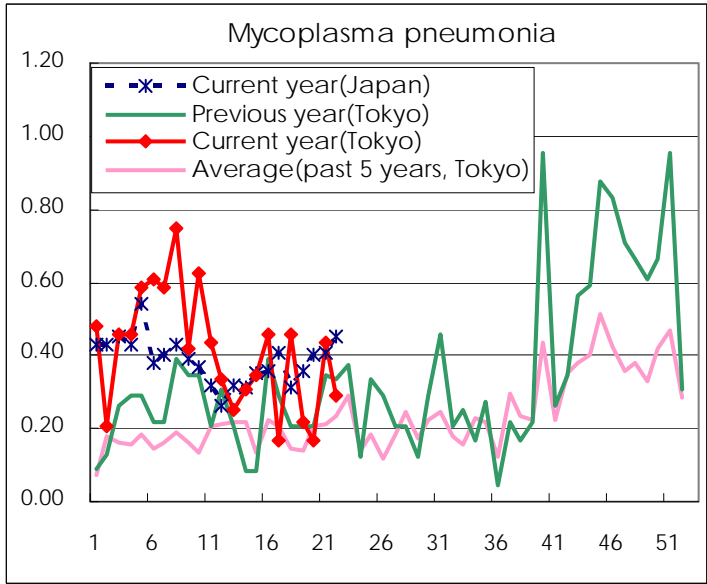
(Blank means 0.)

Disease Trend Graph (weekly reported cases per sentinel in comparison)









Number of sentinel facilities for weekly reporting		
Types of sentinels	Number of sentinels	Sentinels having reported
Pediatric	264	260
Influenza	419	415
Ophthalmic	39	38
Specially-designated	25	24

Tokyo Metropolitan Government
Infectious Disease Surveillance Center