
INFECTIOUS DISEASES WEEKLY REPORT

TOKYO IDWR

Tokyo Metropolitan Infectious Disease Surveillance Center

16 June 2011 / Number 23

Surveillance System in Tokyo, Japan

The infectious diseases which all physicians must report

All physicians must report to health centers the incidence of the diseases which are shown at page one. Health centers electronically report the individual cases to Tokyo Metropolitan Infectious Disease Surveillance Center.

The infectious diseases required to be reported by the sentinels

The numbers of patients who visit the sentinel clinics or hospitals during a week are reported to health centers in Tokyo. And they electronically report the numbers to Tokyo Metropolitan Infectious Disease Surveillance Center. We have about 500 sentinel clinics and hospitals in Tokyo.

1st Week is early January and 52nd Week is end of December.

Tokyo Metropolitan Institute of Public Health
Epidemiological Information Office

TEL:81-3-3363-3213 FAX:81-3-5332-7365
e-mail:idsc@tokyo-eiken.go.jp
URL:idsc.tokyo-eiken.go.jp/

Number of patients with the diseases which all physicians must report

Category	Diseases	Tokyo				Japan		
		20th	21st	22nd	23rd	Cum 2011	23rd	Cum 2011
I	Ebola hemorrhagic fever							
	Crimean-Congo hemorrhagic fever							
	Smallpox							
	South American hemorrhagic fever							
	Plague							
	Marburg disease							
	Lassa fever							
II	Acute poliomyelitis					1		1
	Tuberculosis	63	79	67	75	1,965	362	12,437
	Diphtheria							
	Severe Acute Respiratory Syndrome(SARS)							
	Avian influenza H5N1							
III	Cholera							2
	Shigellosis	2		1		22	3	85
	Enterohemorrhagic Escherichia coli infection	3		1		32	101	786
	Typhoid fever	1				2	1	8
	Paratyphoid fever	1				8		12
IV	Hepatitis E					6	1	31
	West Nile fever							
	Hepatitis A		1			16		125
	Echinococcosis					1		10
	Yellow fever							
	Psittacosis					1		8
	Omsk hemorrhagic fever							
	Relapsing fever							
	Kyasanur forest disease							
	Q fever							
	Rabies							
	Coccidioidomycosis					2		2
	Monkeypox							
	Hemorrhagic fever with renal syndrome							
	Western equine encephalitis							
	Tick-borne encephalitis							
	Anthrax							
	Chikungunya fever							5
	Scrub typhus(Tsutsugamushi disease)		1			8	10	114
	Dengue fever	1				12		40
	Eastern equine encephalitis							
	Avian influenza (excluding H5N1)							
	Nipah virus infection							
	Japanese spotted fever		1			1	5	18
	Japanese encephalitis						1	1
	Hantavirus pulmonary syndrome							
	Herpes B virus infection							
	Glanders							
	Brucellosis							
	Venezuelan equine encephalitis							
	Hendra virus infection							
Epidemic typhus								
Botulism							2	
Malaria		1			9	2	26	
Tularemia								
Lyme disease					2		2	
Lyssavirus infection(excluding rabies)								
Rift valley fever								
Melioidosis								
Legionellosis	1	2		3	24	11	239	
Leptospirosis					3		5	
Rocky mountain spotted fever								

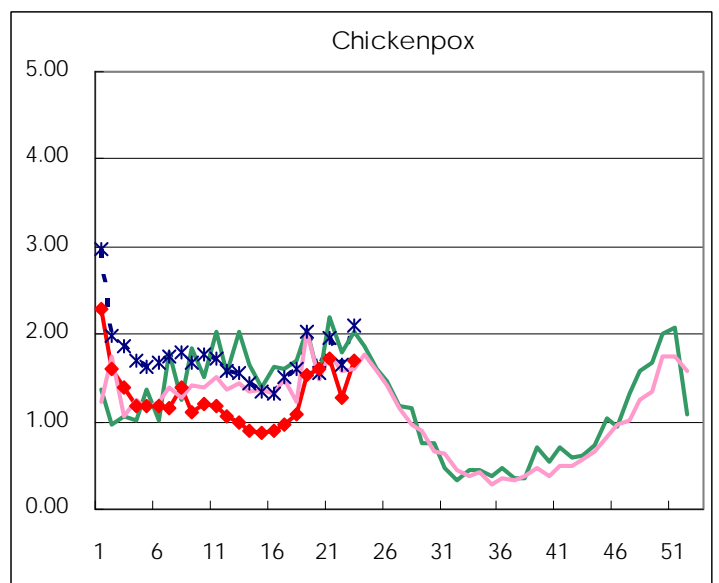
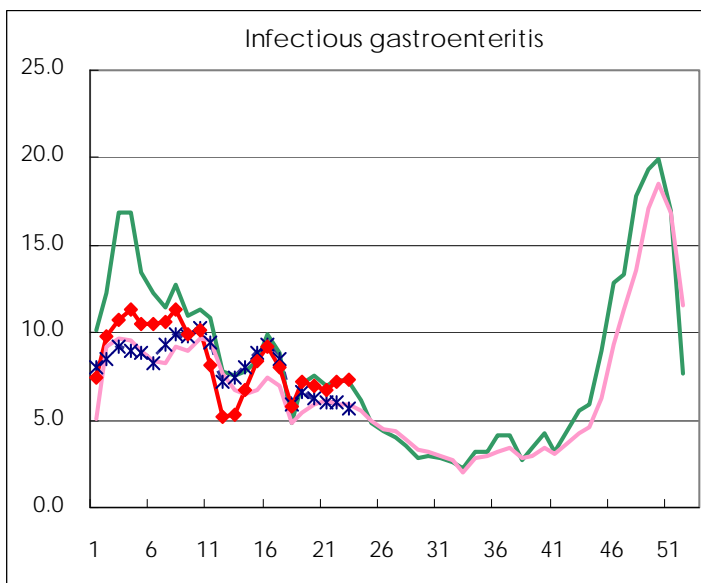
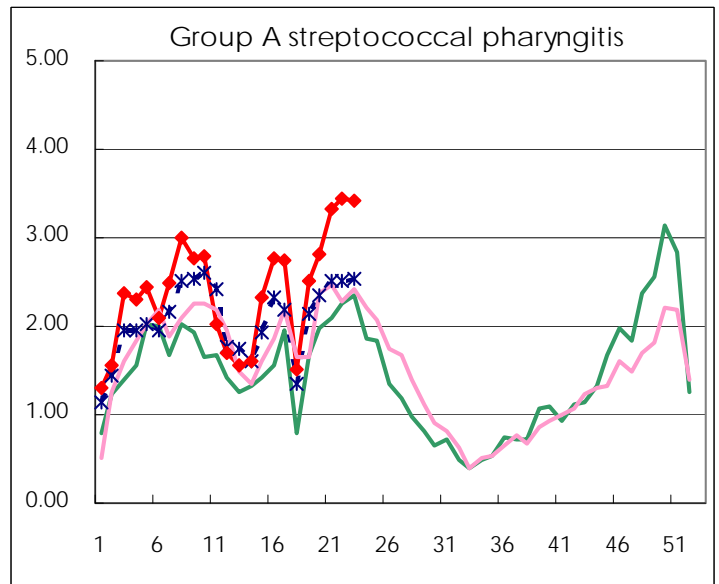
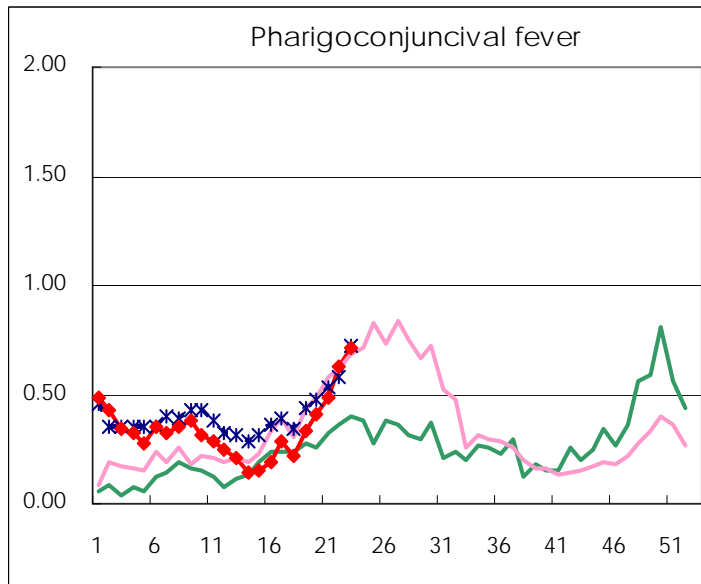
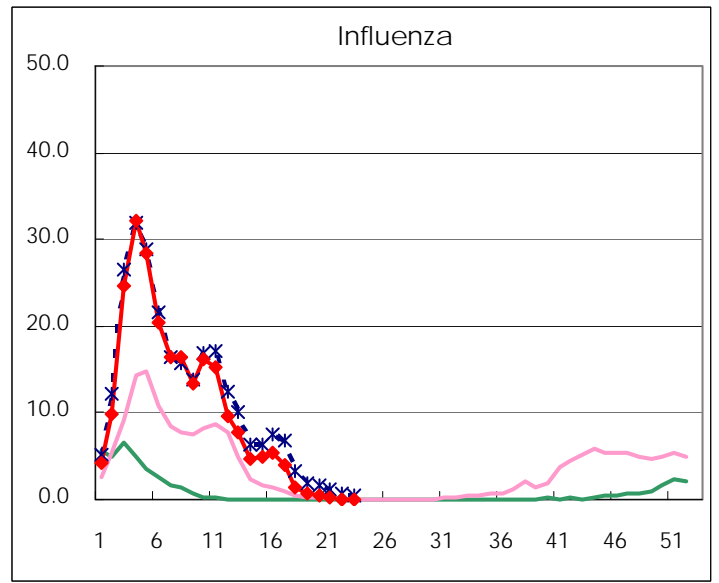
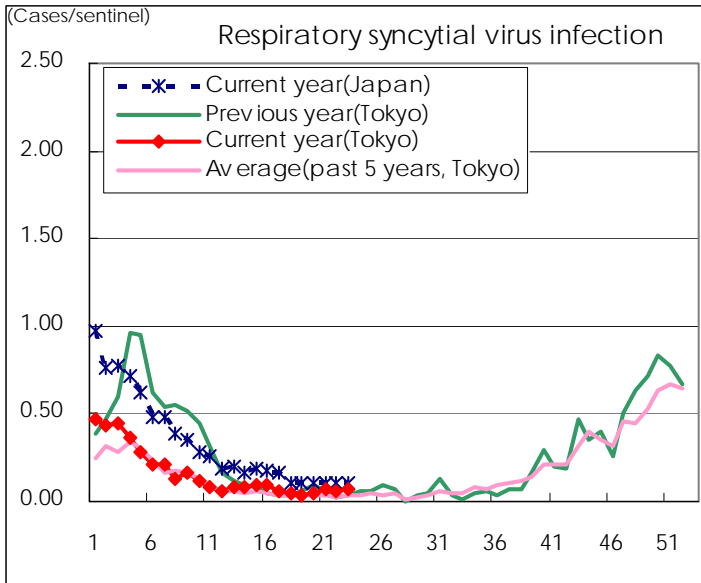
Category	Diseases	Tokyo				Japan		
		20th	21st	22nd	23rd	Cum 2011	23rd	Cum 2011
V	Amebiasis	4	1		2	68	5	326
	Viral hepatitis(excluding hepatitis A and E)	3		1	3	18	7	108
	Acute encephalitis(excluding JE and WNE)			1		8	2	151
	Cryptosporidiosis					2		4
	Creutzfeldt-Jakob disease	1				9	3	53
	Severe invasive streptococcal infections(TSLS)	2	1	1		19	3	104
	Acquired immunodeficiency syndrome (AIDS)	5	11	9	10	182	12	609
	Giardiasis					5	1	29
	Meningococcal meningitis				1	2	1	6
	Congenital rubella syndrome							1
	Syphilis	5	2	5	11	90	20	310
	Tetanus	1				3		43
	Vancomycin-resistant S. aureus infection							
	Vancomycin-resistant Enterococcus infection				1	1	1	25
	Rubella	1	3		1	14	12	190
	Measles	19	12	6	4	145	15	307

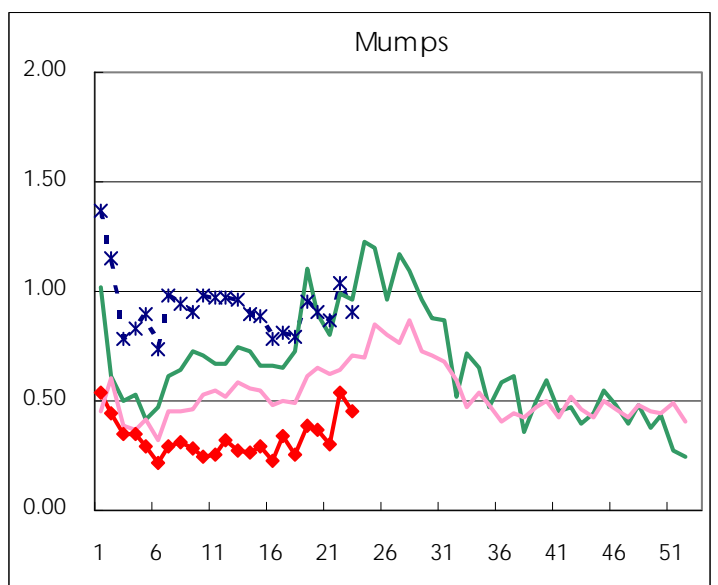
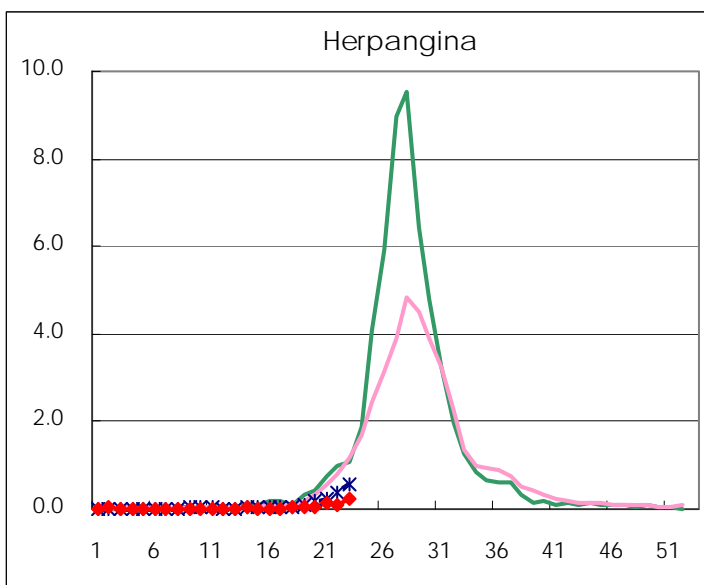
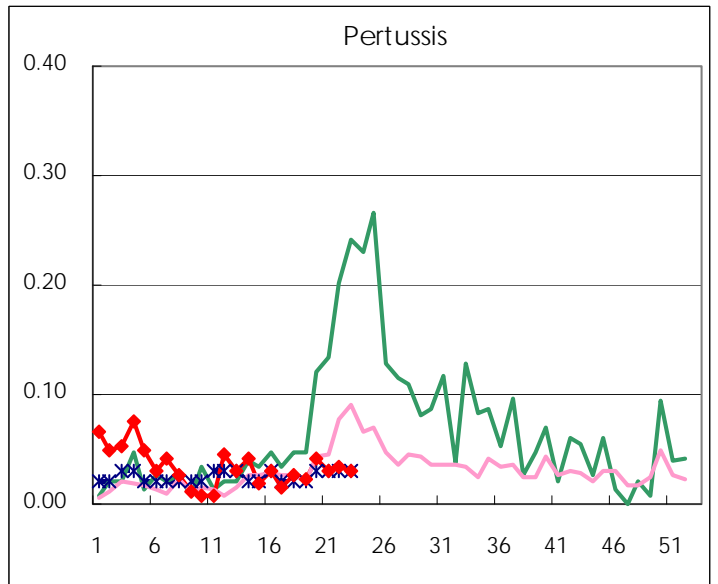
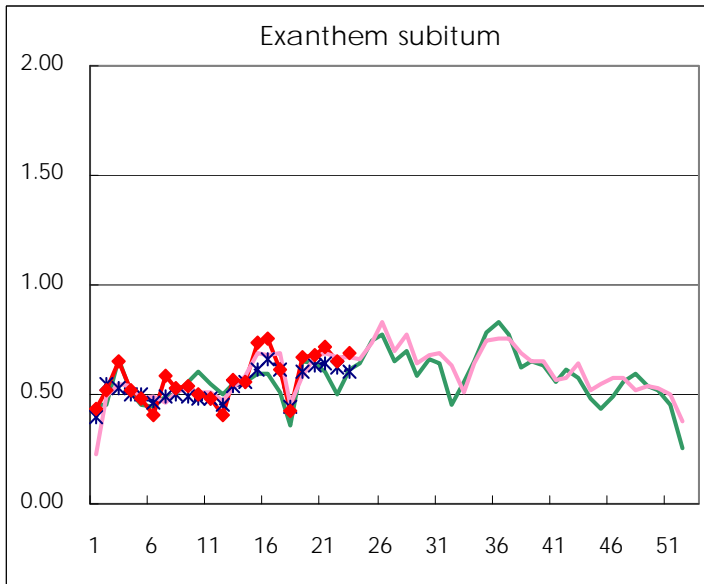
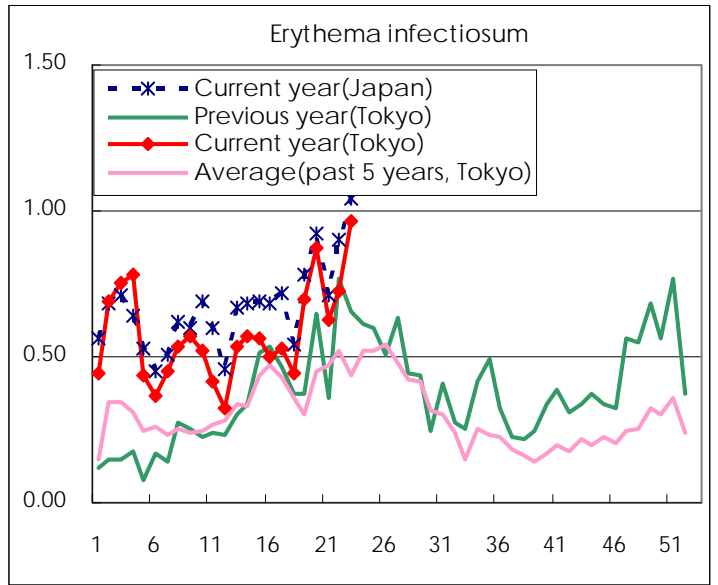
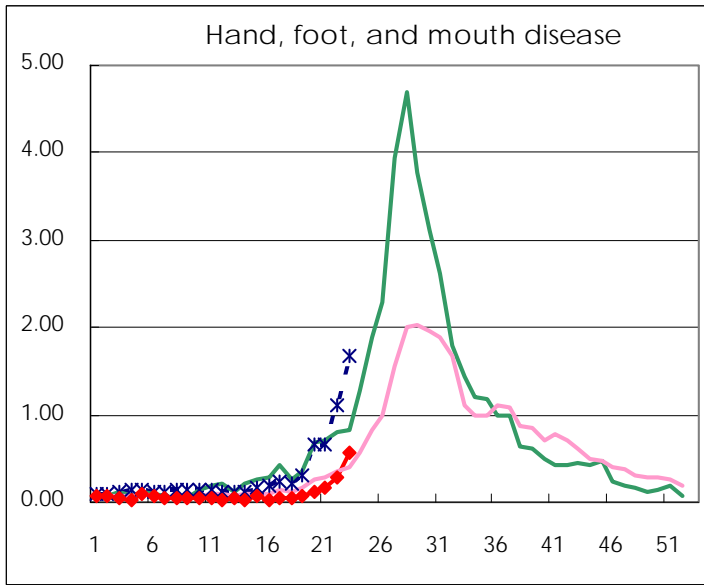
Number of patients with the diseases to be reported
by the designated clinics and hospitals

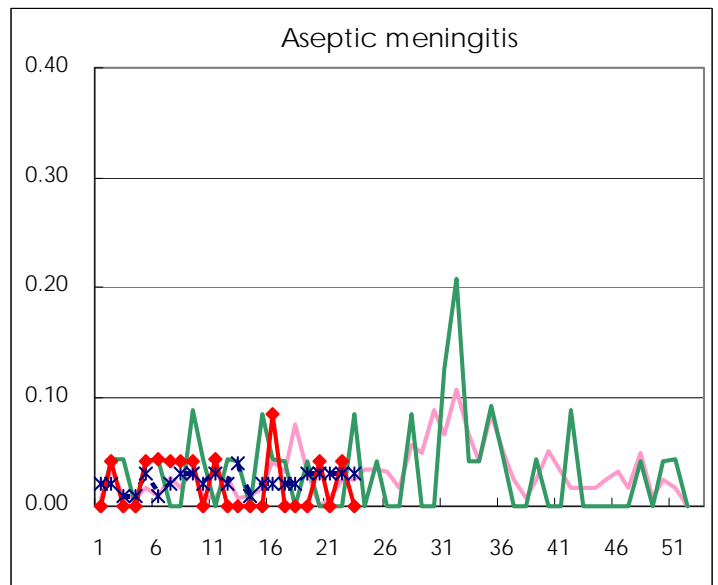
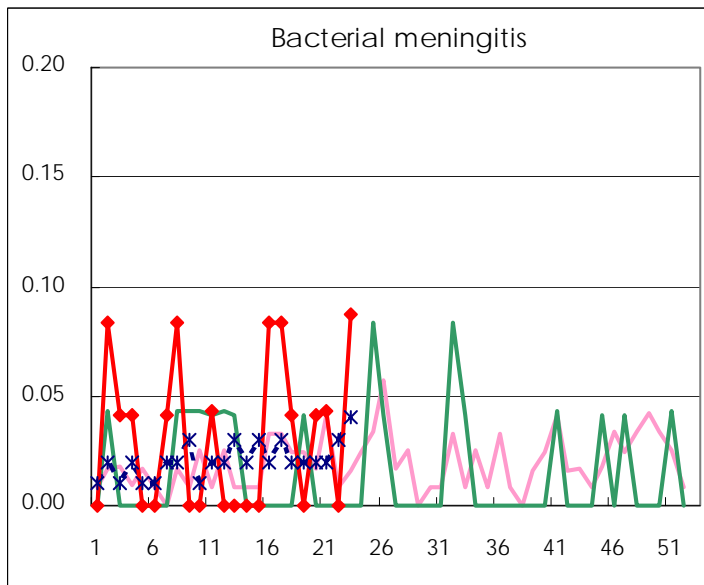
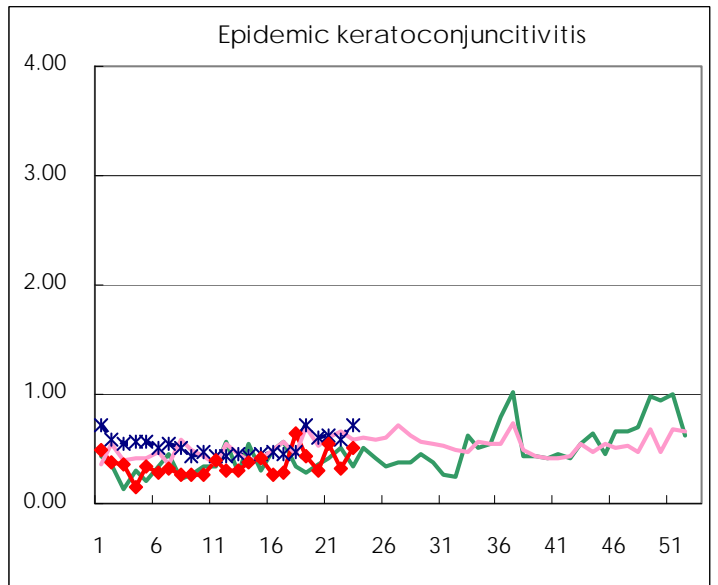
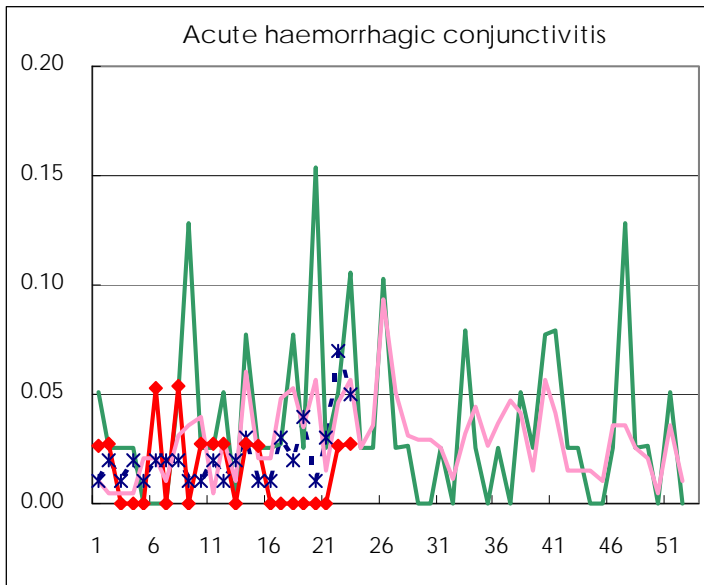
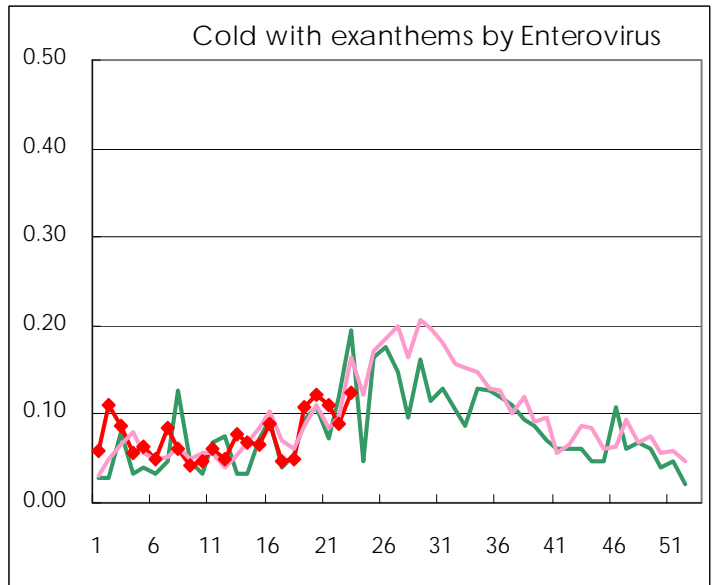
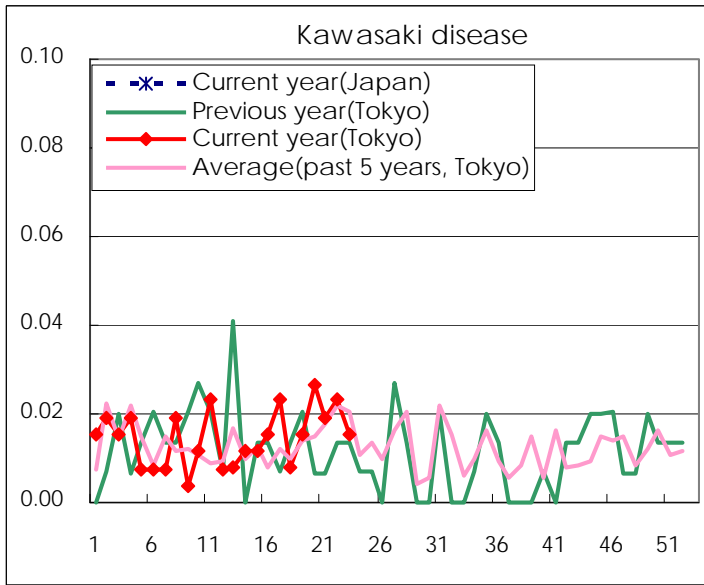
Diseases	2011				
	20th	21st	22nd	23rd	/sentinel
Respiratory syncytial virus infection	13	17	16	17	0.07
Pharyngoconjunctival fever	108	126	163	185	0.71
Group A streptococcal pharyngitis	741	868	896	886	3.42
Infectious gastroenteritis	1817	1,740	1,859	1,879	7.25
Chickenpox	422	452	334	442	1.71
Hand, foot, and mouth disease	32	41	71	144	0.56
Erythema infectiosum	230	164	189	249	0.96
Exanthem subitum	178	188	169	178	0.69
Pertussis	11	8	9	8	0.03
Herpangina	17	32	29	65	0.25
Mumps	96	78	141	117	0.45
Kawasaki disease	7	5	6	4	0.02
Cold with exanths by Enterovirus	32	29	23	32	0.12
Influenza	202	94	38	34	0.08
Acute hemorrhagic conjunctivitis			1	1	0.03
Epidemic keratoconjunctivitis	11	20	12	19	0.51
Bacterial meningitis	1	1		2	0.09
Aseptic meningitis	1		1		
Mycoplasma pneumonia	4	9	7	7	0.30
Chlamydial pneumonia (excluding psittacosis)		1			

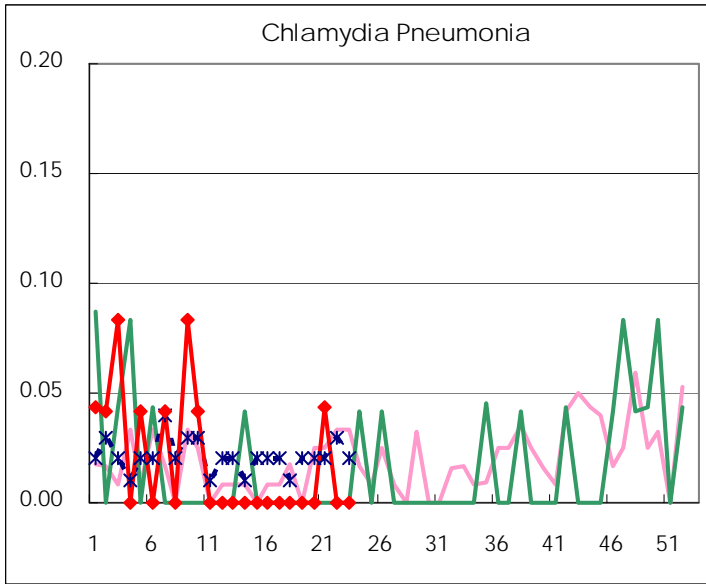
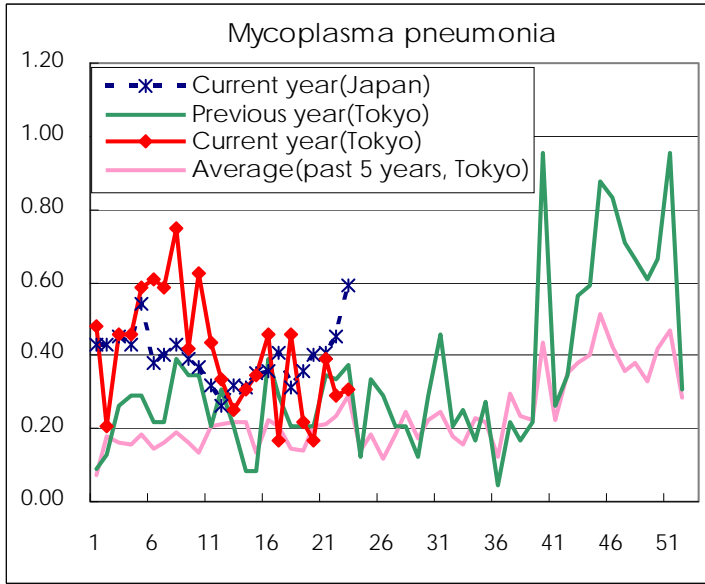
(Blank means 0.)

Disease Trend Graph (weekly reported cases per sentinel in comparison)









Number of sentinel facilities for weekly reporting		
Types of sentinels	Number of sentinels	Sentinels having reported
Pediatric	264	259
Influenza	419	414
Ophthalmic	39	37
Specially-designated	25	23

Tokyo Metropolitan Government
Infectious Disease Surveillance Center