
INFECTIOUS DISEASES WEEKLY REPORT

TOKYO IDWR

Tokyo Metropolitan Infectious Disease Surveillance Center

30 June 2011 / Number 25

Surveillance System in Tokyo, Japan

The infectious diseases which all physicians must report

All physicians must report to health centers the incidence of the diseases which are shown at page one. Health centers electronically report the individual cases to Tokyo Metropolitan Infectious Disease Surveillance Center.

The infectious diseases required to be reported by the sentinels

The numbers of patients who visit the sentinel clinics or hospitals during a week are reported to health centers in Tokyo. And they electronically report the numbers to Tokyo Metropolitan Infectious Disease Surveillance Center. We have about 500 sentinel clinics and hospitals in Tokyo.

1st Week is early January and 52nd Week is end of December.

Tokyo Metropolitan Institute of Public Health
Epidemiological Information Office

TEL:81-3-3363-3213 FAX:81-3-5332-7365

e-mail: idsc@tokyo-eiken.go.jp

URL: idsc.tokyo-eiken.go.jp/

Number of patients with the diseases which all physicians must report

Category	Diseases	Tokyo				Japan		
		22nd	23rd	24th	25th	Cum 2011	25th	Cum 2011
I	Ebola hemorrhagic fever							
	Crimean-Congo hemorrhagic fever							
	Smallpox							
	South American hemorrhagic fever							
	Plague							
	Marburg disease							
	Lassa fever							
II	Acute poliomyelitis					1		1
	Tuberculosis	75	86	61	48	2,140	345	13,655
	Diphtheria							
	Severe Acute Respiratory Syndrome(SARS)							
	Avian influenza H5N1							
III	Cholera							2
	Shigellosis	1		2	2	26	5	96
	Enterohemorrhagic Escherichia coli infection	1		6	4	44	83	1,087
	Typhoid fever					2		9
	Paratyphoid fever					8		13
IV	Hepatitis E					6	2	36
	West Nile fever							
	Hepatitis A			2	1	19	1	129
	Echinococcosis					1	1	11
	Yellow fever							
	Psittacosis					1		8
	Omsk hemorrhagic fever							
	Relapsing fever							
	Kyasanur forest disease							
	Q fever							
	Rabies							
	Coccidioidomycosis					2		2
	Monkeypox							
	Hemorrhagic fever with renal syndrome							
	Western equine encephalitis							
	Tick-borne encephalitis							
	Anthrax							
	Chikungunya fever							5
	Scrub typhus(Tsutsugamushi disease)					8	8	143
	Dengue fever					12	1	42
	Eastern equine encephalitis							
	Avian influenza (excluding H5N1)							
	Nipah virus infection							
	Japanese spotted fever					1		20
	Japanese encephalitis					1		1
	Hantavirus pulmonary syndrome							
	Herpes B virus infection							
	Glanders							
	Brucellosis							
	Venezuelan equine encephalitis							
	Hendra virus infection							
Epidemic typhus								
Botulism							3	
Malaria			2		11		31	
Tularemia								
Lyme disease					2		2	
Lyssavirus infection(excluding rabies)								
Rift valley fever								
Melioidosis								
Legionellosis		3		1	25	12	279	
Leptospirosis					3		5	
Rocky mountain spotted fever								

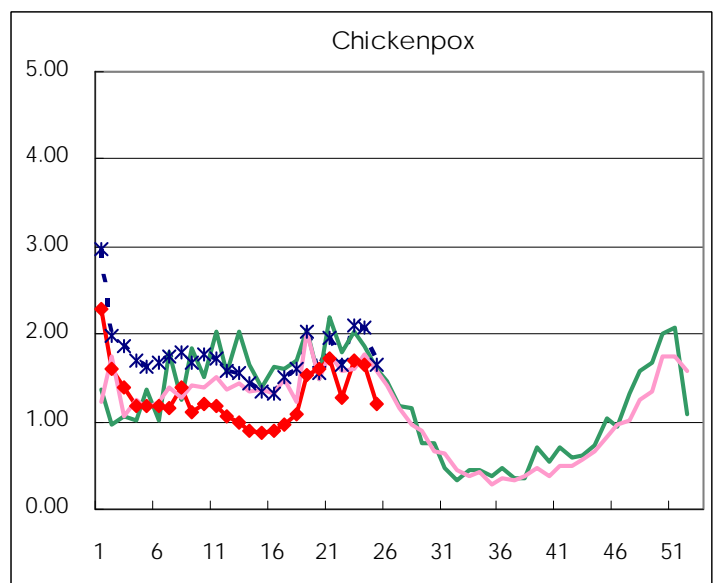
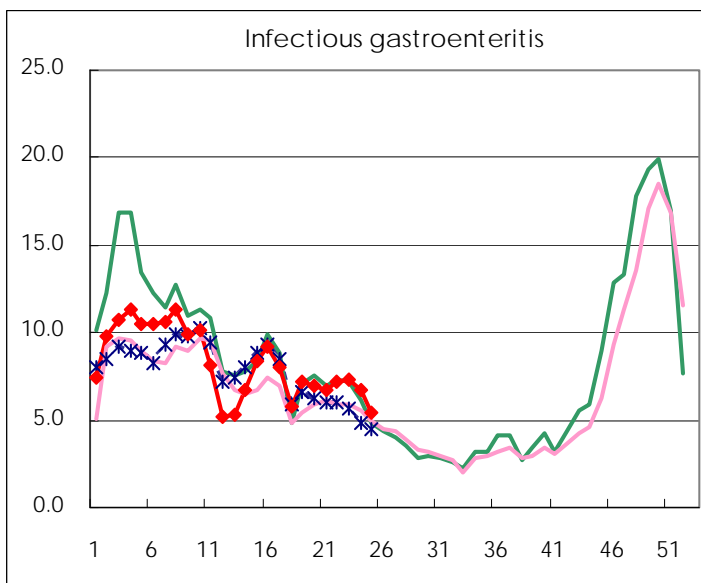
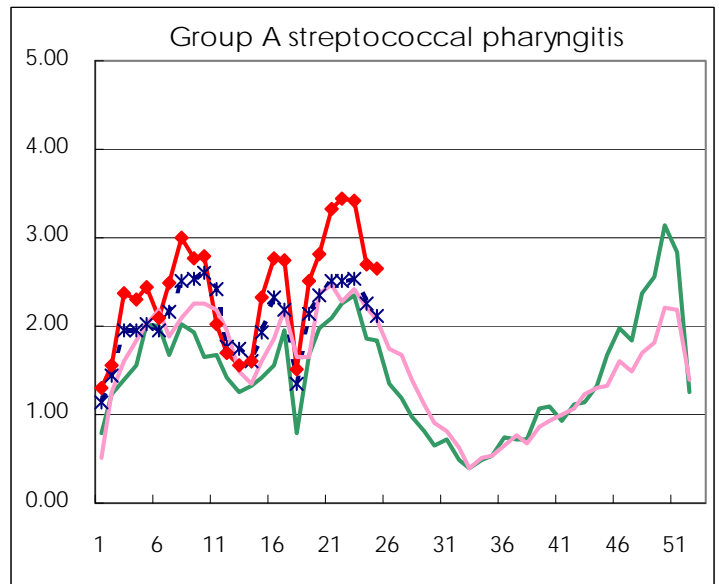
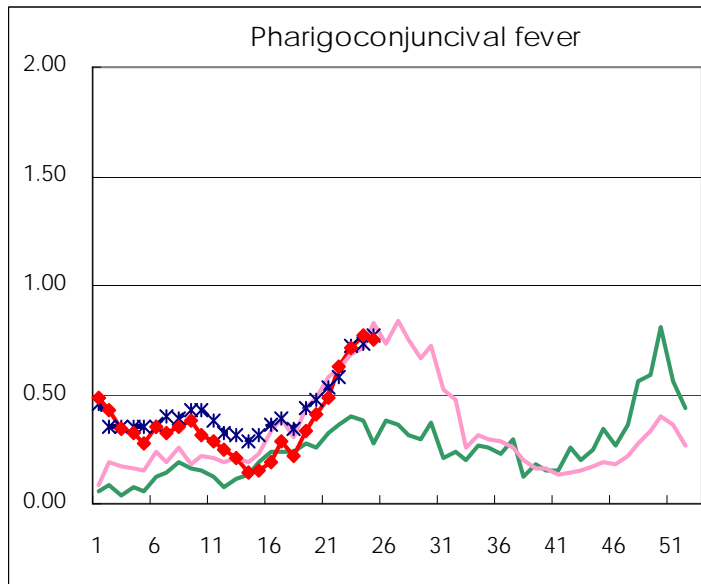
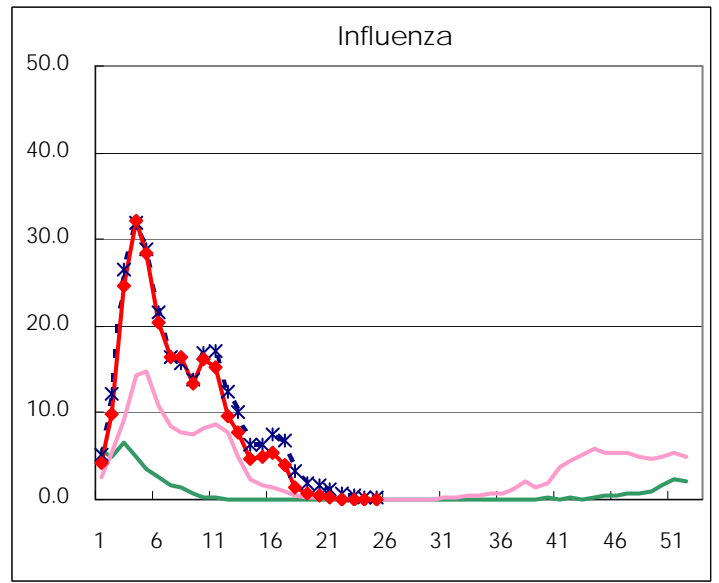
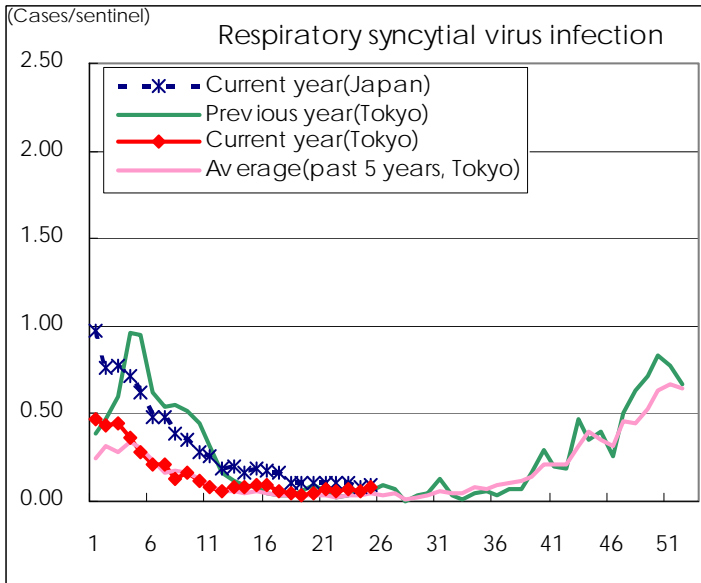
Category	Diseases	Tokyo				Japan		
		22nd	23rd	24th	25th	Cum 2011	25th	Cum 2011
V	Amebiasis		2	6	5	79	6	361
	Viral hepatitis(excluding hepatitis A and E)	1	3	2	1	21	2	122
	Acute encephalitis(excluding JE and WNE)	1			1	9	4	160
	Cryptosporidiosis					2		5
	Creutzfeldt-Jakob disease					9	2	59
	Severe invasive streptococcal infections(TSLS)	1		1		20	3	117
	Acquired immunodeficiency syndrome (AIDS)	9	10	6	8	196	20	664
	Giardiasis					5	1	32
	Meningococcal meningitis		1			2		6
	Congenital rubella syndrome							1
	Syphilis	5	11	4	6	100	10	342
	Tetanus			1		4	1	50
	Vancomycin-resistant S. aureus infection							
	Vancomycin-resistant Enterococcus infection		1			1		26
	Rubella		1	1	2	17	11	218
	Measles	6	4	4		149	12	331

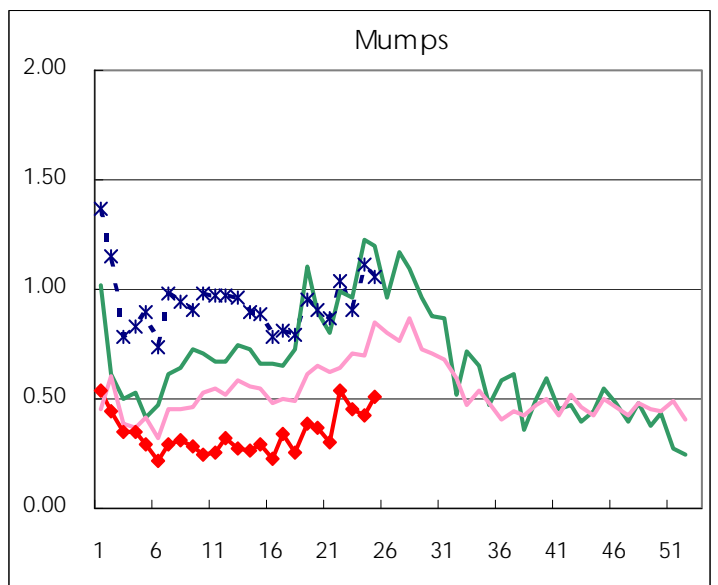
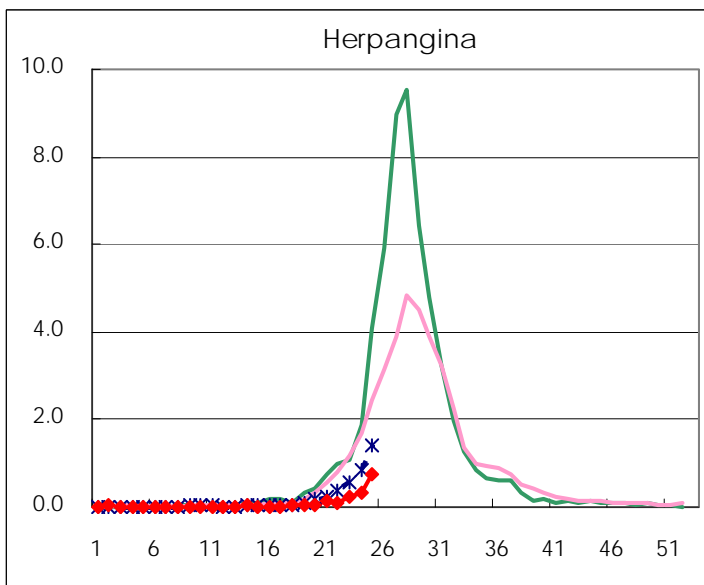
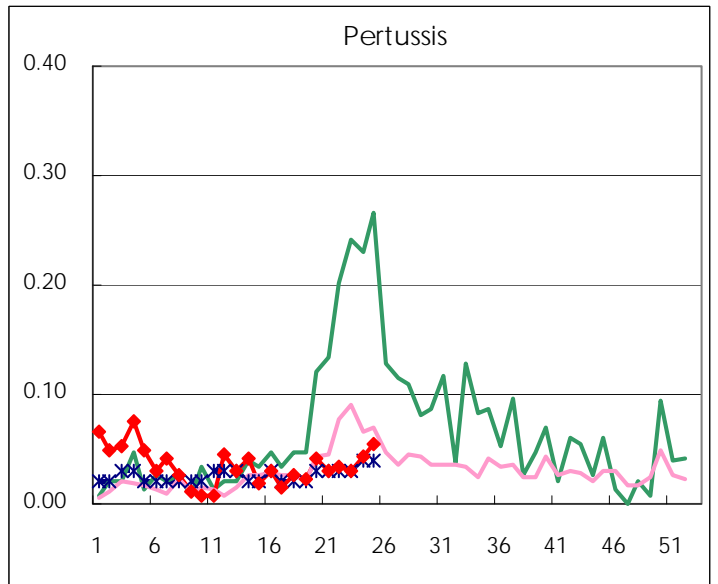
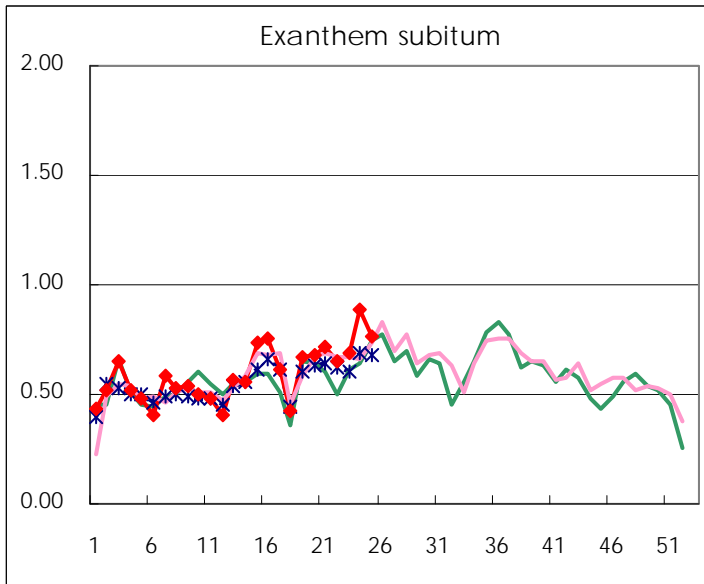
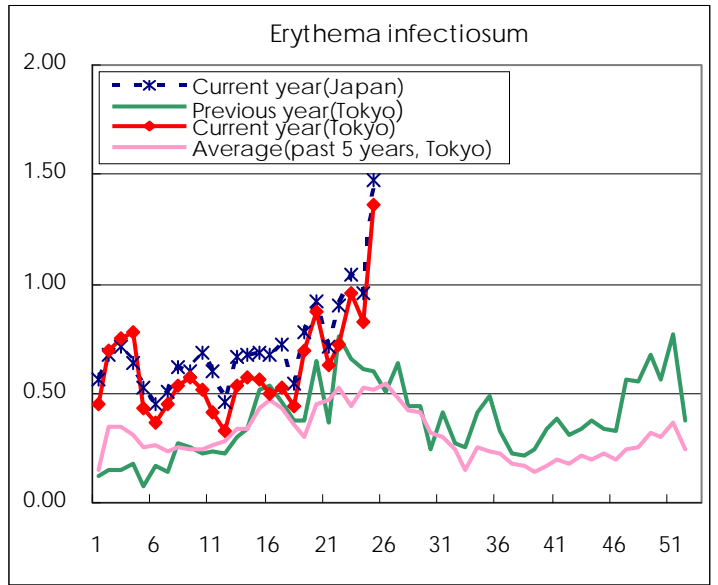
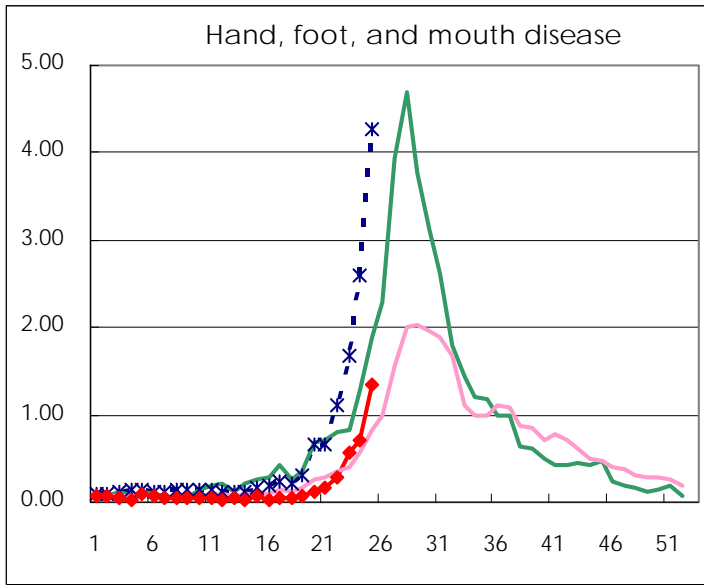
Number of patients with the diseases to be reported
by the designated clinics and hospitals

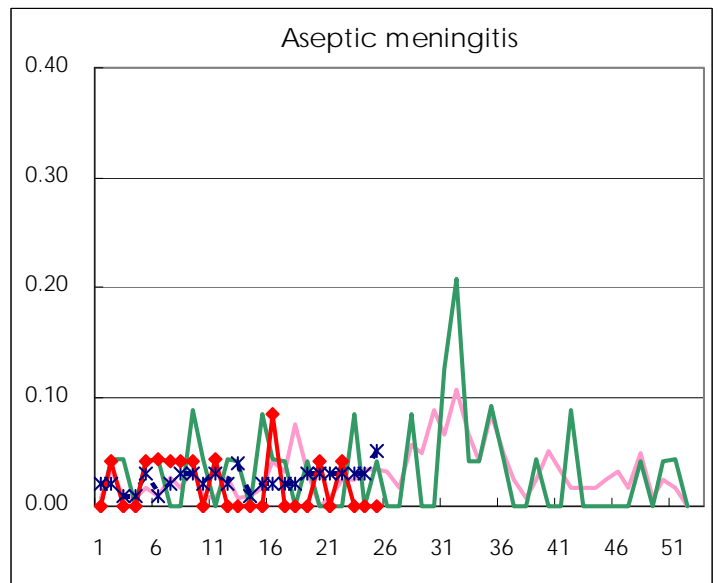
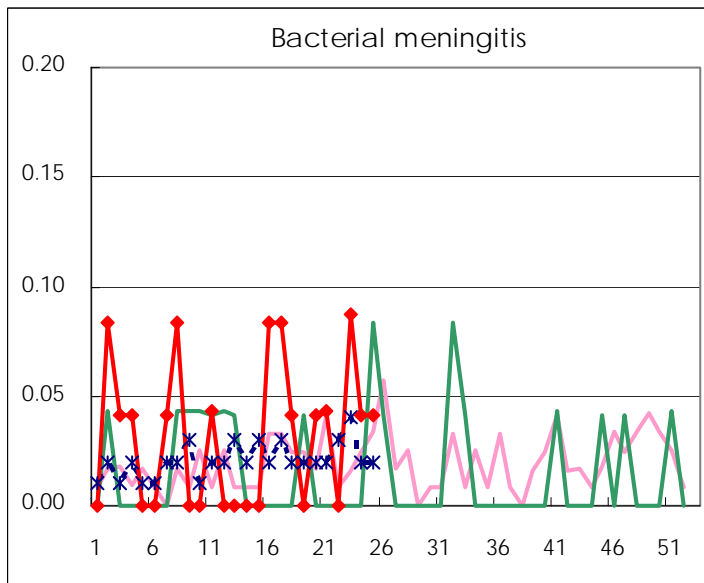
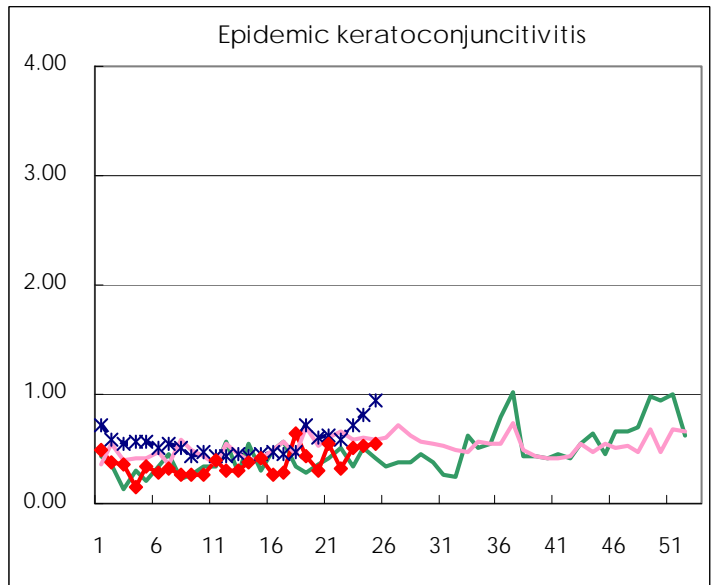
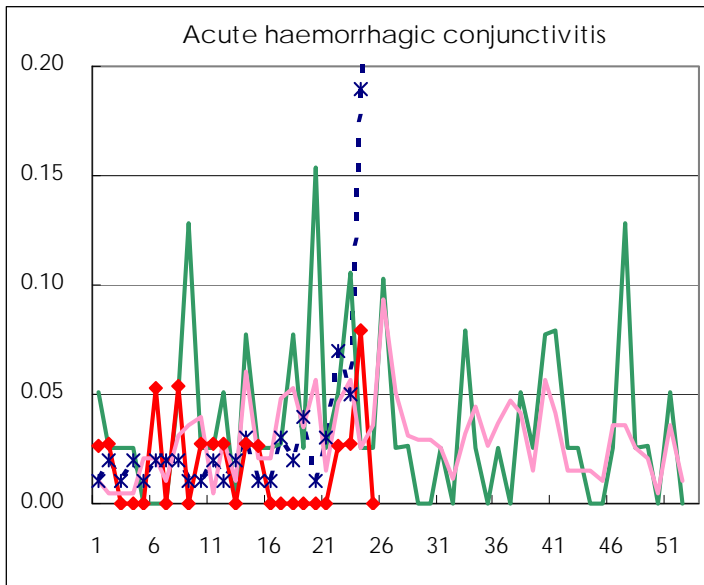
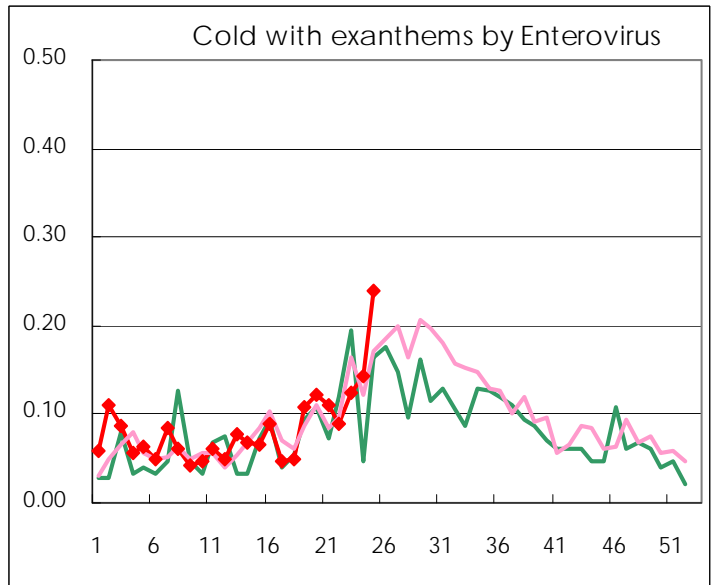
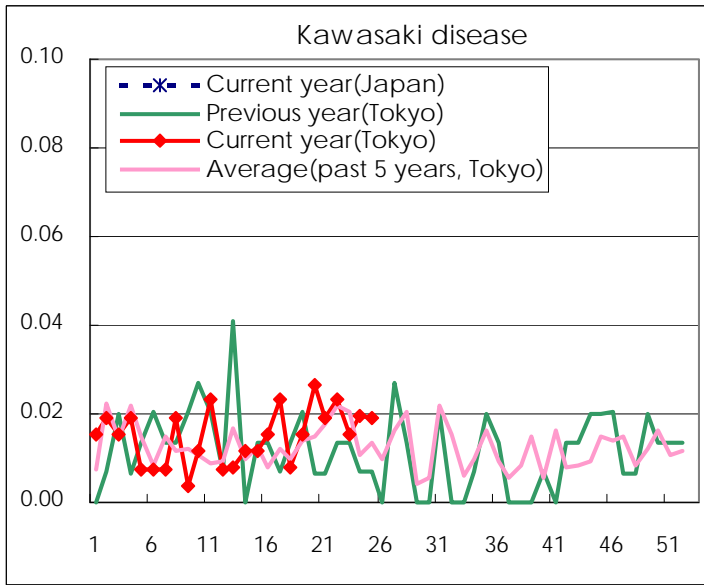
Diseases	2011				
	22nd	23rd	24th	25th	/sentinel
Respiratory syncytial virus infection	16	17	15	20	0.08
Pharyngoconjunctival fever	163	185	200	196	0.75
Group A streptococcal pharyngitis	896	886	699	688	2.65
Infectious gastroenteritis	1859	1,879	1,736	1,401	5.39
Chickenpox	334	442	426	314	1.21
Hand, foot, and mouth disease	71	144	185	349	1.34
Erythema infectiosum	189	249	214	355	1.37
Exanthem subitum	169	178	230	198	0.76
Pertussis	9	8	11	14	0.05
Herpangina	29	65	88	194	0.75
Mumps	141	117	110	133	0.51
Kawasaki disease	6	4	5	5	0.02
Cold with exanthems by Enterovirus	23	32	37	62	0.24
Influenza	38	34	11	11	0.03
Acute hemorrhagic conjunctivitis	1	1	3		
Epidemic keratoconjunctivitis	12	19	20	20	0.54
Bacterial meningitis		2	1	1	0.04
Aseptic meningitis	1				
Mycoplasma pneumonia	7	7	10	13	0.54
Chlamydial pneumonia (excluding psittacosis)			1		

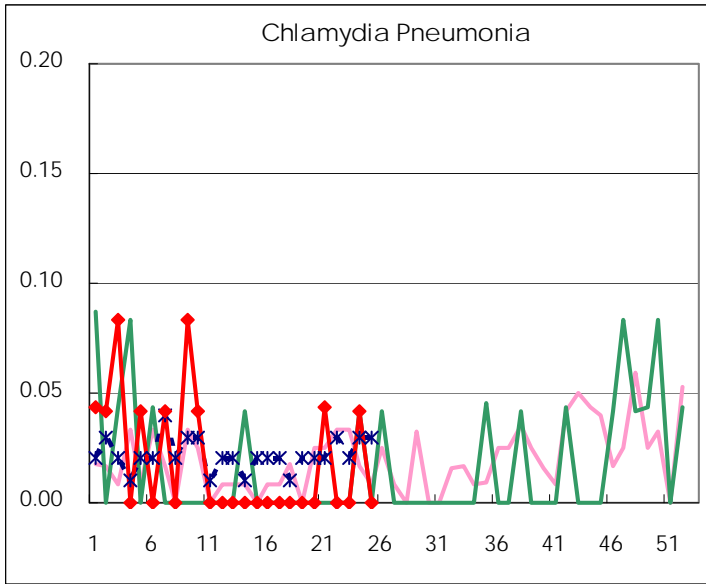
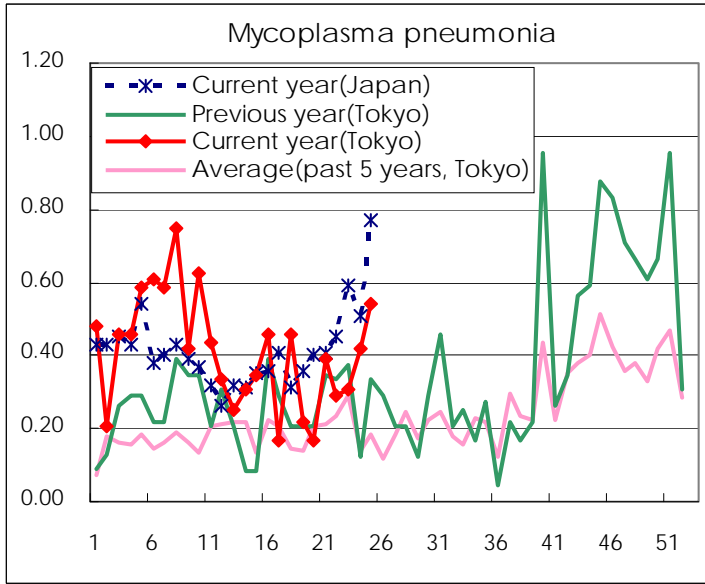
(Blank means 0.)

Disease Trend Graph (weekly reported cases per sentinel in comparison)









Number of sentinel facilities for weekly reporting		
Types of sentinels	Number of sentinels	Sentinels having reported
Pediatric	264	260
Influenza	419	414
Ophthalmic	39	37
Specially-designated	25	24

Tokyo Metropolitan Government
Infectious Disease Surveillance Center