
INFECTIOUS DISEASES WEEKLY REPORT

TOKYO IDWR

Tokyo Metropolitan Infectious Disease Surveillance Center

7 July 2011 / Number 26

Surveillance System in Tokyo, Japan

The infectious diseases which all physicians must report

All physicians must report to health centers the incidence of the diseases which are shown at page one. Health centers electronically report the individual cases to Tokyo Metropolitan Infectious Disease Surveillance Center.

The infectious diseases required to be reported by the sentinels

The numbers of patients who visit the sentinel clinics or hospitals during a week are reported to health centers in Tokyo. And they electronically report the numbers to Tokyo Metropolitan Infectious Disease Surveillance Center. We have about 500 sentinel clinics and hospitals in Tokyo.

1st Week is early January and 52nd Week is end of December.

Tokyo Metropolitan Institute of Public Health
Epidemiological Information Office

TEL:81-3-3363-3213 FAX:81-3-5332-7365

e-mail:idsc@tokyo-eiken.go.jp

URL:idsc.tokyo-eiken.go.jp/

Number of patients with the diseases which all physicians must report

Category	Diseases	Tokyo				Japan		
		23rd	24th	25th	26th	Cum 2011	26th	Cum 2011
I	Ebola hemorrhagic fever							
	Crimean-Congo hemorrhagic fever							
	Smallpox							
	South American hemorrhagic fever							
	Plague							
	Marburg disease							
	Lassa fever							
II	Acute poliomyelitis					1		1
	Tuberculosis	89	69	74	70	2,278	379	14,348
	Diphtheria							
	Severe Acute Respiratory Syndrome(SARS)							
	Avian influenza H5N1							
III	Cholera							2
	Shigellosis		2	2		26	3	99
	Enterohemorrhagic Escherichia coli infection		6	4	12	56	63	1,173
	Typhoid fever					2	1	10
	Paratyphoid fever					8		13
IV	Hepatitis E					6	1	36
	West Nile fever							
	Hepatitis A		2	1		19	1	131
	Echinococcosis					1		11
	Yellow fever							
	Psittacosis					1		8
	Omsk hemorrhagic fever							
	Relapsing fever							
	Kyasanur forest disease							
	Q fever							
	Rabies							
	Coccidioidomycosis					2		2
	Monkeypox							
	Hemorrhagic fever with renal syndrome							
	Western equine encephalitis							
	Tick-borne encephalitis							
	Anthrax							
	Chikungunya fever							5
	Scrub typhus(Tsutsugamushi disease)					8	4	151
	Dengue fever					12		42
	Eastern equine encephalitis							
	Avian influenza (excluding H5N1)							
	Nipah virus infection							
	Japanese spotted fever					1	8	29
	Japanese encephalitis					1		1
	Hantavirus pulmonary syndrome							
	Herpes B virus infection							
	Glanders							
	Brucellosis							
	Venezuelan equine encephalitis							
	Hendra virus infection							
Epidemic typhus								
Botulism							3	
Malaria		2				11	30	
Tularemia								
Lyme disease						2	2	
Lyssavirus infection(excluding rabies)								
Rift valley fever								
Melioidosis								
Legionellosis	3		1	2	27	20	310	
Leptospirosis					3		5	
Rocky mountain spotted fever								

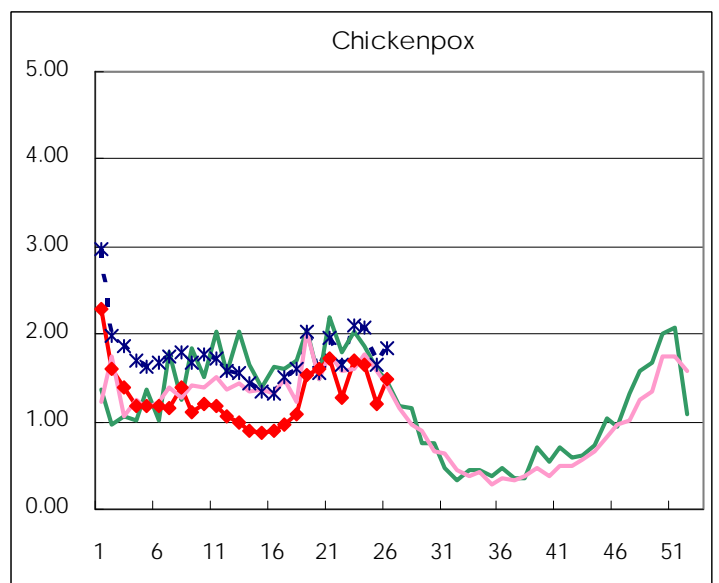
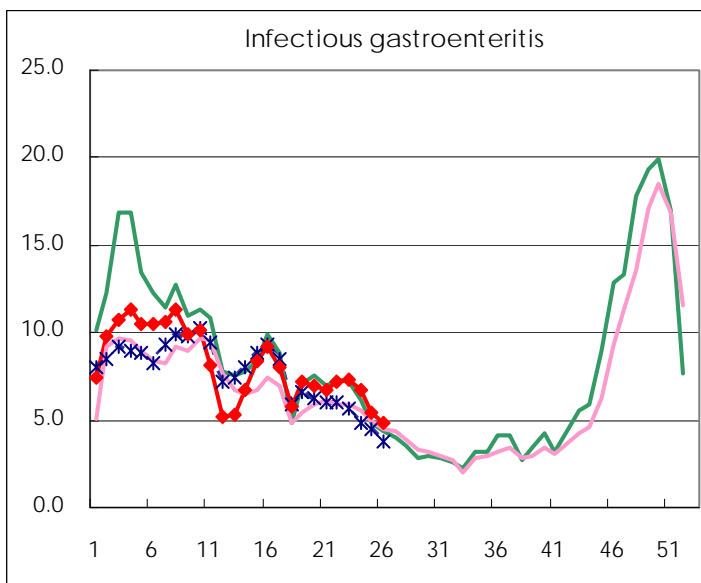
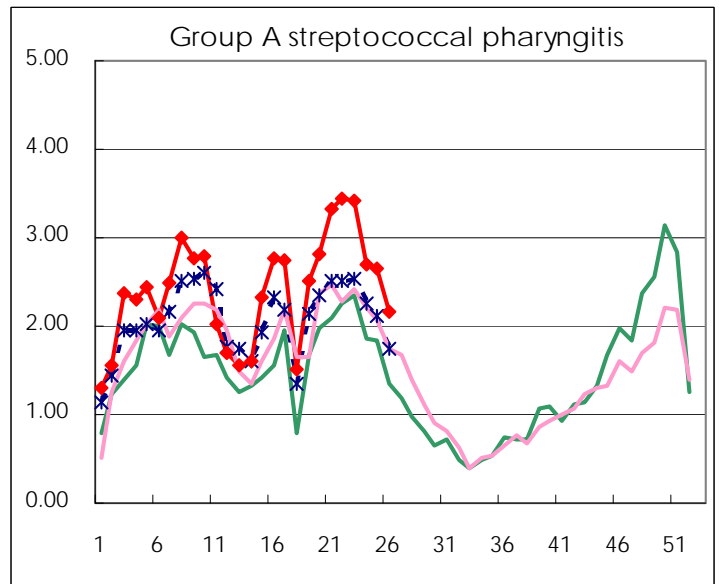
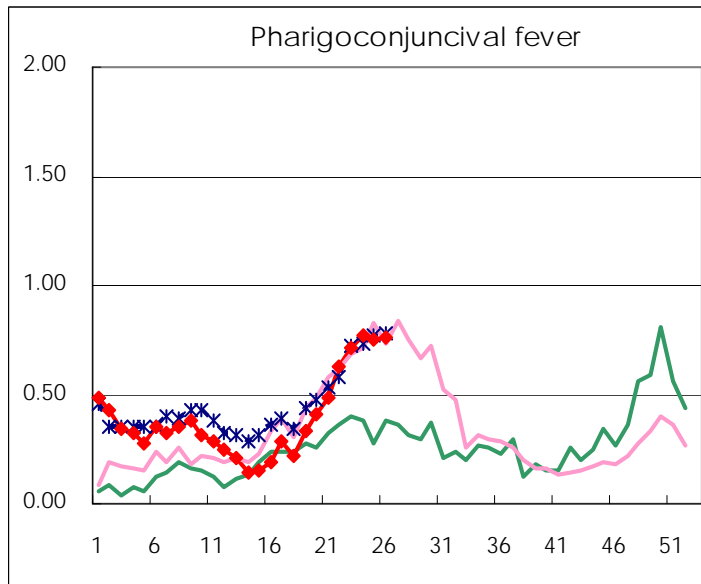
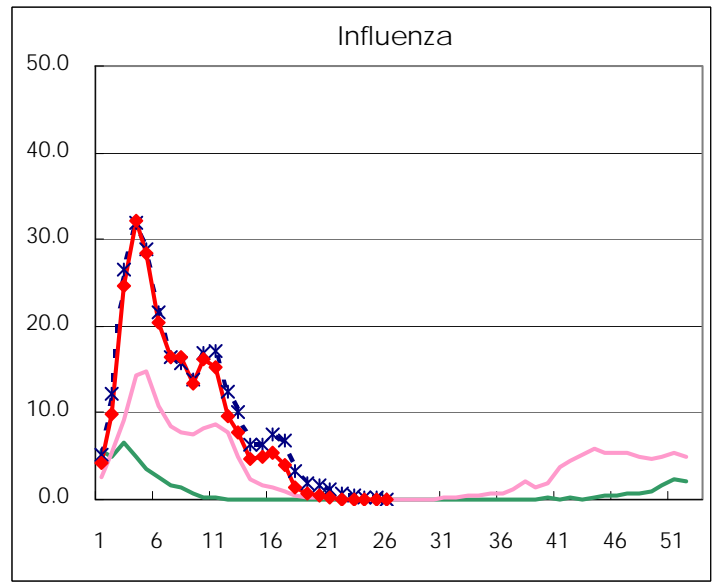
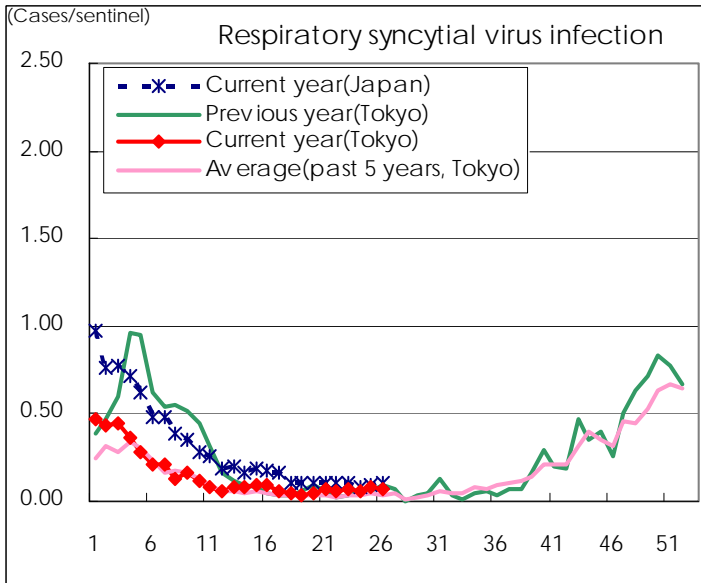
Category	Diseases	Tokyo				Japan		
		23rd	24th	25th	26th	Cum 2011	26th	Cum 2011
V	Amebiasis	2	6	5	1	80	8	376
	Viral hepatitis(excluding hepatitis A and E)	3	2	1	2	23	4	127
	Acute encephalitis(excluding JE and WNE)			1		9	1	163
	Cryptosporidiosis					2		5
	Creutzfeldt-Jakob disease					9	1	59
	Severe invasive streptococcal infections(TSLS)		1			20	4	124
	Acquired immunodeficiency syndrome (AIDS)	10	6	8	4	200	13	691
	Giardiasis				1	6	1	34
	Meningococcal meningitis	1				2	1	7
	Congenital rubella syndrome							1
	Syphilis	11	4	6	3	103	9	359
	Tetanus		1		1	5	1	52
	Vancomycin-resistant S. aureus infection							
	Vancomycin-resistant Enterococcus infection	1				1		27
	Rubella	1	1	2	1	18	6	231
	Measles	4	4		2	151	13	348

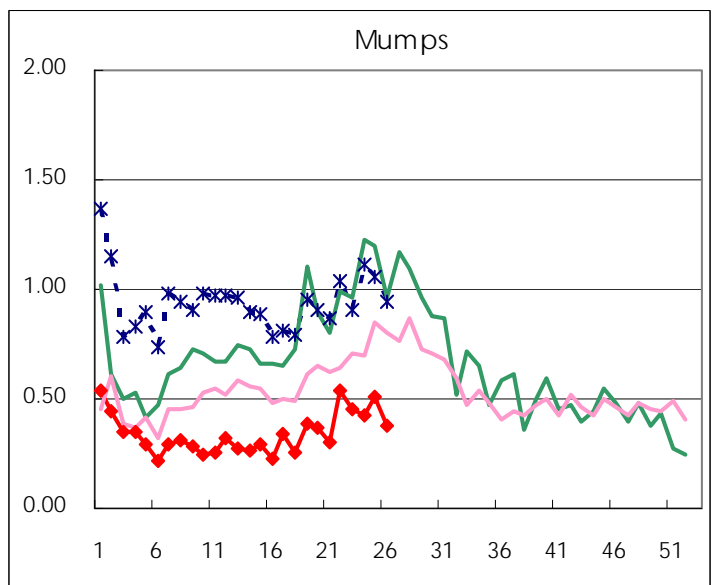
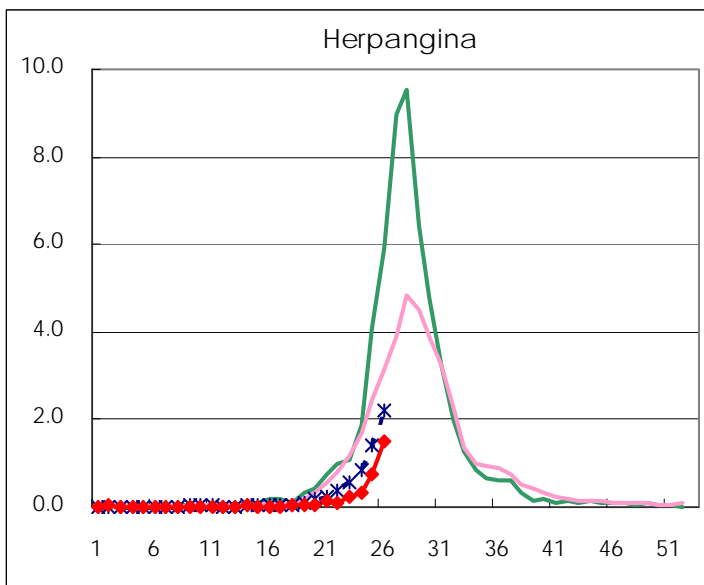
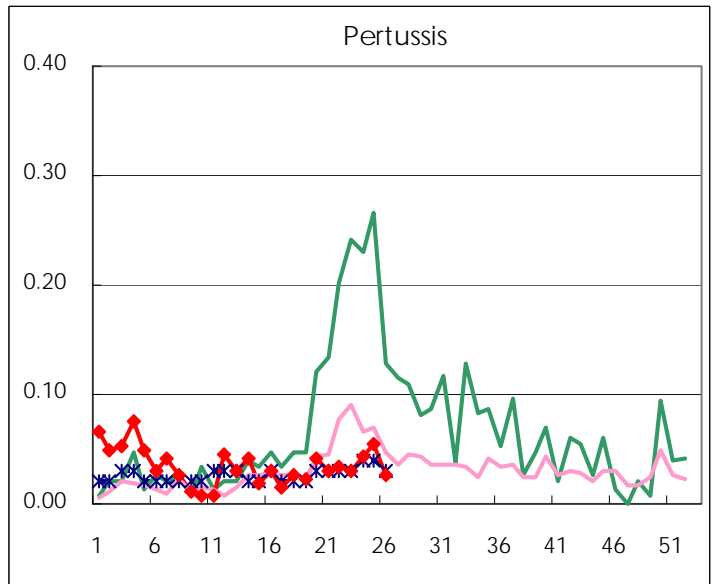
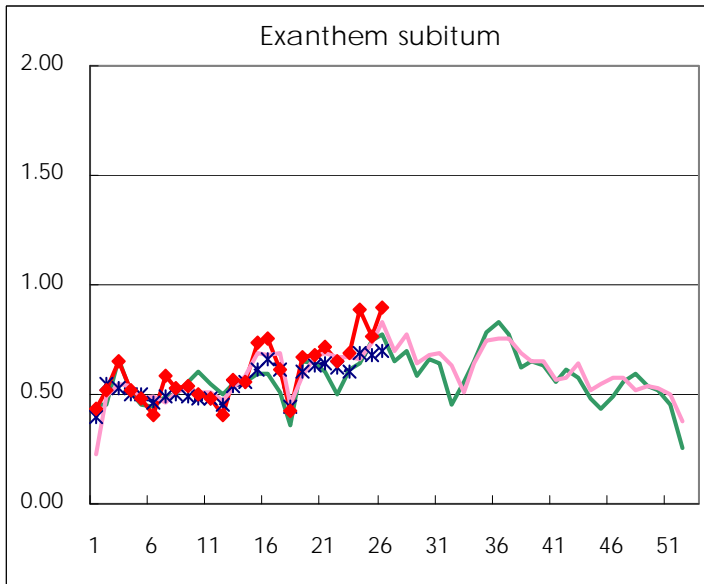
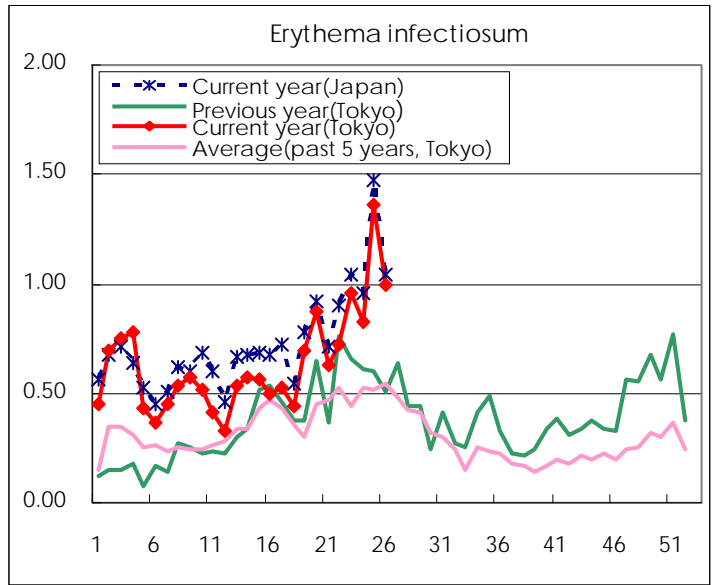
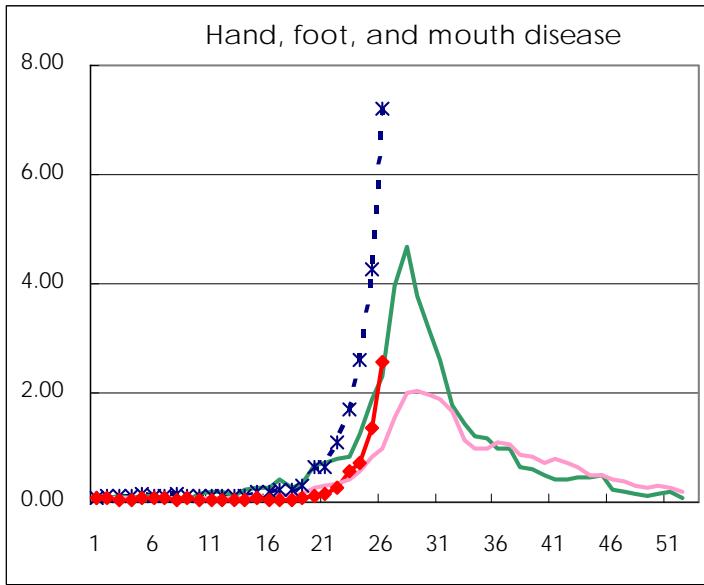
Number of patients with the diseases to be reported
by the designated clinics and hospitals

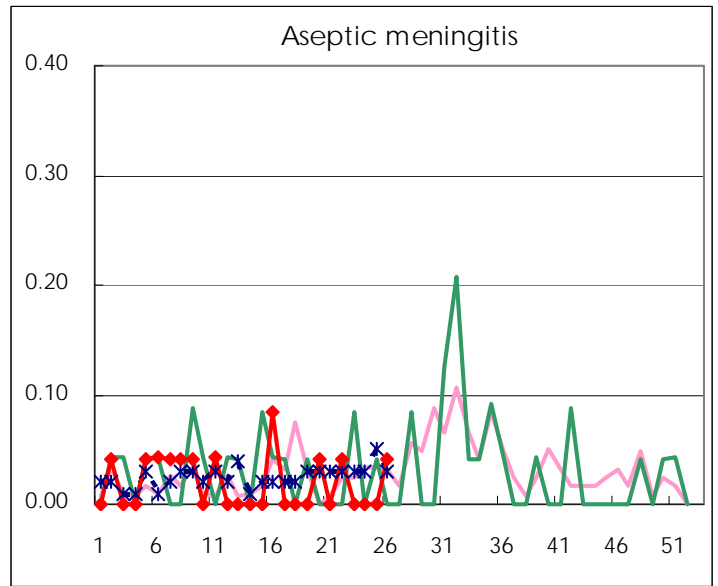
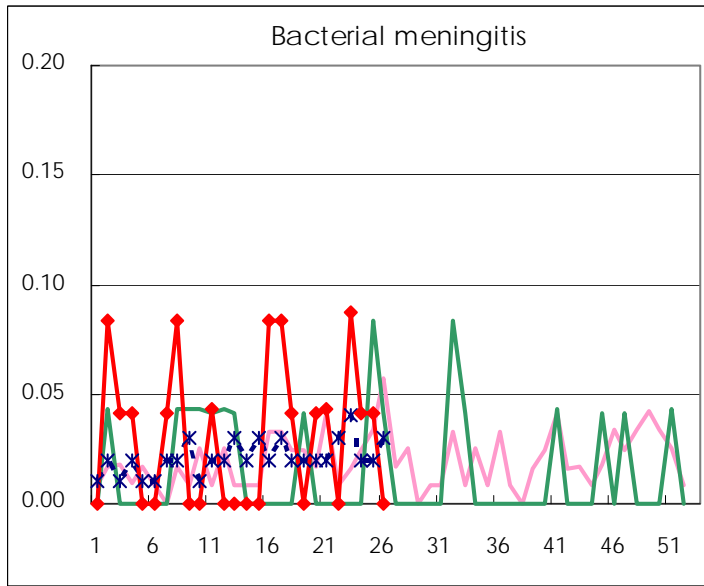
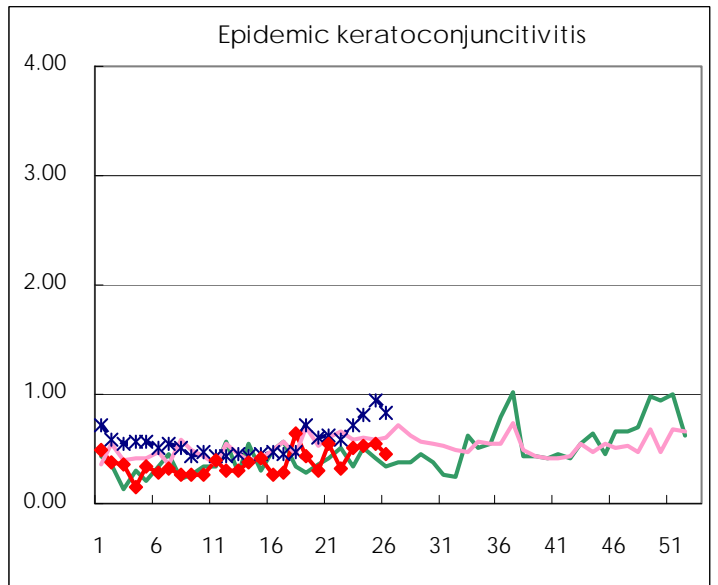
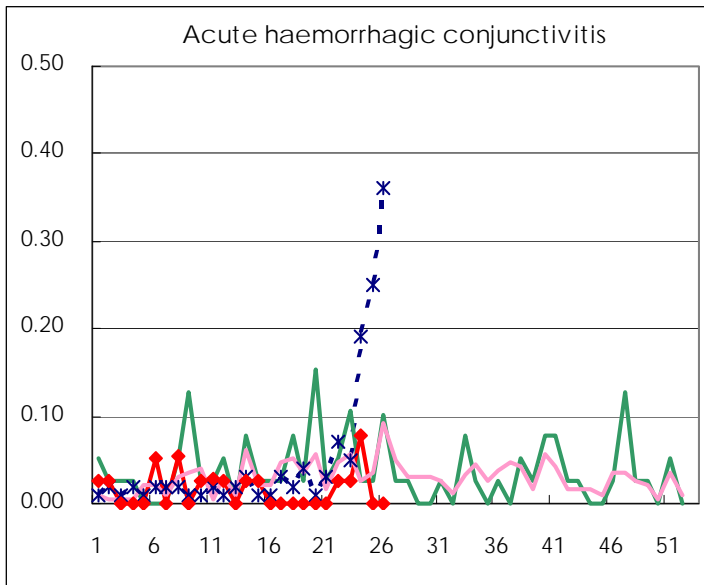
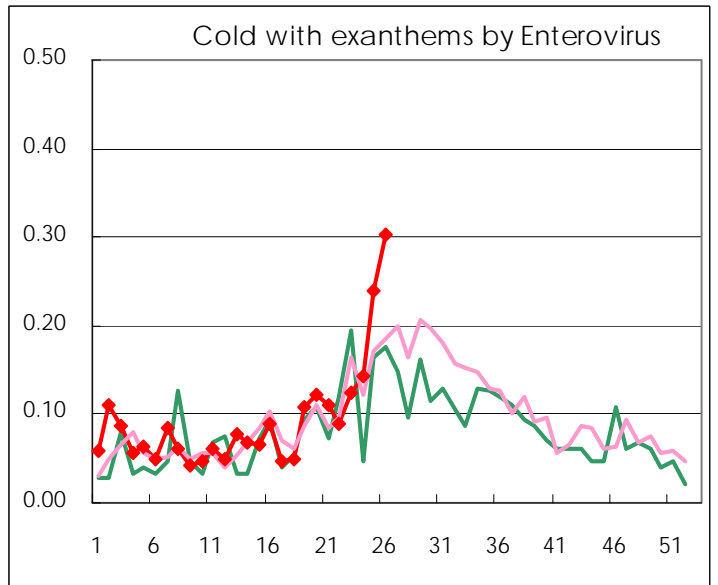
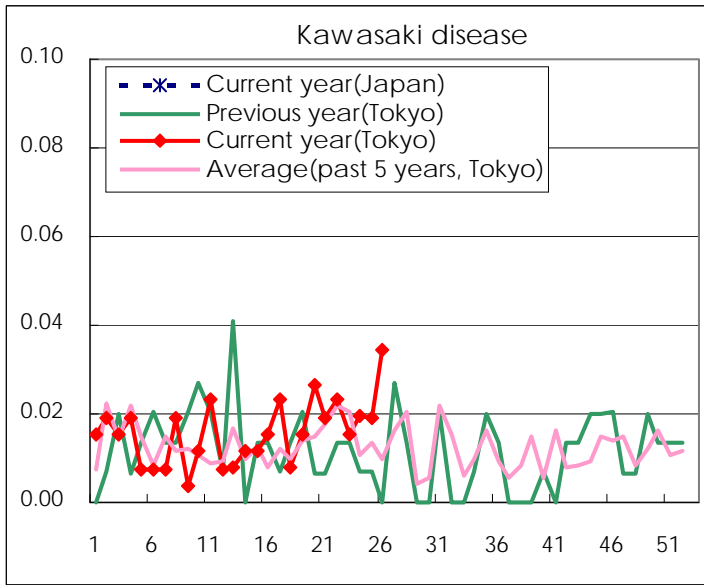
Diseases	2011				
	23rd	24th	25th	26th	/sentinel
Respiratory syncytial virus infection	17	15	20	19	0.07
Pharyngoconjunctival fever	185	200	196	197	0.76
Group A streptococcal pharyngitis	886	699	688	562	2.16
Infectious gastroenteritis	1879	1,736	1,401	1,248	4.80
Chickenpox	442	426	315	384	1.48
Hand, foot, and mouth disease	144	185	349	663	2.55
Erythema infectiosum	249	214	355	260	1.00
Exanthem subitum	178	230	198	232	0.89
Pertussis	8	11	14	7	0.03
Herpangina	65	88	194	387	1.49
Mumps	117	110	133	98	0.38
Kawasaki disease	4	5	5	9	0.03
Cold with exanthems by Enterovirus	32	37	62	79	0.30
Influenza	34	11	11	9	0.02
Acute hemorrhagic conjunctivitis	1	3			
Epidemic keratoconjunctivitis	19	20	20	17	0.46
Bacterial meningitis	2	1	1		
Aseptic meningitis				1	0.04
Mycoplasma pneumonia	7	10	13	18	0.75
Chlamydial pneumonia (excluding psittacosis)		1			

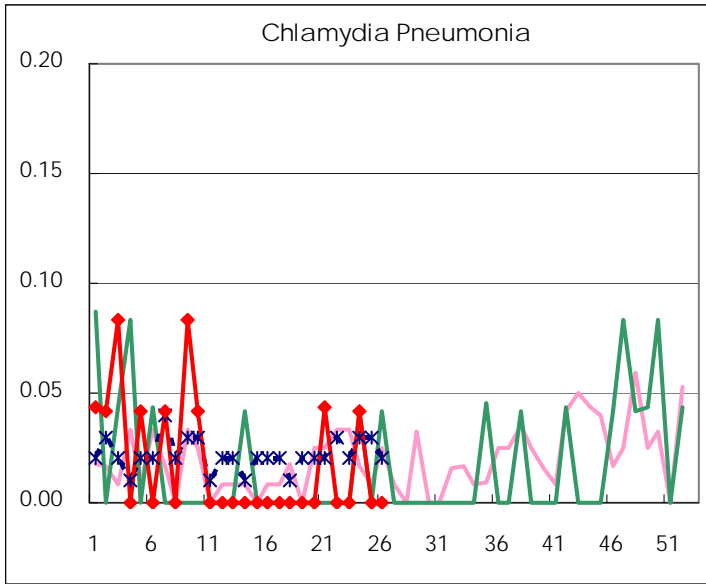
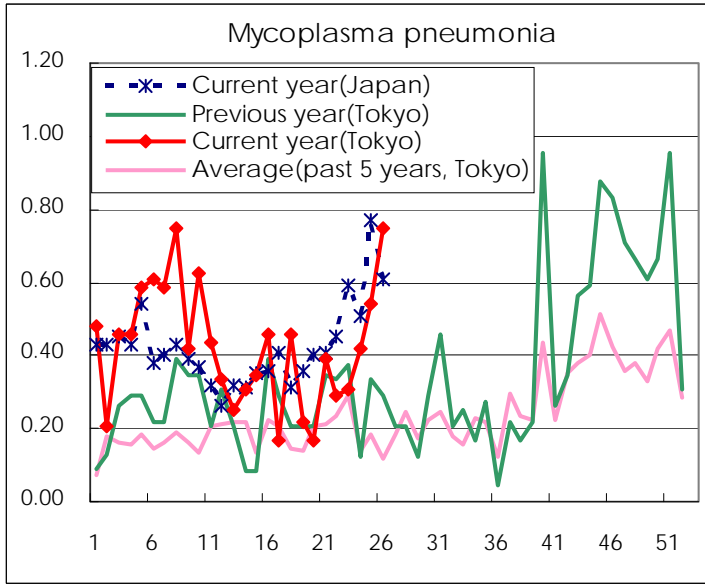
(Blank means 0.)

Disease Trend Graph (weekly reported cases per sentinel in comparison)









Number of sentinel facilities for weekly reporting		
Types of sentinels	Number of sentinels	Sentinels having reported
Pediatric	264	260
Influenza	419	412
Ophthalmic	39	37
Specially-designated	25	24

Tokyo Metropolitan Government
Infectious Disease Surveillance Center