
INFECTIOUS DISEASES WEEKLY REPORT

TOKYO IDWR

Tokyo Metropolitan Infectious Disease Surveillance Center

14 July 2011 / Number 27

Surveillance System in Tokyo, Japan

The infectious diseases which all physicians must report

All physicians must report to health centers the incidence of the diseases which are shown at page one. Health centers electronically report the individual cases to Tokyo Metropolitan Infectious Disease Surveillance Center.

The infectious diseases required to be reported by the sentinels

The numbers of patients who visit the sentinel clinics or hospitals during a week are reported to health centers in Tokyo. And they electronically report the numbers to Tokyo Metropolitan Infectious Disease Surveillance Center. We have about 500 sentinel clinics and hospitals in Tokyo.

1st Week is early January and 52nd Week is end of December.

Tokyo Metropolitan Institute of Public Health
Epidemiological Information Office

TEL:81-3-3363-3213 FAX:81-3-5332-7365

e-mail:idsc@tokyo-eiken.go.jp

URL:idsc.tokyo-eiken.go.jp/

Number of patients with the diseases which all physicians must report

Category	Diseases	Tokyo				Japan		
		24th	25th	26th	27th	Cum 2011	27th	Cum 2011
I	Ebola hemorrhagic fever							
	Crimean-Congo hemorrhagic fever							
	Smallpox							
	South American hemorrhagic fever							
	Plague							
	Marburg disease							
	Lassa fever							
II	Acute poliomyelitis					1		1
	Tuberculosis	73	80	77	56	2,384	381	14,947
	Diphtheria							
	Severe Acute Respiratory Syndrome(SARS)							
	Avian influenza H5N1							
III	Cholera							2
	Shigellosis	2	2		2	28	4	103
	Enterohemorrhagic Escherichia coli infection	6	4	12	6	62	102	1,296
	Typhoid fever					2	1	11
	Paratyphoid fever					8		13
IV	Hepatitis E					6		37
	West Nile fever							
	Hepatitis A	2	1		1	20	1	131
	Echinococcosis					1		11
	Yellow fever							
	Psittacosis				1	2	1	9
	Omsk hemorrhagic fever							
	Relapsing fever							
	Kyasanur forest disease							
	Q fever							
	Rabies							
	Coccidioidomycosis					2		2
	Monkeypox							
	Hemorrhagic fever with renal syndrome							
	Western equine encephalitis							
	Tick-borne encephalitis							
	Anthrax							
	Chikungunya fever							5
	Scrub typhus(Tsutsugamushi disease)					8	1	152
	Dengue fever				1	13	3	45
	Eastern equine encephalitis							
	Avian influenza (excluding H5N1)							
	Nipah virus infection							
	Japanese spotted fever					1	2	35
	Japanese encephalitis					1		1
	Hantavirus pulmonary syndrome							
	Herpes B virus infection							
	Glanders							
	Brucellosis						1	1
	Venezuelan equine encephalitis							
	Hendra virus infection							
Epidemic typhus								
Botulism							3	
Malaria	2					11	31	
Tularemia								
Lyme disease						2	3	
Lyssavirus infection(excluding rabies)						1		
Rift valley fever								
Melioidosis								
Legionellosis		1	2	1	28	16	329	
Leptospirosis					3		5	
Rocky mountain spotted fever								

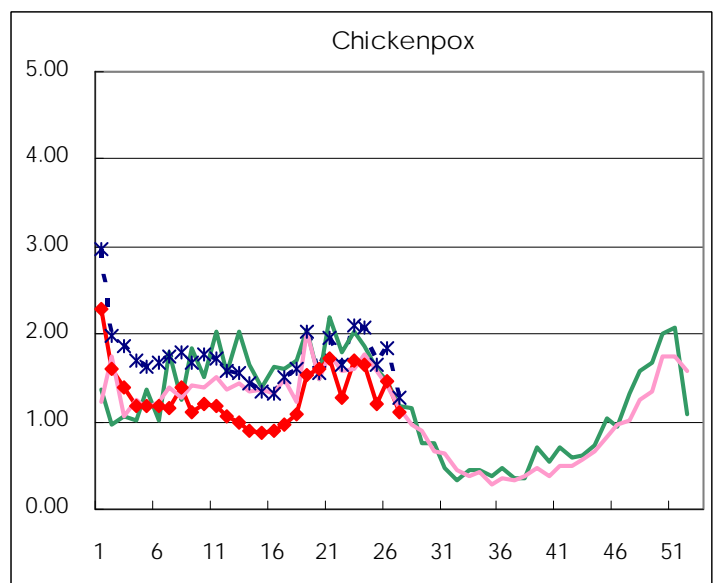
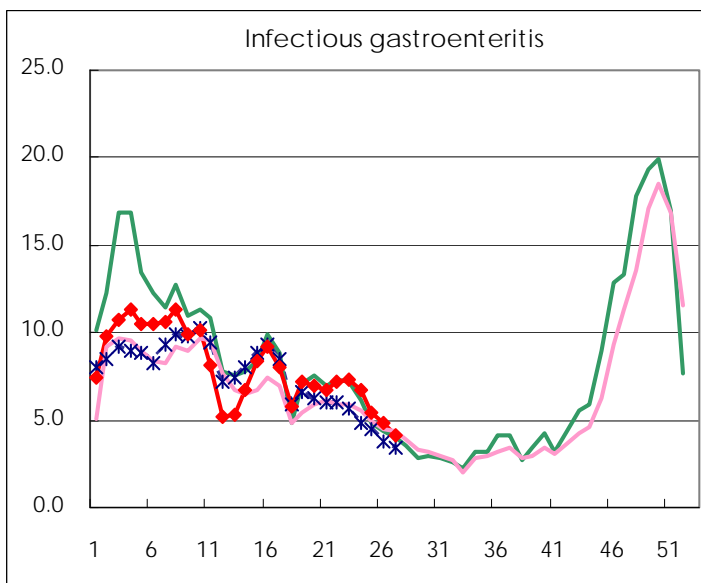
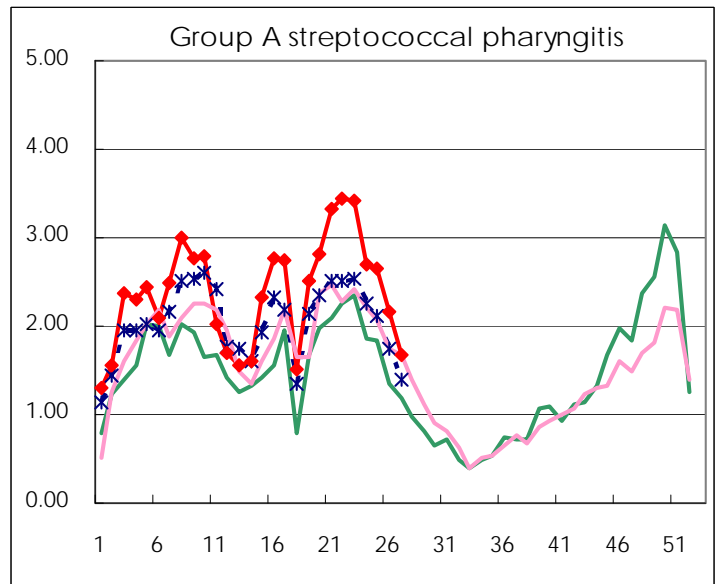
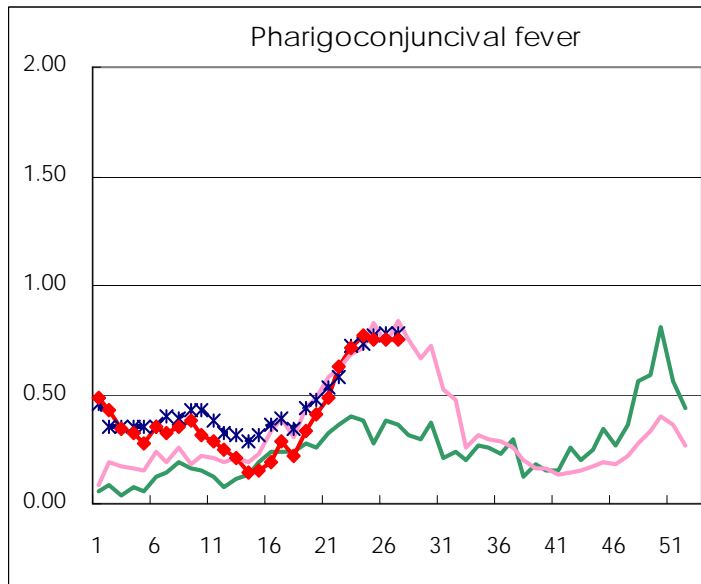
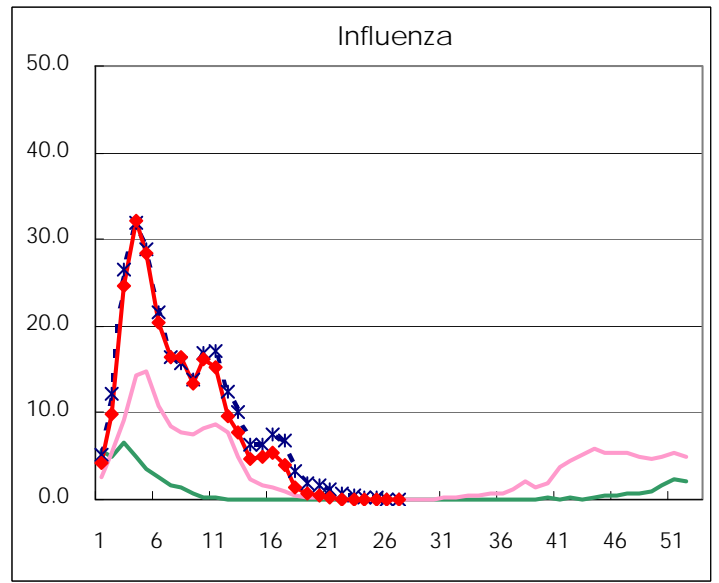
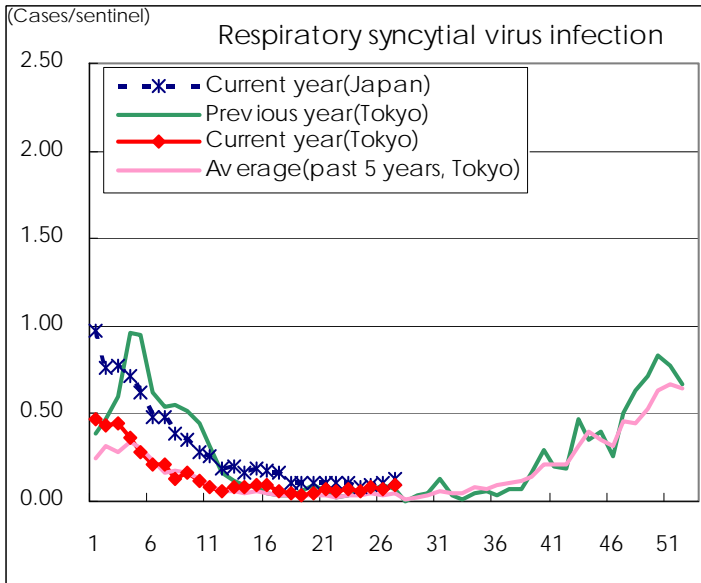
Category	Diseases	Tokyo					Japan	
		24th	25th	26th	27th	Cum 2011	27th	Cum 2011
V	Amebiasis	6	5	1	5	85	13	397
	Viral hepatitis(excluding hepatitis A and E)	2	1	2	1	24	4	135
	Acute encephalitis(excluding JE and WNE)		1			9	3	173
	Cryptosporidiosis					2		5
	Creutzfeldt-Jakob disease					9		59
	Severe invasive streptococcal infections(TSLS)	1				20	2	126
	Acquired immunodeficiency syndrome (AIDS)	6	8	4	9	209	21	725
	Giardiasis			1	1	7		35
	Meningococcal meningitis					2		7
	Congenital rubella syndrome							1
	Syphilis	4	6	4	6	110	11	379
	Tetanus	1		1		5	3	57
	Vancomycin-resistant S. aureus infection							
	Vancomycin-resistant Enterococcus infection				1	2	1	29
	Rubella	1	2	1		18	7	242
	Measles	4		2	2	153	13	353

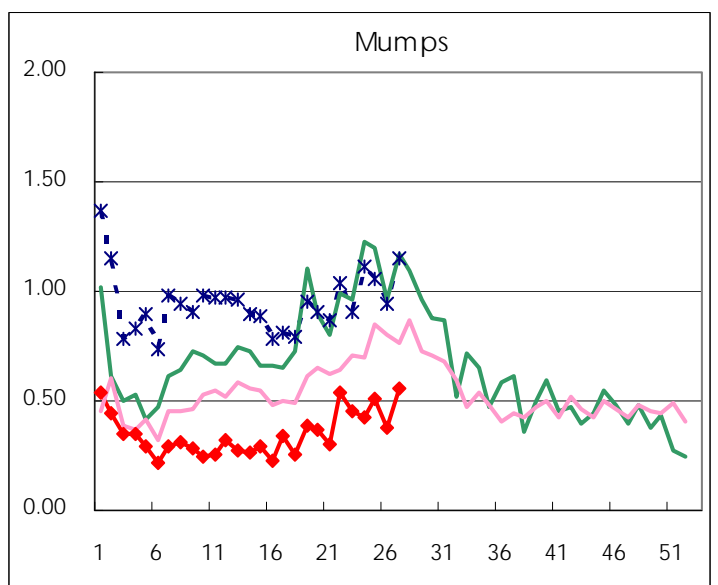
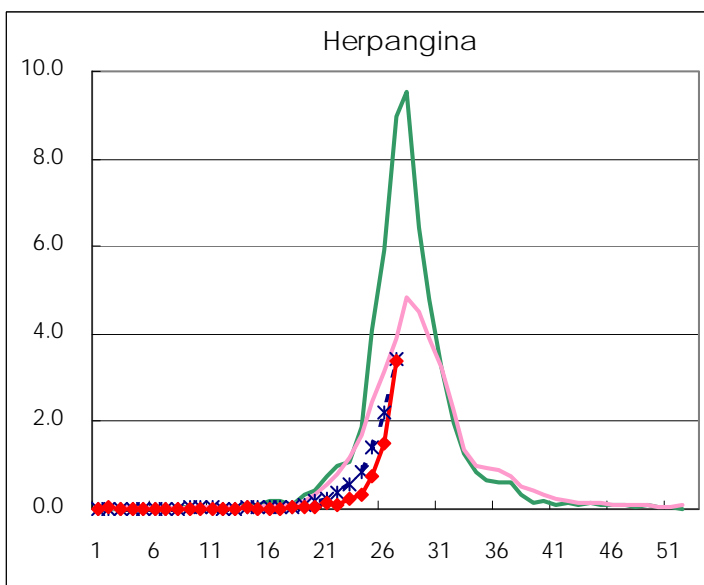
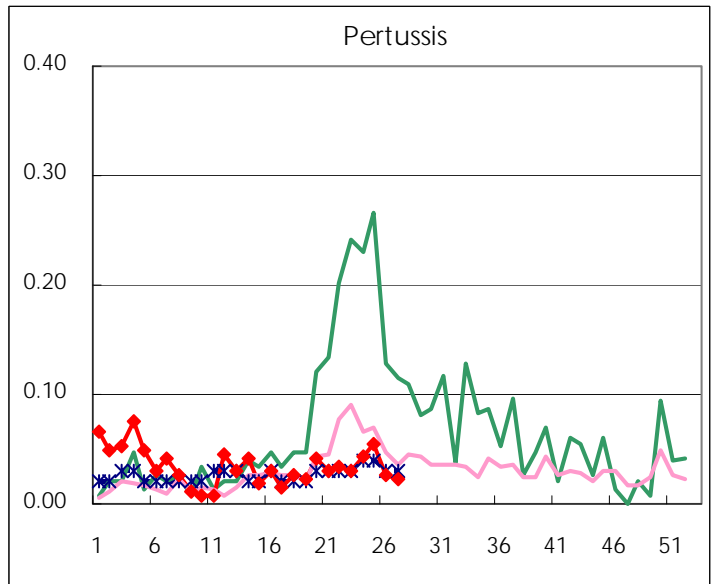
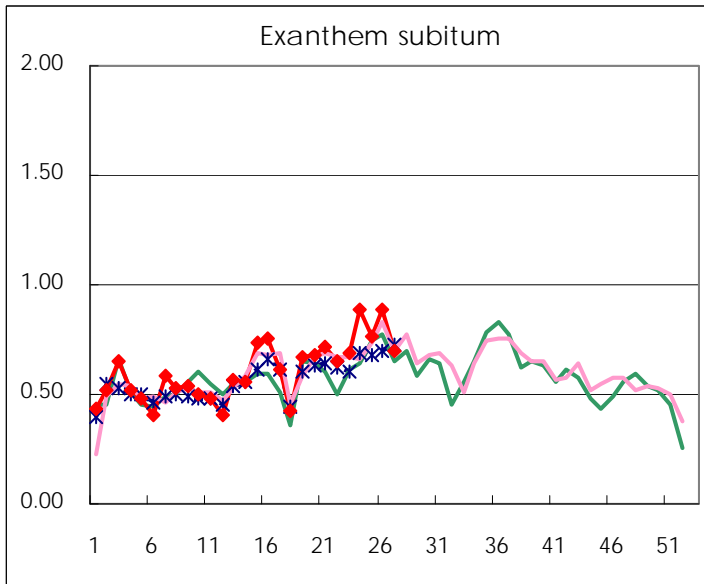
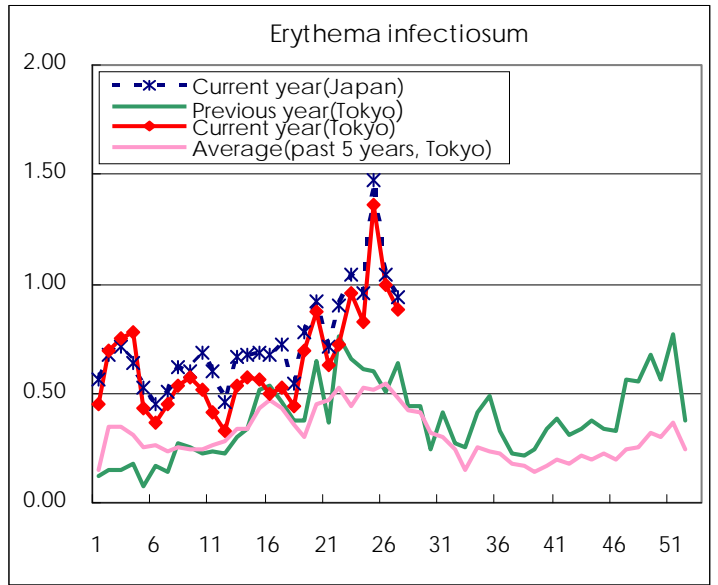
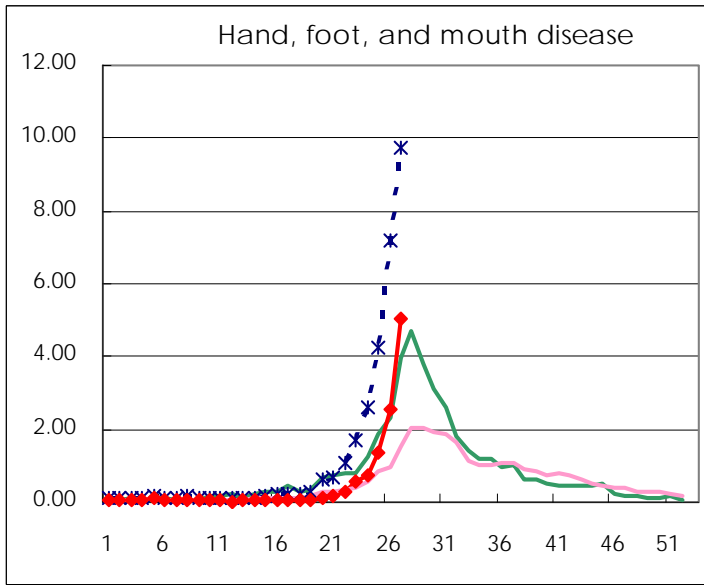
Number of patients with the diseases to be reported
by the designated clinics and hospitals

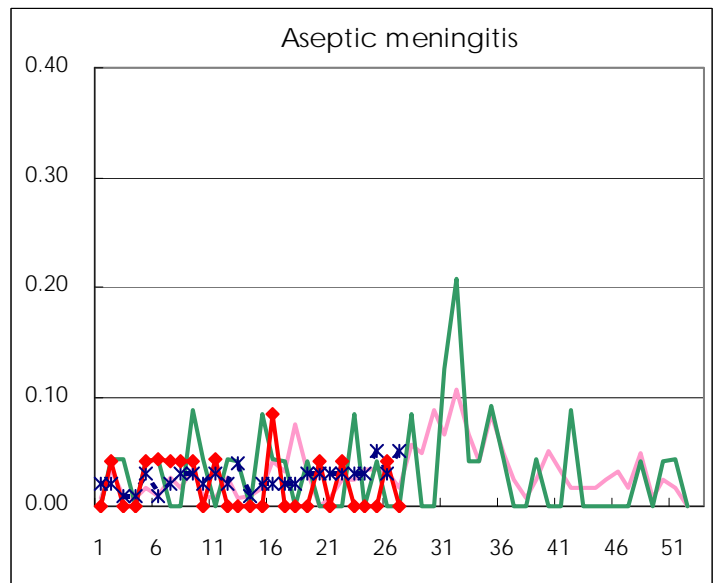
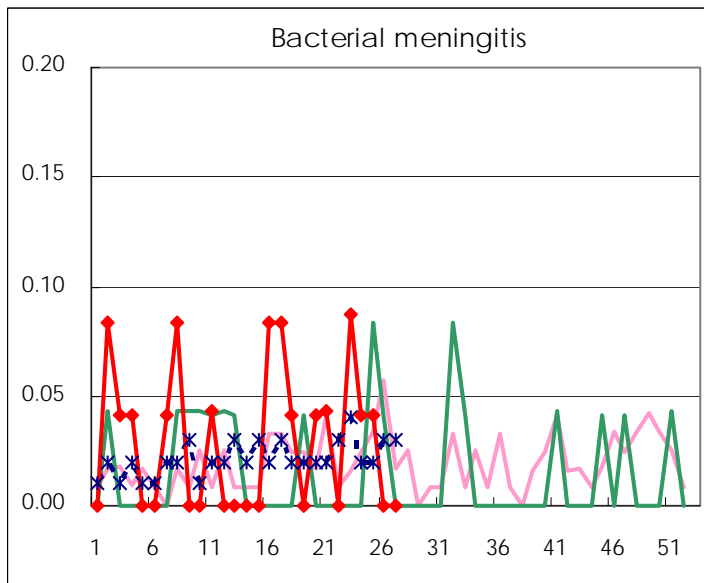
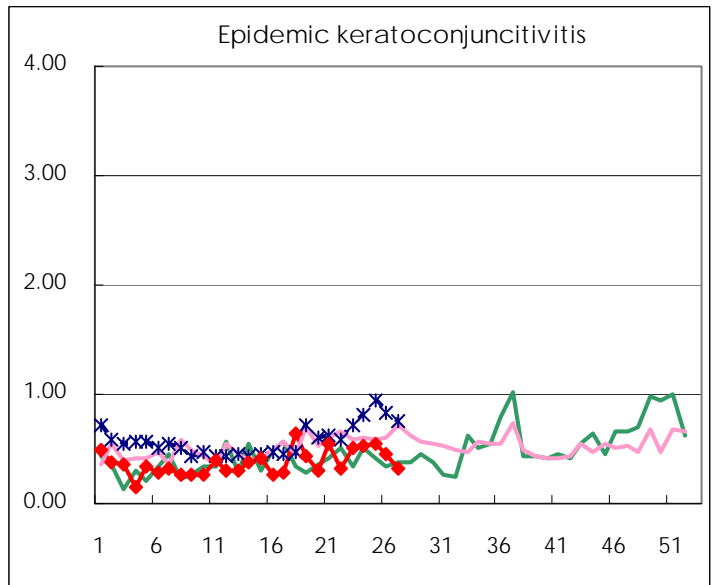
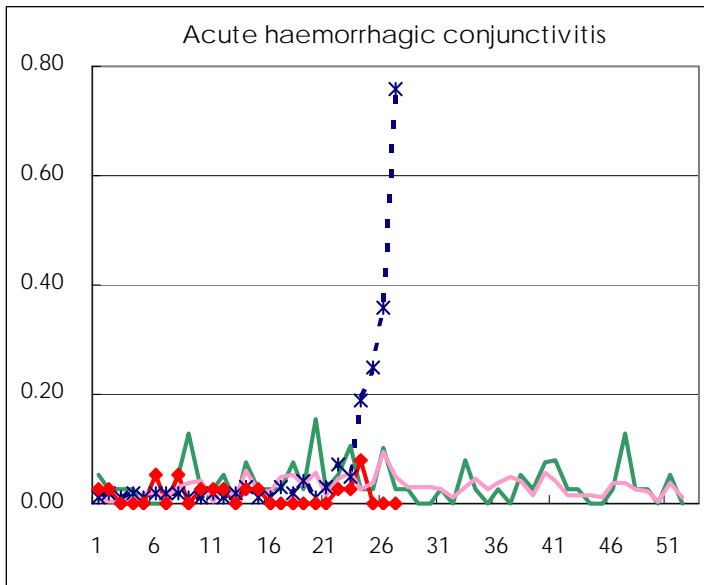
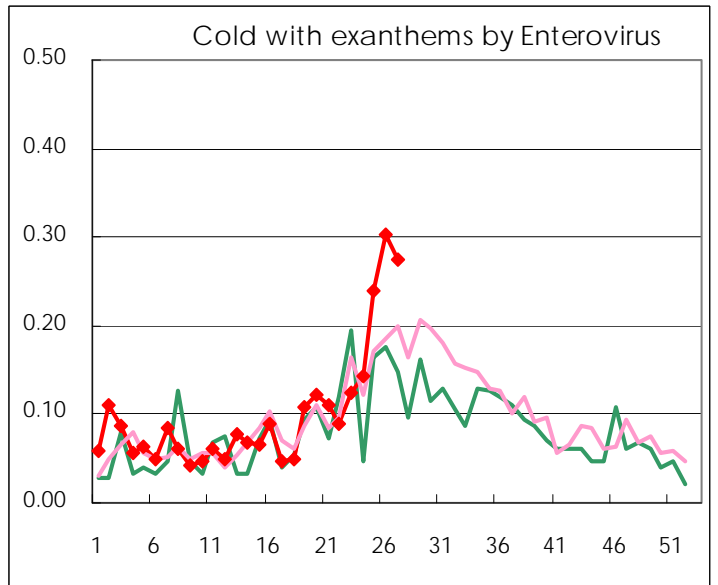
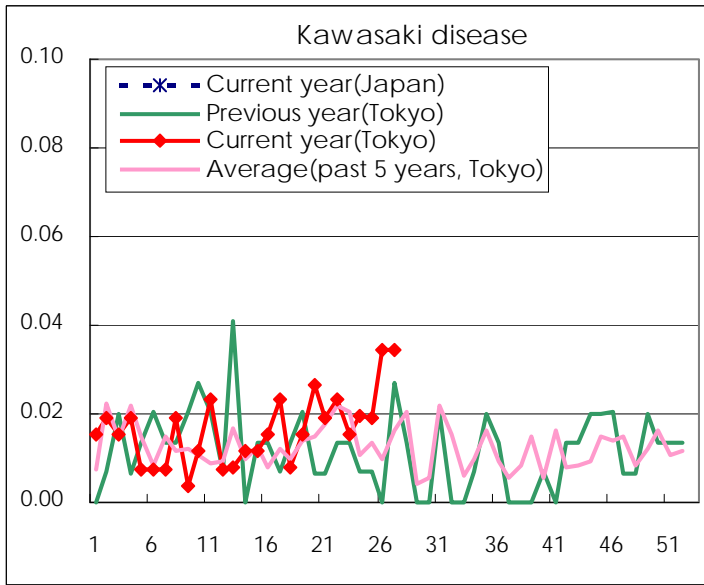
Diseases	2011				
	24th	25th	26th	27th	/sentinel
Respiratory syncytial virus infection	15	20	19	24	0.09
Pharyngoconjunctival fever	200	196	197	198	0.76
Group A streptococcal pharyngitis	699	688	563	439	1.68
Infectious gastroenteritis	1736	1,401	1,248	1,083	4.13
Chickenpox	426	315	384	292	1.11
Hand, foot, and mouth disease	185	349	663	1,320	5.04
Erythema infectiosum	214	355	260	232	0.89
Exanthem subitum	230	198	232	183	0.70
Pertussis	11	14	7	6	0.02
Herpangina	88	194	389	883	3.37
Mumps	110	133	98	145	0.55
Kawasaki disease	5	5	9	9	0.03
Cold with exanths by Enterovirus	37	62	79	72	0.27
Influenza	11	11	9	15	0.04
Acute hemorrhagic conjunctivitis	3				
Epidemic keratoconjunctivitis	20	20	17	12	0.32
Bacterial meningitis	1	1			
Aseptic meningitis			1		
Mycoplasma pneumonia	10	13	18	15	0.65
Chlamydial pneumonia (excluding psittacosis)	1				

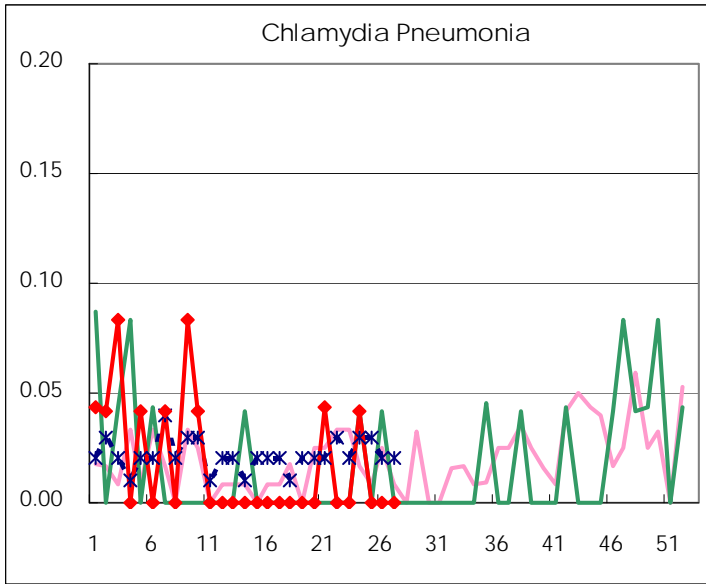
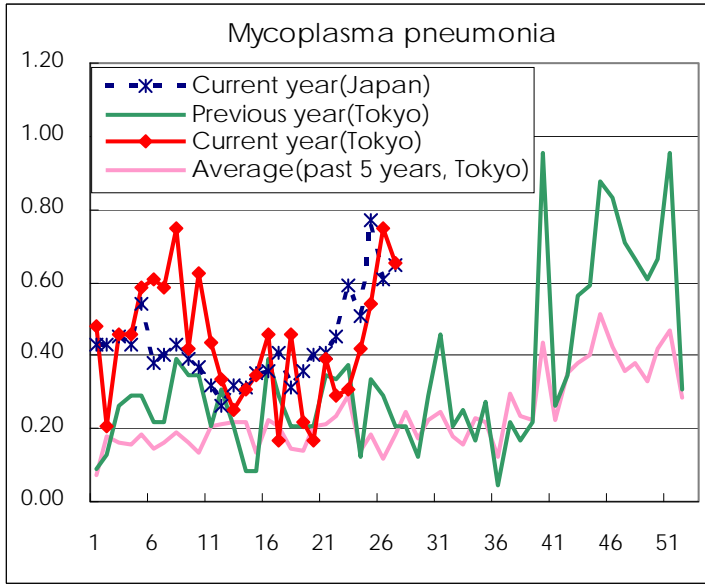
(Blank means 0.)

Disease Trend Graph (weekly reported cases per sentinel in comparison)









Number of sentinel facilities for weekly reporting		
Types of sentinels	Number of sentinels	Sentinels having reported
Pediatric	264	262
Influenza	419	416
Ophthalmic	39	37
Specially-designated	25	23

Tokyo Metropolitan Government
Infectious Disease Surveillance Center