
INFECTIOUS DISEASES WEEKLY REPORT

TOKYO IDWR

Tokyo Metropolitan Infectious Disease Surveillance Center

21 July 2011 / Number 28

Surveillance System in Tokyo, Japan

The infectious diseases which all physicians must report

All physicians must report to health centers the incidence of the diseases which are shown at page one. Health centers electronically report the individual cases to Tokyo Metropolitan Infectious Disease Surveillance Center.

The infectious diseases required to be reported by the sentinels

The numbers of patients who visit the sentinel clinics or hospitals during a week are reported to health centers in Tokyo. And they electronically report the numbers to Tokyo Metropolitan Infectious Disease Surveillance Center. We have about 500 sentinel clinics and hospitals in Tokyo.

1st Week is early January and 52nd Week is end of December.

Tokyo Metropolitan Institute of Public Health
Epidemiological Information Office

TEL:81-3-3363-3213 FAX:81-3-5332-7365

e-mail:idsc@tokyo-eiken.go.jp

URL:idsc.tokyo-eiken.go.jp/

Number of patients with the diseases which all physicians must report

Category	Diseases	Tokyo				Japan		
		25th	26th	27th	28h	Cum 2011	28h	Cum 2011
I	Ebola hemorrhagic fever							
	Crimean-Congo hemorrhagic fever							
	Smallpox							
	South American hemorrhagic fever							
	Plague							
	Marburg disease							
	Lassa fever							
II	Acute poliomyelitis					1		1
	Tuberculosis	82	79	70	62	2,470	334	15,509
	Diphtheria							
	Severe Acute Respiratory Syndrome(SARS)							
	Avian influenza H5N1							
III	Cholera							2
	Shigellosis	2		2	1	29	1	103
	Enterohemorrhagic Escherichia coli infection	4	12	6	5	67	80	1,382
	Typhoid fever					2		11
	Paratyphoid fever					8	1	14
IV	Hepatitis E					6		37
	West Nile fever							
	Hepatitis A	1		1	1	21		135
	Echinococcosis					1		11
	Yellow fever							
	Psittacosis			1		2	1	10
	Omsk hemorrhagic fever							
	Relapsing fever							
	Kyasanur forest disease							
	Q fever							
	Rabies							
	Coccidioidomycosis					2		2
	Monkeypox							
	Hemorrhagic fever with renal syndrome							
	Western equine encephalitis							
	Tick-borne encephalitis							
	Anthrax							
	Chikungunya fever							5
	Scrub typhus(Tsutsugamushi disease)					8	1	154
	Dengue fever			1		13	2	47
	Eastern equine encephalitis							
	Avian influenza (excluding H5N1)							
	Nipah virus infection							
	Japanese spotted fever					1	2	40
	Japanese encephalitis					1	1	2
	Hantavirus pulmonary syndrome							
	Herpes B virus infection							
	Glanders							
	Brucellosis							1
	Venezuelan equine encephalitis							
	Hendra virus infection							
Epidemic typhus								
Botulism							3	
Malaria				1	12	1	33	
Tularemia								
Lyme disease					2		3	
Lyssavirus infection(excluding rabies)								
Rift valley fever								
Melioidosis								
Legionellosis	1	2	1	2	30	20	355	
Leptospirosis					3		5	
Rocky mountain spotted fever								

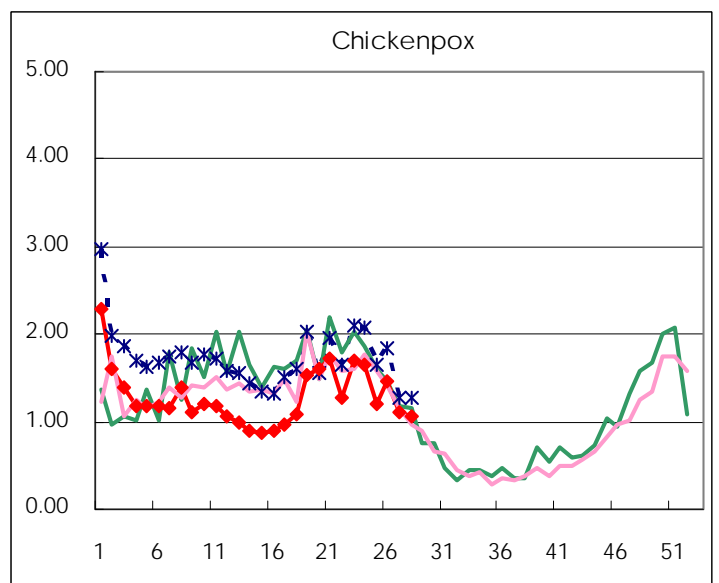
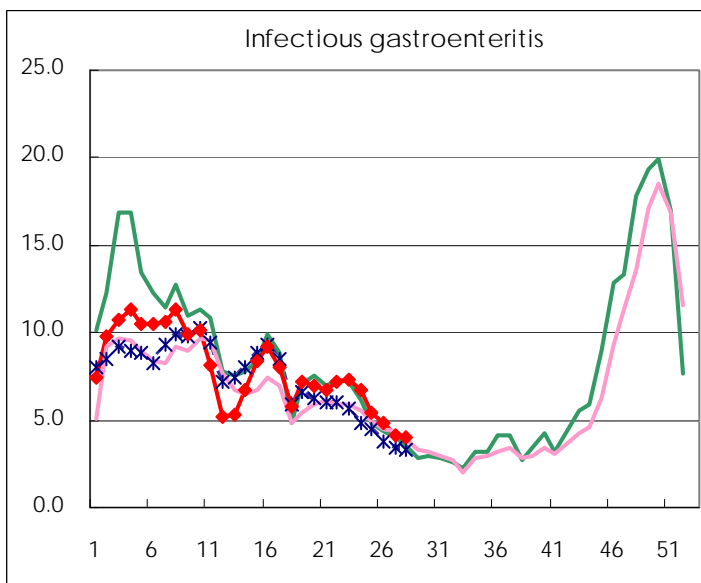
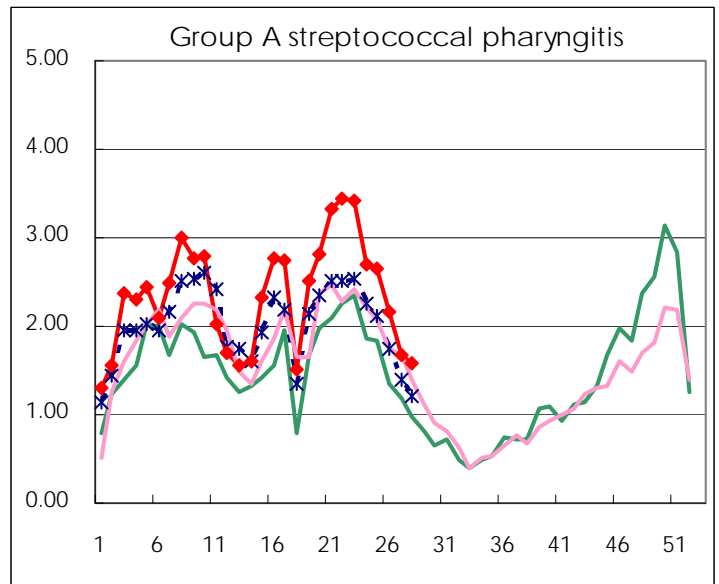
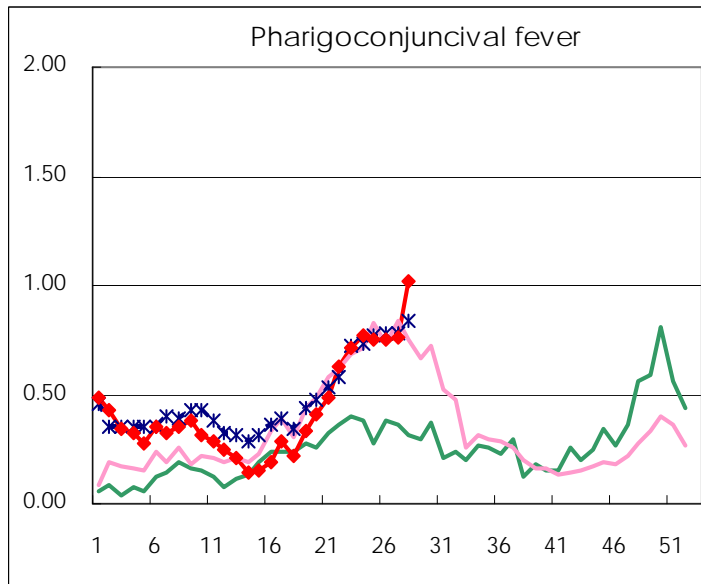
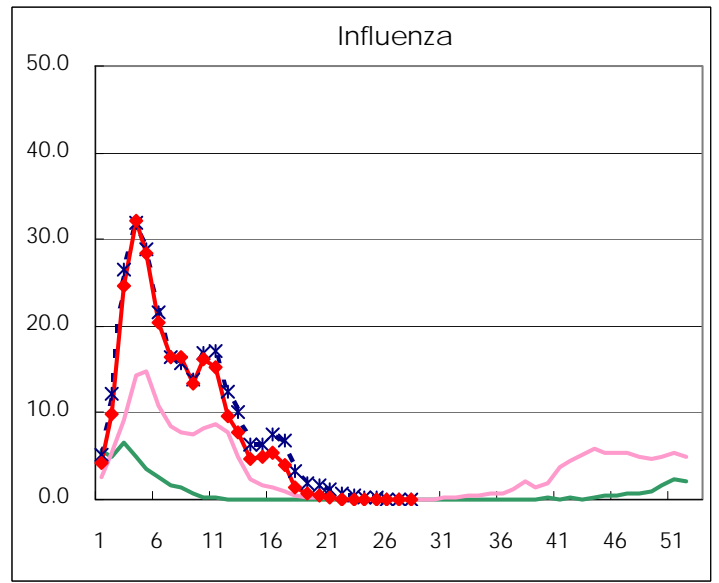
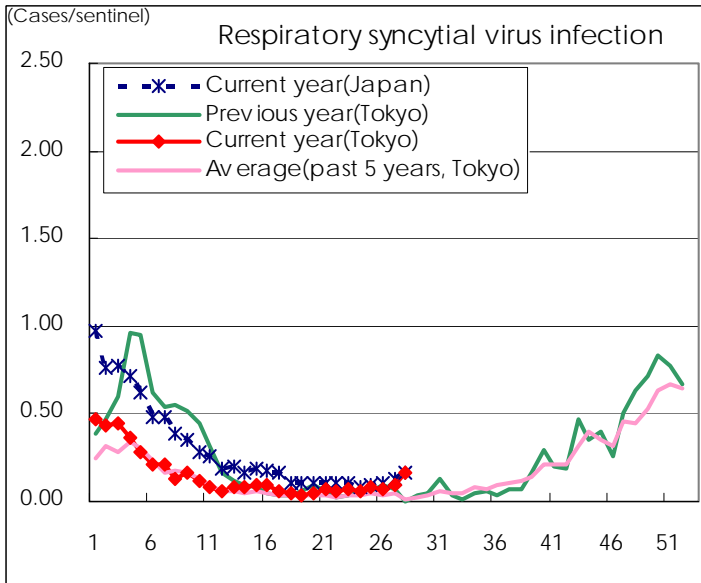
Category	Diseases	Tokyo				Japan		
		25th	26th	27th	28h	Cum 2011	28h	Cum 2011
V	Amebiasis	5	1	5	4	89	9	412
	Viral hepatitis(excluding hepatitis A and E)	1	2	1	1	25	2	141
	Acute encephalitis(excluding JE and WNE)	1				9	1	172
	Cryptosporidiosis					2		6
	Creutzfeldt-Jakob disease				1	10	2	62
	Severe invasive streptococcal infections(TSLS)					20		127
	Acquired immunodeficiency syndrome (AIDS)	8	4	9	8	217	21	753
	Giardiasis		1	1		7	1	36
	Meningococcal meningitis					2		7
	Congenital rubella syndrome							1
	Syphilis	6	4	6	3	113	8	391
	Tetanus		1			5	1	59
	Vancomycin-resistant S. aureus infection							
	Vancomycin-resistant Enterococcus infection					1	1	29
	Rubella	2	1		4	22	6	256
	Measles		2	2	1	154	7	363

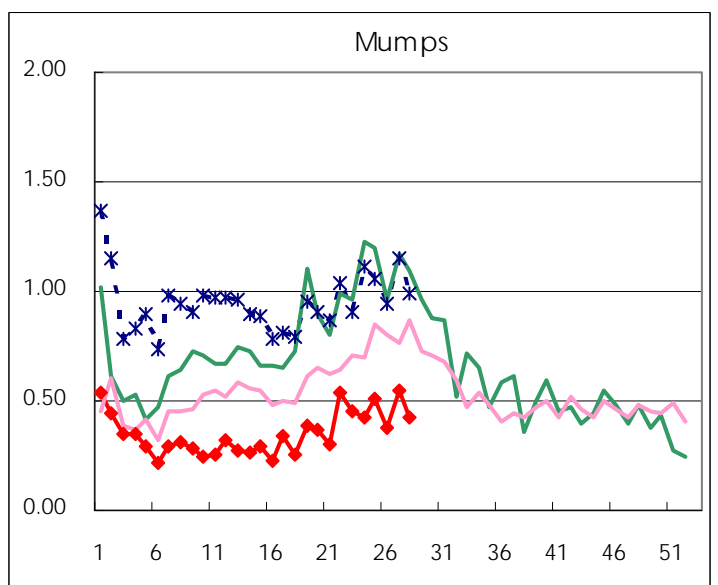
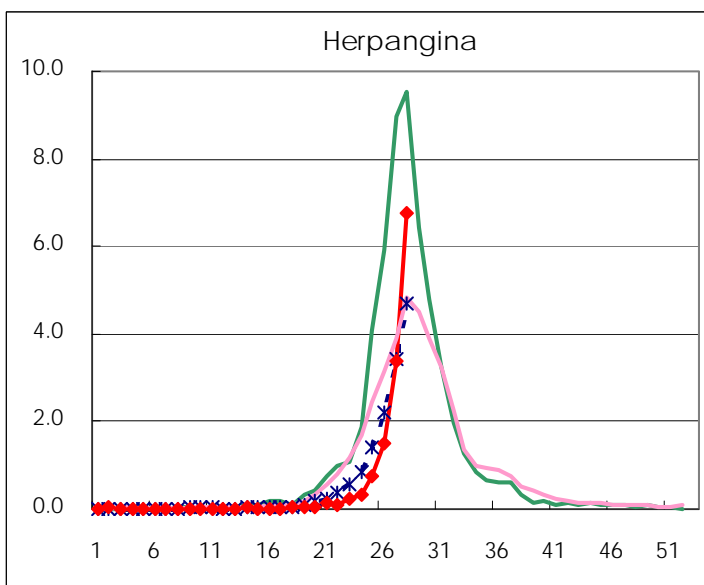
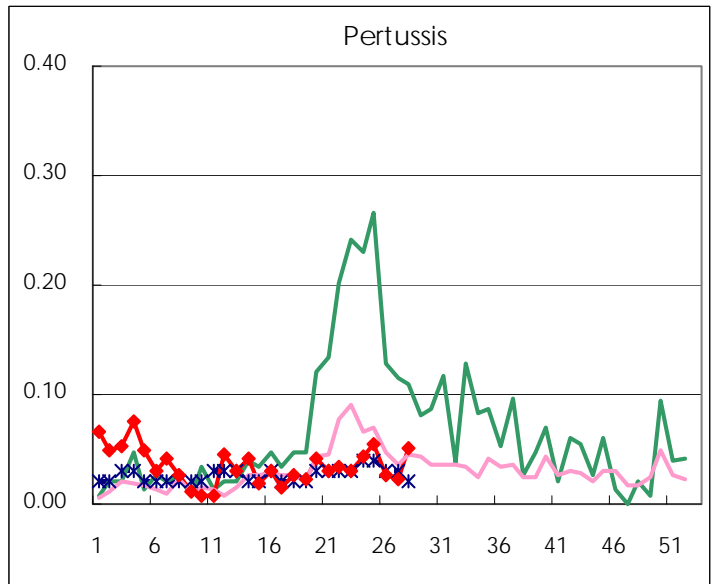
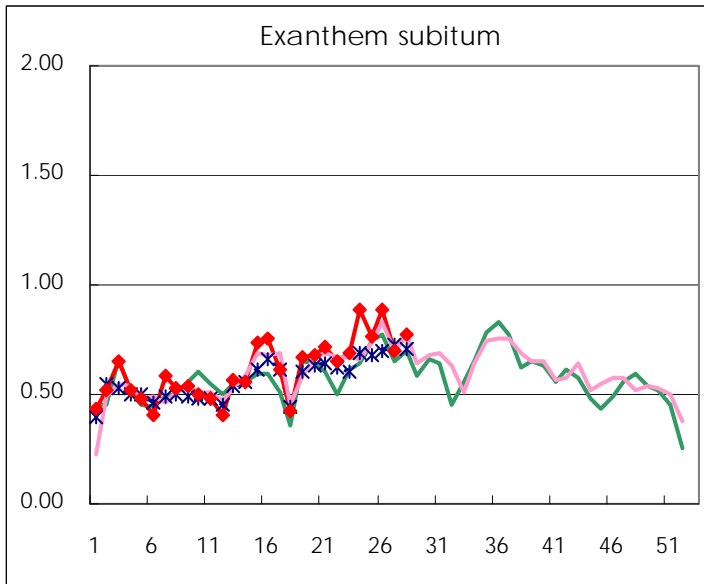
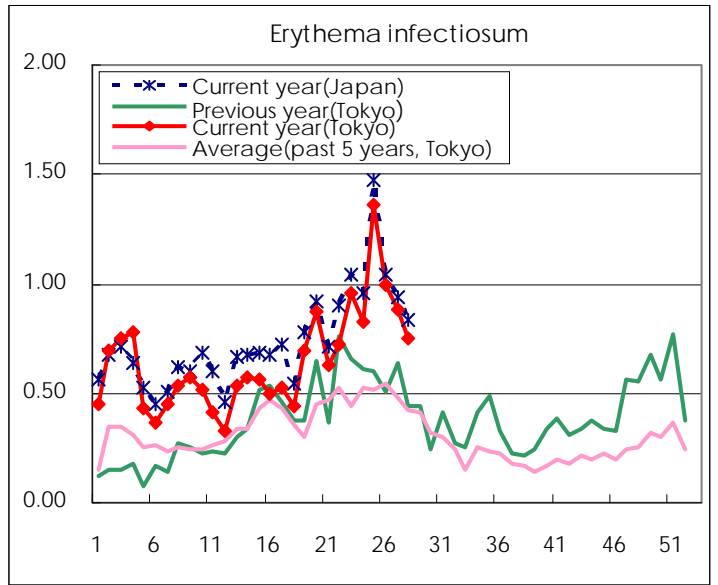
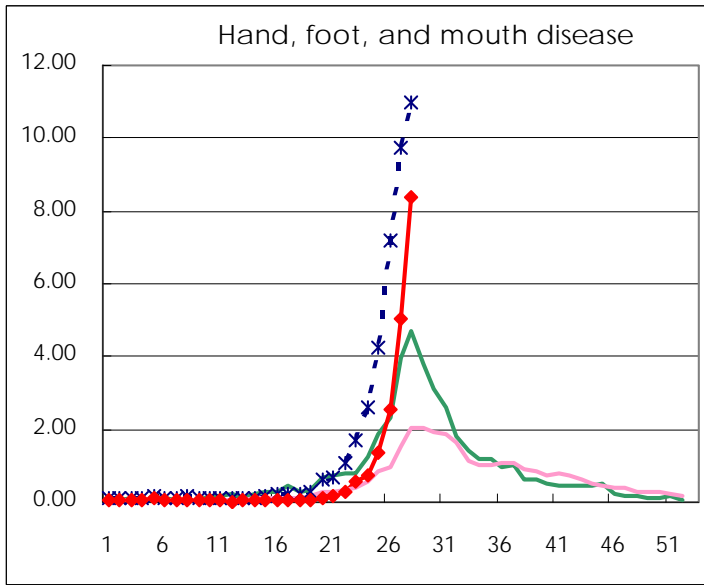
Number of patients with the diseases to be reported
by the designated clinics and hospitals

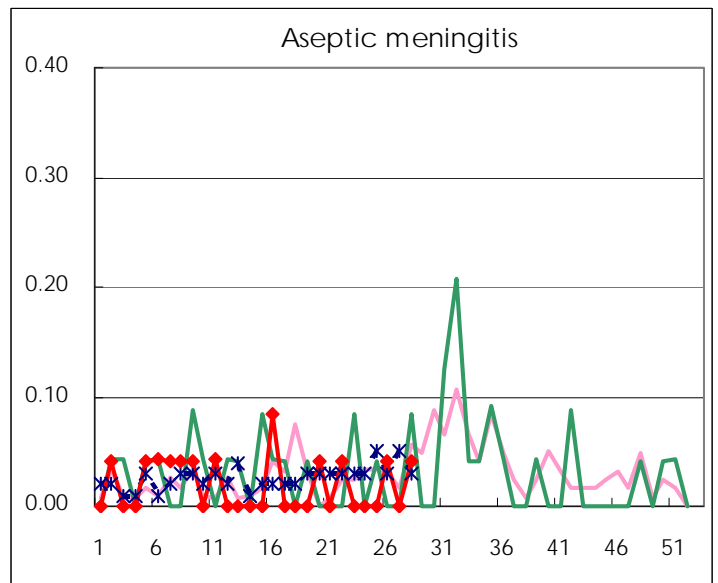
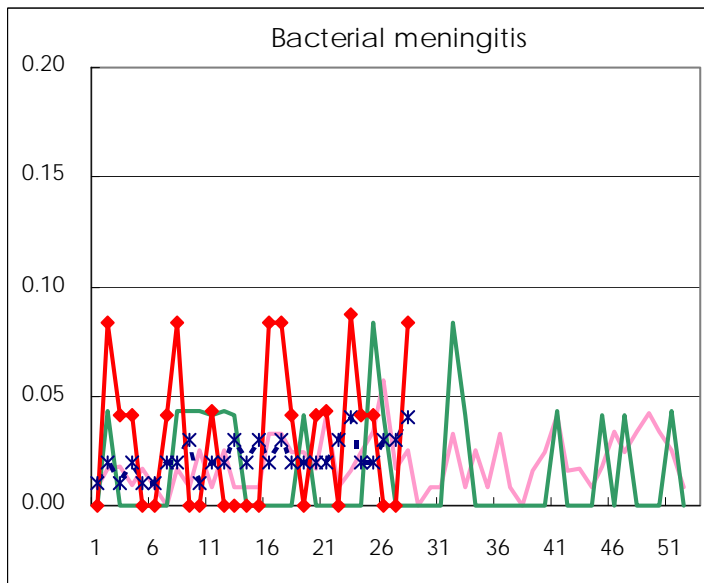
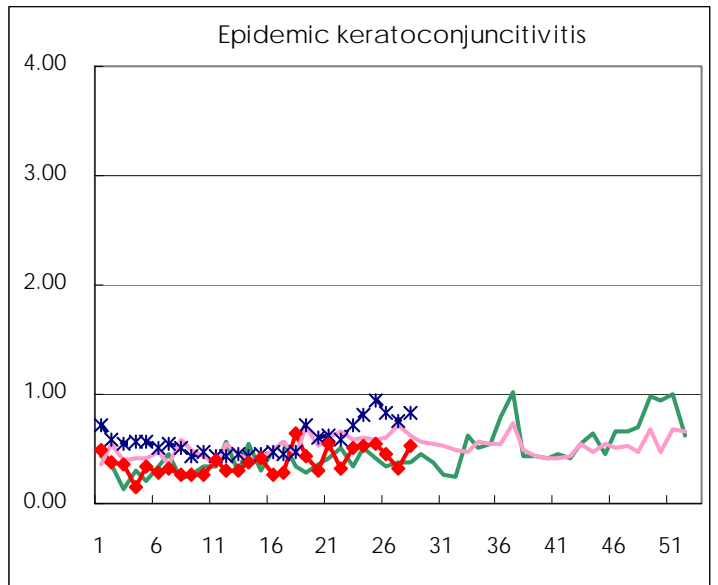
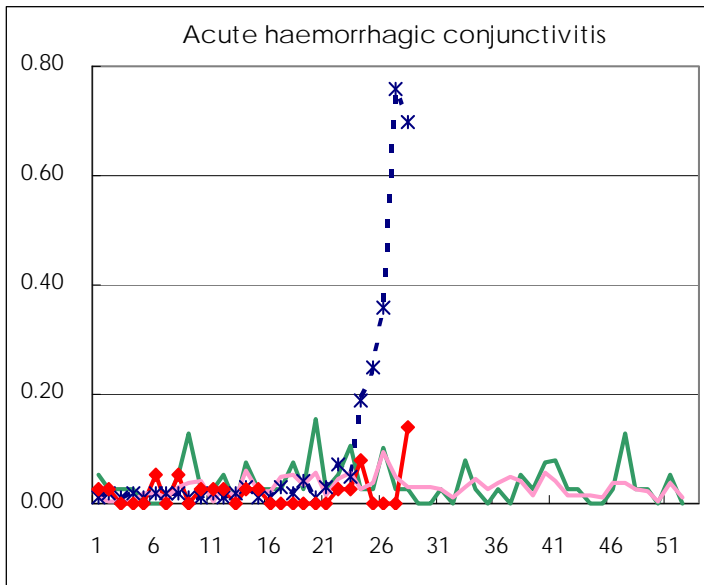
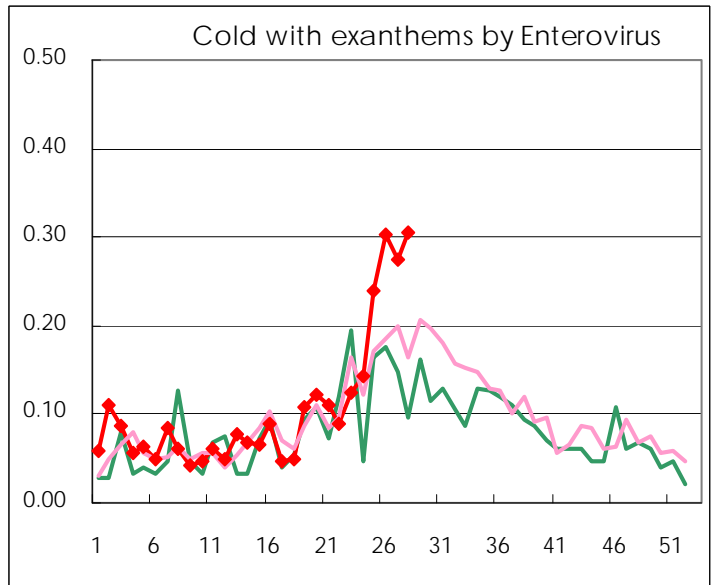
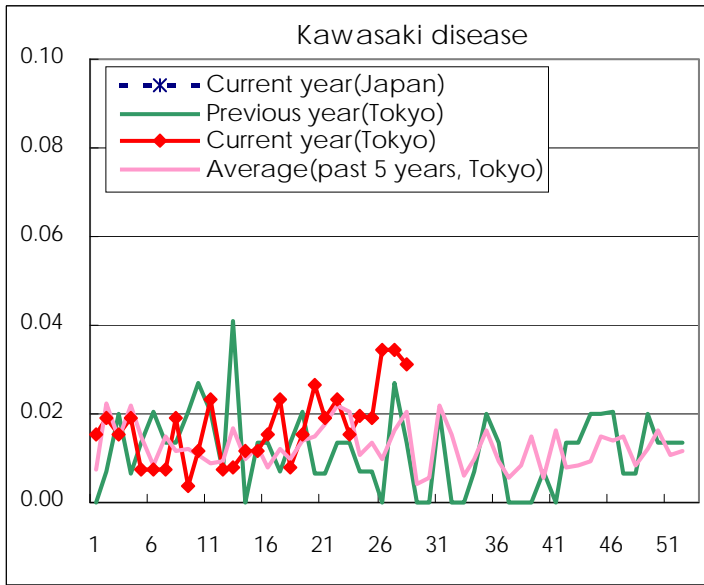
Diseases	2011				
	25th	26th	27th	28h	/sentinel
Respiratory syncytial virus infection	20	19	24	42	0.16
Pharyngoconjunctival fever	196	197	200	262	1.02
Group A streptococcal pharyngitis	688	563	439	409	1.59
Infectious gastroenteritis	1401	1,248	1,085	1,027	3.98
Chickenpox	315	384	293	272	1.05
Hand, foot, and mouth disease	349	663	1,325	2,164	8.39
Erythema infectiosum	355	260	232	195	0.76
Exanthem subitum	198	232	183	199	0.77
Pertussis	14	7	6	13	0.05
Herpangina	194	389	885	1,743	6.76
Mumps	133	98	145	109	0.42
Kawasaki disease	5	9	9	8	0.03
Cold with exanthems by Enterovirus	62	79	72	79	0.31
Influenza	11	9	15	3	0.01
Acute hemorrhagic conjunctivitis				5	0.14
Epidemic keratoconjunctivitis	20	17	12	19	0.53
Bacterial meningitis	1			2	0.08
Aseptic meningitis		1		1	0.04
Mycoplasma pneumonia	13	18	15	16	0.67
Chlamydial pneumonia (excluding psittacosis)					

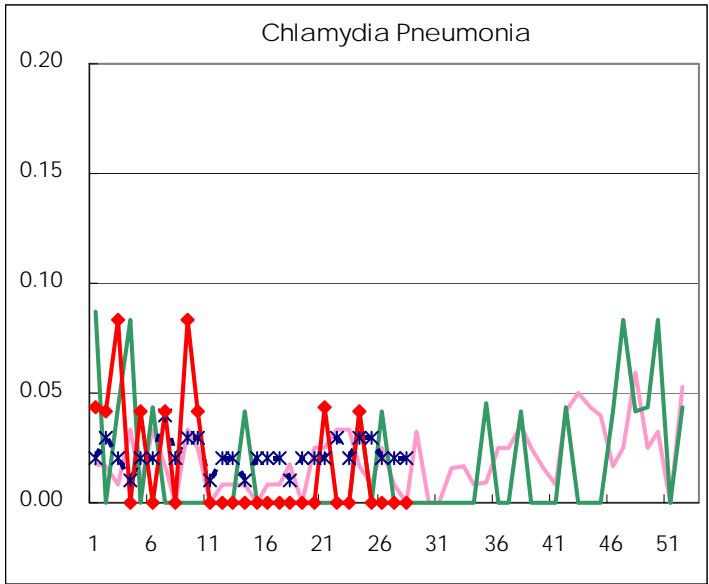
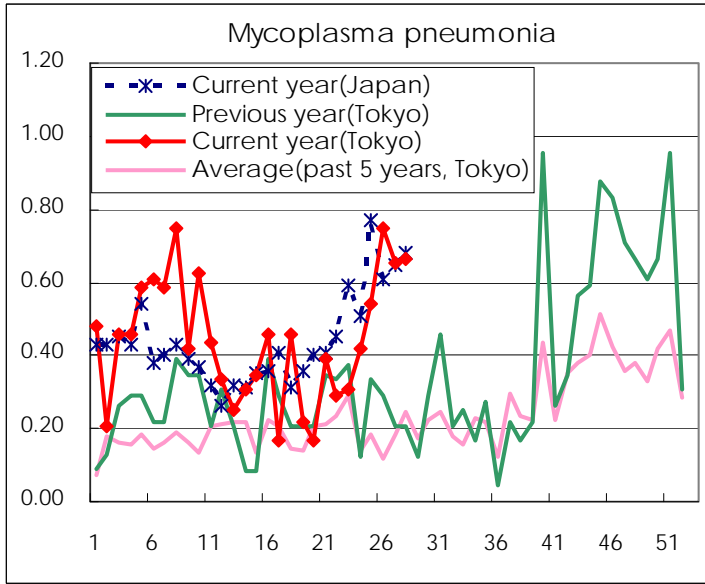
(Blank means 0.)

Disease Trend Graph (weekly reported cases per sentinel in comparison)









Number of sentinel facilities for weekly reporting		
Types of sentinels	Number of sentinels	Sentinels having reported
Pediatric	264	258
Influenza	419	412
Ophthalmic	39	36
Specially-designated	25	24

Tokyo Metropolitan Government
Infectious Disease Surveillance Center