
INFECTIOUS DISEASES WEEKLY REPORT

TOKYO IDWR

Tokyo Metropolitan Infectious Disease Surveillance Center

4 August 2011 / Number 30

Surveillance System in Tokyo, Japan

The infectious diseases which all physicians must report

All physicians must report to health centers the incidence of the diseases which are shown at page one. Health centers electronically report the individual cases to Tokyo Metropolitan Infectious Disease Surveillance Center.

The infectious diseases required to be reported by the sentinels

The numbers of patients who visit the sentinel clinics or hospitals during a week are reported to health centers in Tokyo. And they electronically report the numbers to Tokyo Metropolitan Infectious Disease Surveillance Center. We have about 500 sentinel clinics and hospitals in Tokyo.

1st Week is early January and 52nd Week is end of December.

Tokyo Metropolitan Institute of Public Health
Epidemiological Information Office

TEL:81-3-3363-3213 FAX:81-3-5332-7365

e-mail:idsc@tokyo-eiken.go.jp

URL:idsc.tokyo-eiken.go.jp/

Number of patients with the diseases which all physicians must report

Category	Diseases	Tokyo				Japan		
		27th	28th	29th	30th	Cum 2011	30th	Cum 2011
I	Ebola hemorrhagic fever							
	Crimean-Congo hemorrhagic fever							
	Smallpox							
	South American hemorrhagic fever							
	Plague							
	Marburg disease							
	Lassa fever							
II	Acute poliomyelitis					1		1
	Tuberculosis	89	110	78	65	2,698	320	16,909
	Diphtheria							
	Severe Acute Respiratory Syndrome(SARS)							
	Avian influenza H5N1							
III	Cholera						1	3
	Shigellosis	2	1	2	4	35	4	112
	Enterohemorrhagic Escherichia coli infection	6	6	22	16	106	208	1,798
	Typhoid fever			1		3	1	13
	Paratyphoid fever			1		9	1	16
IV	Hepatitis E					6		37
	West Nile fever							
	Hepatitis A	1	1			21	2	138
	Echinococcosis					1		11
	Yellow fever							
	Psittacosis	1				2		10
	Omsk hemorrhagic fever							
	Relapsing fever							
	Kyasanur forest disease							
	Q fever							
	Rabies							
	Coccidioidomycosis					2		2
	Monkeypox							
	Hemorrhagic fever with renal syndrome							
	Western equine encephalitis							
	Tick-borne encephalitis							
	Anthrax							
	Chikungunya fever							5
	Scrub typhus(Tsutsugamushi disease)					8	1	157
	Dengue fever	1				13	1	50
	Eastern equine encephalitis							
	Avian influenza (excluding H5N1)							
	Nipah virus infection							
	Japanese spotted fever					1	3	45
	Japanese encephalitis					1		2
	Hantavirus pulmonary syndrome							
	Herpes B virus infection							
	Glanders							
	Brucellosis							
	Venezuelan equine encephalitis							
	Hendra virus infection							
Epidemic typhus								
Botulism							3	
Malaria		1				12	1	35
Tularemia								
Lyme disease						2		3
Lyssavirus infection(excluding rabies)								
Rift valley fever								
Melioidosis								
Legionellosis	1	2	1	1	32	12	393	
Leptospirosis					3		5	
Rocky mountain spotted fever								

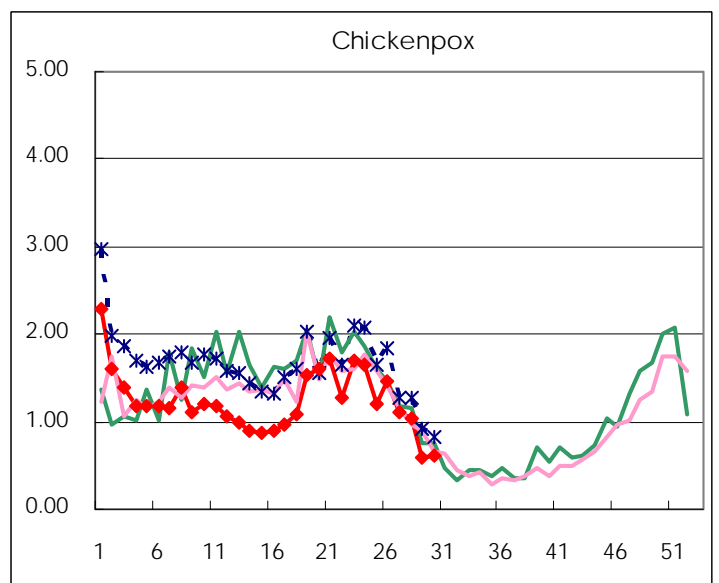
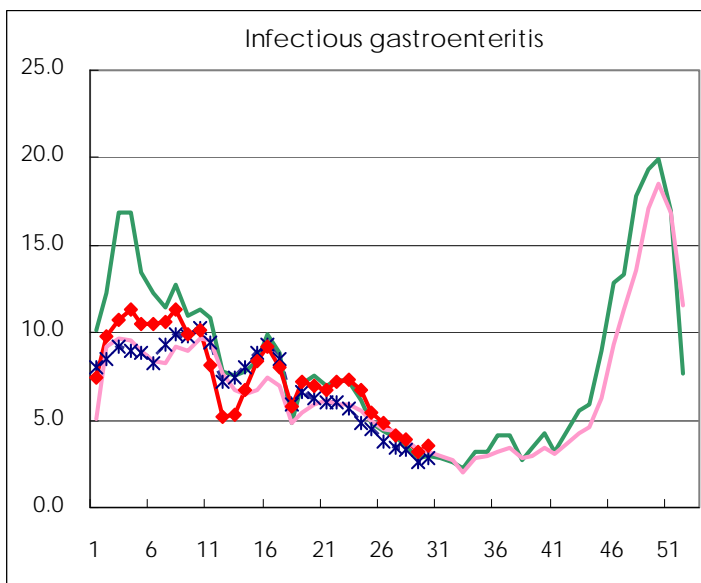
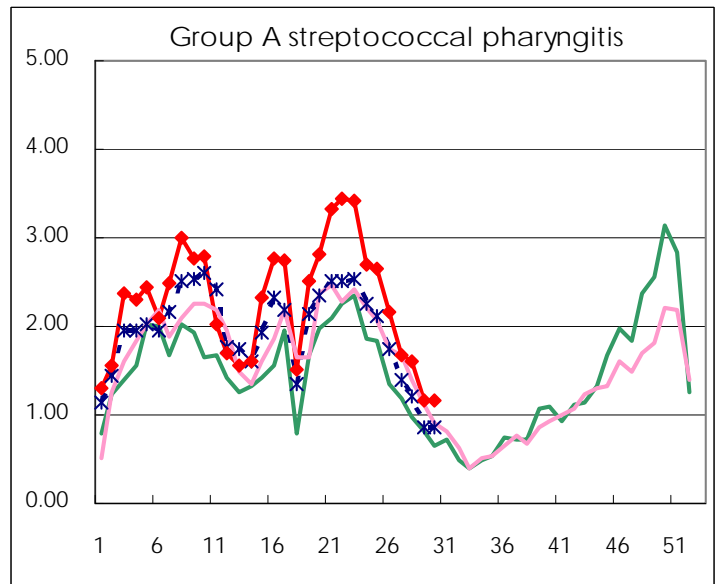
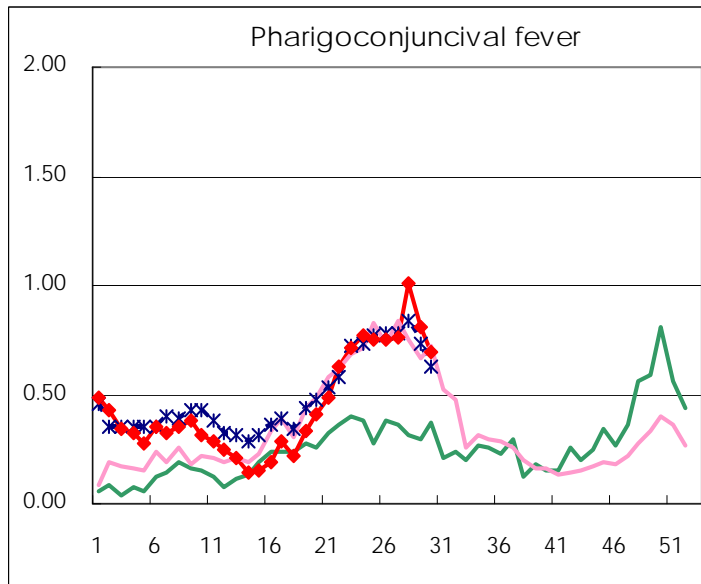
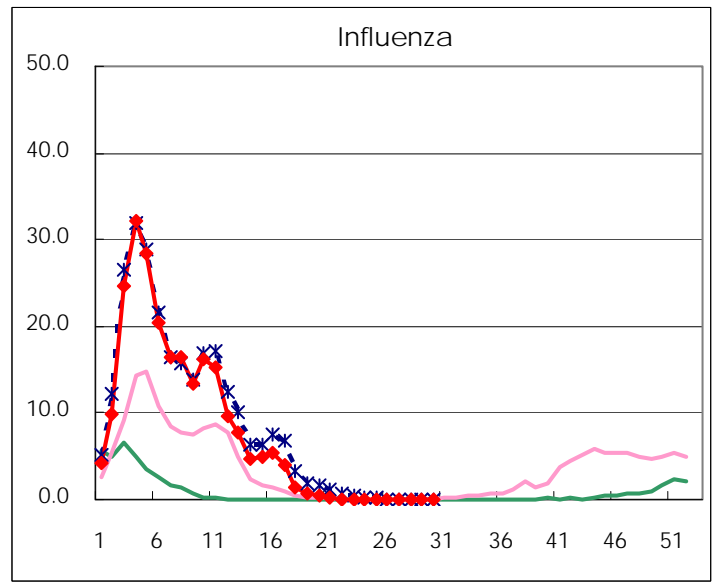
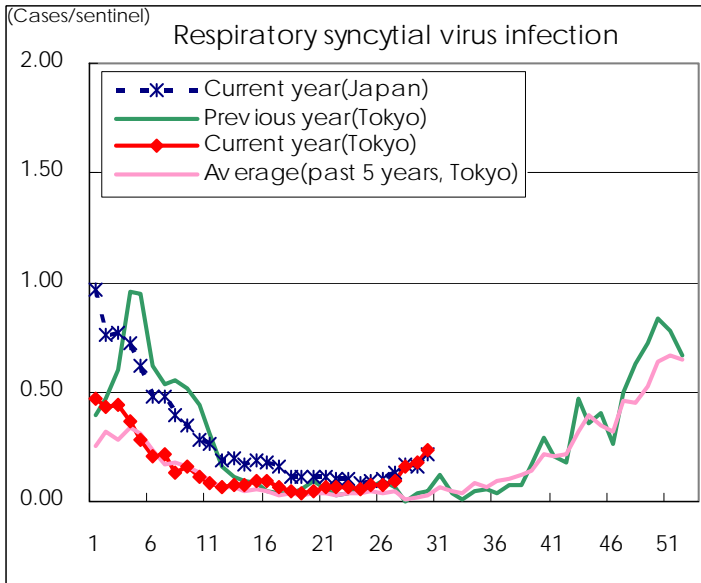
Category	Diseases	Tokyo				Japan		
		27th	28th	29th	30th	Cum 2011	30th	Cum 2011
V	Amebiasis	5	4	1	2	92	5	441
	Viral hepatitis(excluding hepatitis A and E)	1	1			25	3	153
	Acute encephalitis(excluding JE and WNE)			1		10	3	183
	Cryptosporidiosis					2		6
	Creutzfeldt-Jakob disease		1			10		65
	Severe invasive streptococcal infections(TSLS)			2	1	23	3	137
	Acquired immunodeficiency syndrome (AIDS)	9	8	8	8	233	19	810
	Giardiasis	1				7	1	39
	Meningococcal meningitis					2		7
	Congenital rubella syndrome							1
	Syphilis	6	6	5	4	125	7	427
	Tetanus					5	2	64
	Vancomycin-resistant S. aureus infection							
	Vancomycin-resistant Enterococcus infection					1		30
	Rubella		4		1	23	6	272
	Measles	2	2	1	1	157	4	372

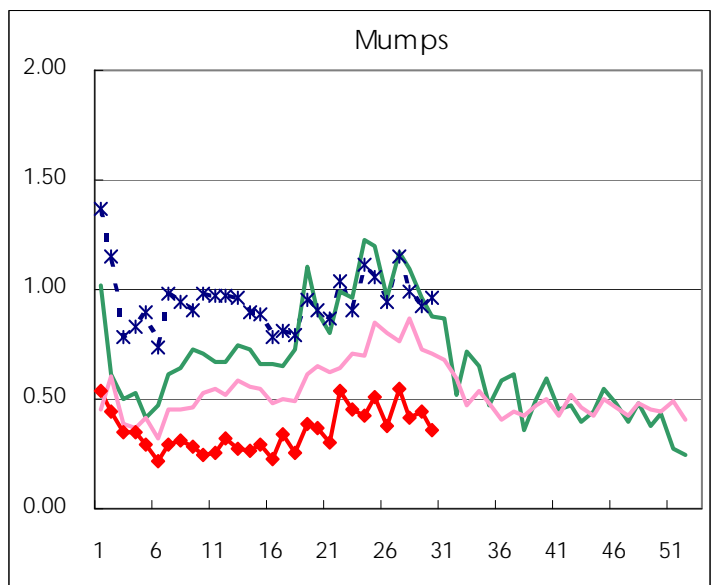
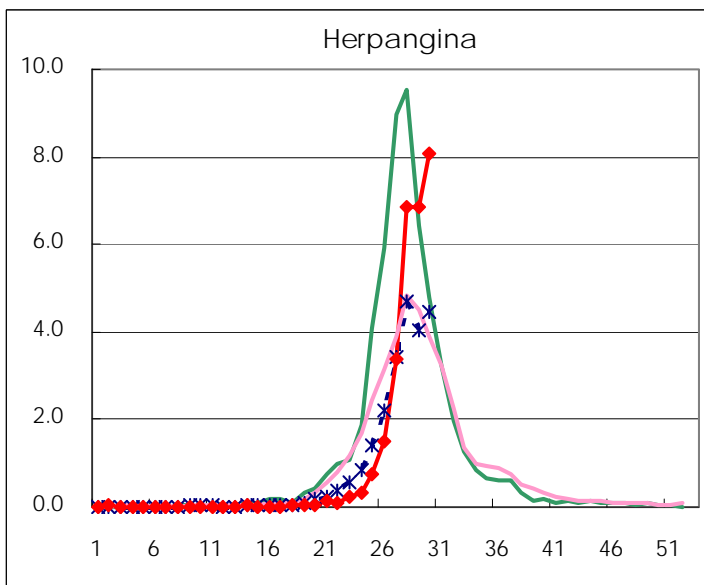
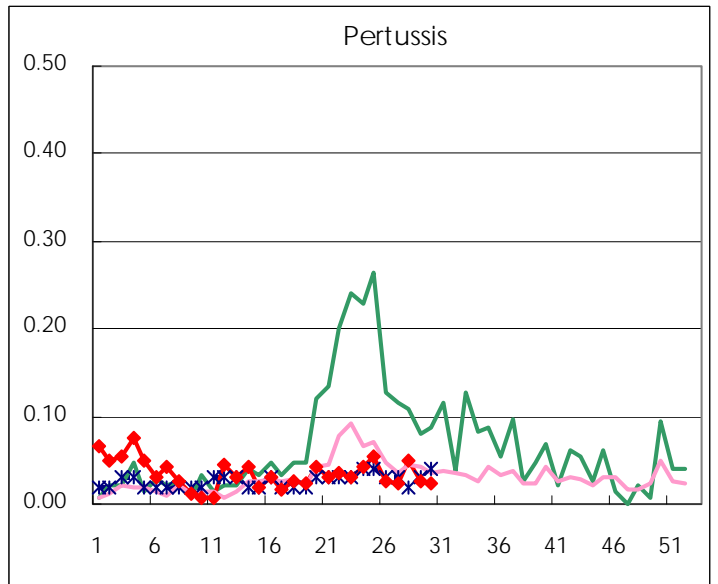
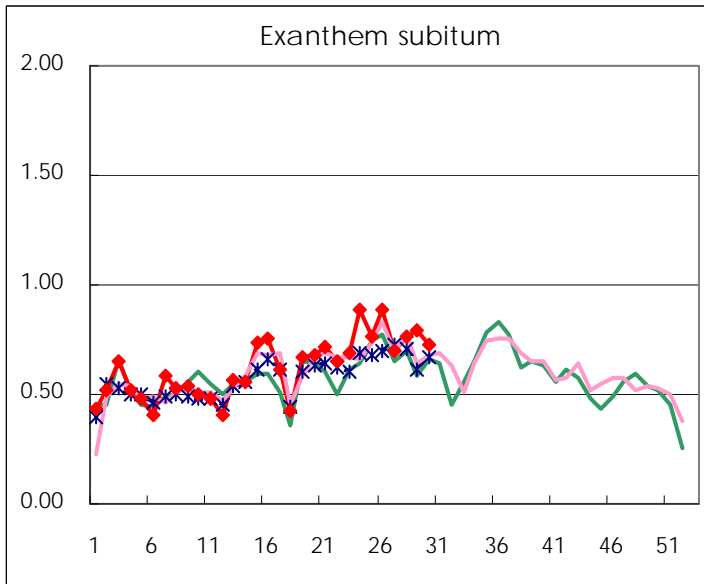
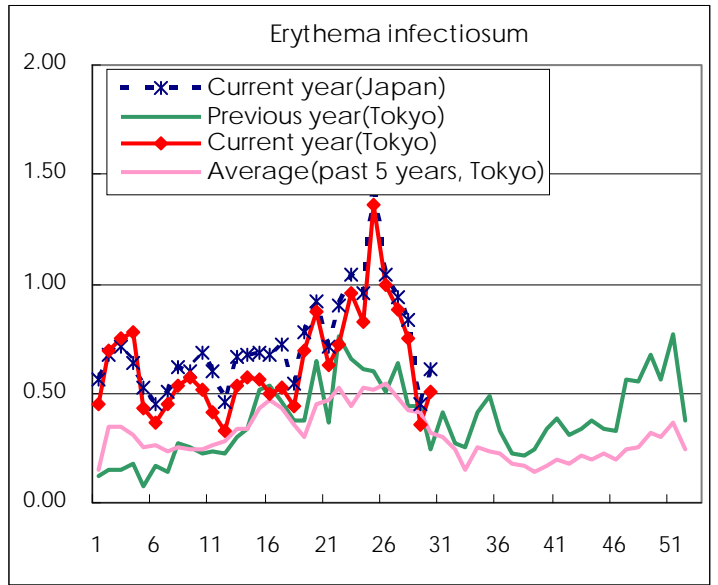
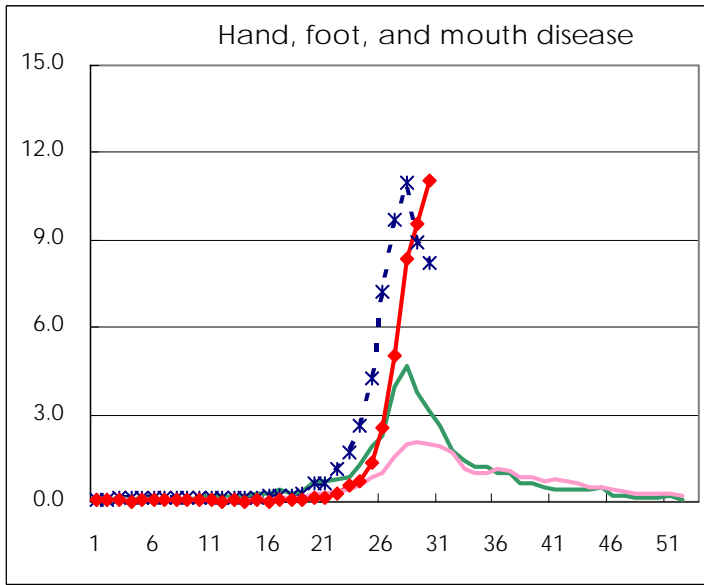
Number of patients with the diseases to be reported
by the designated clinics and hospitals

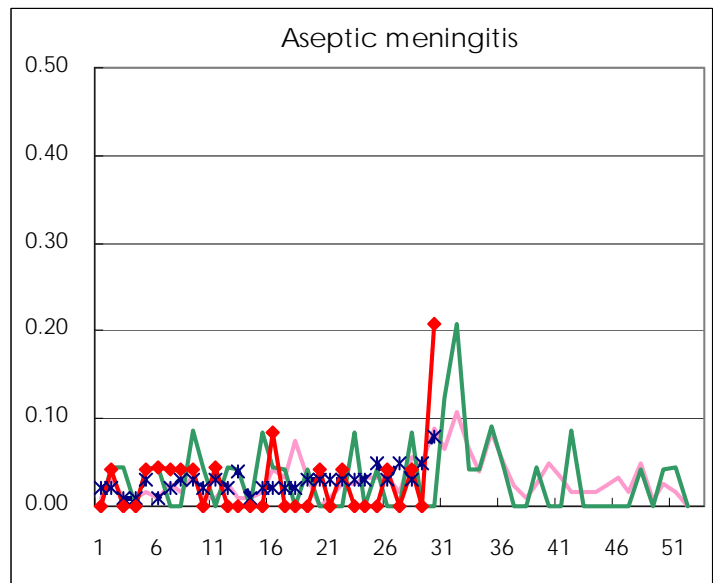
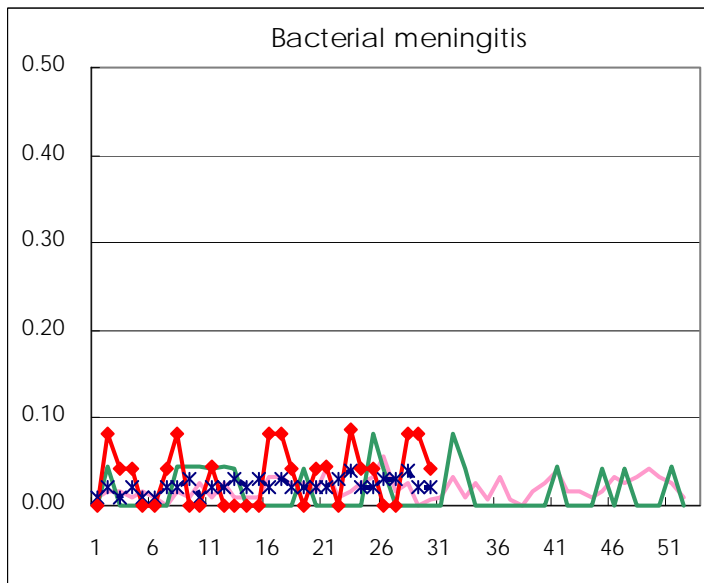
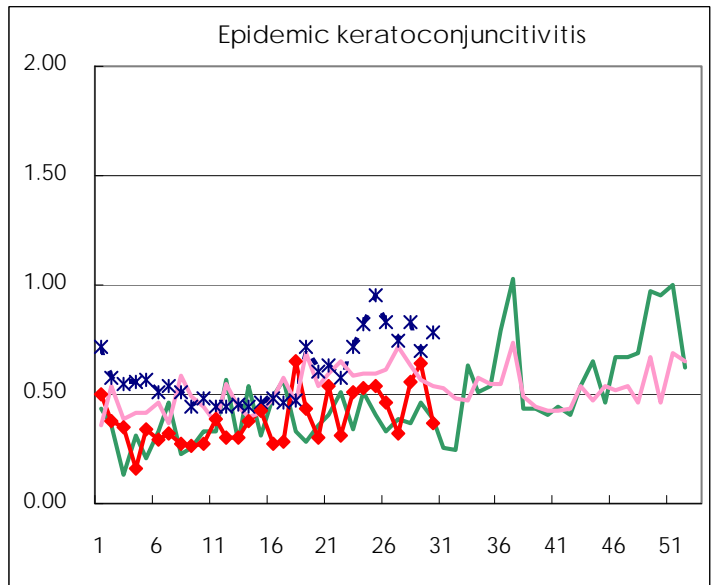
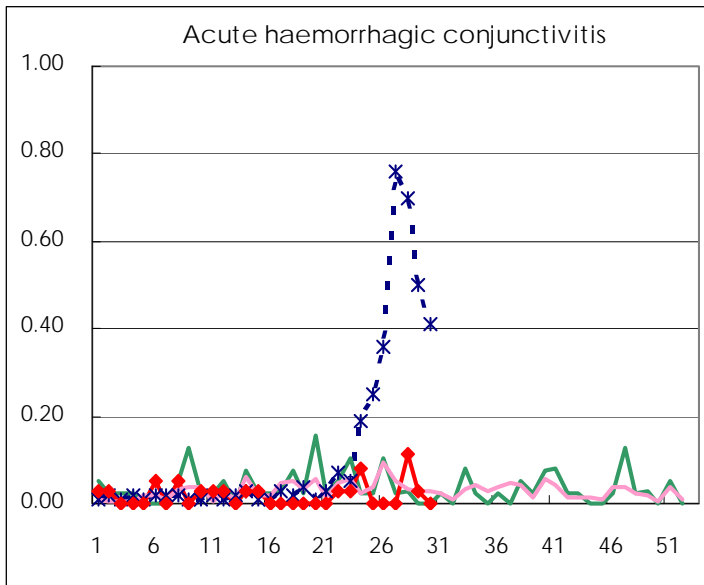
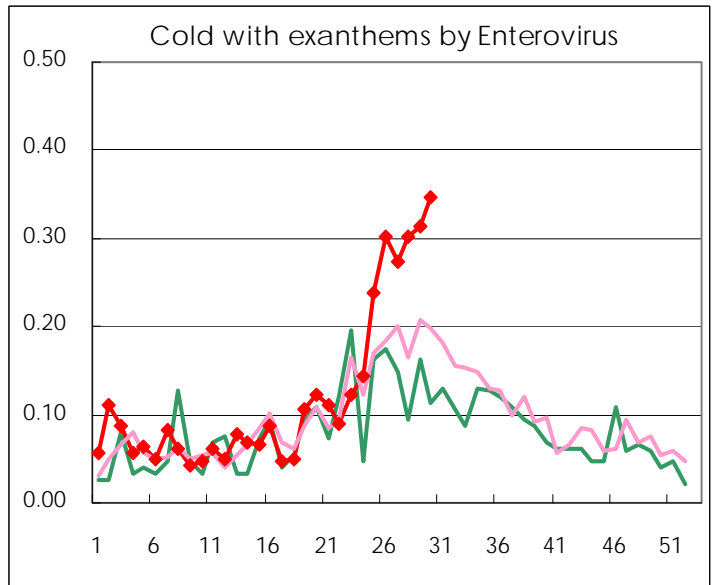
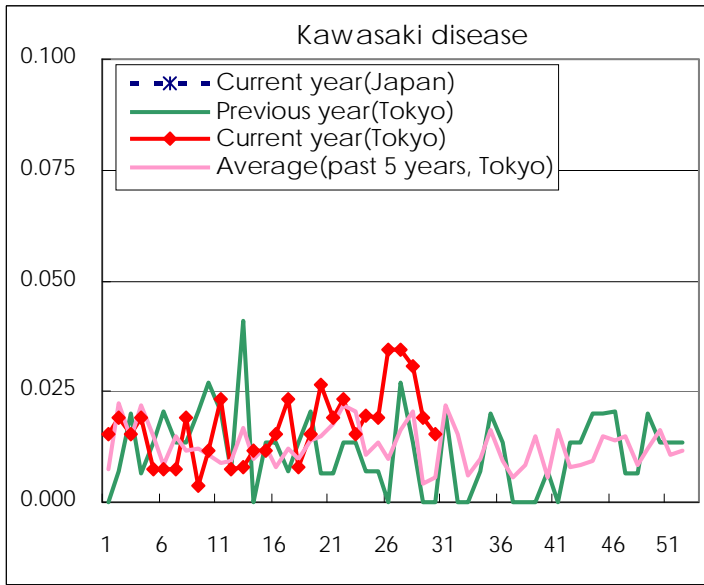
Diseases	2011				
	27th	28th	29th	30th	/sentinel
Respiratory syncytial virus infection	24	42	46	62	0.24
Pharyngoconjunctival fever	200	264	212	180	0.69
Group A streptococcal pharyngitis	439	417	302	303	1.17
Infectious gastroenteritis	1085	1,031	822	928	3.57
Chickenpox	293	272	155	161	0.62
Hand, foot, and mouth disease	1,325	2,177	2,497	2,873	11.05
Erythema infectiosum	232	195	94	131	0.50
Exanthem subitum	183	200	208	188	0.72
Pertussis	6	13	7	6	0.02
Herpangina	885	1,787	1,796	2,100	8.08
Mumps	145	109	115	94	0.36
Kawasaki disease	9	8	5	4	0.02
Cold with exanthems by Enterovirus	72	79	82	90	0.35
Influenza	15	3	3	3	0.01
Acute hemorrhagic conjunctivitis		4	1		
Epidemic keratoconjunctivitis	12	20	23	14	0.37
Bacterial meningitis		2	2	1	0.04
Aseptic meningitis		1		5	0.21
Mycoplasma pneumonia	15	16	14	22	0.92
Chlamydial pneumonia (excluding psittacosis)					

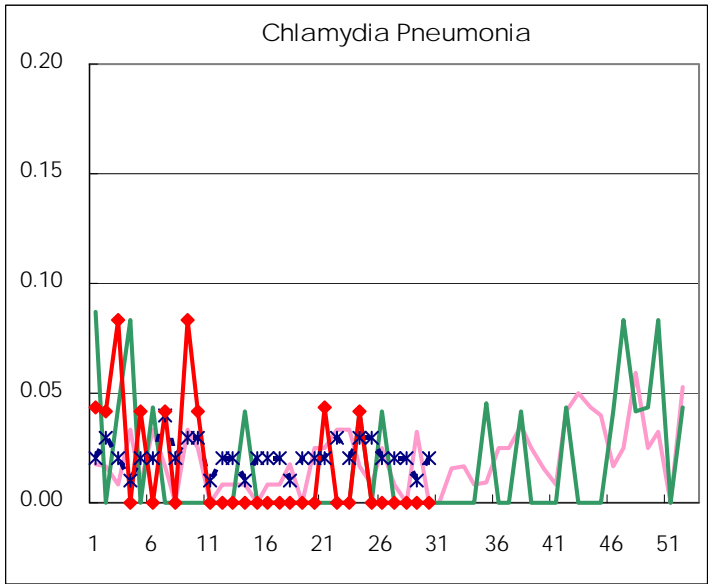
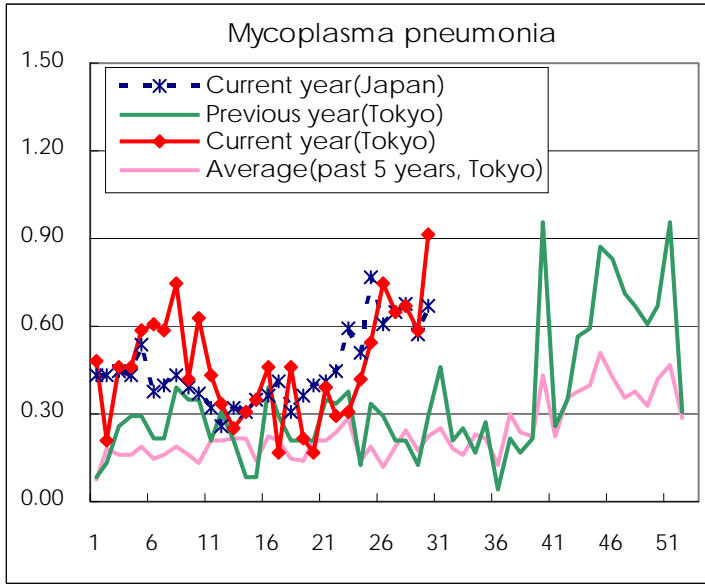
(Blank means 0.)

Disease Trend Graph (weekly reported cases per sentinel in comparison)









Number of sentinel facilities for weekly reporting		
Types of sentinels	Number of sentinels	Sentinels having reported
Pediatric	264	260
Influenza	419	413
Ophthalmic	39	38
Specially-designated	25	24

Tokyo Metropolitan Government
Infectious Disease Surveillance Center