
INFECTIOUS DISEASES WEEKLY REPORT

TOKYO IDWR

Tokyo Metropolitan Infectious Disease Surveillance Center

11 August 2011 / Number 31

Surveillance System in Tokyo, Japan

The infectious diseases which all physicians must report

All physicians must report to health centers the incidence of the diseases which are shown at page one. Health centers electronically report the individual cases to Tokyo Metropolitan Infectious Disease Surveillance Center.

The infectious diseases required to be reported by the sentinels

The numbers of patients who visit the sentinel clinics or hospitals during a week are reported to health centers in Tokyo. And they electronically report the numbers to Tokyo Metropolitan Infectious Disease Surveillance Center. We have about 500 sentinel clinics and hospitals in Tokyo.

1st Week is early January and 52nd Week is end of December.

Tokyo Metropolitan Institute of Public Health
Epidemiological Information Office

TEL:81-3-3363-3213 FAX:81-3-5332-7365

e-mail:idsc@tokyo-eiken.go.jp

URL:idsc.tokyo-eiken.go.jp/

Number of patients with the diseases which all physicians must report

Category	Diseases	Tokyo				Japan		
		28th	29th	30th	31st	Cum 2011	31st	Cum 2011
I	Ebola hemorrhagic fever							
	Crimean-Congo hemorrhagic fever							
	Smallpox							
	South American hemorrhagic fever							
	Plague							
	Marburg disease							
	Lassa fever							
II	Acute poliomyelitis					1		1
	Tuberculosis	110	82	80	56	2,807	380	17,689
	Diphtheria							
	Severe Acute Respiratory Syndrome(SARS)							
	Avian influenza H5N1							
III	Cholera						2	5
	Shigellosis	1	2	4	2	37	5	119
	Enterohemorrhagic Escherichia coli infection	6	22	16	30	136	250	2,084
	Typhoid fever		1			3		13
	Paratyphoid fever		1			9		16
IV	Hepatitis E					6		39
	West Nile fever							
	Hepatitis A	1				21	1	140
	Echinococcosis					1		12
	Yellow fever							
	Psittacosis				1	3		11
	Omsk hemorrhagic fever							
	Relapsing fever							
	Kyasanur forest disease							
	Q fever							
	Rabies							
	Coccidioidomycosis					2		2
	Monkeypox							
	Hemorrhagic fever with renal syndrome							
	Western equine encephalitis							
	Tick-borne encephalitis							
	Anthrax							
	Chikungunya fever							5
	Scrub typhus(Tsutsugamushi disease)					8	1	158
	Dengue fever					13	3	55
	Eastern equine encephalitis							
	Avian influenza (excluding H5N1)							
	Nipah virus infection							
	Japanese spotted fever					1	5	53
	Japanese encephalitis					1		2
	Hantavirus pulmonary syndrome							
	Herpes B virus infection							
	Glanders							
	Brucellosis							
	Venezuelan equine encephalitis							
	Hendra virus infection							
Epidemic typhus								
Botulism							3	
Malaria	1			2	14	2	39	
Tularemia								
Lyme disease				1	3	1	5	
Lyssavirus infection(excluding rabies)								
Rift valley fever								
Melioidosis								
Legionellosis	2	1	1	3	35	18	421	
Leptospirosis					3		5	
Rocky mountain spotted fever								

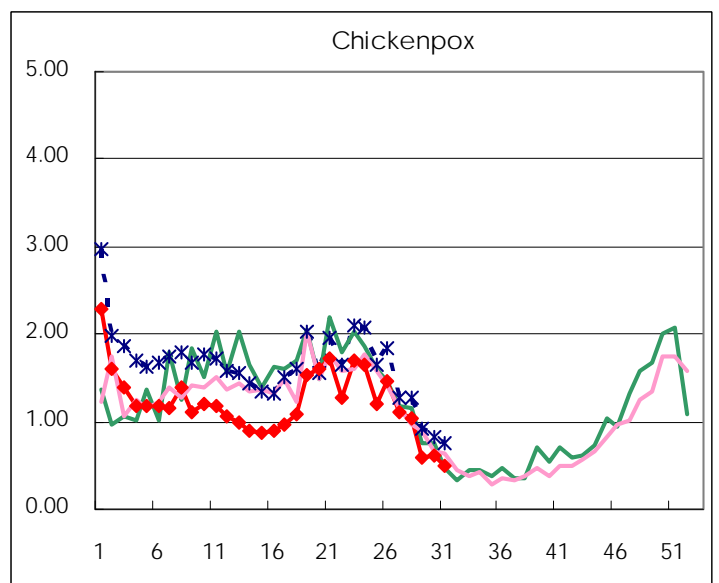
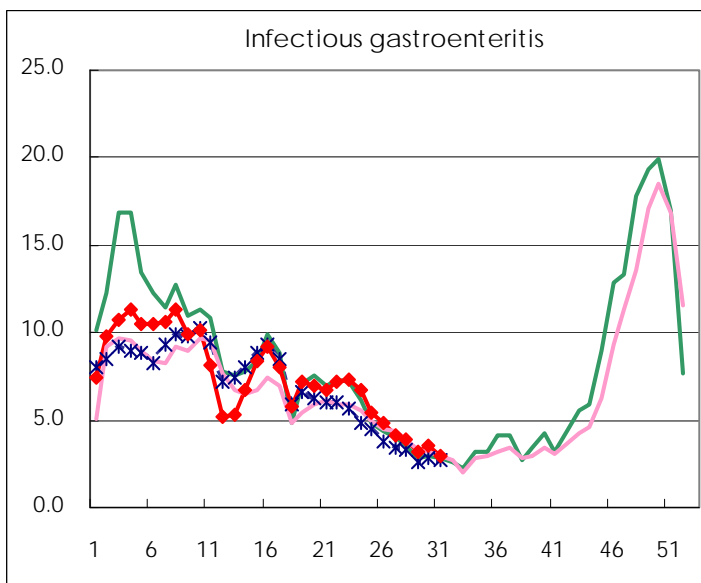
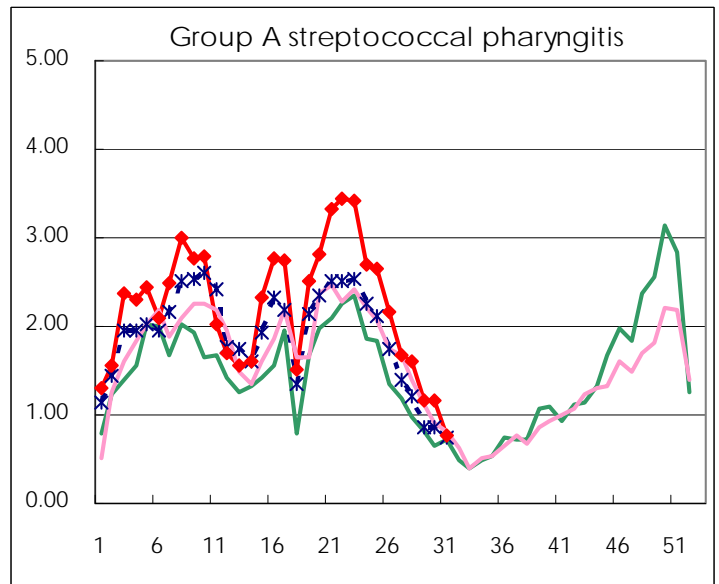
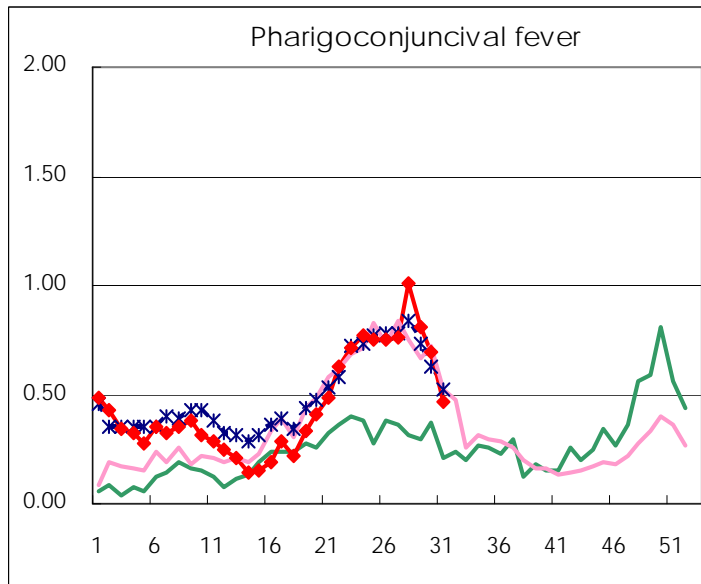
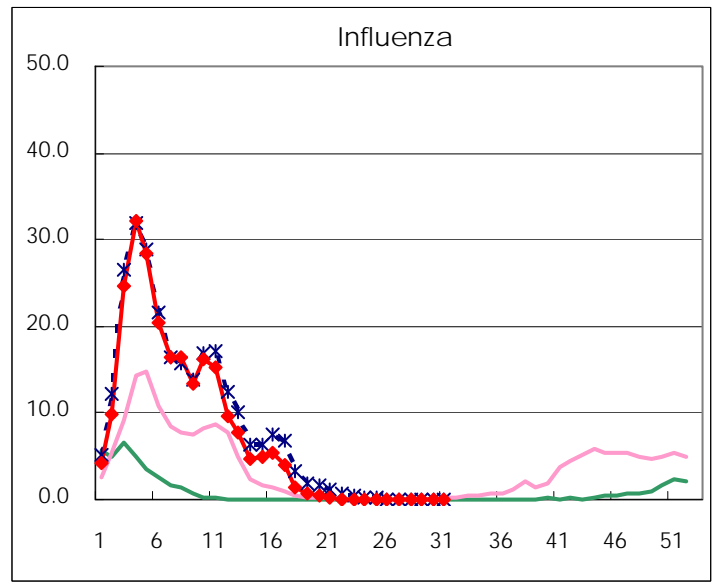
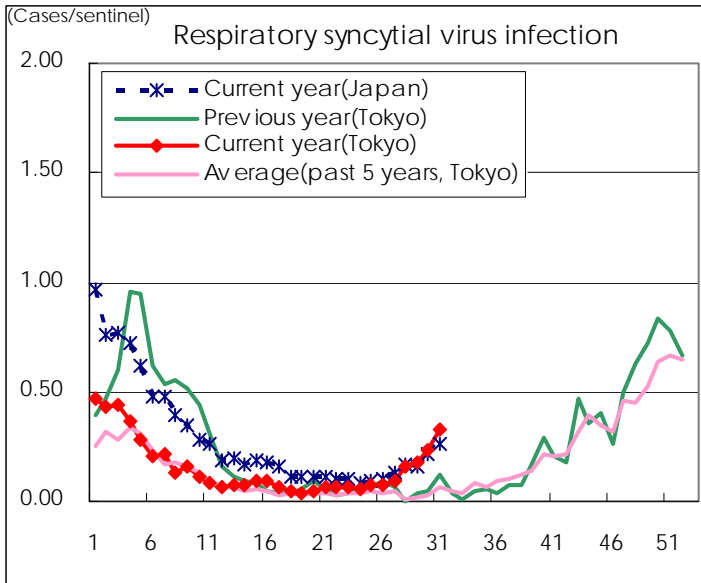
Category	Diseases	Tokyo				Japan		
		28th	29th	30th	31st	Cum 2011	31st	Cum 2011
V	Amebiasis	4	1	2	7	99	10	463
	Viral hepatitis(excluding hepatitis A and E)	1			1	26		157
	Acute encephalitis(excluding JE and WNE)		1		1	11	1	184
	Cryptosporidiosis					2		6
	Creutzfeldt-Jakob disease	1				10	2	70
	Severe invasive streptococcal infections(TSLS)		2	1		23	3	143
	Acquired immunodeficiency syndrome (AIDS)	8	8	8	9	242	13	846
	Giardiasis					7		41
	Meningococcal meningitis					2		7
	Congenital rubella syndrome							1
	Syphilis	6	5	4	6	131	14	454
	Tetanus				1	6	1	67
	Vancomycin-resistant S. aureus infection							
	Vancomycin-resistant Enterococcus infection					1	1	33
	Rubella	4		1	1	24	6	278
	Measles	2	1	1	1	158	5	381

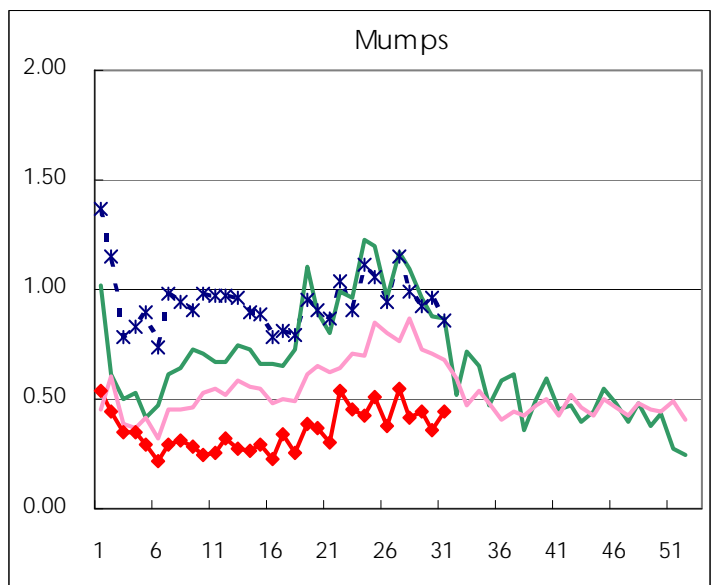
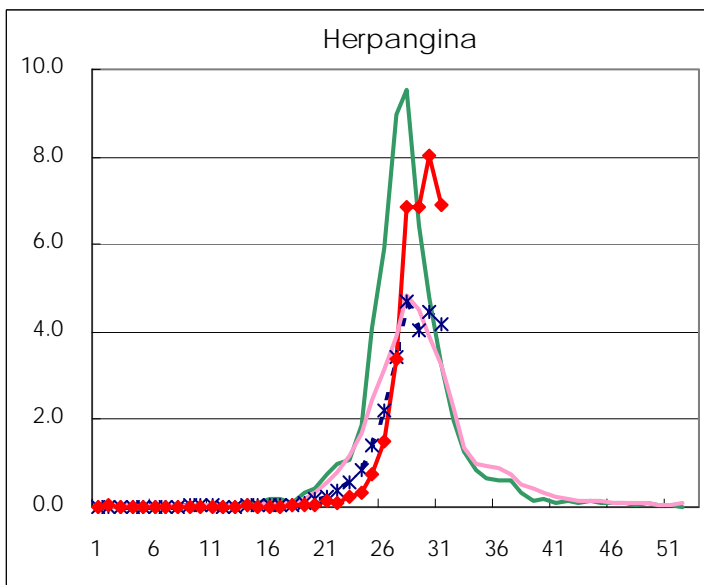
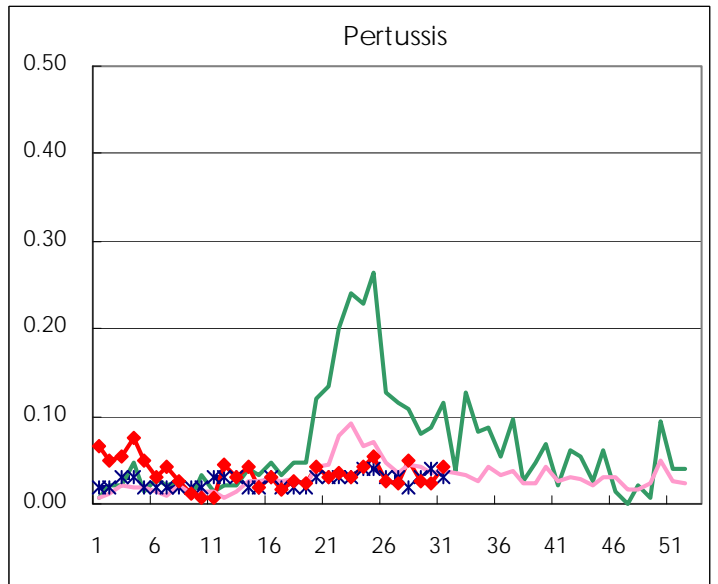
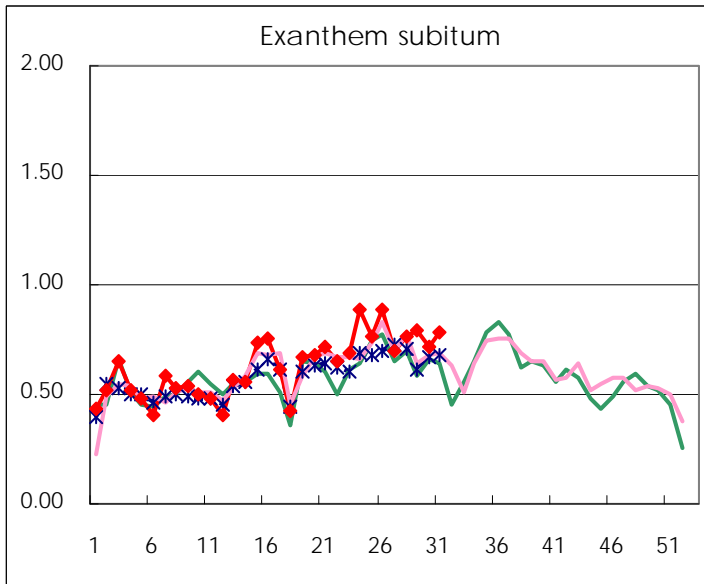
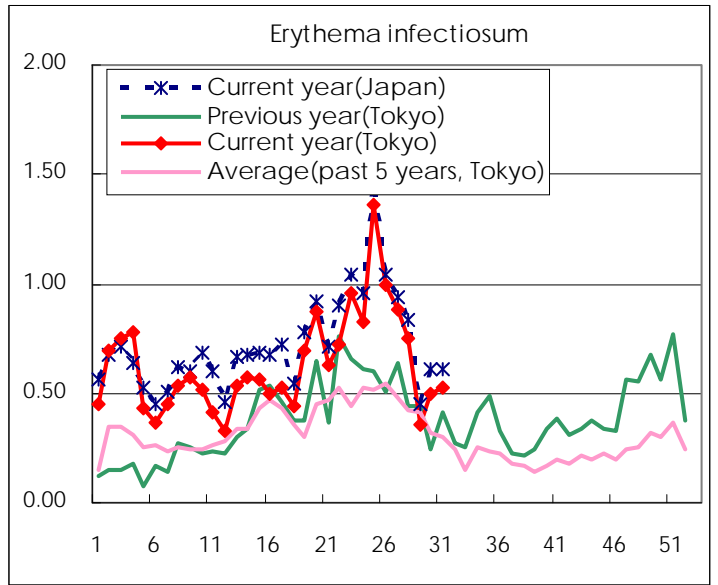
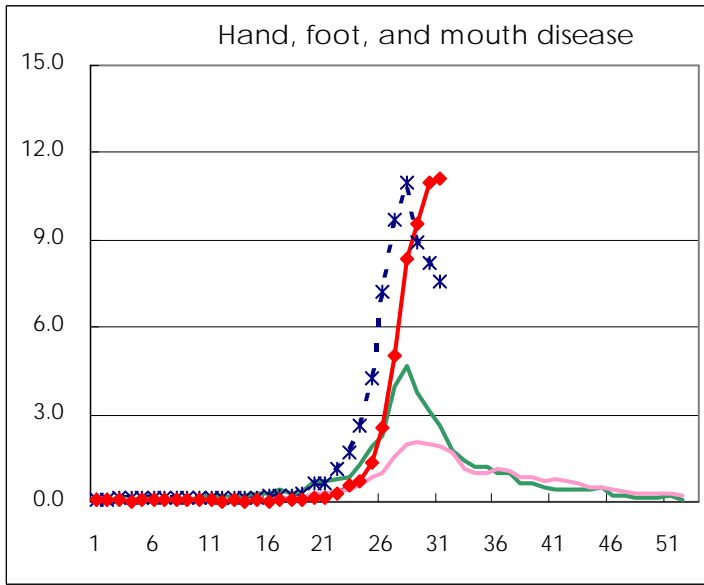
Number of patients with the diseases to be reported
by the designated clinics and hospitals

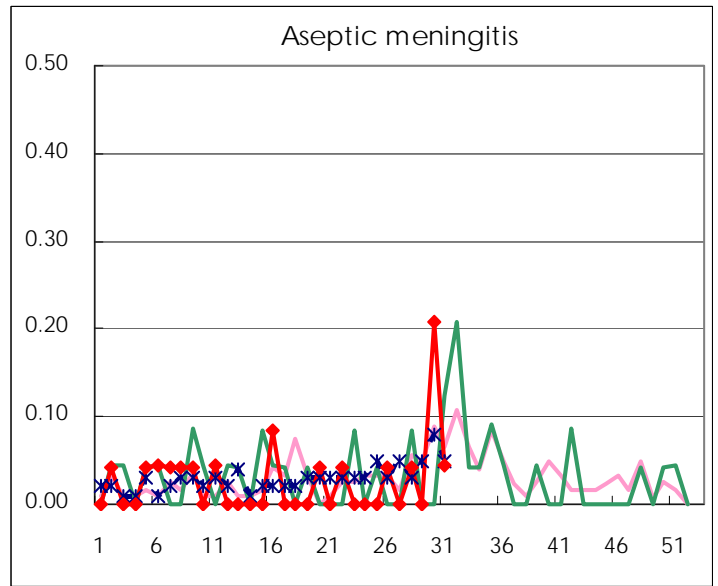
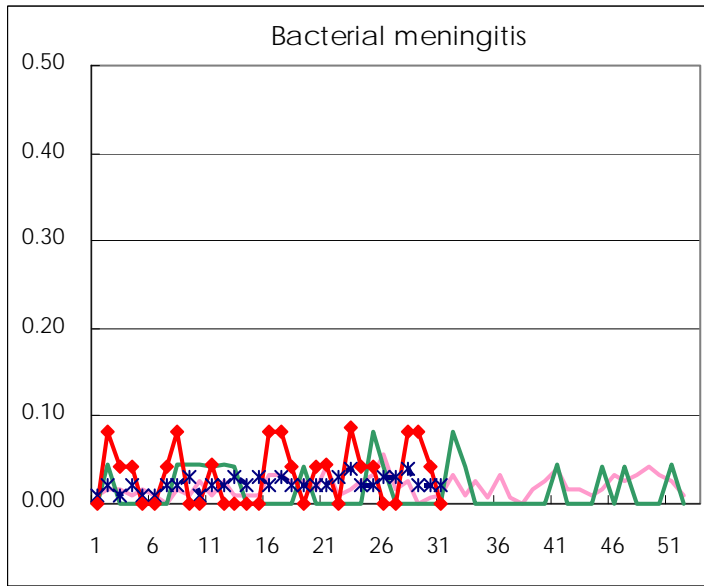
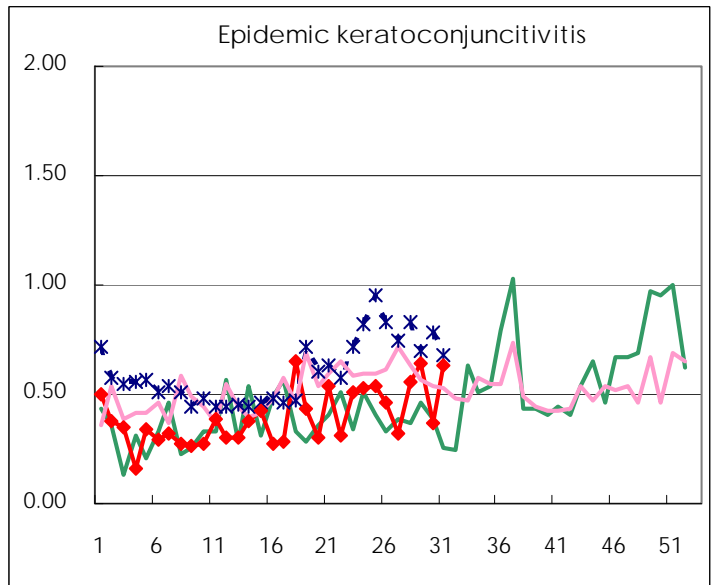
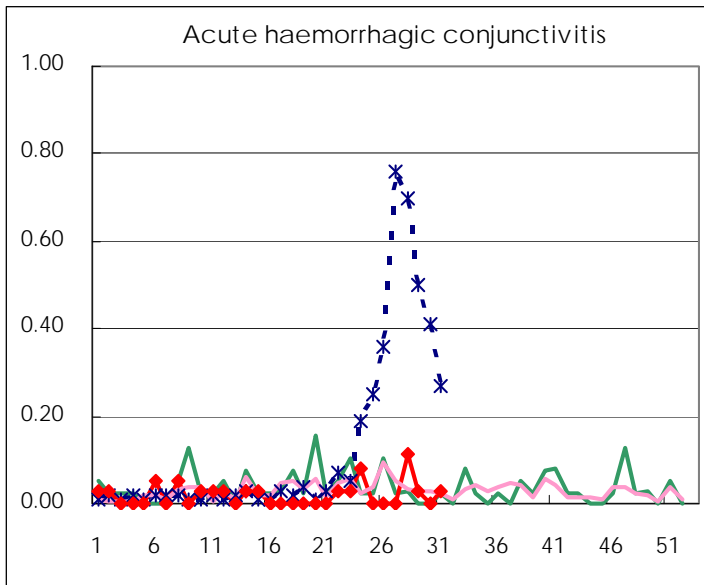
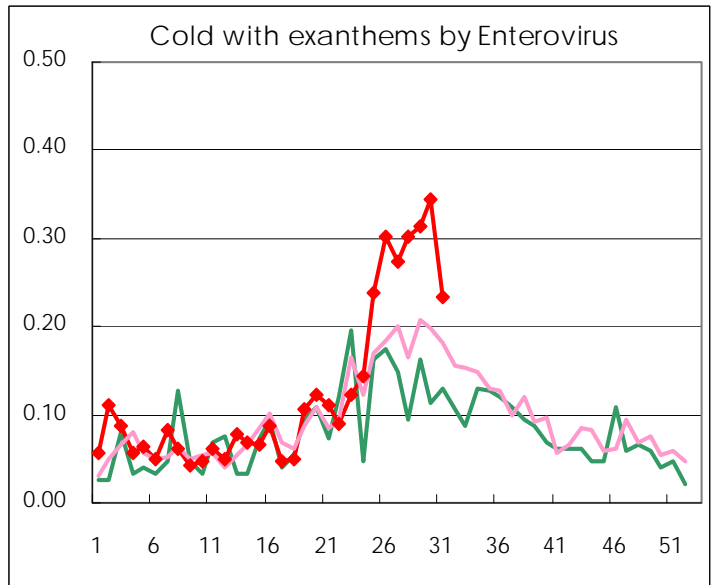
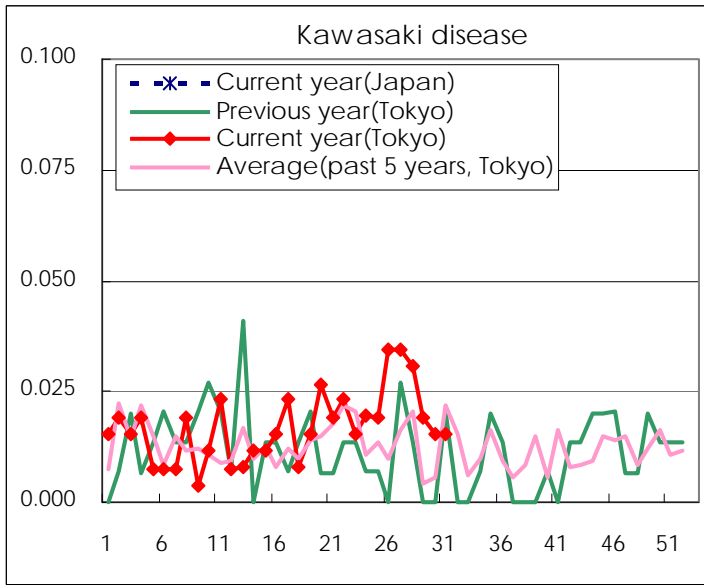
Diseases	2011				
	28th	29th	30th	31st	/sentinel
Respiratory syncytial virus infection	42	46	62	84	0.33
Pharyngoconjunctival fever	264	212	182	120	0.47
Group A streptococcal pharyngitis	417	302	303	199	0.77
Infectious gastroenteritis	1031	822	928	765	2.98
Chickenpox	272	155	161	130	0.51
Hand, foot, and mouth disease	2,177	2,497	2,878	2,846	11.07
Erythema infectiosum	195	94	131	136	0.53
Exanthem subitum	200	208	189	201	0.78
Pertussis	13	7	6	11	0.04
Herpangina	1,787	1,796	2,104	1,772	6.89
Mumps	109	115	94	115	0.45
Kawasaki disease	8	5	4	4	0.02
Cold with exanthems by Enterovirus	79	82	90	60	0.23
Influenza	3	3	3	7	0.02
Acute hemorrhagic conjunctivitis	4	1		1	0.03
Epidemic keratoconjunctivitis	20	23	14	24	0.63
Bacterial meningitis	2	2	1		
Aseptic meningitis	1		5	1	0.04
Mycoplasma pneumonia	16	14	22	15	0.65
Chlamydial pneumonia (excluding psittacosis)					

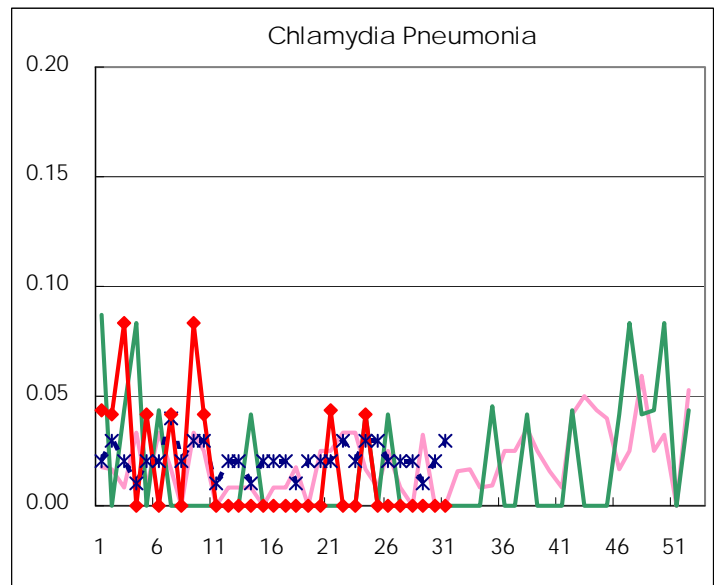
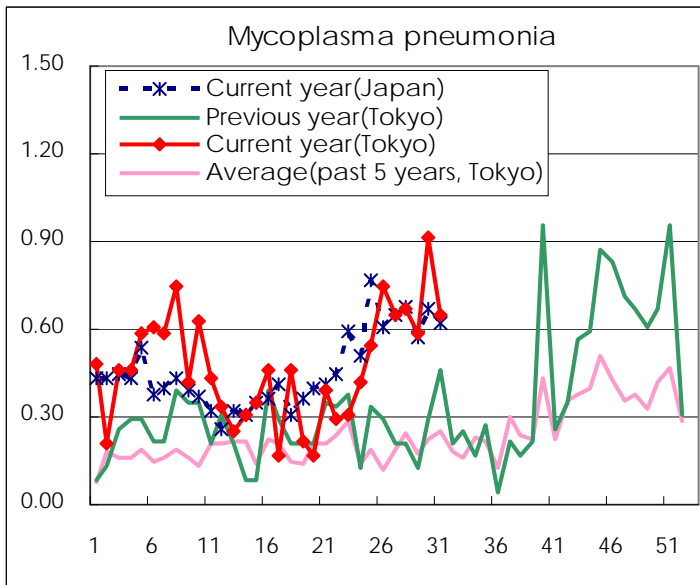
(Blank means 0.)

Disease Trend Graph (weekly reported cases per sentinel in comparison)









Number of sentinel facilities for weekly reporting		
Types of sentinels	Number of sentinels	Sentinels having reported
Pediatric	264	257
Influenza	419	408
Ophthalmic	39	38
Specially-designated	25	23

Tokyo Metropolitan Government
Infectious Disease Surveillance Center