
INFECTIOUS DISEASES WEEKLY REPORT

TOKYO IDWR

Tokyo Metropolitan Infectious Disease Surveillance Center

18 August 2011 / Number 32

Surveillance System in Tokyo, Japan

The infectious diseases which all physicians must report

All physicians must report to health centers the incidence of the diseases which are shown at page one. Health centers electronically report the individual cases to Tokyo Metropolitan Infectious Disease Surveillance Center.

The infectious diseases required to be reported by the sentinels

The numbers of patients who visit the sentinel clinics or hospitals during a week are reported to health centers in Tokyo. And they electronically report the numbers to Tokyo Metropolitan Infectious Disease Surveillance Center. We have about 500 sentinel clinics and hospitals in Tokyo.

1st Week is early January and 52nd Week is end of December.

Tokyo Metropolitan Institute of Public Health
Epidemiological Information Office

TEL:81-3-3363-3213 FAX:81-3-5332-7365

e-mail:idsc@tokyo-eiken.go.jp

URL:idsc.tokyo-eiken.go.jp/

Number of patients with the diseases which all physicians must report

Category	Diseases	Tokyo				Japan		
		29th	30th	31st	32nd	Cum 2011	32nd	Cum 2011
I	Ebola hemorrhagic fever							
	Crimean-Congo hemorrhagic fever							
	Smallpox							
	South American hemorrhagic fever							
	Plague							
	Marburg disease							
	Lassa fever							
II	Acute poliomyelitis					1		1
	Tuberculosis	85	90	75	58	2,919	346	18,258
	Diphtheria							
	Severe Acute Respiratory Syndrome(SARS)							
	Avian influenza H5N1							
III	Cholera				1	1	1	5
	Shigellosis	2	4	2	1	38	4	122
	Enterohemorrhagic Escherichia coli infection	22	16	30	11	147	200	2,342
	Typhoid fever	1				3	1	14
	Paratyphoid fever	1				9	1	17
IV	Hepatitis E				1	7		39
	West Nile fever							
	Hepatitis A					21	1	141
	Echinococcosis					1		12
	Yellow fever							
	Psittacosis			1		3		11
	Omsk hemorrhagic fever							
	Relapsing fever							
	Kyasanur forest disease							
	Q fever							
	Rabies							
	Coccidioidomycosis					2		2
	Monkeypox							
	Hemorrhagic fever with renal syndrome							
	Western equine encephalitis							
	Tick-borne encephalitis							
	Anthrax							
	Chikungunya fever							5
	Scrub typhus(Tsutsugamushi disease)					8	2	160
	Dengue fever				1	14	1	56
	Eastern equine encephalitis							
	Avian influenza (excluding H5N1)							
	Nipah virus infection							
	Japanese spotted fever					1		56
	Japanese encephalitis					1		2
	Hantavirus pulmonary syndrome							
	Herpes B virus infection							
	Glanders							
	Brucellosis							
	Venezuelan equine encephalitis							
	Hendra virus infection							
Epidemic typhus								
Botulism							3	
Malaria			2	2	16	3	43	
Tularemia								
Lyme disease			1		3		5	
Lyssavirus infection(excluding rabies)								
Rift valley fever								
Melioidosis						1	1	
Legionellosis	1	1	3	1	36	5	427	
Leptospirosis					3	1	6	
Rocky mountain spotted fever								

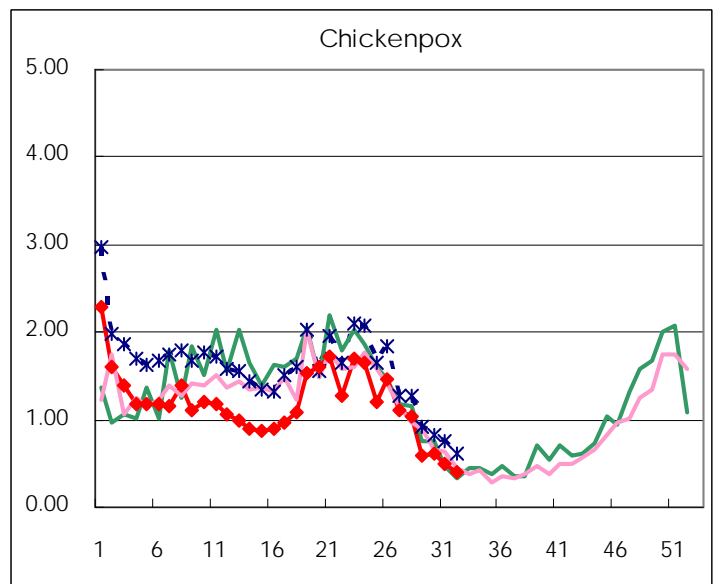
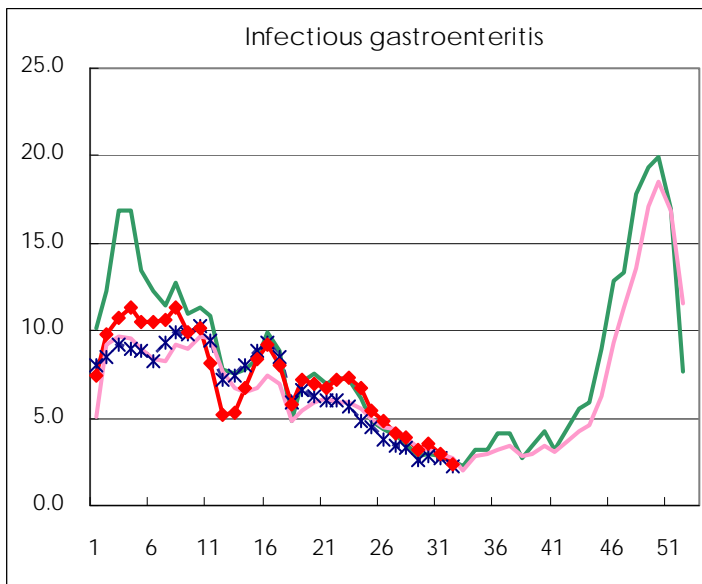
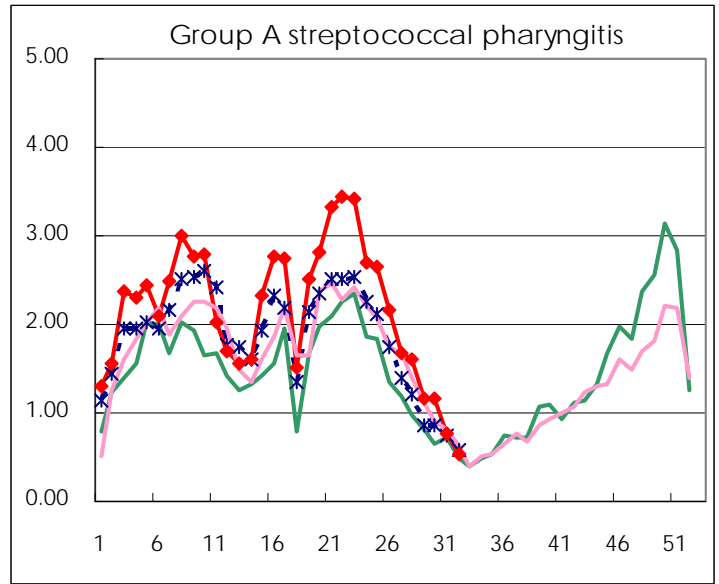
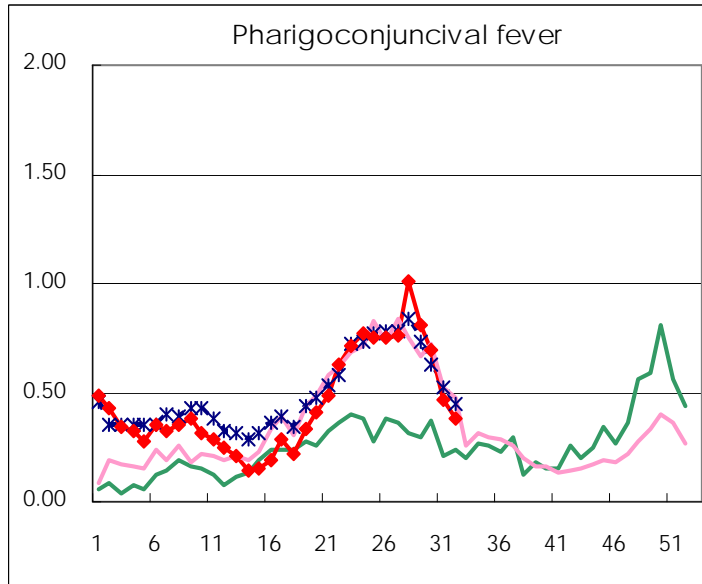
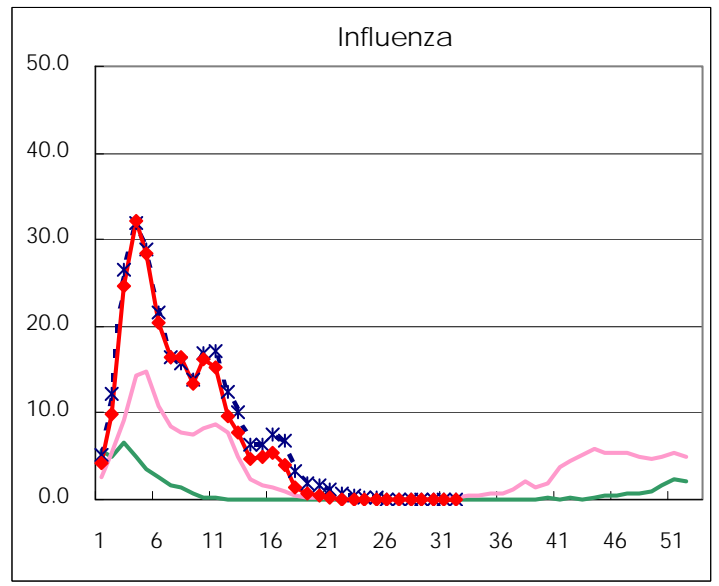
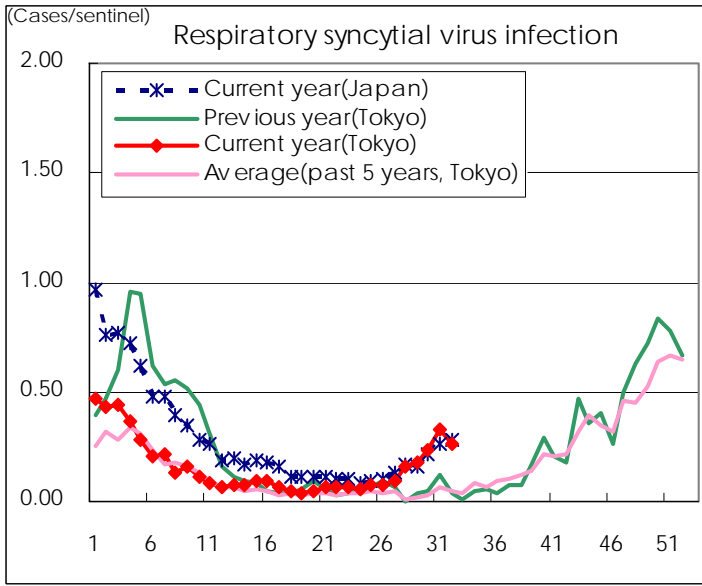
Category	Diseases	Tokyo					Japan	
		29th	30th	31st	32nd	Cum 2011	32nd	Cum 2011
V	Amebiasis	1	2	7	7	106	13	487
	Viral hepatitis(excluding hepatitis A and E)			1	1	27	1	159
	Acute encephalitis(excluding JE and WNE)	1		1	1	12	2	188
	Cryptosporidiosis					2		6
	Creutzfeldt-Jakob disease				1	11	2	75
	Severe invasive streptococcal infections(TSLS)	2	1			23	1	146
	Acquired immunodeficiency syndrome (AIDS)	8	8	9	3	245	8	868
	Giardiasis					7		42
	Meningococcal meningitis					2		7
	Congenital rubella syndrome							1
	Syphilis	5	4	6	5	136	7	459
	Tetanus			1		6		69
	Vancomycin-resistant S. aureus infection							
	Vancomycin-resistant Enterococcus infection					1		32
	Rubella		1	1	1	25	4	285
	Measles	1	1	1	1	158	7	391

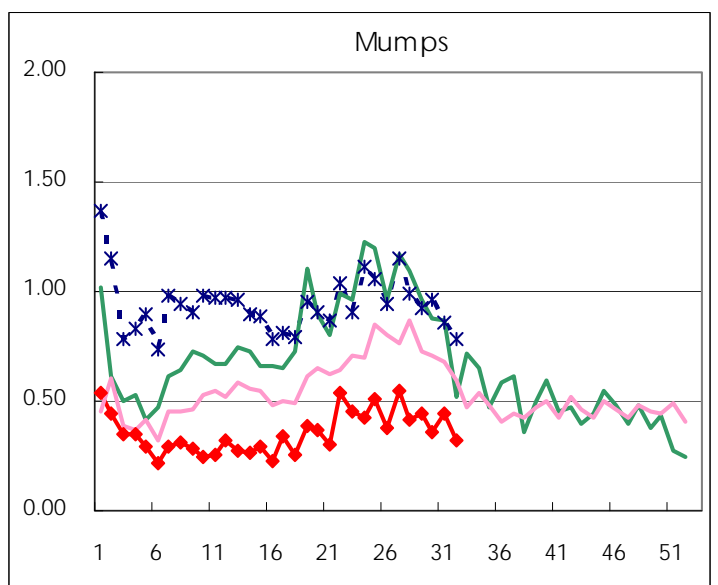
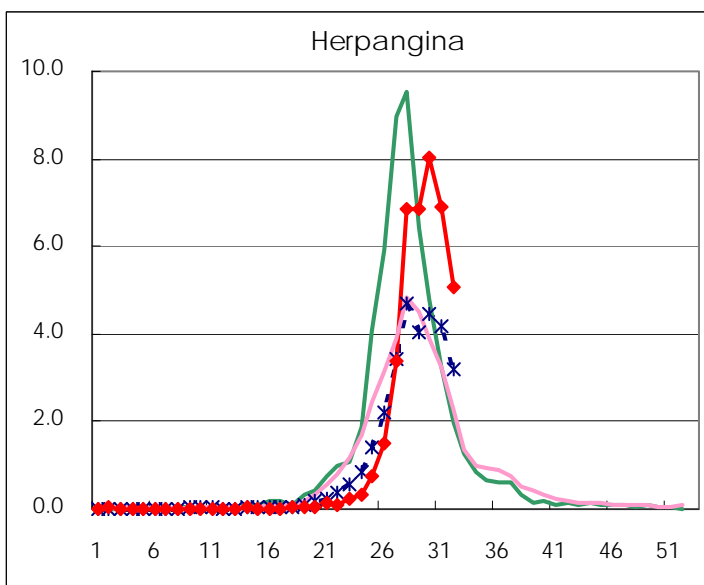
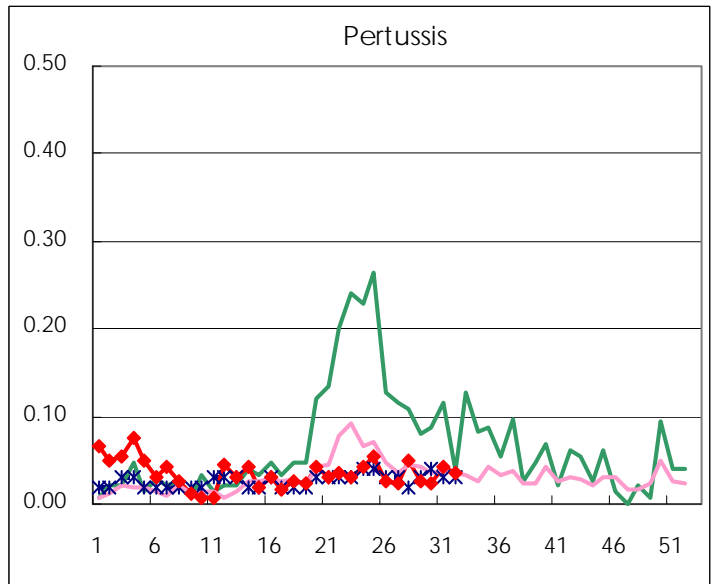
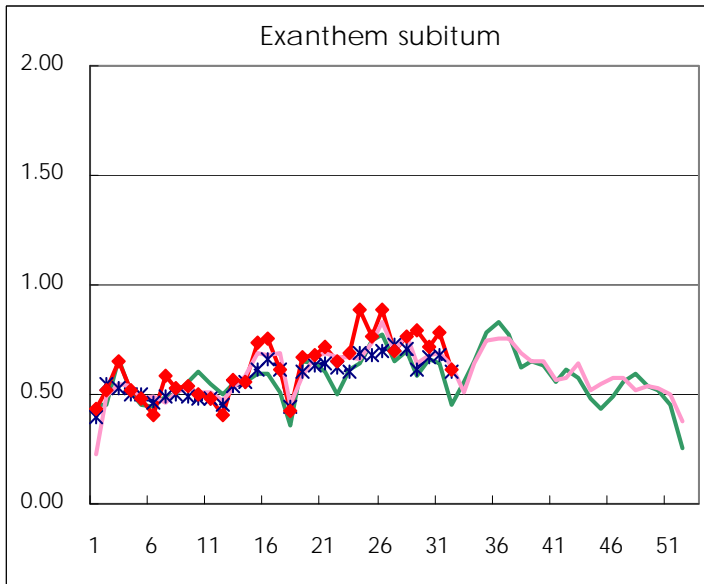
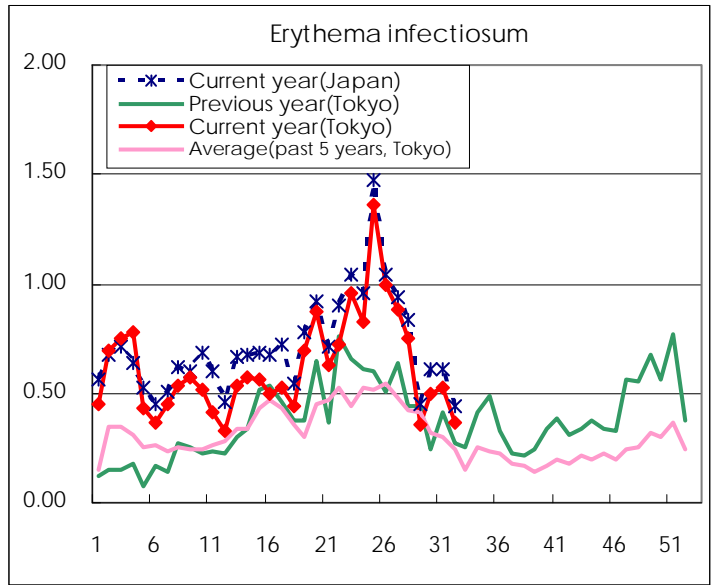
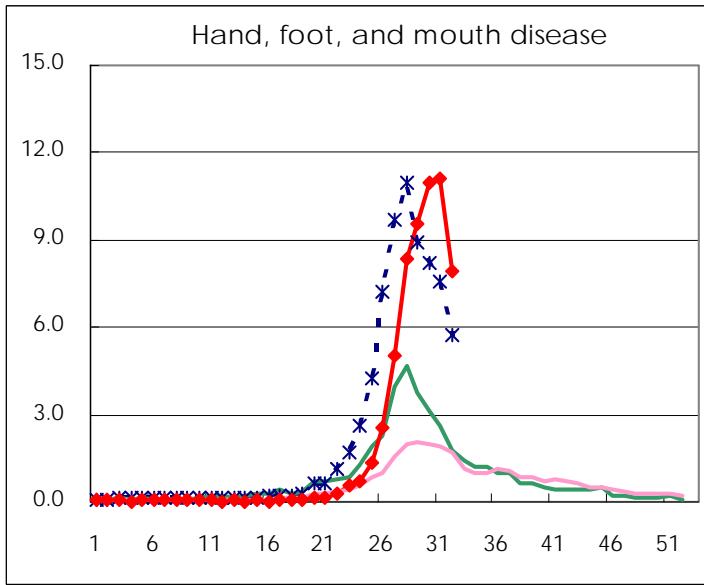
Number of patients with the diseases to be reported
by the designated clinics and hospitals

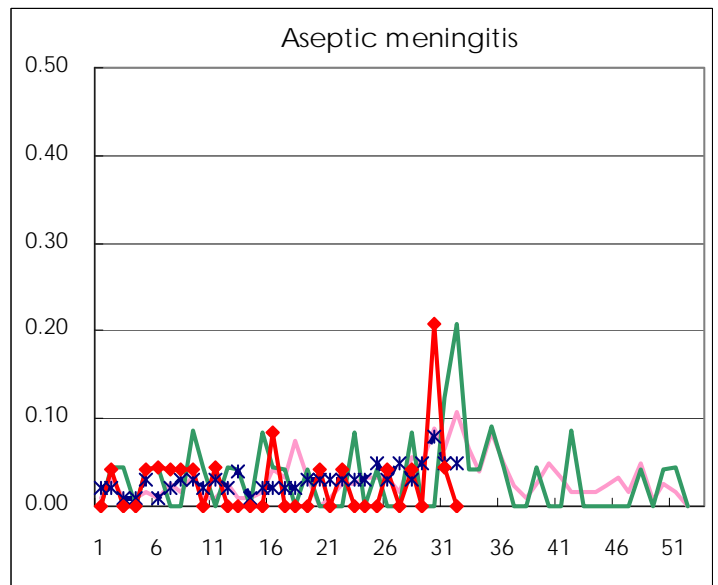
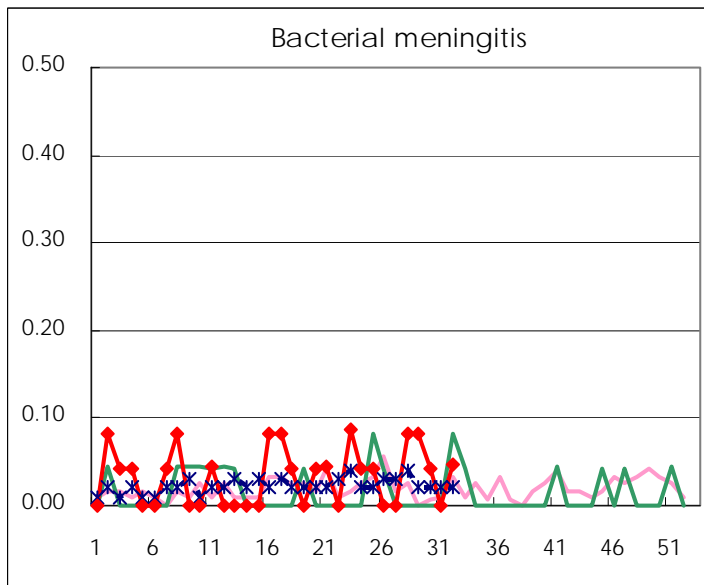
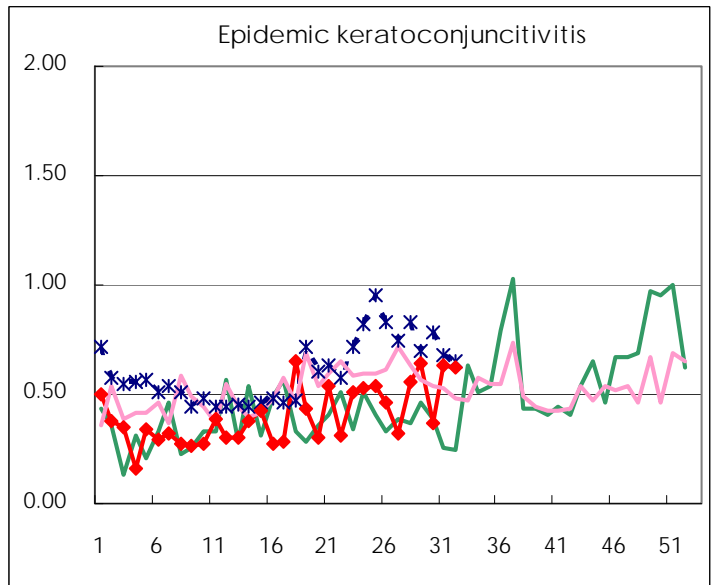
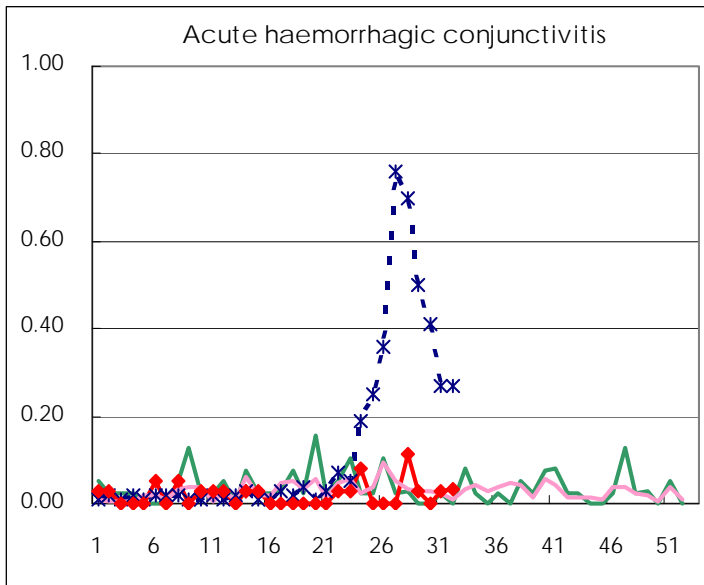
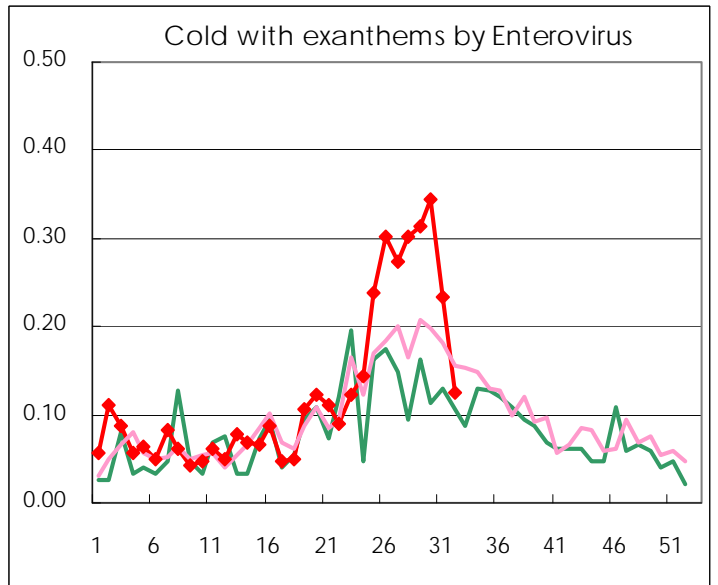
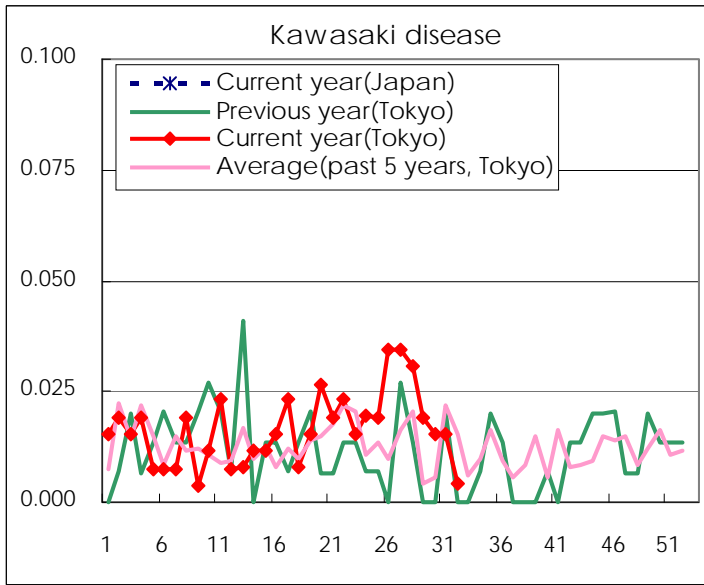
Diseases	2011				
	29th	30th	31st	32nd	/sentinel
Respiratory syncytial virus infection	46	62	84	61	0.26
Pharyngoconjunctival fever	212	182	120	89	0.38
Group A streptococcal pharyngitis	302	303	199	125	0.54
Infectious gastroenteritis	822	928	765	550	2.37
Chickenpox	155	161	130	95	0.41
Hand, foot, and mouth disease	2,497	2,878	2,846	1,836	7.91
Erythema infectiosum	94	131	136	86	0.37
Exanthem subitum	208	189	201	142	0.61
Pertussis	7	6	11	8	0.03
Herpangina	1,796	2,104	1,772	1,171	5.05
Mumps	115	94	115	74	0.32
Kawasaki disease	5	4	4	1	0.004
Cold with exanthems by Enterovirus	82	90	60	29	0.13
Influenza	3	3	7	6	0.02
Acute hemorrhagic conjunctivitis	1		1	1	0.03
Epidemic keratoconjunctivitis	23	14	24	20	0.63
Bacterial meningitis	2	1		1	0.05
Aseptic meningitis		5	1		
Mycoplasma pneumonia	14	22	15	19	0.90
Chlamydial pneumonia (excluding psittacosis)					

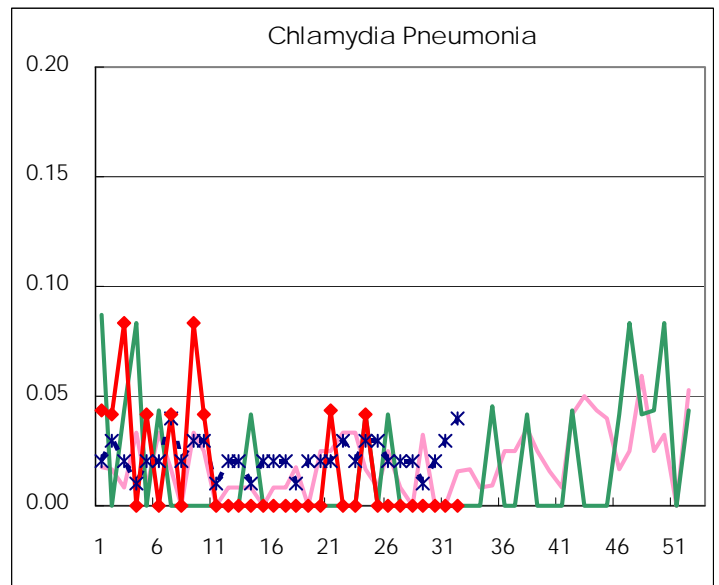
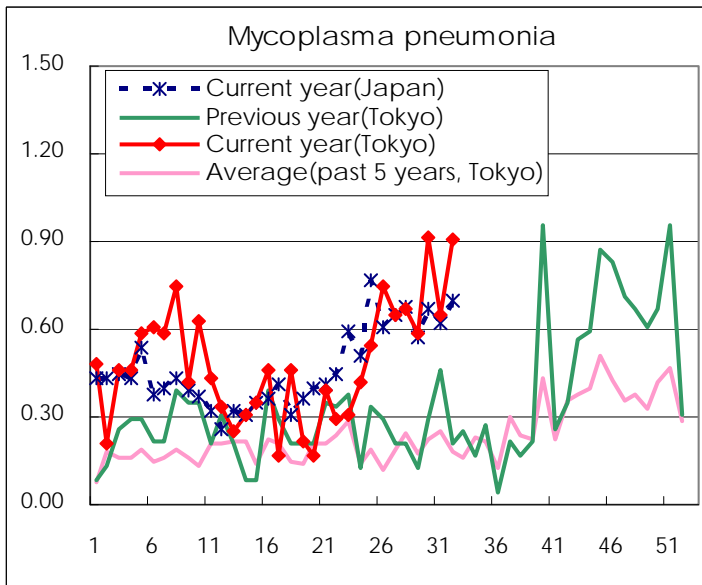
(Blank means 0.)

Disease Trend Graph (weekly reported cases per sentinel in comparison)









Number of sentinel facilities for weekly reporting		
Types of sentinels	Number of sentinels	Sentinels having reported
Pediatric	264	232
Influenza	419	359
Ophthalmic	39	32
Specially-designated	25	21

Tokyo Metropolitan Government
Infectious Disease Surveillance Center