
INFECTIOUS DISEASES WEEKLY REPORT

TOKYO IDWR

Tokyo Metropolitan Infectious Disease Surveillance Center

25 August 2011 / Number 33

Surveillance System in Tokyo, Japan

The infectious diseases which all physicians must report

All physicians must report to health centers the incidence of the diseases which are shown at page one. Health centers electronically report the individual cases to Tokyo Metropolitan Infectious Disease Surveillance Center.

The infectious diseases required to be reported by the sentinels

The numbers of patients who visit the sentinel clinics or hospitals during a week are reported to health centers in Tokyo. And they electronically report the numbers to Tokyo Metropolitan Infectious Disease Surveillance Center. We have about 500 sentinel clinics and hospitals in Tokyo.

1st Week is early January and 52nd Week is end of December.

Tokyo Metropolitan Institute of Public Health
Epidemiological Information Office

TEL:81-3-3363-3213 FAX:81-3-5332-7365

e-mail:idsc@tokyo-eiken.go.jp

URL:idsc.tokyo-eiken.go.jp/

Number of patients with the diseases which all physicians must report

Category	Diseases	Tokyo				Japan		
		30th	31st	32nd	33rd	Cum 2011	33rd	Cum 2011
I	Ebola hemorrhagic fever							
	Crimean-Congo hemorrhagic fever							
	Smallpox							
	South American hemorrhagic fever							
	Plague							
	Marburg disease							
	Lassa fever							
II	Acute poliomyelitis					1		1
	Tuberculosis	91	78	72	55	3,017	327	18,925
	Diphtheria							
	Severe Acute Respiratory Syndrome(SARS)							
	Avian influenza H5N1							
III	Cholera			1		1		5
	Shigellosis	4	2	1		38	2	124
	Enterohemorrhagic Escherichia coli infection	16	30	11	9	156	138	2,492
	Typhoid fever					3		14
	Paratyphoid fever					9		17
IV	Hepatitis E			1		7	1	39
	West Nile fever							
	Hepatitis A					21		141
	Echinococcosis					1		12
	Yellow fever							
	Psittacosis		1			3		11
	Omsk hemorrhagic fever							
	Relapsing fever							
	Kyasanur forest disease							
	Q fever							
	Rabies							
	Coccidioidomycosis					2		2
	Monkeypox							
	Hemorrhagic fever with renal syndrome							
	Western equine encephalitis							
	Tick-borne encephalitis							
	Anthrax							
	Chikungunya fever							5
	Scrub typhus(Tsutsugamushi disease)					8	1	162
	Dengue fever			1		14	1	57
	Eastern equine encephalitis							
	Avian influenza (excluding H5N1)							
	Nipah virus infection							
	Japanese spotted fever					1	1	57
	Japanese encephalitis					1		2
	Hantavirus pulmonary syndrome							
	Herpes B virus infection							
	Glanders							
	Brucellosis							
	Venezuelan equine encephalitis							
	Hendra virus infection							
Epidemic typhus								
Botulism							3	
Malaria		2	2			16	1	44
Tularemia								
Lyme disease		1				3		5
Lyssavirus infection(excluding rabies)								
Rift valley fever								
Melioidosis								1
Legionellosis	1	3	1	3	39	11	440	
Leptospirosis					3	1	7	
Rocky mountain spotted fever								

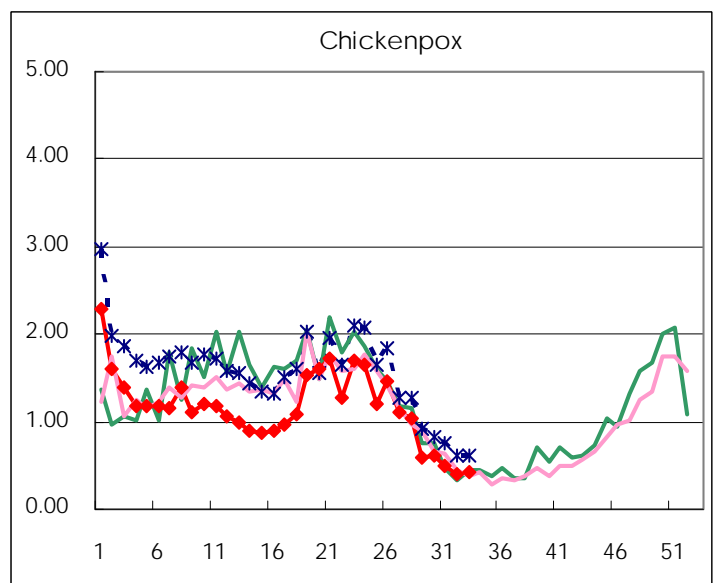
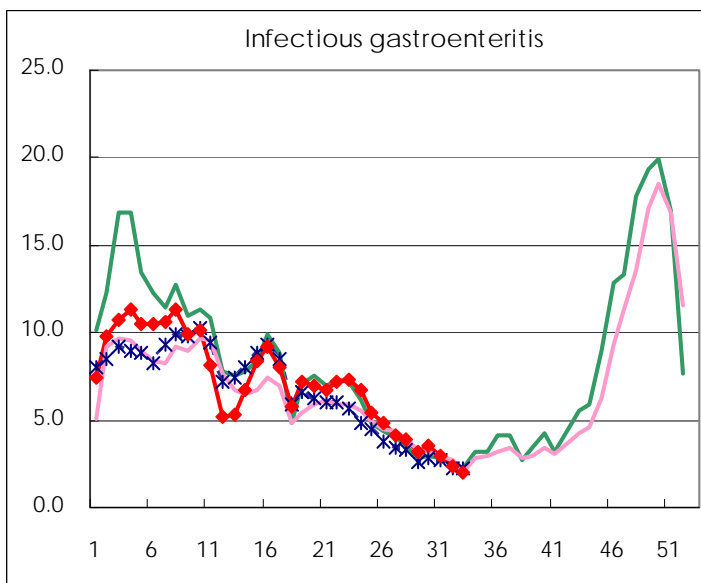
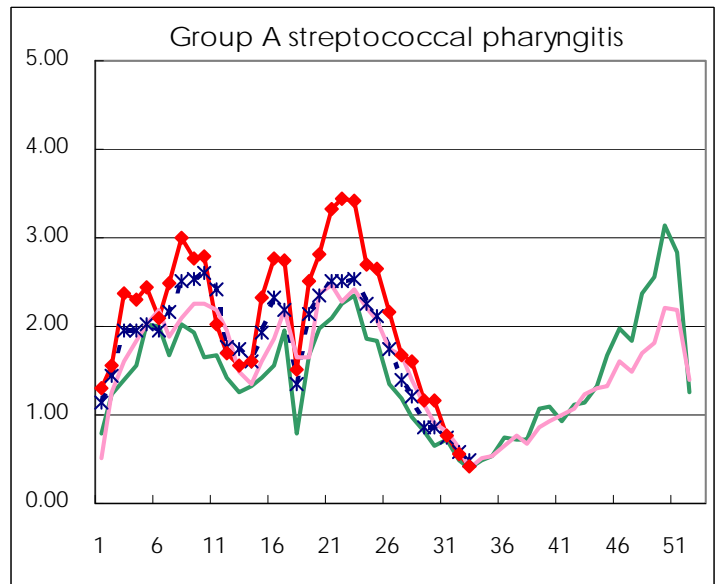
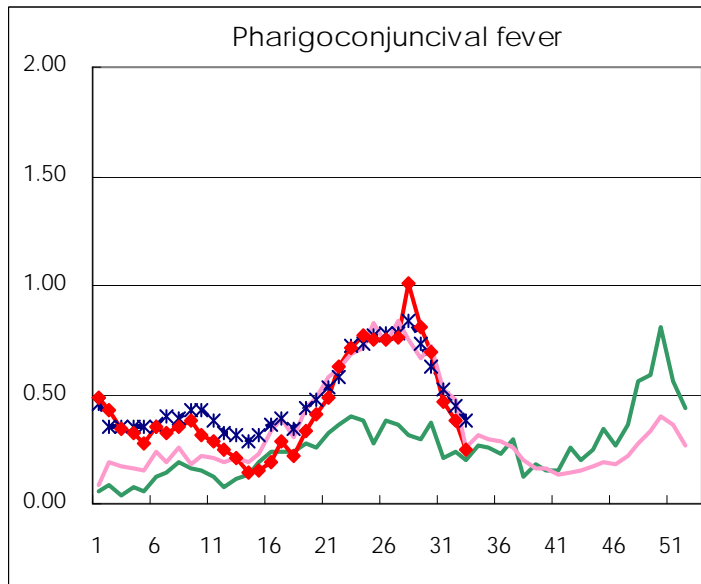
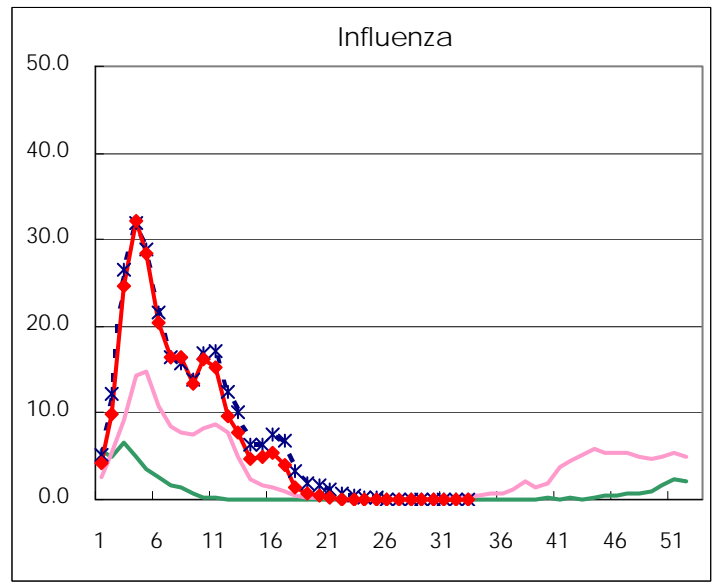
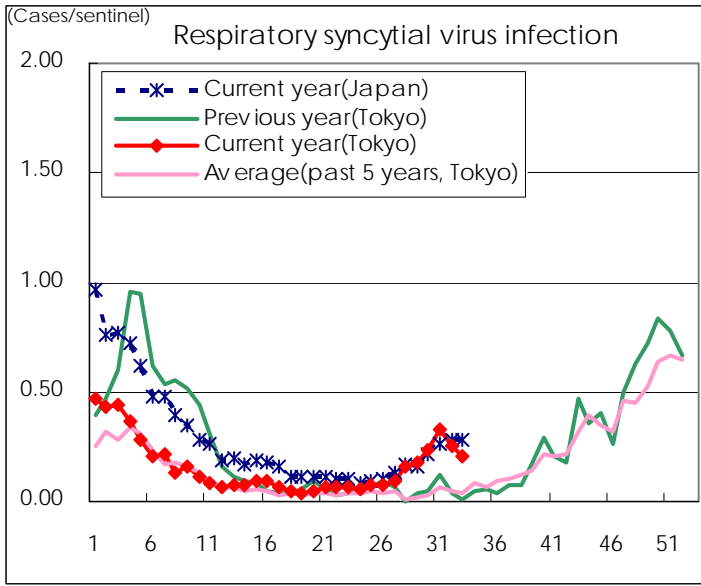
Category	Diseases	Tokyo					Japan	
		30th	31st	32nd	33rd	Cum 2011	33rd	Cum 2011
V	Amebiasis	2	7	7	1	107	1	494
	Viral hepatitis(excluding hepatitis A and E)		1	1		27	4	163
	Acute encephalitis(excluding JE and WNE)		1	1	1	13	3	192
	Cryptosporidiosis					2		6
	Creutzfeldt-Jakob disease			1	1	12		77
	Severe invasive streptococcal infections(TSLS)	1				23	1	148
	Acquired immunodeficiency syndrome (AIDS)	8	9	3	4	249	17	898
	Giardiasis					7	1	43
	Meningococcal meningitis					2		7
	Congenital rubella syndrome							1
	Syphilis	4	6	6	5	142	11	477
	Tetanus		1			6		71
	Vancomycin-resistant S. aureus infection							
	Vancomycin-resistant Enterococcus infection					1	1	35
	Rubella	1	1	1		25	12	297
	Measles	1	1	2		159	2	389

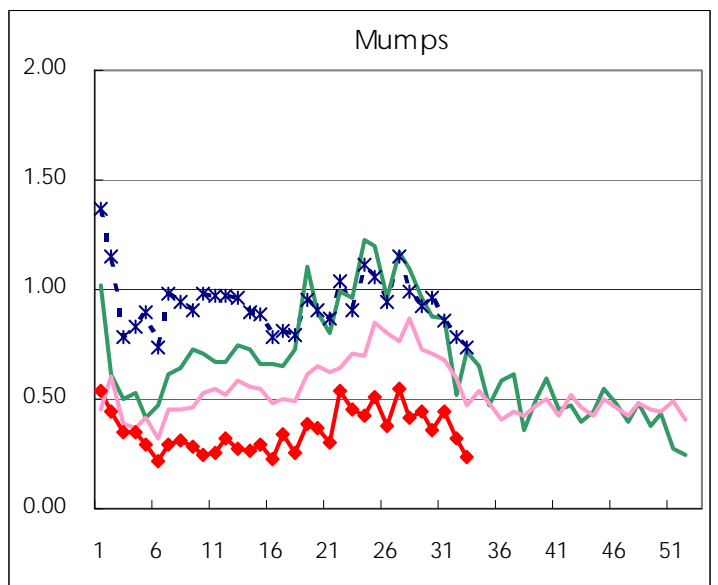
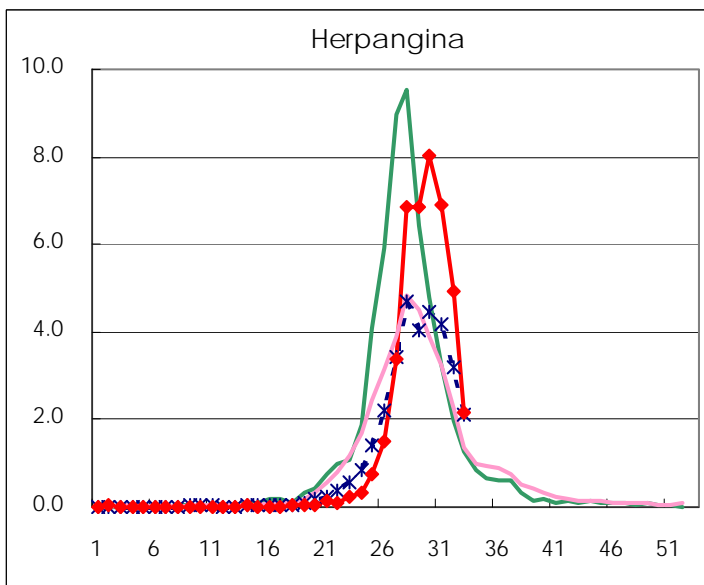
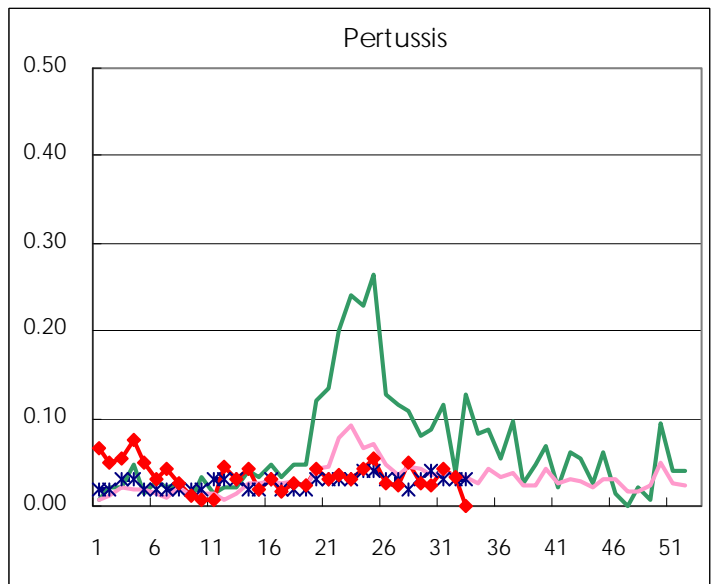
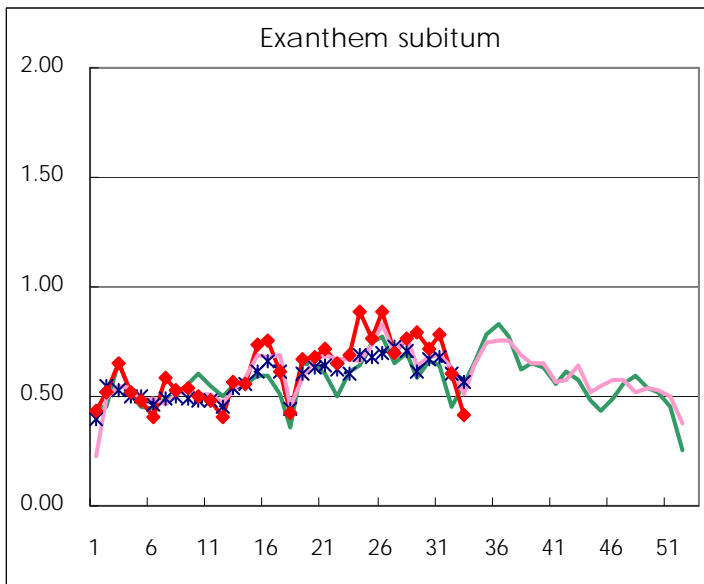
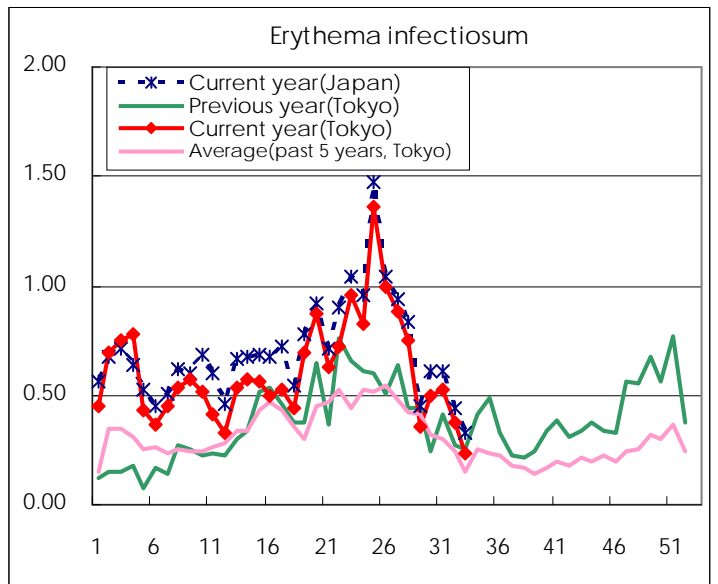
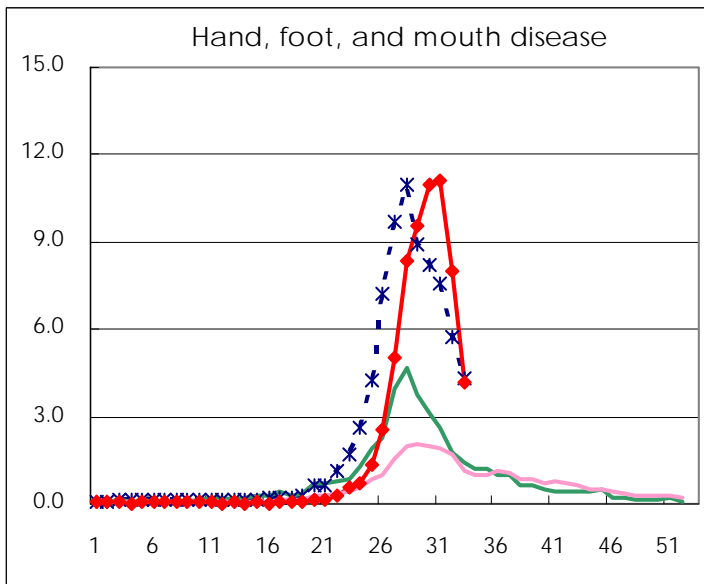
Number of patients with the diseases to be reported
by the designated clinics and hospitals

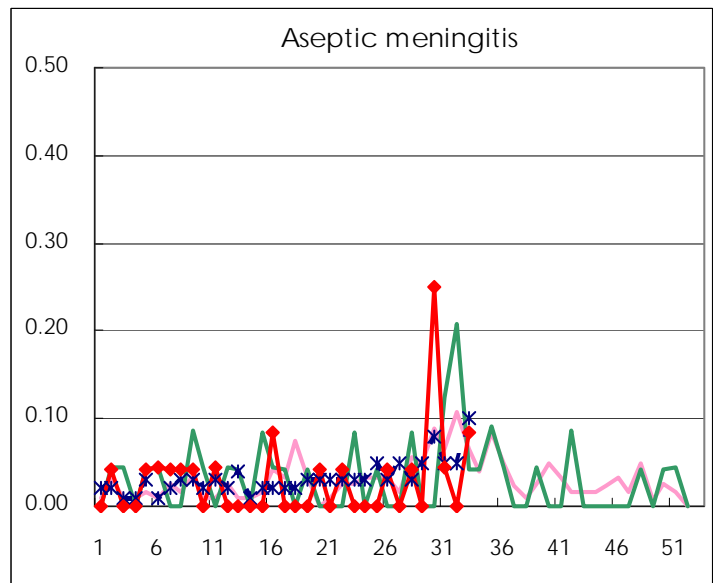
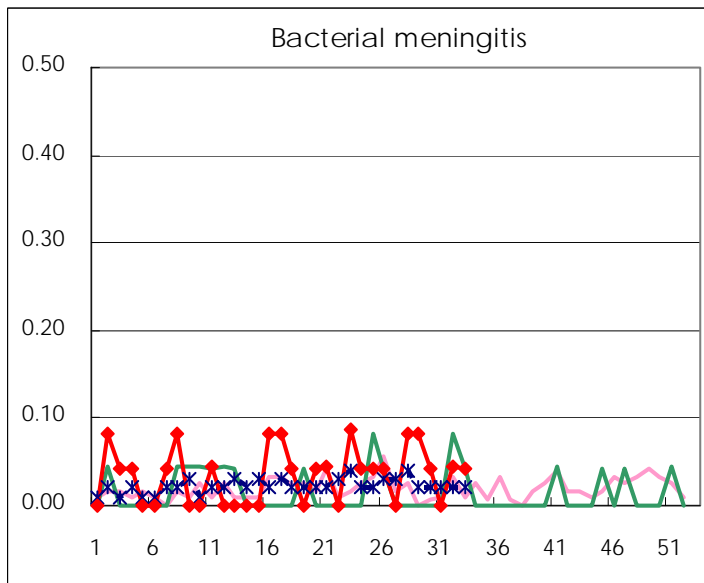
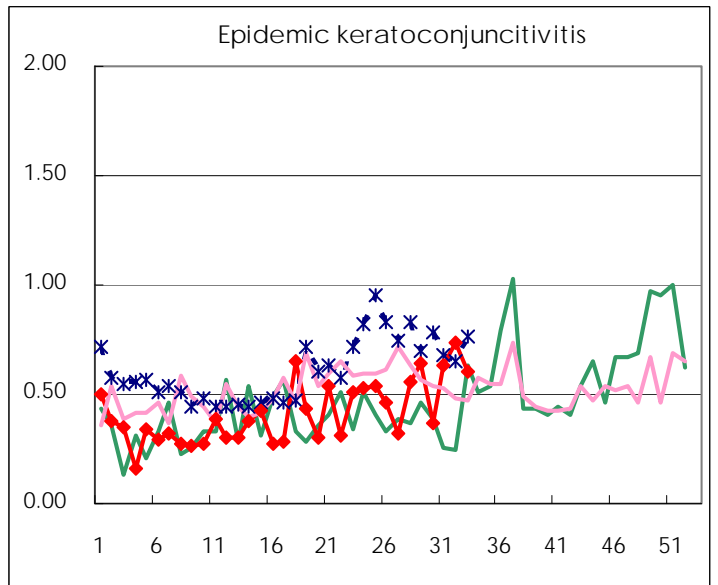
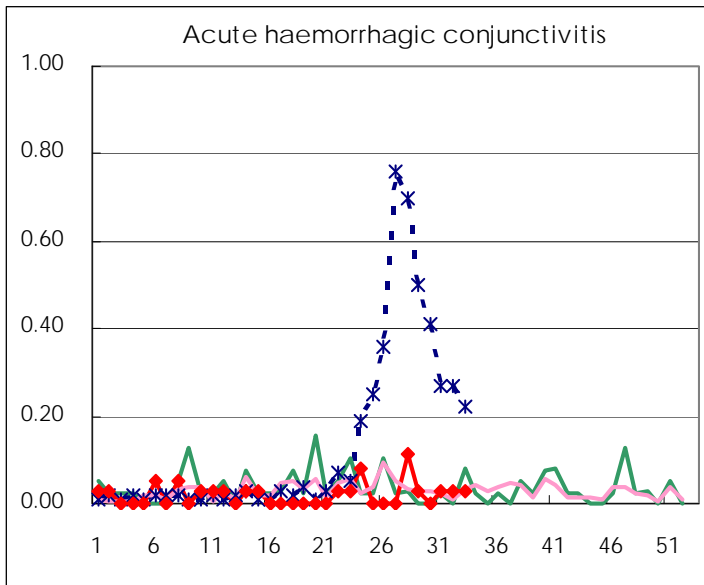
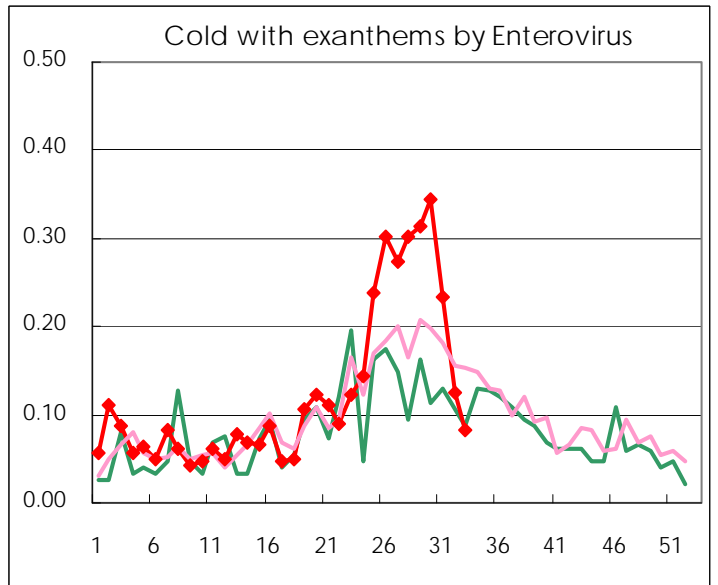
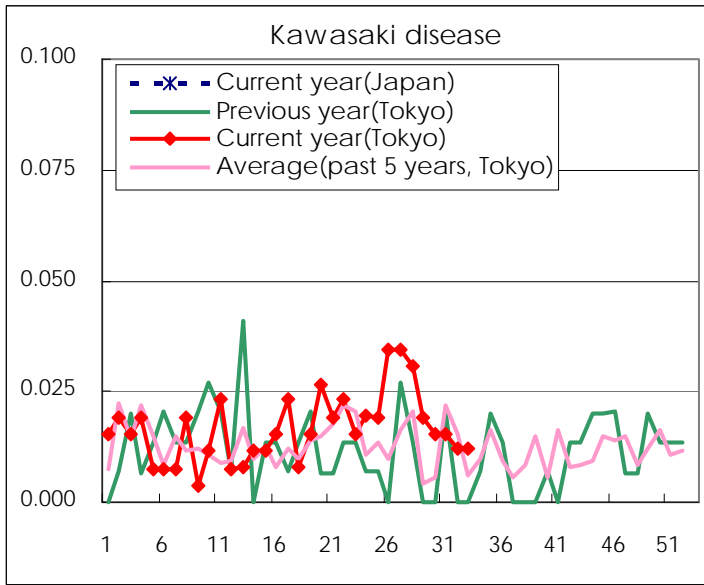
Diseases	2011				
	30th	31st	32nd	33rd	/sentinel
Respiratory syncytial virus infection	62	84	62	51	0.21
Pharyngoconjunctival fever	182	120	94	61	0.25
Group A streptococcal pharyngitis	303	199	136	103	0.42
Infectious gastroenteritis	928	765	571	505	2.06
Chickenpox	161	130	98	105	0.43
Hand, foot, and mouth disease	2,878	2,846	1,983	1,021	4.17
Erythema infectiosum	131	136	92	57	0.23
Exanthem subitum	189	201	148	101	0.41
Pertussis	6	11	8		
Herpangina	2,104	1,772	1,222	527	2.15
Mumps	94	115	79	57	0.23
Kawasaki disease	4	4	3	3	0.01
Cold with exanthems by Enterovirus	90	60	31	20	0.08
Influenza	3	7	9	2	0.01
Acute hemorrhagic conjunctivitis		1	1	1	0.03
Epidemic keratoconjunctivitis	14	24	25	21	0.60
Bacterial meningitis	1		1	1	0.04
Aseptic meningitis	6	1		2	0.08
Mycoplasma pneumonia	23	16	21	17	0.71
Chlamydial pneumonia (excluding psittacosis)					

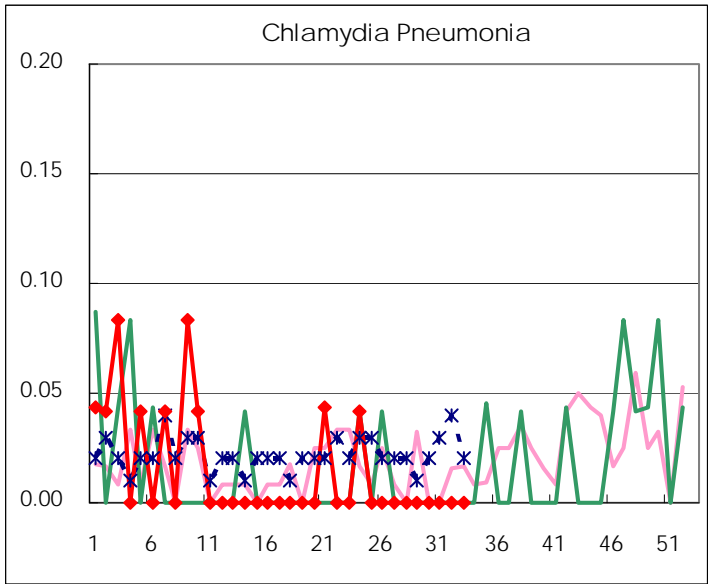
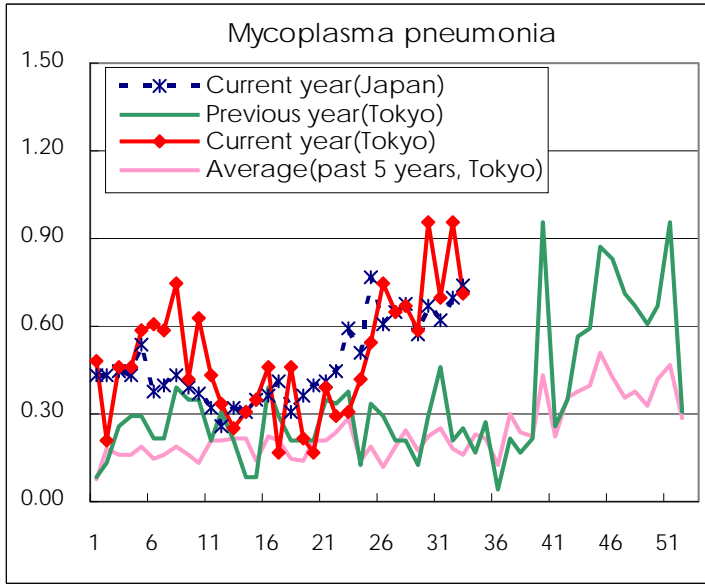
(Blank means 0.)

Disease Trend Graph (weekly reported cases per sentinel in comparison)









Number of sentinel facilities for weekly reporting		
Types of sentinels	Number of sentinels	Sentinels having reported
Pediatric	264	245
Influenza	419	393
Ophthalmic	39	35
Specially-designated	25	24

Tokyo Metropolitan Government
Infectious Disease Surveillance Center