

---

INFECTIOUS DISEASES WEEKLY REPORT

# TOKYO IDWR

Tokyo Metropolitan Infectious Disease Surveillance Center

## 1 September 2011 / Number 34

### Surveillance System in Tokyo, Japan

#### The infectious diseases which all physicians must report

All physicians must report to health centers the incidence of the diseases which are shown at page one. Health centers electronically report the individual cases to Tokyo Metropolitan Infectious Disease Surveillance Center.

#### The infectious diseases required to be reported by the sentinels

The numbers of patients who visit the sentinel clinics or hospitals during a week are reported to health centers in Tokyo. And they electronically report the numbers to Tokyo Metropolitan Infectious Disease Surveillance Center. We have about 500 sentinel clinics and hospitals in Tokyo.

1st Week is early January and 52nd Week is end of December.

Tokyo Metropolitan Institute of Public Health  
Epidemiological Information Office

TEL:81-3-3363-3213 FAX:81-3-5332-7365  
e-mail:[idsc@tokyo-eiken.go.jp](mailto:idsc@tokyo-eiken.go.jp)  
URL:[idsc.tokyo-eiken.go.jp/](http://idsc.tokyo-eiken.go.jp/)

---

## Number of patients with the diseases which all physicians must report

Category	Diseases	Tokyo				Japan		
		31st	32nd	33rd	34th	Cum 2011	34th	Cum 2011
I	Ebola hemorrhagic fever							
	Crimean-Congo hemorrhagic fever							
	Smallpox							
	South American hemorrhagic fever							
	Plague							
	Marburg disease							
	Lassa fever							
II	Acute poliomyelitis					1		1
	Tuberculosis	81	78	80	74	3,150	332	19,546
	Diphtheria							
	Severe Acute Respiratory Syndrome(SARS)							
	Avian influenza H5N1							
III	Cholera		1			1	1	6
	Shigellosis	2	1		2	40	25	150
	Enterohemorrhagic Escherichia coli infection	30	11	9	13	169	116	2,654
	Typhoid fever					3		14
	Paratyphoid fever					9		17
IV	Hepatitis E		1			7		41
	West Nile fever							
	Hepatitis A					21	2	143
	Echinococcosis					1		12
	Yellow fever							
	Psittacosis	1				3		11
	Omsk hemorrhagic fever							
	Relapsing fever							
	Kyasanur forest disease							
	Q fever							
	Rabies							
	Coccidioidomycosis					2		2
	Monkeypox							
	Hemorrhagic fever with renal syndrome							
	Western equine encephalitis							
	Tick-borne encephalitis							
	Anthrax							
	Chikungunya fever							5
	Scrub typhus(Tsutsugamushi disease)					8		162
	Dengue fever		1			14	1	59
	Eastern equine encephalitis							
	Avian influenza (excluding H5N1)							
	Nipah virus infection							
	Japanese spotted fever					1	6	68
	Japanese encephalitis					1		2
	Hantavirus pulmonary syndrome							
	Herpes B virus infection							
	Glanders							
	Brucellosis							
	Venezuelan equine encephalitis							
	Hendra virus infection							
Epidemic typhus								
Botulism							3	
Malaria	2	2		1	17	1	45	
Tularemia								
Lyme disease	1				3		5	
Lyssavirus infection(excluding rabies)								
Rift valley fever								
Melioidosis						1	2	
Legionellosis	3	1	3	2	41	9	459	
Leptospirosis					3		8	
Rocky mountain spotted fever								

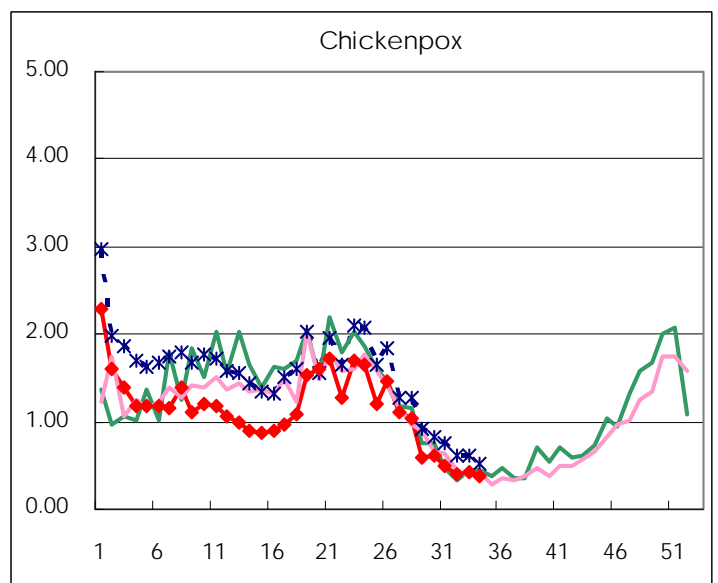
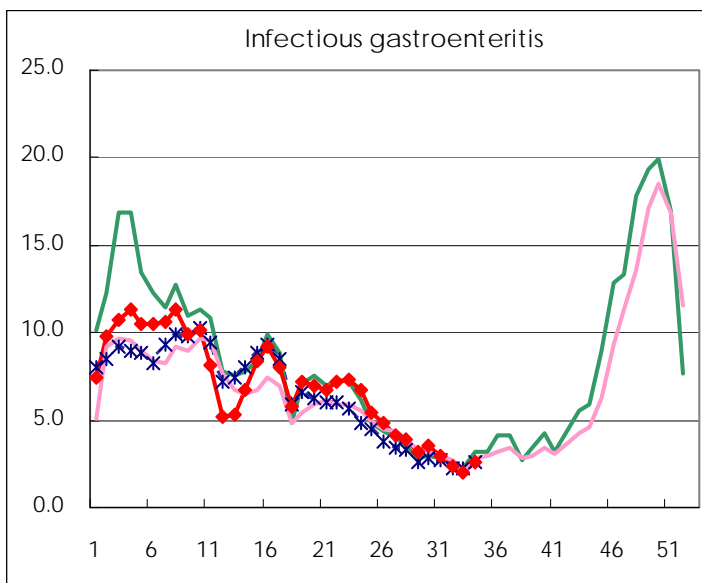
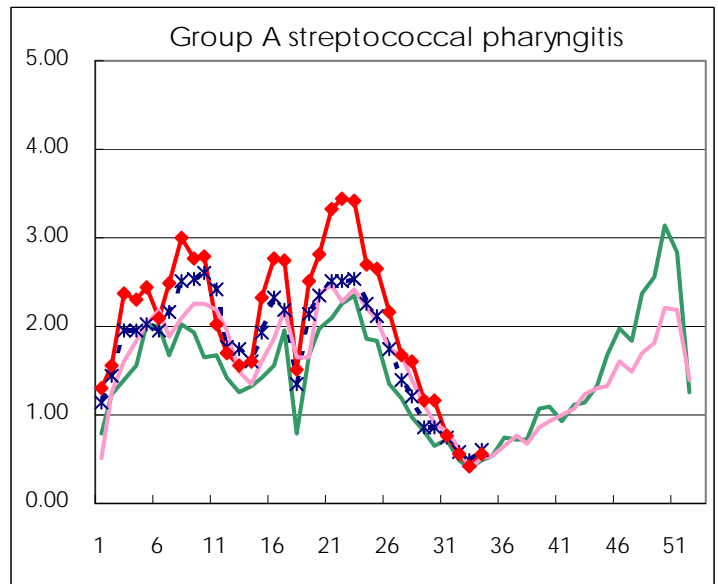
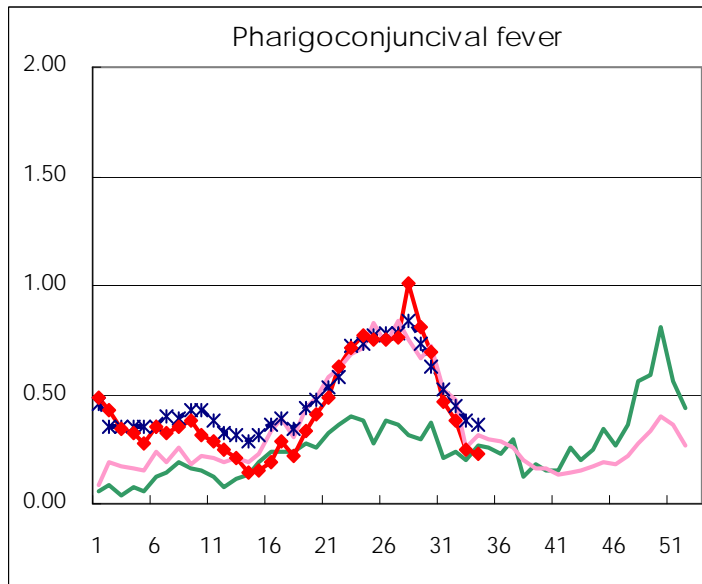
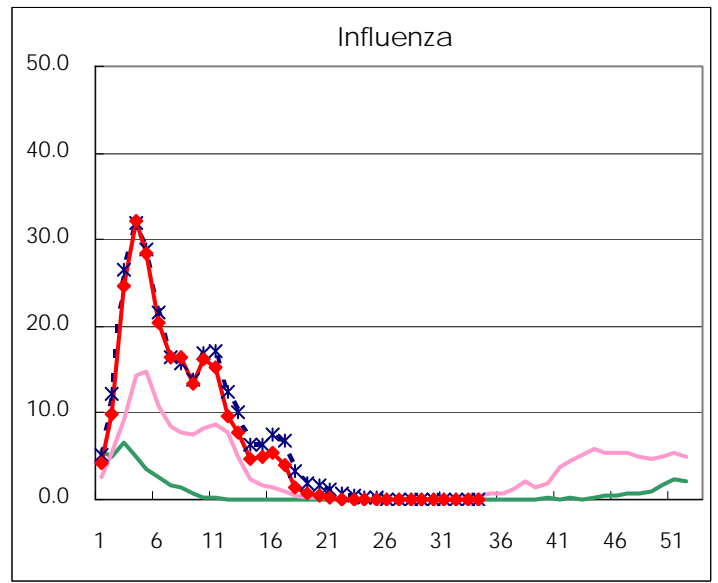
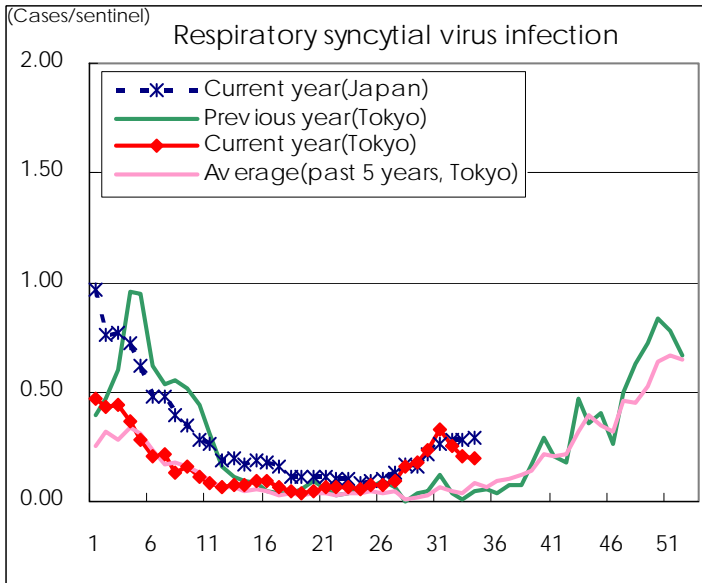
Category	Diseases	Tokyo				Japan		
		31st	32nd	33rd	34th	Cum 2011	34th	Cum 2011
V	Amebiasis	7	7	1	3	110	11	512
	Viral hepatitis(excluding hepatitis A and E)	1	1		1	28	2	168
	Acute encephalitis(excluding JE and WNE)	1	1	1		13		193
	Cryptosporidiosis					2		6
	Creutzfeldt-Jakob disease		1	1		12	1	80
	Severe invasive streptococcal infections(TSLS)				1	24		149
	Acquired immunodeficiency syndrome (AIDS)	9	3	5	11	261	17	927
	Giardiasis				1	8	1	44
	Meningococcal meningitis					2		7
	Congenital rubella syndrome							1
	Syphilis	6	6	5	8	150	9	491
	Tetanus	1				6	1	74
	Vancomycin-resistant S. aureus infection							
	Vancomycin-resistant Enterococcus infection					1		37
	Rubella	1	1		1	26	5	304
	Measles	1	2			159	2	387

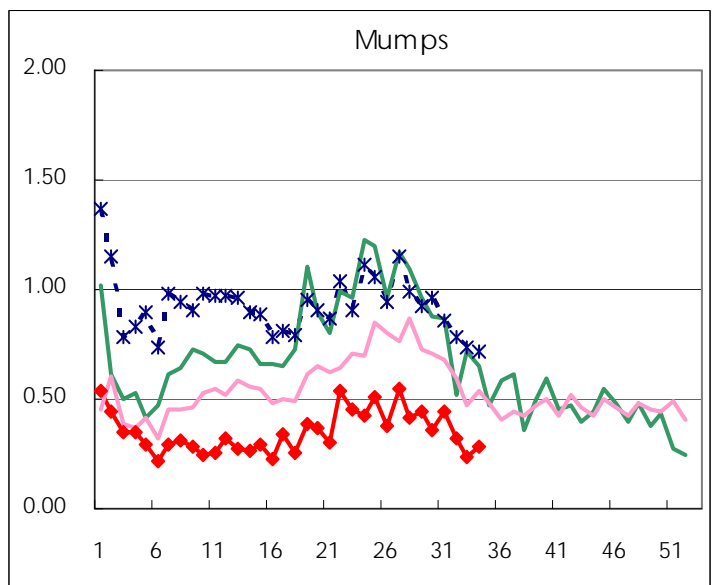
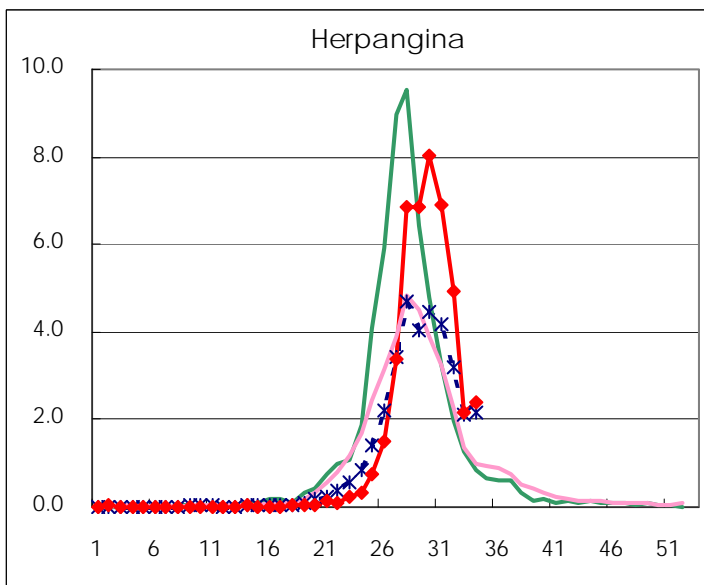
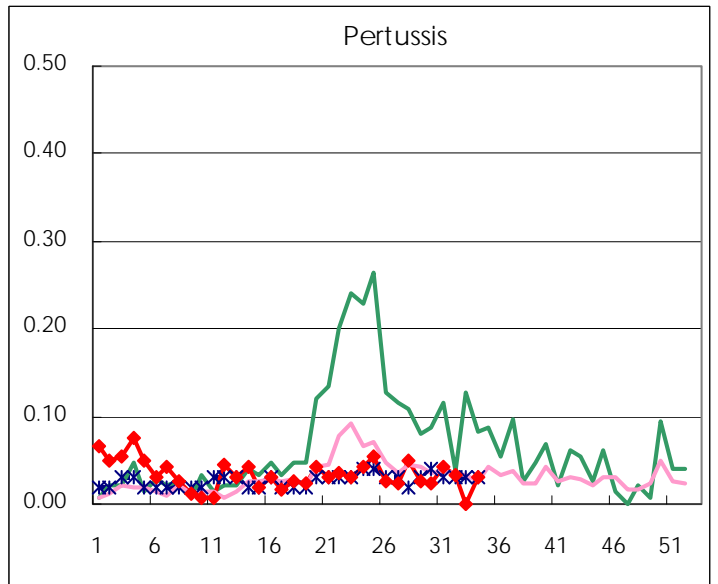
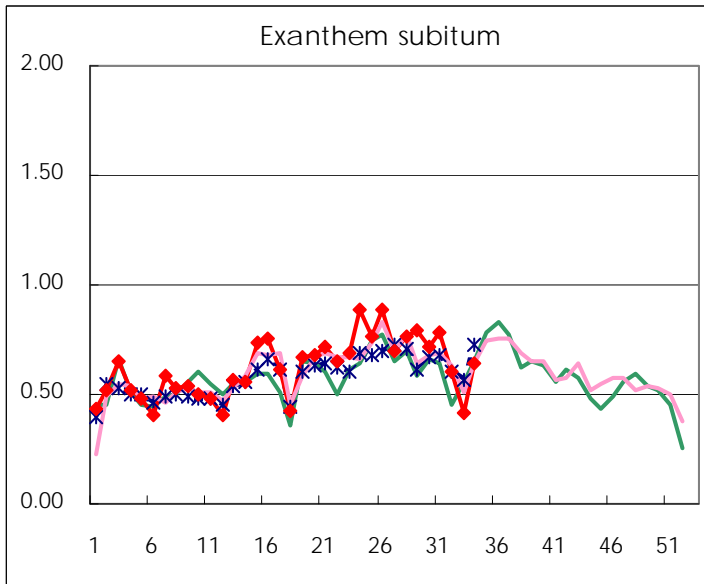
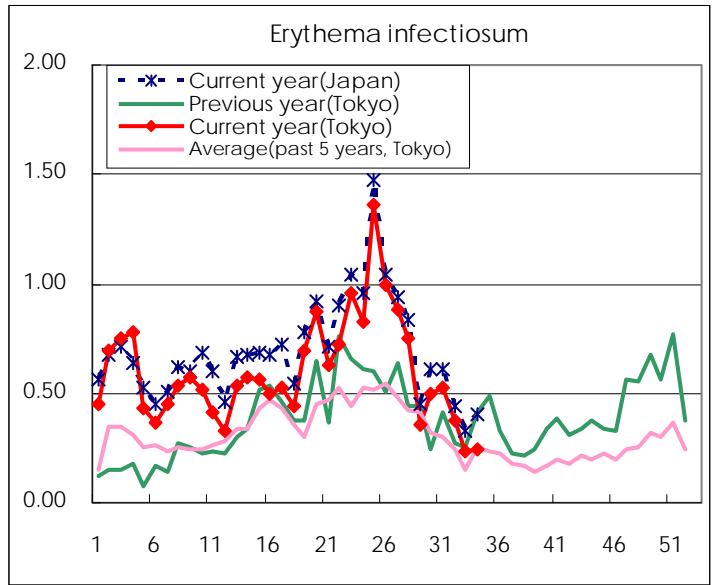
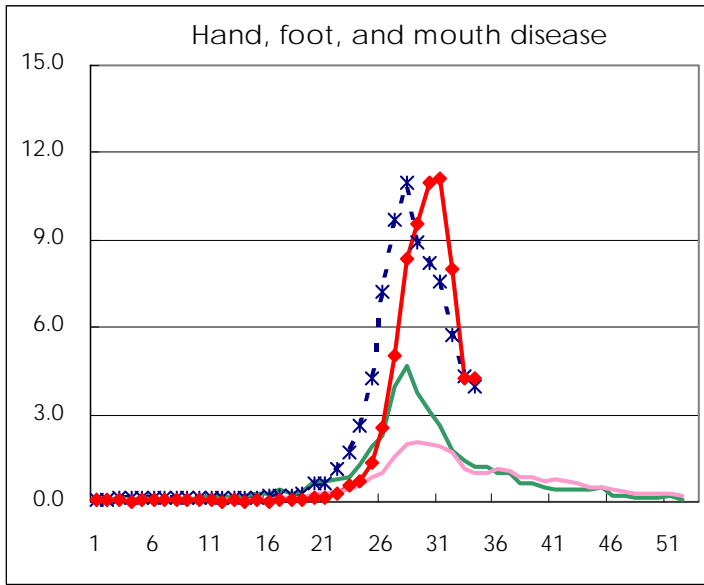
Number of patients with the diseases to be reported  
by the designated clinics and hospitals

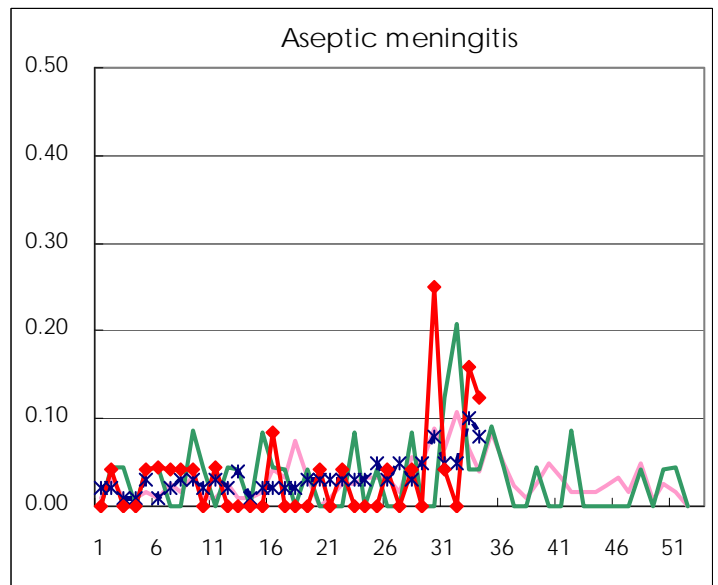
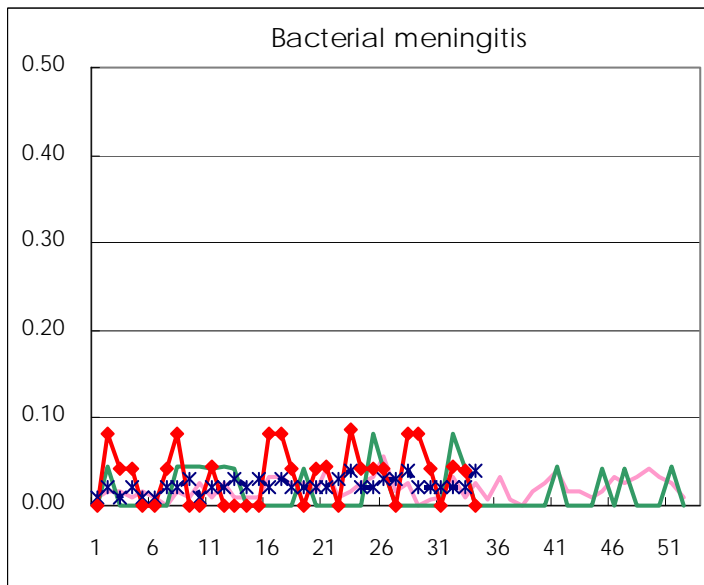
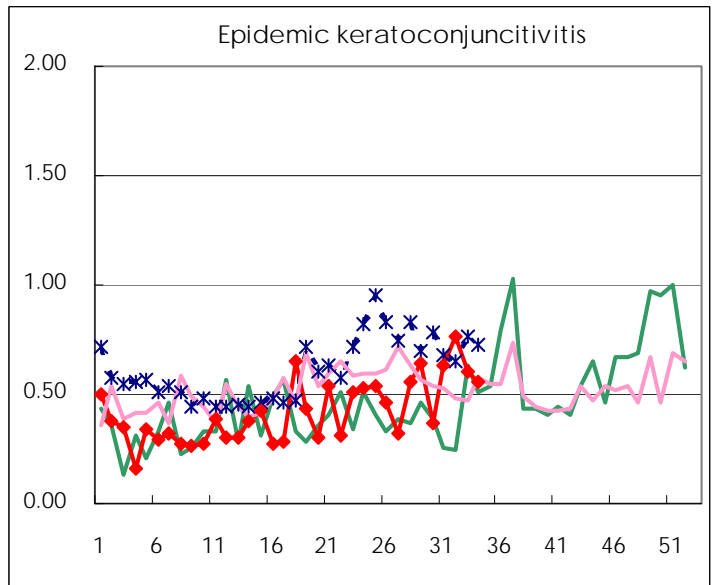
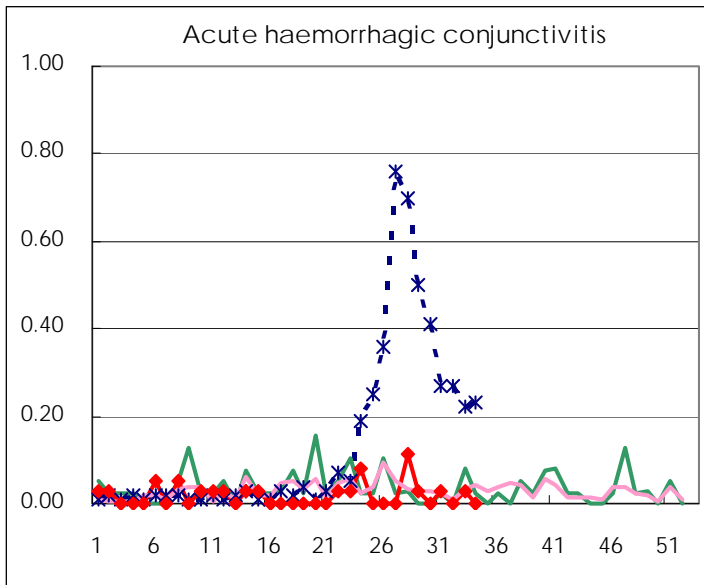
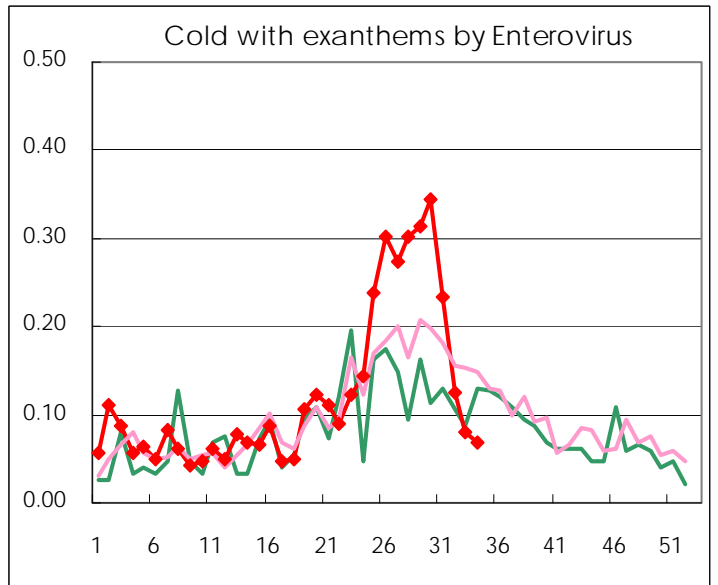
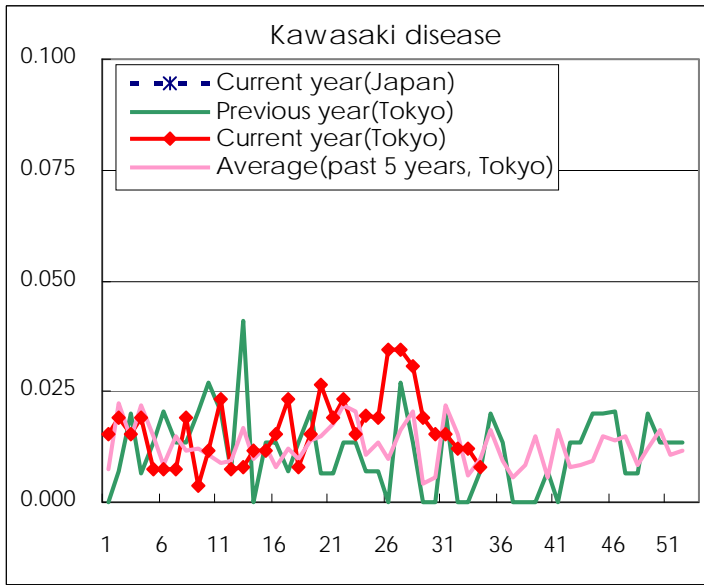
Diseases	2011				
	31st	32nd	33rd	34th	/sentinel
Respiratory syncytial virus infection	84	62	51	51	0.20
Pharyngoconjunctival fever	120	94	61	59	0.23
Group A streptococcal pharyngitis	199	136	104	146	0.56
Infectious gastroenteritis	765	571	506	679	2.62
Chickenpox	130	98	106	96	0.37
Hand, foot, and mouth disease	2,846	1,983	1,036	1,100	4.25
Erythema infectiosum	136	92	58	64	0.25
Exanthem subitum	201	148	103	166	0.64
Pertussis	11	8		8	0.03
Herpangina	1,772	1,222	534	622	2.40
Mumps	115	79	57	73	0.28
Kawasaki disease	4	3	3	2	0.01
Cold with exanthems by Enterovirus	60	31	20	18	0.07
Influenza	7	9	2	2	0.005
Acute hemorrhagic conjunctivitis	1		1		
Epidemic keratoconjunctivitis	24	26	21	21	0.55
Bacterial meningitis		1	1		
Aseptic meningitis	1		4	3	0.13
Mycoplasma pneumonia	21	21	17	19	0.79
Chlamydial pneumonia (excluding psittacosis)					

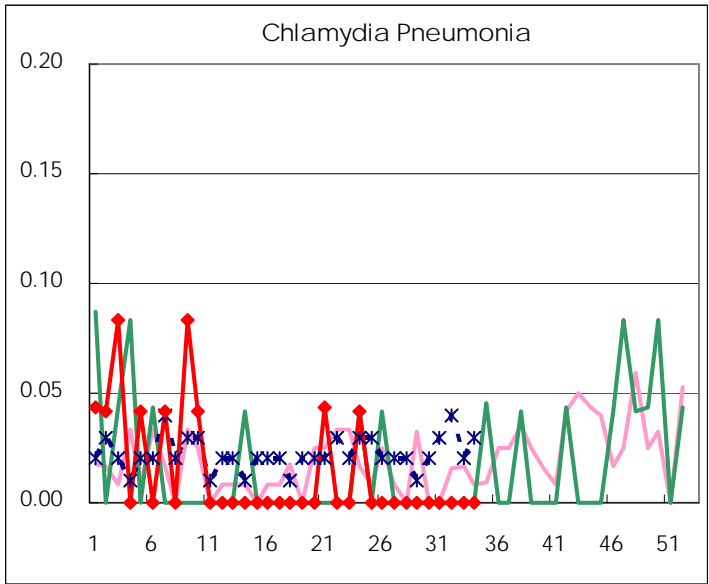
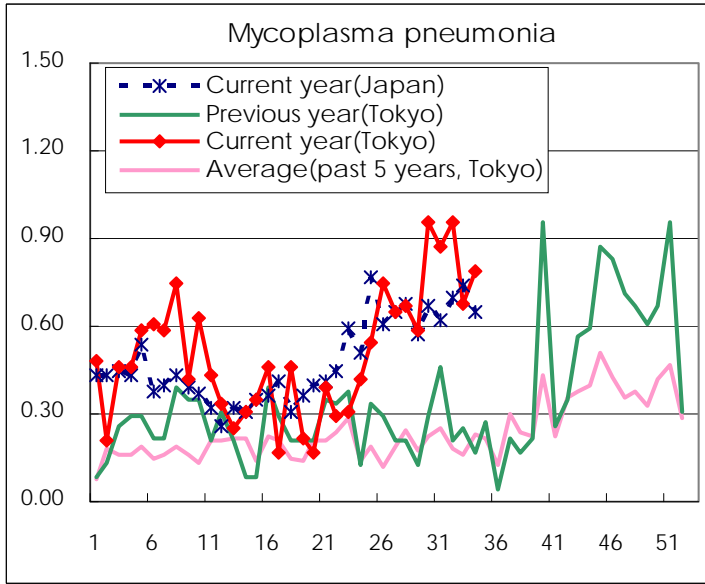
( Blank means 0. )

# Disease Trend Graph (weekly reported cases per sentinel in comparison)









Number of sentinel facilities for weekly reporting		
Types of sentinels	Number of sentinels	Sentinels having reported
Pediatric	264	259
Influenza	419	408
Ophthalmic	39	38
Specially-designated	25	24

Tokyo Metropolitan Government  
**Infectious Disease Surveillance Center**