
INFECTIOUS DISEASES WEEKLY REPORT

TOKYO iDWR

Tokyo Metropolitan Infectious Disease Surveillance Center

15 September 2011 / Number 36

Surveillance System in Tokyo, Japan

The infectious diseases which all physicians must report

All physicians must report to health centers the incidence of the diseases which are shown at page one. Health centers electronically report the individual cases to Tokyo Metropolitan Infectious Disease Surveillance Center.

The infectious diseases required to be reported by the sentinels

The numbers of patients who visit the sentinel clinics or hospitals during a week are reported to health centers in Tokyo. And they electronically report the numbers to Tokyo Metropolitan Infectious Disease Surveillance Center. We have about 500 sentinel clinics and hospitals in Tokyo.

1st Week is early January and 52nd Week is end of December.

Tokyo Metropolitan Institute of Public Health
Epidemiological Information Office

TEL:81-3-3363-3213 FAX:81-3-5332-7365

e-mail:idsc@tokyo-eiken.go.jp

URL:idsc.tokyo-eiken.go.jp/

Number of patients with the diseases which all physicians must report

Category	Diseases	Tokyo				Japan		
		33rd	34th	35th	36th	Cum 2011	36th	Cum 2011
I	Ebola hemorrhagic fever							
	Crimean-Congo hemorrhagic fever							
	Smallpox							
	South American hemorrhagic fever							
	Plague							
	Marburg disease							
	Lassa fever							
II	Acute poliomyelitis					1		1
	Tuberculosis	92	82	85	57	3,331	407	20,948
	Diphtheria							
	Severe Acute Respiratory Syndrome(SARS)							
	Avian influenza H5N1							
III	Cholera					1		6
	Shigellosis		2	3	5	48	14	190
	Enterohemorrhagic Escherichia coli infection	9	13	16	14	199	126	2,950
	Typhoid fever					3		15
	Paratyphoid fever					9		18
IV	Hepatitis E					7		44
	West Nile fever							
	Hepatitis A			1		22	1	148
	Echinococcosis					1		13
	Yellow fever							
	Psittacosis					3		11
	Omsk hemorrhagic fever							
	Relapsing fever							
	Kyasanur forest disease							
	Q fever							
	Rabies							
	Coccidioidomycosis					2		2
	Monkeypox							
	Hemorrhagic fever with renal syndrome							
	Western equine encephalitis							
	Tick-borne encephalitis							
	Anthrax							
	Chikungunya fever							5
	Scrub typhus(Tsutsugamushi disease)					8	1	166
	Dengue fever				2	16	2	67
	Eastern equine encephalitis							
	Avian influenza (excluding H5N1)							
	Nipah virus infection							
	Japanese spotted fever					1	4	94
	Japanese encephalitis					1	1	3
	Hantavirus pulmonary syndrome							
	Herpes B virus infection							
	Glanders							
	Brucellosis							
	Venezuelan equine encephalitis							
	Hendra virus infection							
	Epidemic typhus							
Botulism							3	
Malaria		1				17	47	
Tularemia								
Lyme disease						3	5	
Lyssavirus infection(excluding rabies)								
Rift valley fever								
Melioidosis							2	
Legionellosis	3	3	1	4	47	14	507	
Leptospirosis					3	2	12	
Rocky mountain spotted fever								

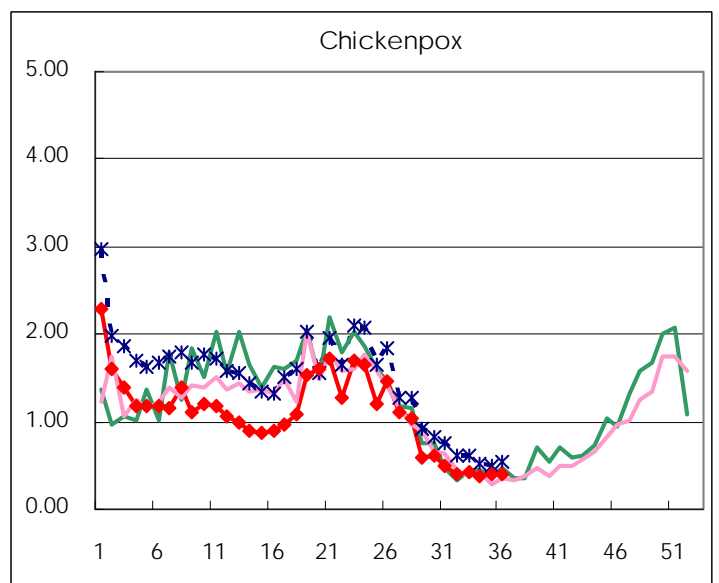
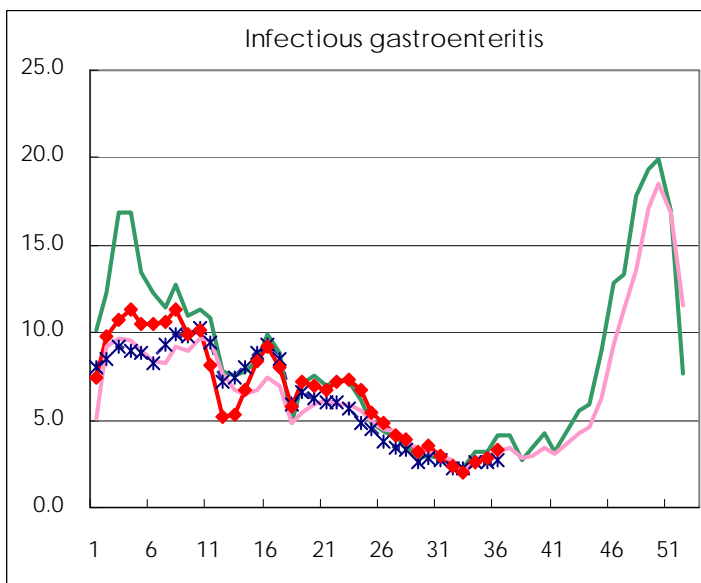
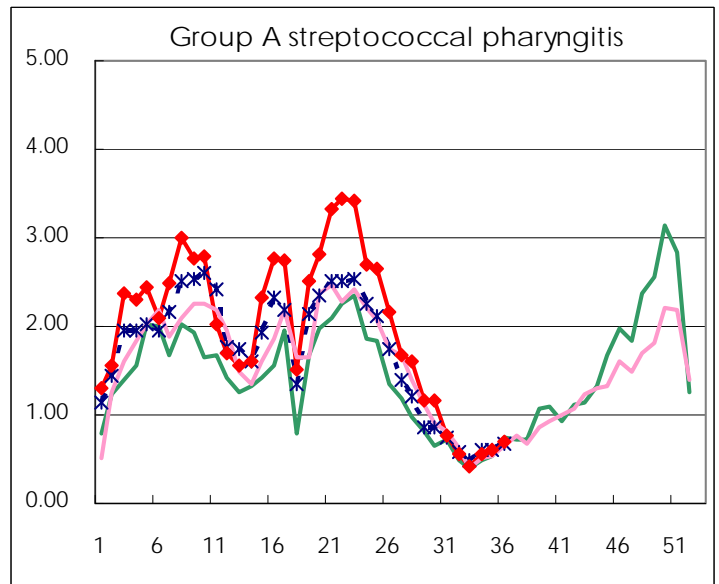
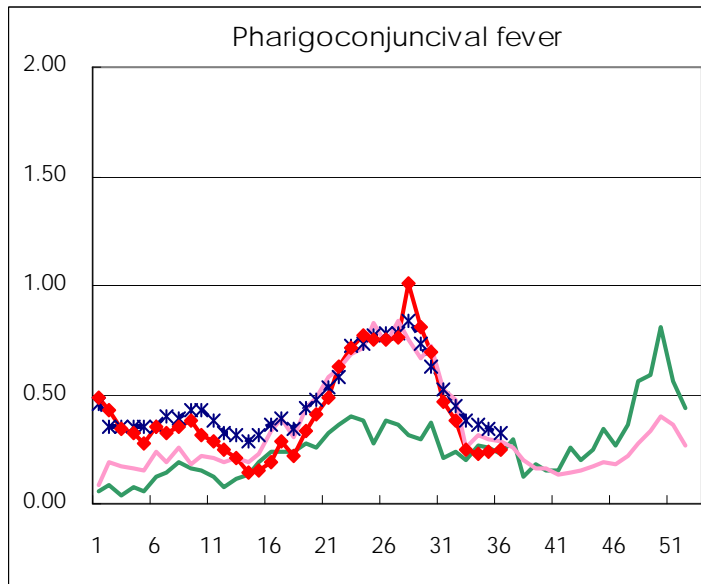
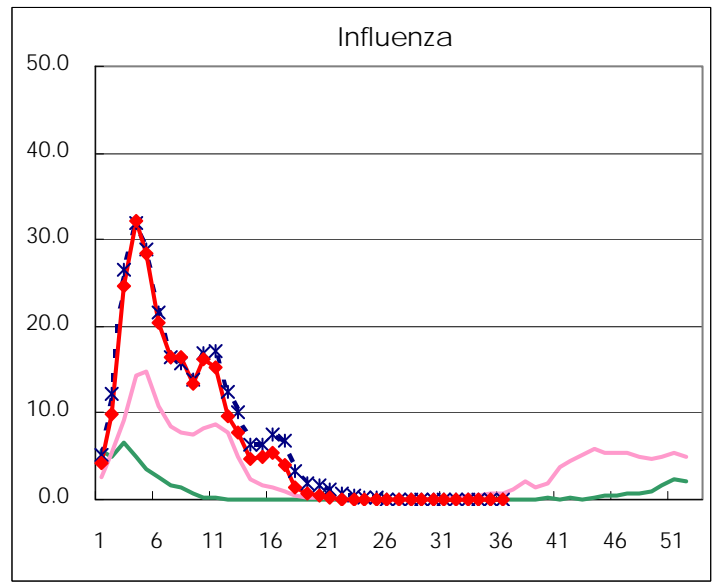
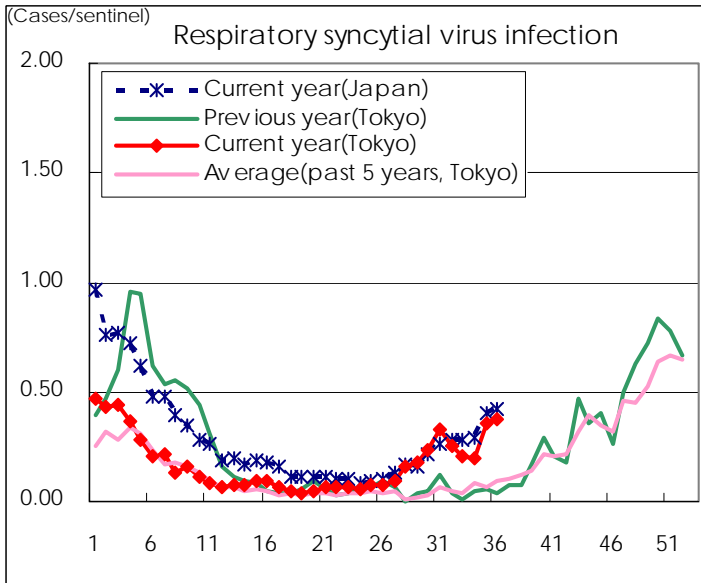
Category	Diseases	Tokyo				Japan		
		33rd	34th	35th	36th	Cum 2011	36th	Cum 2011
V	Amebiasis	1	3	7	4	121	13	562
	Viral hepatitis(excluding hepatitis A and E)		1			28	2	176
	Acute encephalitis(excluding JE and WNE)	1				13	1	195
	Cryptosporidiosis					2		7
	Creutzfeldt-Jakob disease	1			1	13	4	86
	Severe invasive streptococcal infections(TSLS)		1	3		27	1	153
	Acquired immunodeficiency syndrome (AIDS)	5	12	8	6	276	7	990
	Giardiasis		1			8	1	46
	Meningococcal meningitis					2		7
	Congenital rubella syndrome							1
	Syphilis	5	8	5	4	159	13	531
	Tetanus					6	1	80
	Vancomycin-resistant S. aureus infection							
	Vancomycin-resistant Enterococcus infection					1	2	41
	Rubella		1			26		313
	Measles			5		164	2	392

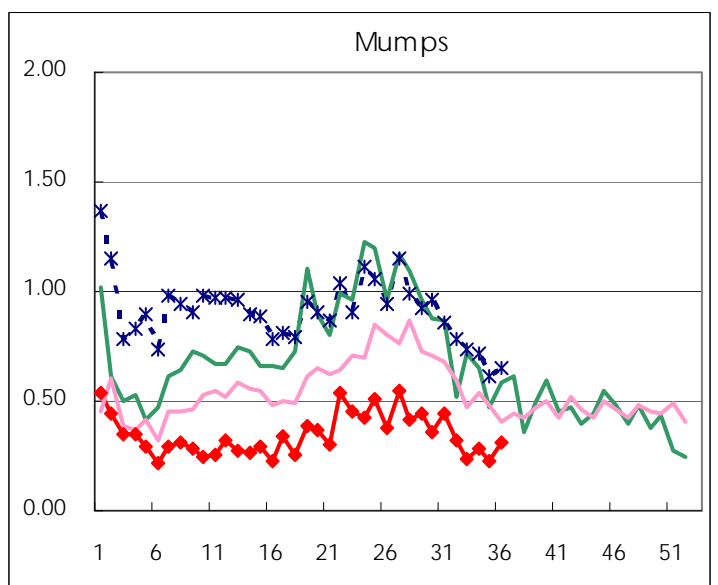
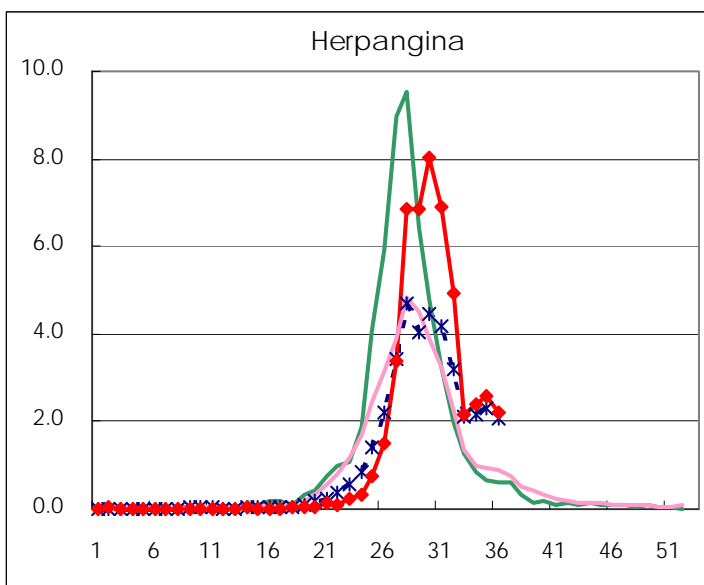
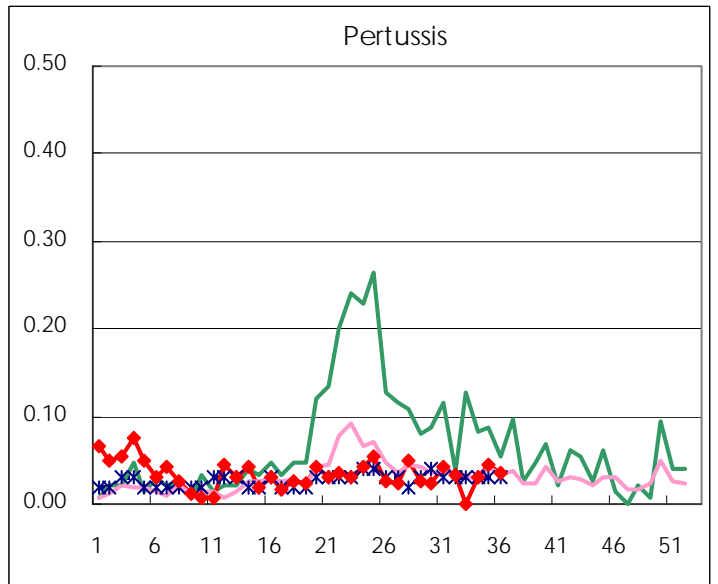
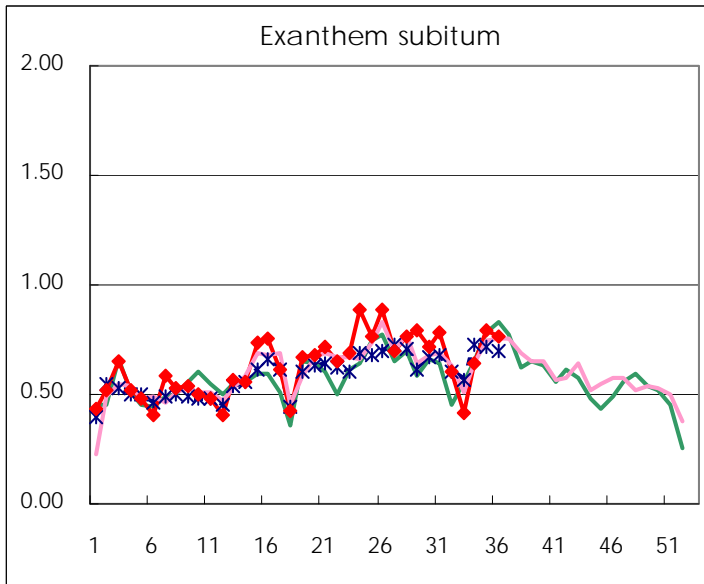
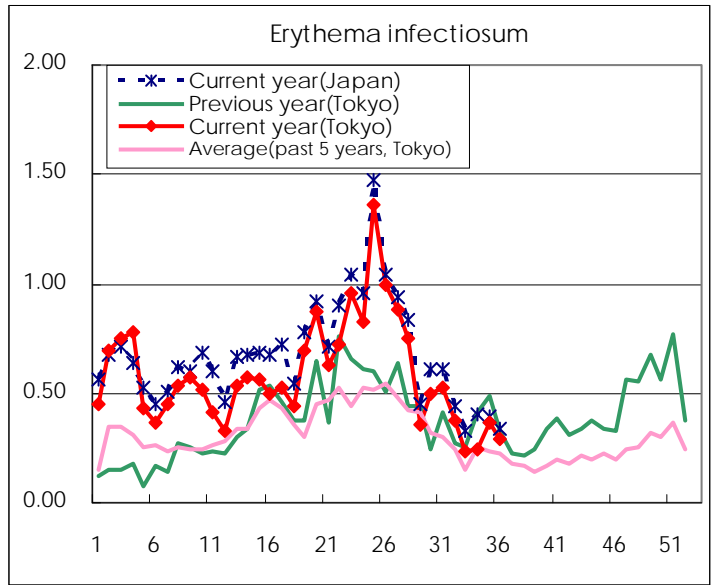
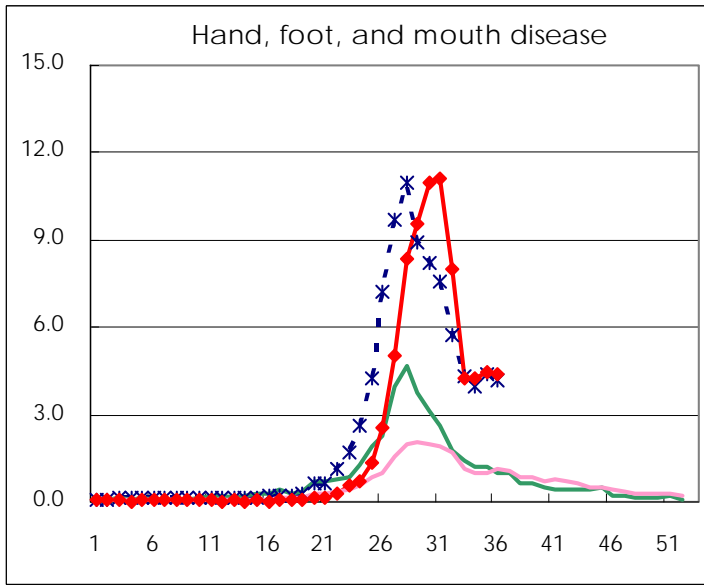
Number of patients with the diseases to be reported
by the designated clinics and hospitals

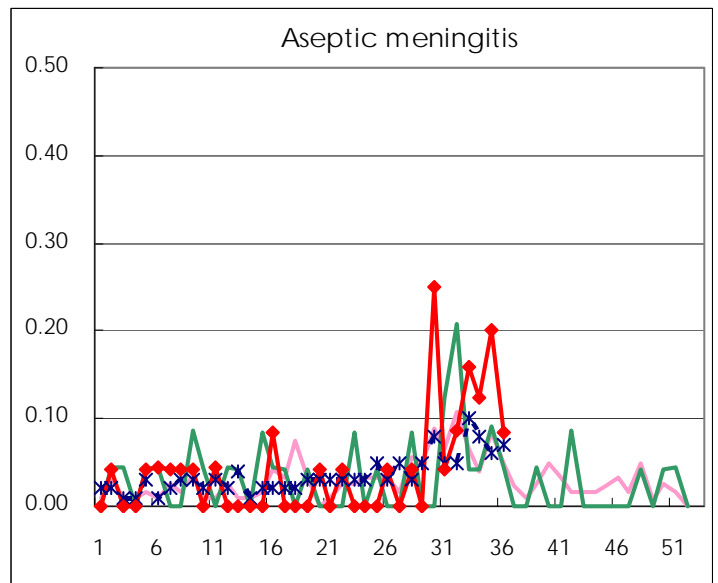
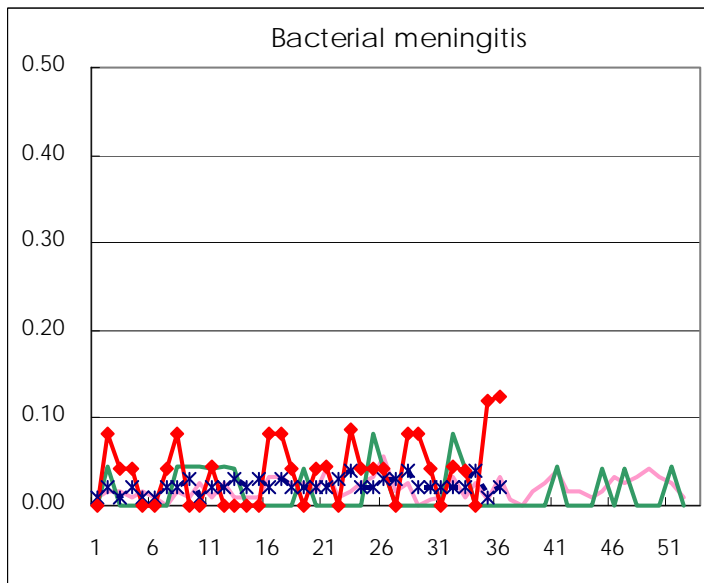
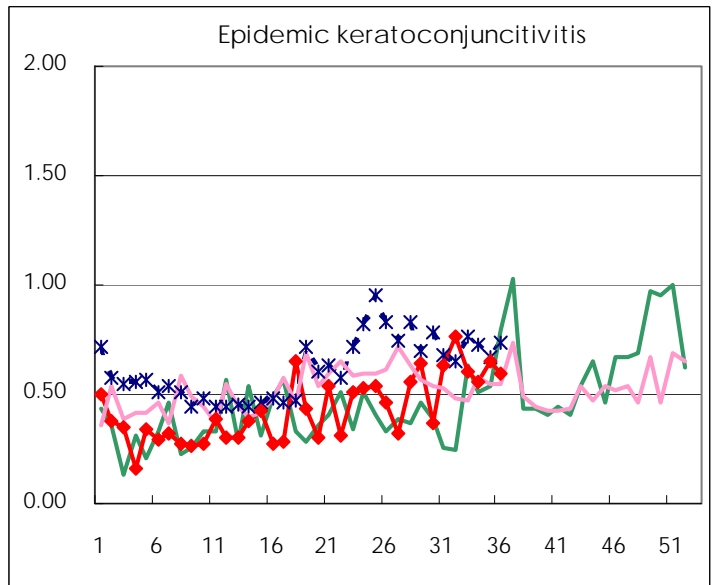
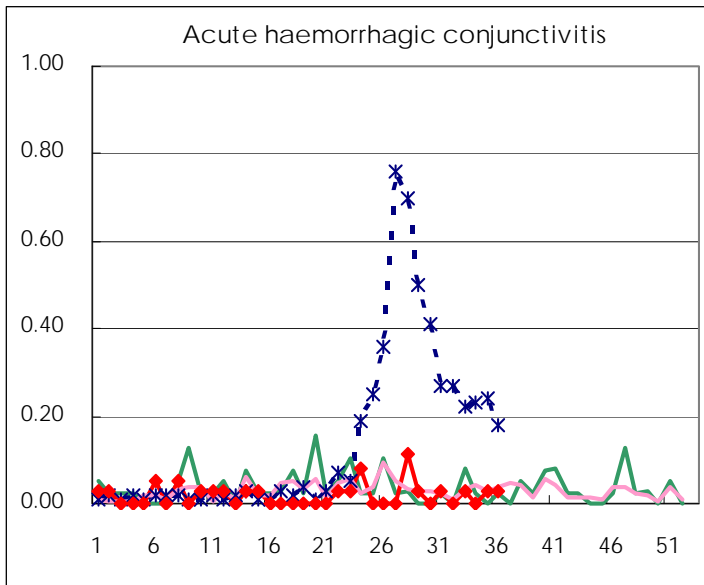
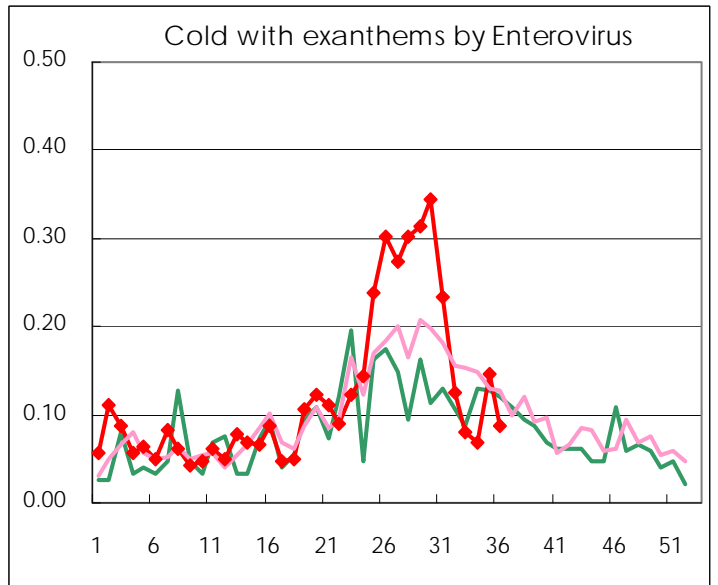
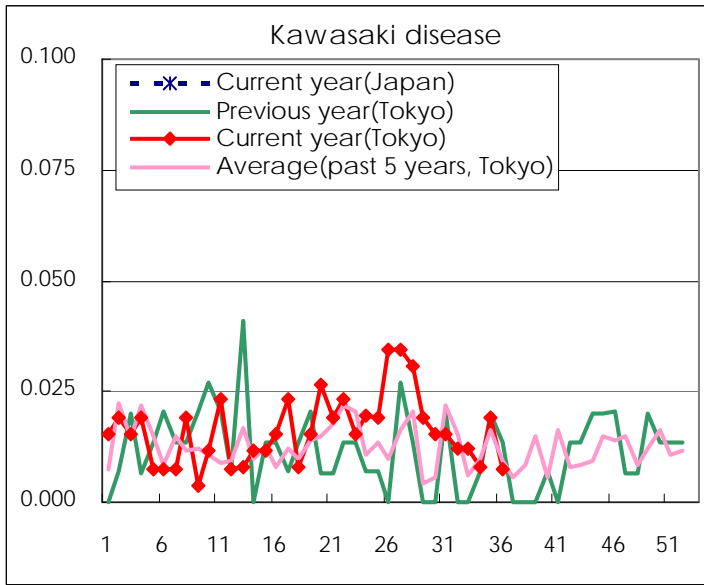
Diseases	2011				
	33rd	34th	35th	36th	/sentinel
Respiratory syncytial virus infection	51	51	93	97	0.37
Pharyngoconjunctival fever	61	59	63	65	0.25
Group A streptococcal pharyngitis	104	146	159	181	0.69
Infectious gastroenteritis	506	679	740	850	3.26
Chickenpox	106	96	103	106	0.41
Hand, foot, and mouth disease	1,036	1,100	1,171	1,136	4.35
Erythema infectiosum	58	64	95	77	0.30
Exanthem subitum	103	166	206	199	0.76
Pertussis		8	12	9	0.03
Herpangina	534	622	675	573	2.20
Mumps	57	73	58	81	0.31
Kawasaki disease	3	2	5	2	0.01
Cold with exanths by Enterovirus	20	18	38	23	0.09
Influenza	2	2	1	7	0.02
Acute hemorrhagic conjunctivitis	1		1	1	0.03
Epidemic keratoconjunctivitis	21	21	24	22	0.59
Bacterial meningitis	1		3	3	0.13
Aseptic meningitis	4	3	5	2	0.08
Mycoplasma pneumonia	17	19	24	33	1.38
Chlamydial pneumonia (excluding psittacosis)				1	0.04

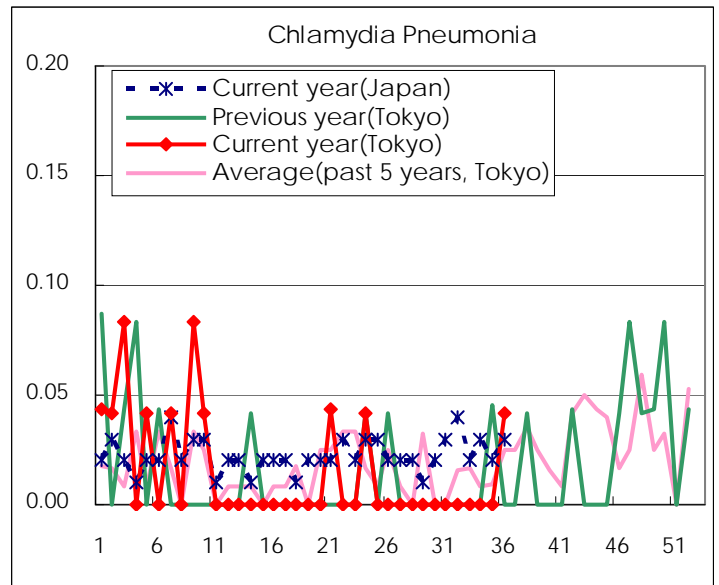
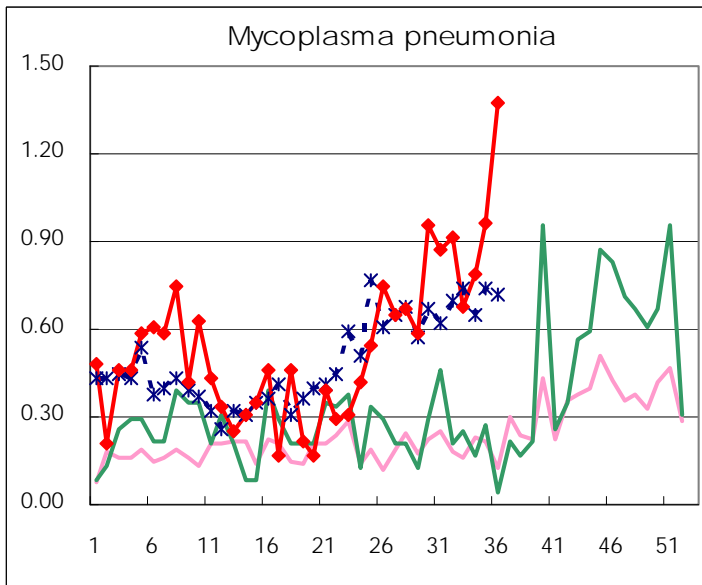
(Blank means 0.)

Disease Trend Graph (weekly reported cases per sentinel in comparison)









Number of sentinel facilities for weekly reporting		
Types of sentinels	Number of sentinels	Sentinels having reported
Pediatric	264	261
Influenza	419	415
Ophthalmic	39	37
Specially-designated	25	24

Tokyo Metropolitan Government
Infectious Disease Surveillance Center