
INFECTIOUS DISEASES WEEKLY REPORT

TOKYO IDWR

Tokyo Metropolitan Infectious Disease Surveillance Center

29 September 2011 / Number 38

Surveillance System in Tokyo, Japan

The infectious diseases which all physicians must report

All physicians must report to health centers the incidence of the diseases which are shown at page one. Health centers electronically report the individual cases to Tokyo Metropolitan Infectious Disease Surveillance Center.

The infectious diseases required to be reported by the sentinels

The numbers of patients who visit the sentinel clinics or hospitals during a week are reported to health centers in Tokyo. And they electronically report the numbers to Tokyo Metropolitan Infectious Disease Surveillance Center. We have about 500 sentinel clinics and hospitals in Tokyo.

1st Week is early January and 52nd Week is end of December.

Tokyo Metropolitan Institute of Public Health
Epidemiological Information Office

TEL:81-3-3363-3213 FAX:81-3-5332-7365

e-mail:idsc@tokyo-eiken.go.jp

URL:idsc.tokyo-eiken.go.jp/

Number of patients with the diseases which all physicians must report

Category	Diseases	Tokyo				Japan		
		35th	36th	37th	38th	Cum 2011	38th	Cum 2011
I	Ebola hemorrhagic fever							
	Crimean-Congo hemorrhagic fever							
	Smallpox							
	South American hemorrhagic fever							
	Plague							
	Marburg disease							
	Lassa fever							
II	Acute poliomyelitis					1		1
	Tuberculosis	96	72	103	53	3,530	261	22,063
	Diphtheria							
	Severe Acute Respiratory Syndrome(SARS)							
	Avian influenza H5N1							
III	Cholera					1		8
	Shigellosis	3	6	1	1	51	11	217
	Enterohemorrhagic Escherichia coli infection	16	16	8	3	212	46	3,133
	Typhoid fever				1	4	1	16
	Paratyphoid fever					9	1	20
IV	Hepatitis E					7		46
	West Nile fever							
	Hepatitis A	1		1		23	1	152
	Echinococcosis					1		13
	Yellow fever							
	Psittacosis					3		11
	Omsk hemorrhagic fever							
	Relapsing fever							
	Kyasanur forest disease							
	Q fever							
	Rabies							
	Coccidioidomycosis					2		2
	Monkeypox							
	Hemorrhagic fever with renal syndrome							
	Western equine encephalitis							
	Tick-borne encephalitis							
	Anthrax							
	Chikungunya fever							5
	Scrub typhus(Tsutsugamushi disease)					8	1	167
	Dengue fever		2		1	17	2	70
	Eastern equine encephalitis							
	Avian influenza (excluding H5N1)							
	Nipah virus infection							
	Japanese spotted fever					1	4	103
	Japanese encephalitis					1		4
	Hantavirus pulmonary syndrome							
	Herpes B virus infection							
	Glanders							
	Brucellosis							
	Venezuelan equine encephalitis							
	Hendra virus infection							
Epidemic typhus								
Botulism							3	
Malaria				1	18	4	52	
Tularemia								
Lyme disease					3		6	
Lyssavirus infection(excluding rabies)								
Rift valley fever								
Melioidosis							2	
Legionellosis	1	4	5	1	53	8	554	
Leptospirosis					3	1	14	
Rocky mountain spotted fever								

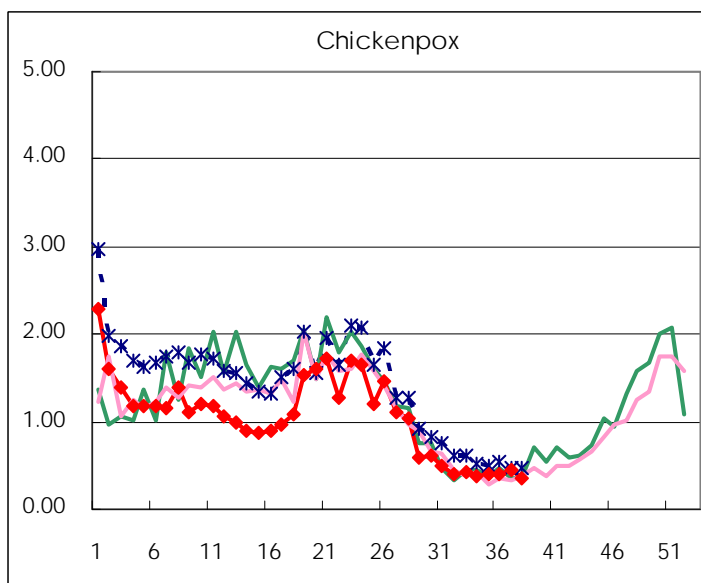
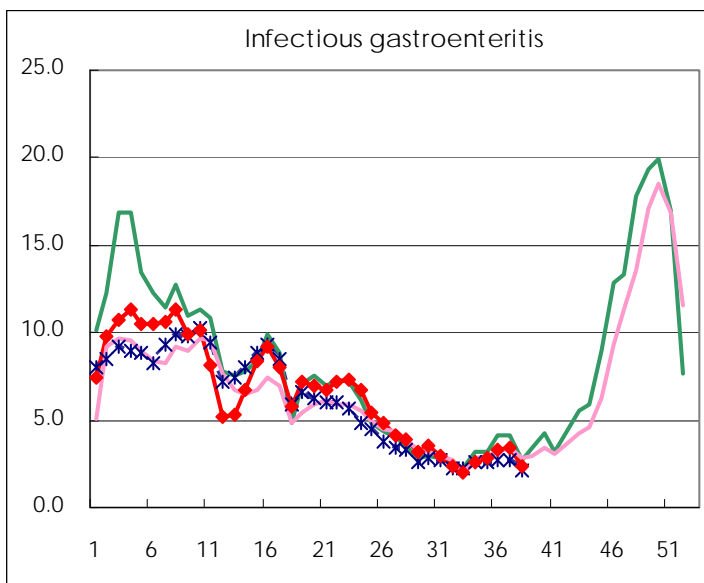
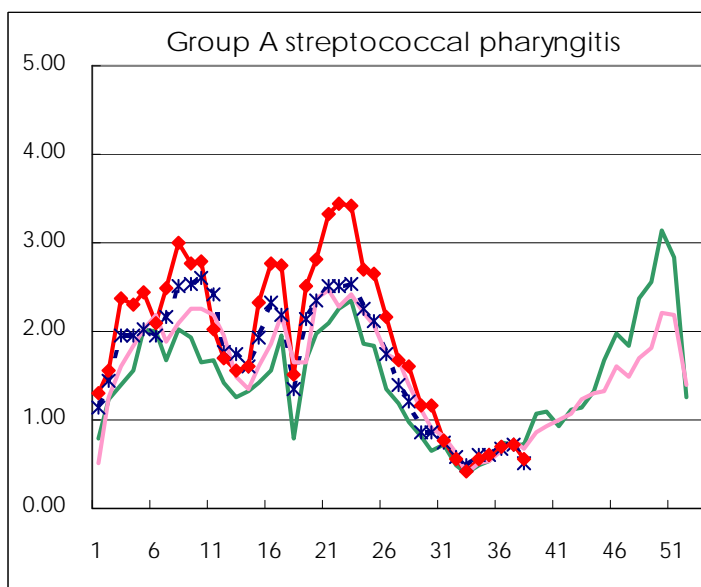
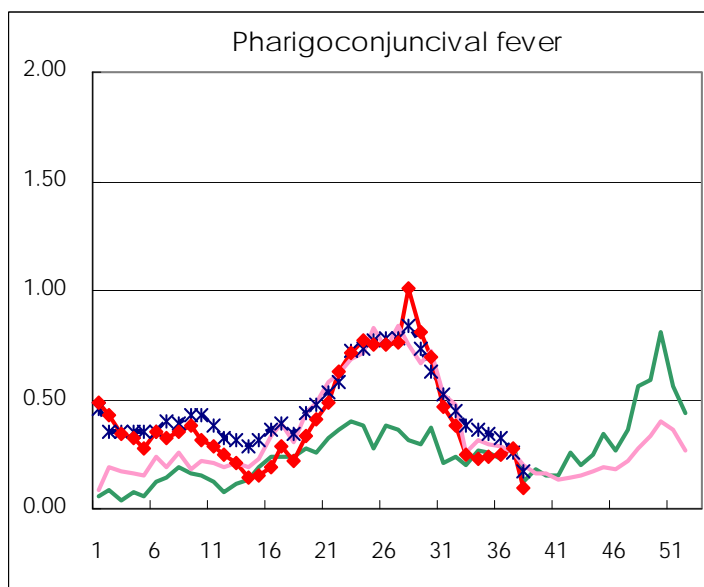
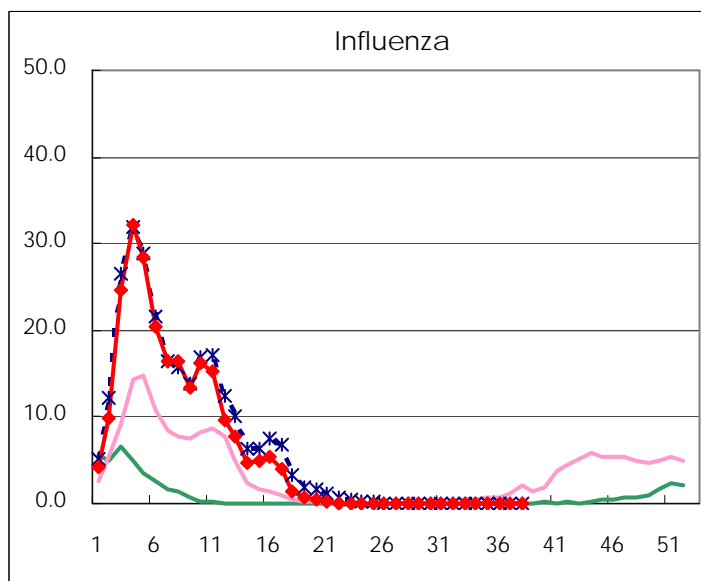
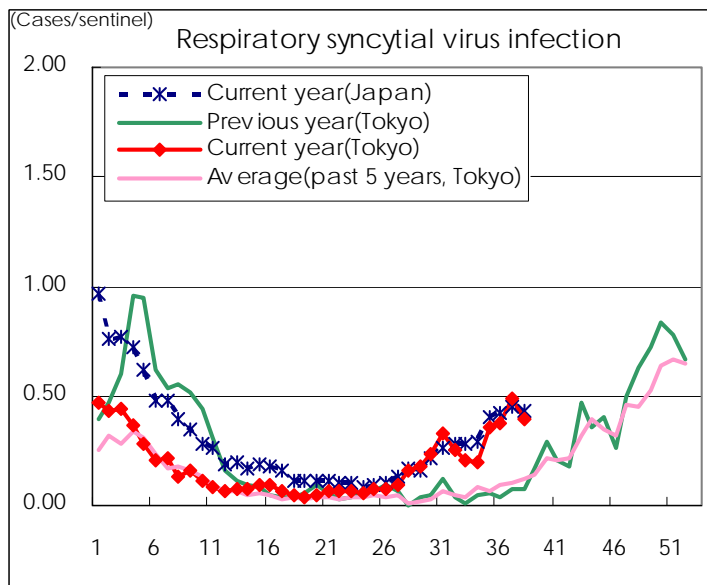
Category	Diseases	Tokyo				Japan		
		35th	36th	37th	38th	Cum 2011	38th	Cum 2011
V	Amebiasis	7	4	3	2	126	9	594
	Viral hepatitis(excluding hepatitis A and E)			1		29		183
	Acute encephalitis(excluding JE and WNE)					13		197
	Cryptosporidiosis					2		7
	Creutzfeldt-Jakob disease		1			13	1	93
	Severe invasive streptococcal infections(TSLS)	3				27	3	159
	Acquired immunodeficiency syndrome (AIDS)	8	7	5	9	291	9	1,046
	Giardiasis				1	9	1	49
	Meningococcal meningitis					2		7
	Congenital rubella syndrome							1
	Syphilis	5	4	8	2	169	2	546
	Tetanus					6	1	87
	Vancomycin-resistant S. aureus infection							
	Vancomycin-resistant Enterococcus infection					1		43
	Rubella					26	1	320
	Measles	5			1	165	3	400

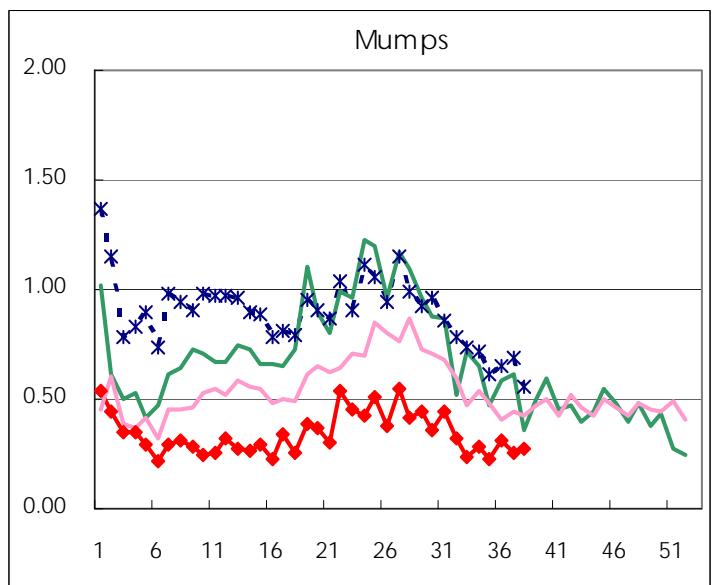
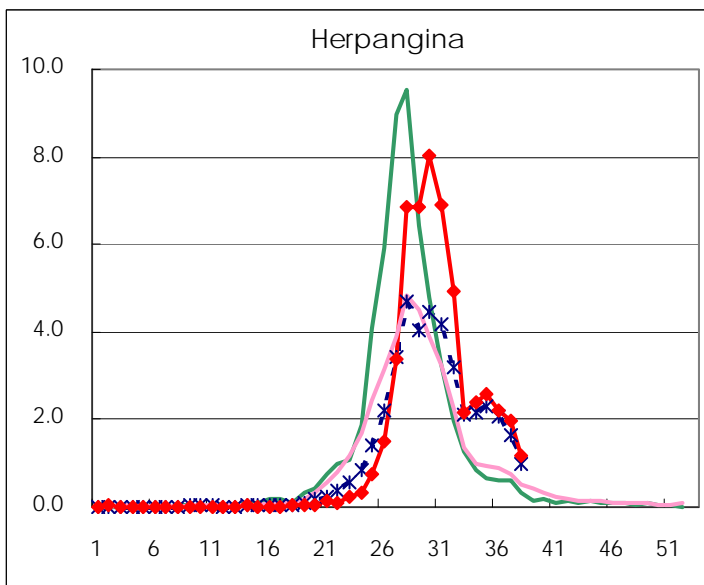
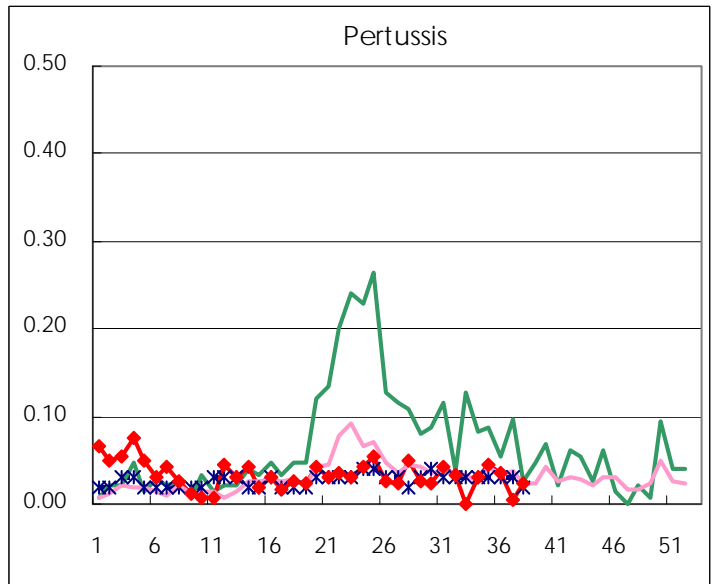
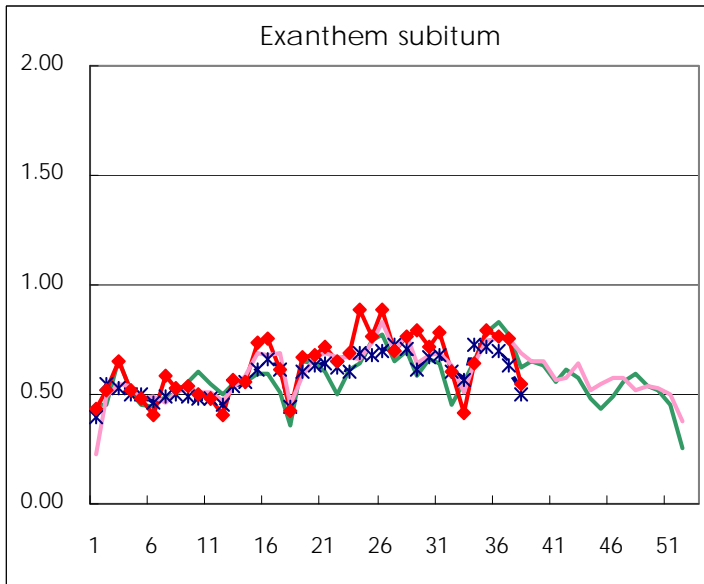
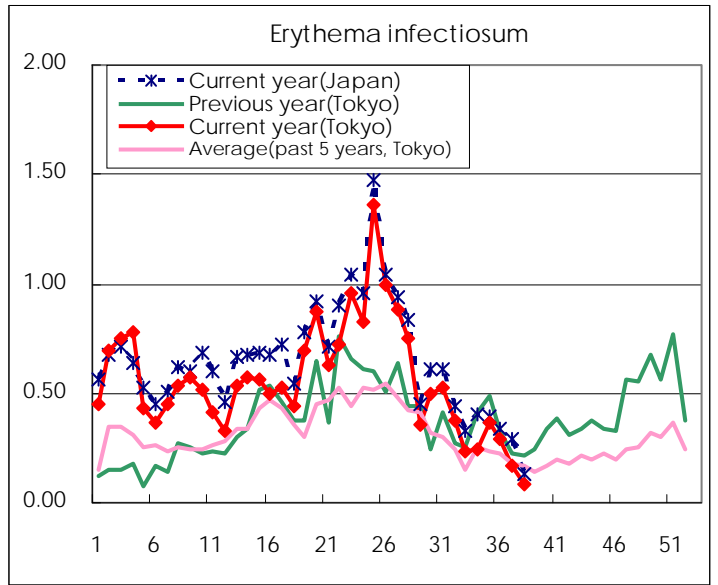
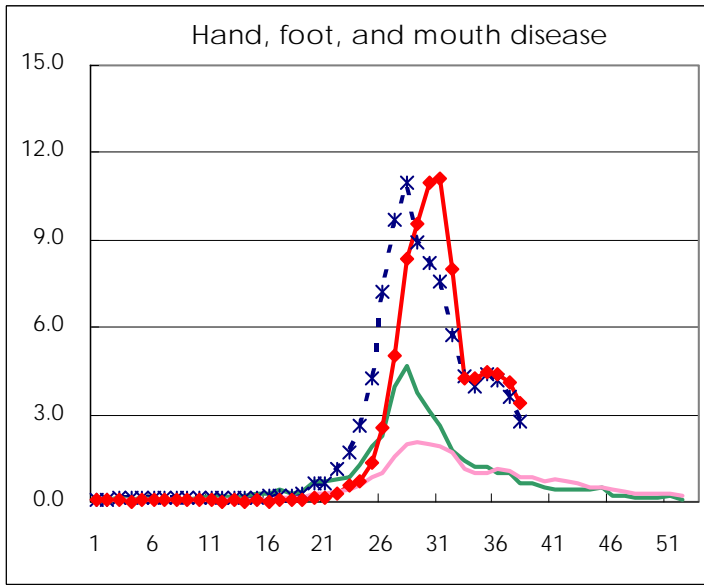
Number of patients with the diseases to be reported
by the designated clinics and hospitals

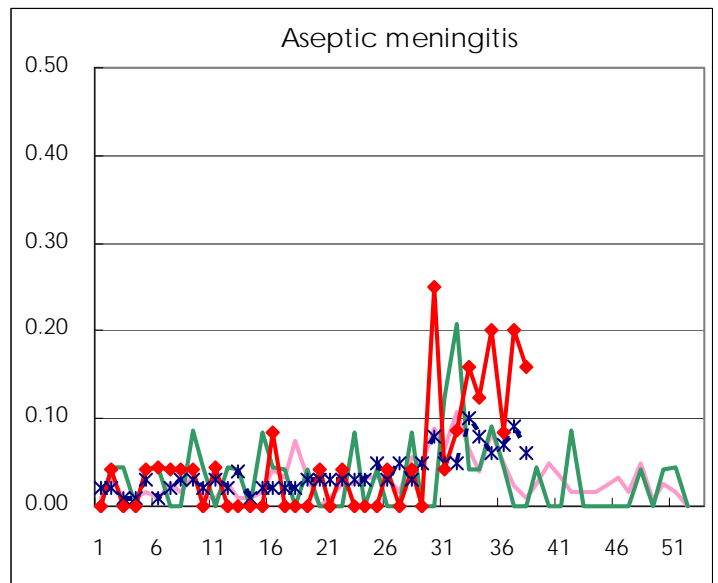
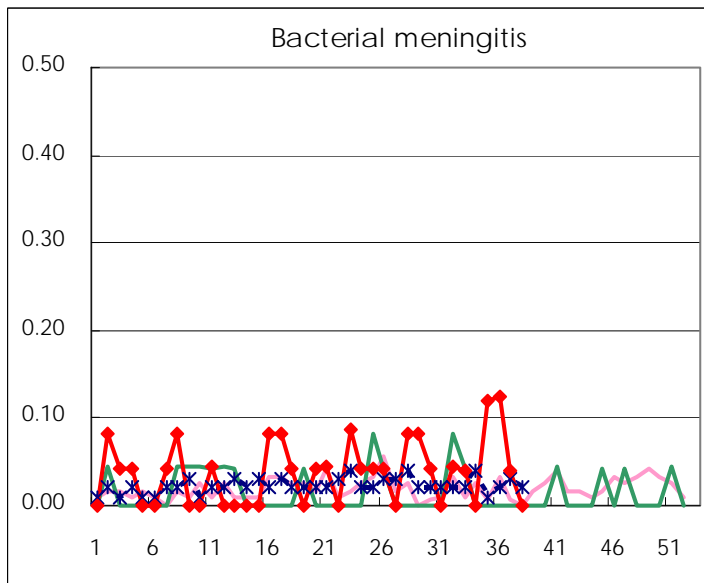
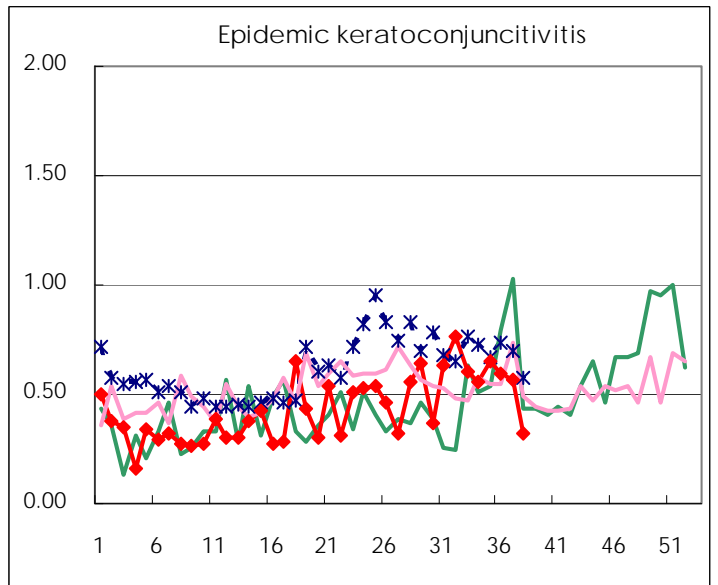
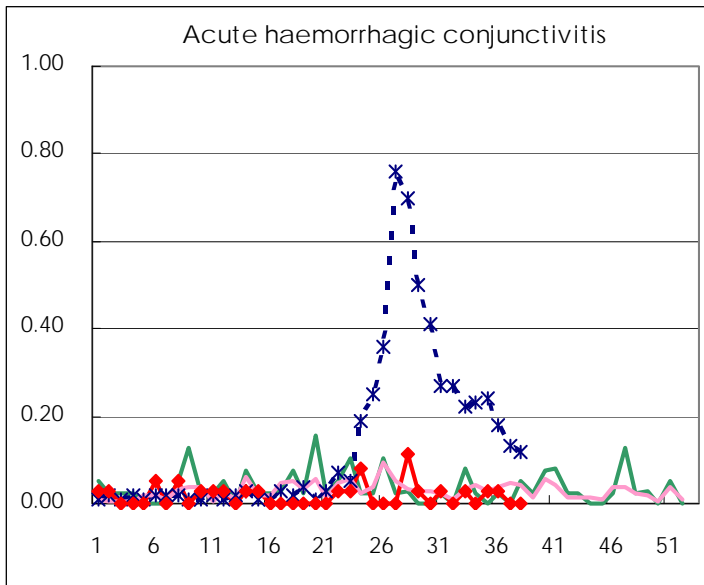
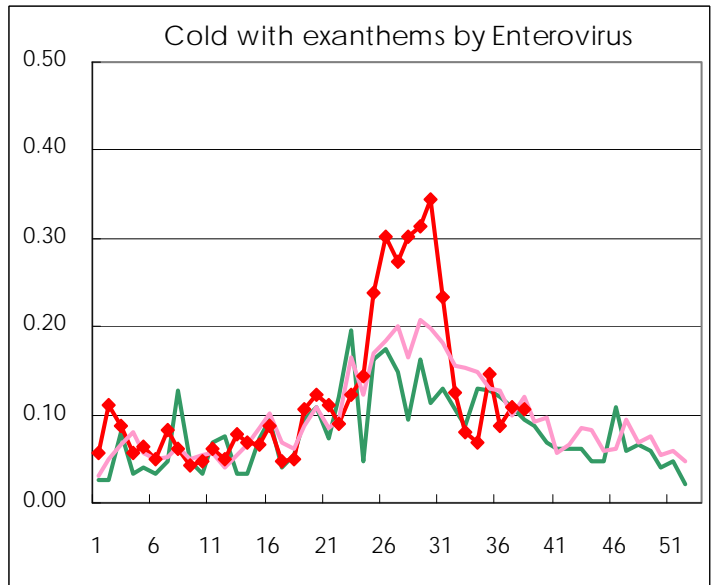
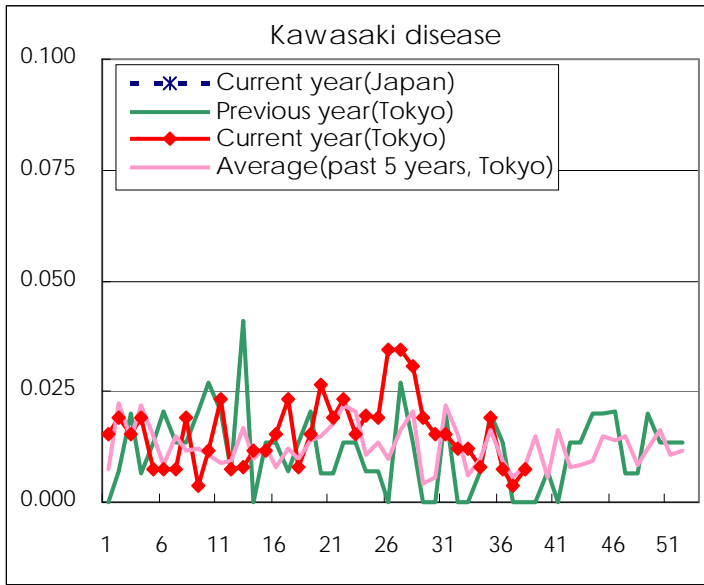
Diseases	2011				
	35th	36th	37th	38th	/sentinel
Respiratory syncytial virus infection	93	97	126	104	0.40
Pharyngoconjunctival fever	63	65	71	25	0.10
Group A streptococcal pharyngitis	159	181	182	145	0.56
Infectious gastroenteritis	740	850	877	615	2.36
Chickenpox	103	106	112	95	0.36
Hand, foot, and mouth disease	1,171	1,136	1,056	884	3.39
Erythema infectiosum	95	77	44	23	0.09
Exanthem subitum	206	199	194	142	0.54
Pertussis	12	9	1	6	0.02
Herpangina	675	573	502	308	1.18
Mumps	58	81	65	72	0.28
Kawasaki disease	5	2	1	2	0.01
Cold with exanthems by Enterovirus	38	23	28	28	0.11
Influenza	1	7	10	8	0.02
Acute hemorrhagic conjunctivitis	1	1			
Epidemic keratoconjunctivitis	24	22	21	12	0.32
Bacterial meningitis	3	3	1		
Aseptic meningitis	5	2	5	4	0.16
Mycoplasma pneumonia	24	33	34	32	1.28
Chlamydial pneumonia (excluding psittacosis)		1		1	0.04

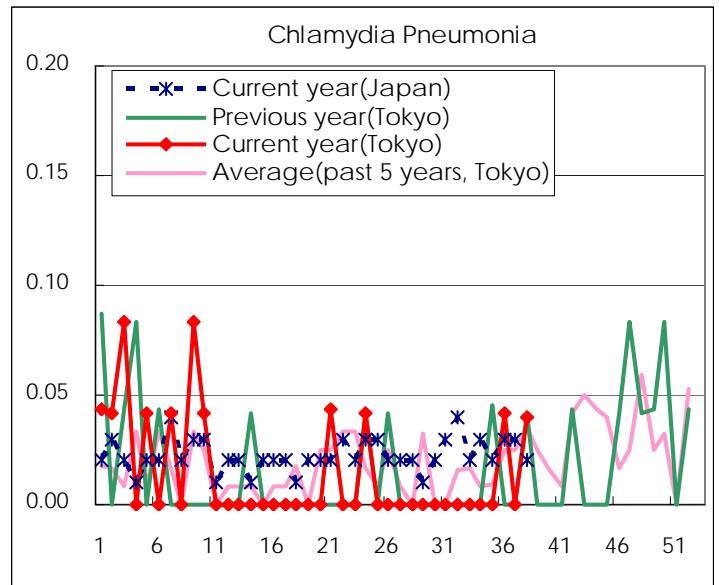
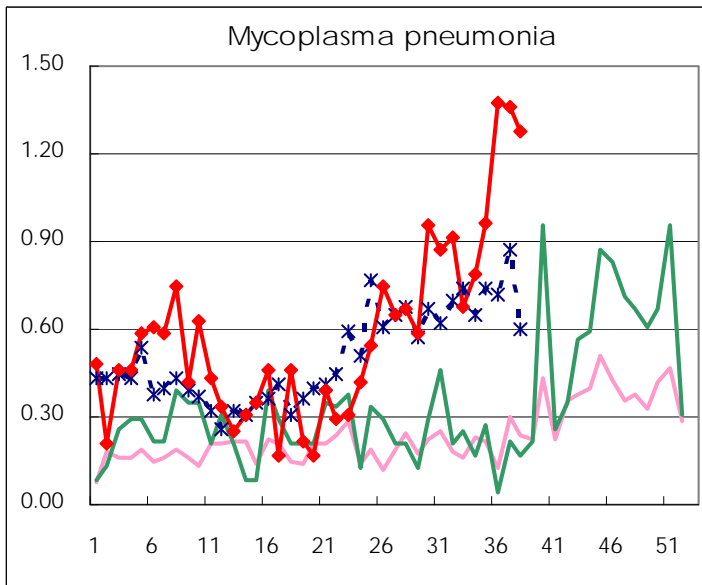
(Blank means 0.)

Disease Trend Graph (weekly reported cases per sentinel in comparison)









Number of sentinel facilities for weekly reporting		
Types of sentinels	Number of sentinels	Sentinels having reported
Pediatric	264	261
Influenza	419	415
Ophthalmic	39	37
Specially-designated	25	25

Tokyo Metropolitan Government
Infectious Disease Surveillance Center