

---

INFECTIOUS DISEASES WEEKLY REPORT

# TOKYO IDWR

Tokyo Metropolitan Infectious Disease Surveillance Center

## 6 October 2011 / Number 39

### Surveillance System in Tokyo, Japan

#### The infectious diseases which all physicians must report

All physicians must report to health centers the incidence of the diseases which are shown at page one. Health centers electronically report the individual cases to Tokyo Metropolitan Infectious Disease Surveillance Center.

#### The infectious diseases required to be reported by the sentinels

The numbers of patients who visit the sentinel clinics or hospitals during a week are reported to health centers in Tokyo. And they electronically report the numbers to Tokyo Metropolitan Infectious Disease Surveillance Center. We have about 500 sentinel clinics and hospitals in Tokyo.

1st Week is early January and 52nd Week is end of December.

Tokyo Metropolitan Institute of Public Health  
Epidemiological Information Office

TEL:81-3-3363-3213 FAX:81-3-5332-7365

e-mail:[idsc@tokyo-eiken.go.jp](mailto:idsc@tokyo-eiken.go.jp)

URL:[idsc.tokyo-eiken.go.jp/](http://idsc.tokyo-eiken.go.jp/)

---

## Number of patients with the diseases which all physicians must report

Category	Diseases	Tokyo				Japan		
		36th	37th	38th	39th	Cum 2011	39th	Cum 2011
I	Ebola hemorrhagic fever							
	Crimean-Congo hemorrhagic fever							
	Smallpox							
	South American hemorrhagic fever							
	Plague							
	Marburg disease							
	Lassa fever							
II	Acute poliomyelitis					1		1
	Tuberculosis	74	107	60	81	3,641	392	22,663
	Diphtheria							
	Severe Acute Respiratory Syndrome(SARS)							
	Avian influenza H5N1							
III	Cholera					1		8
	Shigellosis	6	1	1	1	52	7	226
	Enterohemorrhagic Escherichia coli infection	16	8	3	10	222	61	3,212
	Typhoid fever			1	1	5	2	18
	Paratyphoid fever					9		20
IV	Hepatitis E				1	8	1	48
	West Nile fever							
	Hepatitis A		1			23	1	154
	Echinococcosis					1		13
	Yellow fever							
	Psittacosis					3		11
	Omsk hemorrhagic fever							
	Relapsing fever							
	Kyasanur forest disease							
	Q fever							
	Rabies							
	Coccidioidomycosis					2		2
	Monkeypox							
	Hemorrhagic fever with renal syndrome							
	Western equine encephalitis							
	Tick-borne encephalitis							
	Anthrax							
	Chikungunya fever						1	6
	Scrub typhus(Tsutsugamushi disease)					8	3	170
	Dengue fever	2		1	2	19	6	78
	Eastern equine encephalitis							
	Avian influenza (excluding H5N1)							
	Nipah virus infection							
	Japanese spotted fever					1	5	111
	Japanese encephalitis					1	1	5
	Hantavirus pulmonary syndrome							
	Herpes B virus infection							
	Glanders							
	Brucellosis							
	Venezuelan equine encephalitis							
	Hendra virus infection							
	Epidemic typhus							
Botulism							3	
Malaria			1	1	19	5	57	
Tularemia								
Lyme disease					3		6	
Lyssavirus infection(excluding rabies)								
Rift valley fever								
Melioidosis							2	
Legionellosis	4	5	1	1	54	15	575	
Leptospirosis					3	1	16	
Rocky mountain spotted fever								

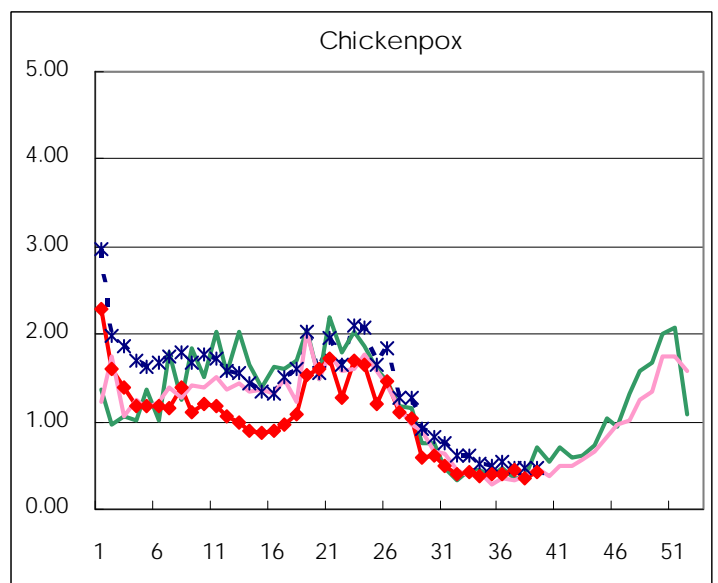
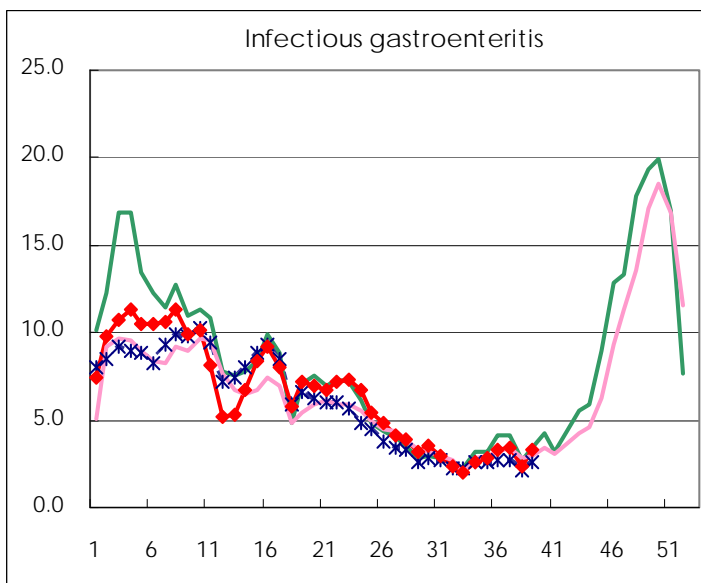
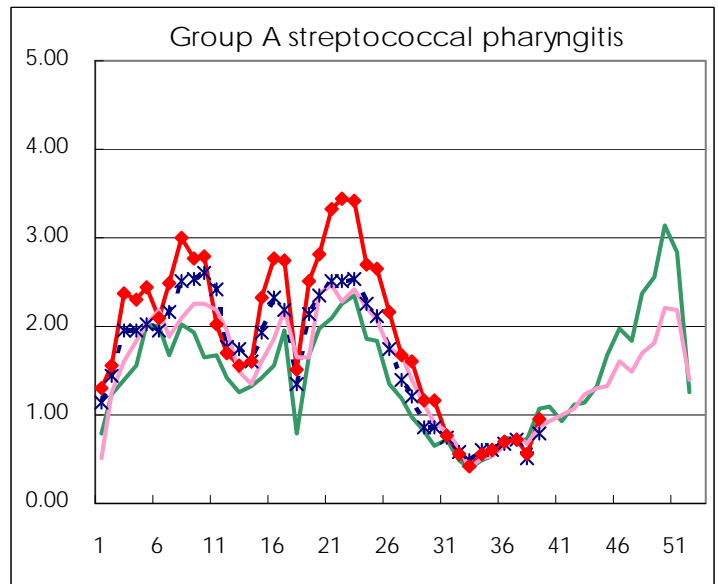
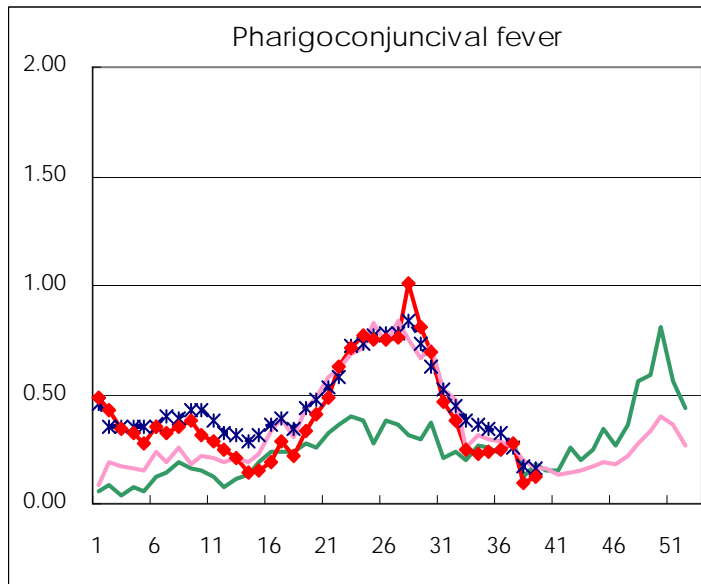
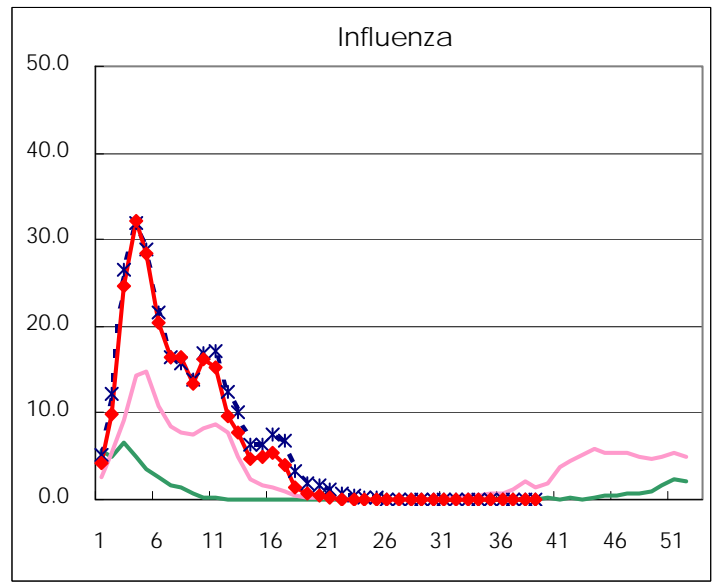
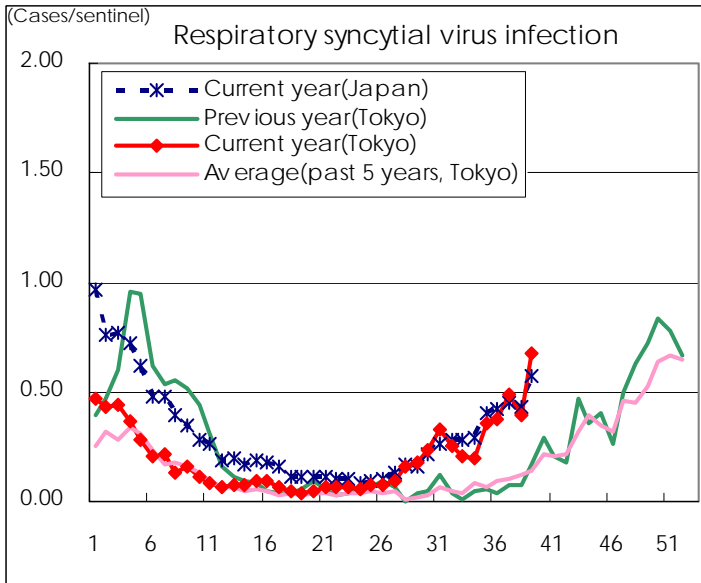
Category	Diseases	Tokyo				Japan		
		36th	37th	38th	39th	Cum 2011	39th	Cum 2011
V	Amebiasis	4	3	2	2	128	13	611
	Viral hepatitis(excluding hepatitis A and E)		1			29	5	190
	Acute encephalitis(excluding JE and WNE)					13	1	200
	Cryptosporidiosis					2		7
	Creutzfeldt-Jakob disease	1				13	2	95
	Severe invasive streptococcal infections(TSLS)				1	28		159
	Acquired immunodeficiency syndrome (AIDS)	7	5	9	11	302	15	1,075
	Giardiasis			1		9		50
	Meningococcal meningitis					2		7
	Congenital rubella syndrome							1
	Syphilis	4	8	2	4	173	12	561
	Tetanus					6	1	89
	Vancomycin-resistant S. aureus infection							
	Vancomycin-resistant Enterococcus infection					1	1	44
	Rubella				1	27	3	323
	Measles			1		165		400

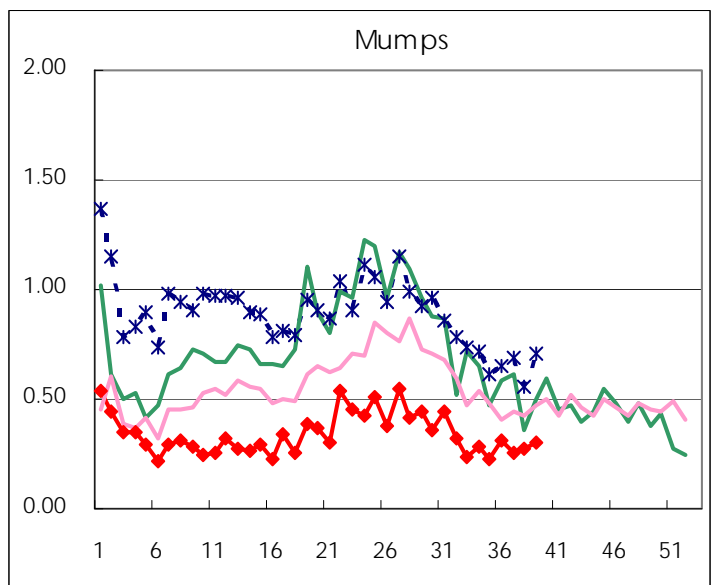
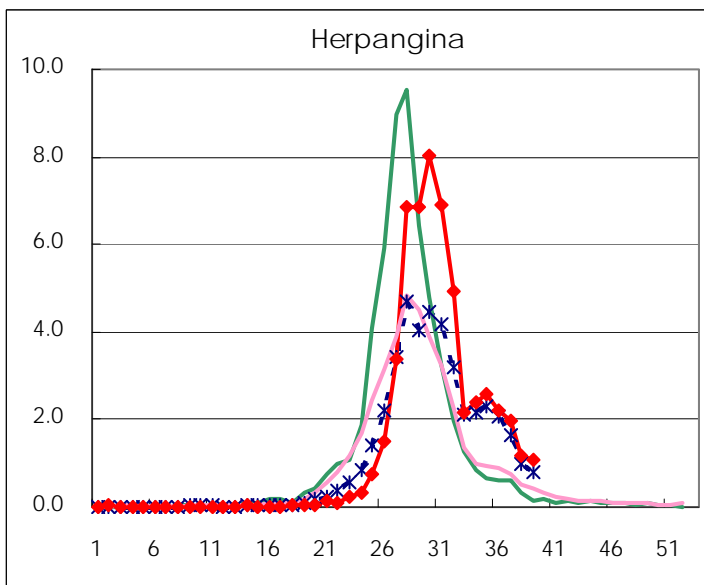
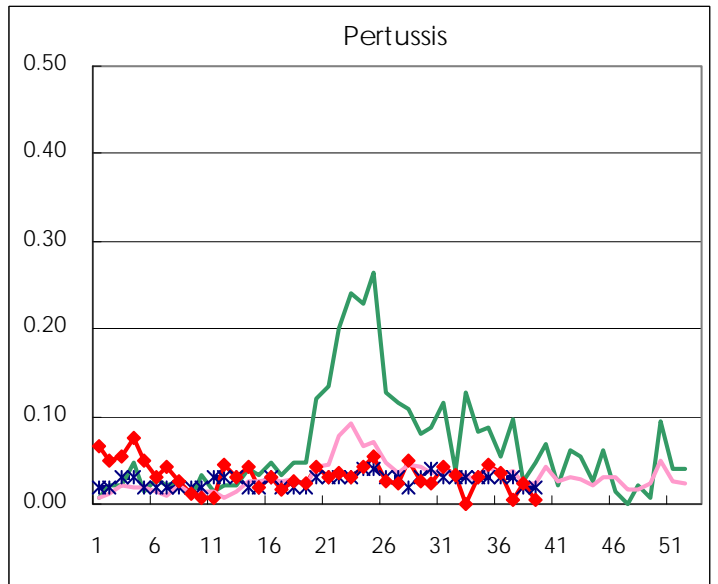
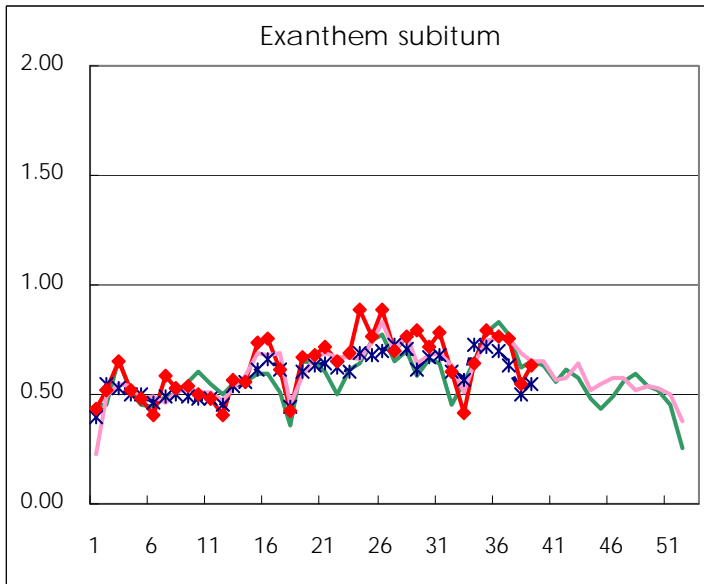
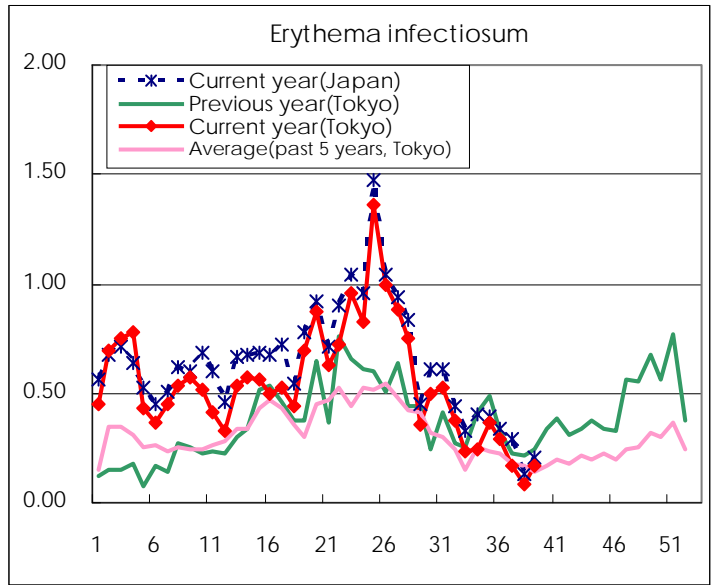
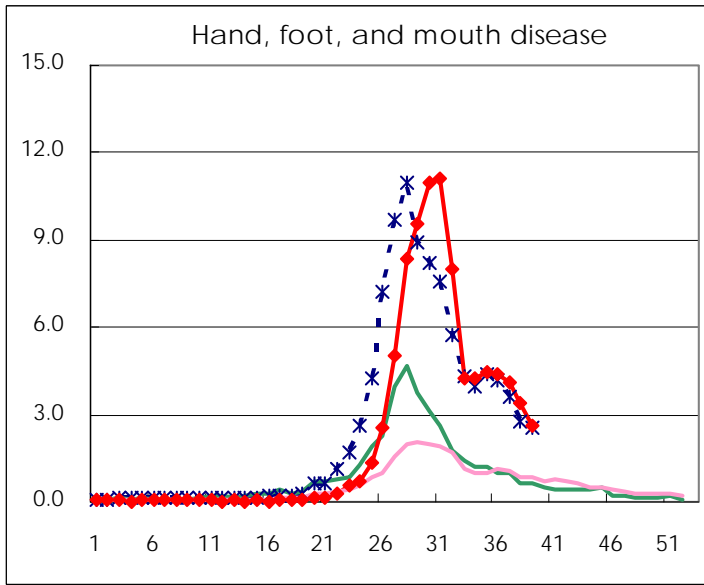
Number of patients with the diseases to be reported  
by the designated clinics and hospitals

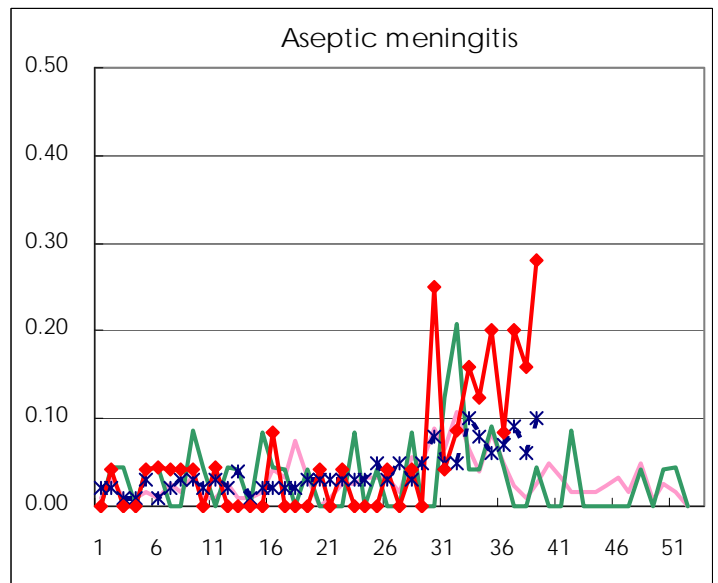
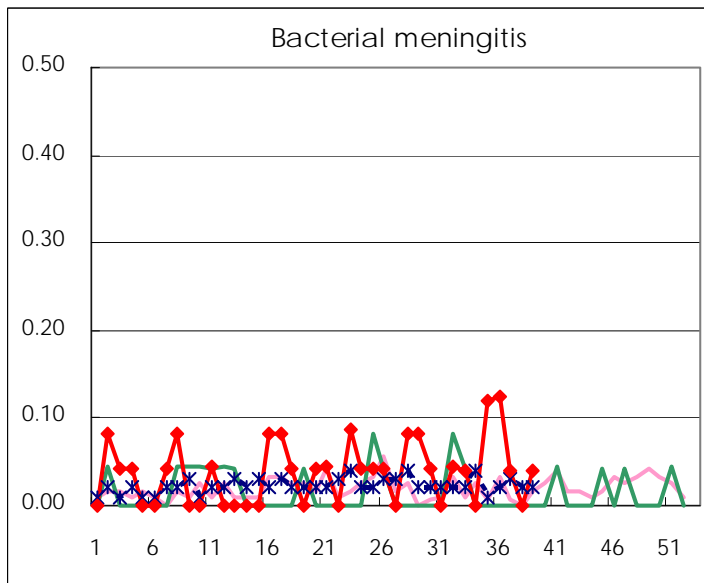
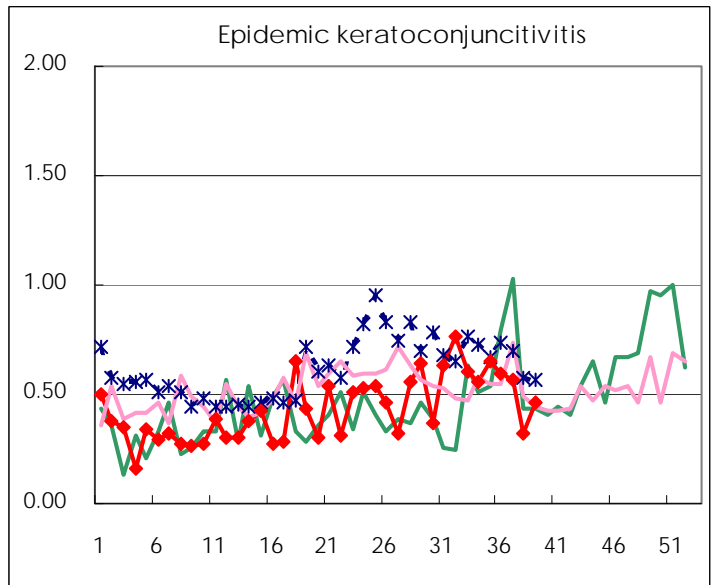
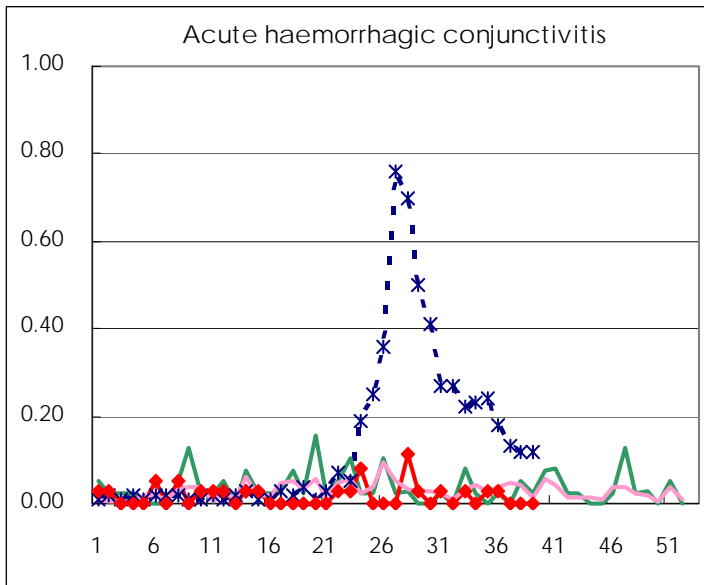
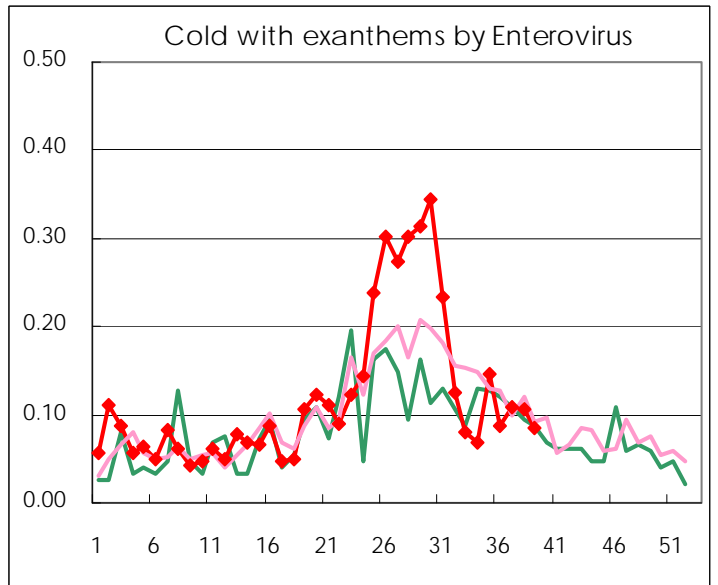
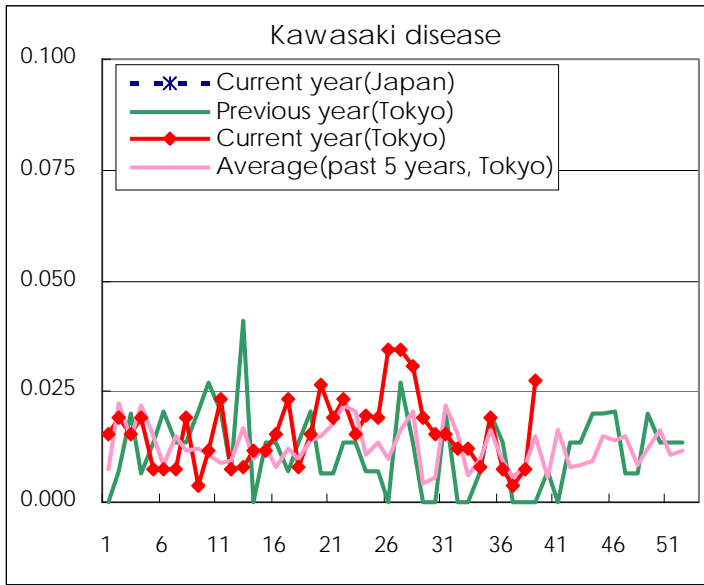
Diseases	2011				
	36th	37th	38th	39th	/sentinel
Respiratory syncytial virus infection	97	126	104	173	0.67
Pharyngoconjunctival fever	65	71	25	32	0.12
Group A streptococcal pharyngitis	181	182	145	243	0.95
Infectious gastroenteritis	850	877	615	862	3.35
Chickenpox	106	112	95	111	0.43
Hand, foot, and mouth disease	1,136	1,056	884	676	2.63
Erythema infectiosum	77	44	23	44	0.17
Exanthem subitum	199	194	142	163	0.63
Pertussis	9	1	6	1	0.004
Herpangina	573	502	308	274	1.07
Mumps	81	65	72	78	0.30
Kawasaki disease	2	1	2	7	0.03
Cold with exanthems by Enterovirus	23	28	28	22	0.09
Influenza	7	10	8	6	0.01
Acute hemorrhagic conjunctivitis	1				
Epidemic keratoconjunctivitis	22	21	12	17	0.46
Bacterial meningitis	3	1		1	0.04
Aseptic meningitis	2	5	4	7	0.28
Mycoplasma pneumonia	33	37	34	32	1.28
Chlamydial pneumonia (excluding psittacosis)	1		1	1	0.04

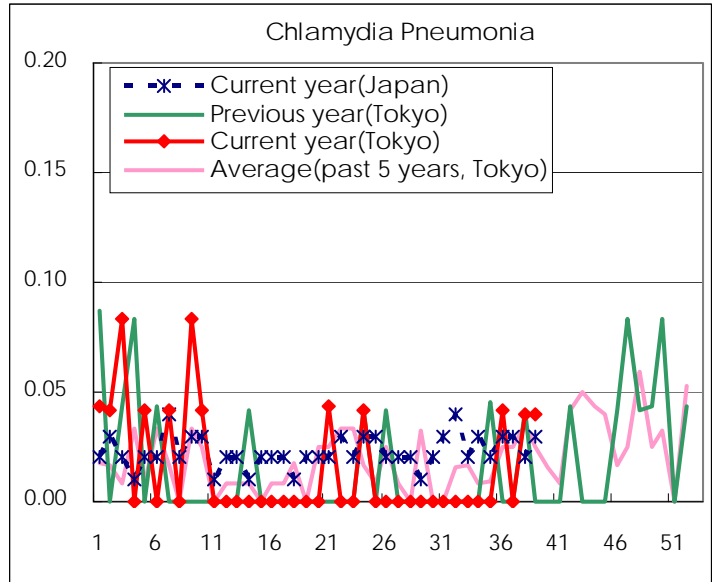
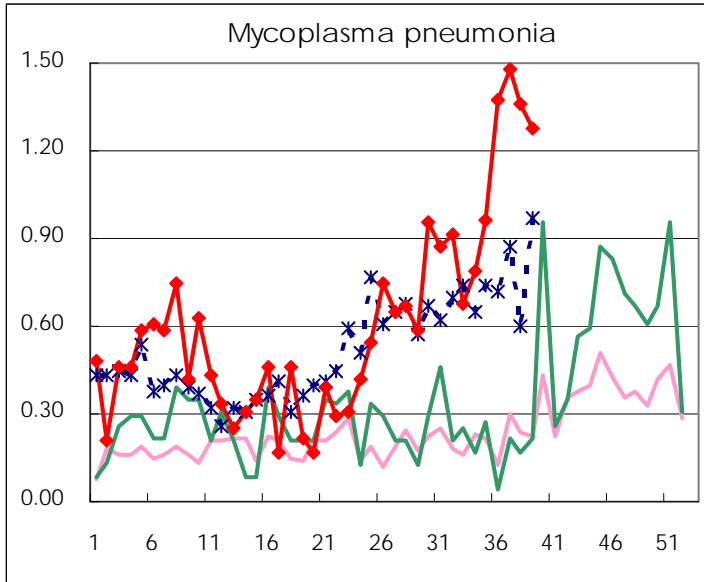
( Blank means 0. )

# Disease Trend Graph (weekly reported cases per sentinel in comparison)









Number of sentinel facilities for weekly reporting		
Types of sentinels	Number of sentinels	Sentinels having reported
Pediatric	264	257
Influenza	419	411
Ophthalmic	39	37
Specially-designated	25	25

Tokyo Metropolitan Government  
**Infectious Disease Surveillance Center**