

---

INFECTIOUS DISEASES WEEKLY REPORT

# TOKYO iDWR

Tokyo Metropolitan Infectious Disease Surveillance Center

## 27 October 2011 / Number 42

### Surveillance System in Tokyo, Japan

#### The infectious diseases which all physicians must report

All physicians must report to health centers the incidence of the diseases which are shown at page one. Health centers electronically report the individual cases to Tokyo Metropolitan Infectious Disease Surveillance Center.

#### The infectious diseases required to be reported by the sentinels

The numbers of patients who visit the sentinel clinics or hospitals during a week are reported to health centers in Tokyo. And they electronically report the numbers to Tokyo Metropolitan Infectious Disease Surveillance Center. We have about 500 sentinel clinics and hospitals in Tokyo.

1st Week is early January and 52nd Week is end of December.

Tokyo Metropolitan Institute of Public Health  
Epidemiological Information Office

TEL:81-3-3363-3213 FAX:81-3-5332-7365  
e-mail:[idsc@tokyo-eiken.go.jp](mailto:idsc@tokyo-eiken.go.jp)  
URL:[idsc.tokyo-eiken.go.jp/](http://idsc.tokyo-eiken.go.jp/)

---

## Number of patients with the diseases which all physicians must report

Category	Diseases	Tokyo				Japan		
		39th	40th	41st	42nd	Cum 2011	42nd	Cum 2011
I	Ebola hemorrhagic fever							
	Crimean-Congo hemorrhagic fever							
	Smallpox							
	South American hemorrhagic fever							
	Plague							
	Marburg disease							
	Lassa fever							
II	Acute poliomyelitis					1		1
	Tuberculosis	99	103	71	76	3,995	385	24,558
	Diphtheria							
	Severe Acute Respiratory Syndrome(SARS)							
	Avian influenza H5N1							
III	Cholera					1		8
	Shigellosis	1	2	4	7	65	9	250
	Enterohemorrhagic Escherichia coli infection	10	8	4	3	237	55	3,454
	Typhoid fever	1				5	1	20
	Paratyphoid fever					9		20
IV	Hepatitis E	1				8		48
	West Nile fever							
	Hepatitis A					23	1	160
	Echinococcosis					1		13
	Yellow fever							
	Psittacosis					3		12
	Omsk hemorrhagic fever							
	Relapsing fever							
	Kyasanur forest disease							
	Q fever							
	Rabies							
	Coccidioidomycosis					2		2
	Monkeypox							
	Hemorrhagic fever with renal syndrome							
	Western equine encephalitis							
	Tick-borne encephalitis							
	Anthrax							
	Chikungunya fever							6
	Scrub typhus(Tsutsugamushi disease)					8	6	178
	Dengue fever	2			1	20	3	89
	Eastern equine encephalitis							
	Avian influenza (excluding H5N1)							
	Nipah virus infection							
	Japanese spotted fever					1	2	123
	Japanese encephalitis					1		7
	Hantavirus pulmonary syndrome							
	Herpes B virus infection							
	Glanders							
	Brucellosis							
	Venezuelan equine encephalitis							
	Hendra virus infection							
Epidemic typhus								
Botulism							3	
Malaria	1	1	1	2	23	1	67	
Tularemia								
Lyme disease					3		7	
Lyssavirus infection(excluding rabies)								
Rift valley fever								
Melioidosis							2	
Legionellosis	1		1	2	57	13	639	
Leptospirosis				1	4	2	20	
Rocky mountain spotted fever								

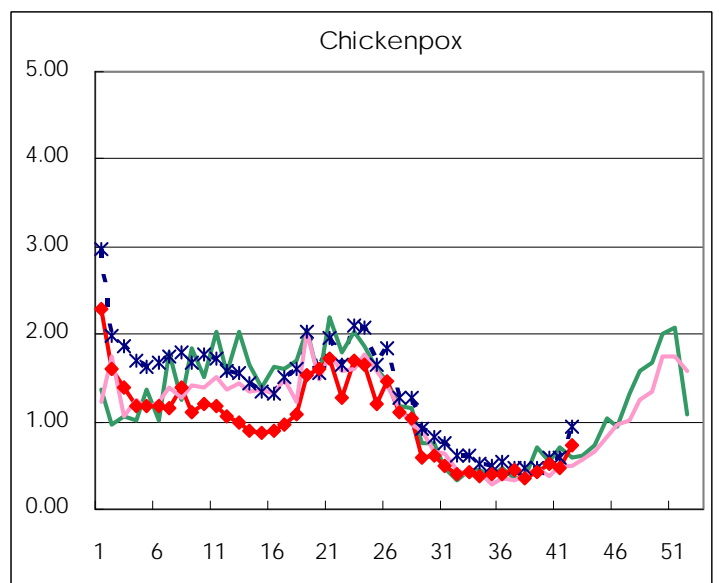
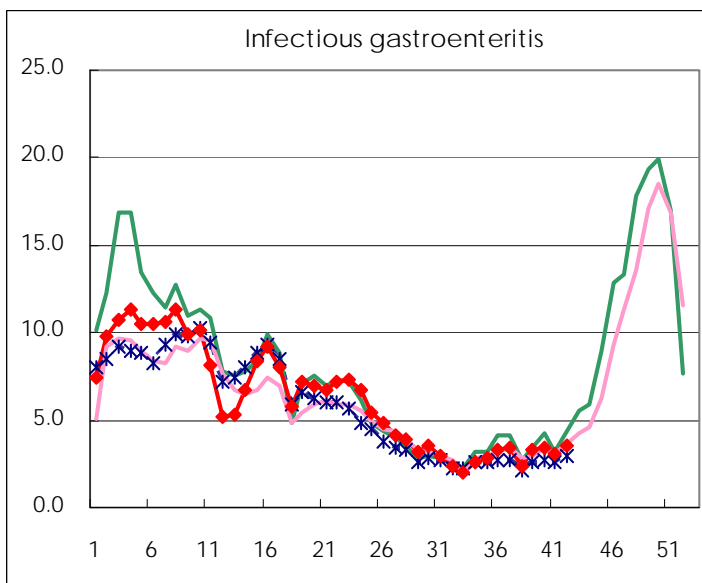
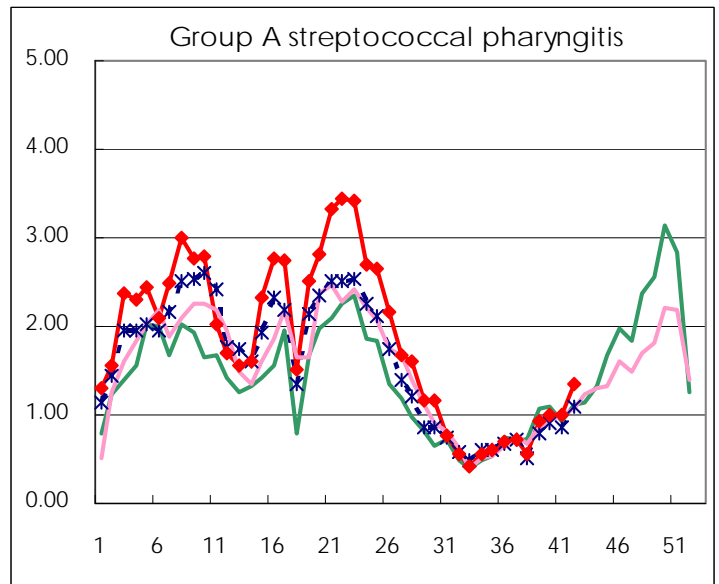
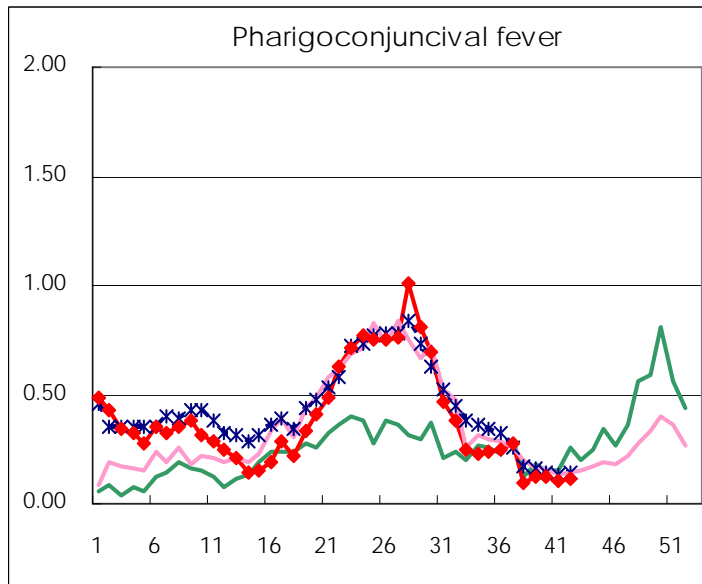
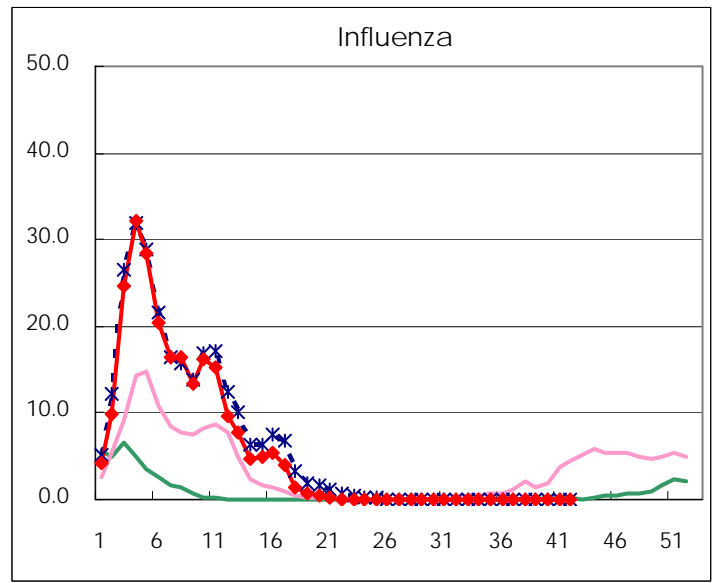
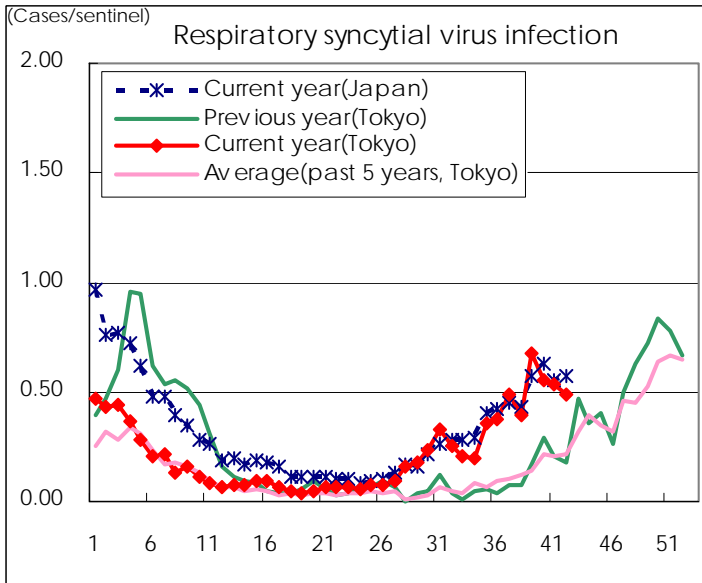
Category	Diseases	Tokyo				Japan		
		39th	40th	41st	42nd	Cum 2011	42nd	Cum 2011
V	Amebiasis	2	6	1	4	139	13	660
	Viral hepatitis(excluding hepatitis A and E)		1			30		198
	Acute encephalitis(excluding JE and WNE)			1		14	2	210
	Cryptosporidiosis					2		7
	Creutzfeldt-Jakob disease					13	3	108
	Severe invasive streptococcal infections(TSLS)	1				28	3	167
	Acquired immunodeficiency syndrome (AIDS)	11	10	2	8	322	19	1,159
	Giardiasis					9		52
	Meningococcal meningitis					2		7
	Congenital rubella syndrome							1
	Syphilis	4	7	4	6	190	14	626
	Tetanus					6		95
	Vancomycin-resistant S. aureus infection							
	Vancomycin-resistant Enterococcus infection					1	2	49
	Rubella	1				27	4	332
	Measles		2	2	1	169	6	414

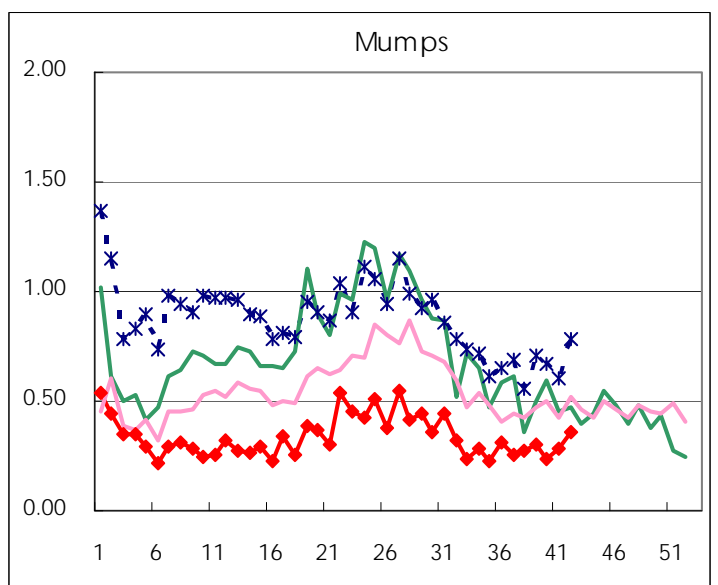
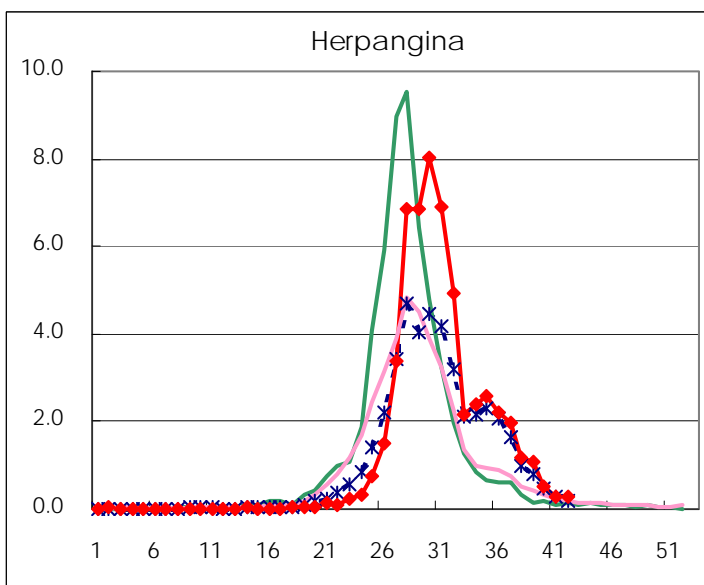
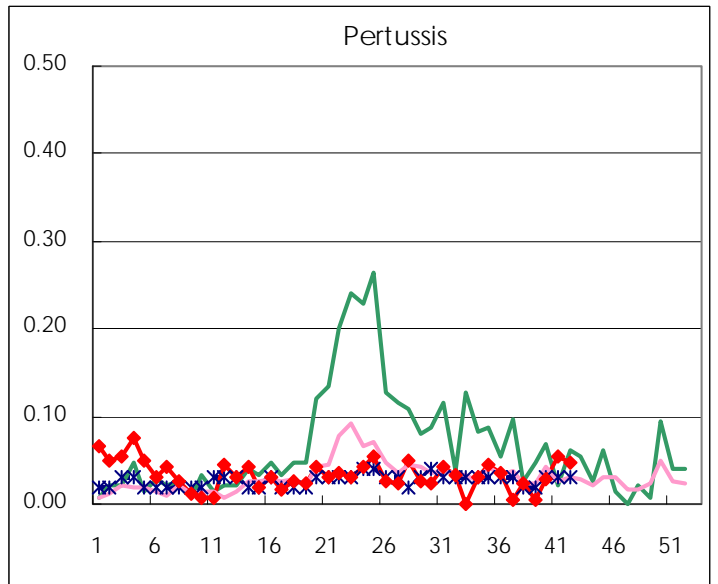
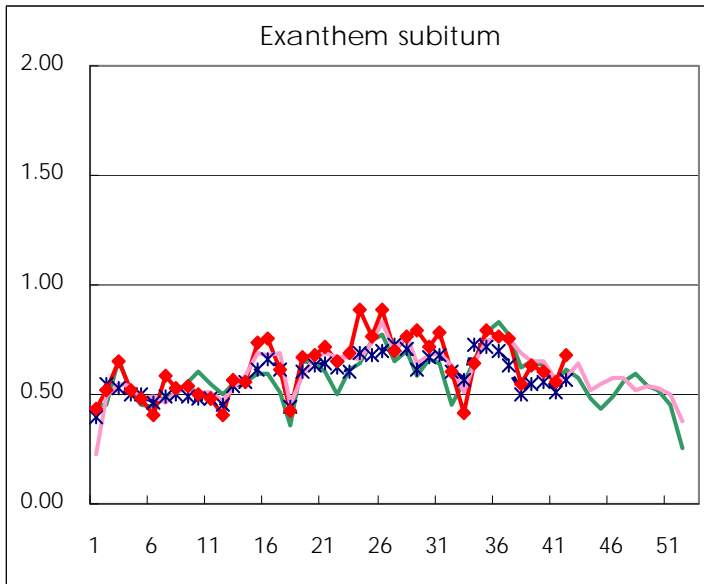
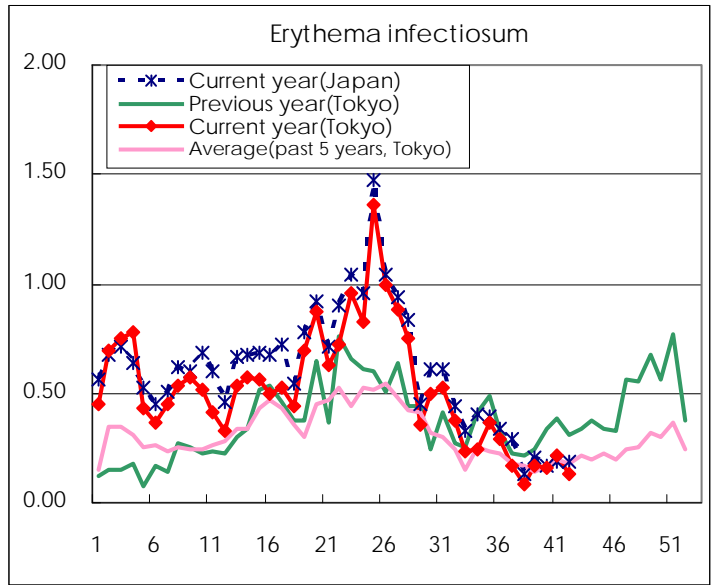
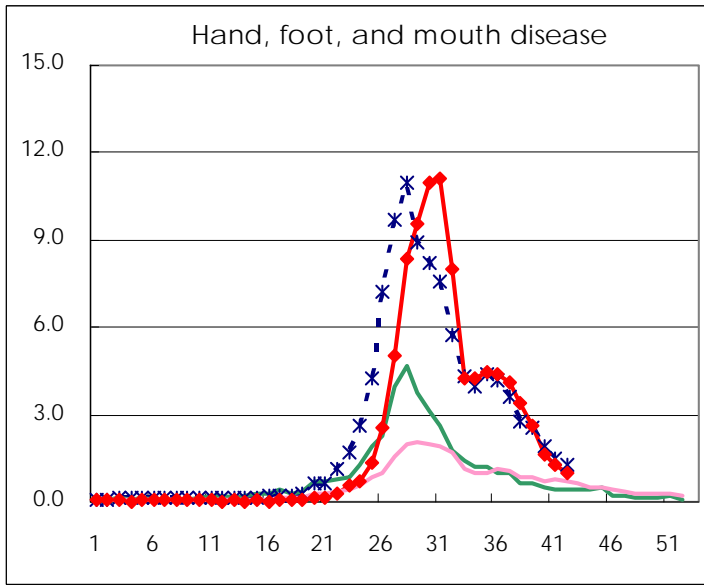
Number of patients with the diseases to be reported  
by the designated clinics and hospitals

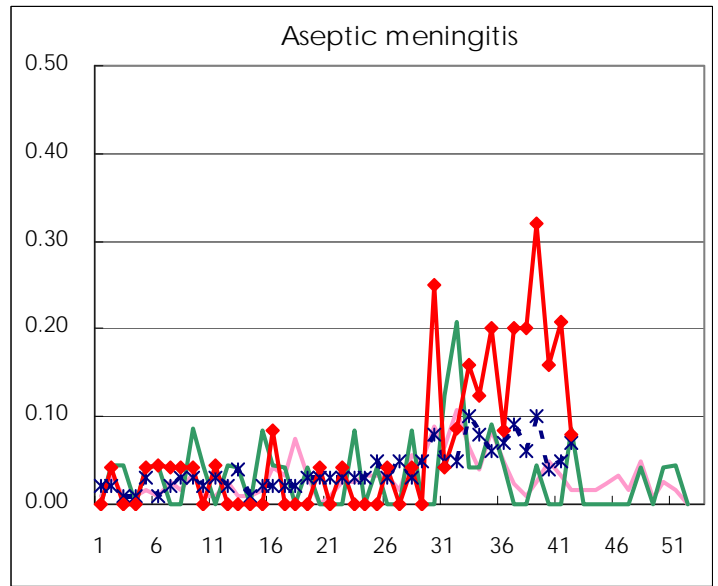
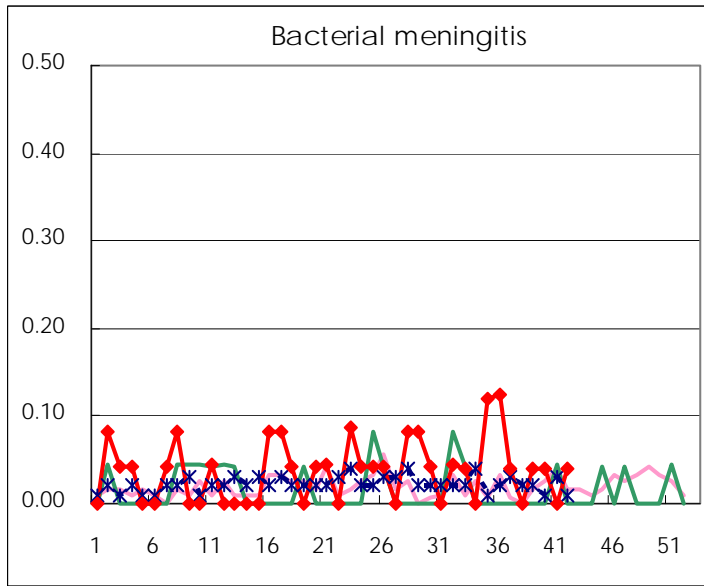
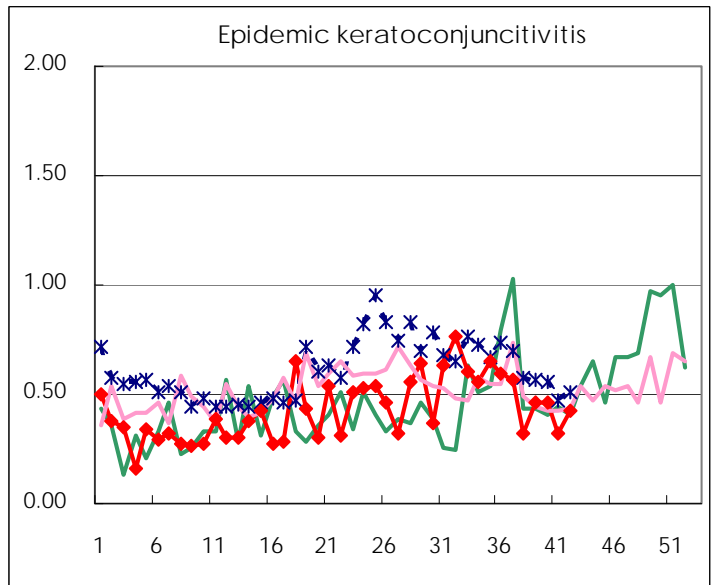
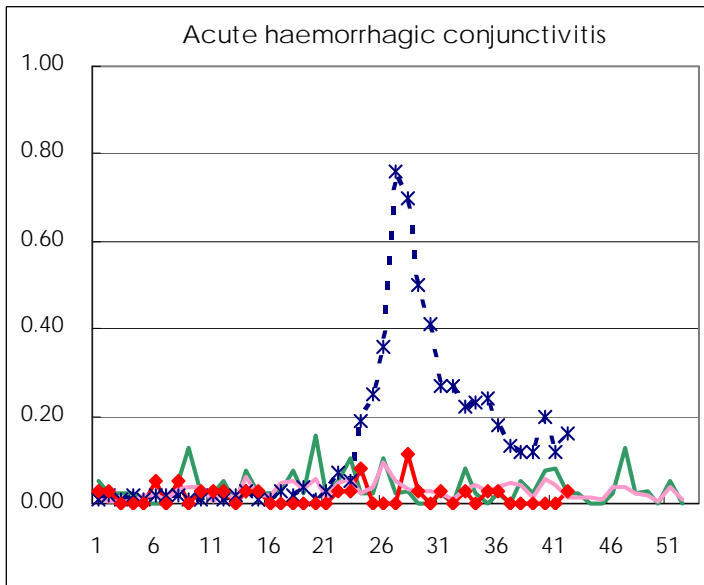
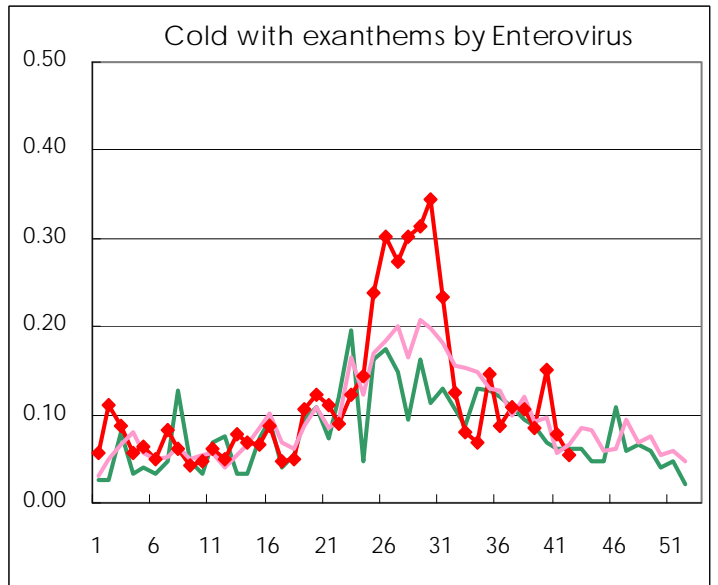
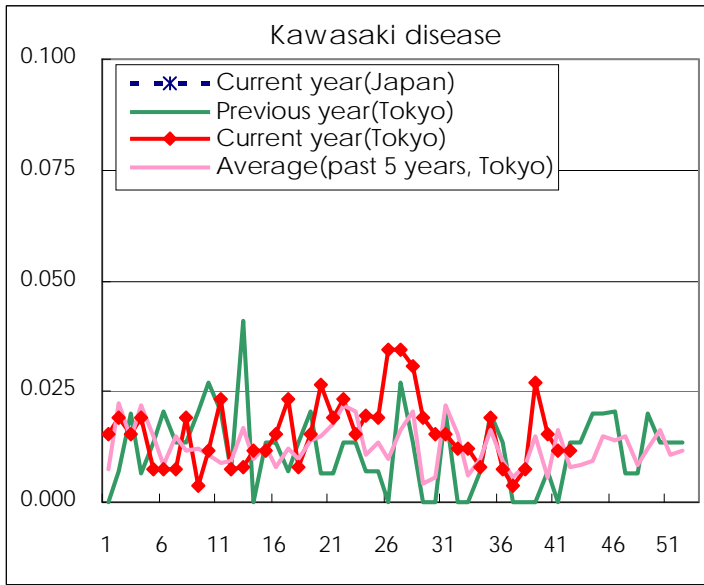
Diseases	2011				
	39th	40th	41st	42nd	/sentinel
Respiratory syncytial virus infection	175	144	137	128	0.49
Pharyngoconjunctival fever	32	31	28	29	0.11
Group A streptococcal pharyngitis	243	257	256	349	1.34
Infectious gastroenteritis	862	880	796	907	3.49
Chickenpox	111	135	124	192	0.74
Hand, foot, and mouth disease	680	416	321	256	0.98
Erythema infectiosum	44	40	56	33	0.13
Exanthem subitum	163	156	144	177	0.68
Pertussis	1	7	14	12	0.05
Herpangina	277	133	75	71	0.27
Mumps	78	61	74	93	0.36
Kawasaki disease	7	4	3	3	0.01
Cold with exanths by Enterovirus	22	39	20	14	0.05
Influenza	6	7	27	15	0.04
Acute hemorrhagic conjunctivitis				1	0.03
Epidemic keratoconjunctivitis	17	17	12	16	0.42
Bacterial meningitis	1	1		1	0.04
Aseptic meningitis	8	4	5	2	0.08
Mycoplasma pneumonia	32	55	55	32	1.28
Chlamydial pneumonia (excluding psittacosis)	1				

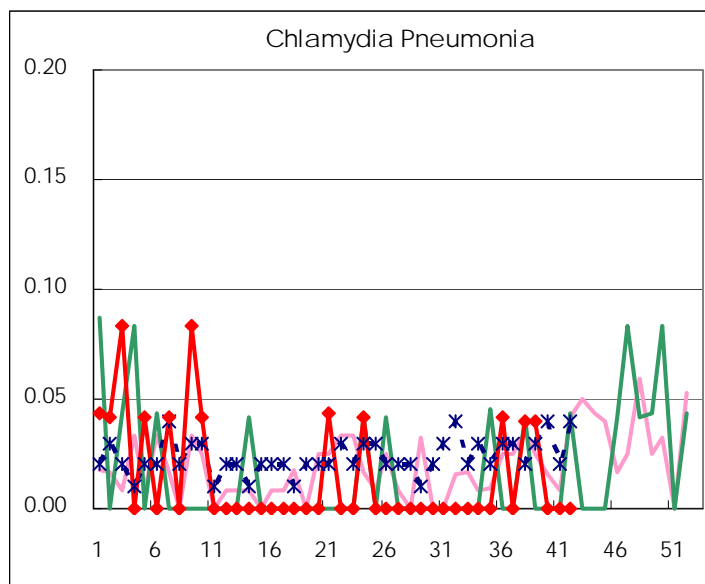
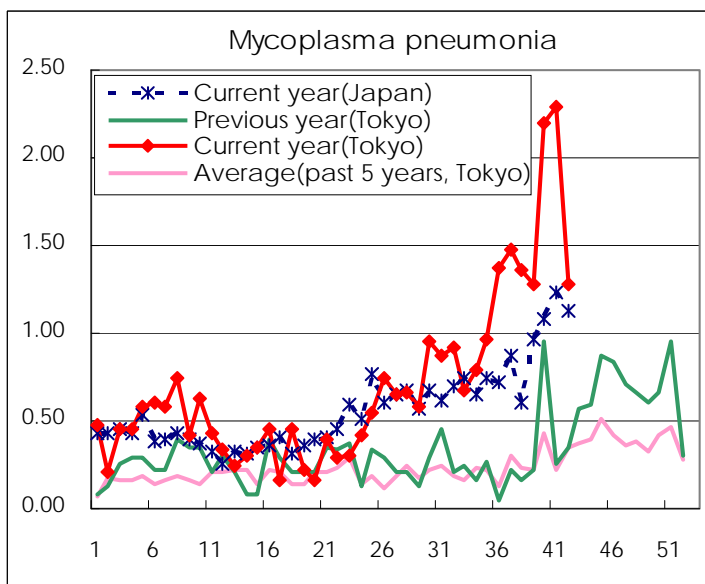
( Blank means 0. )

# Disease Trend Graph (weekly reported cases per sentinel in comparison)









Number of sentinel facilities for weekly reporting		
Types of sentinels	Number of sentinels	Sentinels having reported
Pediatric	264	260
Influenza	419	414
Ophthalmic	39	38
Specially-designated	25	25

Tokyo Metropolitan Government  
**Infectious Disease Surveillance Center**