

---

INFECTIOUS DISEASES WEEKLY REPORT

# TOKYO IDWR

Tokyo Metropolitan Infectious Disease Surveillance Center

## 25 November 2011 / Number 46

### Surveillance System in Tokyo, Japan

The infectious diseases which all physicians must report

All physicians must report to health centers the incidence of the diseases which are shown at page one. Health centers electronically report the individual cases to Tokyo Metropolitan Infectious Disease Surveillance Center.

The infectious diseases required to be reported by the sentinels

The numbers of patients who visit the sentinel clinics or hospitals during a week are reported to health centers in Tokyo. And they electronically report the numbers to Tokyo Metropolitan Infectious Disease Surveillance Center. We have about 500 sentinel clinics and hospitals in Tokyo.

1st Week is early January and 52nd Week is end of December.

Tokyo Metropolitan Institute of Public Health  
Epidemiological Information Office

TEL:81-3-3363-3213 FAX:81-3-5332-7365  
e-mail:[idsc@tokyo-eiken.go.jp](mailto:idsc@tokyo-eiken.go.jp)  
URL:[idsc.tokyo-eiken.go.jp/](http://idsc.tokyo-eiken.go.jp/)

---

## Number of patients with the diseases which all physicians must report

Category	Diseases	Tokyo				Japan		
		43rd	44th	45th	46th	Cum 2011	46th	Cum 2011
I	Ebola hemorrhagic fever							
	Crimean-Congo hemorrhagic fever							
	Smallpox							
	South American hemorrhagic fever							
	Plague							
	Marburg disease							
	Lassa fever							
II	Acute poliomyelitis					1		1
	Tuberculosis	78	78	92	70	4,394	400	27,001
	Diphtheria							
	Severe Acute Respiratory Syndrome(SARS)							
	Avian influenza H5N1							
III	Cholera	2				3		10
	Shigellosis	3	3	3	2	76	3	274
	Enterohemorrhagic Escherichia coli infection	1	3	1	5	247	54	3,675
	Typhoid fever					5		21
	Paratyphoid fever					9		20
IV	Hepatitis E	1				9	1	51
	West Nile fever							
	Hepatitis A	1		1		25		167
	Echinococcosis					1		13
	Yellow fever							
	Psittacosis					3		13
	Omsk hemorrhagic fever							
	Relapsing fever							
	Kyasanur forest disease							
	Q fever							1
	Rabies							
	Coccidioidomycosis					2		2
	Monkeypox							
	Hemorrhagic fever with renal syndrome							
	Western equine encephalitis							
	Tick-borne encephalitis							
	Anthrax							
	Chikungunya fever						1	9
	Scrub typhus(Tsutsugamushi disease)			1	1	10	25	265
	Dengue fever	1				21		90
	Eastern equine encephalitis							
	Avian influenza (excluding H5N1)							
	Nipah virus infection							
	Japanese spotted fever					1	2	154
	Japanese encephalitis					1		8
	Hantavirus pulmonary syndrome							
	Herpes B virus infection							
	Glanders							
	Brucellosis							
	Venezuelan equine encephalitis							
	Hendra virus infection							
Epidemic typhus								
Botulism						1	5	
Malaria	1				24	1	71	
Tularemia								
Lyme disease					3		7	
Lyssavirus infection(excluding rabies)								
Rift valley fever								
Melioidosis							3	
Legionellosis	4		2		63	9	710	
Leptospirosis			1		5		24	
Rocky mountain spotted fever								

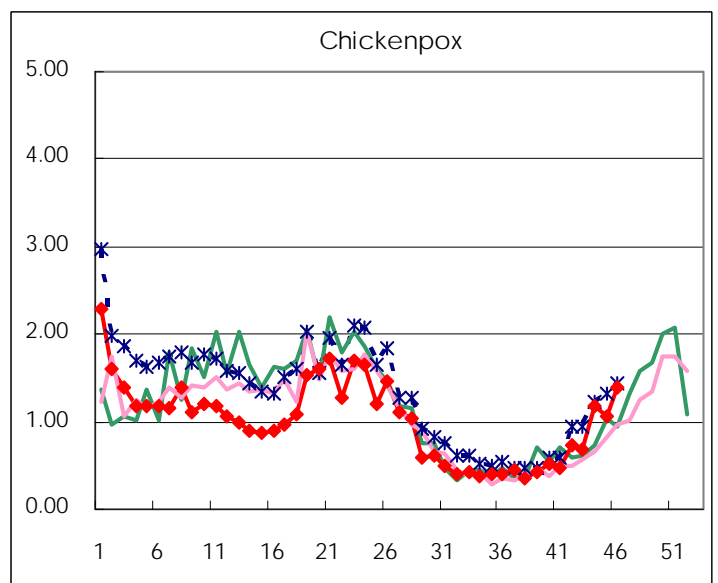
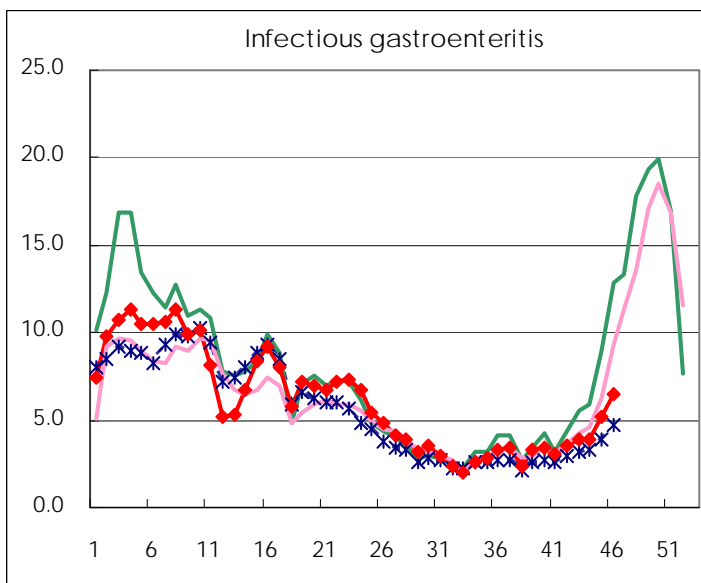
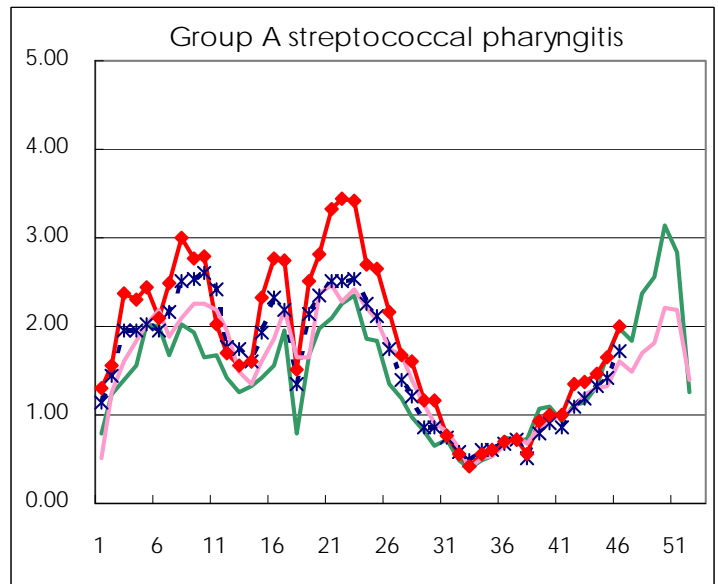
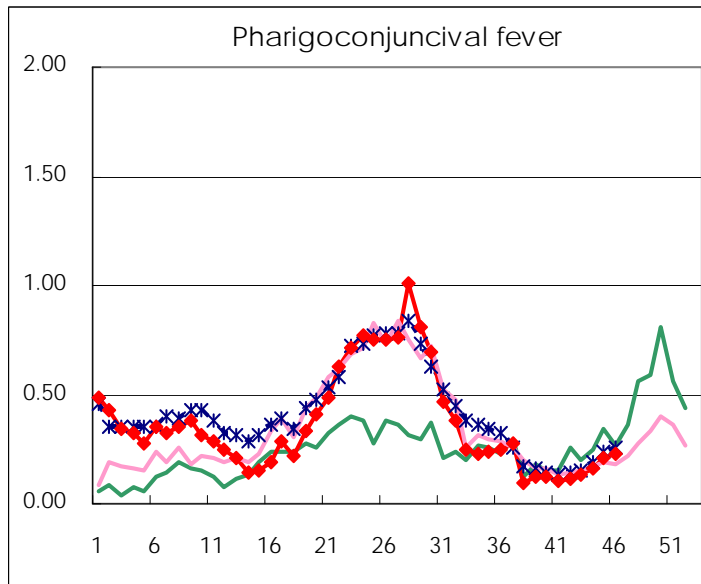
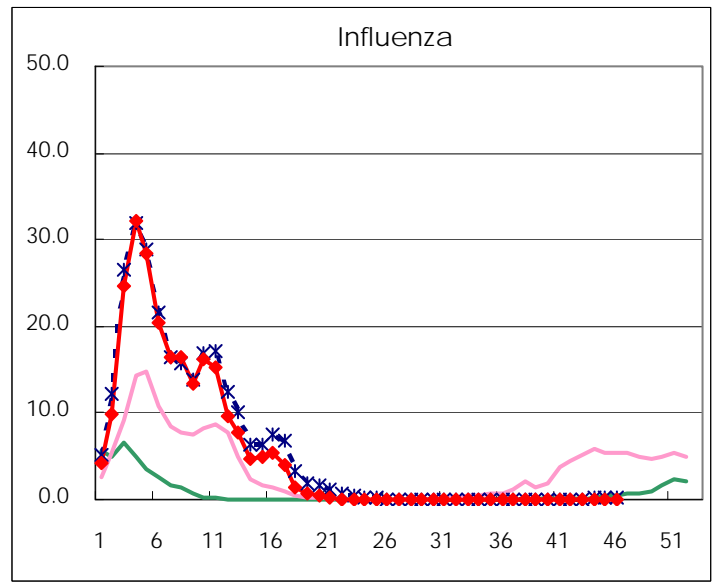
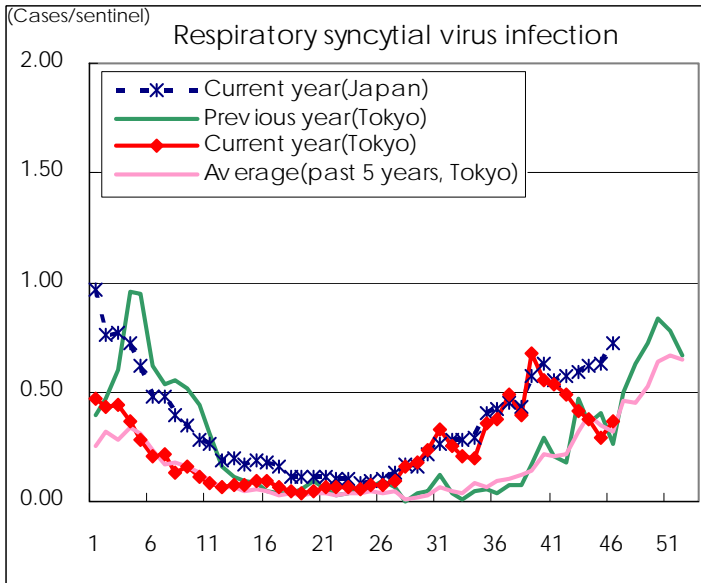
Category	Diseases	Tokyo				Japan		
		43rd	44th	45th	46th	Cum 2011	46th	Cum 2011
V	Amebiasis	2	6	4	5	156	13	733
	Viral hepatitis(excluding hepatitis A and E)	1	1	1	1	34	1	214
	Acute encephalitis(excluding JE and WNE)	3				17		221
	Cryptosporidiosis					2		8
	Creutzfeldt-Jakob disease					13	3	122
	Severe invasive streptococcal infections(TSLS)					28	3	178
	Acquired immunodeficiency syndrome (AIDS)	10	9	12	9	362	18	1,294
	Giardiasis		1			10	2	56
	Meningococcal meningitis					2		8
	Congenital rubella syndrome							1
	Syphilis	8	3	7	4	212	16	712
	Tetanus	1				7	1	101
	Vancomycin-resistant S. aureus infection							
	Vancomycin-resistant Enterococcus infection		1			2	2	57
	Rubella			1	1	29	2	345
	Measles	2		1		173	5	422

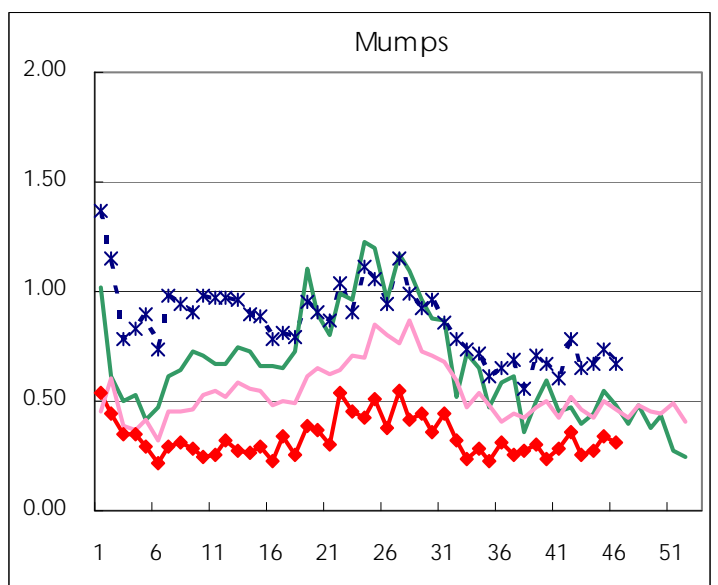
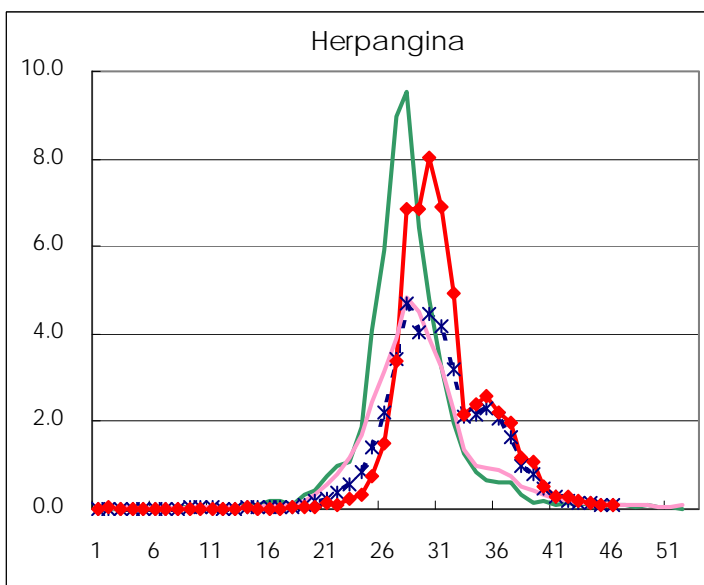
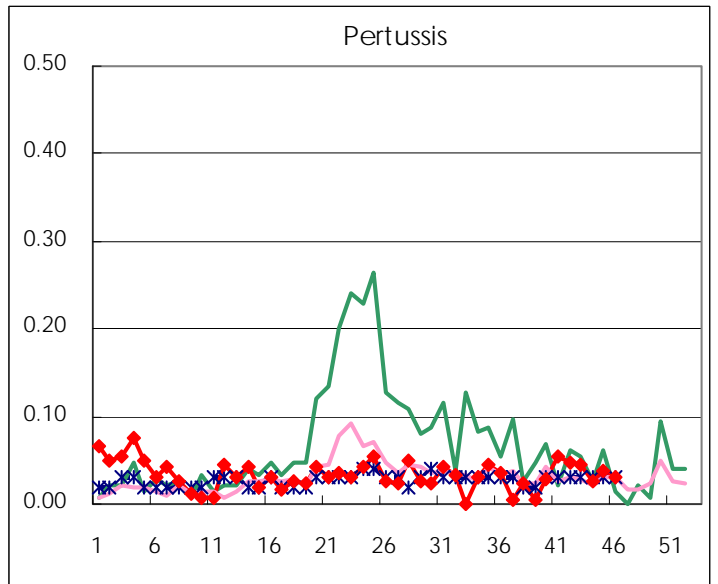
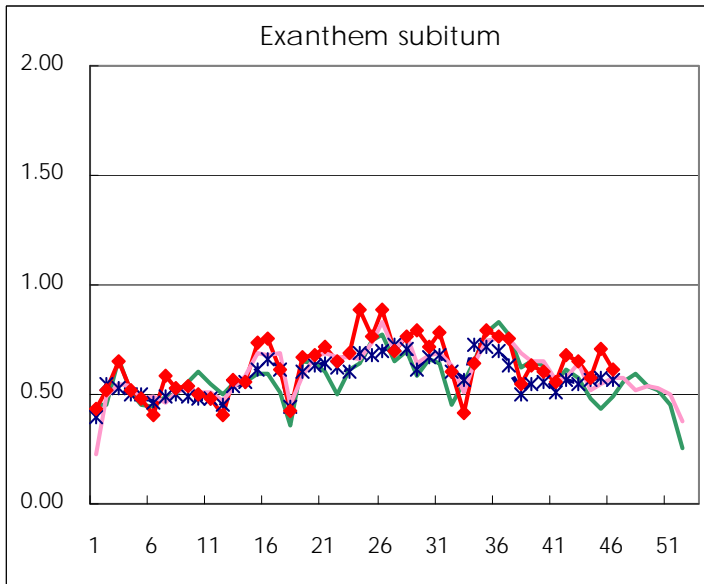
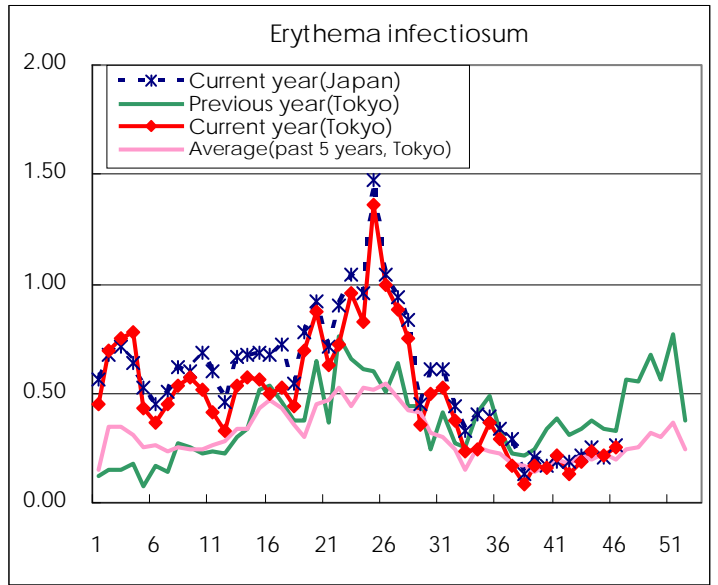
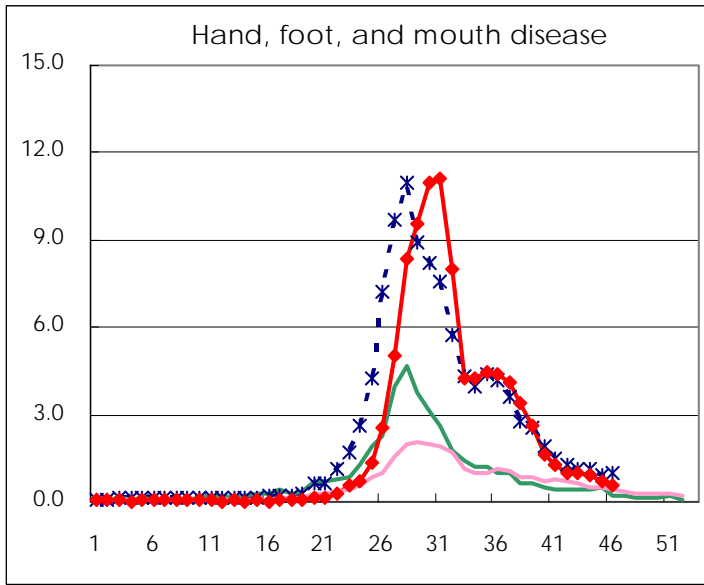
Number of patients with the diseases to be reported  
by the designated clinics and hospitals

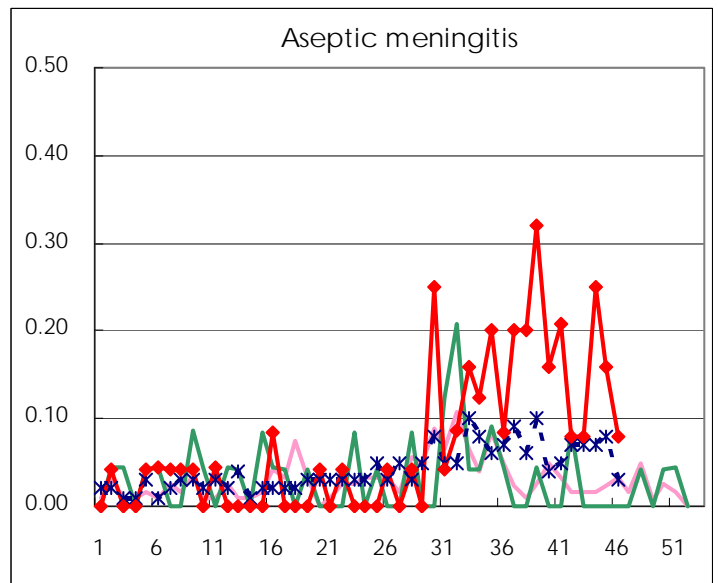
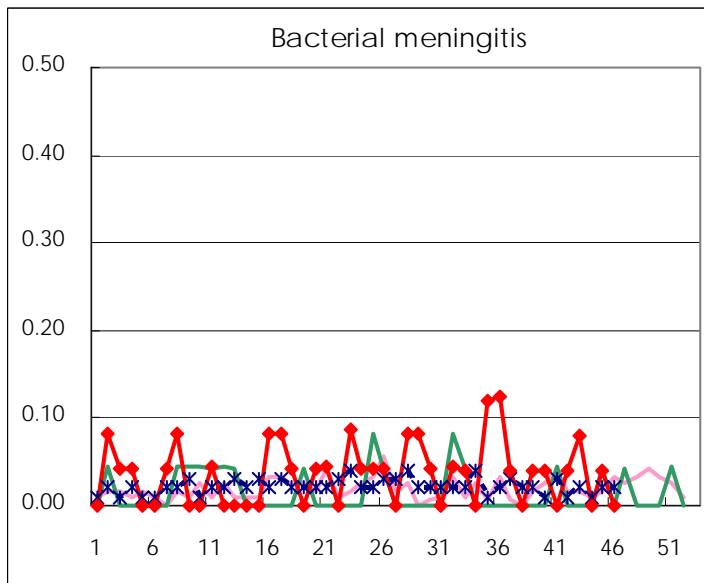
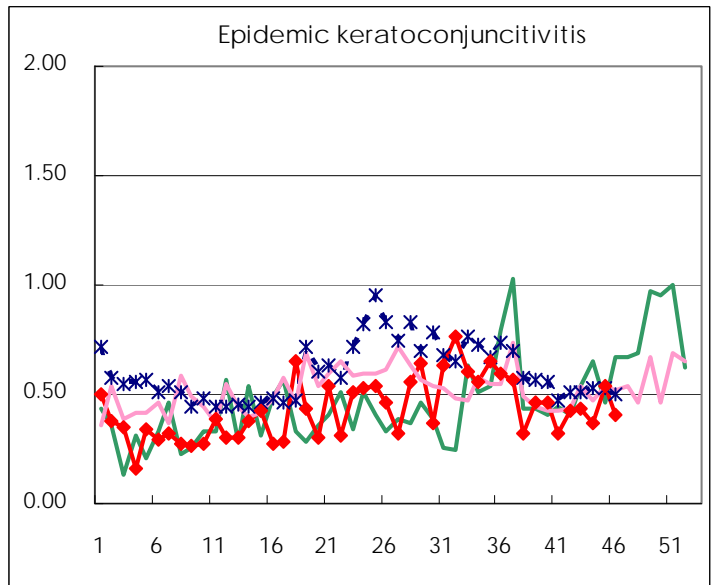
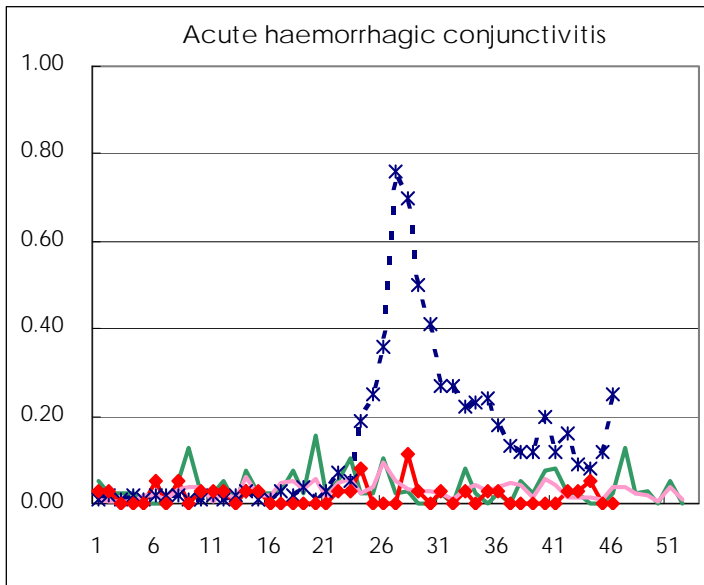
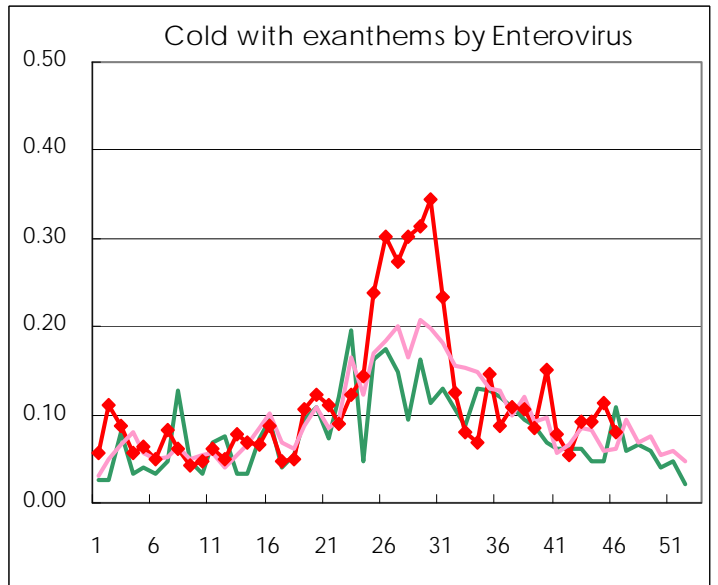
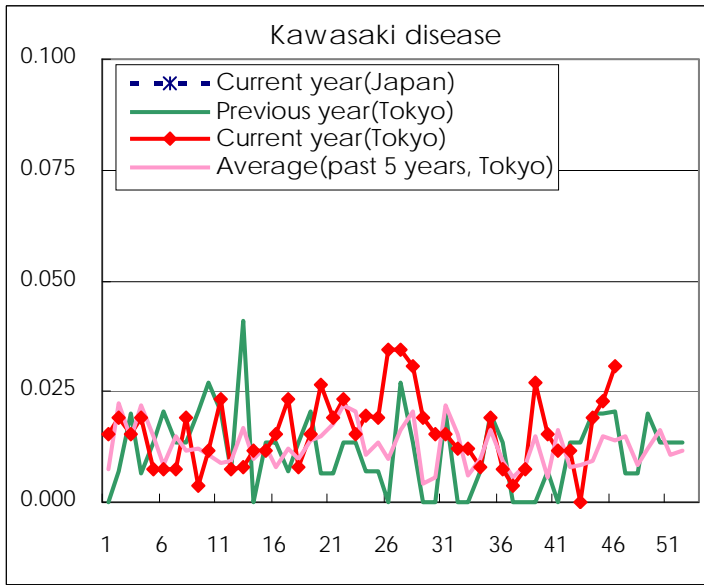
Diseases	2011				
	43rd	44th	45th	46th	/sentinel
Respiratory syncytial virus infection	108	98	76	94	0.36
Pharyngoconjunctival fever	34	42	56	60	0.23
Group A streptococcal pharyngitis	361	389	436	521	2.00
Infectious gastroenteritis	1003	1,037	1,375	1,677	6.45
Chickenpox	178	312	282	359	1.38
Hand, foot, and mouth disease	260	248	179	146	0.56
Erythema infectiosum	48	62	58	65	0.25
Exanthem subitum	170	151	185	160	0.62
Pertussis	12	7	10	8	0.03
Herpangina	45	32	21	25	0.10
Mumps	66	73	90	81	0.31
Kawasaki disease		5	6	8	0.03
Cold with exanthems by Enterovirus	24	24	30	21	0.08
Influenza	18	12	23	36	0.09
Acute hemorrhagic conjunctivitis	1	2			
Epidemic keratoconjunctivitis	16	14	20	15	0.41
Bacterial meningitis	2		1		
Aseptic meningitis	2	6	4	2	0.08
Mycoplasma pneumonia	42	39	39	41	1.64
Chlamydial pneumonia (excluding psittacosis)				1	0.04

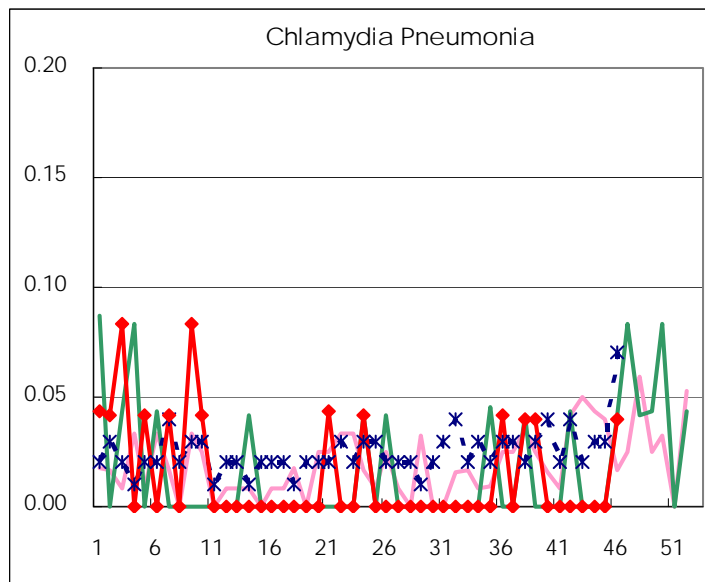
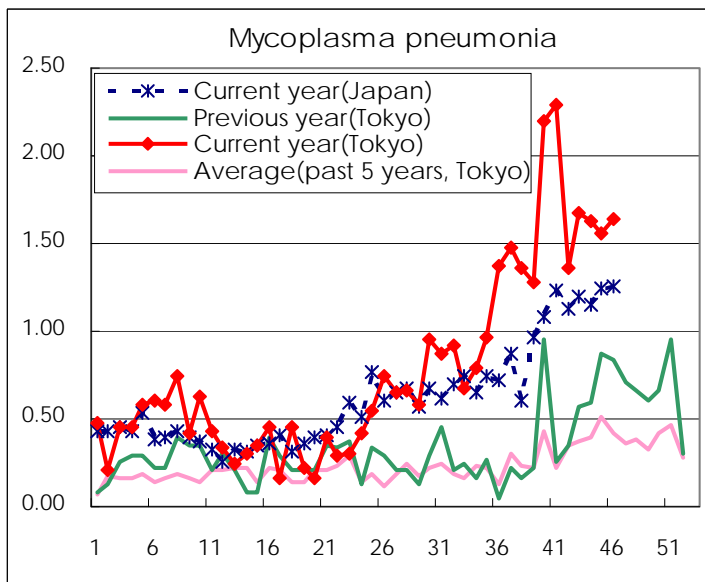
( Blank means 0. )

# Disease Trend Graph (weekly reported cases per sentinel in comparison)









Number of sentinel facilities for weekly reporting		
Types of sentinels	Number of sentinels	Sentinels having reported
Pediatric	264	260
Influenza	419	413
Ophthalmic	39	37
Specially-designated	25	25

Tokyo Metropolitan Government  
**Infectious Disease Surveillance Center**