

---

INFECTIOUS DISEASES WEEKLY REPORT

# TOKYO IDWR

Tokyo Metropolitan Infectious Disease Surveillance Center

## 8 December 2011 / Number 48

### Surveillance System in Tokyo, Japan

#### The infectious diseases which all physicians must report

All physicians must report to health centers the incidence of the diseases which are shown at page one. Health centers electronically report the individual cases to Tokyo Metropolitan Infectious Disease Surveillance Center.

#### The infectious diseases required to be reported by the sentinels

The numbers of patients who visit the sentinel clinics or hospitals during a week are reported to health centers in Tokyo. And they electronically report the numbers to Tokyo Metropolitan Infectious Disease Surveillance Center. We have about 500 sentinel clinics and hospitals in Tokyo.

1st Week is early January and 52nd Week is end of December.

Tokyo Metropolitan Institute of Public Health  
Epidemiological Information Office

TEL:81-3-3363-3213 FAX:81-3-5332-7365  
e-mail:[idsc@tokyo-eiken.go.jp](mailto:idsc@tokyo-eiken.go.jp)  
URL:[idsc.tokyo-eiken.go.jp/](http://idsc.tokyo-eiken.go.jp/)

---

## Number of patients with the diseases which all physicians must report

Category	Diseases	Tokyo				Japan		
		45th	46th	47th	48th	Cum 2011	48th	Cum 2011
I	Ebola hemorrhagic fever							
	Crimean-Congo hemorrhagic fever							
	Smallpox							
	South American hemorrhagic fever							
	Plague							
	Marburg disease							
	Lassa fever							
II	Acute poliomyelitis					1		1
	Tuberculosis	105	84	79	78	4,644	392	28,240
	Diphtheria							
	Severe Acute Respiratory Syndrome(SARS)							
	Avian influenza H5N1							
III	Cholera					3		10
	Shigellosis	3	2	1	5	82	6	284
	Enterohemorrhagic Escherichia coli infection	1	5	3	2	252	30	3,754
	Typhoid fever				1	6	1	22
	Paratyphoid fever					9	1	21
IV	Hepatitis E					9		52
	West Nile fever							
	Hepatitis A	1				25	2	171
	Echinococcosis					1		14
	Yellow fever							
	Psittacosis					3		13
	Omsk hemorrhagic fever							
	Relapsing fever							
	Kyasanur forest disease							
	Q fever							1
	Rabies							
	Coccidioidomycosis					2		2
	Monkeypox							
	Hemorrhagic fever with renal syndrome							
	Western equine encephalitis							
	Tick-borne encephalitis							
	Anthrax							
	Chikungunya fever							9
	Scrub typhus(Tsutsugamushi disease)	1	1	1		11	26	330
	Dengue fever			5	1	27	2	98
	Eastern equine encephalitis							
	Avian influenza (excluding H5N1)							
	Nipah virus infection							
	Japanese spotted fever					1	6	171
	Japanese encephalitis					1		8
	Hantavirus pulmonary syndrome							
	Herpes B virus infection							
	Glanders							
	Brucellosis						1	1
	Venezuelan equine encephalitis							
	Hendra virus infection							
Epidemic typhus								
Botulism							6	
Malaria						24	72	
Tularemia								
Lyme disease						3	7	
Lyssavirus infection(excluding rabies)								
Rift valley fever								
Melioidosis							3	
Legionellosis	2		2	2	67	17	753	
Leptospirosis	1				5		24	
Rocky mountain spotted fever								

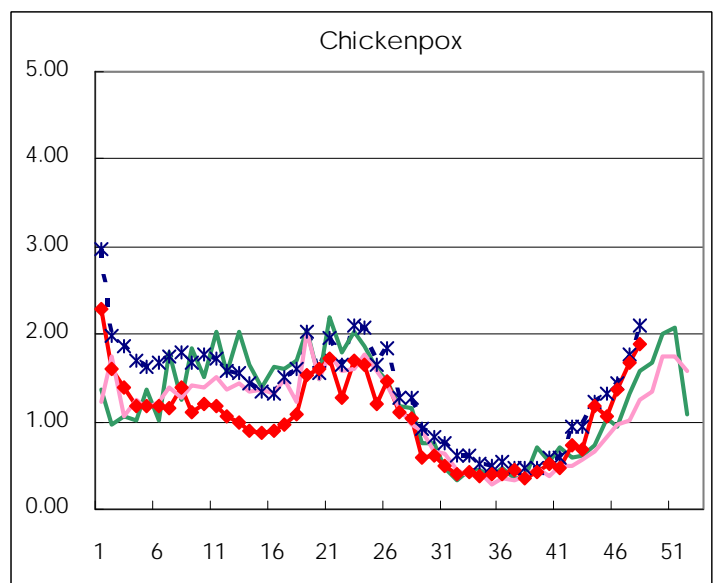
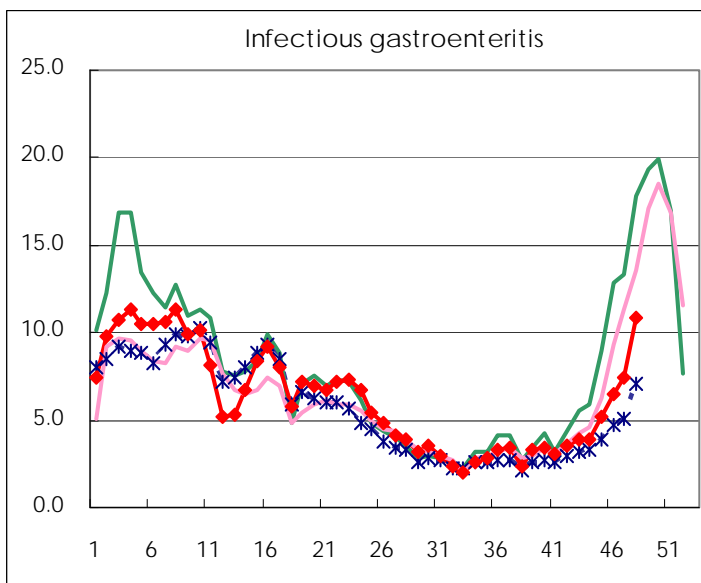
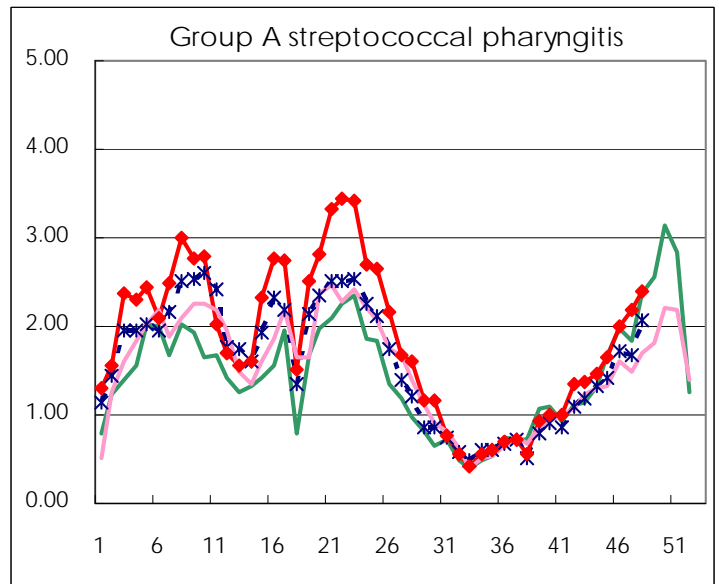
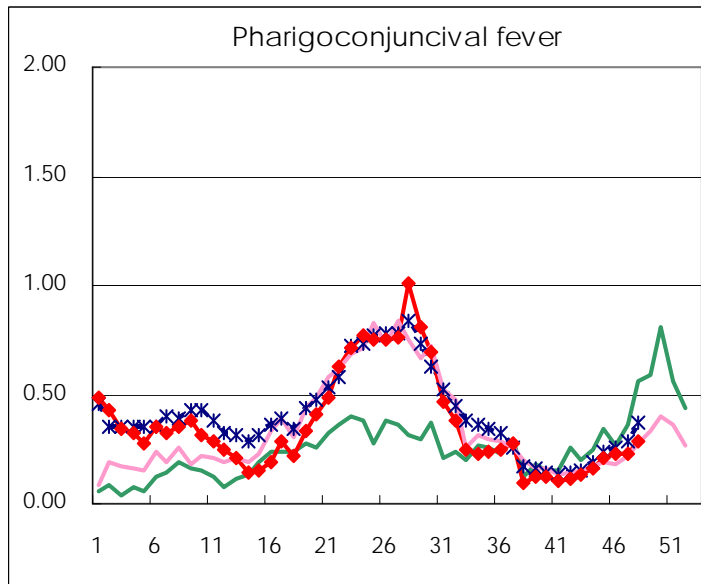
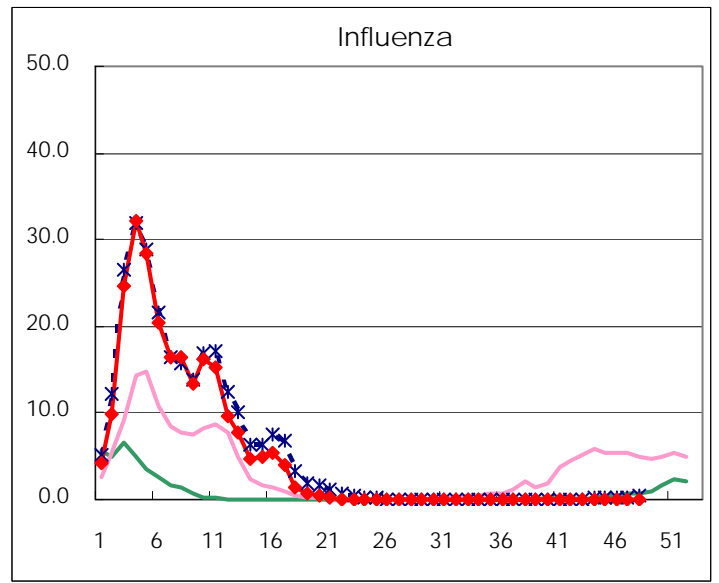
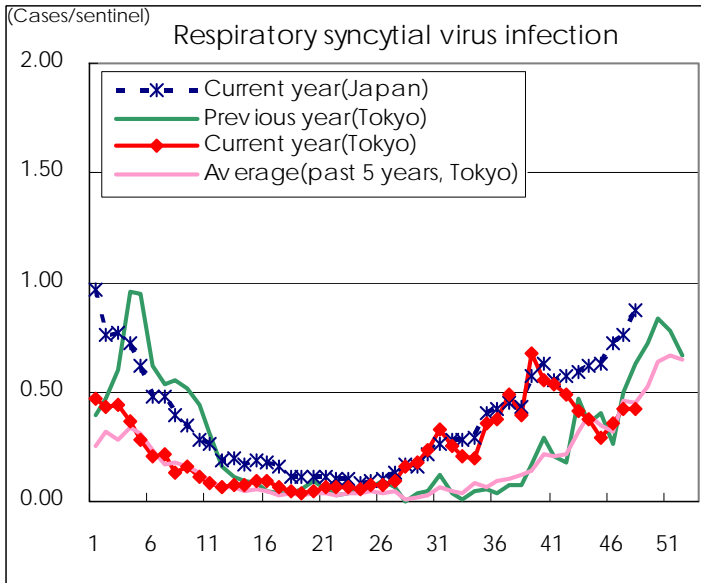
Category	Diseases	Tokyo				Japan		
		45th	46th	47th	48th	Cum 2011	48th	Cum 2011
V	Amebiasis	4	5	2	2	160	4	752
	Viral hepatitis(excluding hepatitis A and E)	1		2		35	3	228
	Acute encephalitis(excluding JE and WNE)					17	5	232
	Cryptosporidiosis					2		8
	Creutzfeldt-Jakob disease					13	3	125
	Severe invasive streptococcal infections(TSLS)					28		180
	Acquired immunodeficiency syndrome (AIDS)	11	9	6	6	373	8	1,343
	Giardiasis					10	1	57
	Meningococcal meningitis					2	2	12
	Congenital rubella syndrome							1
	Syphilis	7	4	5	4	221	12	747
	Tetanus				1	8	2	107
	Vancomycin-resistant S. aureus infection							
	Vancomycin-resistant Enterococcus infection				2	4	2	62
	Rubella	1	1	1		30	2	355
Measles	1		3		176	2	421	

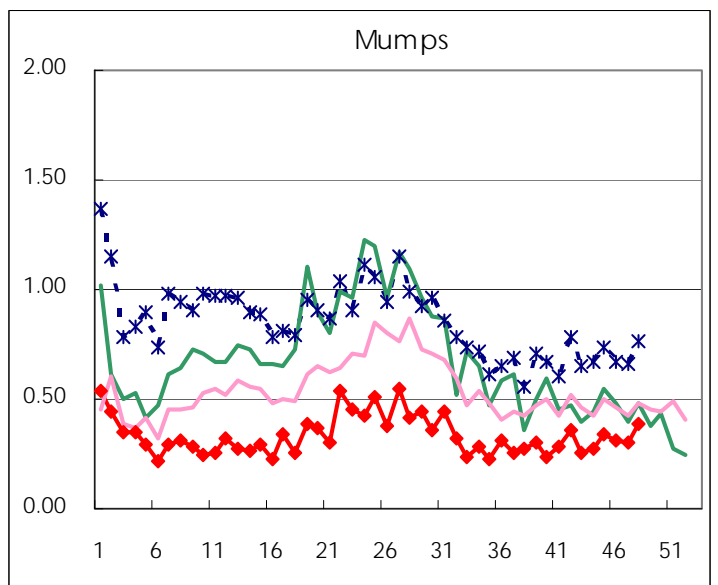
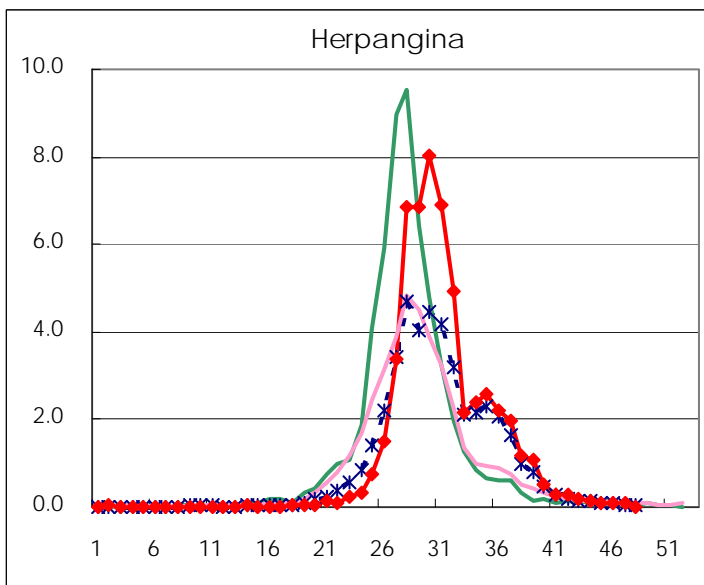
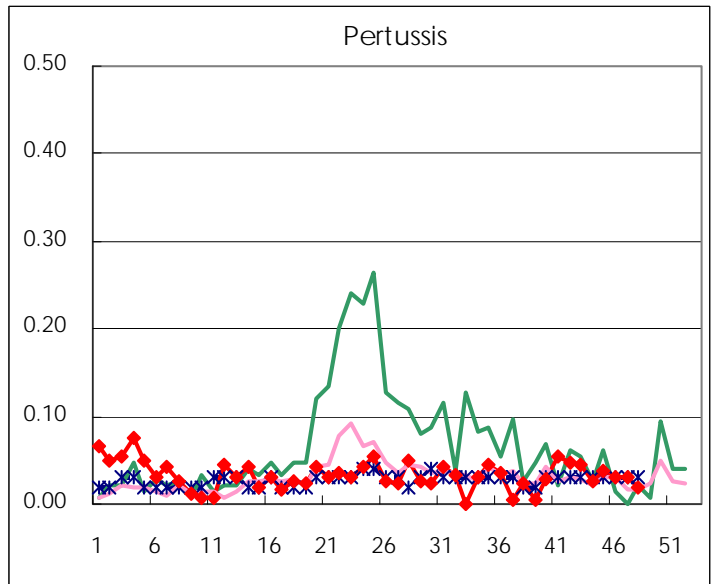
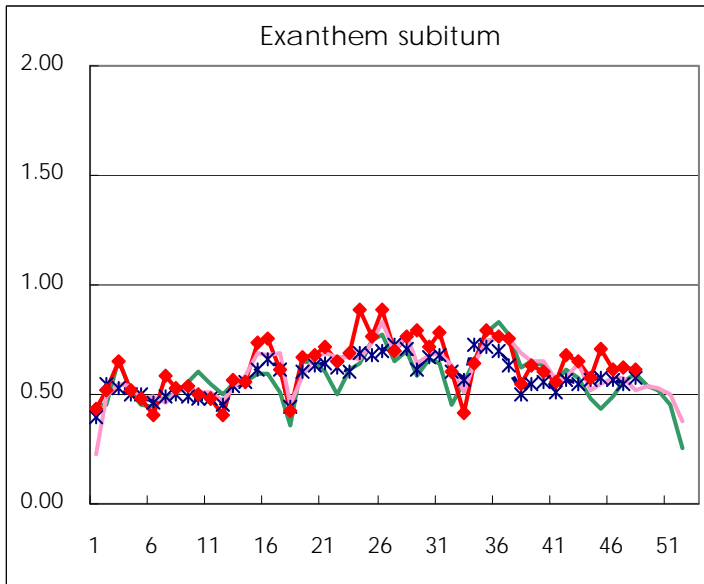
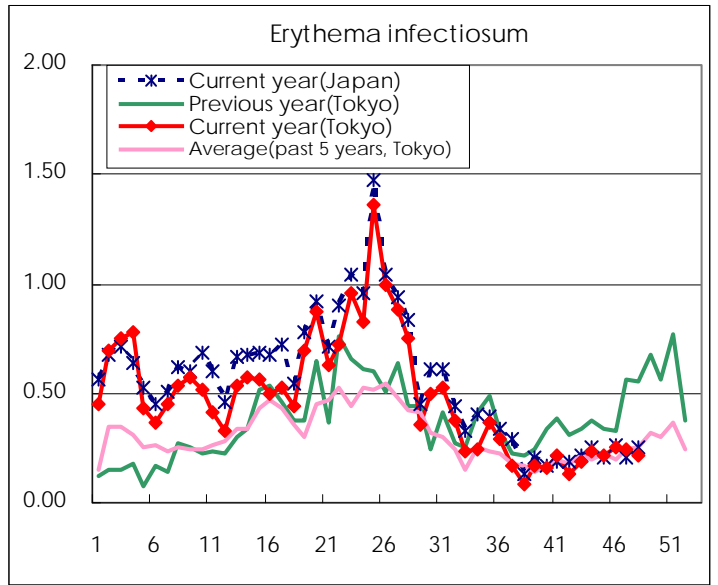
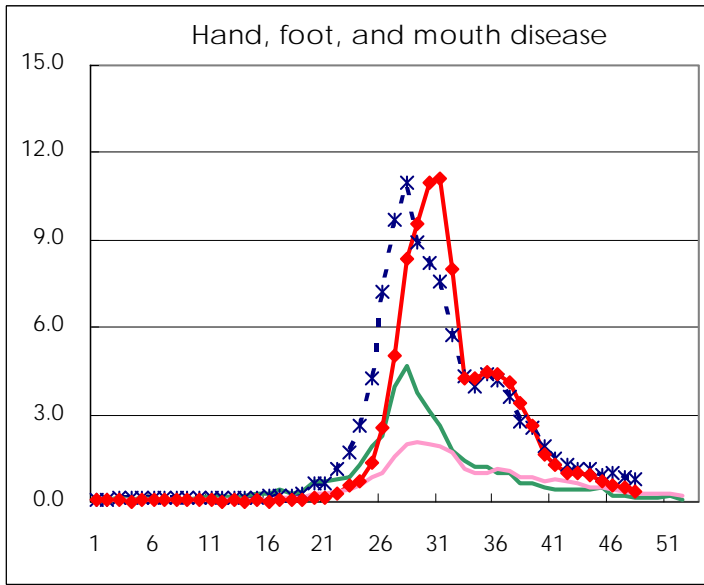
Number of patients with the diseases to be reported  
by the designated clinics and hospitals

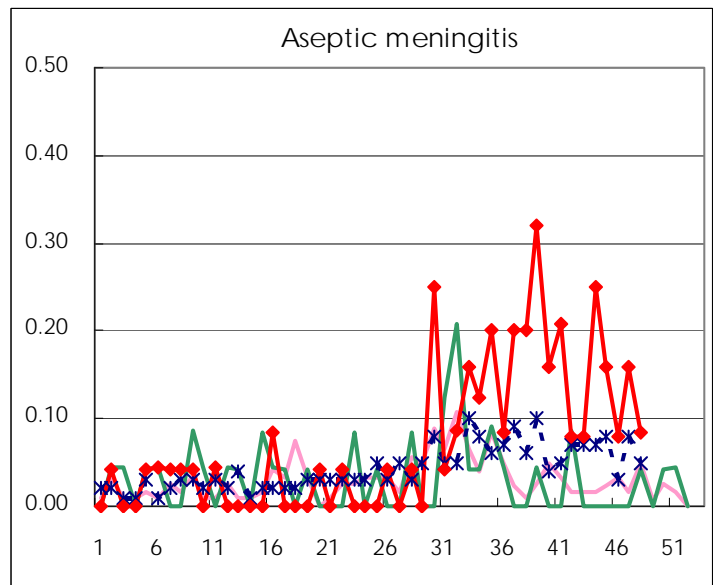
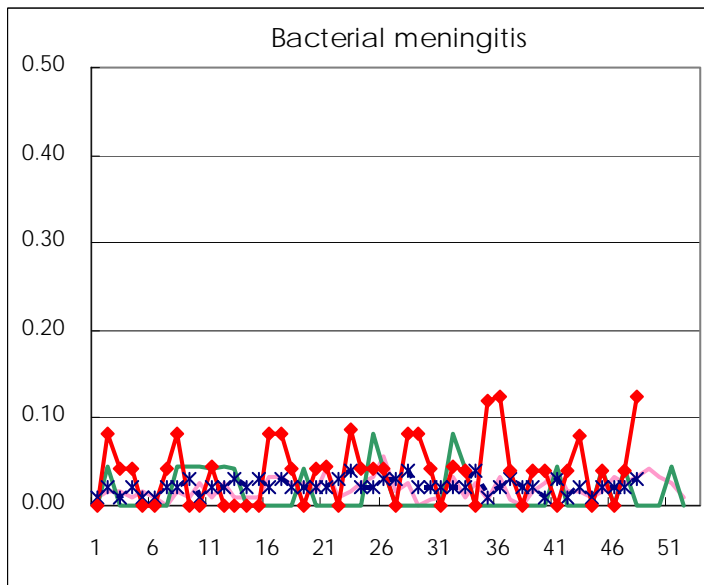
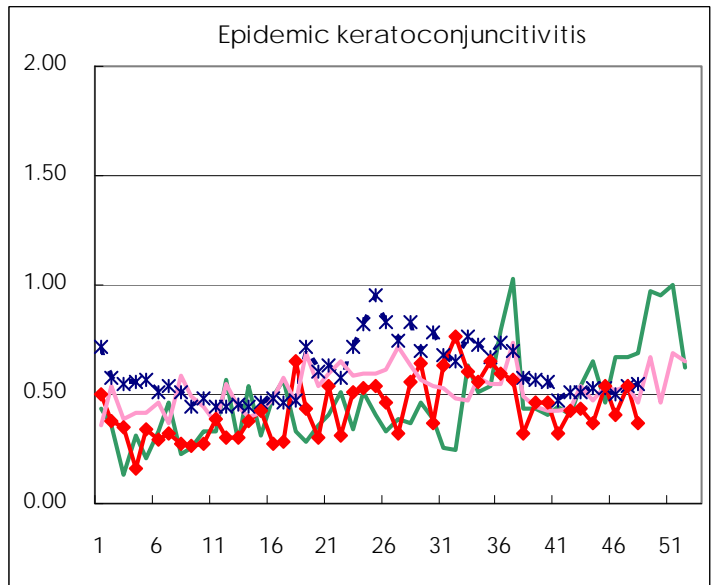
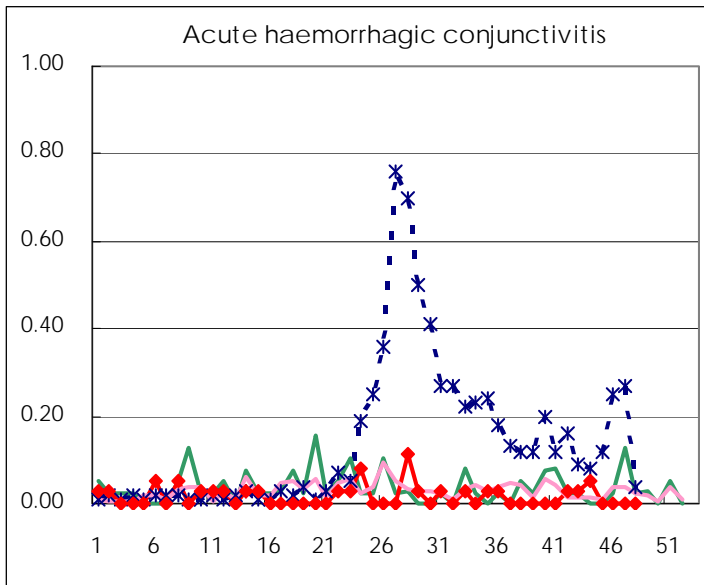
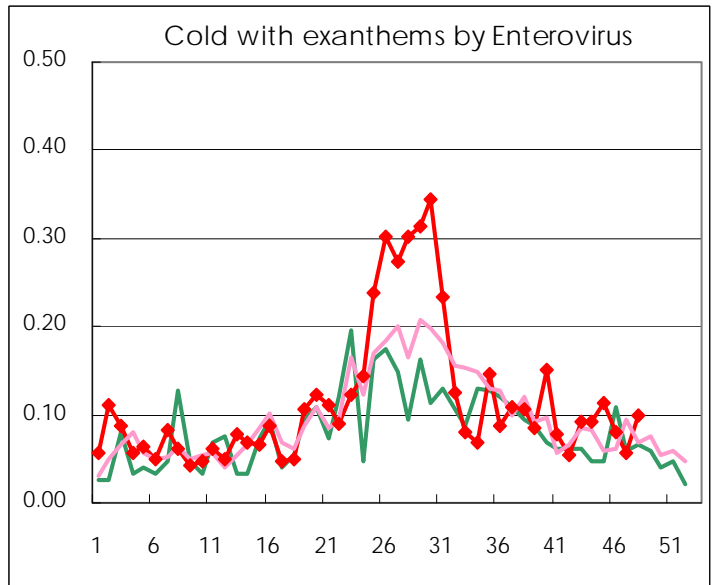
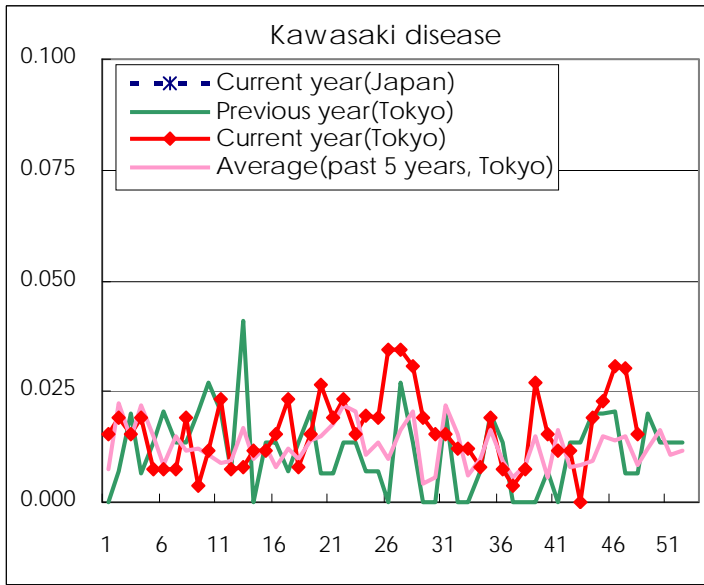
Diseases	2011				
	45th	46th	47th	48th	/sentinel
Respiratory syncytial virus infection	76	94	112	111	0.42
Pharyngoconjunctival fever	56	60	60	76	0.29
Group A streptococcal pharyngitis	436	521	574	632	2.39
Infectious gastroenteritis	1375	1,681	1,944	2,864	10.85
Chickenpox	282	359	438	500	1.89
Hand, foot, and mouth disease	179	146	130	98	0.37
Erythema infectiosum	58	65	63	57	0.22
Exanthem subitum	185	160	164	162	0.61
Pertussis	10	8	8	5	0.02
Herpangina	21	25	19	5	0.02
Mumps	90	81	80	101	0.38
Kawasaki disease	6	8	8	4	0.02
Cold with exanthems by Enterovirus	30	21	15	26	0.10
Influenza	23	36	29	35	0.08
Acute hemorrhagic conjunctivitis					
Epidemic keratoconjunctivitis	20	15	20	14	0.37
Bacterial meningitis	1		1	3	0.13
Aseptic meningitis	4	2	4	2	0.08
Mycoplasma pneumonia	39	42	66	38	1.58
Chlamydial pneumonia (excluding psittacosis)		1	1	1	0.04

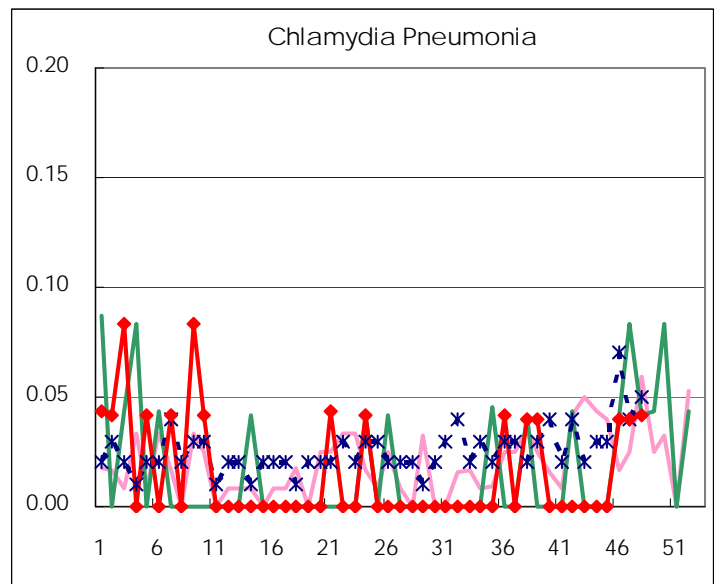
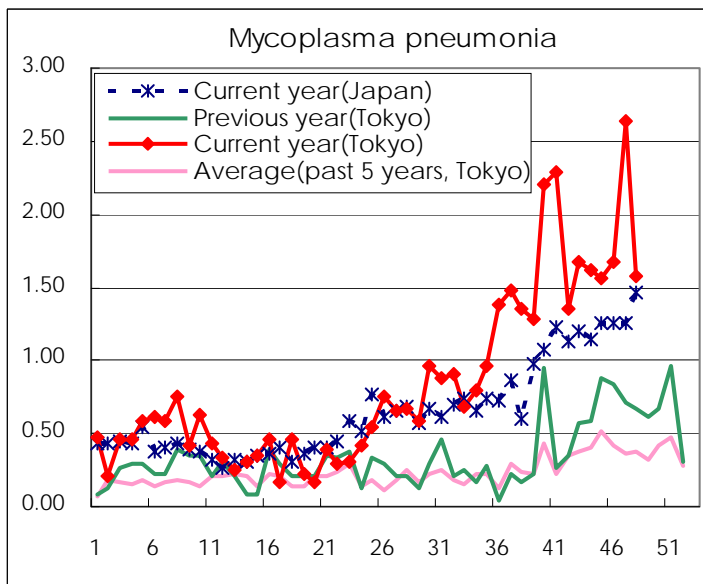
( Blank means 0. )

# Disease Trend Graph (weekly reported cases per sentinel in comparison)









Number of sentinel facilities for weekly reporting		
Types of sentinels	Number of sentinels	Sentinels having reported
Pediatric	264	264
Influenza	419	418
Ophthalmic	39	38
Specially-designated	25	24

Tokyo Metropolitan Government  
**Infectious Disease Surveillance Center**