
INFECTIOUS DISEASES WEEKLY REPORT

TOKYO IDWR

Tokyo Metropolitan Infectious Disease Surveillance Center

15 December 2011 / Number 49

Surveillance System in Tokyo, Japan

The infectious diseases which all physicians must report

All physicians must report to health centers the incidence of the diseases which are shown at page one. Health centers electronically report the individual cases to Tokyo Metropolitan Infectious Disease Surveillance Center.

The infectious diseases required to be reported by the sentinels

The numbers of patients who visit the sentinel clinics or hospitals during a week are reported to health centers in Tokyo. And they electronically report the numbers to Tokyo Metropolitan Infectious Disease Surveillance Center. We have about 500 sentinel clinics and hospitals in Tokyo.

1st Week is early January and 52nd Week is end of December.

Tokyo Metropolitan Institute of Public Health
Epidemiological Information Office

TEL:81-3-3363-3213 FAX:81-3-5332-7365

e-mail:idsc@tokyo-eiken.go.jp

URL:idsc.tokyo-eiken.go.jp/

Number of patients with the diseases which all physicians must report

Category	Diseases	Tokyo				Japan		
		46th	47th	48th	49th	Cum 2011	49th	Cum 2011
I	Ebola hemorrhagic fever							
	Crimean-Congo hemorrhagic fever							
	Smallpox							
	South American hemorrhagic fever							
	Plague							
	Marburg disease							
	Lassa fever							
II	Acute poliomyelitis					1		1
	Tuberculosis	91	82	110	84	4,775	397	28,903
	Diphtheria							
	Severe Acute Respiratory Syndrome(SARS)							
	Avian influenza H5N1							
III	Cholera					3		10
	Shigellosis	2	1	4		81	1	284
	Enterohemorrhagic Escherichia coli infection	5	3	2	2	254	23	3,781
	Typhoid fever			1		6		22
	Paratyphoid fever					9		21
IV	Hepatitis E					9		54
	West Nile fever							
	Hepatitis A				1	26	1	174
	Echinococcosis					1		13
	Yellow fever							
	Psittacosis					3		13
	Omsk hemorrhagic fever							
	Relapsing fever							
	Kyasanur forest disease							
	Q fever							1
	Rabies							
	Coccidioidomycosis					2		2
	Monkeypox							
	Hemorrhagic fever with renal syndrome							
	Western equine encephalitis							
	Tick-borne encephalitis							
	Anthrax							
	Chikungunya fever							9
	Scrub typhus(Tsutsugamushi disease)	1	1			11	24	371
	Dengue fever		5	1		27	2	100
	Eastern equine encephalitis							
	Avian influenza (excluding H5N1)							
	Nipah virus infection							
	Japanese spotted fever					1	1	173
	Japanese encephalitis					1		8
	Hantavirus pulmonary syndrome							
	Herpes B virus infection							
	Glanders							
	Brucellosis							1
	Venezuelan equine encephalitis							
	Hendra virus infection							
Epidemic typhus								
Botulism							6	
Malaria				1	25	1	73	
Tularemia								
Lyme disease					3		7	
Lyssavirus infection(excluding rabies)								
Rift valley fever								
Melioidosis							3	
Legionellosis		2	2	1	68	9	770	
Leptospirosis					5		25	
Rocky mountain spotted fever								

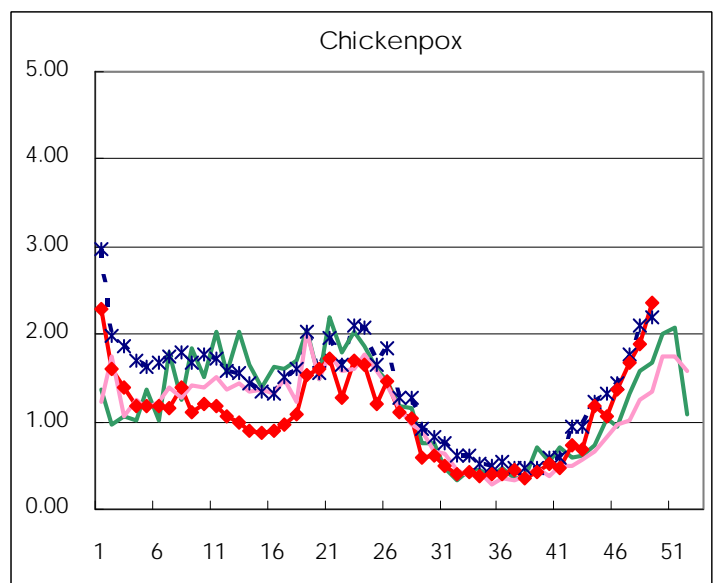
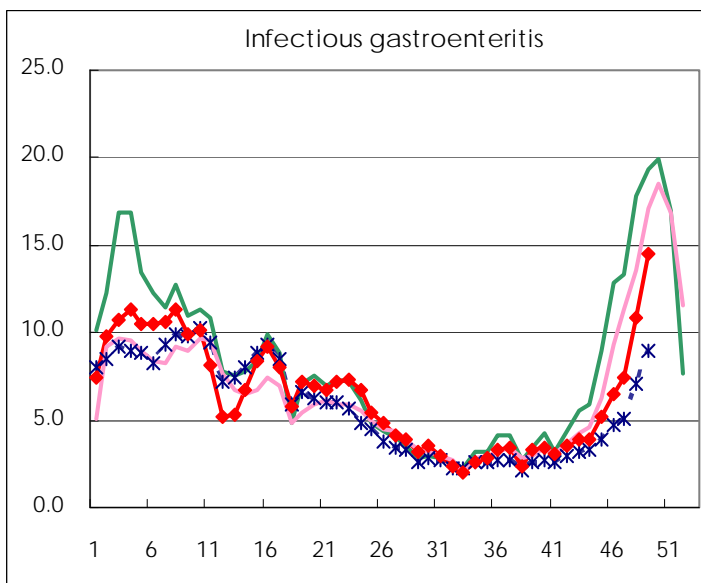
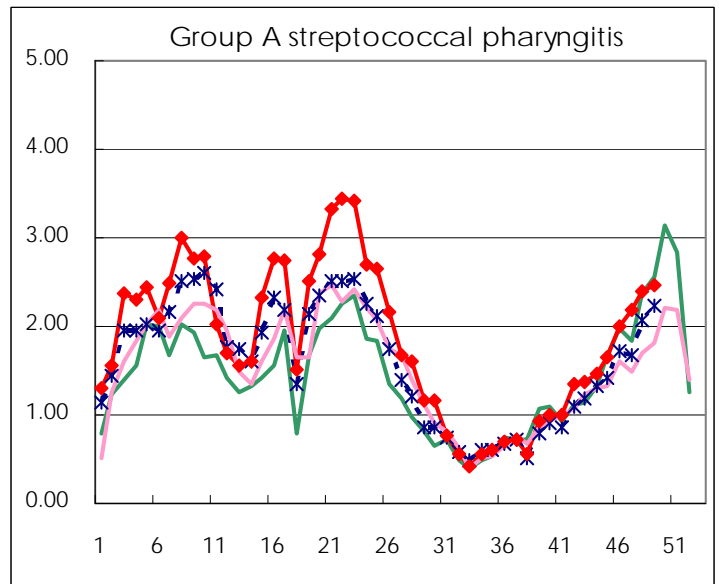
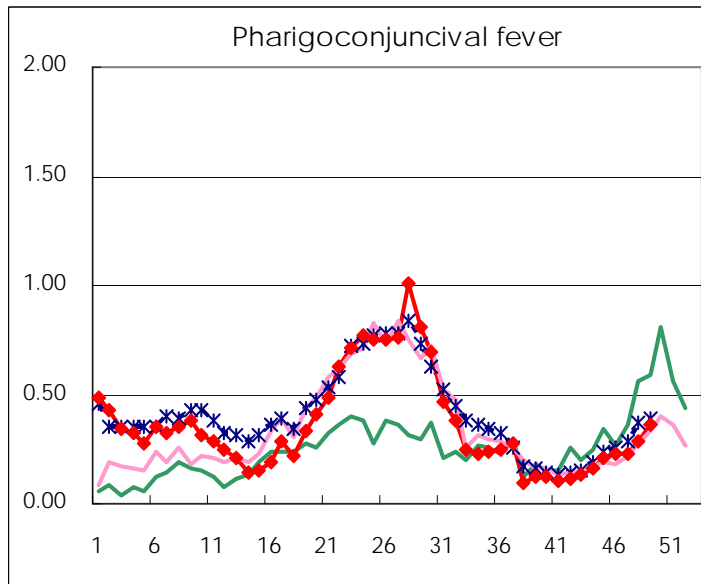
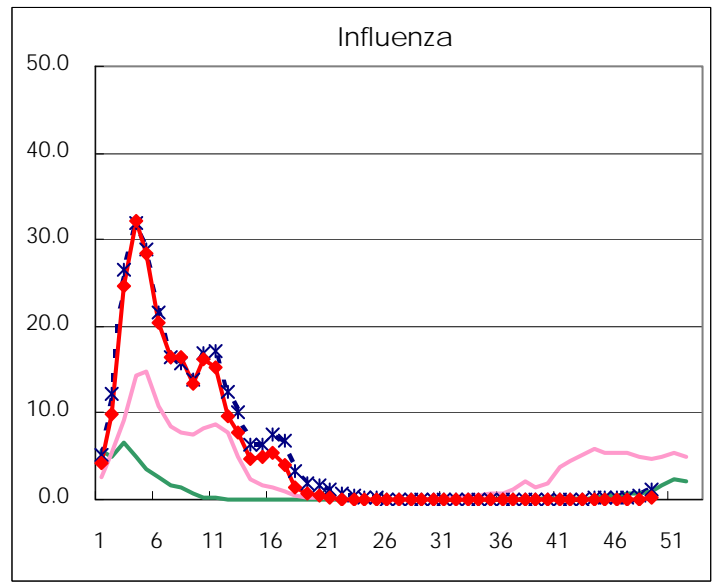
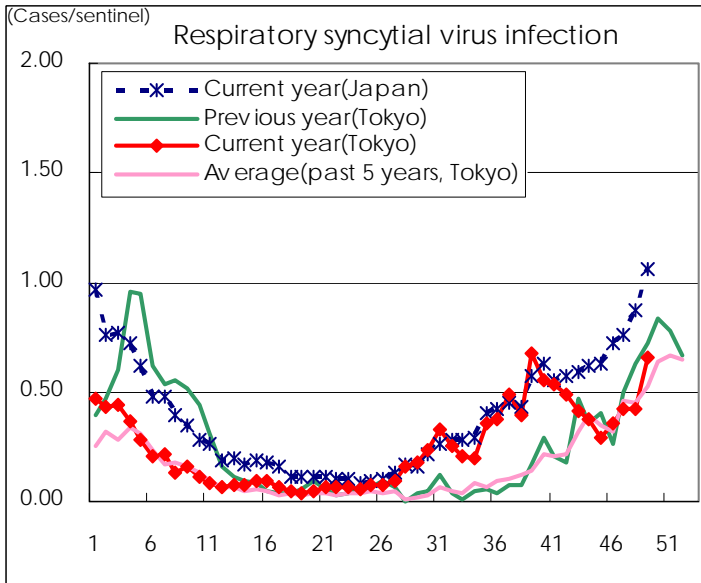
Category	Diseases	Tokyo				Japan		
		46th	47th	48th	49th	Cum 2011	49th	Cum 2011
V	Amebiasis	5	2	2	3	163	9	768
	Viral hepatitis(excluding hepatitis A and E)		2		1	36	1	231
	Acute encephalitis(excluding JE and WNE)				2	19	4	239
	Cryptosporidiosis					2		8
	Creutzfeldt-Jakob disease					13		125
	Severe invasive streptococcal infections(TSLS)					28	2	185
	Acquired immunodeficiency syndrome (AIDS)	9	6	6	8	381	16	1,382
	Giardiasis				1	11	2	61
	Meningococcal meningitis					2		12
	Congenital rubella syndrome							1
	Syphilis	4	5	4	8	229	8	762
	Tetanus			1		8		109
	Vancomycin-resistant S. aureus infection							
	Vancomycin-resistant Enterococcus infection			2	1	5	2	64
	Rubella	1	1			30	6	362
	Measles		3			176	3	429

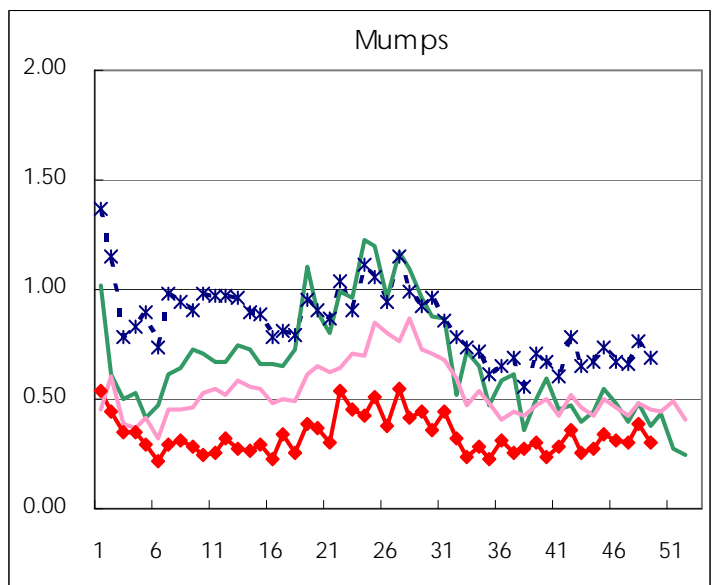
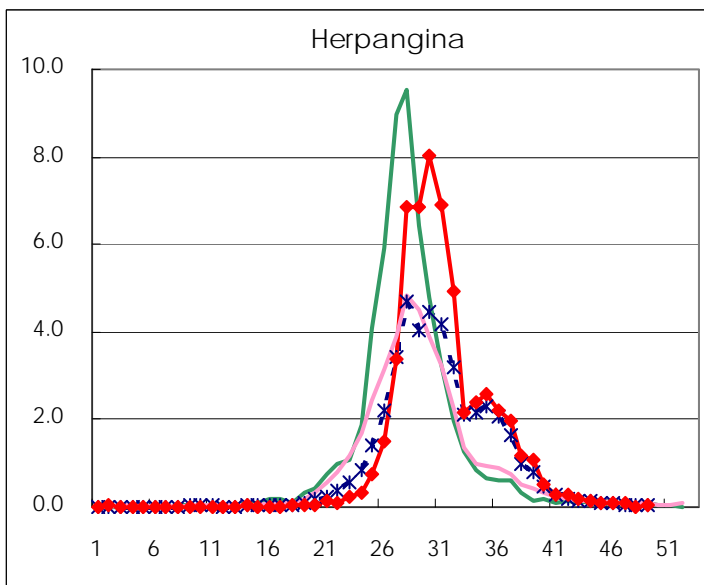
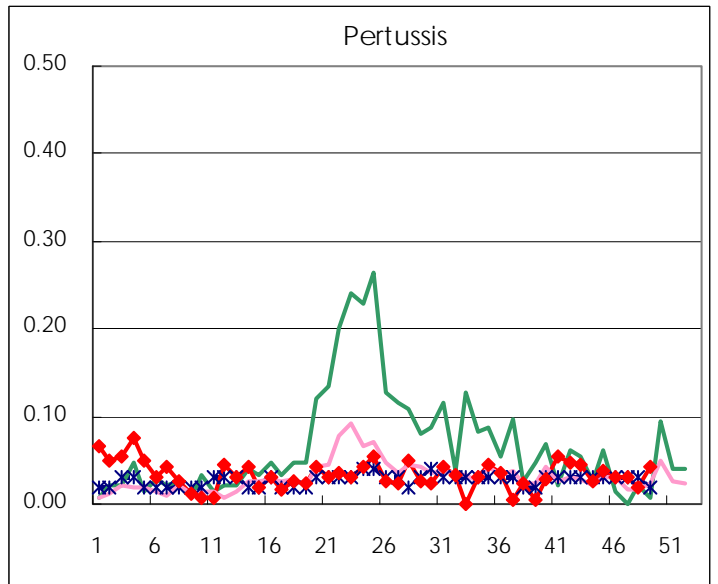
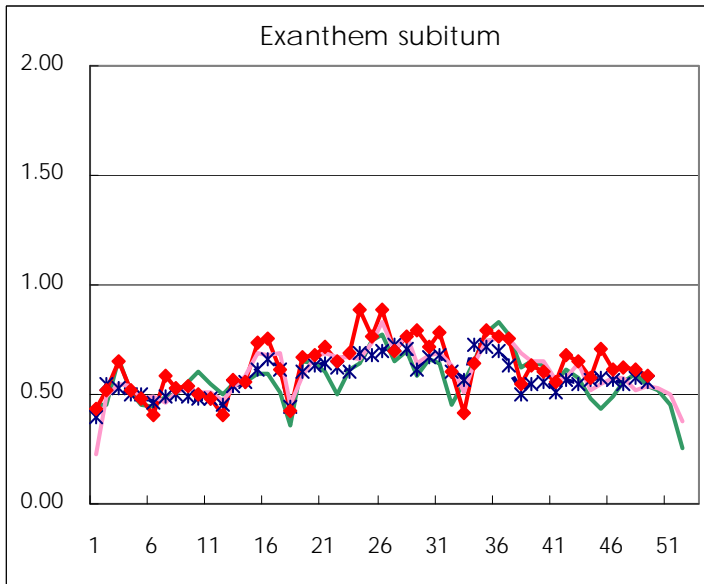
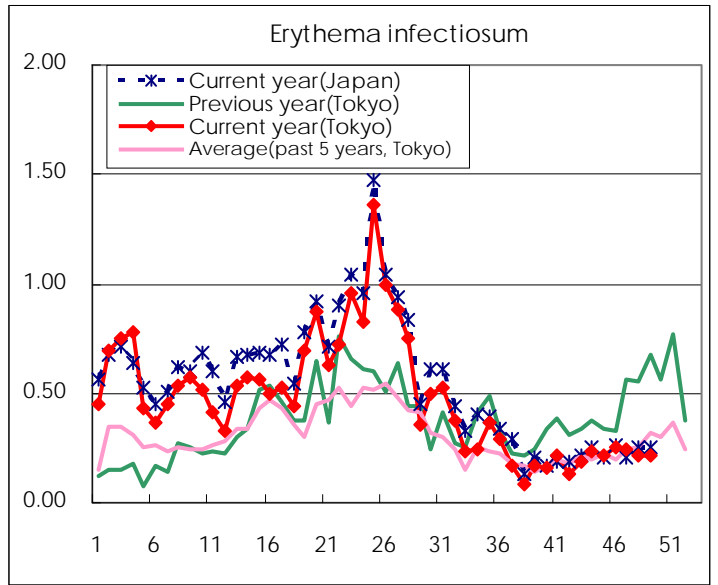
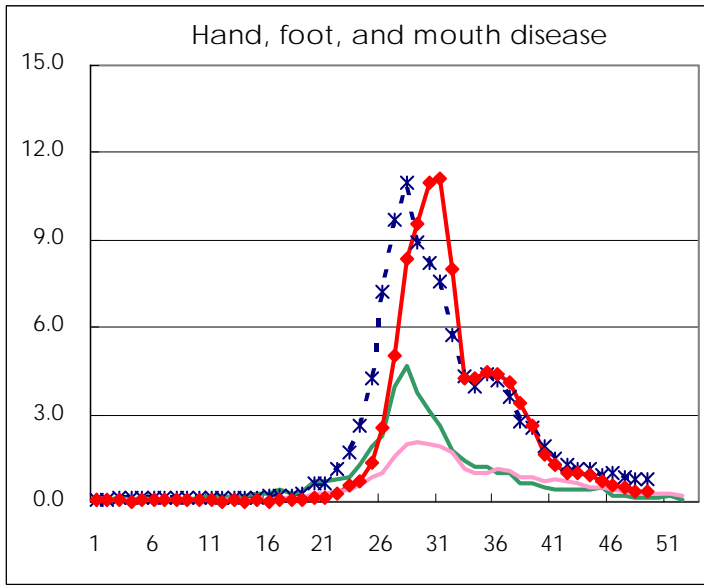
Number of patients with the diseases to be reported
by the designated clinics and hospitals

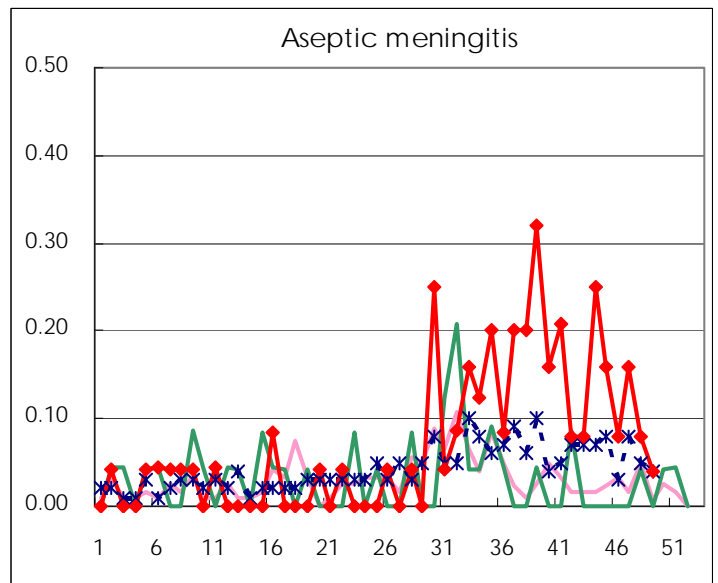
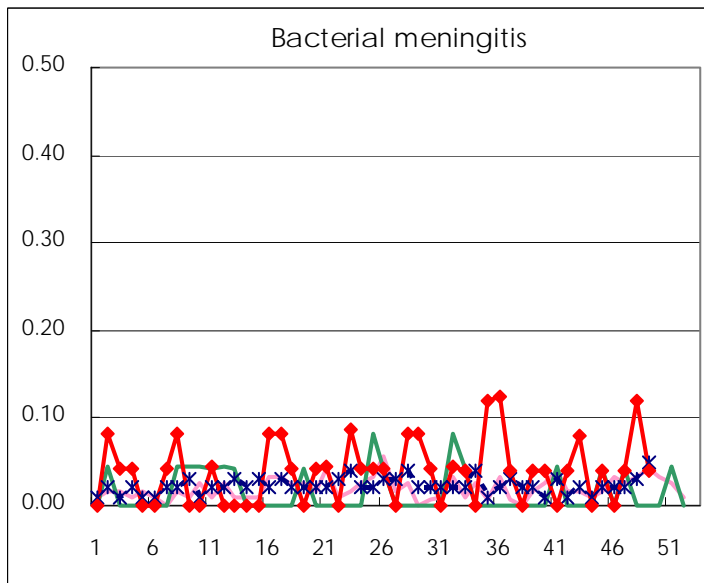
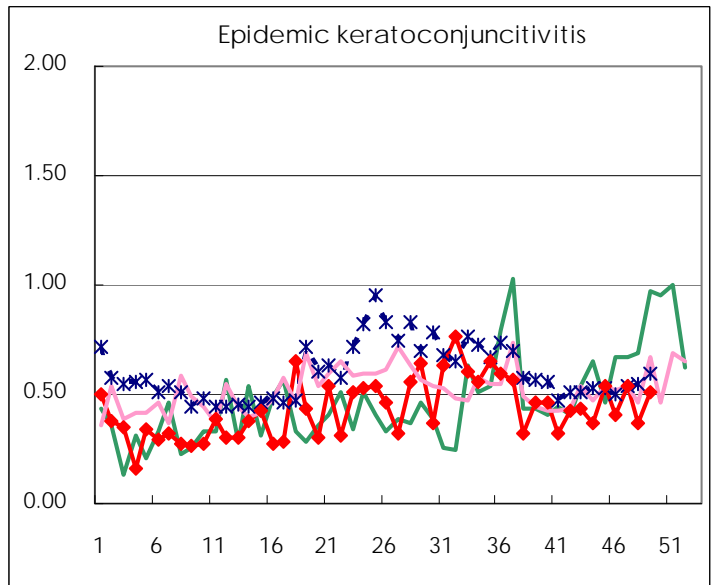
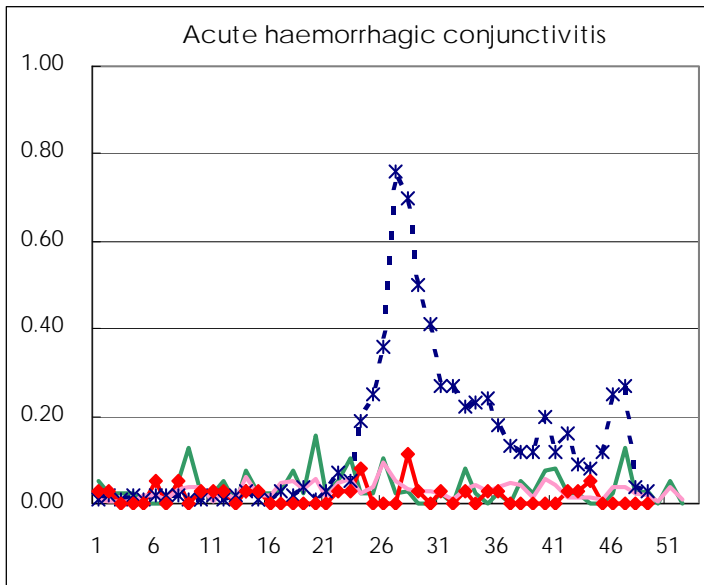
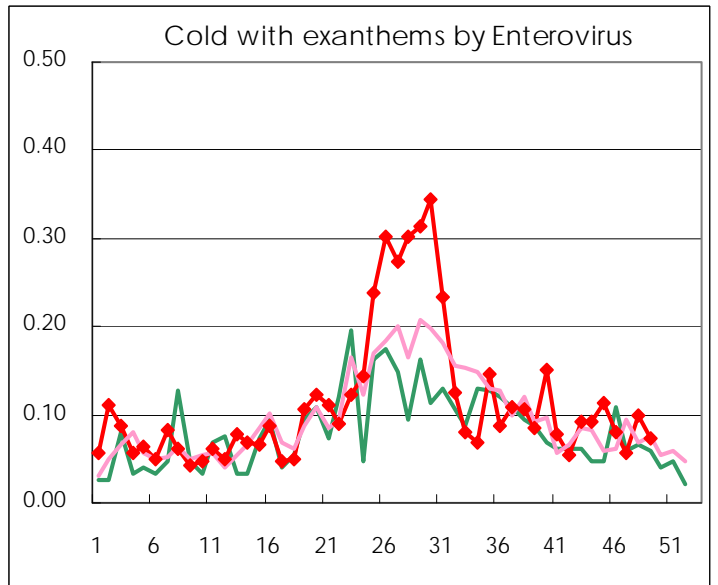
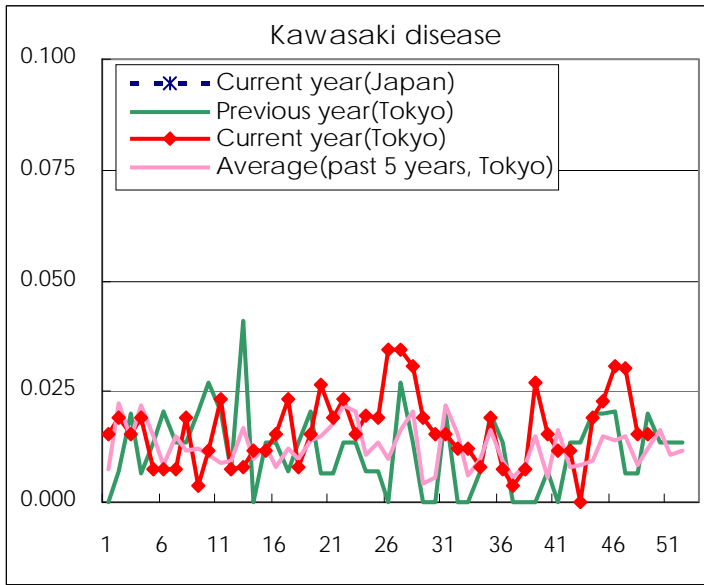
Diseases	2011				
	46th	47th	48th	49th	/sentinel
Respiratory syncytial virus infection	94	112	111	172	0.66
Pharyngoconjunctival fever	60	60	76	94	0.36
Group A streptococcal pharyngitis	521	574	632	643	2.45
Infectious gastroenteritis	1681	1,944	2,864	3,811	14.55
Chickenpox	359	438	500	618	2.36
Hand, foot, and mouth disease	146	130	98	90	0.34
Erythema infectiosum	65	63	57	56	0.21
Exanthem subitum	160	164	162	153	0.58
Pertussis	8	8	5	11	0.04
Herpangina	25	19	5	12	0.05
Mumps	81	80	101	80	0.31
Kawasaki disease	8	8	4	4	0.02
Cold with exanthems by Enterovirus	21	15	26	19	0.07
Influenza	36	29	35	102	0.25
Acute hemorrhagic conjunctivitis					
Epidemic keratoconjunctivitis	15	20	14	19	0.51
Bacterial meningitis		1	3	1	0.04
Aseptic meningitis	2	4	2	1	0.04
Mycoplasma pneumonia	42	66	40	50	2.00
Chlamydial pneumonia (excluding psittacosis)	1	1	1	1	0.04

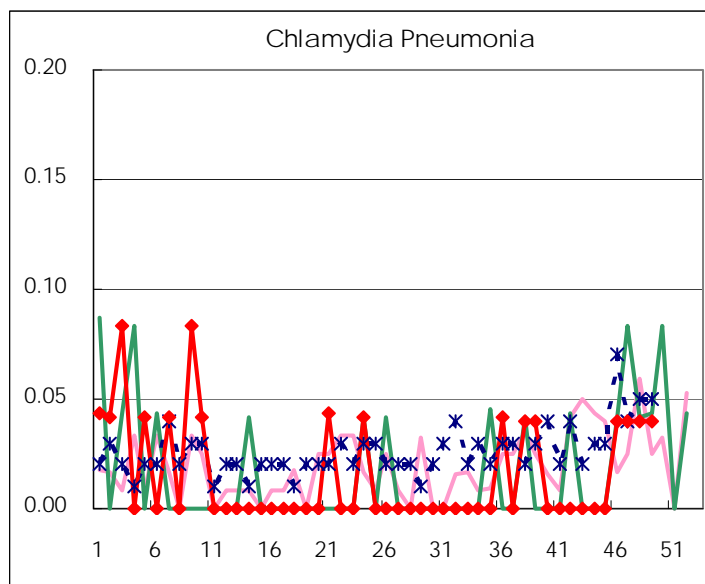
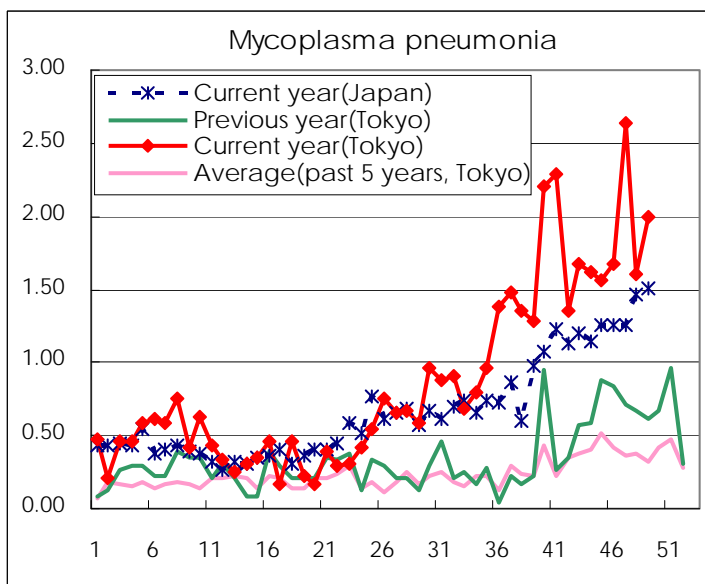
(Blank means 0.)

Disease Trend Graph (weekly reported cases per sentinel in comparison)









Number of sentinel facilities for weekly reporting		
Types of sentinels	Number of sentinels	Sentinels having reported
Pediatric	264	262
Influenza	419	414
Ophthalmic	39	37
Specially-designated	25	25

Tokyo Metropolitan Government
Infectious Disease Surveillance Center