
INFECTIOUS DISEASES WEEKLY REPORT

TOKYO IDWR

Tokyo Metropolitan Infectious Disease Surveillance Center

22 December 2011 / Number 50

Surveillance System in Tokyo, Japan

The infectious diseases which all physicians must report

All physicians must report to health centers the incidence of the diseases which are shown at page one. Health centers electronically report the individual cases to Tokyo Metropolitan Infectious Disease Surveillance Center.

The infectious diseases required to be reported by the sentinels

The numbers of patients who visit the sentinel clinics or hospitals during a week are reported to health centers in Tokyo. And they electronically report the numbers to Tokyo Metropolitan Infectious Disease Surveillance Center. We have about 500 sentinel clinics and hospitals in Tokyo.

1st Week is early January and 52nd Week is end of December.

Tokyo Metropolitan Institute of Public Health
Epidemiological Information Office

TEL:81-3-3363-3213 FAX:81-3-5332-7365

e-mail: idsc@tokyo-eiken.go.jp

URL: idsc.tokyo-eiken.go.jp/

Number of patients with the diseases which all physicians must report

Category	Diseases	Tokyo				Japan		
		47th	48th	49th	50th	Cum 2011	50th	Cum 2011
I	Ebola hemorrhagic fever							
	Crimean-Congo hemorrhagic fever							
	Smallpox							
	South American hemorrhagic fever							
	Plague							
	Marburg disease							
	Lassa fever							
II	Acute poliomyelitis					1		1
	Tuberculosis	86	118	96	60	4,863	337	29,591
	Diphtheria							
	Severe Acute Respiratory Syndrome(SARS)							
	Avian influenza H5N1							
III	Cholera					3		10
	Shigellosis	1	4		1	82	3	288
	Enterohemorrhagic Escherichia coli infection	3	2	2	2	255	42	3,823
	Typhoid fever		1			6		22
	Paratyphoid fever					9		21
IV	Hepatitis E					9		54
	West Nile fever							
	Hepatitis A			1		26		174
	Echinococcosis					1		14
	Yellow fever							
	Psittacosis					3		13
	Omsk hemorrhagic fever							
	Relapsing fever							
	Kyasanur forest disease							
	Q fever							1
	Rabies							
	Coccidioidomycosis					2		2
	Monkeypox							
	Hemorrhagic fever with renal syndrome							
	Western equine encephalitis							
	Tick-borne encephalitis							
	Anthrax							
	Chikungunya fever						1	10
	Scrub typhus(Tsutsugamushi disease)	1				11	22	398
	Dengue fever	5	1			27		101
	Eastern equine encephalitis							
	Avian influenza (excluding H5N1)							
	Nipah virus infection							
	Japanese spotted fever					1	2	175
	Japanese encephalitis					1		8
	Hantavirus pulmonary syndrome							
	Herpes B virus infection							
	Glanders							
	Brucellosis						1	2
	Venezuelan equine encephalitis							
Hendra virus infection								
Epidemic typhus								
Botulism							6	
Malaria			1		25		73	
Tularemia								
Lyme disease					3	1	8	
Lyssavirus infection(excluding rabies)								
Rift valley fever								
Melioidosis							3	
Legionellosis	2	2	1	2	70	6	784	
Leptospirosis					5	1	26	
Rocky mountain spotted fever								

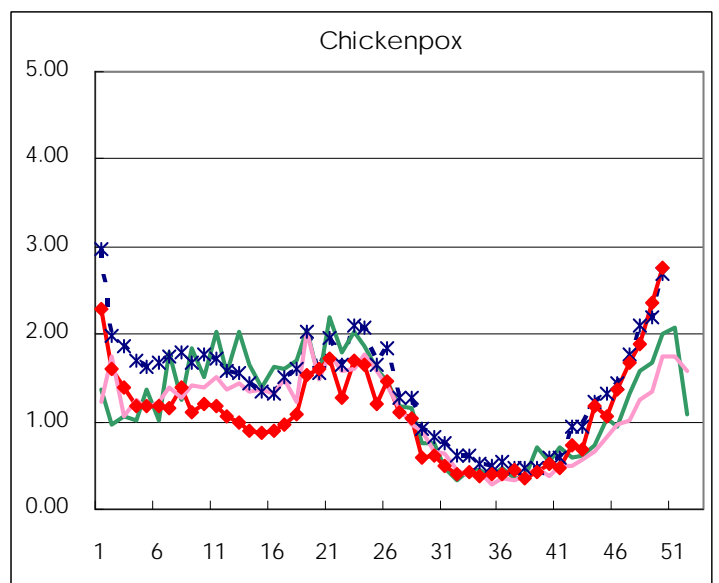
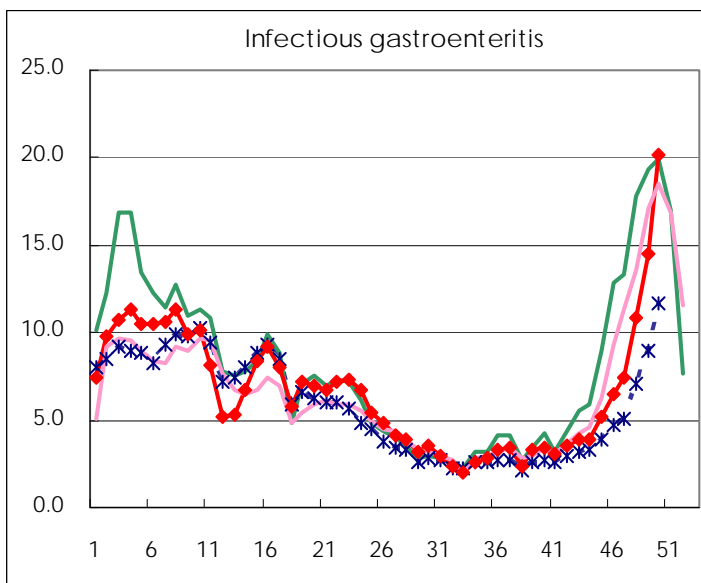
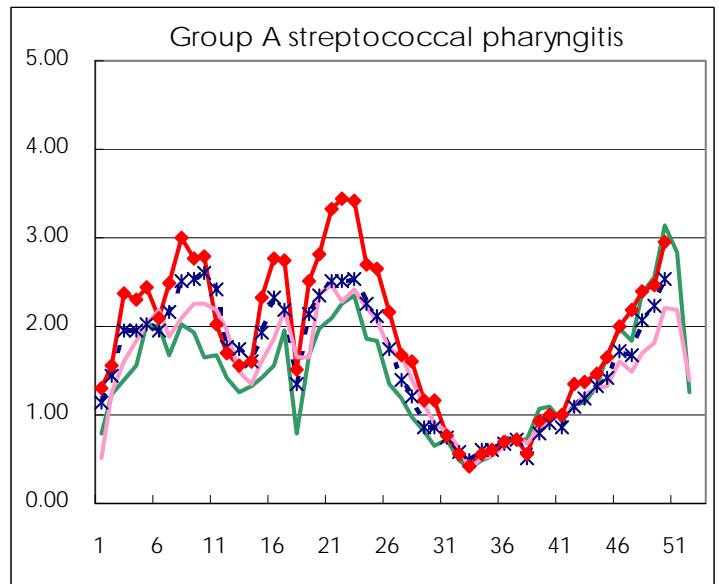
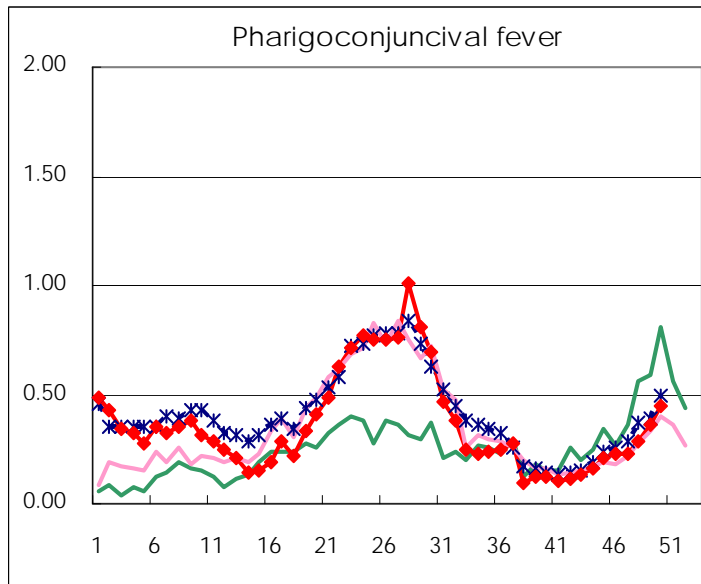
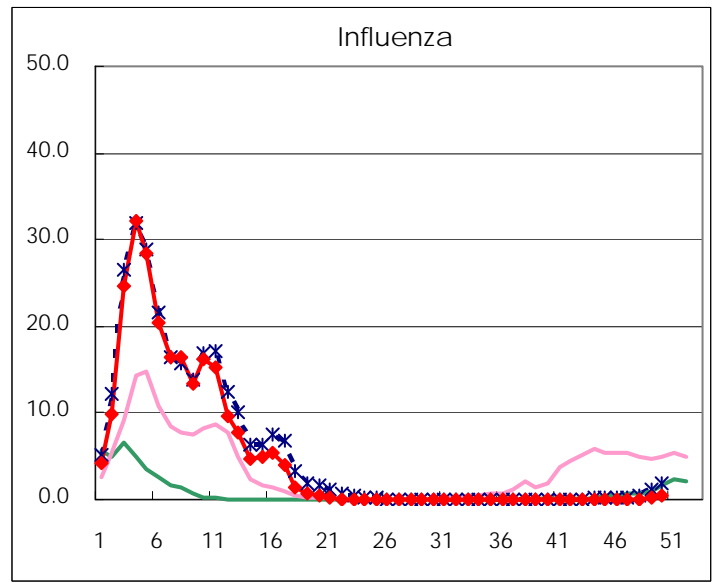
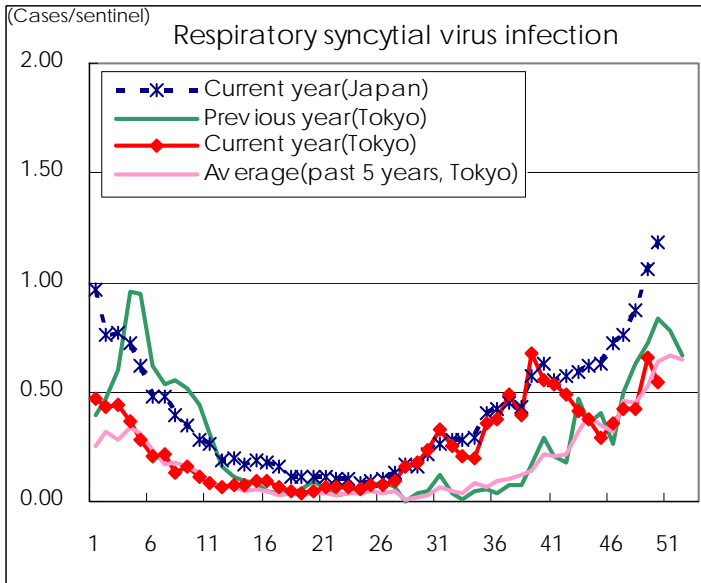
Category	Diseases	Tokyo				Japan		
		47th	48th	49th	50th	Cum 2011	50th	Cum 2011
V	Amebiasis	2	2	3	5	168	10	781
	Viral hepatitis(excluding hepatitis A and E)	2		1	1	37		231
	Acute encephalitis(excluding JE and WNE)			2		19	4	245
	Cryptosporidiosis					2		8
	Creutzfeldt-Jakob disease					13		127
	Severe invasive streptococcal infections(TSLS)				2	30	1	190
	Acquired immunodeficiency syndrome (AIDS)	6	6	8	12	393	16	1,407
	Giardiasis			1		11	2	63
	Meningococcal meningitis					2		11
	Congenital rubella syndrome							1
	Syphilis	5	4	8	10	239	15	783
	Tetanus		1			8		110
	Vancomycin-resistant S. aureus infection							
	Vancomycin-resistant Enterococcus infection		2	1	1	6		64
	Rubella	1			1	31	3	366
	Measles	3				176	2	428

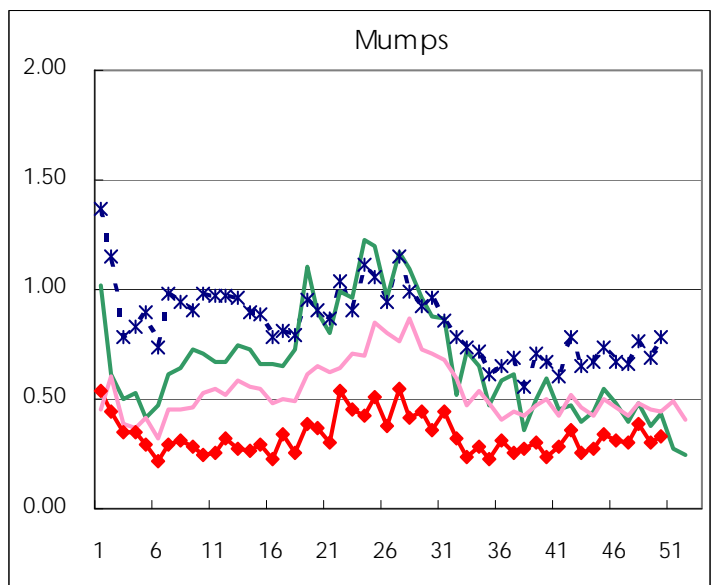
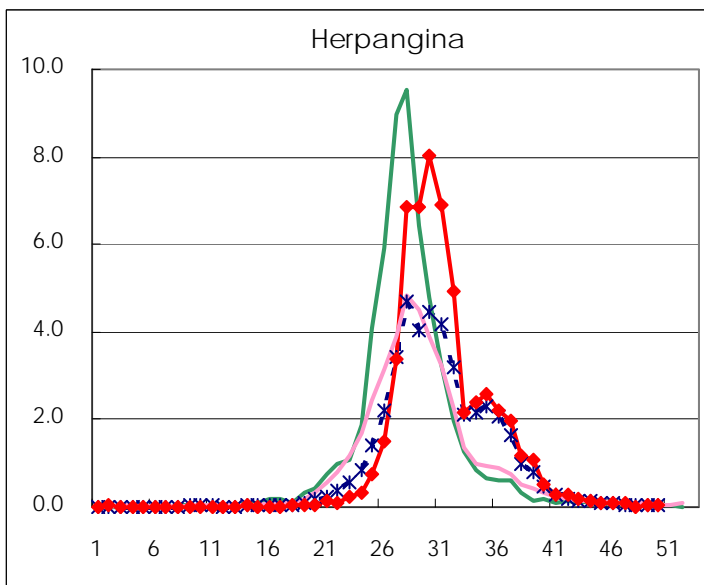
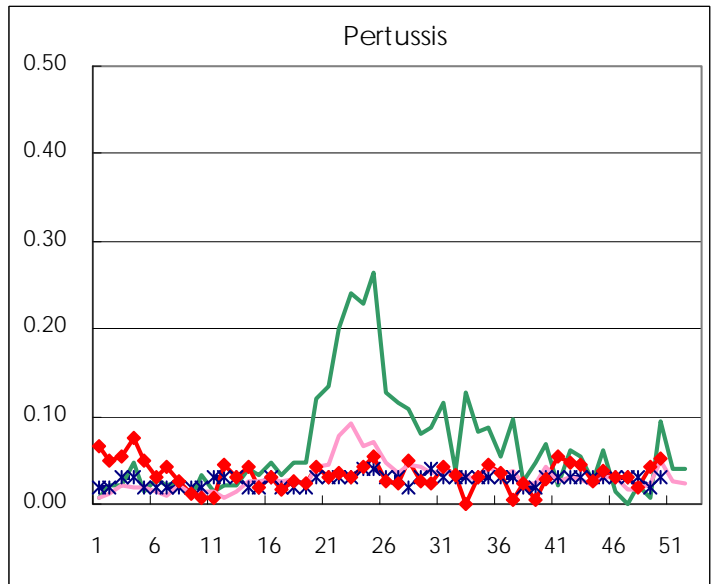
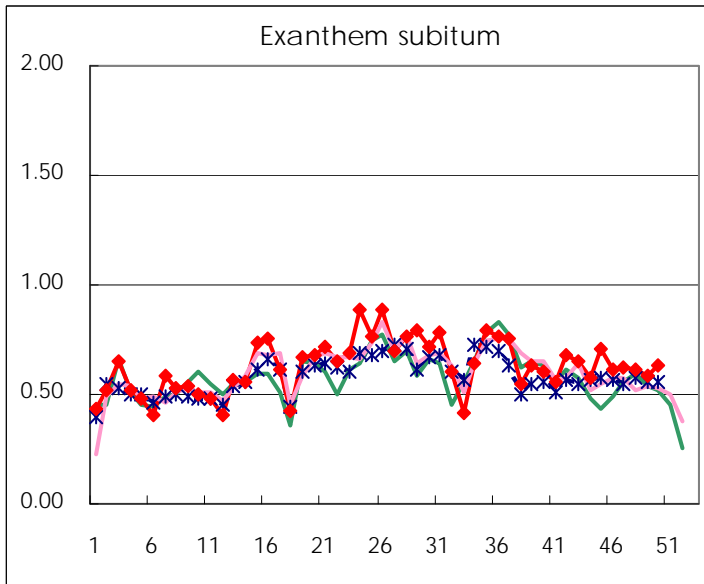
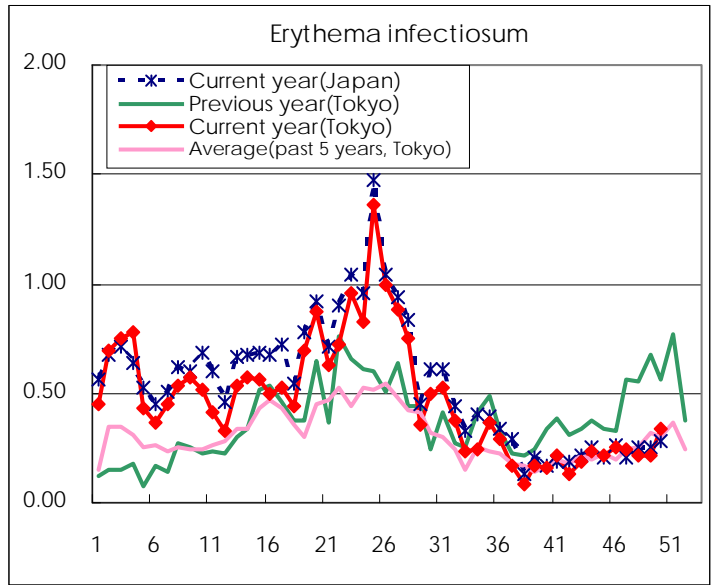
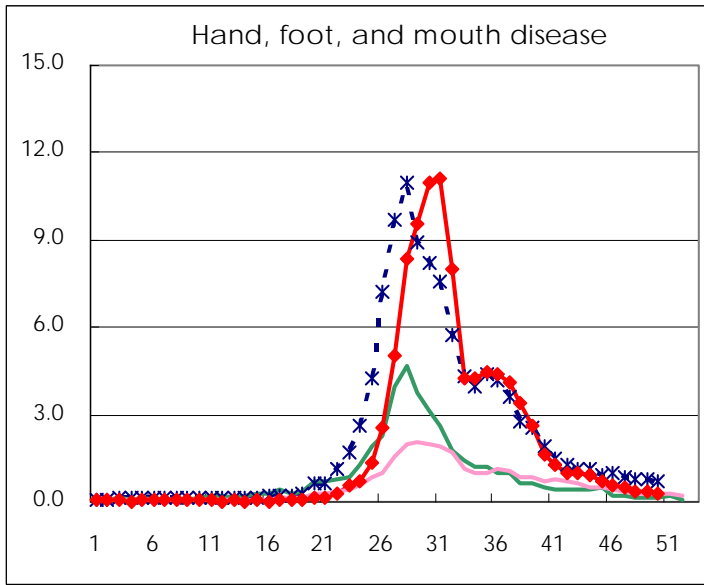
Number of patients with the diseases to be reported
by the designated clinics and hospitals

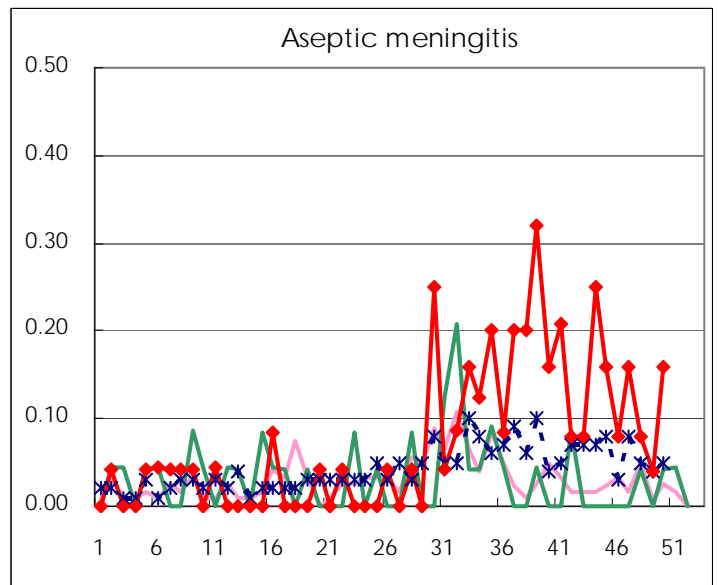
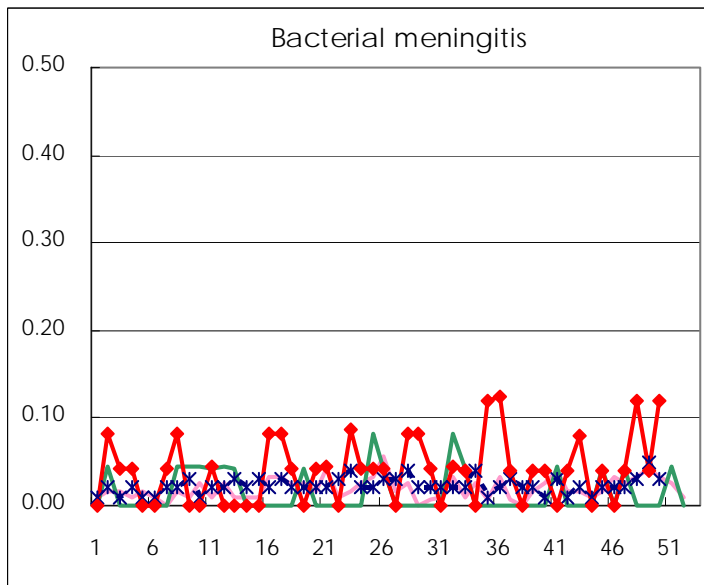
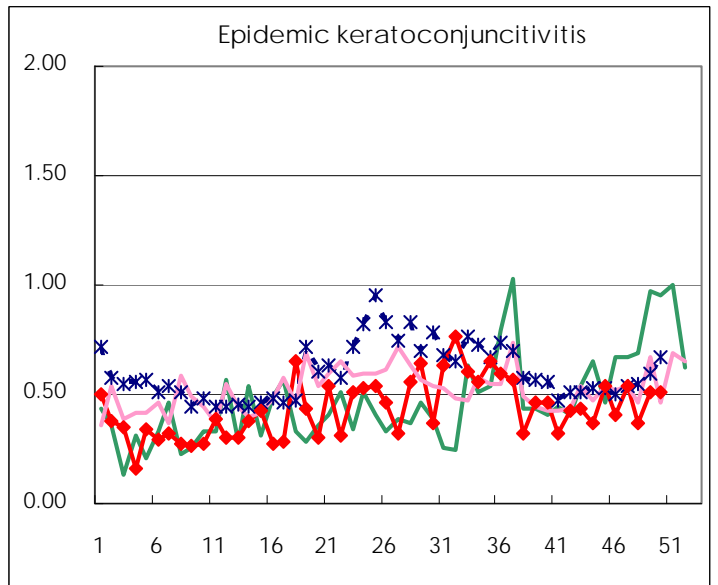
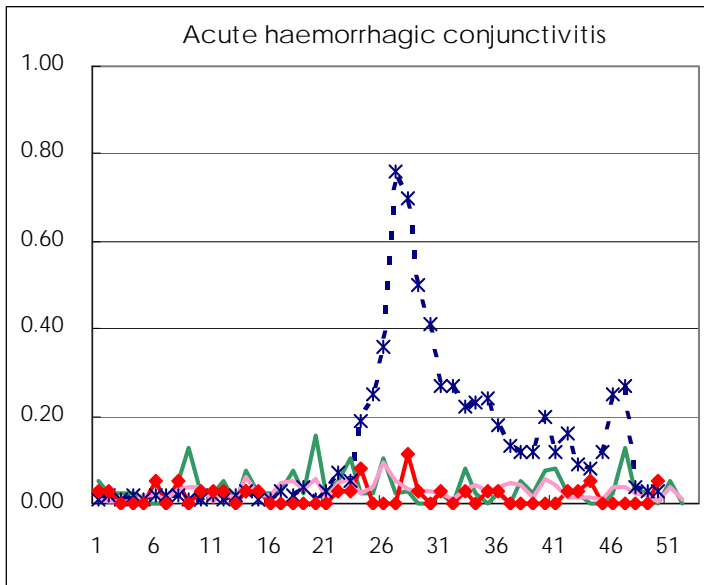
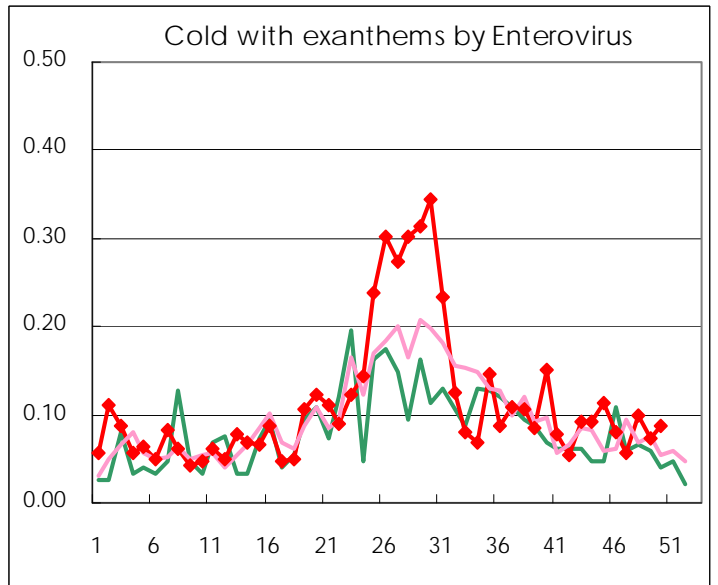
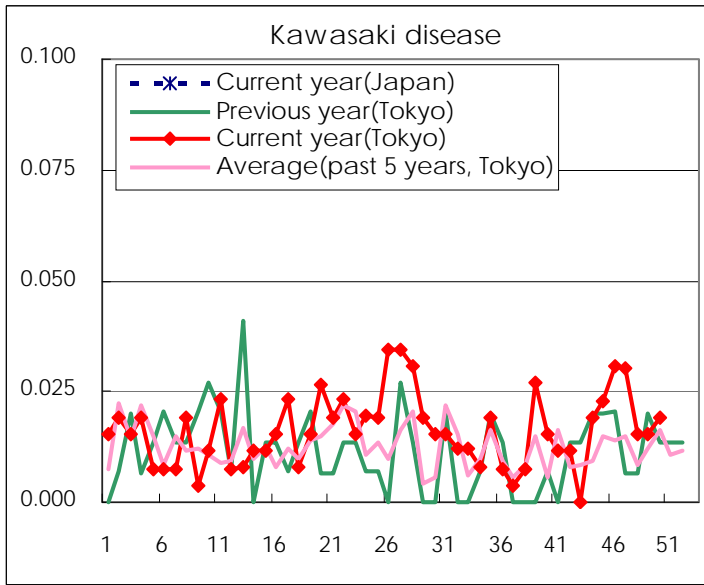
Diseases	2011				
	47th	48th	49th	50th	/sentinel
Respiratory syncytial virus infection	112	111	172	145	0.55
Pharyngoconjunctival fever	60	76	94	117	0.44
Group A streptococcal pharyngitis	574	632	643	781	2.96
Infectious gastroenteritis	1944	2,864	3,811	5,314	20.13
Chickenpox	438	500	618	731	2.77
Hand, foot, and mouth disease	130	98	90	76	0.29
Erythema infectiosum	63	57	56	89	0.34
Exanthem subitum	164	162	153	166	0.63
Pertussis	8	5	11	14	0.05
Herpangina	19	5	12	17	0.06
Mumps	80	101	80	87	0.33
Kawasaki disease	8	4	4	5	0.02
Cold with exanths by Enterovirus	15	26	19	23	0.09
Influenza	29	35	102	190	0.45
Acute hemorrhagic conjunctivitis				2	0.05
Epidemic keratoconjunctivitis	20	14	19	19	0.51
Bacterial meningitis	1	3	1	3	0.12
Aseptic meningitis	4	2	1	4	0.16
Mycoplasma pneumonia	66	40	50	40	1.60
Chlamydial pneumonia (excluding psittacosis)	1	1	1		

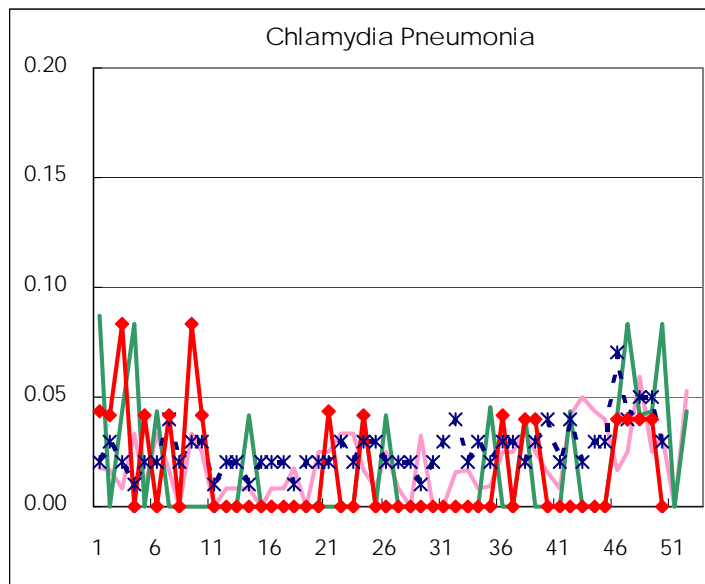
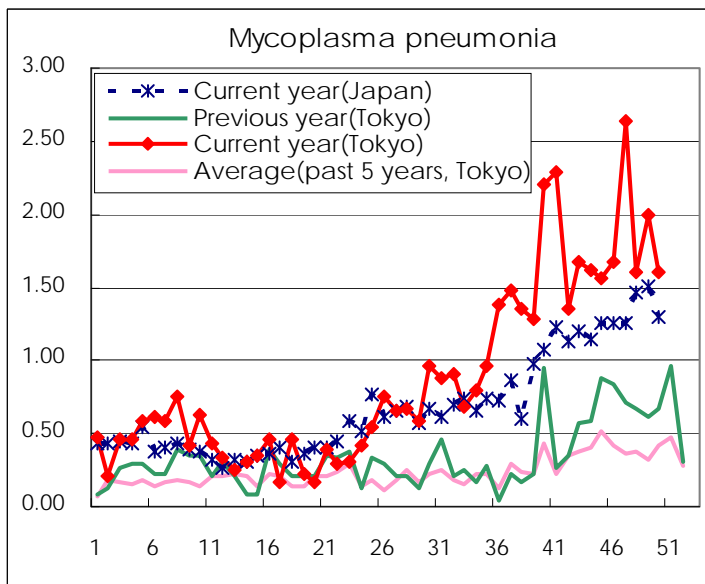
(Blank means 0.)

Disease Trend Graph (weekly reported cases per sentinel in comparison)









Number of sentinel facilities for weekly reporting		
Types of sentinels	Number of sentinels	Sentinels having reported
Pediatric	264	264
Influenza	419	418
Ophthalmic	39	37
Specially-designated	25	25

Tokyo Metropolitan Government
Infectious Disease Surveillance Center