
INFECTIOUS DISEASES WEEKLY REPORT

TOKYO IDWR

Tokyo Metropolitan Infectious Disease Surveillance Center

4 January 2012 / Number 51

Surveillance System in Tokyo, Japan

The infectious diseases which all physicians must report

All physicians must report to health centers the incidence of the diseases which are shown at page one. Health centers electronically report the individual cases to Tokyo Metropolitan Infectious Disease Surveillance Center.

The infectious diseases required to be reported by the sentinels

The numbers of patients who visit the sentinel clinics or hospitals during a week are reported to health centers in Tokyo. And they electronically report the numbers to Tokyo Metropolitan Infectious Disease Surveillance Center. We have about 500 sentinel clinics and hospitals in Tokyo.

1st Week is early January and 52nd Week is end of December.

Tokyo Metropolitan Institute of Public Health
Epidemiological Information Office

TEL:81-3-3363-3213 FAX:81-3-5332-7365

e-mail:idsc@tokyo-eiken.go.jp

URL:idsc.tokyo-eiken.go.jp/

Number of patients with the diseases which all physicians must report

Category	Diseases	Tokyo				Japan		
		48th	49th	50th	51st	Cum 2011	51st	Cum 2011
I	Ebola hemorrhagic fever							
	Crimean-Congo hemorrhagic fever							
	Smallpox							
	South American hemorrhagic fever							
	Plague							
	Marburg disease							
	Lassa fever							
II	Acute poliomyelitis					1		1
	Tuberculosis	122	105	84	56	4,971	357	30,215
	Diphtheria							
	Severe Acute Respiratory Syndrome(SARS)							
	Avian influenza H5N1							
III	Cholera					3	1	11
	Shigellosis	4		1	1	83	2	290
	Enterohemorrhagic Escherichia coli infection	2	2	2		255	25	3,857
	Typhoid fever	1				6		22
	Paratyphoid fever					9		22
IV	Hepatitis E					9		54
	West Nile fever							
	Hepatitis A		1			26	1	175
	Echinococcosis			1		2		15
	Yellow fever							
	Psittacosis					3		13
	Omsk hemorrhagic fever							
	Relapsing fever							
	Kyasanur forest disease							
	Q fever							1
	Rabies							
	Coccidioidomycosis					2		2
	Monkeypox							
	Hemorrhagic fever with renal syndrome							
	Western equine encephalitis							
	Tick-borne encephalitis							
	Anthrax							
	Chikungunya fever							10
	Scrub typhus(Tsutsugamushi disease)					11	9	412
	Dengue fever	1				27	1	103
	Eastern equine encephalitis							
	Avian influenza (excluding H5N1)							
	Nipah virus infection							
	Japanese spotted fever					1	1	176
	Japanese encephalitis					1		9
	Hantavirus pulmonary syndrome							
	Herpes B virus infection							
	Glanders							
	Brucellosis							2
	Venezuelan equine encephalitis							
	Hendra virus infection							
	Epidemic typhus							
Botulism							6	
Malaria		1		2	27	2	75	
Tularemia								
Lyme disease					3		8	
Lyssavirus infection(excluding rabies)								
Rift valley fever								
Melioidosis							3	
Legionellosis	2	1	2	1	71	8	797	
Leptospirosis					5		26	
Rocky mountain spotted fever								

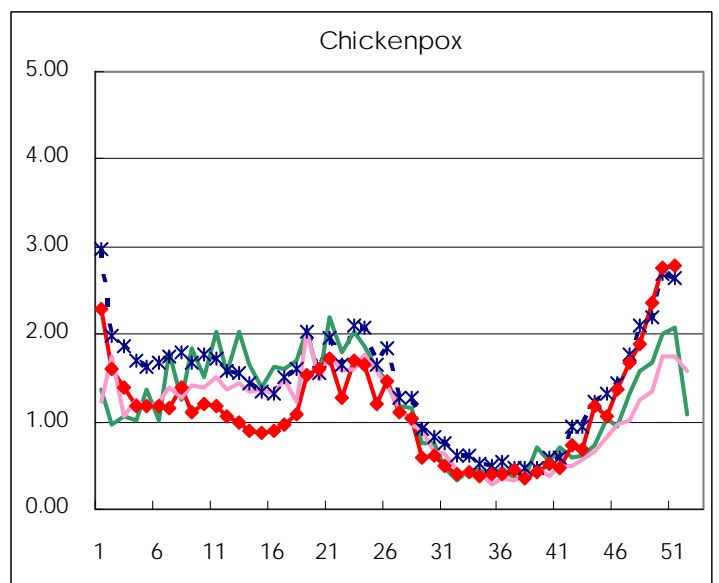
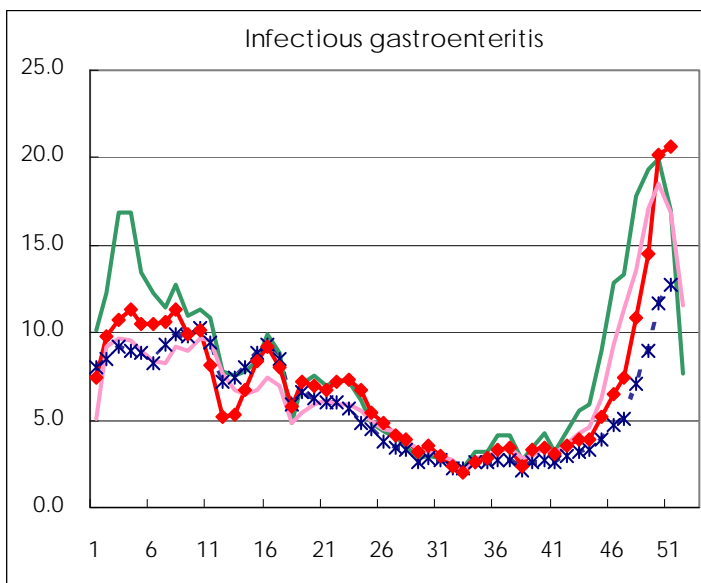
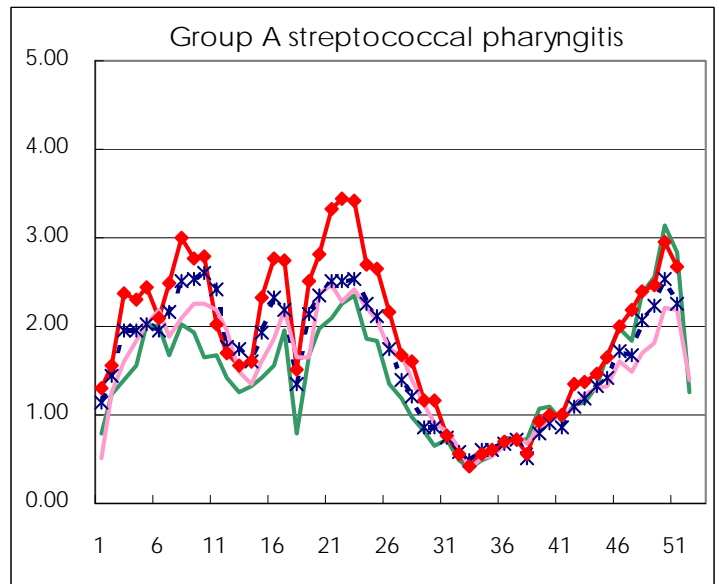
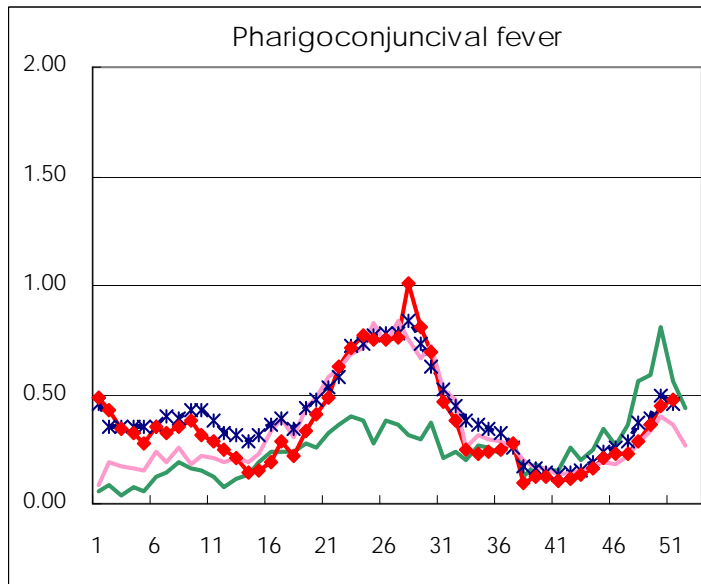
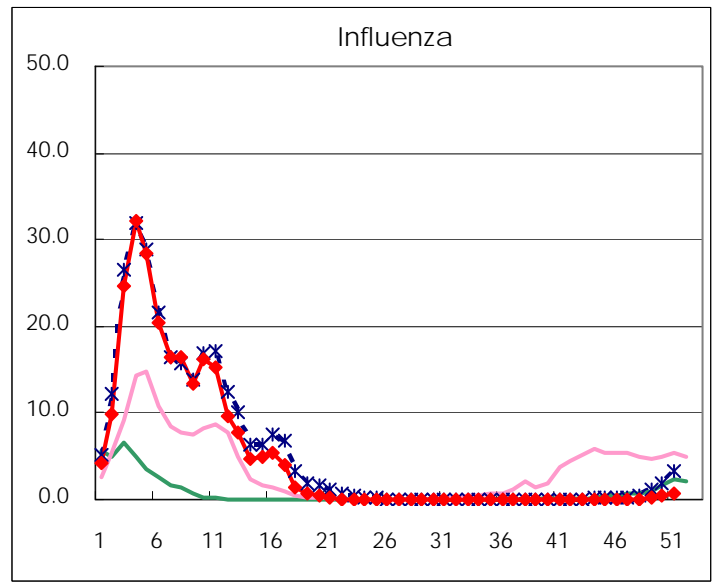
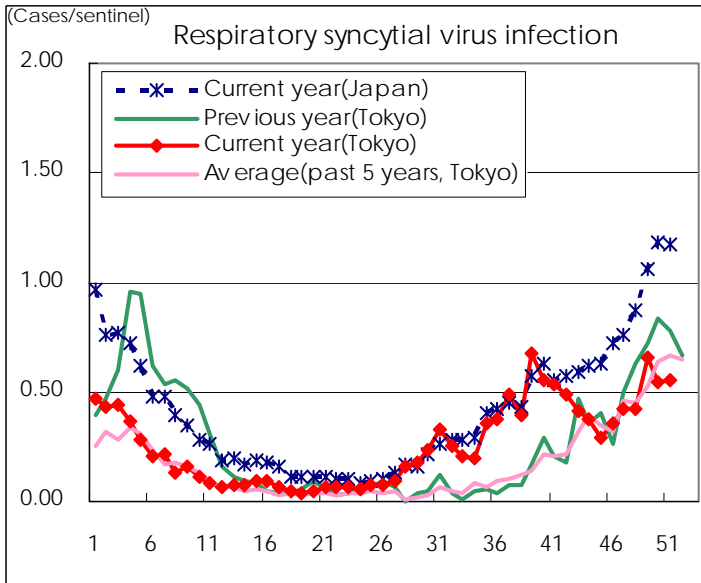
Category	Diseases	Tokyo				Japan		
		48th	49th	50th	51st	Cum 2011	51st	Cum 2011
V	Amebiasis	2	3	5	4	172	6	793
	Viral hepatitis(excluding hepatitis A and E)		1	1	2	39	4	239
	Acute encephalitis(excluding JE and WNE)		2			19		244
	Cryptosporidiosis					2		8
	Creutzfeldt-Jakob disease					13		129
	Severe invasive streptococcal infections(TSLS)			2		30		190
	Acquired immunodeficiency syndrome (AIDS)	6	8	12	2	395	8	1,439
	Giardiasis		1		1	12	2	66
	Meningococcal meningitis					2		12
	Congenital rubella syndrome							1
	Syphilis	4	8	10	3	242	8	805
	Tetanus	1				8	1	111
	Vancomycin-resistant S. aureus infection							
	Vancomycin-resistant Enterococcus infection	2	1	1		6	1	66
	Rubella			1	1	32		368
	Measles					177	3	433

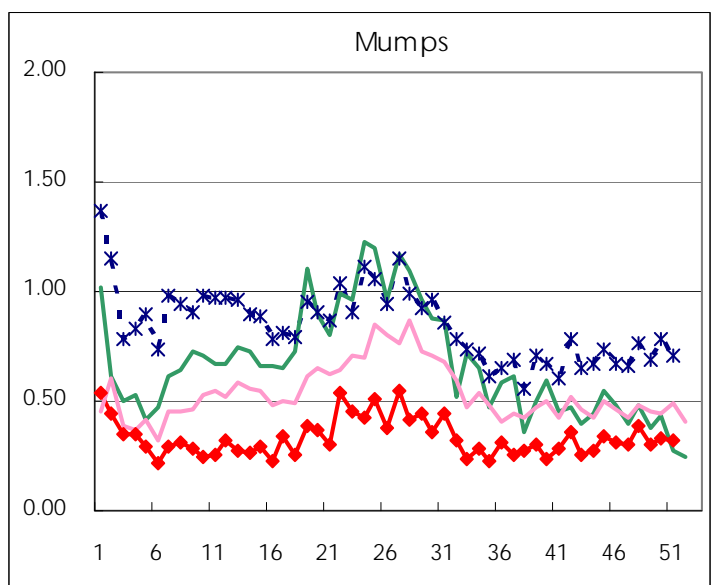
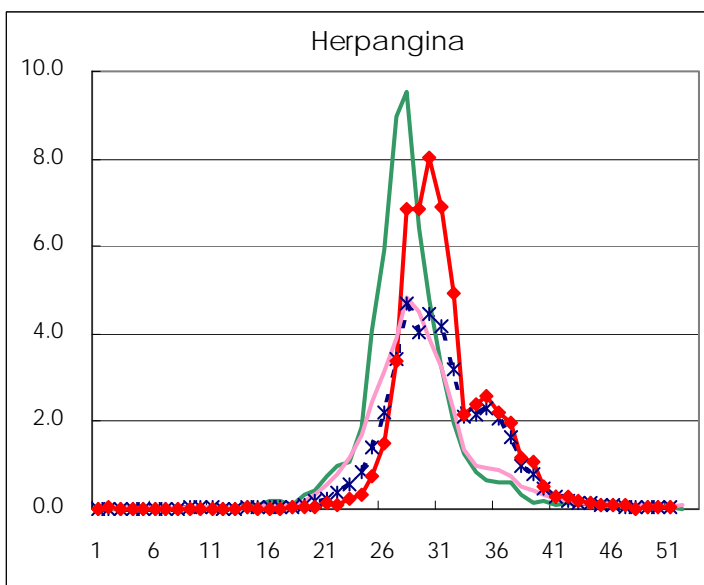
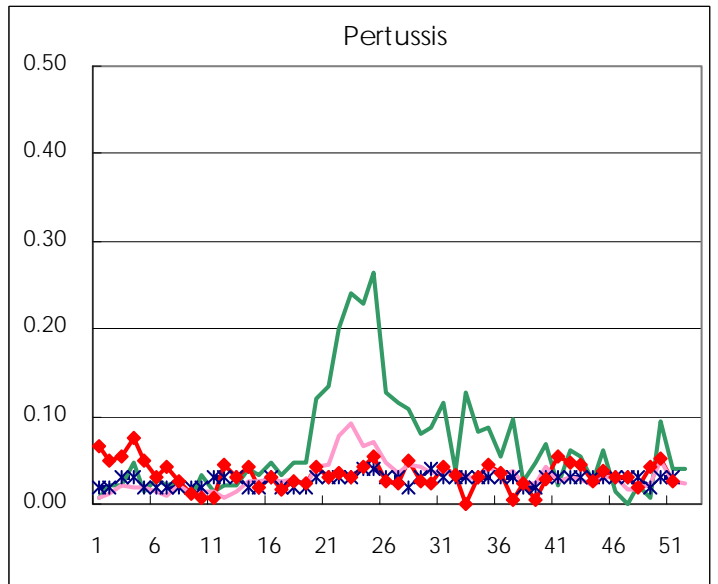
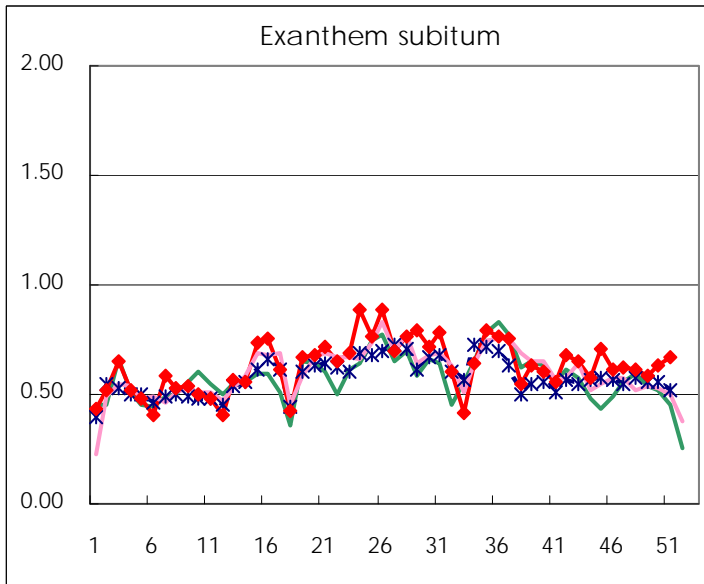
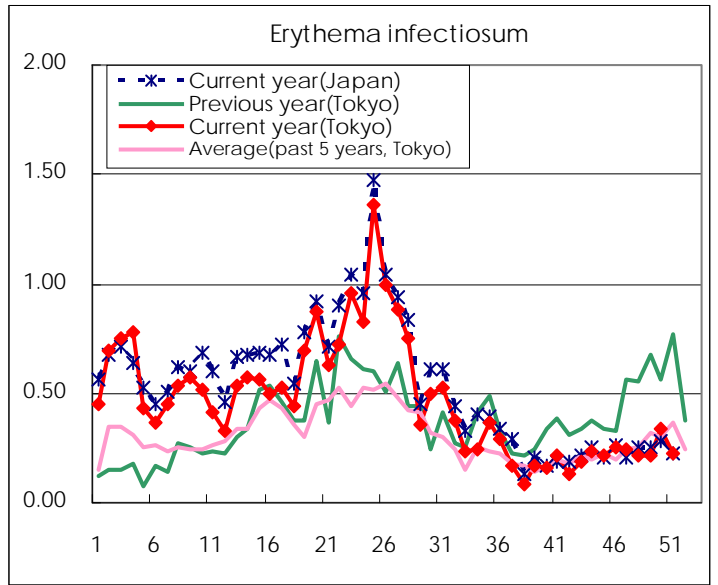
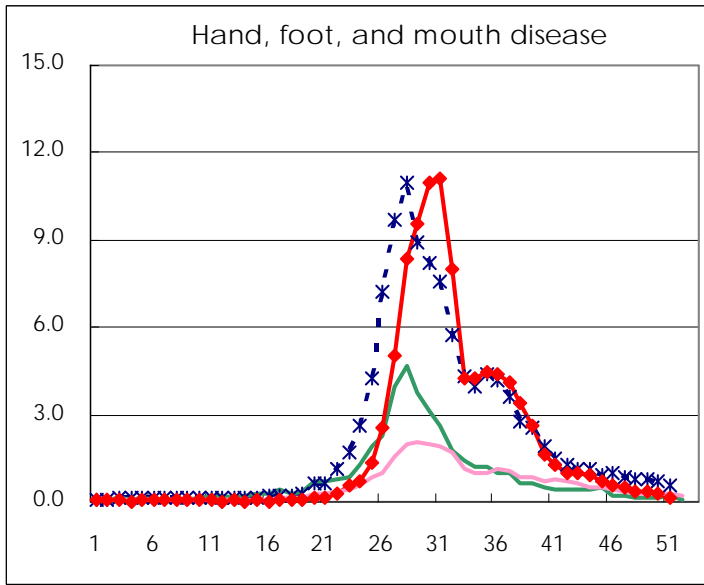
Number of patients with the diseases to be reported
by the designated clinics and hospitals

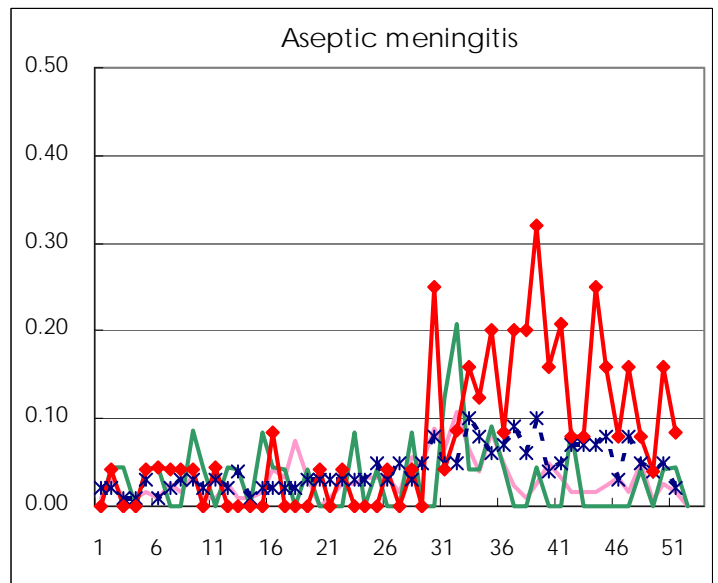
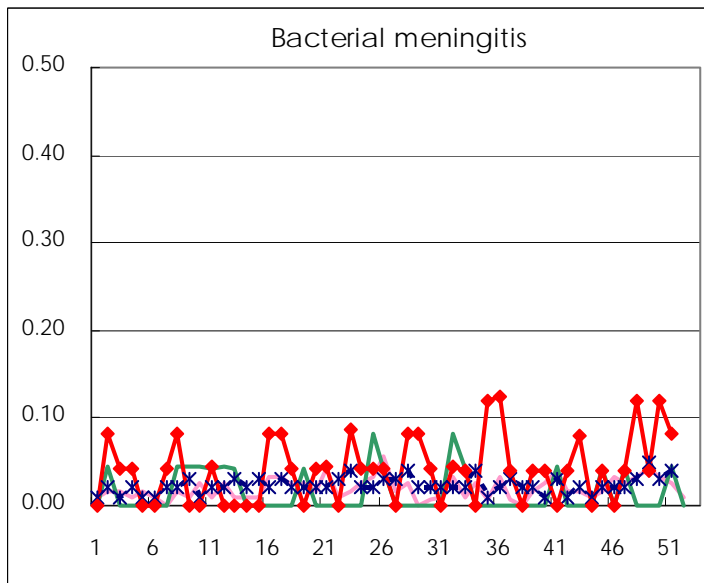
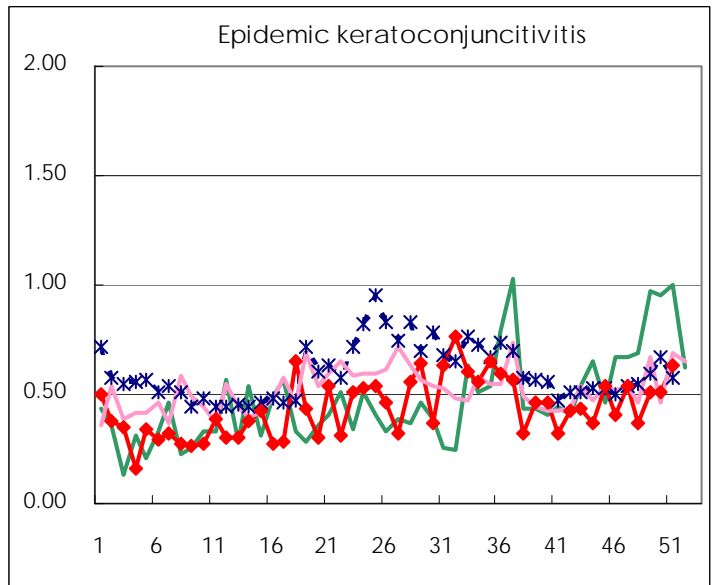
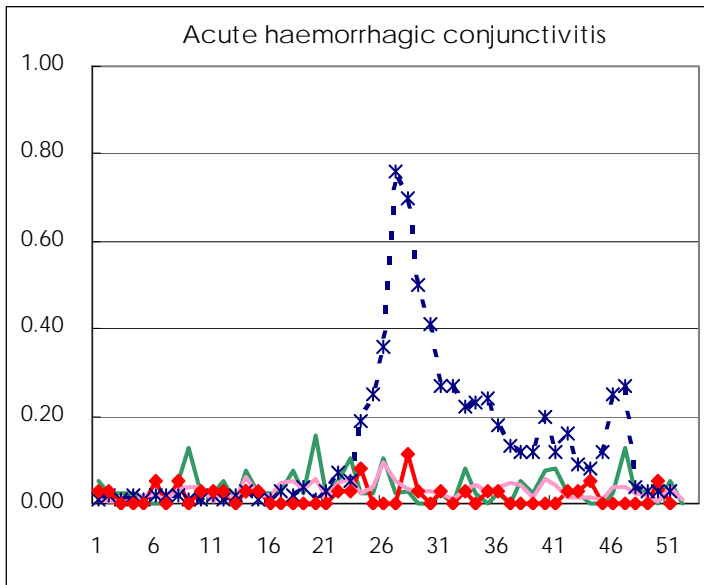
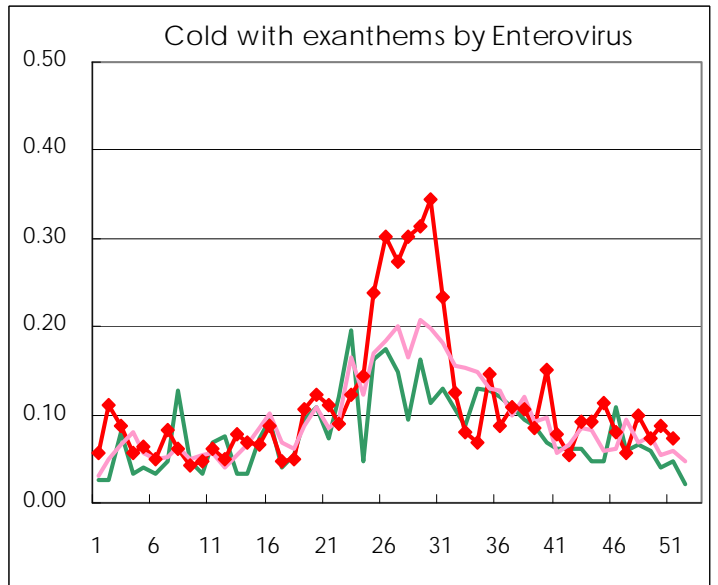
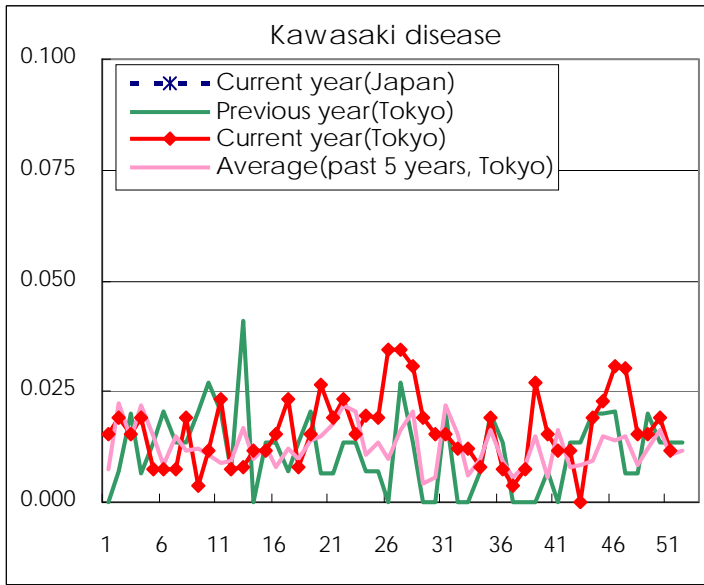
Diseases	2011				
	48th	49th	50th	51st	/sentinel
Respiratory syncytial virus infection	111	172	145	144	0.55
Pharyngoconjunctival fever	76	94	117	125	0.48
Group A streptococcal pharyngitis	632	643	781	701	2.68
Infectious gastroenteritis	2864	3,811	5,314	5,413	20.66
Chickenpox	500	618	731	732	2.79
Hand, foot, and mouth disease	98	90	76	35	0.13
Erythema infectiosum	57	56	89	59	0.23
Exanthem subitum	162	153	166	176	0.67
Pertussis	5	11	14	7	0.03
Herpangina	5	12	17	11	0.04
Mumps	101	80	87	85	0.32
Kawasaki disease	4	4	5	3	0.01
Cold with exanths by Enterovirus	26	19	23	19	0.07
Influenza	35	102	190	291	0.70
Acute hemorrhagic conjunctivitis			2		
Epidemic keratoconjunctivitis	14	19	19	24	0.63
Bacterial meningitis	3	1	3	2	0.08
Aseptic meningitis	2	1	4	2	0.08
Mycoplasma pneumonia	40	50	40	32	1.33
Chlamydial pneumonia (excluding psittacosis)	1	1			

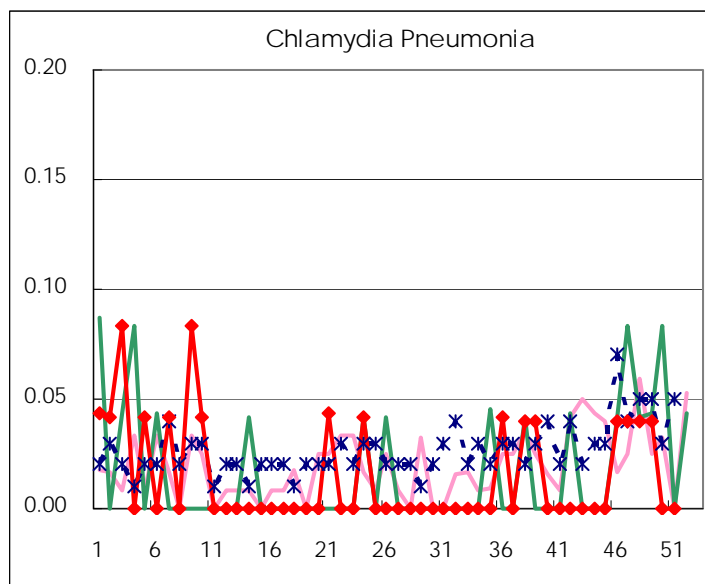
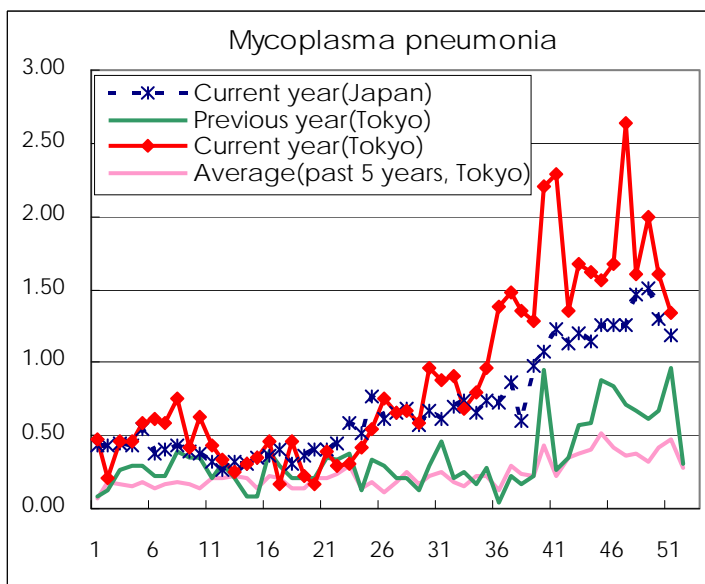
(Blank means 0.)

Disease Trend Graph (weekly reported cases per sentinel in comparison)









Number of sentinel facilities for weekly reporting		
Types of sentinels	Number of sentinels	Sentinels having reported
Pediatric	264	262
Influenza	419	417
Ophthalmic	39	38
Specially-designated	25	24

Tokyo Metropolitan Government
Infectious Disease Surveillance Center