
INFECTIOUS DISEASES WEEKLY REPORT

TOKYO IDWR

Tokyo Metropolitan Infectious Disease Surveillance Center

6 January 2012 / Number 52

Surveillance System in Tokyo, Japan

The infectious diseases which all physicians must report

All physicians must report to health centers the incidence of the diseases which are shown at page one. Health centers electronically report the individual cases to Tokyo Metropolitan Infectious Disease Surveillance Center.

The infectious diseases required to be reported by the sentinels

The numbers of patients who visit the sentinel clinics or hospitals during a week are reported to health centers in Tokyo. And they electronically report the numbers to Tokyo Metropolitan Infectious Disease Surveillance Center. We have about 500 sentinel clinics and hospitals in Tokyo.

1st Week is early January and 52nd Week is end of December.

Tokyo Metropolitan Institute of Public Health
Epidemiological Information Office

TEL:81-3-3363-3213 FAX:81-3-5332-7365

e-mail:idsc@tokyo-eiken.go.jp

URL:idsc.tokyo-eiken.go.jp/

Number of patients with the diseases which all physicians must report

Category	Diseases	Tokyo				Japan		
		49th	50th	51st	52nd	Cum 2011	52nd	Cum 2011
I	Ebola hemorrhagic fever							
	Crimean-Congo hemorrhagic fever							
	Smallpox							
	South American hemorrhagic fever							
	Plague							
	Marburg disease							
	Lassa fever							
II	Acute poliomyelitis					1		1
	Tuberculosis	108	85	75	59	5,061	344	30,810
	Diphtheria							
	Severe Acute Respiratory Syndrome(SARS)							
	Avian influenza H5N1							
III	Cholera					3	1	12
	Shigellosis		1	1	3	86	6	296
	Enterohemorrhagic Escherichia coli infection	2	2		1	257	38	3,900
	Typhoid fever					6		22
	Paratyphoid fever					9		22
IV	Hepatitis E					9		54
	West Nile fever							
	Hepatitis A	1			1	27	1	176
	Echinococcosis		1			2		15
	Yellow fever							
	Psittacosis					3		13
	Omsk hemorrhagic fever							
	Relapsing fever							
	Kyasanur forest disease							
	Q fever							1
	Rabies							
	Coccidioidomycosis					2		2
	Monkeypox							
	Hemorrhagic fever with renal syndrome							
	Western equine encephalitis							
	Tick-borne encephalitis							
	Anthrax							
	Chikungunya fever							10
	Scrub typhus(Tsutsugamushi disease)				1	12	19	438
	Dengue fever					27		104
	Eastern equine encephalitis							
	Avian influenza (excluding H5N1)							
	Nipah virus infection							
	Japanese spotted fever					1		178
	Japanese encephalitis					1		9
	Hantavirus pulmonary syndrome							
	Herpes B virus infection							
	Glanders							
	Brucellosis							2
	Venezuelan equine encephalitis							
	Hendra virus infection							
Epidemic typhus								
Botulism							6	
Malaria	1		2		27	1	76	
Tularemia								
Lyme disease					3		8	
Lyssavirus infection(excluding rabies)								
Rift valley fever								
Melioidosis							3	
Legionellosis	1	2	1	1	72	3	804	
Leptospirosis					5		26	
Rocky mountain spotted fever								

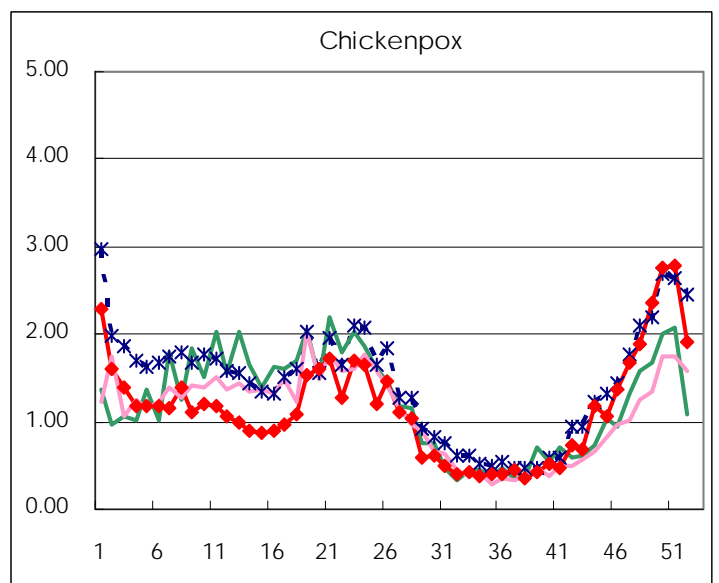
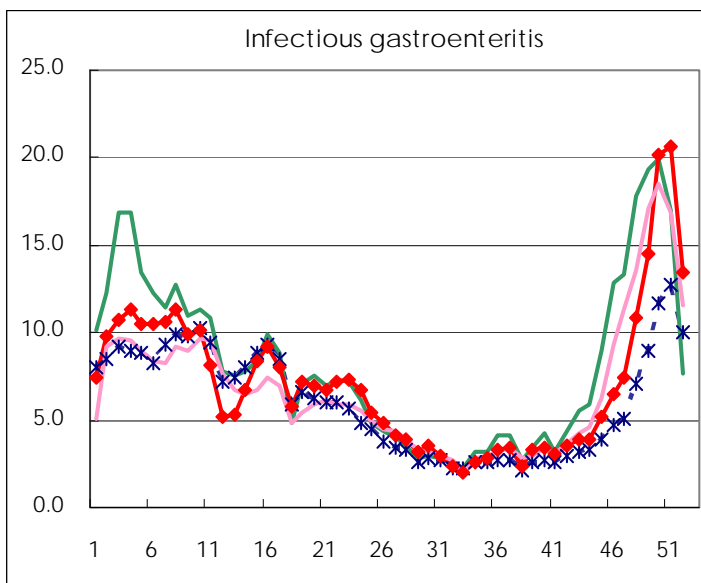
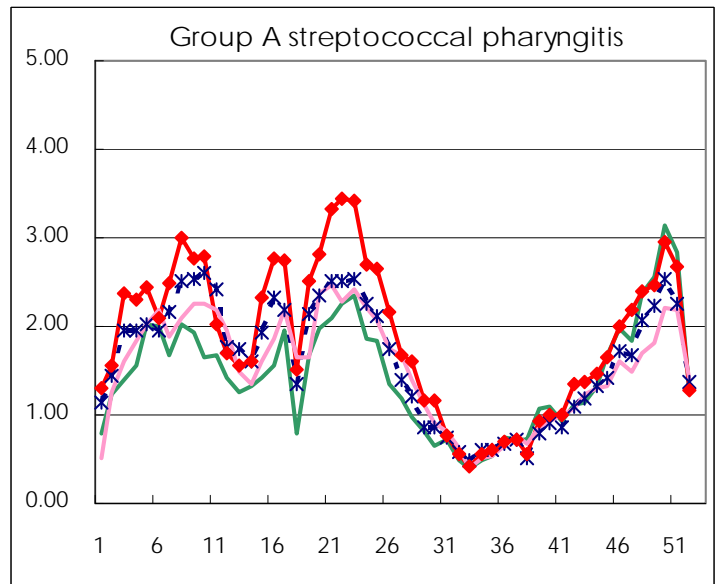
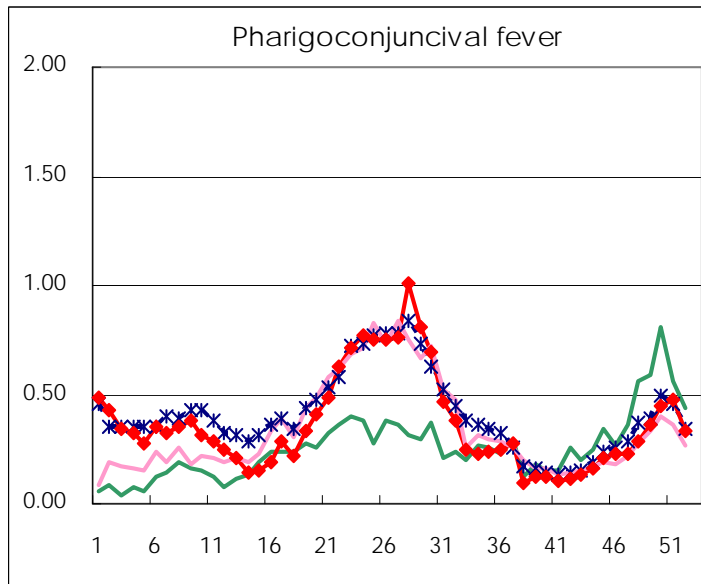
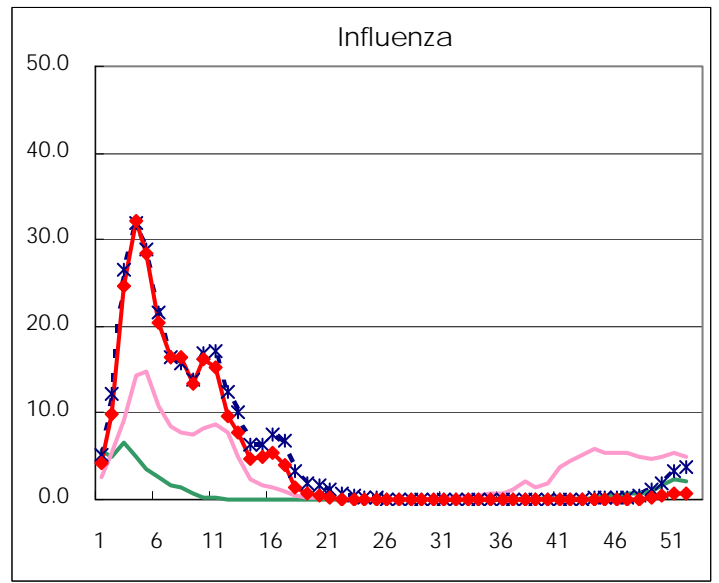
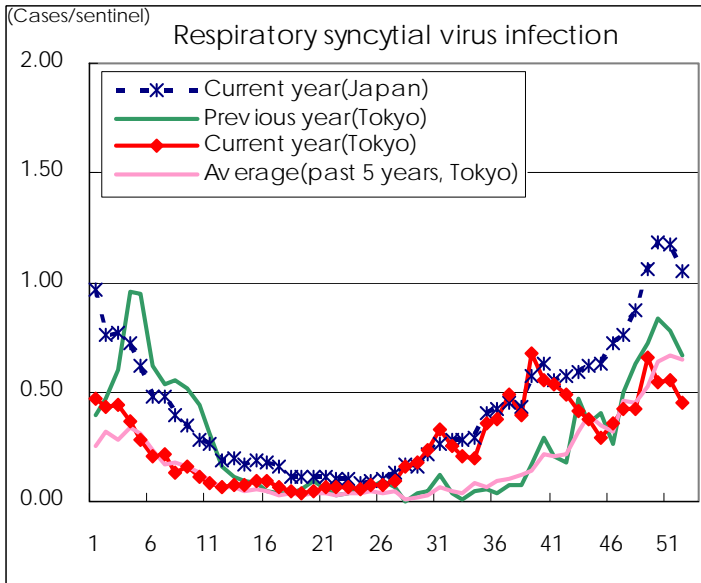
Category	Diseases	Tokyo				Japan		
		49th	50th	51st	52nd	Cum 2011	52nd	Cum 2011
V	Amebiasis	3	5	5	4	177	4	803
	Viral hepatitis(excluding hepatitis A and E)	1	1	2	1	40	1	241
	Acute encephalitis(excluding JE and WNE)	2				19	3	249
	Cryptosporidiosis					2		8
	Creutzfeldt-Jakob disease					13		130
	Severe invasive streptococcal infections(TSLS)		2			30	1	192
	Acquired immunodeficiency syndrome (AIDS)	8	12	2	14	409	10	1,478
	Giardiasis	1		2		13		67
	Meningococcal meningitis					2		12
	Congenital rubella syndrome							1
	Syphilis	8	10	3	6	248	10	817
	Tetanus					8		111
	Vancomycin-resistant S. aureus infection							
	Vancomycin-resistant Enterococcus infection	1	1			6	2	68
	Rubella		1	1		32	1	369
	Measles					177		434

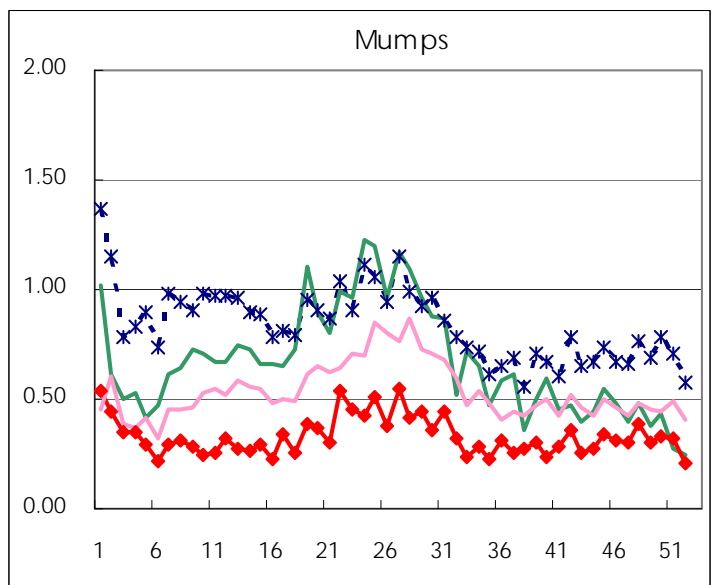
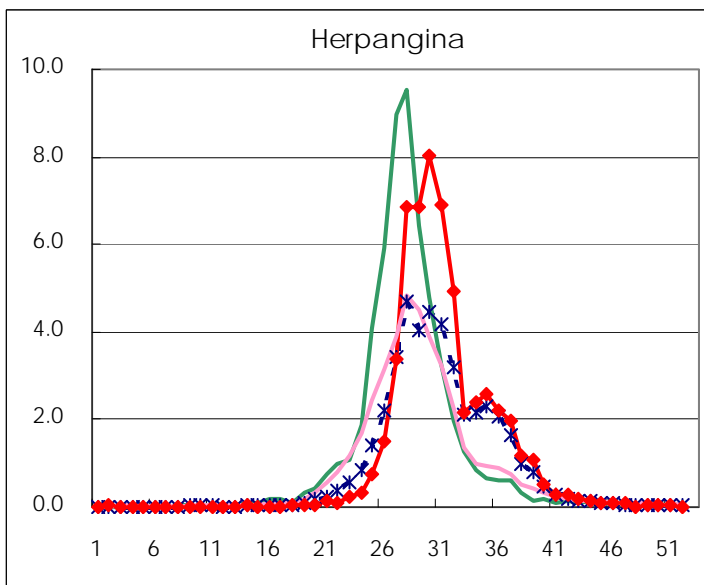
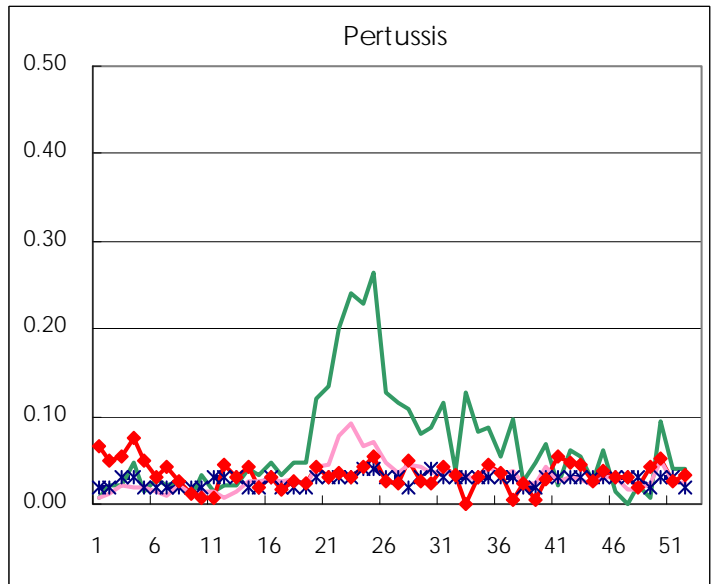
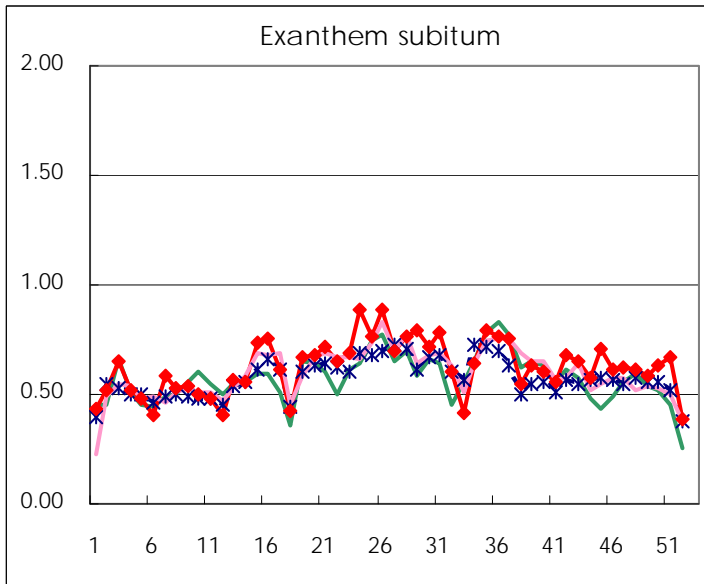
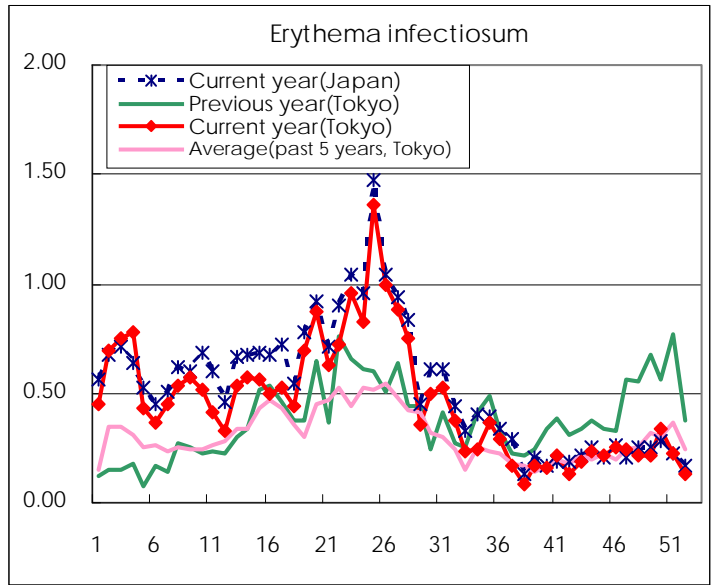
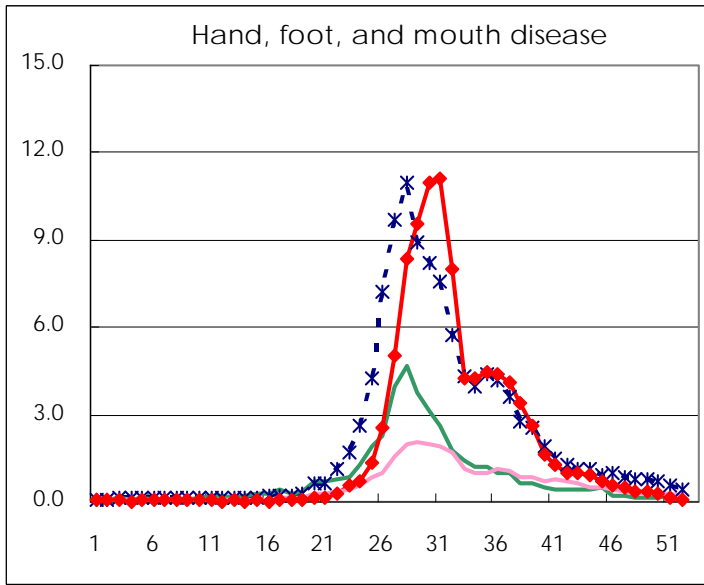
Number of patients with the diseases to be reported
by the designated clinics and hospitals

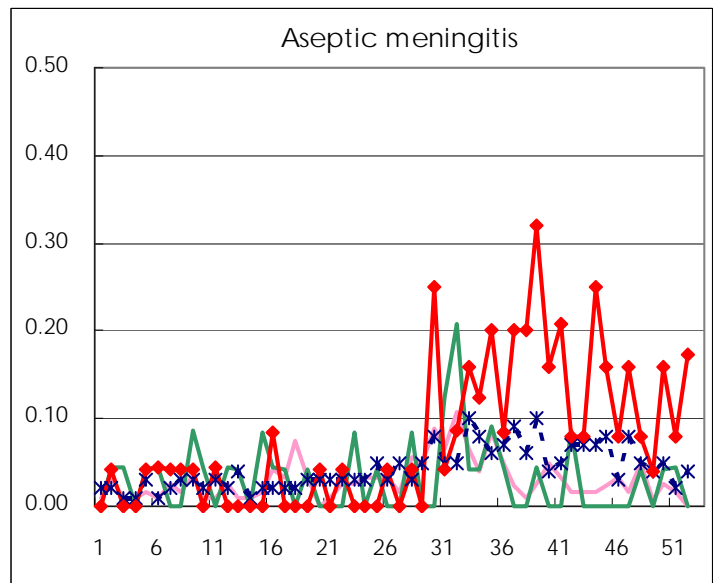
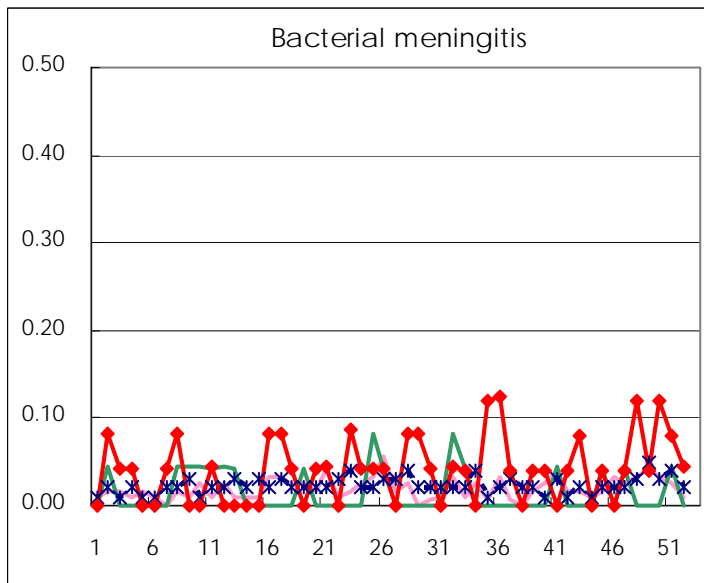
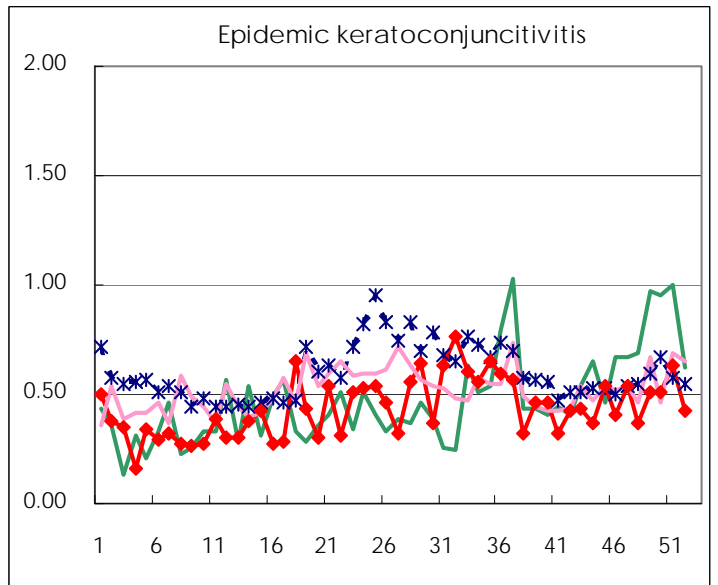
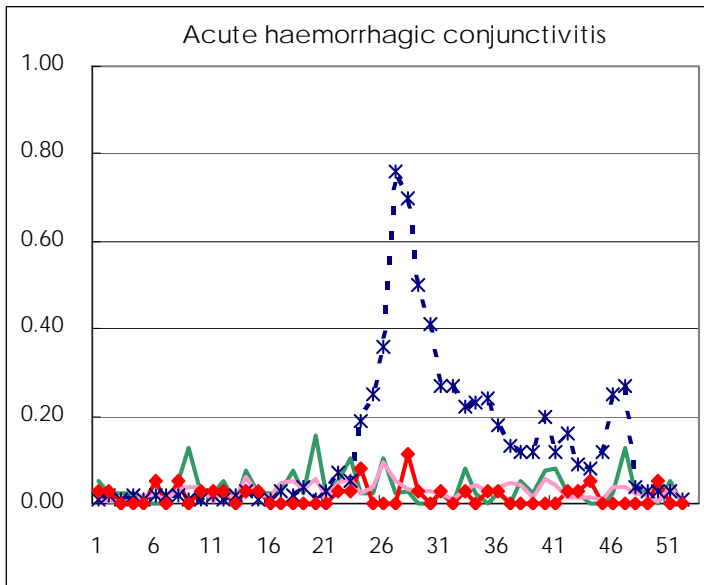
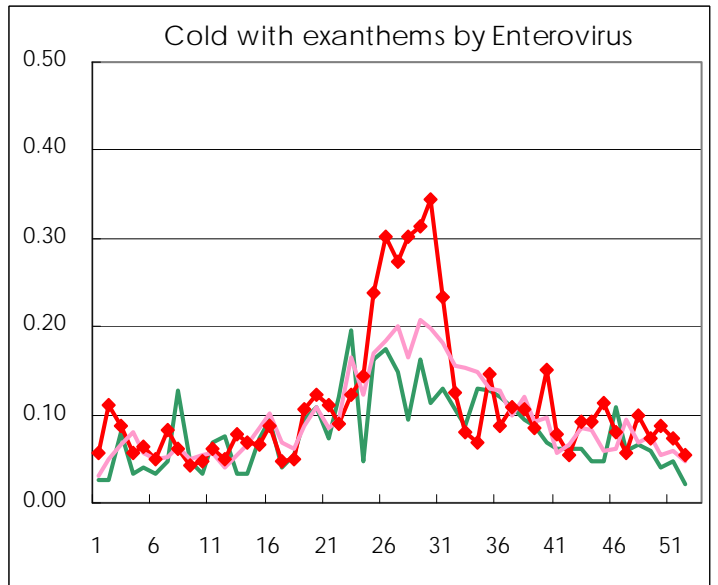
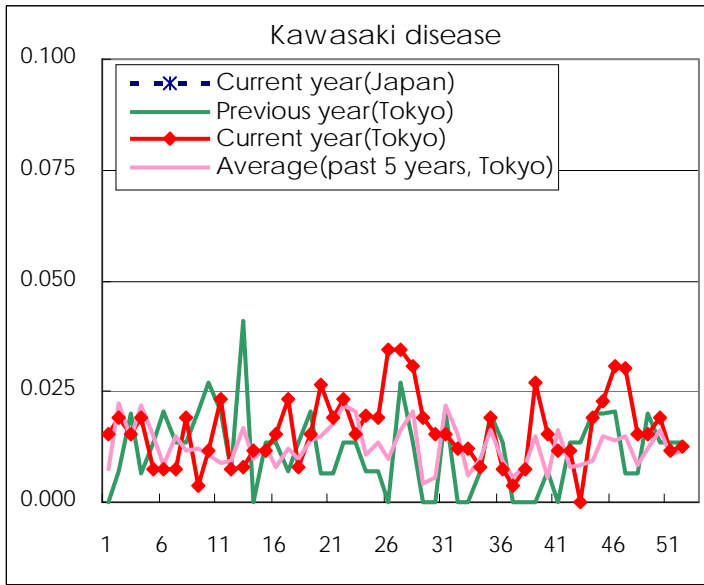
Diseases	2011				
	49th	50th	51st	52nd	/sentinel
Respiratory syncytial virus infection	172	145	144	108	0.45
Pharyngoconjunctival fever	94	117	125	79	0.33
Group A streptococcal pharyngitis	643	781	701	306	1.29
Infectious gastroenteritis	3811	5,314	5,413	3,203	13.46
Chickenpox	618	731	732	455	1.91
Hand, foot, and mouth disease	90	76	35	15	0.06
Erythema infectiosum	56	89	59	32	0.13
Exanthem subitum	153	166	176	92	0.39
Pertussis	11	14	7	8	0.03
Herpangina	12	17	11	2	0.01
Mumps	80	87	85	49	0.21
Kawasaki disease	4	5	3	3	0.01
Cold with exanthems by Enterovirus	19	23	19	13	0.05
Influenza	102	190	291	311	0.82
Acute hemorrhagic conjunctivitis		2			
Epidemic keratoconjunctivitis	19	19	24	15	0.43
Bacterial meningitis	1	3	2	1	0.04
Aseptic meningitis	1	4	2	4	0.17
Mycoplasma pneumonia	52	41	33	38	1.65
Chlamydial pneumonia (excluding psittacosis)	1				

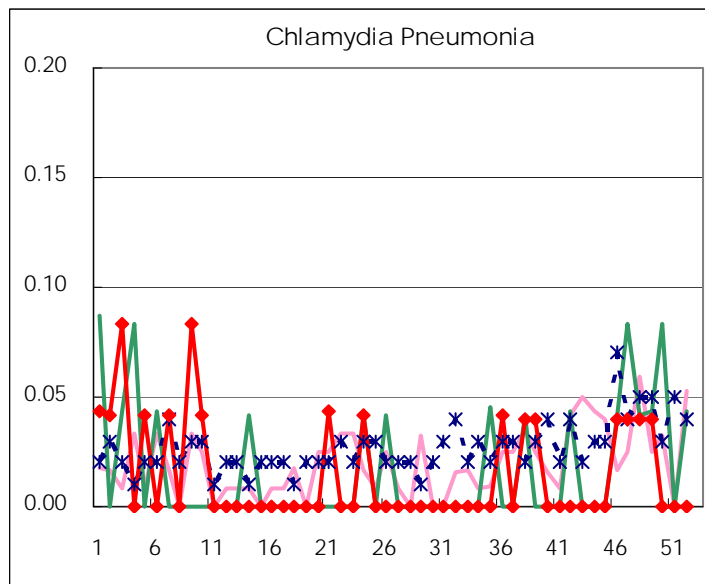
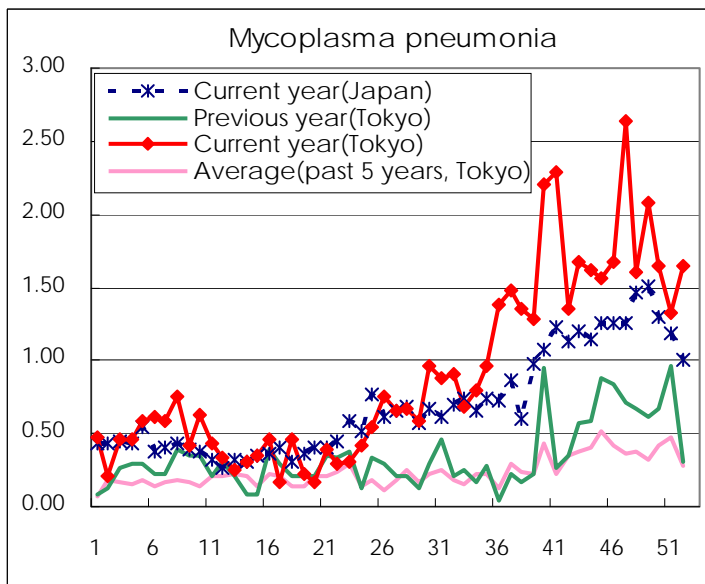
(Blank means 0.)

Disease Trend Graph (weekly reported cases per sentinel in comparison)









Number of sentinel facilities for weekly reporting		
Types of sentinels	Number of sentinels	Sentinels having reported
Pediatric	264	238
Influenza	419	379
Ophthalmic	39	35
Specially-designated	25	23

Tokyo Metropolitan Government
Infectious Disease Surveillance Center