
INFECTIOUS DISEASES WEEKLY REPORT

TOKYO IDWR

Tokyo Metropolitan Infectious Disease Surveillance Center

8 March 2012 / Number 9

Surveillance System in Tokyo, Japan

The infectious diseases which all physicians must report

All physicians must report to health centers the incidence of the diseases which are shown at page one. Health centers electronically report the individual cases to Tokyo Metropolitan Infectious Disease Surveillance Center.

The infectious diseases required to be reported by the sentinels

The numbers of patients who visit the sentinel clinics or hospitals during a week are reported to health centers in Tokyo. And they electronically report the numbers to Tokyo Metropolitan Infectious Disease Surveillance Center. We have about 500 sentinel clinics and hospitals in Tokyo.

1st Week is early January and 52nd Week is end of December.

Tokyo Metropolitan Institute of Public Health
Epidemiological Information Office

TEL:81-3-3363-3213 FAX:81-3-5332-7365

e-mail:idsc@tokyo-eiken.go.jp

URL:idsc.tokyo-eiken.go.jp/

Number of patients with the diseases which all physicians must report

Category	Diseases	Tokyo				Japan		
		6th	7th	8th	9th	Cum 2012	9th	Cum 2012
I	Ebola hemorrhagic fever							
	Crimean-Congo hemorrhagic fever							
	Smallpox							
	South American hemorrhagic fever							
	Plague							
	Marburg disease							
	Lassa fever							
II	Acute poliomyelitis							
	Tuberculosis	80	72	79	56	662	388	4,225
	Diphtheria							
	Severe Acute Respiratory Syndrome(SARS)							
III	Avian influenza H5N1							
	Cholera							1
	Shigellosis	2	1	1	4	12	7	33
	Enterohemorrhagic Escherichia coli infection	1	1	2	2	7	6	98
	Typhoid fever	1	2			3		4
IV	Paratyphoid fever	1				2	1	4
	Hepatitis E	1	2			5	2	30
	West Nile fever							
	Hepatitis A		1			1	4	21
	Echinococcosis							1
	Yellow fever							
	Psittacosis							1
	Omsk hemorrhagic fever							
	Relapsing fever							
	Kyasanur forest disease							
	Q fever							
	Rabies							
	Coccidioidomycosis							
	Monkeypox							
	Hemorrhagic fever with renal syndrome							
	Western equine encephalitis							
	Tick-borne encephalitis							
	Anthrax							
	Chikungunya fever							
	Scrub typhus(Tsutsugamushi disease)					1		58
	Dengue fever		1		1	7	3	24
	Eastern equine encephalitis							
	Avian influenza (excluding H5N1)							
	Nipah virus infection							
	Japanese spotted fever							
	Japanese encephalitis							
	Hantavirus pulmonary syndrome							
	Herpes B virus infection							
	Glanders							
	Brucellosis							
	Venezuelan equine encephalitis							
	Hendra virus infection							
Epidemic typhus								
Botulism								
Malaria						1	5	
Tularemia								
Lyme disease								
Lyssavirus infection(excluding rabies)								
Rift valley fever								
Melioidosis								
Legionellosis	1		1	1	8	12	116	
Leptospirosis						1	1	
Rocky mountain spotted fever								

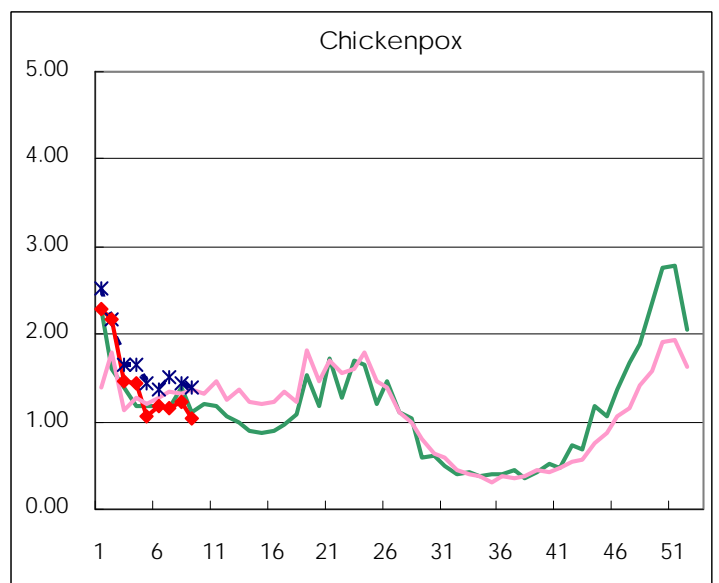
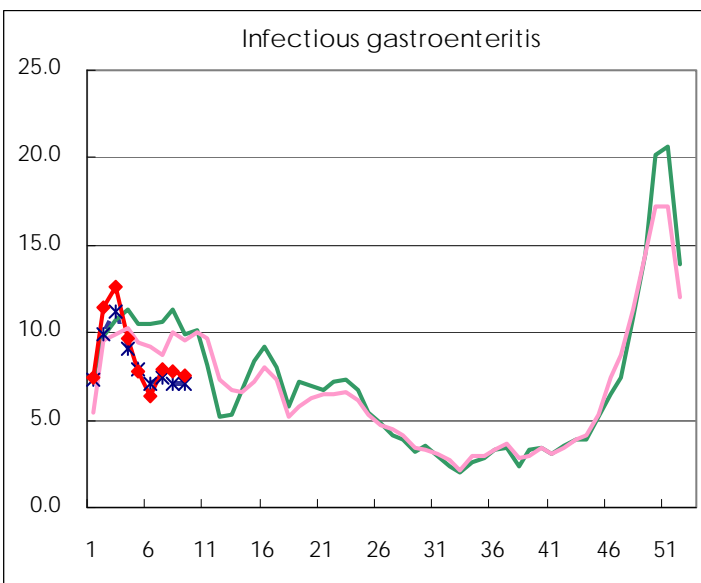
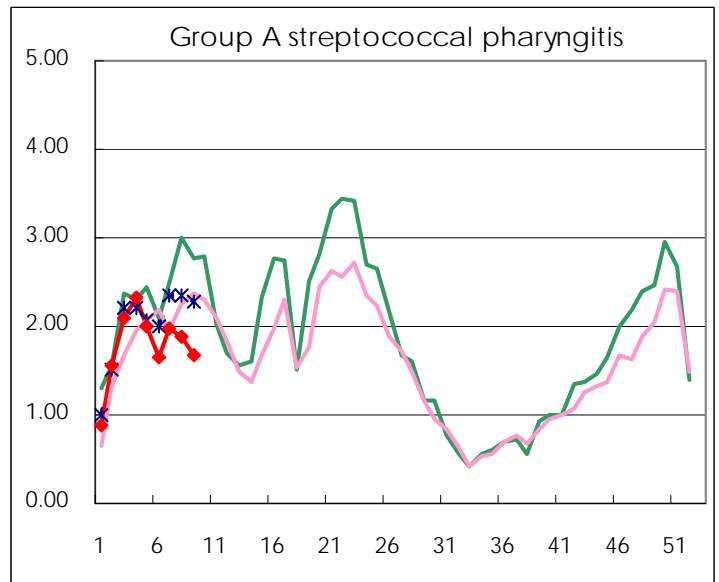
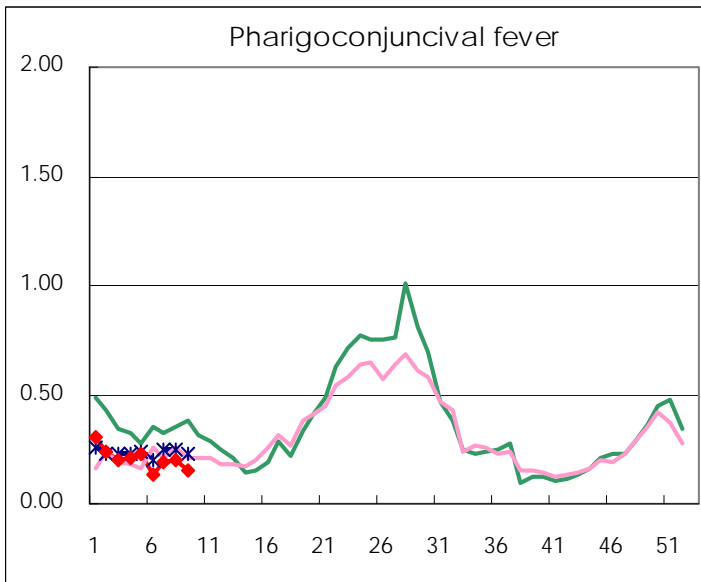
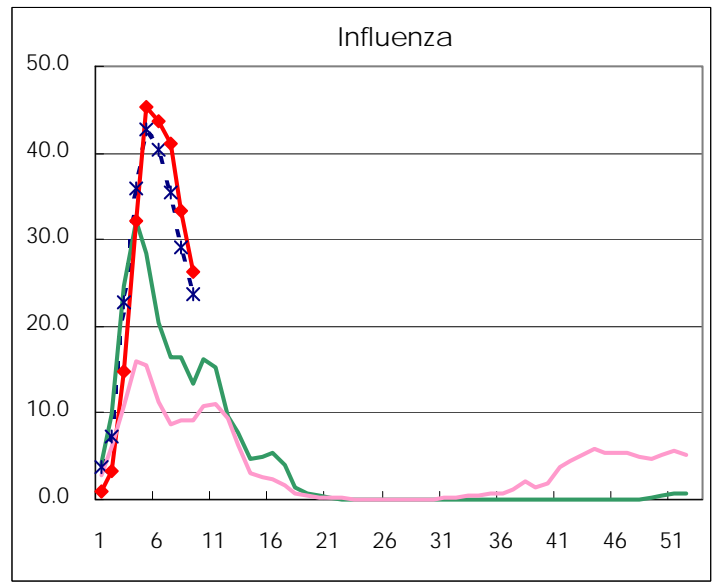
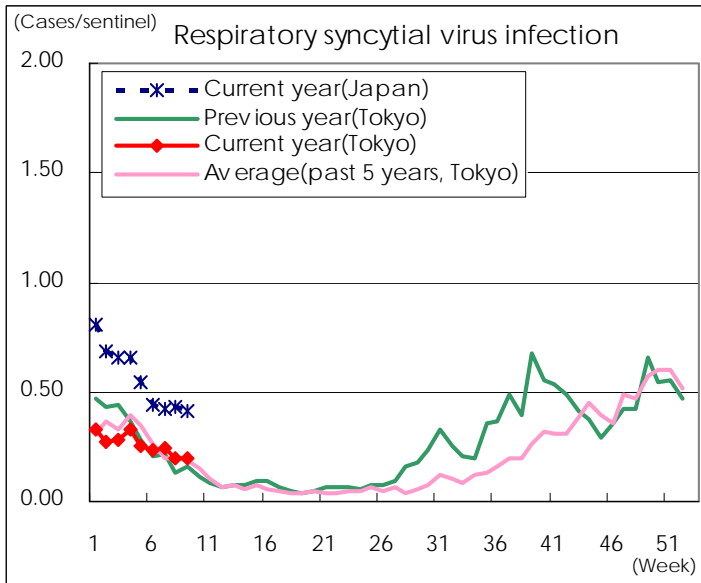
Category	Diseases	Tokyo				Japan		
		6th	7th	8th	9th	Cum 2012	9th	Cum 2012
V	Amebiasis	5	5	5	2	32	12	143
	Viral hepatitis(excluding hepatitis A and E)	1		2		8	1	28
	Acute encephalitis(excluding JE and WNE)		1	1	5	13	10	111
	Cryptosporidiosis					1		4
	Creutzfeldt-Jakob disease					1		30
	Severe invasive streptococcal infections(TSLS)		2		1	4	1	56
	Acquired immunodeficiency syndrome (AIDS)	8	11	7	6	77	15	212
	Giardiasis		1	1		2		4
	Meningococcal meningitis							3
	Congenital rubella syndrome							
	Syphilis	8	6	6	7	52	12	139
	Tetanus							14
	Vancomycin-resistant S. aureus infection							
	Vancomycin-resistant Enterococcus infection					3	1	12
	Rubella	1	1	2	1	12	5	48
	Measles	2	2	1	1	11	5	68

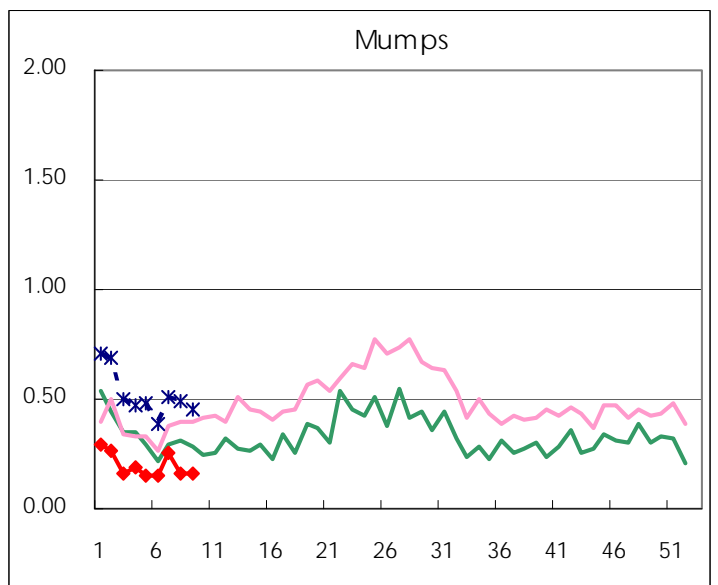
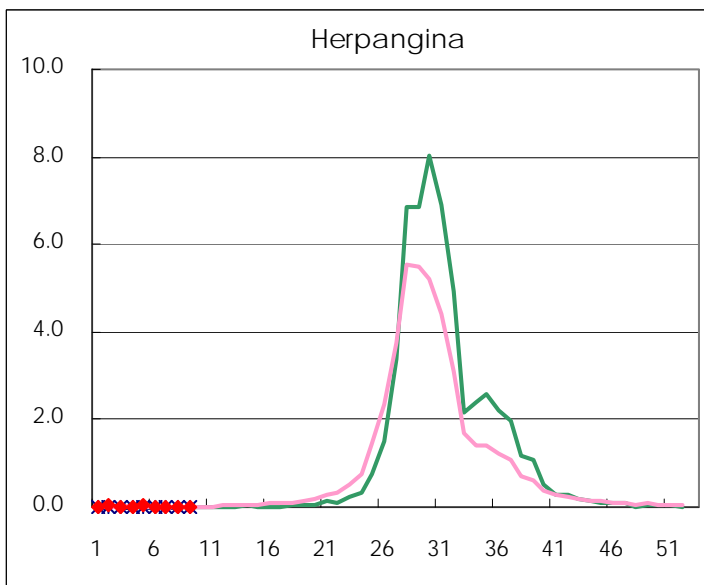
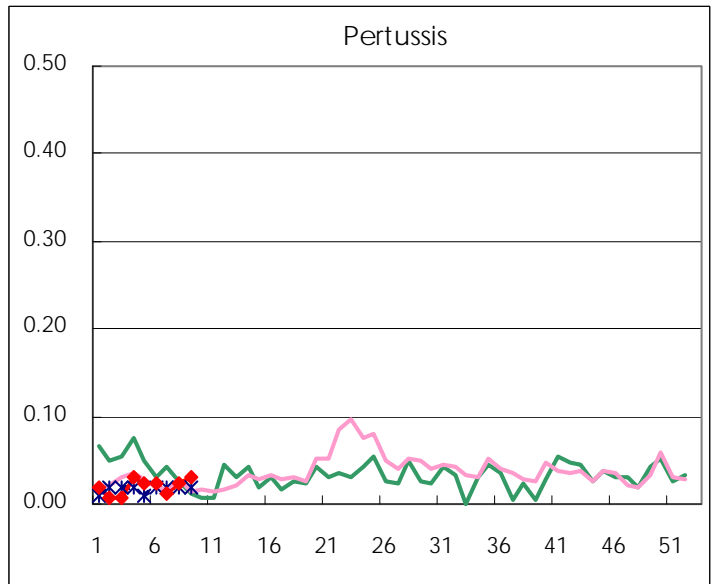
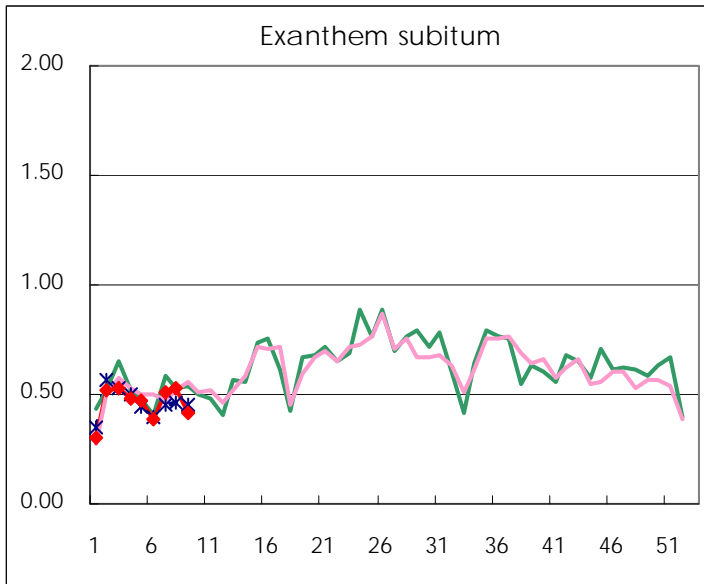
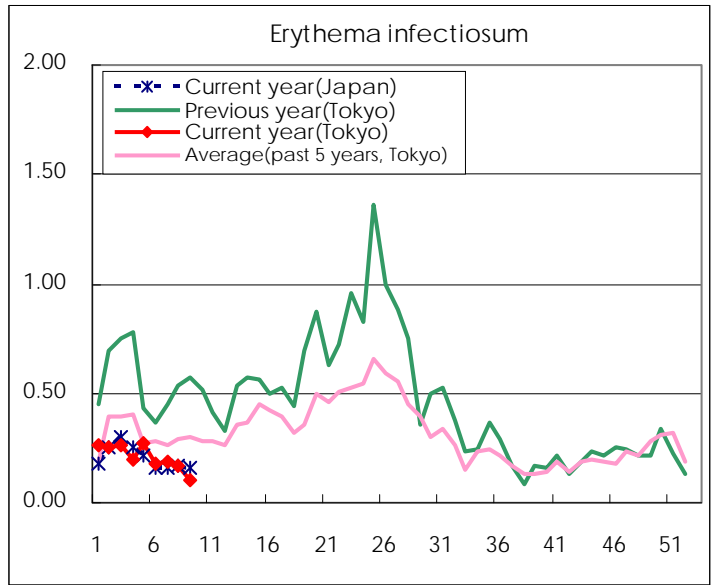
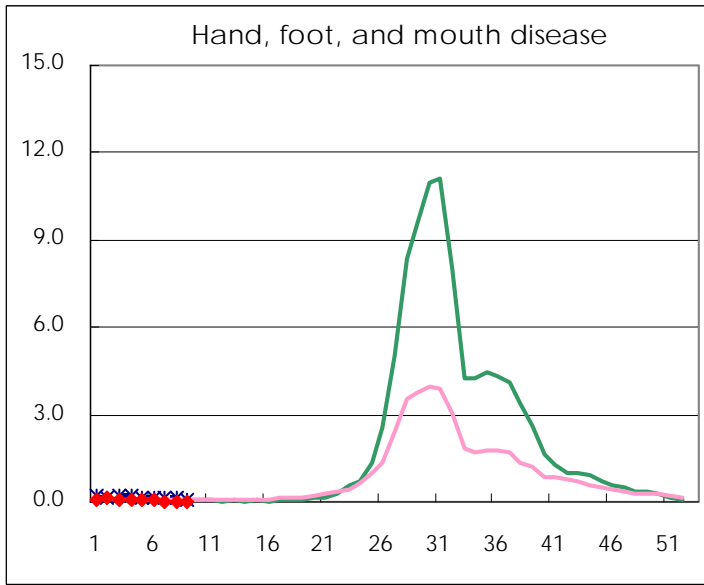
Number of patients with the diseases to be reported
by the designated clinics and hospitals

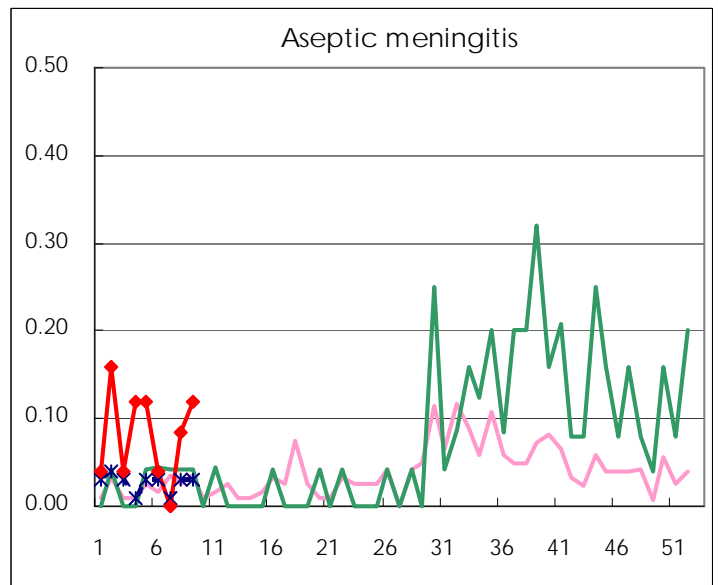
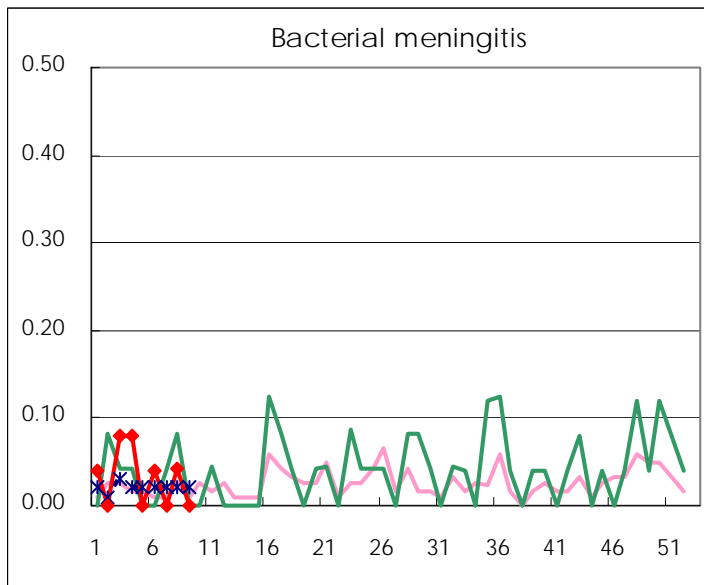
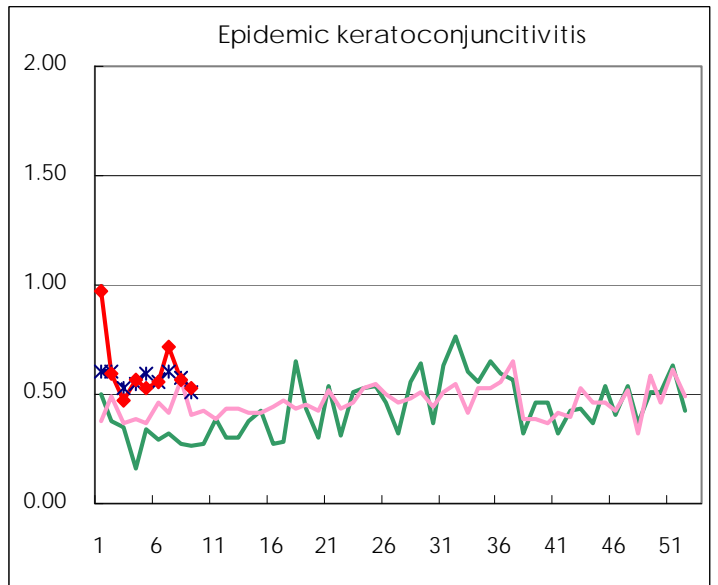
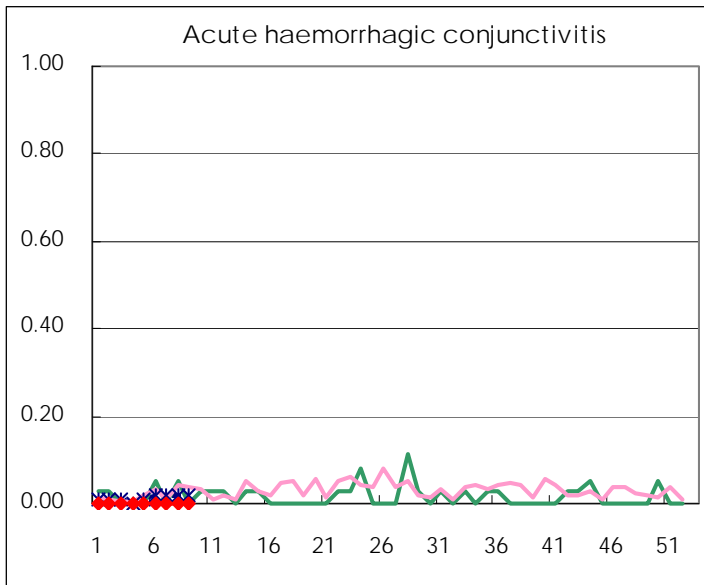
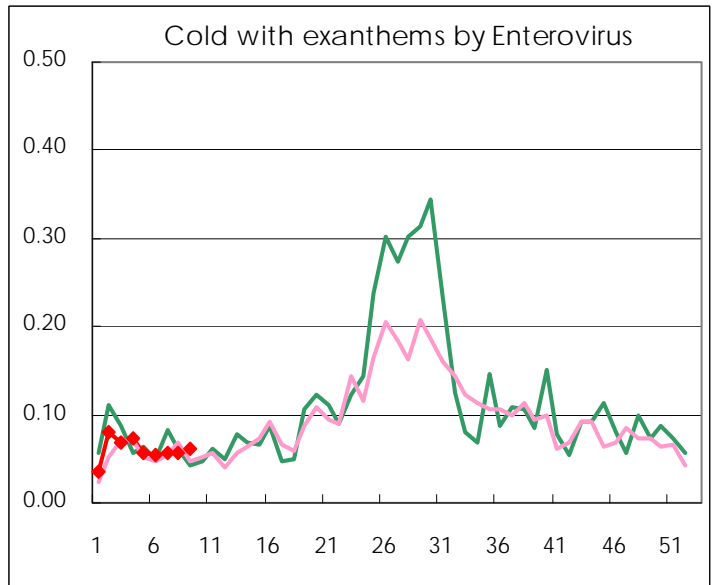
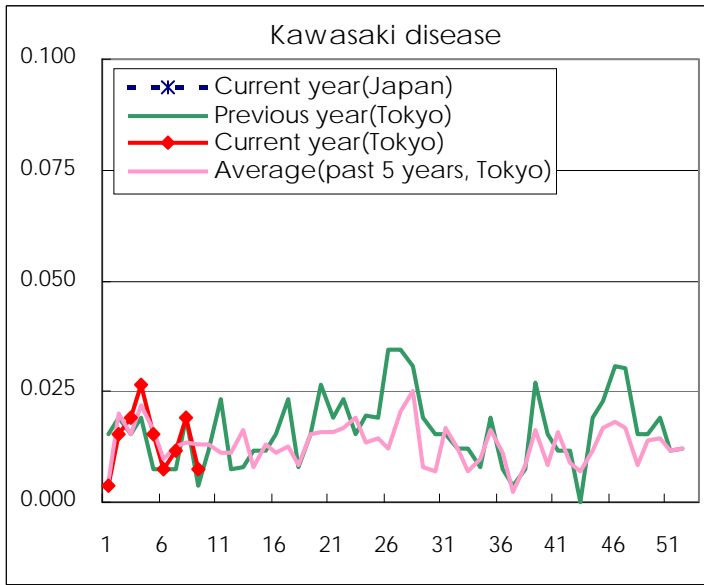
Diseases	Tokyo				
	6th	7th	8th	9th	/sentinel
Respiratory syncytial virus infection	62	63	51	52	0.20
Pharyngoconjunctival fever	34	50	52	40	0.15
Group A streptococcal pharyngitis	432	522	498	441	1.68
Infectious gastroenteritis	1679	2,089	2,066	1,978	7.52
Chickenpox	309	301	324	274	1.04
Hand, foot, and mouth disease	13	9	5	2	0.01
Erythema infectiosum	46	50	44	27	0.10
Exanthem subitum	101	133	140	110	0.42
Pertussis	6	3	6	8	0.03
Herpangina	5	1	5	6	0.02
Mumps	39	66	43	42	0.16
Kawasaki disease	2	3	5	2	0.01
Cold with exanthems by Enterovirus	14	15	15	16	0.06
Influenza	18,224	17,200	13,963	11,016	26.35
Acute hemorrhagic conjunctivitis					
Epidemic keratoconjunctivitis	21	28	22	20	0.53
Bacterial meningitis	1		1		
Aseptic meningitis	1		2	3	0.12
Mycoplasma pneumonia	17	17	23	20	0.80
Chlamydial pneumonia (excluding psittacosis)		1			
Influenza-Associated Hospitalizations	89	64	68	53	2.12

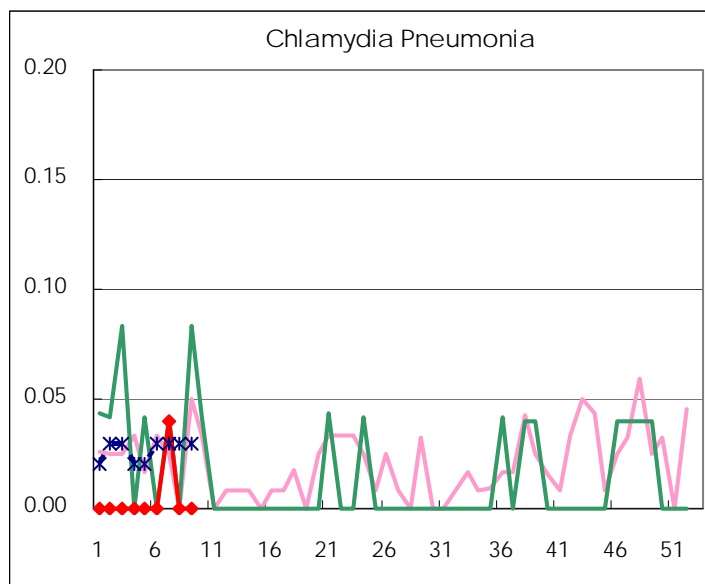
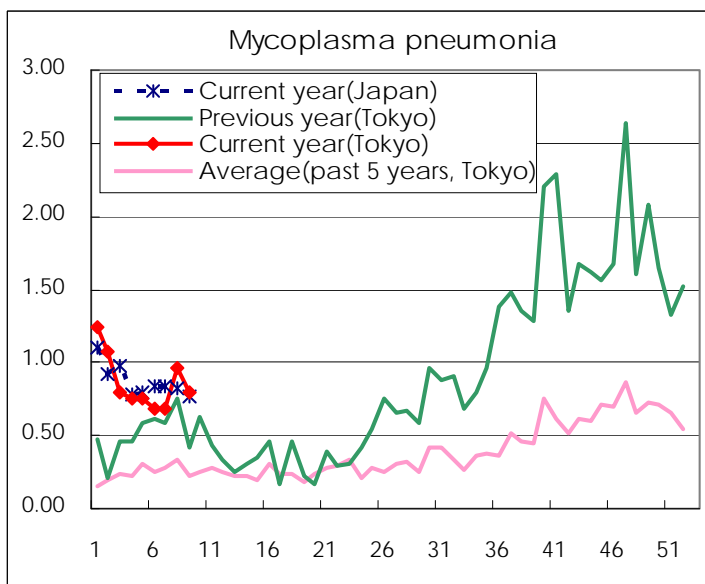
(Blank means 0.)

Disease Trend Graph (weekly reported cases per sentinel in comparison)









Number of sentinel facilities for weekly reporting		
Types of sentinels	Number of sentinels	Sentinels having reported
Pediatric	264	263
Influenza	419	418
Ophthalmic	39	38
Specially-designated	25	25

Tokyo Metropolitan Government
Infectious Disease Surveillance Center