
INFECTIOUS DISEASES WEEKLY REPORT

TOKYO IDWR

Tokyo Metropolitan Infectious Disease Surveillance Center

22 March 2012 / Number 11

Surveillance System in Tokyo, Japan

The infectious diseases which all physicians must report

All physicians must report to health centers the incidence of the diseases which are shown at page one. Health centers electronically report the individual cases to Tokyo Metropolitan Infectious Disease Surveillance Center.

The infectious diseases required to be reported by the sentinels

The numbers of patients who visit the sentinel clinics or hospitals during a week are reported to health centers in Tokyo. And they electronically report the numbers to Tokyo Metropolitan Infectious Disease Surveillance Center. We have about 500 sentinel clinics and hospitals in Tokyo.

1st Week is early January and 52nd Week is end of December.

Tokyo Metropolitan Institute of Public Health
Epidemiological Information Office

TEL:81-3-3363-3213 FAX:81-3-5332-7365

e-mail:idsc@tokyo-eiken.go.jp

URL:idsc.tokyo-eiken.go.jp/

Number of patients with the diseases which all physicians must report

Category	Diseases	Tokyo				Japan		
		8th	9th	10th	11st	Cum 2012	11st	Cum 2012
I	Ebola hemorrhagic fever							
	Crimean-Congo hemorrhagic fever							
	Smallpox							
	South American hemorrhagic fever							
	Plague							
	Marburg disease							
	Lassa fever							
II	Acute poliomyelitis							
	Tuberculosis	86	69	58	64	830	374	5,404
	Diphtheria							
	Severe Acute Respiratory Syndrome(SARS)							
	Avian influenza H5N1							
III	Cholera							1
	Shigellosis	1	4	2	5	19	10	58
	Enterohemorrhagic Escherichia coli infection	2	2			7	9	110
	Typhoid fever					3	1	5
	Paratyphoid fever					2		4
IV	Hepatitis E					5		32
	West Nile fever							
	Hepatitis A				2	3	3	26
	Echinococcosis							2
	Yellow fever							
	Psittacosis							1
	Omsk hemorrhagic fever							
	Relapsing fever							
	Kyasanur forest disease							
	Q fever							
	Rabies							
	Coccidioidomycosis							
	Monkeypox							
	Hemorrhagic fever with renal syndrome							
	Western equine encephalitis							
	Tick-borne encephalitis							
	Anthrax							
	Chikungunya fever							
	Scrub typhus(Tsutsugamushi disease)					1	2	60
	Dengue fever		1		3	10	4	34
	Eastern equine encephalitis							
	Avian influenza (excluding H5N1)							
	Nipah virus infection							
	Japanese spotted fever							
	Japanese encephalitis							
	Hantavirus pulmonary syndrome							
	Herpes B virus infection							
	Glanders							
	Brucellosis							
	Venezuelan equine encephalitis							
	Hendra virus infection							
	Epidemic typhus							
Botulism								
Malaria				1	2	2	8	
Tularemia								
Lyme disease								
Lyssavirus infection(excluding rabies)								
Rift valley fever								
Melioidosis								
Legionellosis	1	1	1	2	11	8	135	
Leptospirosis					1		1	
Rocky mountain spotted fever								

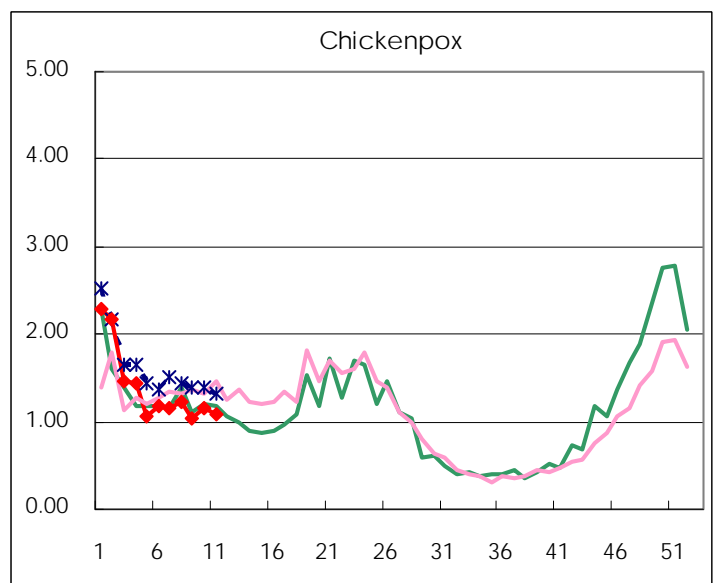
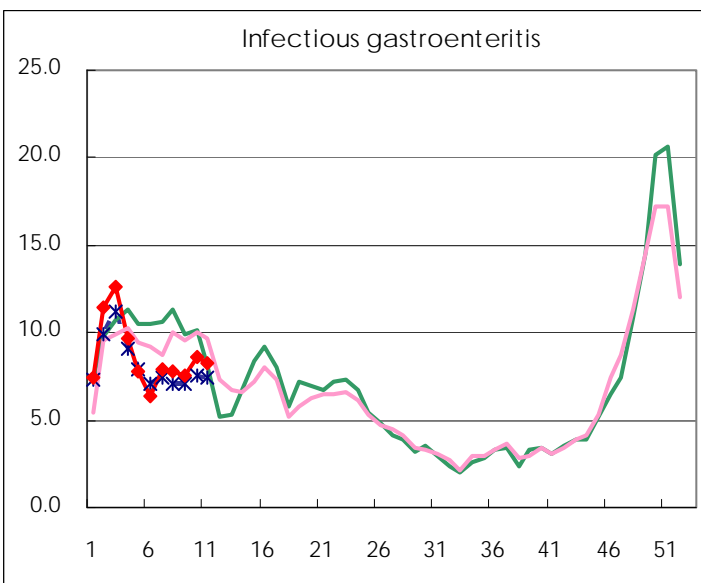
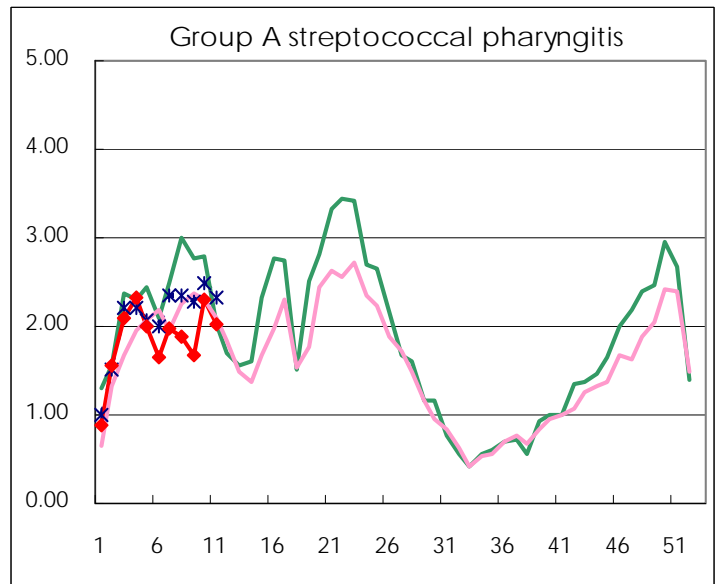
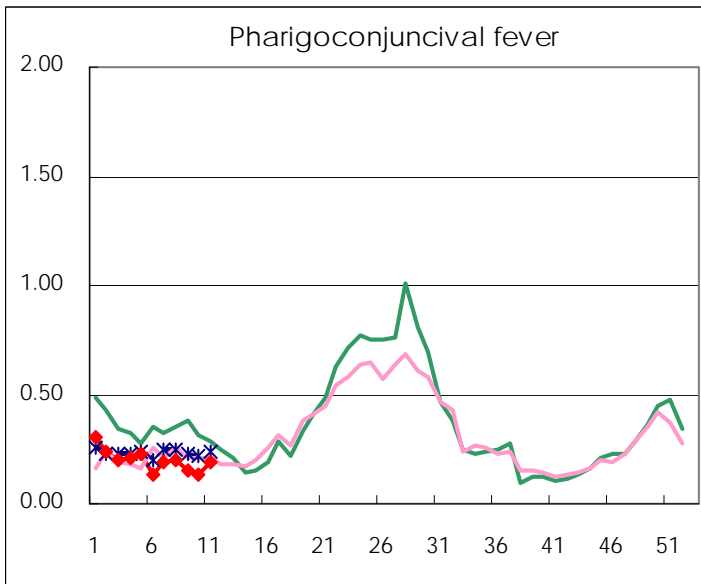
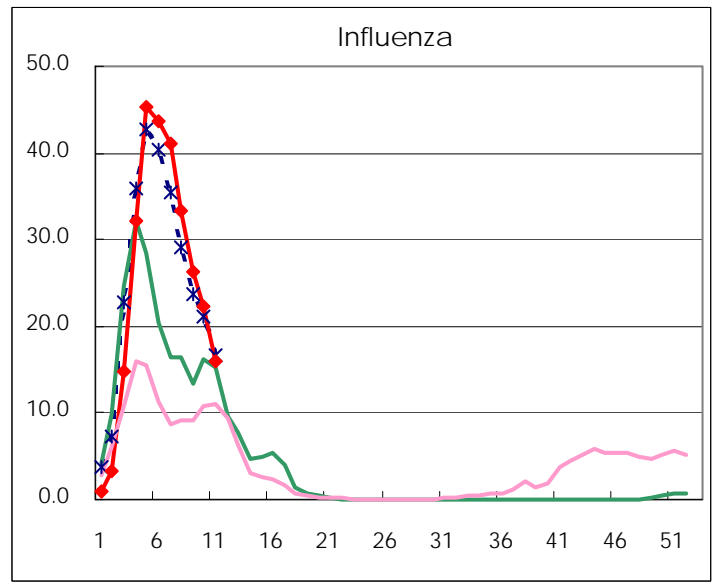
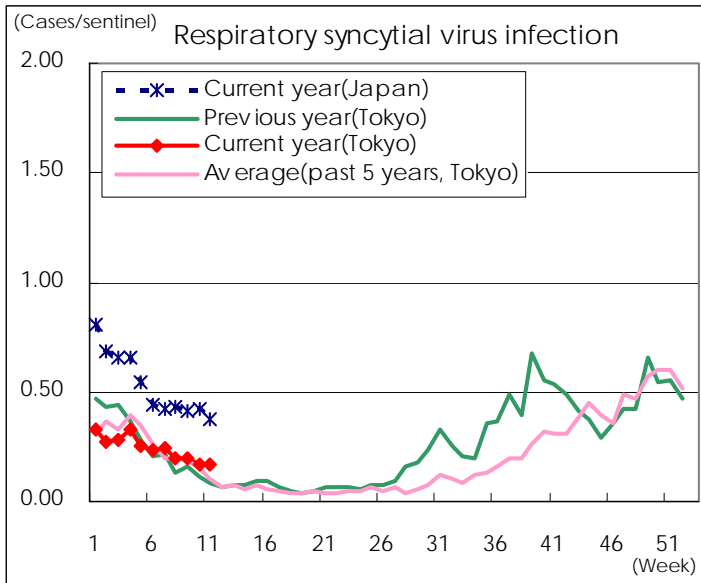
Category	Diseases	Tokyo				Japan		
		8th	9th	10th	11st	Cum 2012	11st	Cum 2012
V	Amebiasis	5	2	4	3	39	7	176
	Viral hepatitis(excluding hepatitis A and E)	2		1	1	10	4	38
	Acute encephalitis(excluding JE and WNE)	1	5			13	4	132
	Cryptosporidiosis					1		4
	Creutzfeldt-Jakob disease				2	3	4	38
	Severe invasive streptococcal infections(TSLS)		1			4	5	71
	Acquired immunodeficiency syndrome (AIDS)	7	6	8	5	90	7	268
	Giardiasis	1			1	3	1	6
	Meningococcal meningitis							4
	Congenital rubella syndrome							
	Syphilis	6	7	3	3	58	4	163
	Tetanus						1	16
	Vancomycin-resistant S. aureus infection							
	Vancomycin-resistant Enterococcus infection				1	4	2	19
	Rubella	2	1	3		15	8	84
	Measles	1	1	1		12	5	76

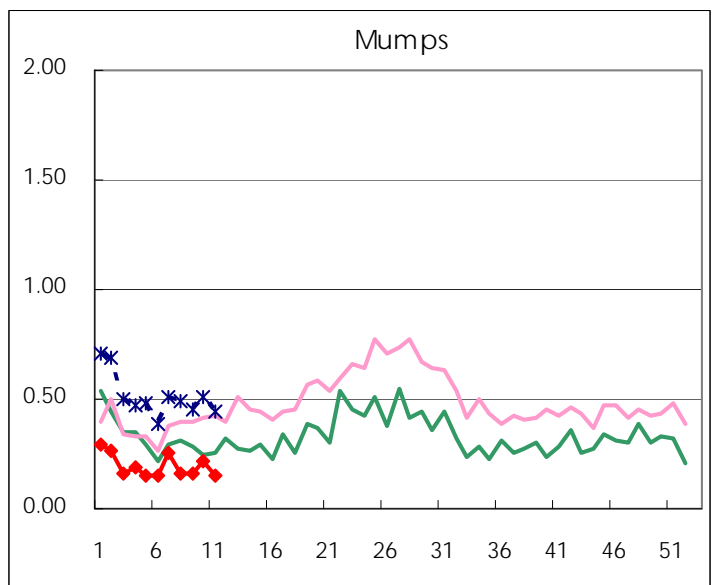
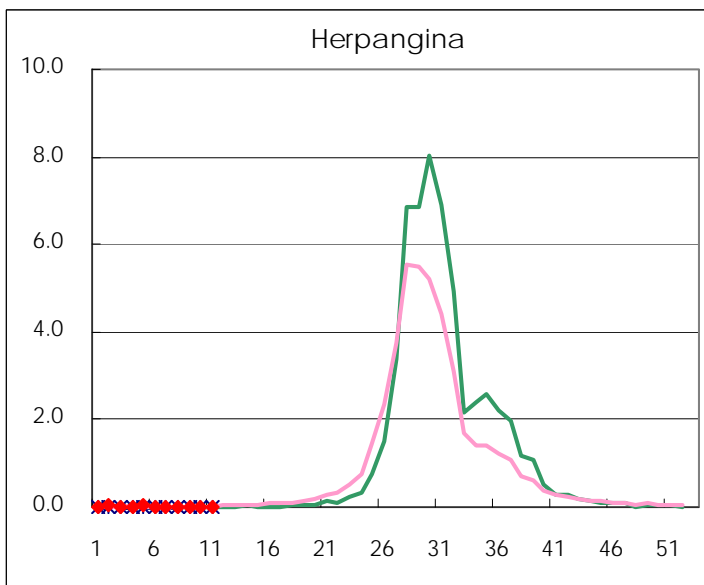
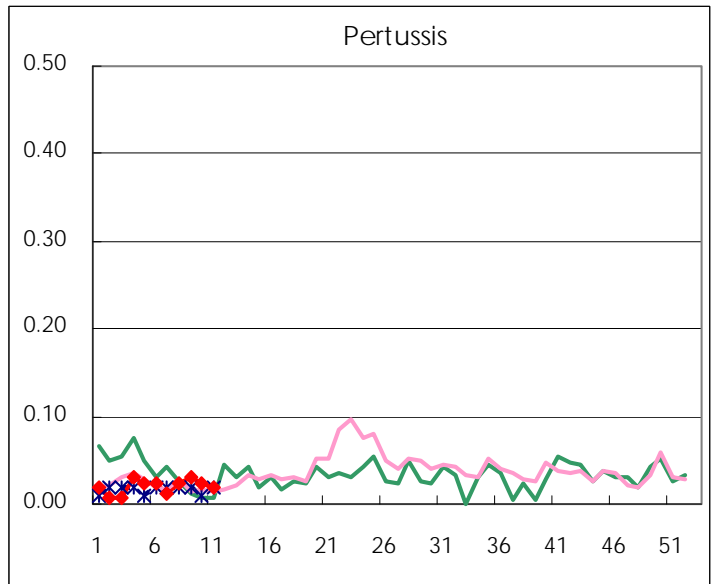
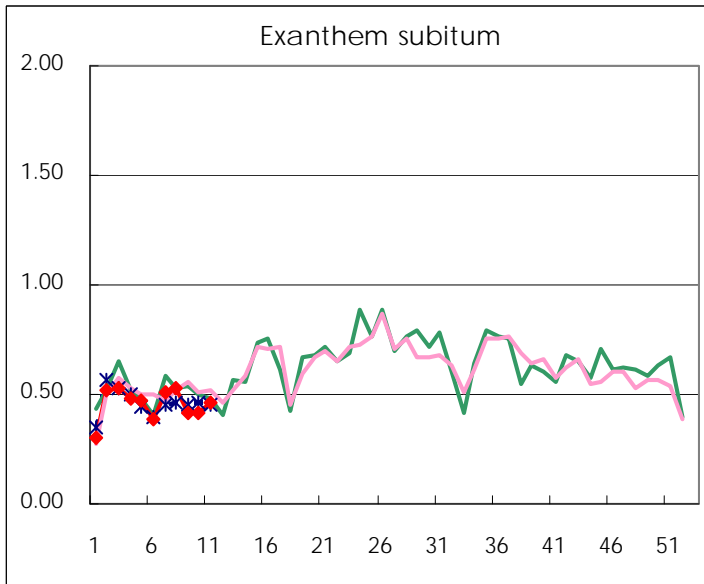
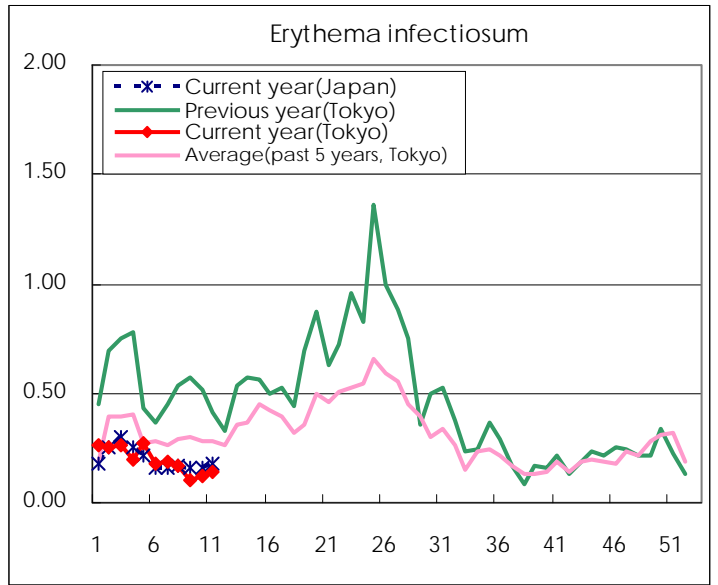
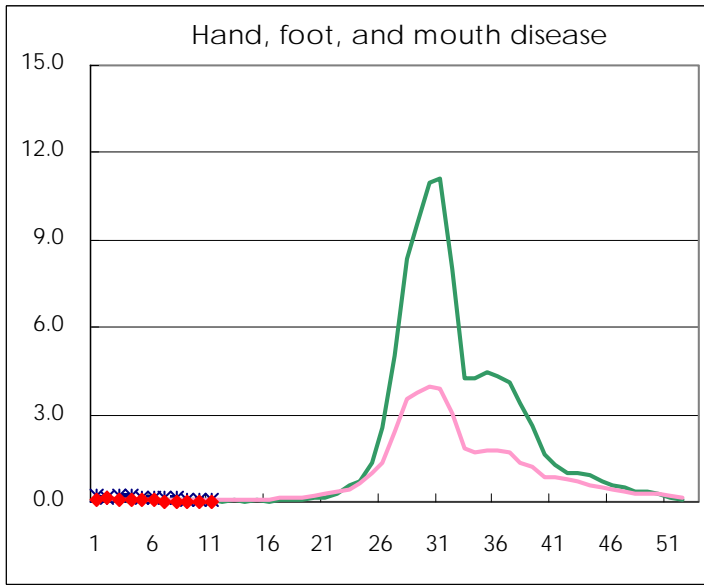
Number of patients with the diseases to be reported
by the designated clinics and hospitals

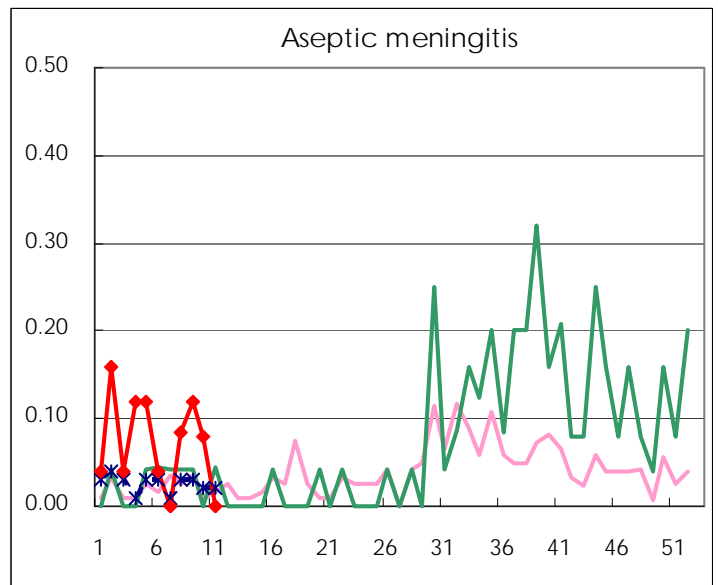
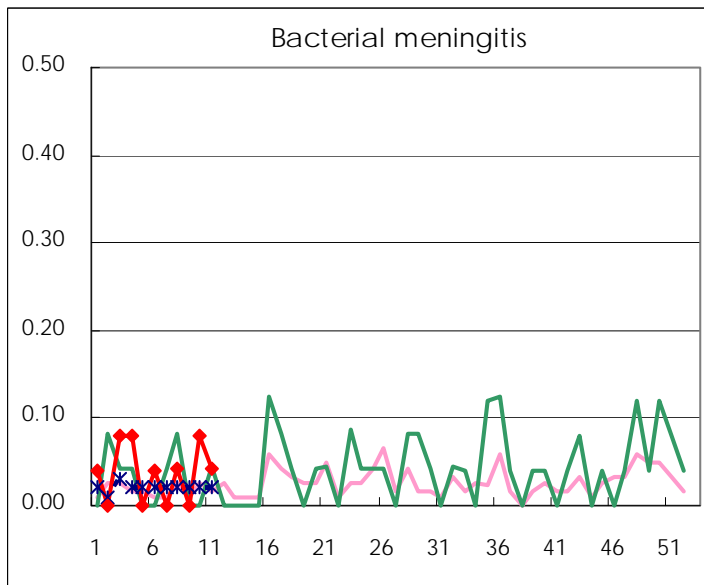
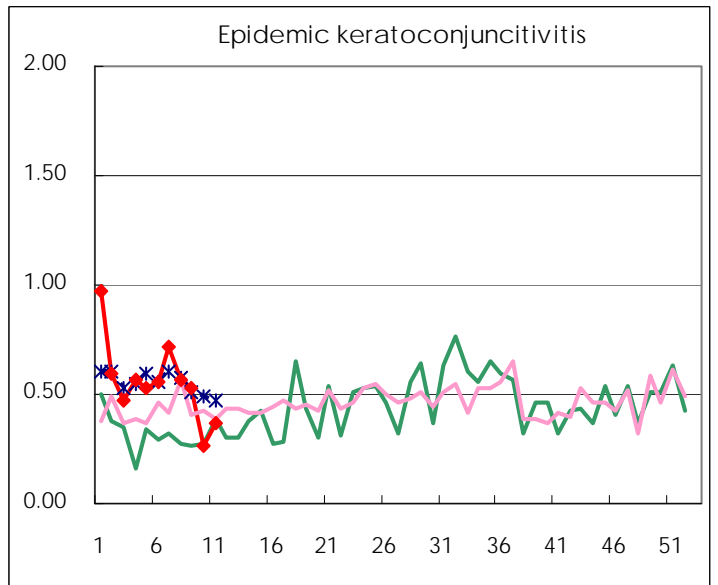
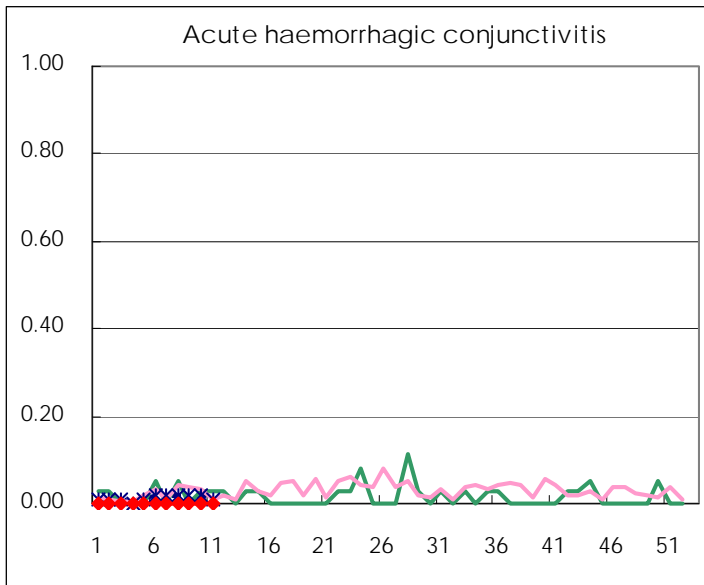
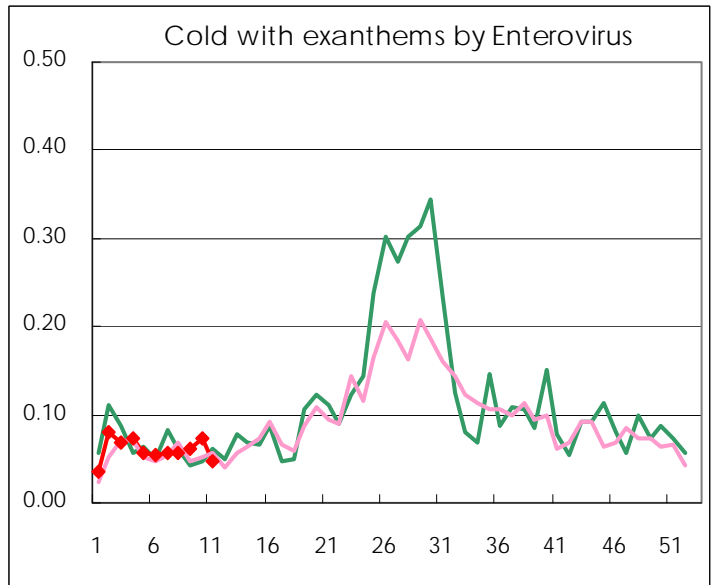
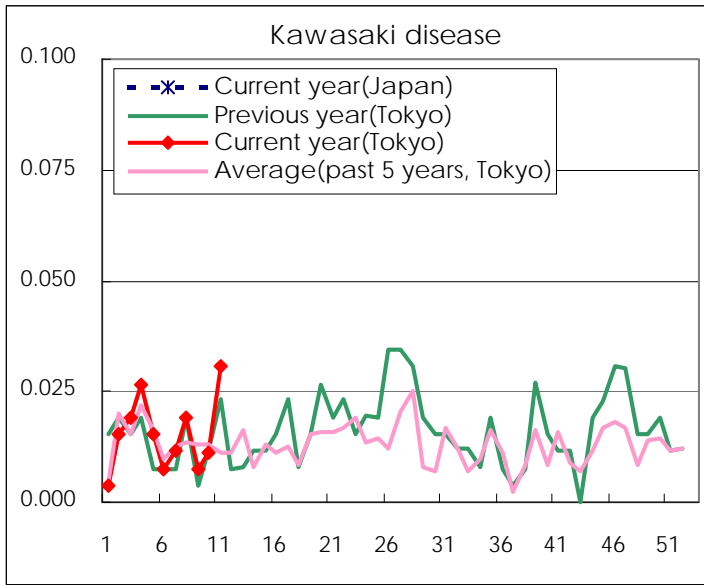
Diseases	Tokyo				
	8th	9th	10th	11st	/sentinel
Respiratory syncytial virus infection	51	52	45	45	0.17
Pharyngoconjunctival fever	52	40	36	49	0.19
Group A streptococcal pharyngitis	498	441	609	525	2.02
Infectious gastroenteritis	2066	1,978	2,287	2,146	8.25
Chickenpox	324	274	303	280	1.08
Hand, foot, and mouth disease	5	2	2	2	0.01
Erythema infectiosum	44	27	31	36	0.14
Exanthem subitum	140	110	109	120	0.46
Pertussis	6	8	6	5	0.02
Herpangina	5	6	3	2	0.01
Mumps	43	42	57	40	0.15
Kawasaki disease	5	2	3	8	0.03
Cold with exanthems by Enterovirus	15	16	19	12	0.05
Influenza	13,963	11,006	9,327	6,633	16.02
Acute hemorrhagic conjunctivitis					
Epidemic keratoconjunctivitis	22	20	10	14	0.37
Bacterial meningitis	1		2	1	0.04
Aseptic meningitis	2	3	2		
Mycoplasma pneumonia	23	25	21	14	0.58
Chlamydial pneumonia (excluding psittacosis)					
Influenza-Associated Hospitalizations	68	53	26	18	0.75

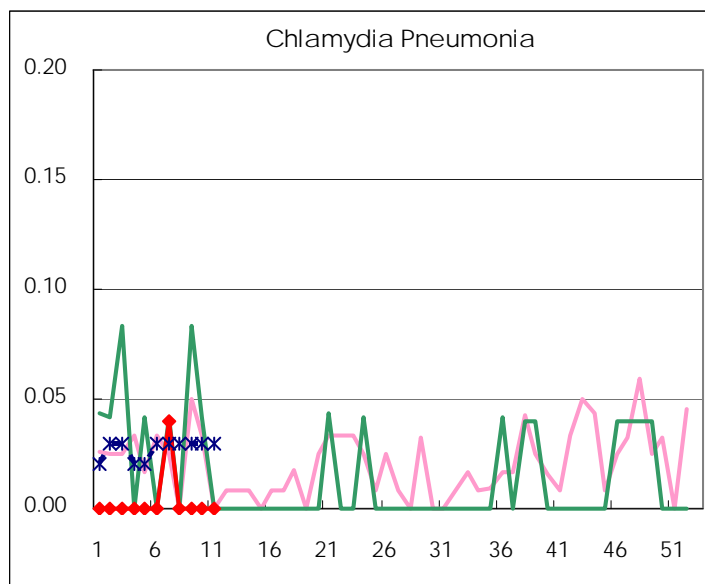
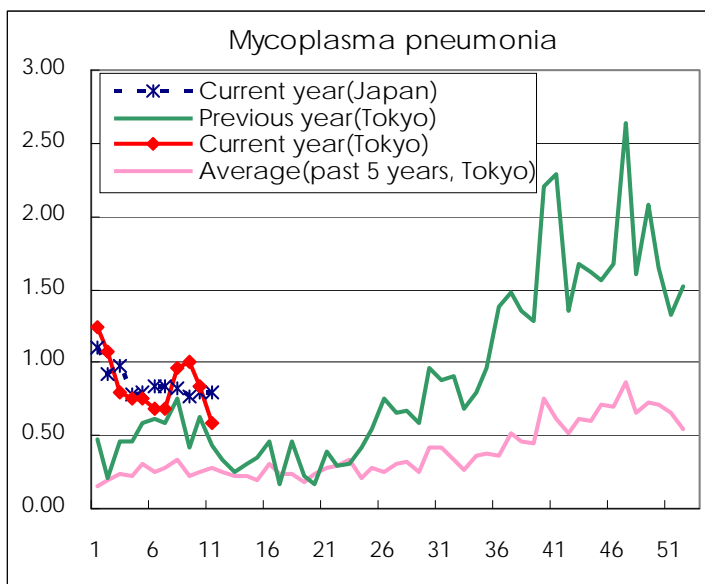
(Blank means 0.)

Disease Trend Graph (weekly reported cases per sentinel in comparison)









Number of sentinel facilities for weekly reporting		
Types of sentinels	Number of sentinels	Sentinels having reported
Pediatric	264	260
Influenza	419	414
Ophthalmic	39	38
Specially-designated	25	24

Tokyo Metropolitan Government
Infectious Disease Surveillance Center