

---

INFECTIOUS DISEASES WEEKLY REPORT

# TOKYO IDWR

Tokyo Metropolitan Infectious Disease Surveillance Center

---

## 12 April 2012 / Number 14

### Surveillance System in Tokyo, Japan

The infectious diseases which all physicians must report

All physicians must report to health centers the incidence of the diseases which are shown at page one. Health centers electronically report the individual cases to Tokyo Metropolitan Infectious Disease Surveillance Center.

The infectious diseases required to be reported by the sentinels

The numbers of patients who visit the sentinel clinics or hospitals during a week are reported to health centers in Tokyo. And they electronically report the numbers to Tokyo Metropolitan Infectious Disease Surveillance Center. We have about 500 sentinel clinics and hospitals in Tokyo.

1st Week is early January and 52nd Week is end of December.

Tokyo Metropolitan Institute of Public Health

TEL:81-3-3363-3213 FAX:81-3-5332-7365

e-mail:[idsc@tokyo-eiken.go.jp](mailto:idsc@tokyo-eiken.go.jp)

URL:[idsc.tokyo-eiken.go.jp/](http://idsc.tokyo-eiken.go.jp/)

---

## Number of patients with the diseases which all physicians must report

Category	Diseases	Tokyo				Cum 2012	Japan	
		11th	12th	13th	14th		14th	Cum 2012
I	Ebola hemorrhagic fever							
	Crimean-Congo hemorrhagic fever							
	Smallpox							
	South American hemorrhagic fever							
	Plague							
	Marburg disease							
	Lassa fever							
II	Acute poliomyelitis							
	Tuberculosis	101	56	85	47	1,080	272	7,021
	Diphtheria							
	Severe Acute Respiratory Syndrome(SARS)							
	Avian influenza H5N1							
III	Cholera							1
	Shigellosis	5	1	2		22	3	75
	Enterohemorrhagic Escherichia coli infection		1		2	10	28	187
	Typhoid fever			1		4	1	9
	Paratyphoid fever				1	3	1	5
IV	Hepatitis E		1		1	7	2	42
	West Nile fever							
	Hepatitis A	2	1	1		5	3	38
	Echinococcosis							3
	Yellow fever							
	Psittacosis							1
	Omsk hemorrhagic fever							
	Relapsing fever							
	Kyasanur forest disease							
	Q fever							
	Rabies							
	Coccidioidomycosis							1
	Monkeypox							
	Hemorrhagic fever with renal syndrome							
	Western equine encephalitis							
	Tick-borne encephalitis							
	Anthrax							
	Chikungunya fever							
	Scrub typhus(Tsutsugamushi disease)					1		61
	Dengue fever	3				10	3	41
	Eastern equine encephalitis							
	Avian influenza (excluding H5N1)							
	Nipah virus infection							
	Japanese spotted fever							
	Japanese encephalitis							
	Hantavirus pulmonary syndrome							
	Herpes B virus infection							
	Glanders							
	Brucellosis							
	Venezuelan equine encephalitis							
	Hendra virus infection							
	Epidemic typhus							
Botulism							2	
Malaria	1		2		4		12	
Tularemia								
Lyme disease								
Lyssavirus infection(excluding rabies)								
Rift valley fever								
Melioidosis								
Legionellosis	2			2	13	9	165	
Leptospirosis					1		1	
Rocky mountain spotted fever								

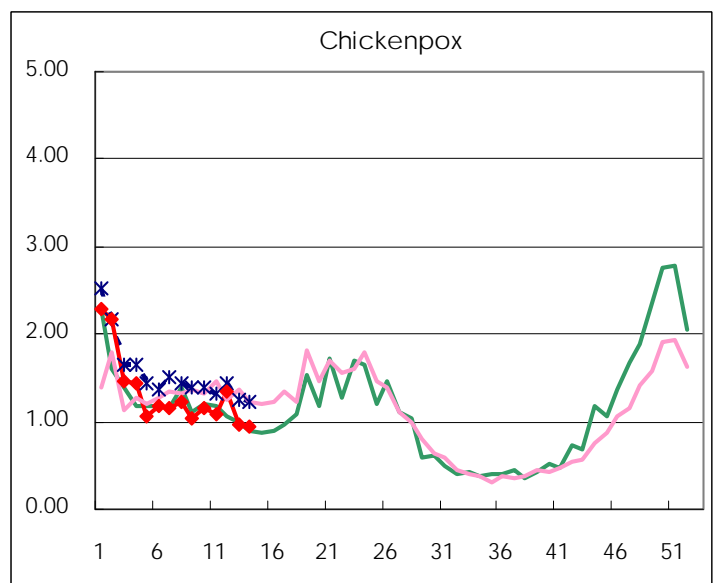
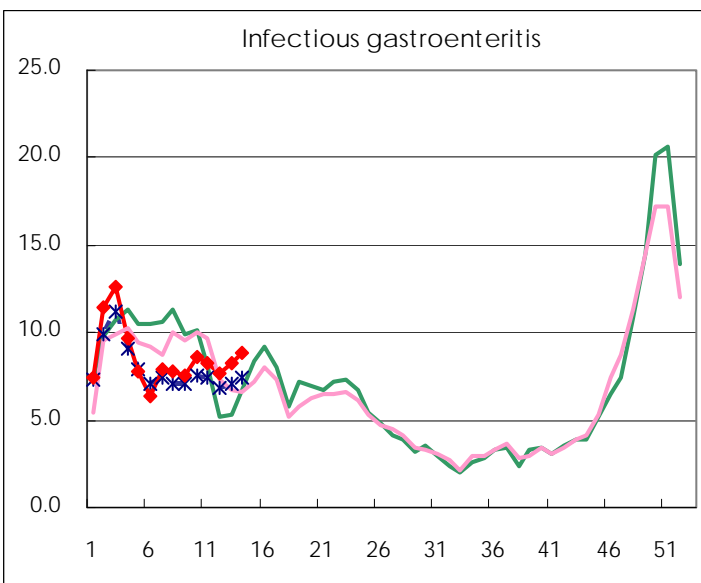
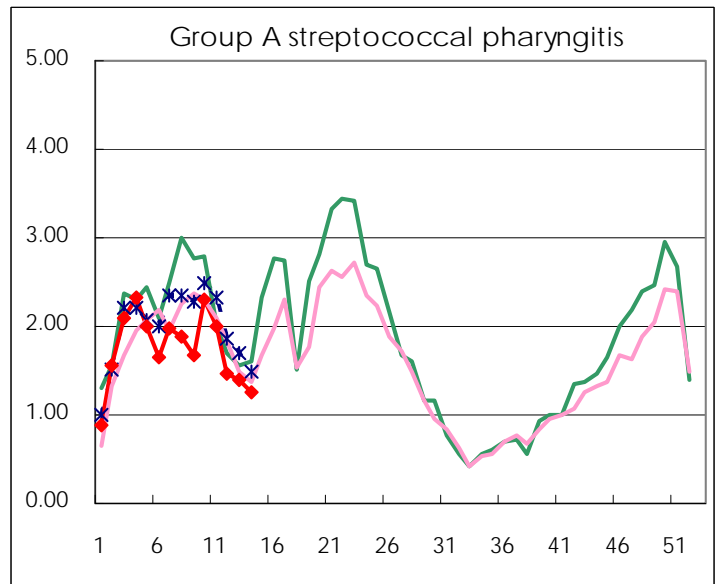
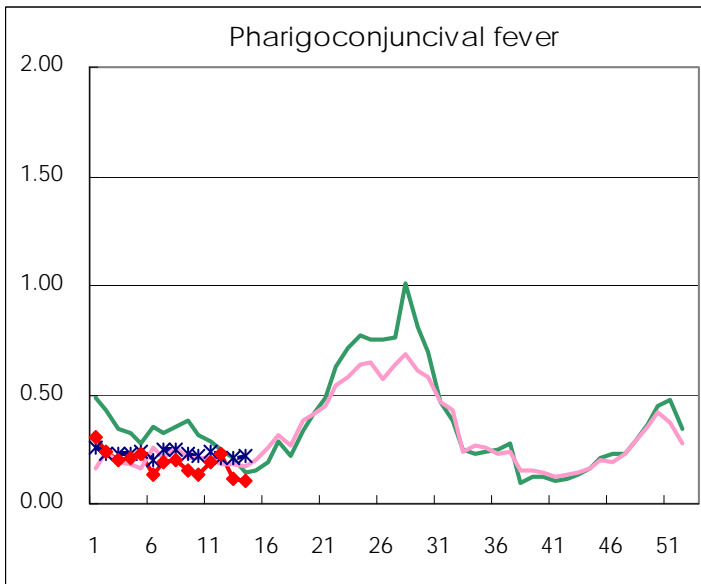
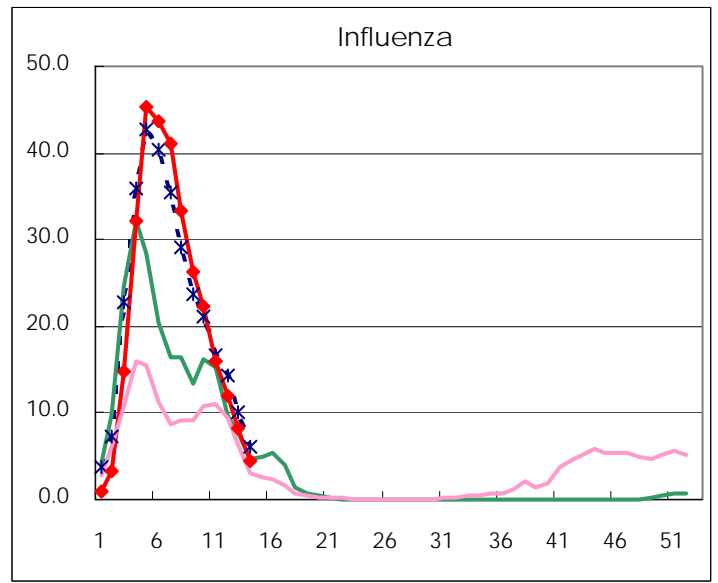
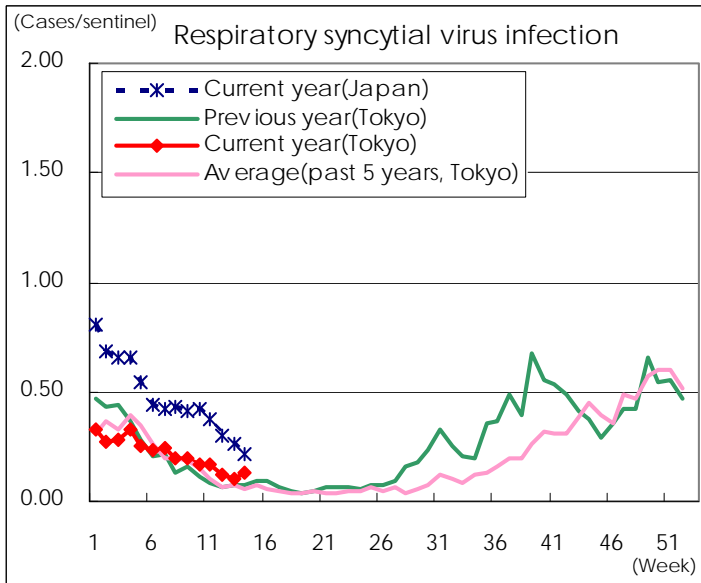
Category	Diseases	Tokyo				Japan		
		11th	12th	13th	14th	Cum 2012	14th	Cum 2012
V	Amebiasis	3	6	1	2	48	7	214
	Viral hepatitis(excluding hepatitis A and E)	1	2	1	1	14	1	47
	Acute encephalitis(excluding JE and WNE)				1	14	6	156
	Cryptosporidiosis					1		4
	Creutzfeldt-Jakob disease	2	1			4		46
	Severe invasive streptococcal infections(TSLS)		1	1	1	7	4	82
	Acquired immunodeficiency syndrome (AIDS)	5	8	8	6	112	13	338
	Giardiasis	1				3		10
	Meningococcal meningitis							4
	Congenital rubella syndrome							
	Syphilis	3	8		6	72	6	198
	Tetanus			1		1		18
	Vancomycin-resistant S. aureus infection							
	Vancomycin-resistant Enterococcus infection	1				4		22
	Rubella			2		17	6	114
	Measles		2	2	1	17	6	98

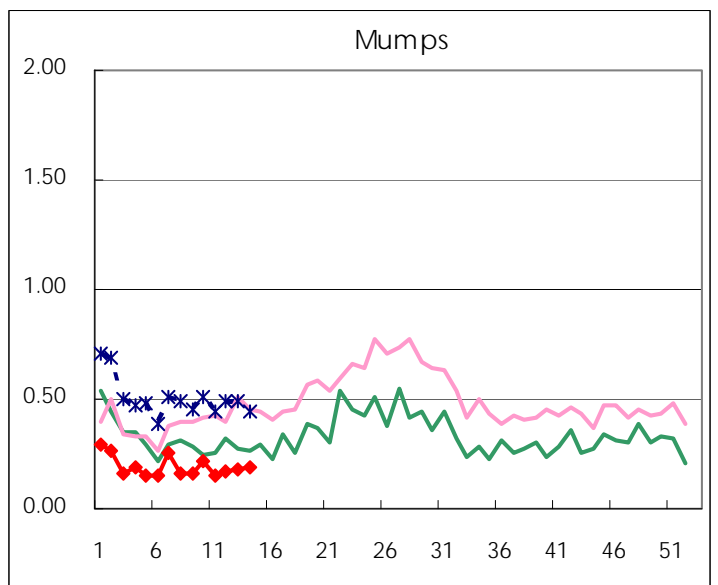
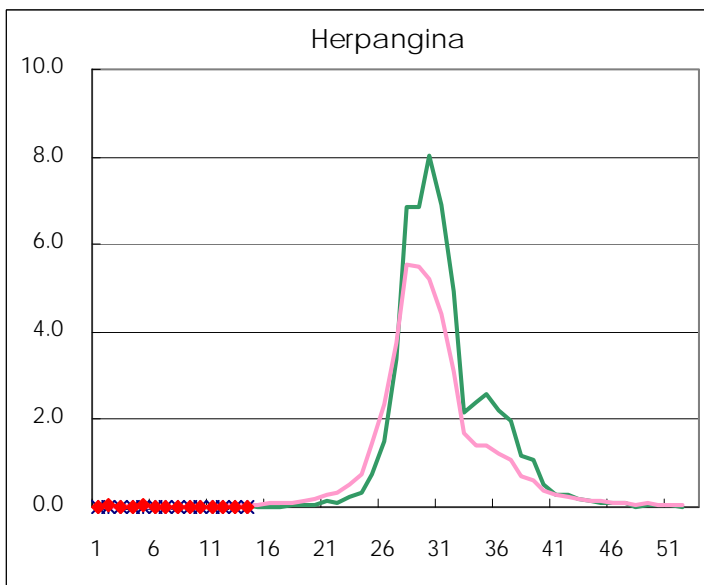
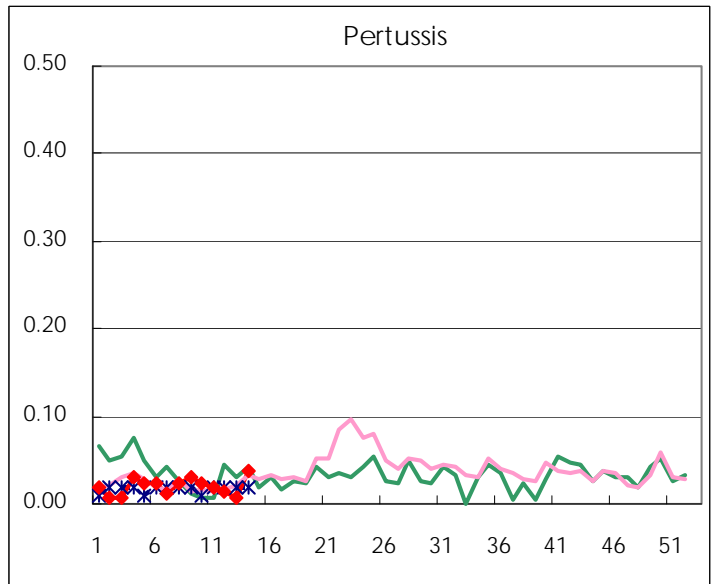
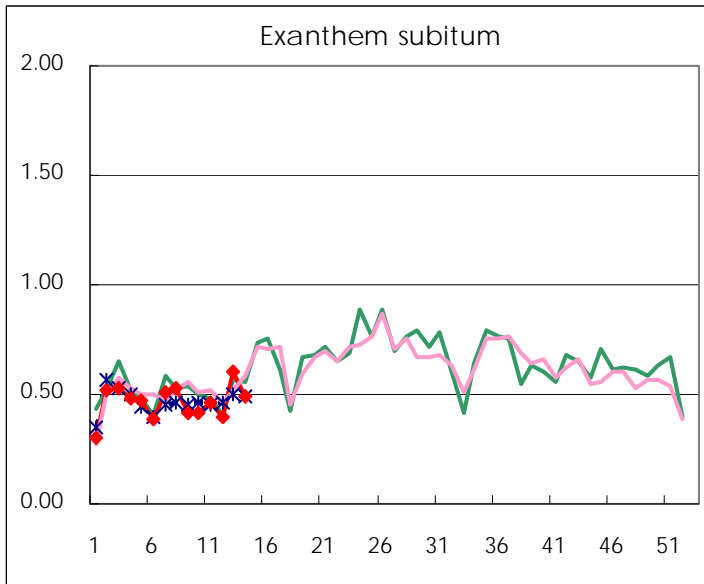
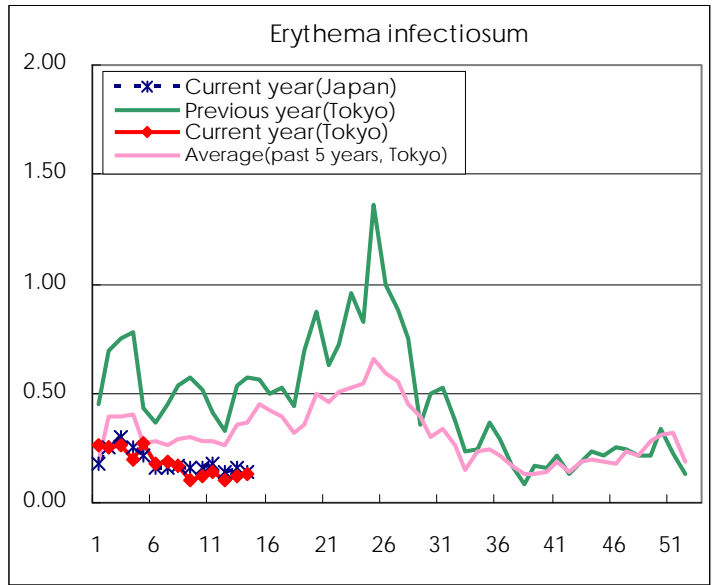
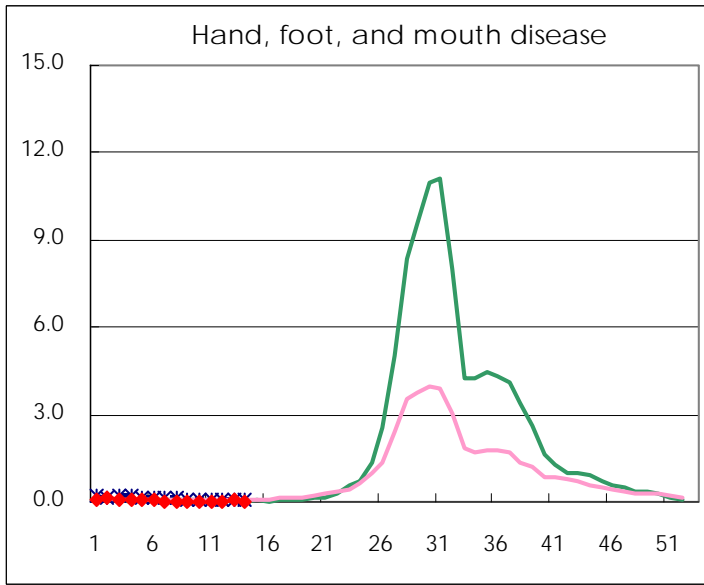
Number of patients with the diseases to be reported  
by the designated clinics and hospitals

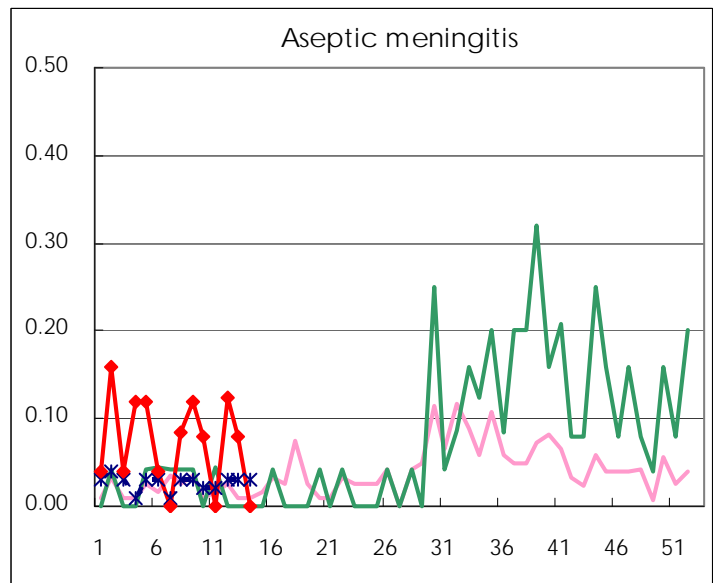
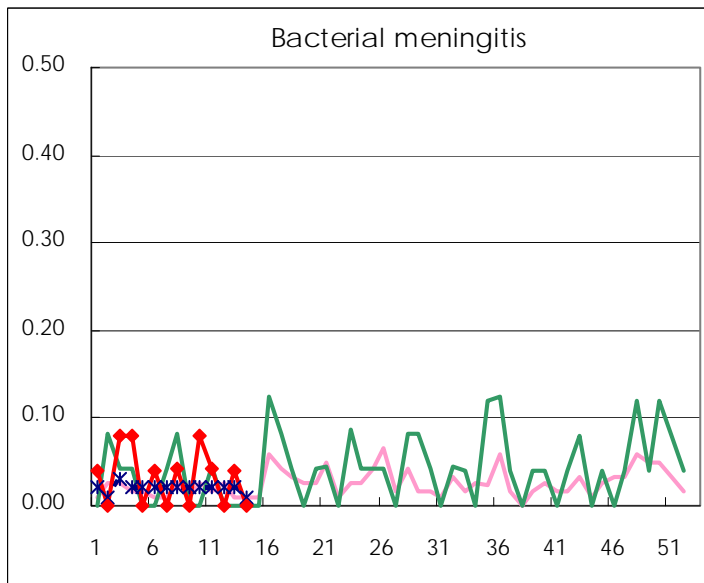
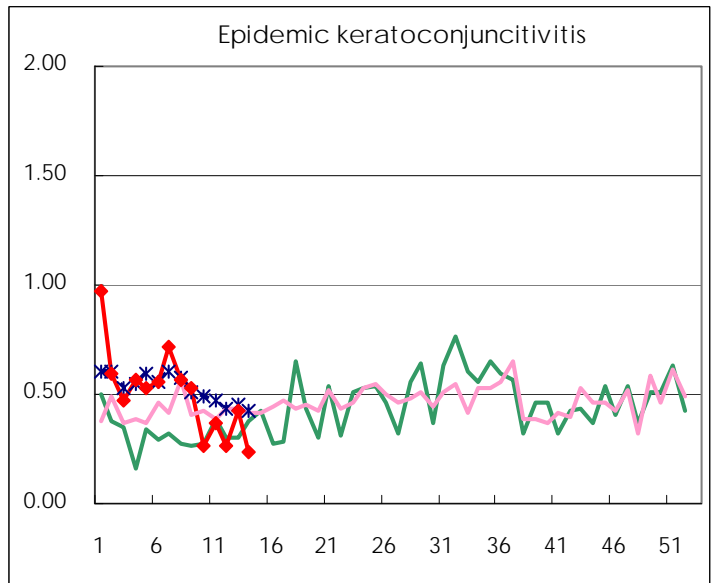
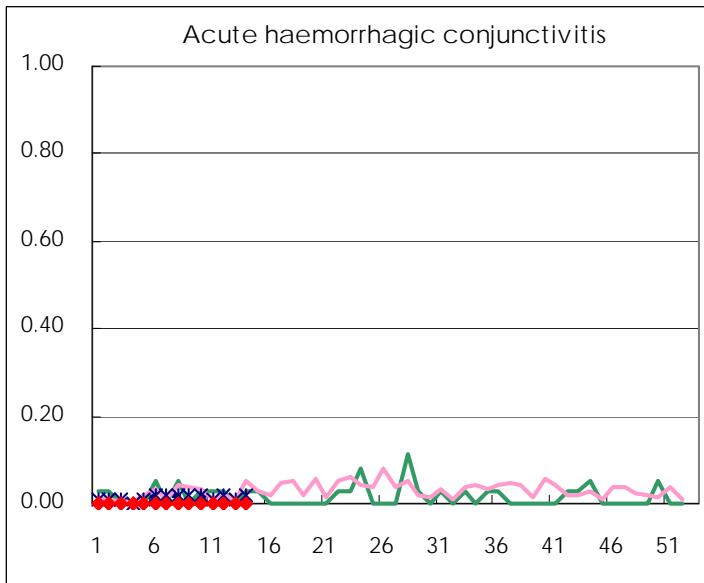
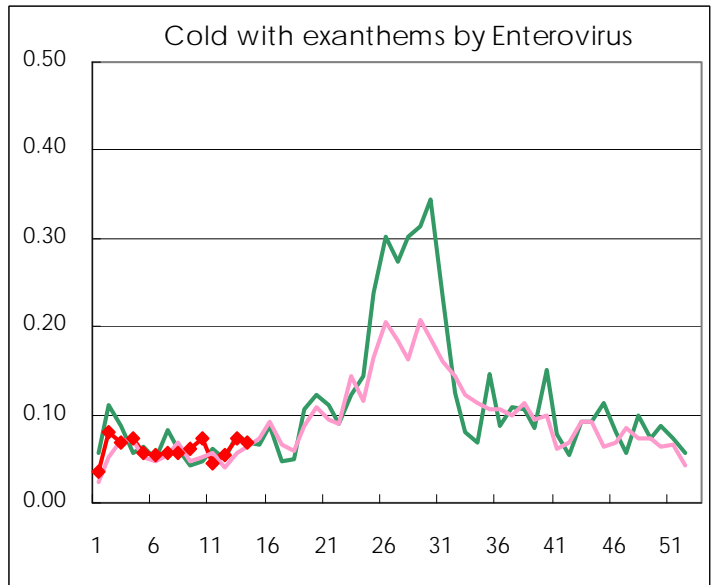
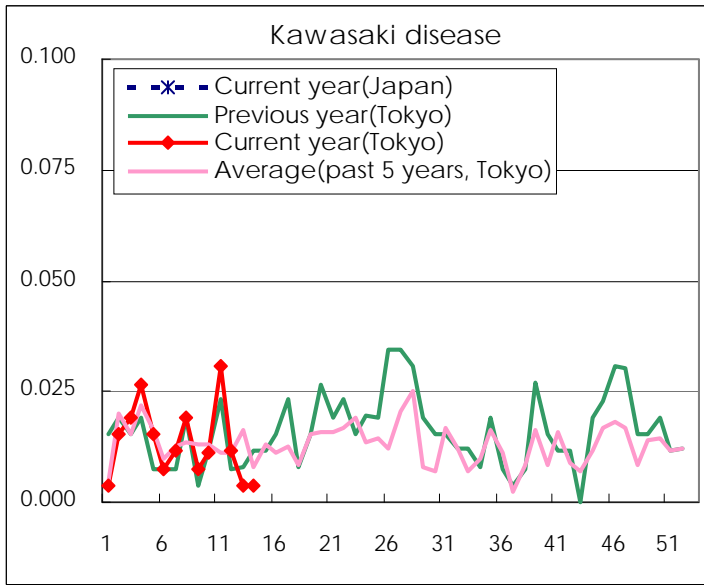
Diseases	Tokyo				
	11th	12th	13th	14th	/sentinel
Respiratory syncytial virus infection	45	31	26	34	0.13
Pharyngoconjunctival fever	49	59	31	28	0.11
Group A streptococcal pharyngitis	525	386	365	325	1.25
Infectious gastroenteritis	2148	2,020	2,171	2,311	8.85
Chickenpox	281	351	256	246	0.94
Hand, foot, and mouth disease	2	9	13	2	0.01
Erythema infectiosum	36	28	33	34	0.13
Exanthem subitum	121	105	160	127	0.49
Pertussis	5	4	2	10	0.04
Herpangina	2	3	1	4	0.02
Mumps	40	44	46	49	0.19
Kawasaki disease	8	3	1	1	0.00
Cold with exanthems by Enterovirus	12	14	19	18	0.07
Influenza	6,641	4,952	3,414	1,881	4.54
Acute hemorrhagic conjunctivitis					
Epidemic keratoconjunctivitis	14	10	16	9	0.24
Bacterial meningitis	1		1		
Aseptic meningitis		3	2		
Mycoplasma pneumonia	14	15	14	10	0.40
Chlamydial pneumonia (excluding psittacosis)					
Influenza-Associated Hospitalizations	18	17	19	8	0.32

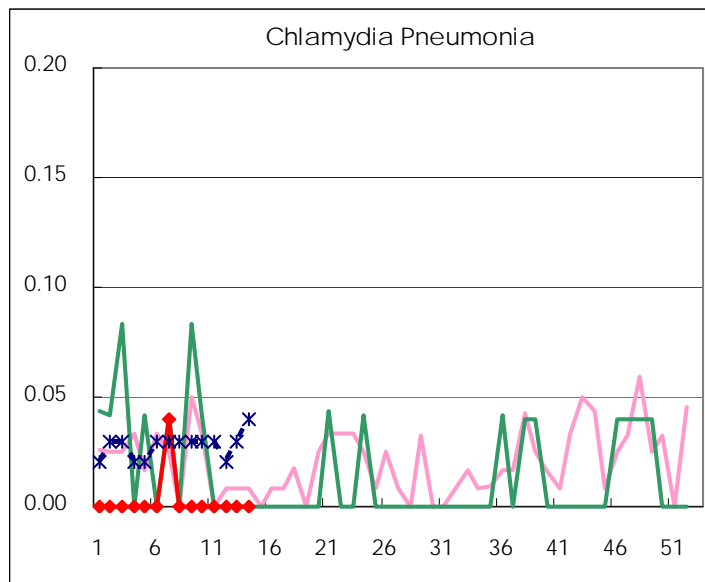
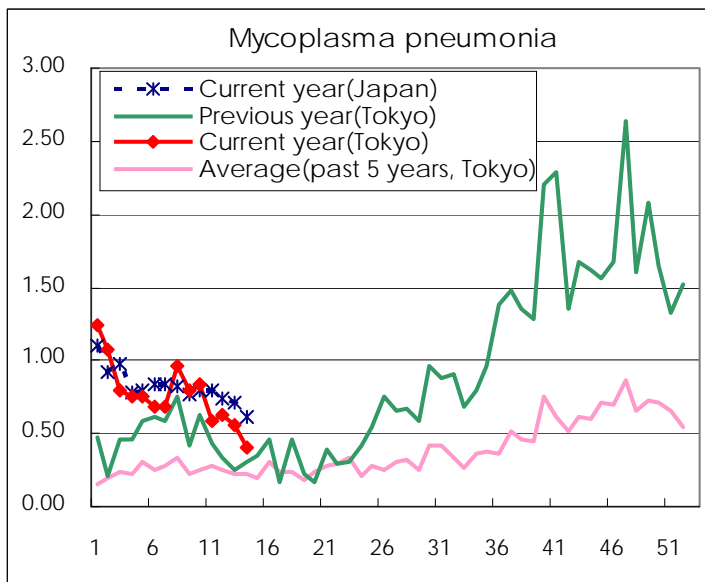
( Blank means 0. )

# Disease Trend Graph (weekly reported cases per sentinel in comparison)









Number of sentinel facilities for weekly reporting		
Types of sentinels	Number of sentinels	Sentinels having reported
Pediatric	264	261
Influenza	419	414
Ophthalmic	39	38
Specially-designated	25	25

Tokyo Metropolitan Government  
**Infectious Disease Surveillance Center**