

---

INFECTIOUS DISEASES WEEKLY REPORT

# TOKYO IDWR

Tokyo Metropolitan Infectious Disease Surveillance Center

---

## 26 April 2012 / Number 16

### Surveillance System in Tokyo, Japan

The infectious diseases which all physicians must report

All physicians must report to health centers the incidence of the diseases which are shown at page one. Health centers electronically report the individual cases to Tokyo Metropolitan Infectious Disease Surveillance Center.

The infectious diseases required to be reported by the sentinels

The numbers of patients who visit the sentinel clinics or hospitals during a week are reported to health centers in Tokyo. And they electronically report the numbers to Tokyo Metropolitan Infectious Disease Surveillance Center. We have about 500 sentinel clinics and hospitals in Tokyo.

1st Week is early January and 52nd Week is end of December.

Tokyo Metropolitan Institute of Public Health

TEL:81-3-3363-3213 FAX:81-3-5332-7365

e-mail:[idsc@tokyo-eiken.go.jp](mailto:idsc@tokyo-eiken.go.jp)

URL:[idsc.tokyo-eiken.go.jp/](http://idsc.tokyo-eiken.go.jp/)

---

## Number of patients with the diseases which all physicians must report

Category	Diseases	Tokyo				Japan		
		13th	14th	15th	16th	Cum 2012	16th	Cum 2012
I	Ebola hemorrhagic fever							
	Crimean-Congo hemorrhagic fever							
	Smallpox							
	South American hemorrhagic fever							
	Plague							
	Marburg disease							
	Lassa fever							
II	Acute poliomyelitis							
	Tuberculosis	102	77	73	65	1,301	341	8,254
	Diphtheria							
	Severe Acute Respiratory Syndrome(SARS)							
	Avian influenza H5N1							
III	Cholera							1
	Shigellosis	2				22		79
	Enterohemorrhagic Escherichia coli infection		2	2	3	15	9	222
	Typhoid fever	1				4		10
	Paratyphoid fever		1	1		4		8
IV	Hepatitis E		1		1	8	2	47
	West Nile fever							
	Hepatitis A	1		1	1	7	3	46
	Echinococcosis							4
	Yellow fever							
	Psittacosis							1
	Omsk hemorrhagic fever							
	Relapsing fever							
	Kyasanur forest disease							
	Q fever							
	Rabies							
	Coccidioidomycosis							1
	Monkeypox							
	Hemorrhagic fever with renal syndrome							
	Western equine encephalitis							
	Tick-borne encephalitis							
	Anthrax							
	Chikungunya fever							
	Scrub typhus(Tsutsugamushi disease)					1	3	64
	Dengue fever			1	1	12	1	44
	Eastern equine encephalitis							
	Avian influenza (excluding H5N1)							
	Nipah virus infection							
	Japanese spotted fever						1	1
	Japanese encephalitis							
	Hantavirus pulmonary syndrome							
	Herpes B virus infection							
	Glanders							
	Brucellosis							
	Venezuelan equine encephalitis							
	Hendra virus infection							
	Epidemic typhus							
Botulism							2	
Malaria	2			1	5	2	16	
Tularemia								
Lyme disease								
Lyssavirus infection(excluding rabies)								
Rift valley fever								
Melioidosis								
Legionellosis		2	1		14	2	179	
Leptospirosis			1		2		3	
Rocky mountain spotted fever								

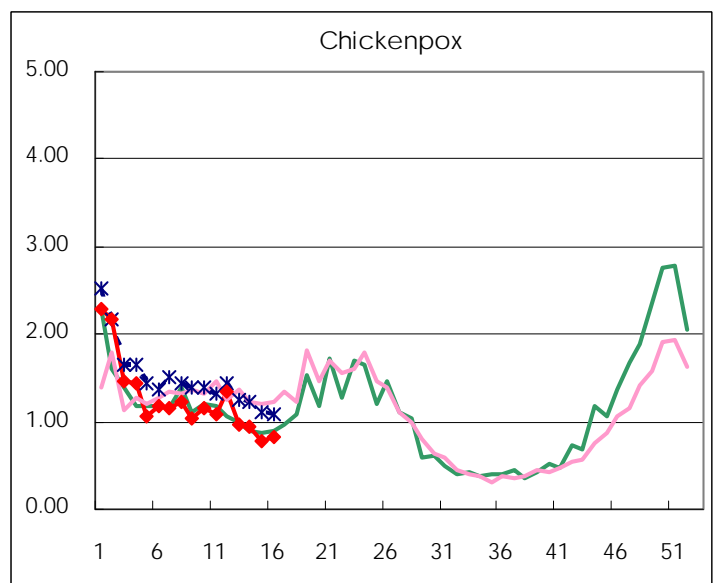
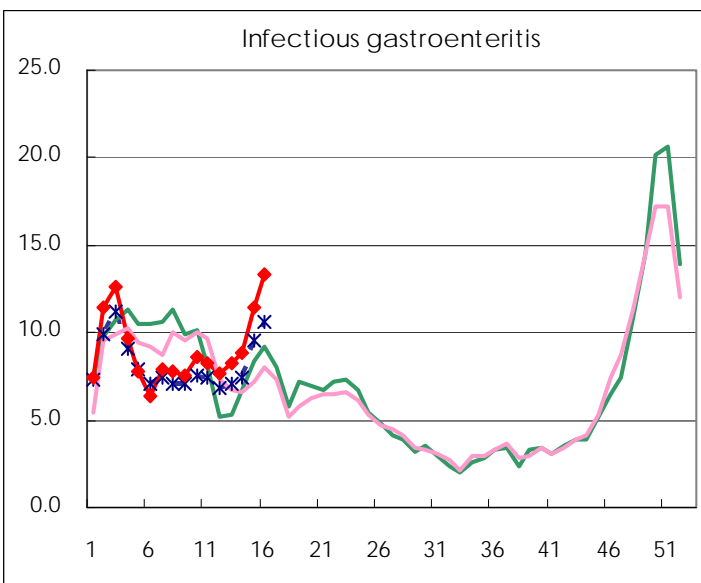
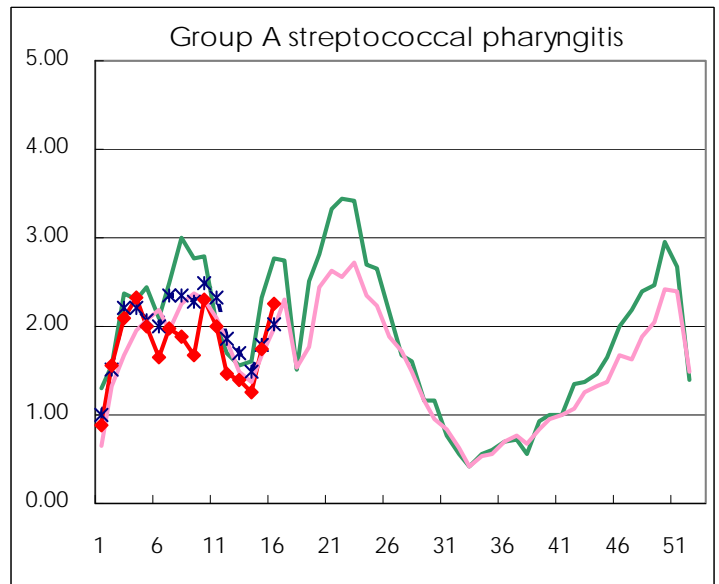
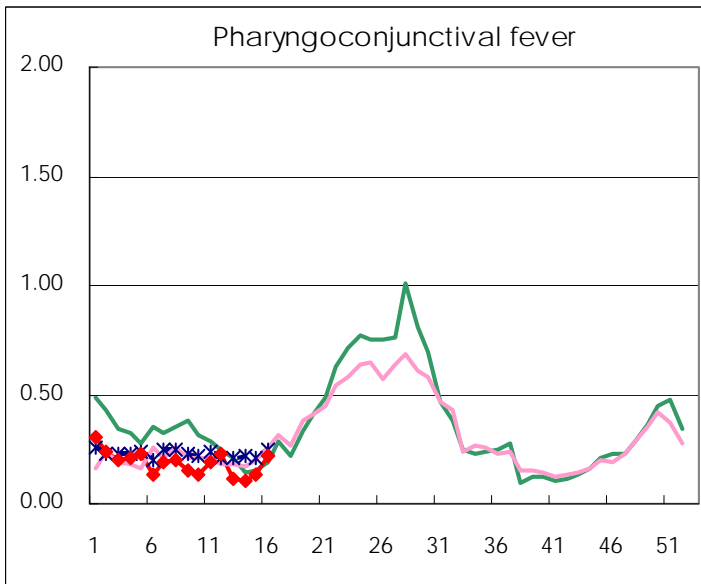
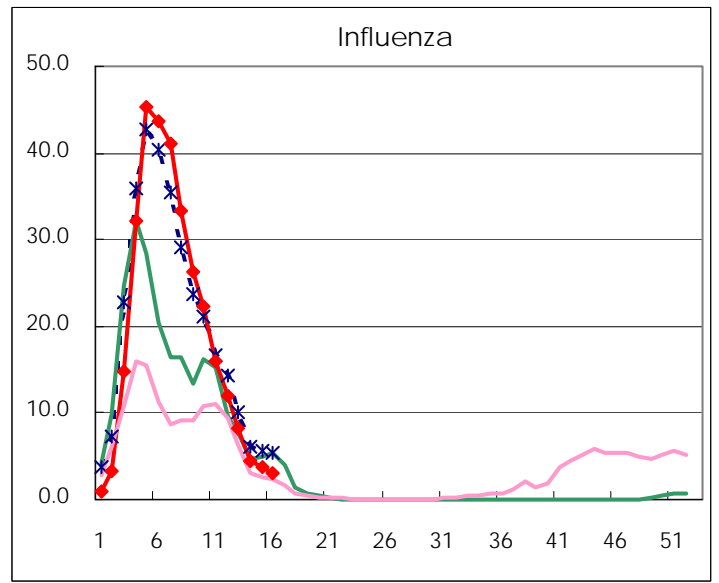
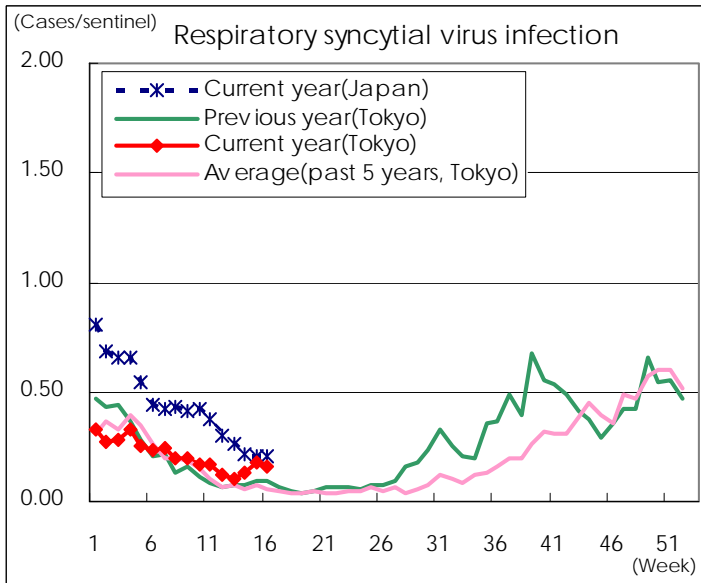
Category	Diseases	Tokyo				Japan		
		13th	14th	15th	16th	Cum 2012	16th	Cum 2012
V	Amebiasis	1	2	2	2	52	10	244
	Viral hepatitis(excluding hepatitis A and E)	1	1	1		15	6	61
	Acute encephalitis(excluding JE and WNE)		1			14	5	168
	Cryptosporidiosis				1	2		5
	Creutzfeldt-Jakob disease			1		5	1	51
	Severe invasive streptococcal infections(TSLS)	1	1	1		8	5	96
	Acquired immunodeficiency syndrome (AIDS)	8	6	10	8	130	11	379
	Giardiasis				1	4	1	13
	Meningococcal meningitis							5
	Congenital rubella syndrome							
	Syphilis		6	10	5	87	8	232
	Tetanus	1				1	4	26
	Vancomycin-resistant S. aureus infection							
	Vancomycin-resistant Enterococcus infection					4	1	25
	Rubella	2			1	18	6	133
	Measles	2			1	18	4	111

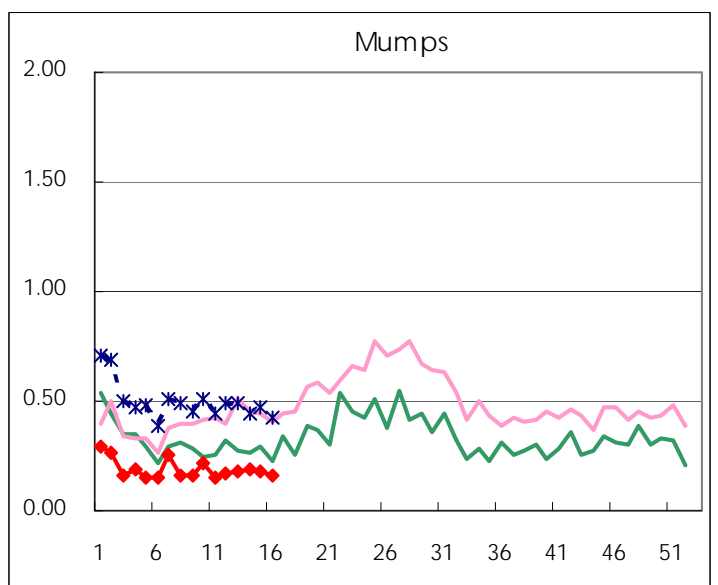
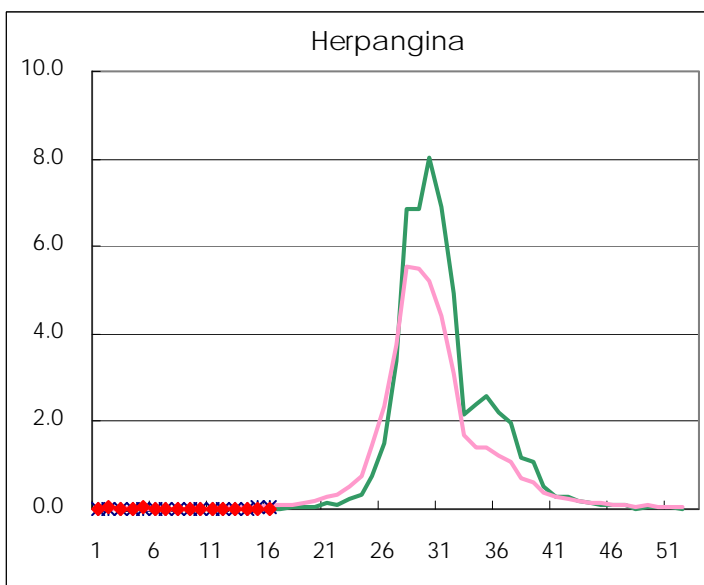
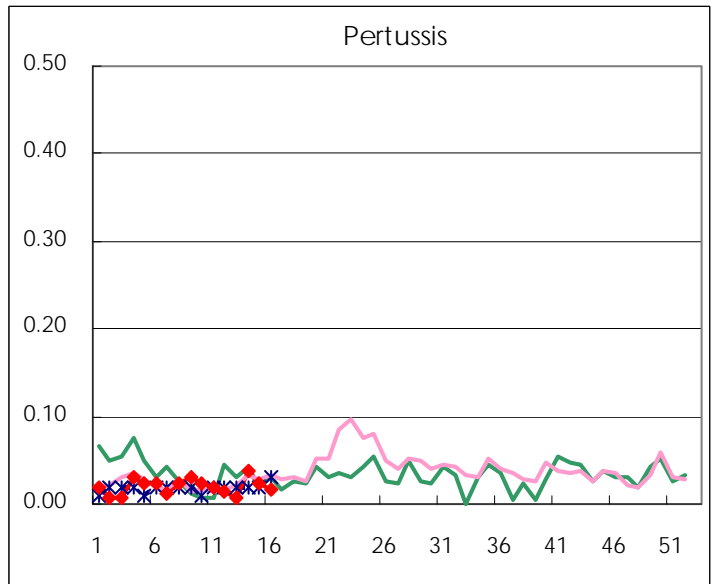
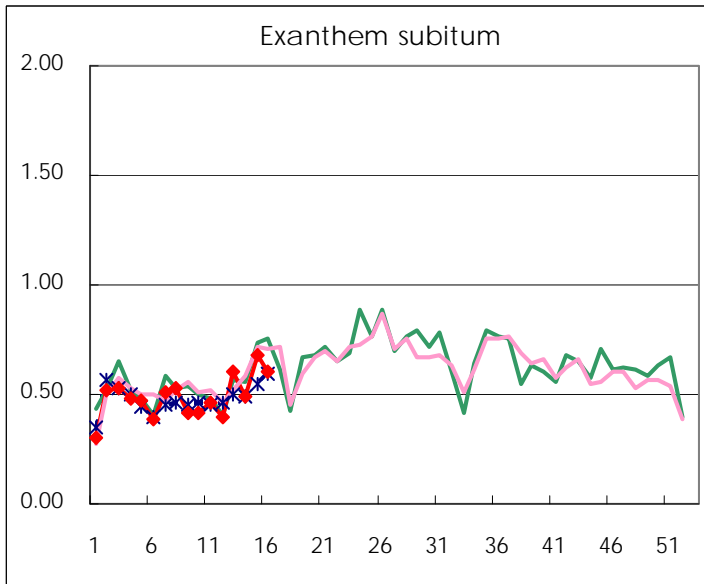
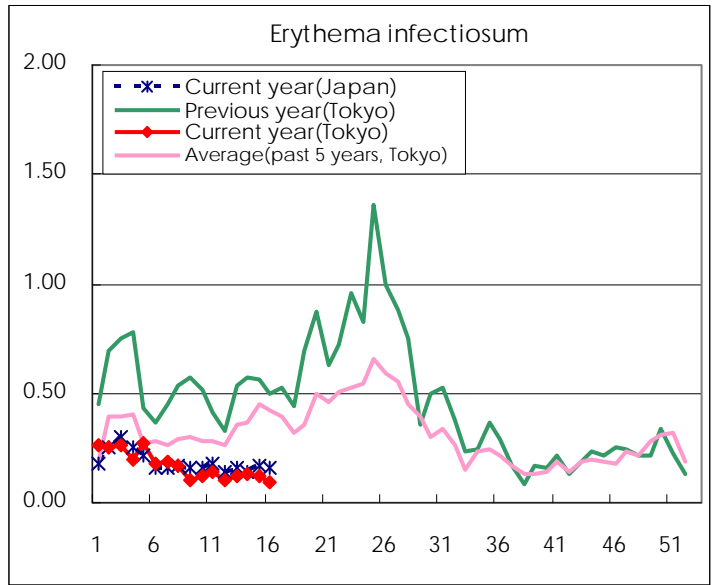
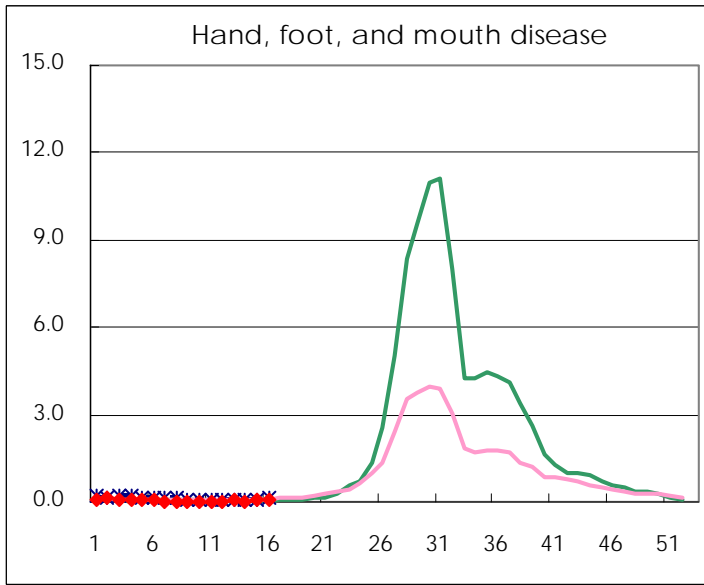
Number of patients with the diseases to be reported  
by the designated clinics and hospitals

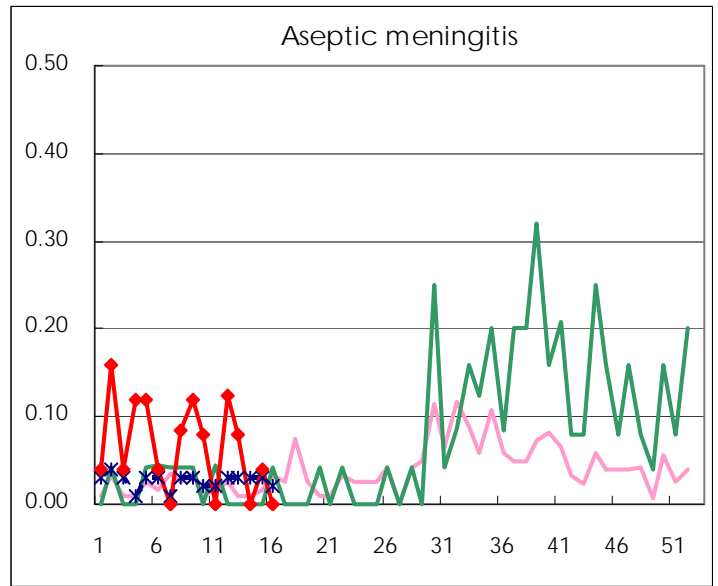
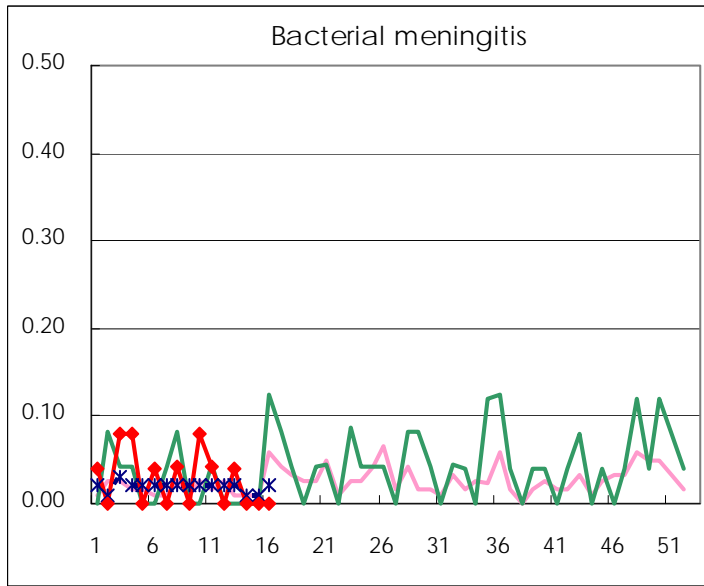
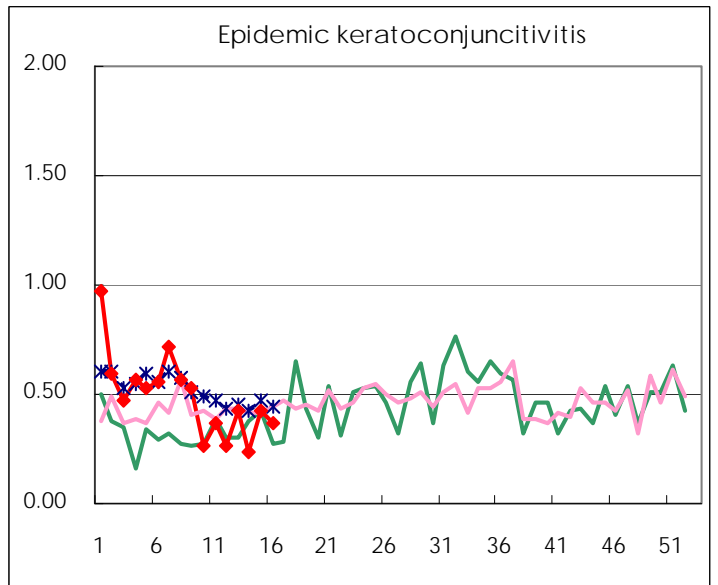
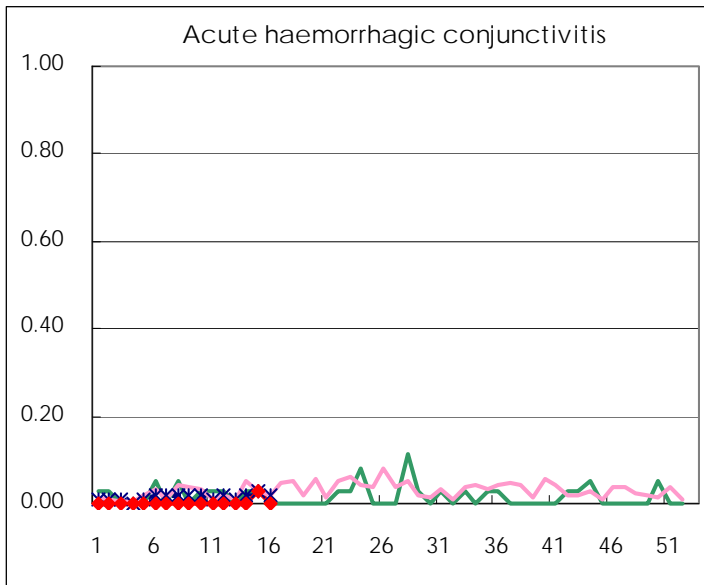
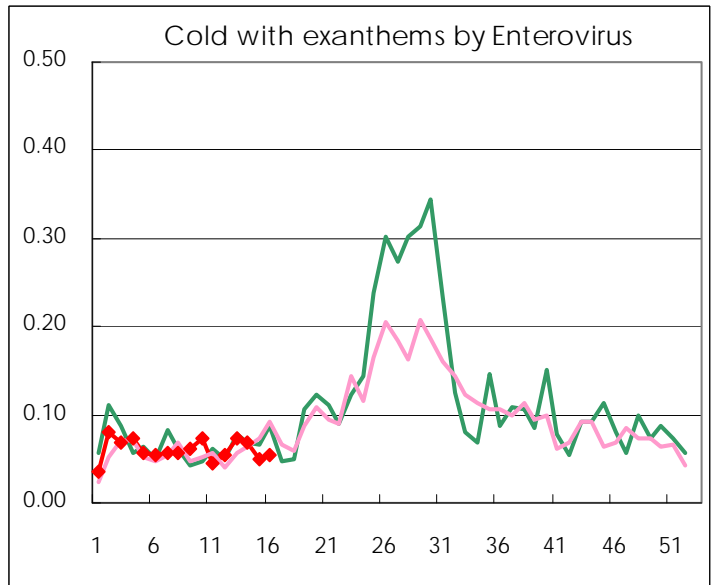
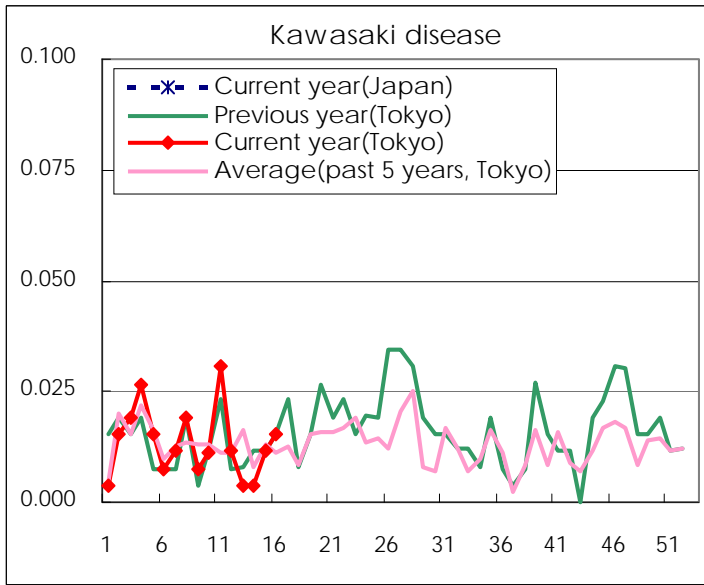
Diseases	Tokyo				
	13th	14th	15th	16th	/sentinel
Respiratory syncytial virus infection	26	34	47	41	0.16
Pharyngoconjunctival fever	31	28	34	56	0.22
Group A streptococcal pharyngitis	365	325	457	584	2.25
Infectious gastroenteritis	2171	2,311	3,003	3,458	13.30
Chickenpox	256	246	206	212	0.82
Hand, foot, and mouth disease	13	2	14	11	0.04
Erythema infectiosum	33	34	31	24	0.09
Exanthem subitum	160	127	177	158	0.61
Pertussis	2	10	6	4	0.02
Herpangina	1	4	4	5	0.02
Mumps	46	49	48	42	0.16
Kawasaki disease	1	1	3	4	0.02
Cold with exanthems by Enterovirus	19	18	13	14	0.05
Influenza	3,414	1,881	1,585	1,273	3.07
Acute hemorrhagic conjunctivitis			1		
Epidemic keratoconjunctivitis	16	9	16	14	0.37
Bacterial meningitis	1				
Aseptic meningitis	2		1		
Mycoplasma pneumonia	14	10	16	27	1.08
Chlamydial pneumonia (excluding psittacosis)					
Influenza-Associated Hospitalizations	19	8	13	9	0.36

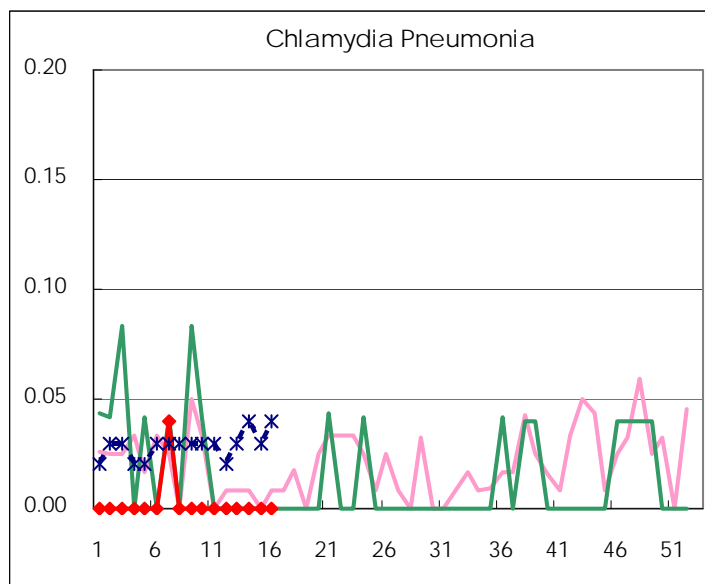
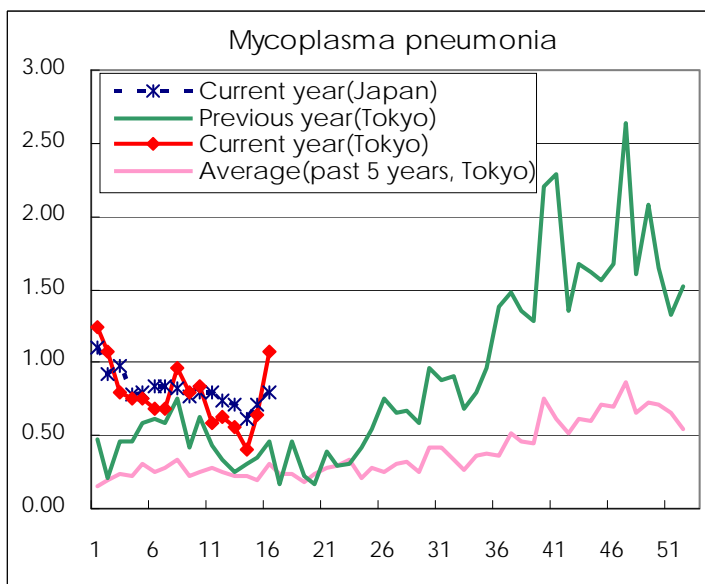
( Blank means 0. )

# Disease Trend Graph (weekly reported cases per sentinel in comparison)









Number of sentinel facilities for weekly reporting		
Types of sentinels	Number of sentinels	Sentinels having reported
Pediatric	264	260
Influenza	419	415
Ophthalmic	39	38
Specially-designated	25	25

Tokyo Metropolitan Government  
**Infectious Disease Surveillance Center**