

---

INFECTIOUS DISEASES WEEKLY REPORT

# TOKYO IDWR

Tokyo Metropolitan Infectious Disease Surveillance Center

## 7 May 2012 / Number 17

### Surveillance System in Tokyo, Japan

The infectious diseases which all physicians must report

All physicians must report to health centers the incidence of the diseases which are shown at page one. Health centers electronically report the individual cases to Tokyo Metropolitan Infectious Disease Surveillance Center.

The infectious diseases required to be reported by the sentinels

The numbers of patients who visit the sentinel clinics or hospitals during a week are reported to health centers in Tokyo. And they electronically report the numbers to Tokyo Metropolitan Infectious Disease Surveillance Center. We have about 500 sentinel clinics and hospitals in Tokyo.

1st Week is early January and 52nd Week is end of December.

Tokyo Metropolitan Institute of Public Health

TEL:81-3-3363-3213 FAX:81-3-5332-7365

e-mail:[idsc@tokyo-eiken.go.jp](mailto:idsc@tokyo-eiken.go.jp)

URL:[idsc.tokyo-eiken.go.jp/](http://idsc.tokyo-eiken.go.jp/)

---

## Number of patients with the diseases which all physicians must report

Category	Diseases	Tokyo				Japan			
		14th	15th	16th	17th	Cum 2012	17th	Cum 2012	
I	Ebola hemorrhagic fever								
	Crimean-Congo hemorrhagic fever								
	Smallpox								
	South American hemorrhagic fever								
	Plague								
	Marburg disease								
	Lassa fever								
II	Acute poliomyelitis								
	Tuberculosis	82	81	71	88	1,432	379	8,961	
	Diphtheria								
	Severe Acute Respiratory Syndrome(SARS)								
	Avian influenza H5N1								
III	Cholera							1	
	Shigellosis				2	24	1	81	
	Enterohemorrhagic Escherichia coli infection	2	2	3	1	16	7	226	
	Typhoid fever					4		10	
	Paratyphoid fever	1	1			4	1	9	
IV	Hepatitis E	1		1		8	1	51	
	West Nile fever								
	Hepatitis A		1	1		7	5	51	
	Echinococcosis							5	
	Yellow fever								
	Psittacosis							1	
	Omsk hemorrhagic fever								
	Relapsing fever								
	Kyasanur forest disease								
	Q fever								
	Rabies								
	Coccidioidomycosis							1	
	Monkeypox								
	Hemorrhagic fever with renal syndrome								
	Western equine encephalitis								
	Tick-borne encephalitis								
	Anthrax								
	Chikungunya fever								
	Scrub typhus(Tsutsugamushi disease)					1	1	65	
	Dengue fever		1	1			12		44
	Eastern equine encephalitis								
	Avian influenza (excluding H5N1)								
	Nipah virus infection								
	Japanese spotted fever						1		3
	Japanese encephalitis								
	Hantavirus pulmonary syndrome								
	Herpes B virus infection								
	Glanders								
	Brucellosis								
	Venezuelan equine encephalitis								
	Hendra virus infection								
	Epidemic typhus								
Botulism								2	
Malaria			1			5	2	19	
Tularemia									
Lyme disease									
Lyssavirus infection(excluding rabies)									
Rift valley fever									
Melioidosis									
Legionellosis	2	1				14	10	192	
Leptospirosis		1				2		3	
Rocky mountain spotted fever									

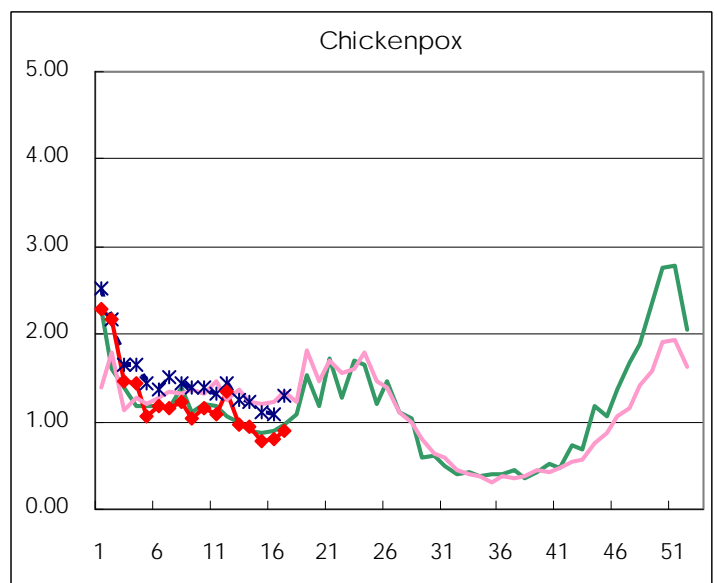
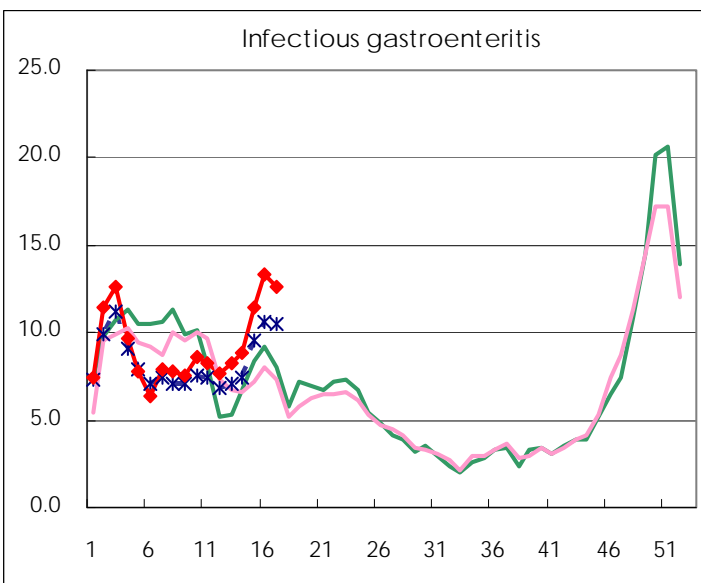
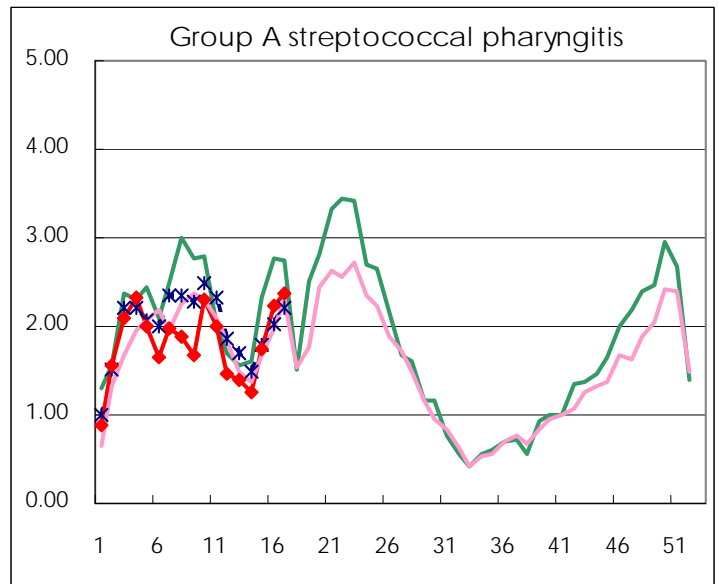
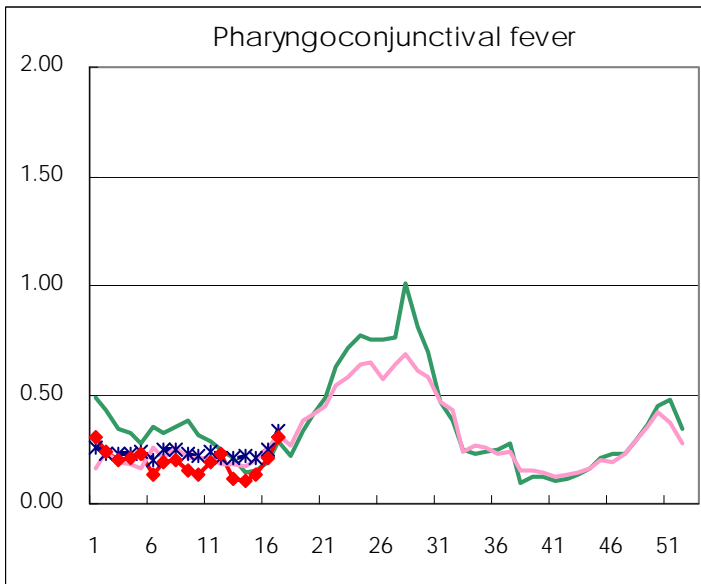
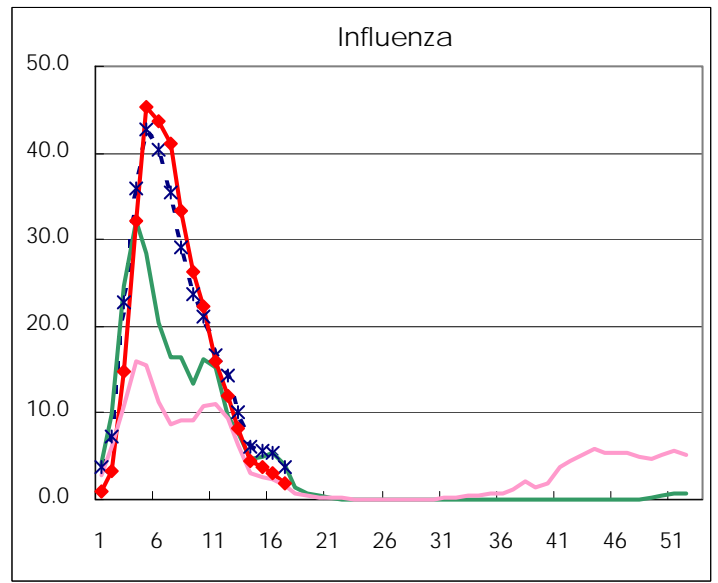
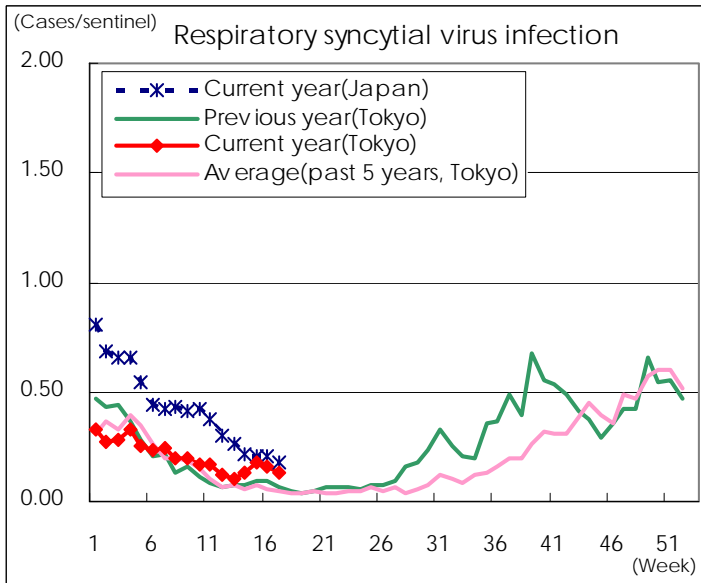
Category	Diseases	Tokyo				Cum 2012	Japan	
		14th	15th	16th	17th		17th	Cum 2012
V	Amebiasis	2	2	2	6	58	10	258
	Viral hepatitis(excluding hepatitis A and E)	1	1			15	1	68
	Acute encephalitis(excluding JE and WNE)	1				14		168
	Cryptosporidiosis			1		2	1	6
	Creutzfeldt-Jakob disease		1			5		51
	Severe invasive streptococcal infections(TSLS)	1	1			8		97
	Acquired immunodeficiency syndrome (AIDS)	6	10	8	9	139	10	398
	Giardiasis			1		4	1	14
	Meningococcal meningitis						1	6
	Congenital rubella syndrome							
	Syphilis	6	10	5	7	94	12	251
	Tetanus					1	1	27
	Vancomycin-resistant S. aureus infection							
	Vancomycin-resistant Enterococcus infection					4		25
	Rubella			1	3	21	9	144
	Measles			1		18	2	110

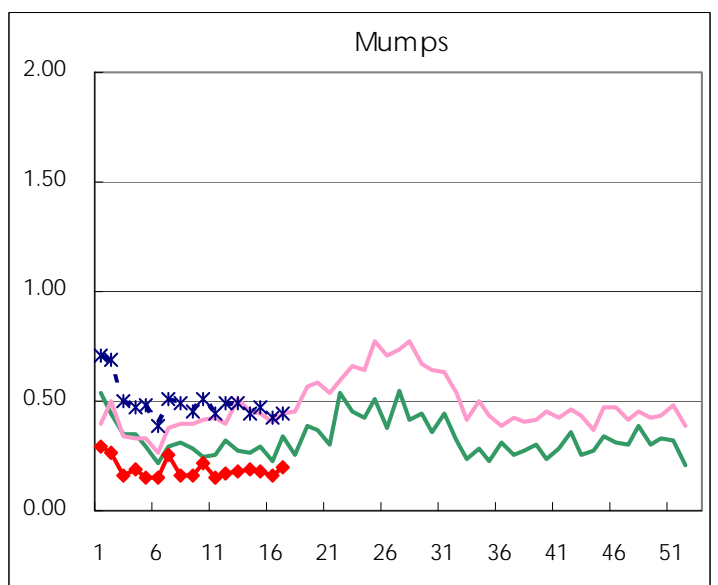
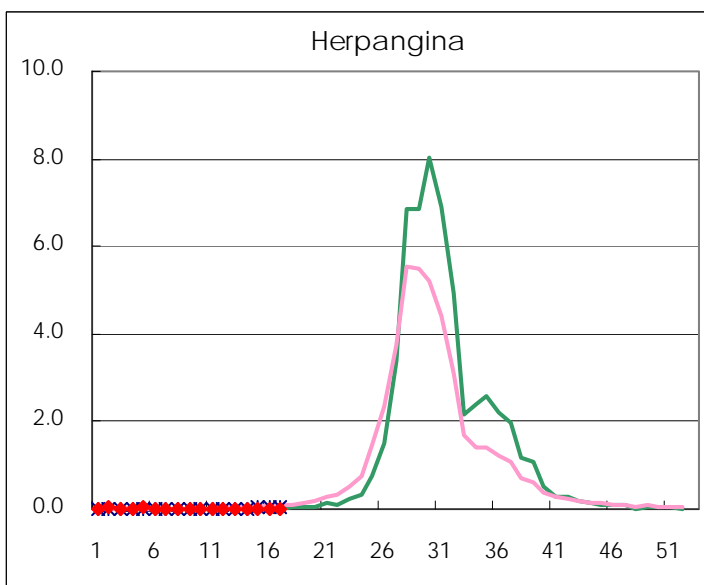
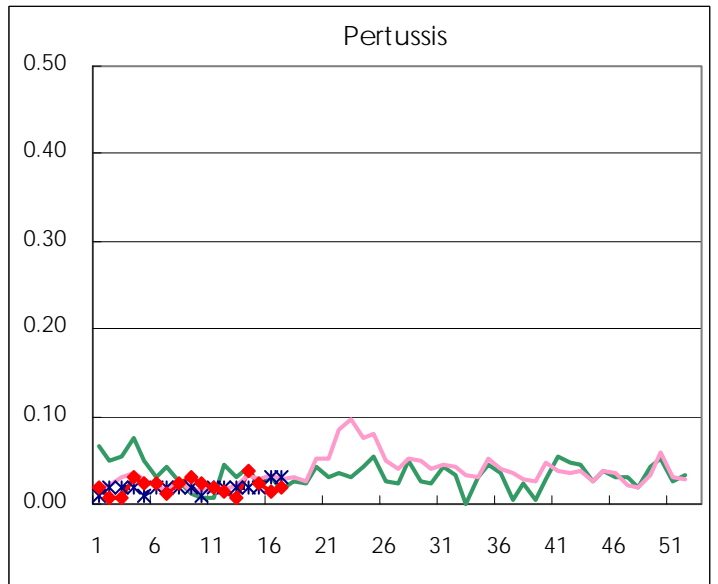
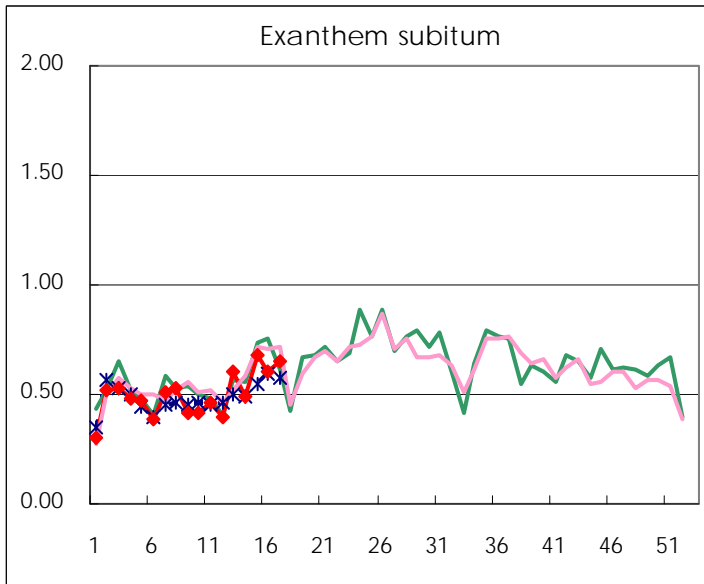
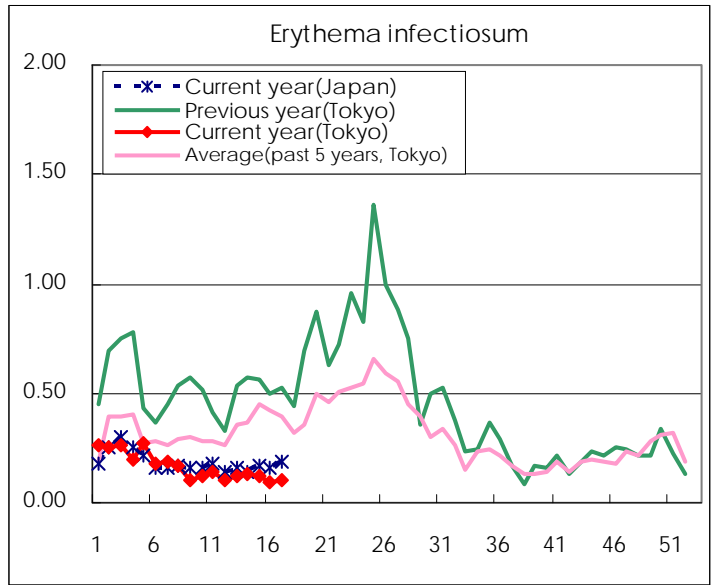
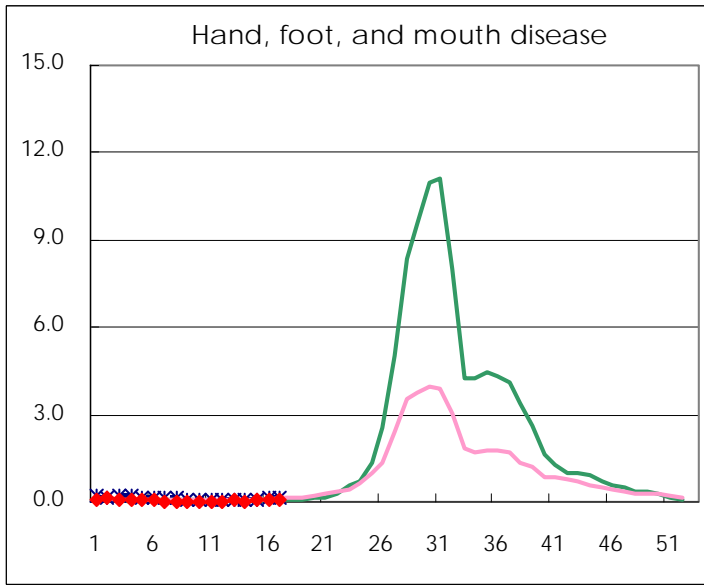
Number of patients with the diseases to be reported  
by the designated clinics and hospitals

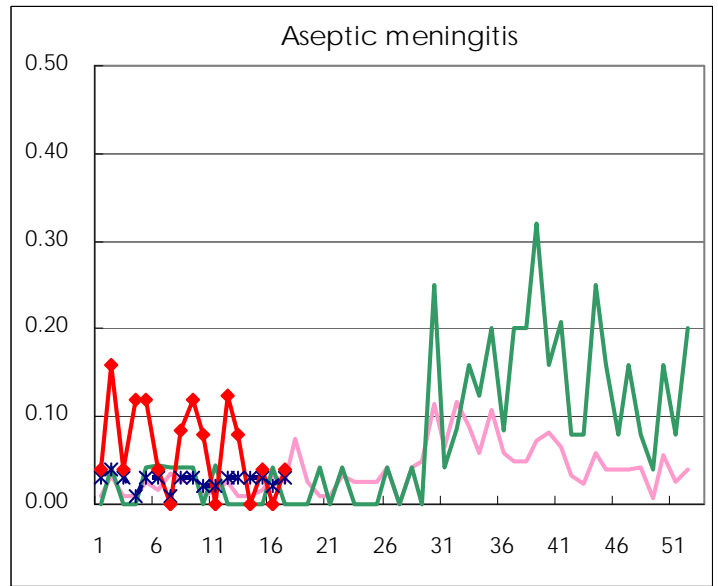
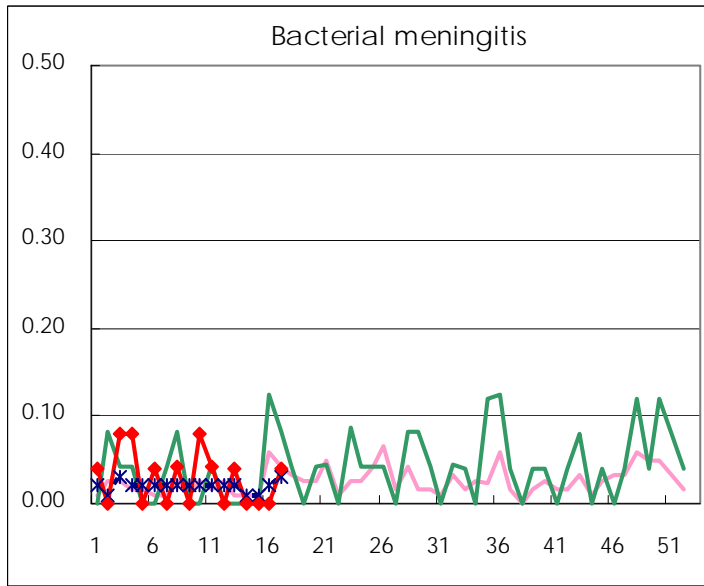
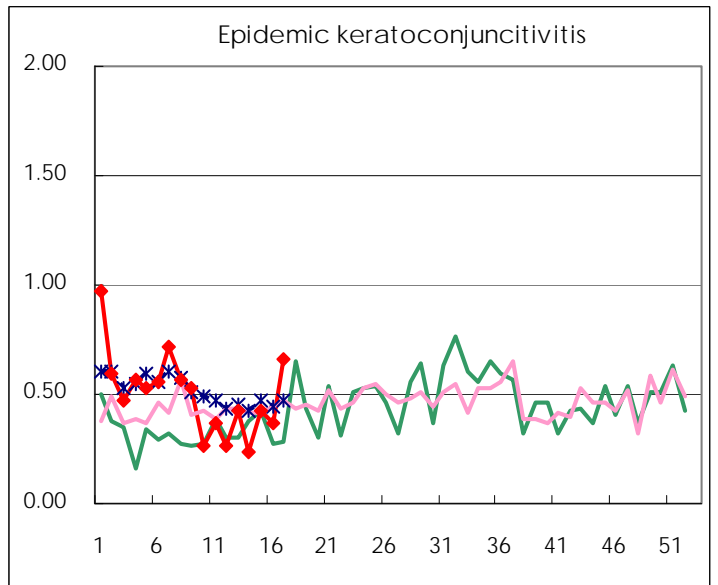
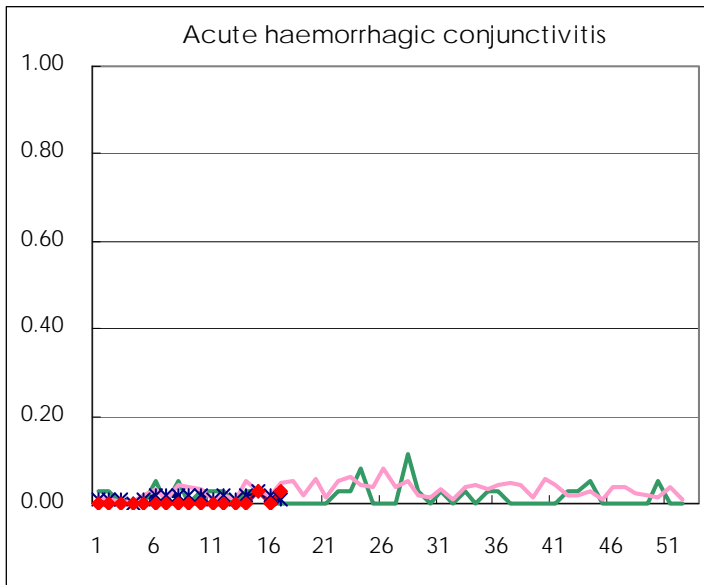
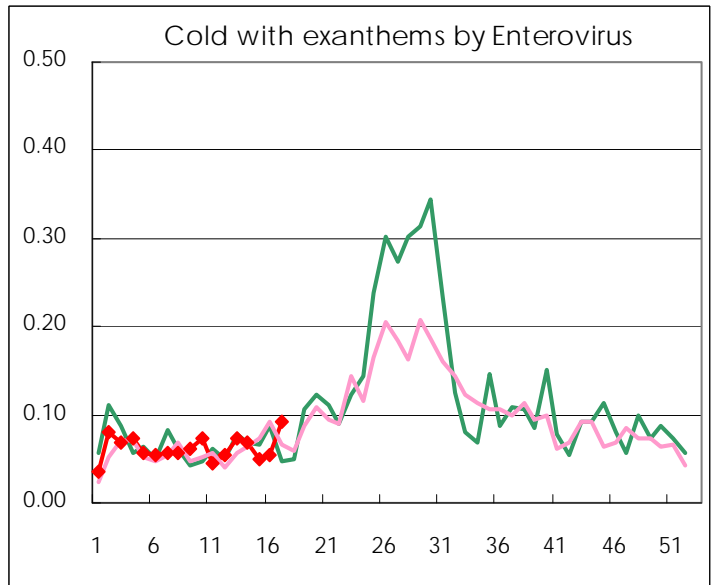
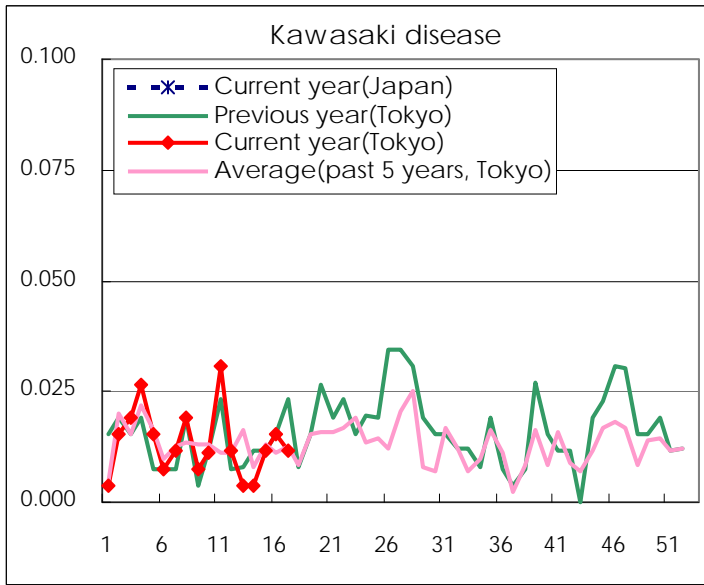
Diseases	Tokyo				
	14th	15th	16th	17th	/sentinel
Respiratory syncytial virus infection	34	47	43	35	0.14
Pharyngoconjunctival fever	28	34	55	78	0.30
Group A streptococcal pharyngitis	325	457	585	612	2.37
Infectious gastroenteritis	2311	3,003	3,487	3,254	12.61
Chickenpox	246	206	212	234	0.91
Hand, foot, and mouth disease	2	14	11	22	0.09
Erythema infectiosum	34	31	24	27	0.10
Exanthem subitum	127	177	158	169	0.66
Pertussis	10	6	4	5	0.02
Herpangina	4	4	5	4	0.02
Mumps	49	48	42	50	0.19
Kawasaki disease	1	3	4	3	0.01
Cold with exanthems by Enterovirus	18	13	14	24	0.09
Influenza	1,881	1,585	1,284	801	1.98
Acute hemorrhagic conjunctivitis		1		1	0.03
Epidemic keratoconjunctivitis	9	16	14	25	0.66
Bacterial meningitis				1	0.04
Aseptic meningitis		1		1	0.04
Mycoplasma pneumonia	10	16	27	17	0.68
Chlamydial pneumonia (excluding psittacosis)				1	0.04
Influenza-Associated Hospitalizations	8	13	9	7	0.28

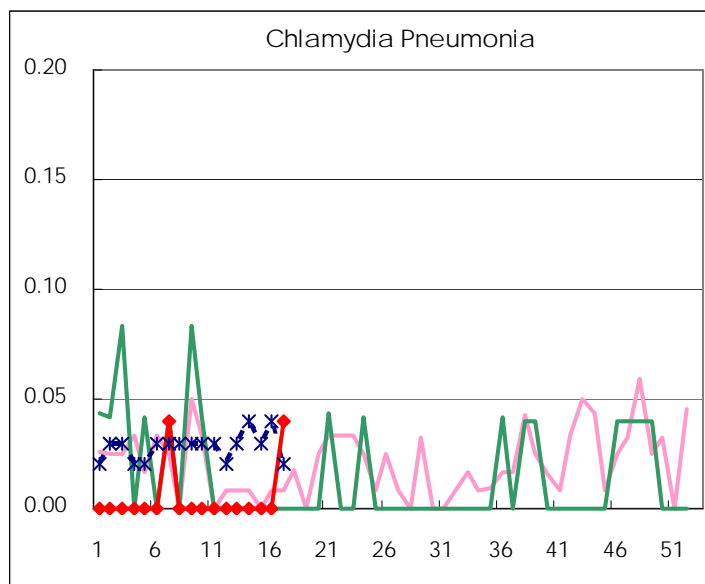
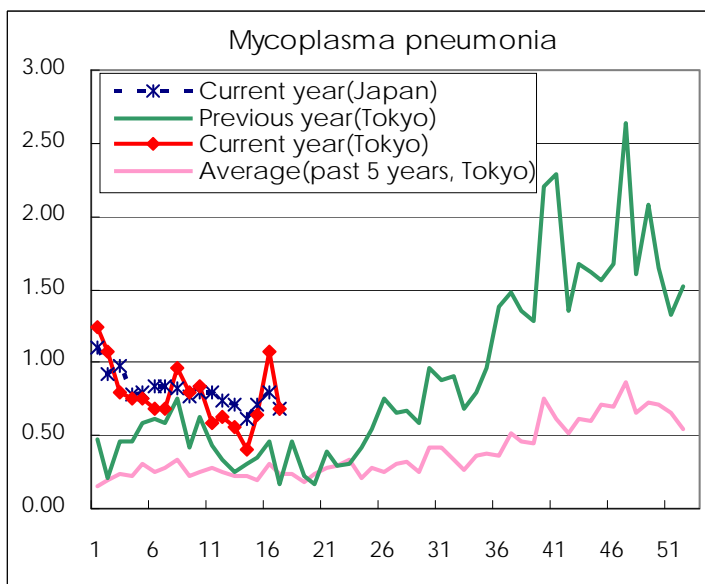
( Blank means 0. )

# Disease Trend Graph (weekly reported cases per sentinel in comparison)









Number of sentinel facilities for weekly reporting		
Types of sentinels	Number of sentinels	Sentinels having reported
Pediatric	264	258
Influenza	419	405
Ophthalmic	39	38
Specially-designated	25	25

Tokyo Metropolitan Government  
**Infectious Disease Surveillance Center**