
INFECTIOUS DISEASES WEEKLY REPORT

TOKYO IDWR

Tokyo Metropolitan Infectious Disease Surveillance Center

10 May 2012 / Number 18

Surveillance System in Tokyo, Japan

The infectious diseases which all physicians must report

All physicians must report to health centers the incidence of the diseases which are shown at page one. Health centers electronically report the individual cases to Tokyo Metropolitan Infectious Disease Surveillance Center.

The infectious diseases required to be reported by the sentinels

The numbers of patients who visit the sentinel clinics or hospitals during a week are reported to health centers in Tokyo. And they electronically report the numbers to Tokyo Metropolitan Infectious Disease Surveillance Center. We have about 500 sentinel clinics and hospitals in Tokyo.

1st Week is early January and 52nd Week is end of December.

Tokyo Metropolitan Institute of Public Health

TEL:81-3-3363-3213 FAX:81-3-5332-7365

e-mail:idsc@tokyo-eiken.go.jp

URL:idsc.tokyo-eiken.go.jp/

Number of patients with the diseases which all physicians must report

Category	Diseases	Tokyo				Japan		
		15th	16th	17th	18th	Cum 2012	18th	Cum 2012
I	Ebola hemorrhagic fever							
	Crimean-Congo hemorrhagic fever							
	Smallpox							
	South American hemorrhagic fever							
	Plague							
	Marburg disease							
	Lassa fever							
II	Acute poliomyelitis							
	Tuberculosis	86	76	97	55	1,506	186	9,365
	Diphtheria							
	Severe Acute Respiratory Syndrome(SARS)							
III	Avian influenza H5N1							
	Cholera							1
	Shigellosis			2	2	26	4	85
	Enterohemorrhagic Escherichia coli infection	2	3	1	3	19	10	240
	Typhoid fever					4		10
IV	Paratyphoid fever	1				4		9
	Hepatitis E		1			8		53
	West Nile fever							
	Hepatitis A	1	1			7	2	54
	Echinococcosis							5
	Yellow fever							
	Psittacosis						2	3
	Omsk hemorrhagic fever							
	Relapsing fever							
	Kyasanur forest disease							
	Q fever							
	Rabies							
	Coccidioidomycosis							1
	Monkeypox							
	Hemorrhagic fever with renal syndrome							
	Western equine encephalitis							
	Tick-borne encephalitis							
	Anthrax							
	Chikungunya fever							
	Scrub typhus(Tsutsugamushi disease)					1		66
	Dengue fever	1	1			12	1	46
	Eastern equine encephalitis							
	Avian influenza (excluding H5N1)							
	Nipah virus infection							
	Japanese spotted fever						2	5
	Japanese encephalitis							
	Hantavirus pulmonary syndrome							
	Herpes B virus infection							
	Glanders							
	Brucellosis							
	Venezuelan equine encephalitis							
	Hendra virus infection							
Epidemic typhus								
Botulism							2	
Malaria		1		2	7	2	22	
Tularemia								
Lyme disease								
Lyssavirus infection(excluding rabies)								
Rift valley fever								
Melioidosis								
Legionellosis	1				14	9	203	
Leptospirosis	1				2		3	
Rocky mountain spotted fever								

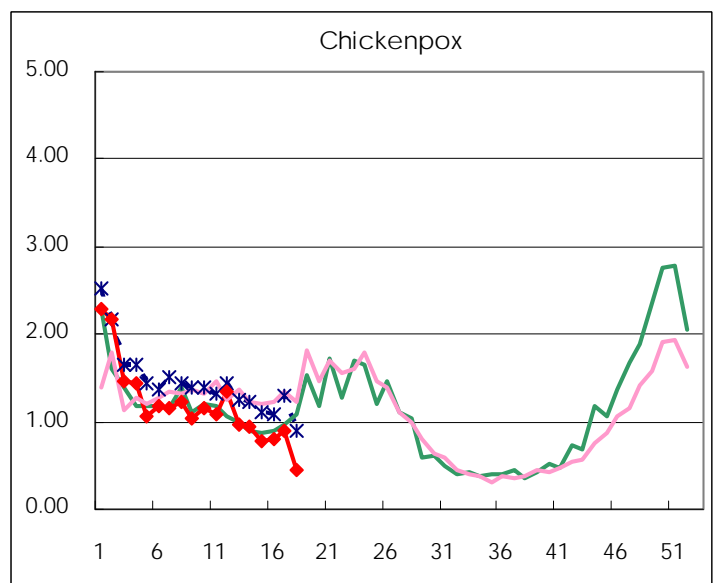
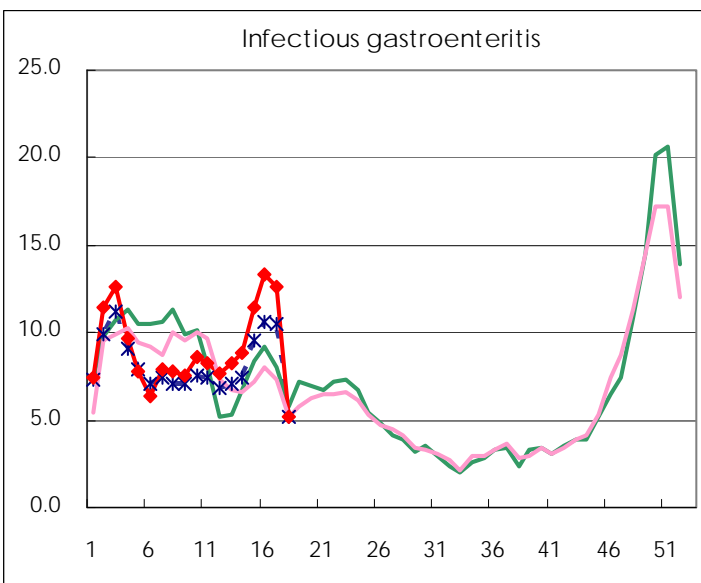
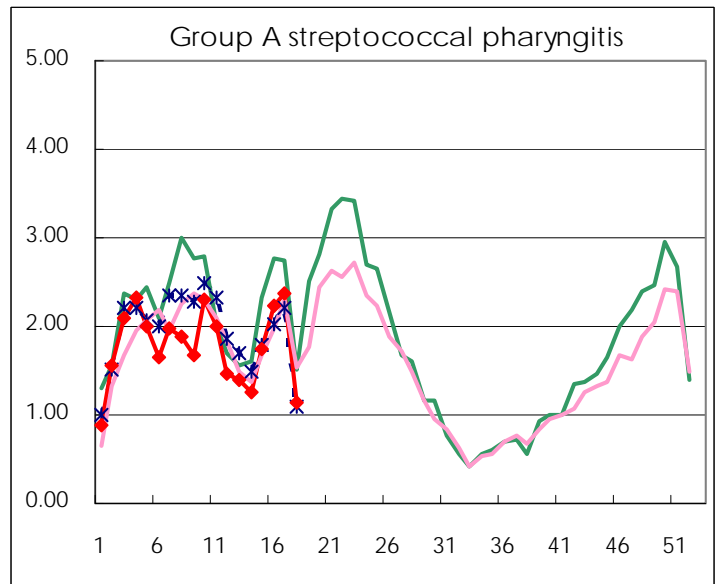
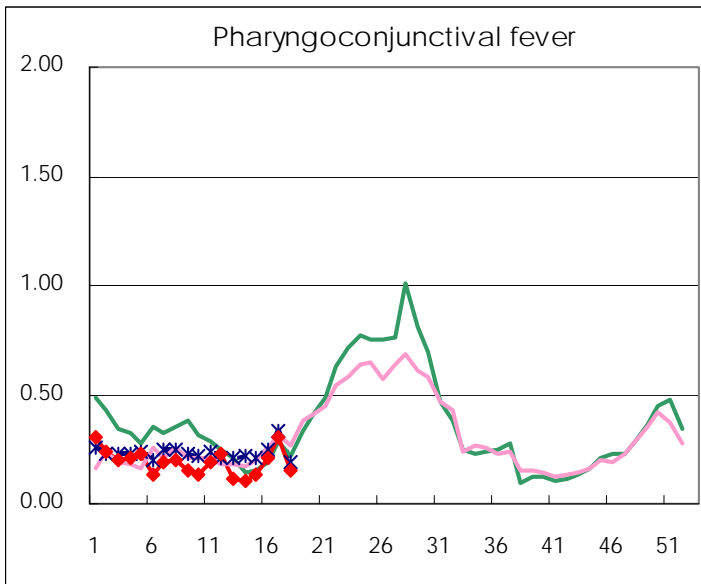
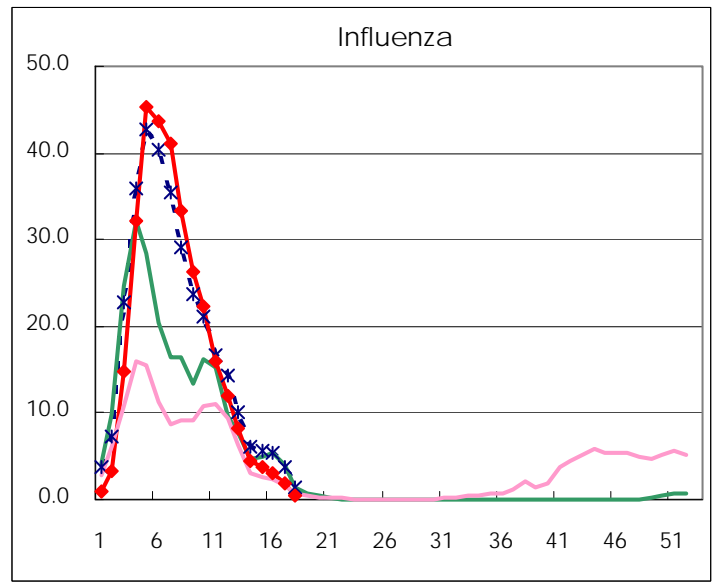
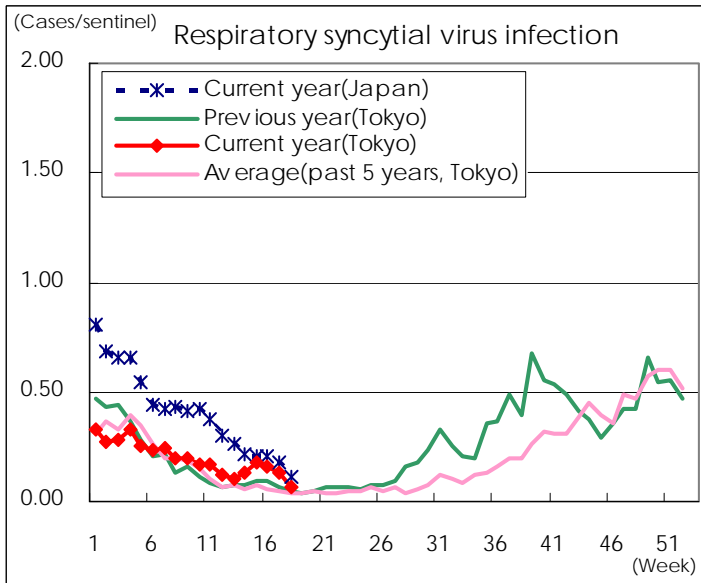
Category	Diseases	Tokyo				Cum 2012	Japan	
		15th	16th	17th	18th		18th	Cum 2012
V	Amebiasis	2	2	6	2	60	5	266
	Viral hepatitis(excluding hepatitis A and E)	1				15	1	70
	Acute encephalitis(excluding JE and WNE)					14		172
	Cryptosporidiosis		1			2		6
	Creutzfeldt-Jakob disease	1				5	2	56
	Severe invasive streptococcal infections(TSLS)	1				8	4	107
	Acquired immunodeficiency syndrome (AIDS)	10	8	9	3	142	10	422
	Giardiasis		1			4		15
	Meningococcal meningitis							6
	Congenital rubella syndrome							
	Syphilis	10	5	7	1	95	1	255
	Tetanus					1		27
	Vancomycin-resistant S. aureus infection							
	Vancomycin-resistant Enterococcus infection					4		26
	Rubella		1	3	2	23	3	153
	Measles		1			18	2	112

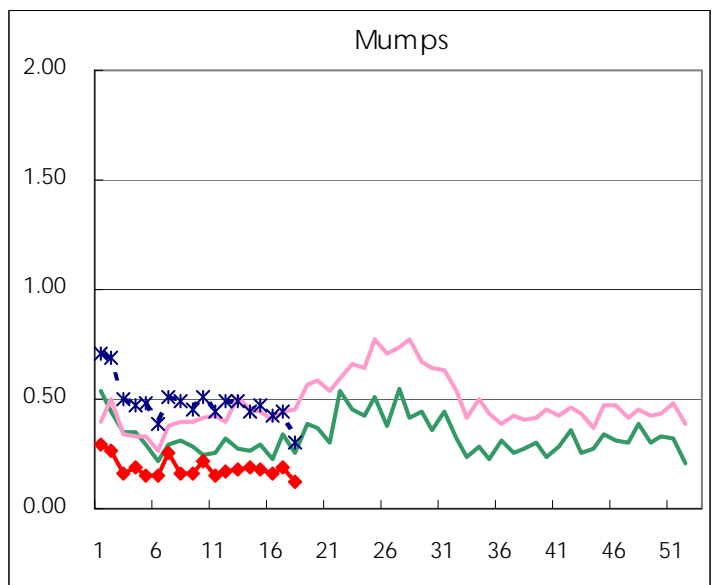
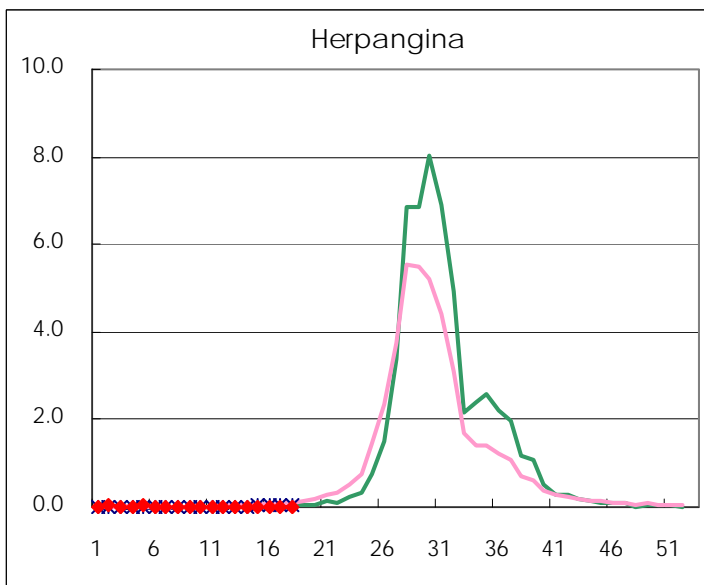
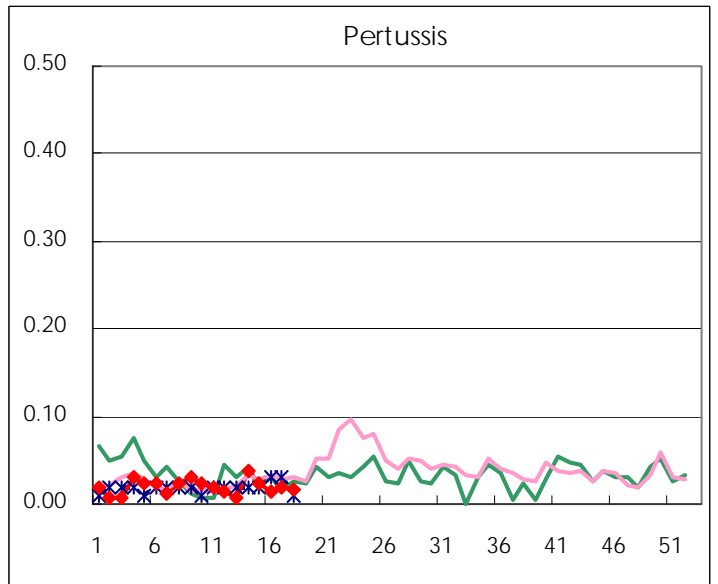
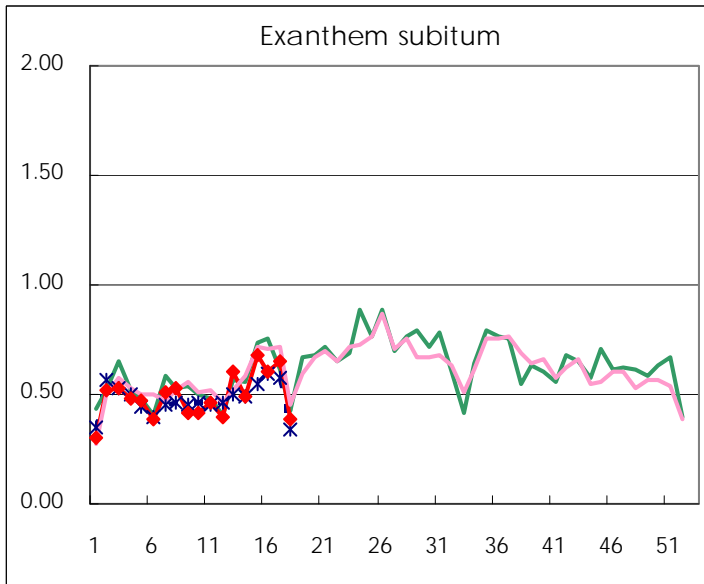
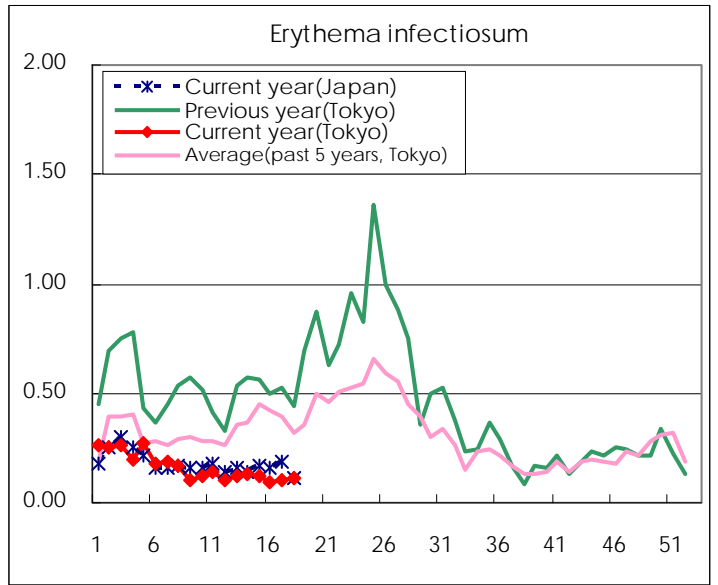
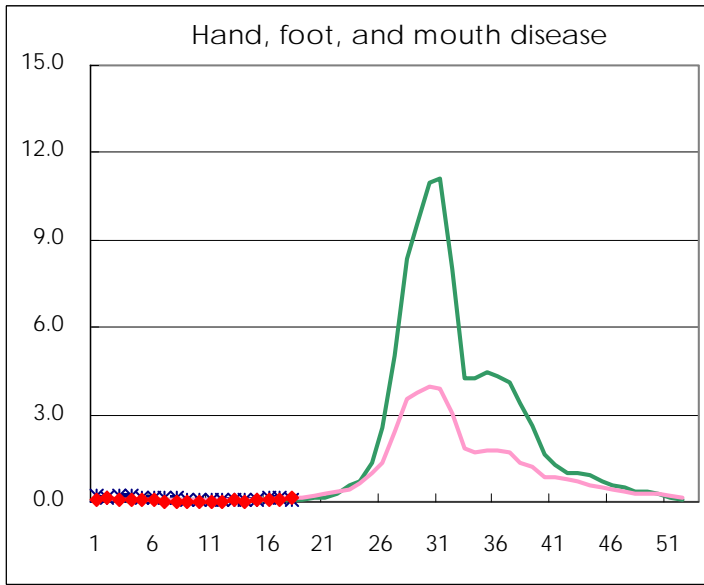
Number of patients with the diseases to be reported
by the designated clinics and hospitals

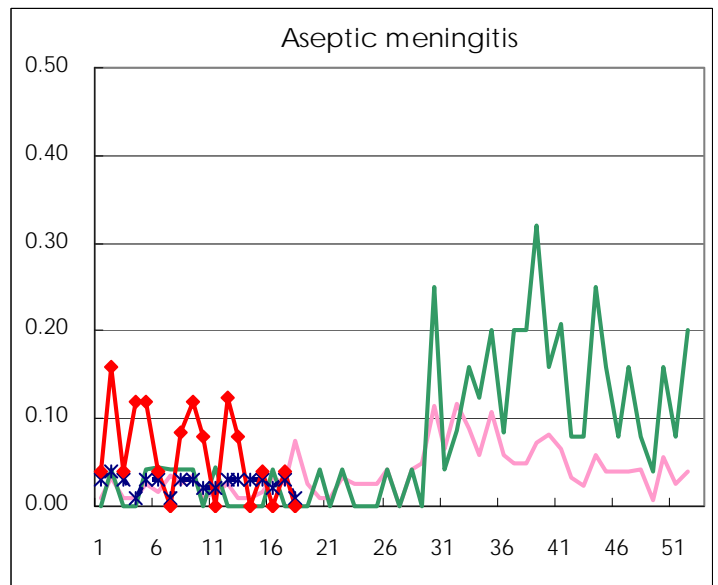
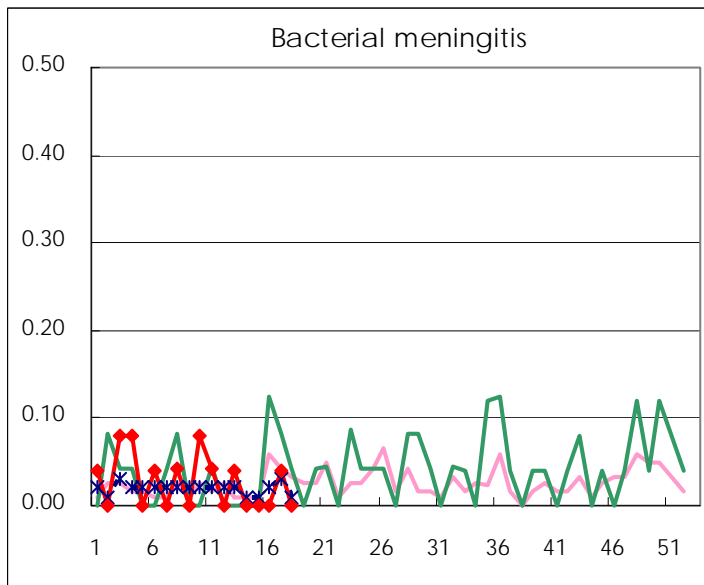
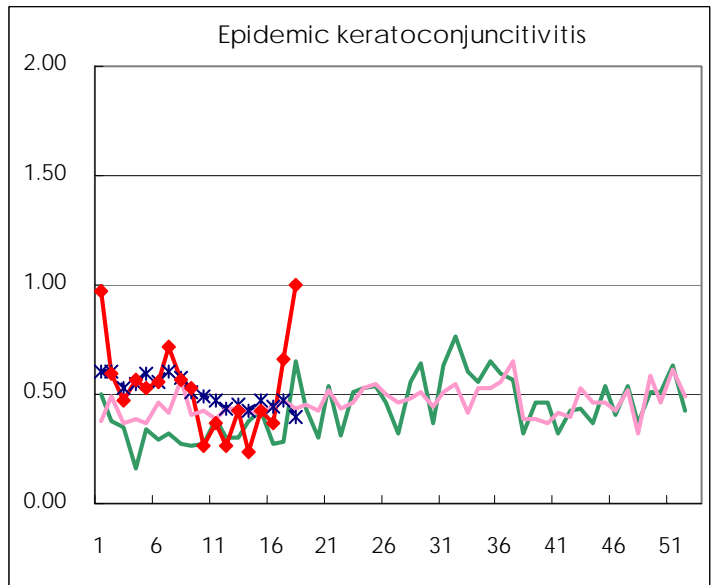
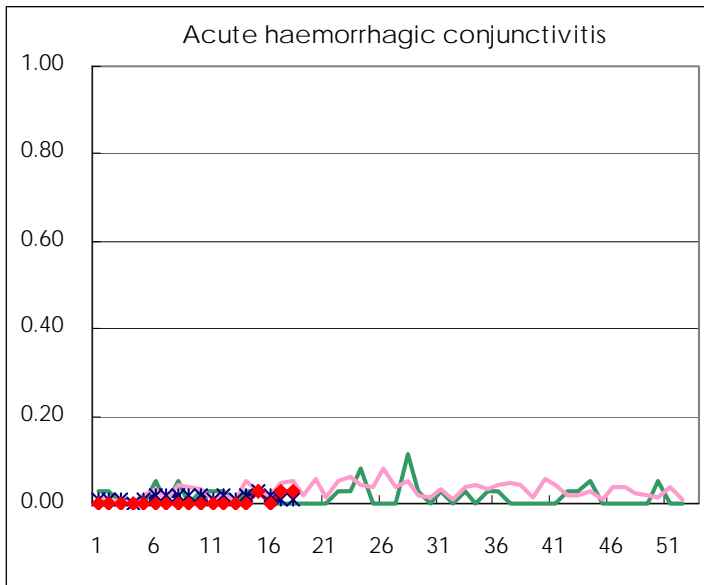
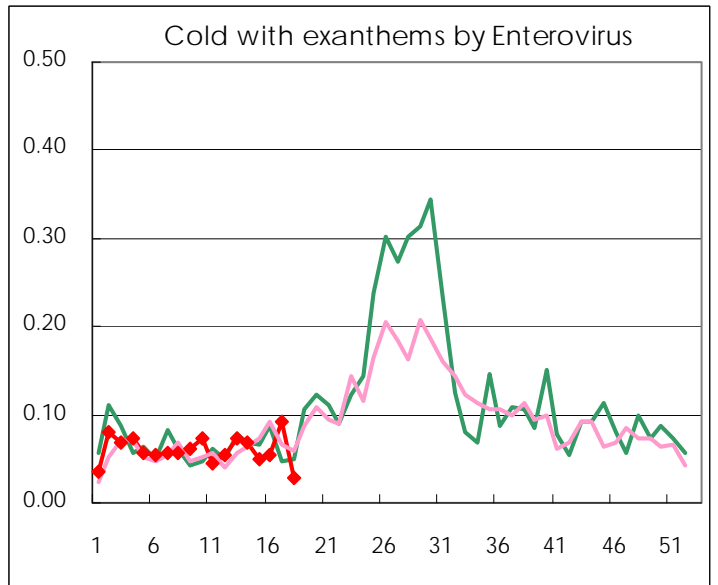
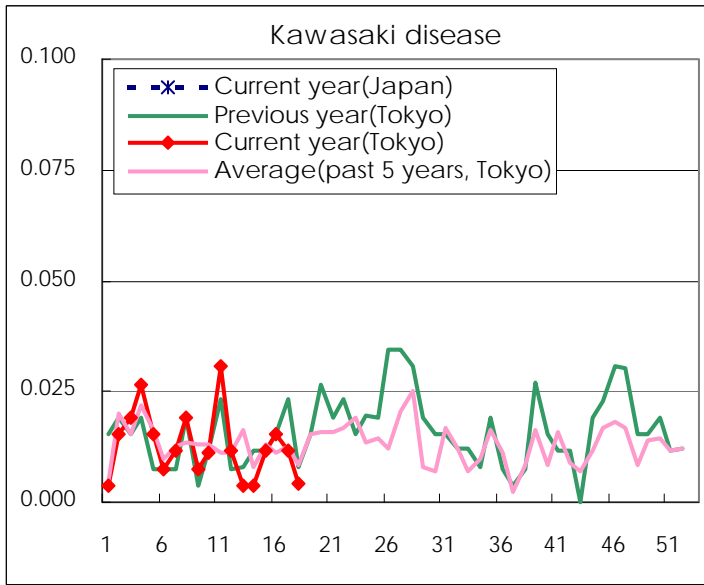
Diseases	Tokyo				
	15th	16th	17th	18th	/sentinel
Respiratory syncytial virus infection	47	43	35	17	0.07
Pharyngoconjunctival fever	34	55	78	39	0.16
Group A streptococcal pharyngitis	457	585	613	285	1.14
Infectious gastroenteritis	3,003	3,487	3,279	1,290	5.14
Chickenpox	206	212	235	114	0.45
Hand, foot, and mouth disease	14	11	22	28	0.11
Erythema infectiosum	31	24	27	28	0.11
Exanthem subitum	177	158	169	97	0.39
Pertussis	6	4	5	4	0.02
Herpangina	4	5	4	4	0.02
Mumps	48	42	50	31	0.12
Kawasaki disease	3	4	3	1	0.004
Cold with exanthems by Enterovirus	13	14	24	7	0.03
Influenza	1,585	1,284	809	197	0.49
Acute hemorrhagic conjunctivitis	1		1	1	0.03
Epidemic keratoconjunctivitis	16	14	25	37	1.00
Bacterial meningitis			1		
Aseptic meningitis	1		1		
Mycoplasma pneumonia	16	27	17	17	0.68
Chlamydial pneumonia (excluding psittacosis)			1		
Influenza-Associated Hospitalizations	13	9	7	1	0.04

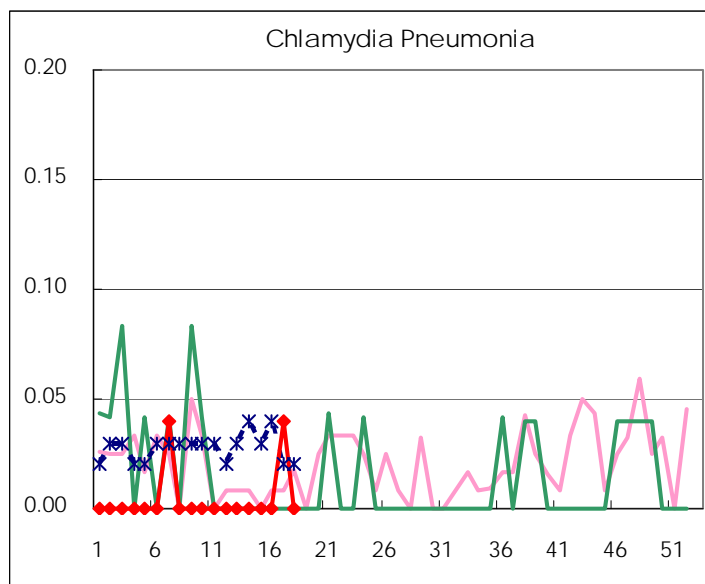
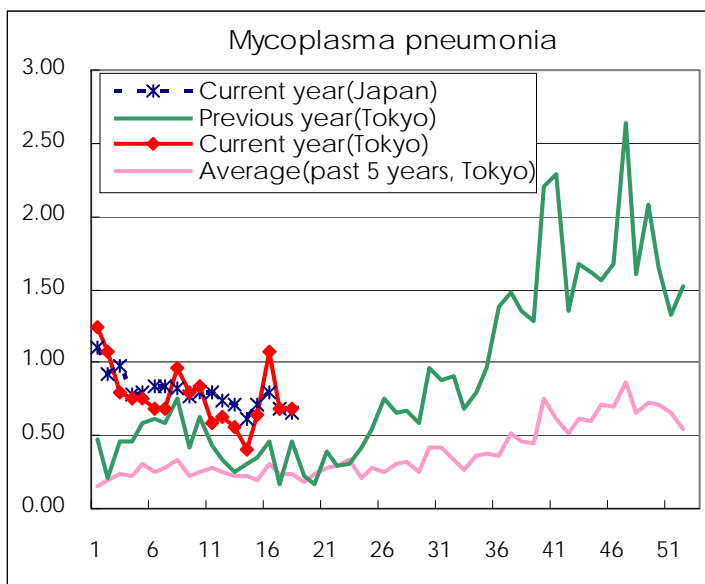
(Blank means 0.)

Disease Trend Graph (weekly reported cases per sentinel in comparison)









Number of sentinel facilities for weekly reporting		
Types of sentinels	Number of sentinels	Sentinels having reported
Pediatric	264	251
Influenza	419	401
Ophthalmic	39	37
Specially-designated	25	25

Tokyo Metropolitan Government
Infectious Disease Surveillance Center