

---

INFECTIOUS DISEASES WEEKLY REPORT

# TOKYO IDWR

Tokyo Metropolitan Infectious Disease Surveillance Center

---

**17 May 2012 / Number 19**

## Surveillance System in Tokyo, Japan

The infectious diseases which all physicians must report

All physicians must report to health centers the incidence of the diseases which are shown at page one. Health centers electronically report the individual cases to Tokyo Metropolitan Infectious Disease Surveillance Center.

The infectious diseases required to be reported by the sentinels

The numbers of patients who visit the sentinel clinics or hospitals during a week are reported to health centers in Tokyo. And they electronically report the numbers to Tokyo Metropolitan Infectious Disease Surveillance Center. We have about 500 sentinel clinics and hospitals in Tokyo.

1st Week is early January and 52nd Week is end of December.

Tokyo Metropolitan Institute of Public Health

TEL:81-3-3363-3213 FAX:81-3-5332-7365

e-mail:[idsc@tokyo-eiken.go.jp](mailto:idsc@tokyo-eiken.go.jp)

URL:[idsc.tokyo-eiken.go.jp/](http://idsc.tokyo-eiken.go.jp/)

---

## Number of patients with the diseases which all physicians must report

Category	Diseases	Tokyo				Japan		
		16th	17th	18th	19th	Cum 2012	19th	Cum 2012
I	Ebola hemorrhagic fever							
	Crimean-Congo hemorrhagic fever							
	Smallpox							
	South American hemorrhagic fever							
	Plague							
	Marburg disease							
	Lassa fever							
II	Acute poliomyelitis							
	Tuberculosis	83	103	60	74	1,600	384	9,945
	Diphtheria							
	Severe Acute Respiratory Syndrome(SARS)							
	Avian influenza H5N1							
III	Cholera							1
	Shigellosis		2	2	5	31	8	94
	Enterohemorrhagic Escherichia coli infection	3	1	3	2	21	23	264
	Typhoid fever					4	1	11
	Paratyphoid fever					4		9
IV	Hepatitis E	1			1	9	1	55
	West Nile fever							
	Hepatitis A	1				7	6	64
	Echinococcosis							5
	Yellow fever							
	Psittacosis							3
	Omsk hemorrhagic fever							
	Relapsing fever							
	Kyasanur forest disease							
	Q fever							
	Rabies							
	Coccidioidomycosis							1
	Monkeypox							
	Hemorrhagic fever with renal syndrome							
	Western equine encephalitis							
	Tick-borne encephalitis							
	Anthrax							
	Chikungunya fever							
	Scrub typhus(Tsutsugamushi disease)					1	13	79
	Dengue fever	1				12	1	47
	Eastern equine encephalitis							
	Avian influenza (excluding H5N1)							
	Nipah virus infection							
	Japanese spotted fever						2	7
	Japanese encephalitis							
	Hantavirus pulmonary syndrome							
	Herpes B virus infection							
	Glanders							
	Brucellosis							
	Venezuelan equine encephalitis							
	Hendra virus infection							
	Epidemic typhus							
Botulism							2	
Malaria	1		2		7	1	23	
Tularemia								
Lyme disease								
Lyssavirus infection(excluding rabies)								
Rift valley fever								
Melioidosis								
Legionellosis				2	16	15	220	
Leptospirosis					2		3	
Rocky mountain spotted fever								

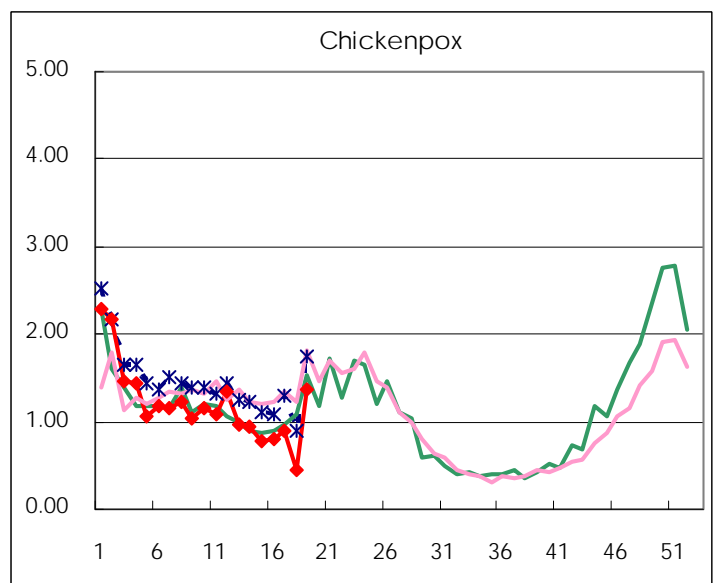
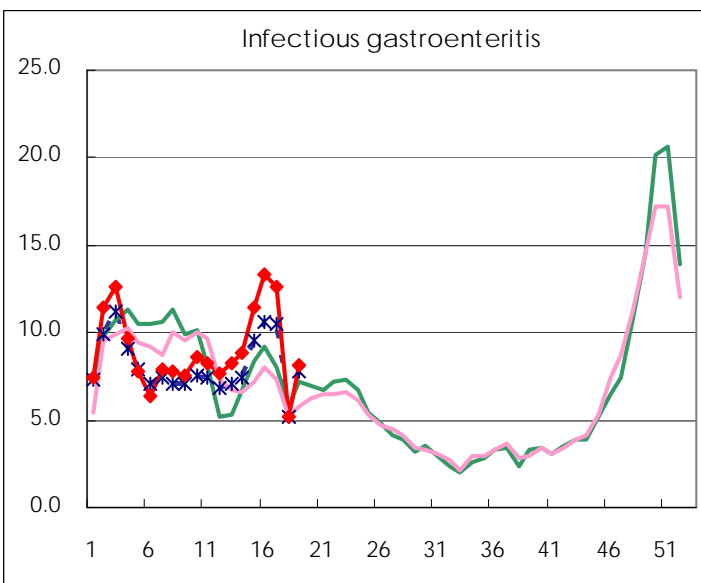
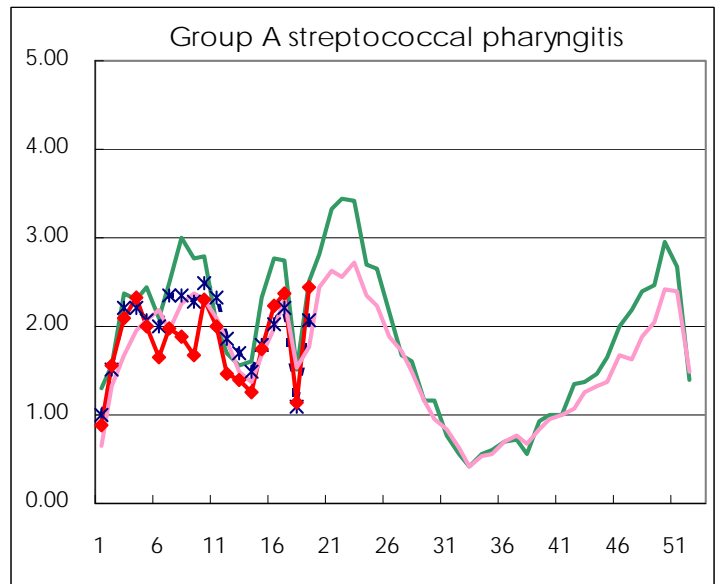
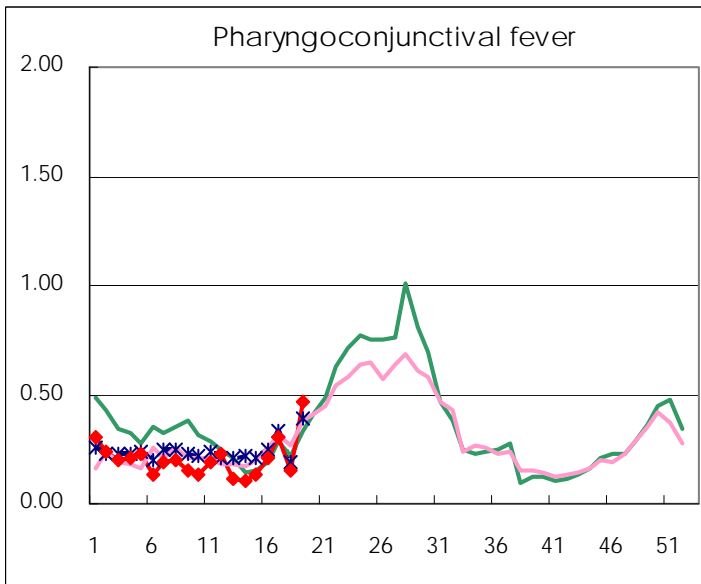
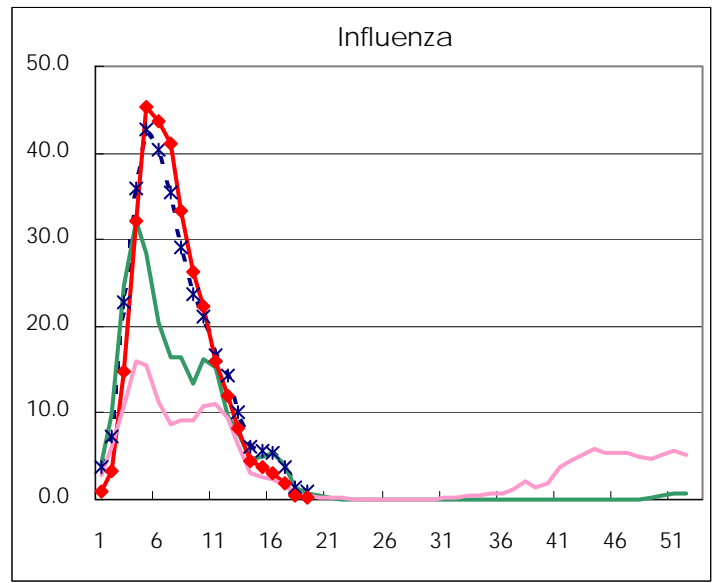
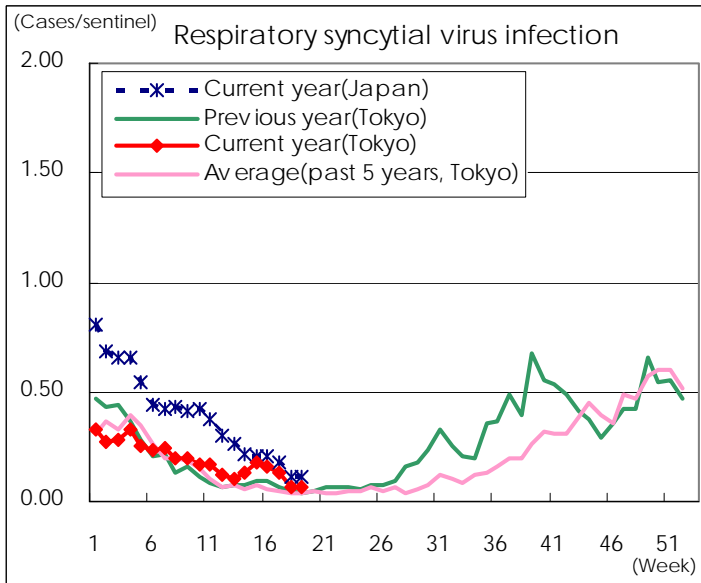
Category	Diseases	Tokyo				Japan		
		16th	17th	18th	19th	Cum 2012	19th	Cum 2012
V	Amebiasis	2	6	2	1	61	8	278
	Viral hepatitis(excluding hepatitis A and E)				1	16	2	74
	Acute encephalitis(excluding JE and WNE)				1	15	3	182
	Cryptosporidiosis	1				2		6
	Creutzfeldt-Jakob disease				1	6	4	62
	Severe invasive streptococcal infections(TSLS)					8	1	109
	Acquired immunodeficiency syndrome (AIDS)	8	9	3	8	150	12	452
	Giardiasis	1				4	1	16
	Meningococcal meningitis							6
	Congenital rubella syndrome							
	Syphilis	5	7	1	6	101	15	279
	Tetanus					1		28
	Vancomycin-resistant S. aureus infection							
	Vancomycin-resistant Enterococcus infection					4		26
	Rubella	1	3	2	3	26	10	168
Measles					17	4	113	

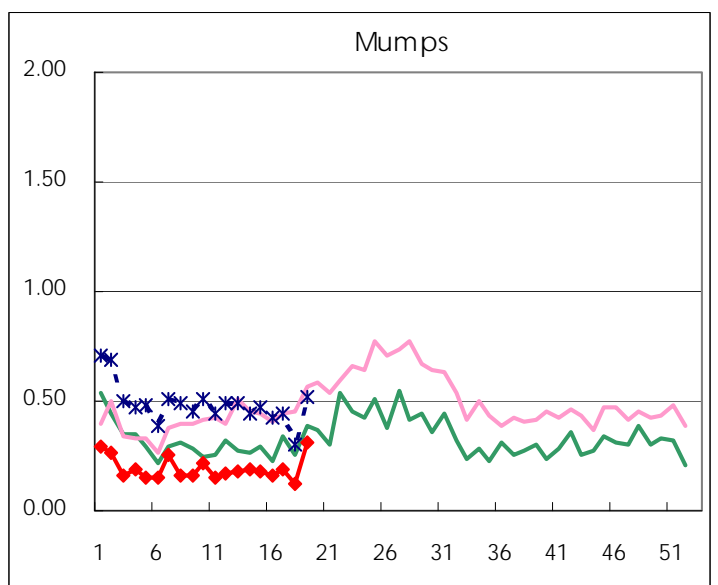
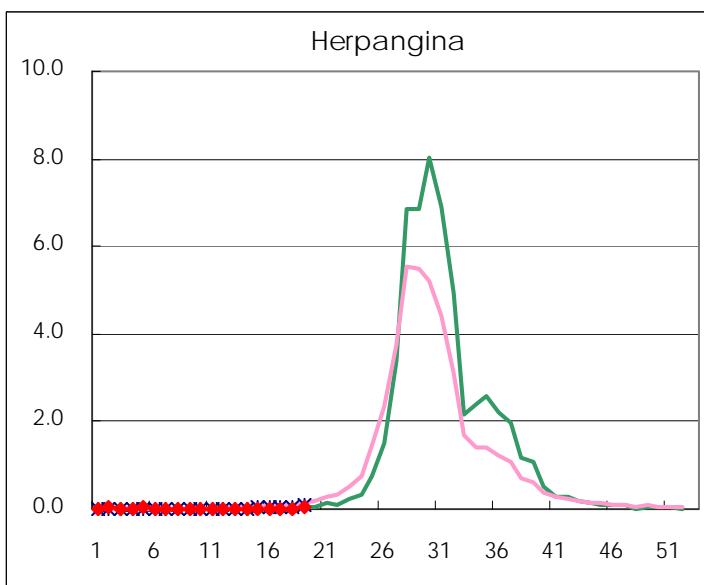
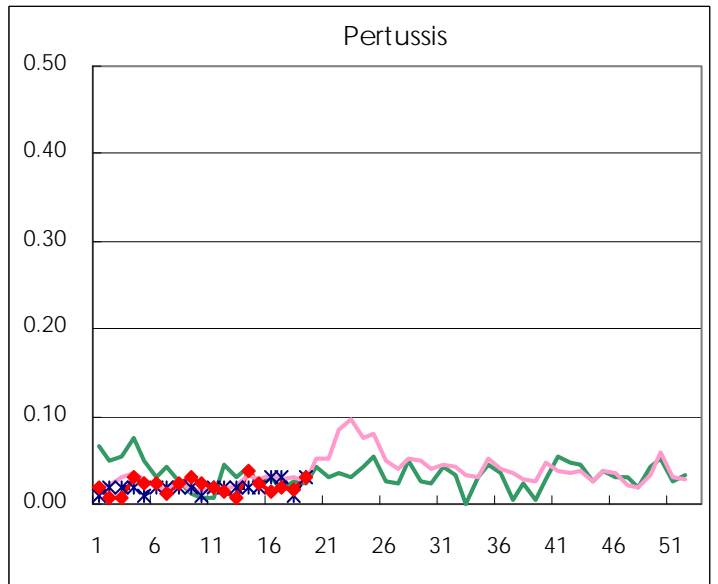
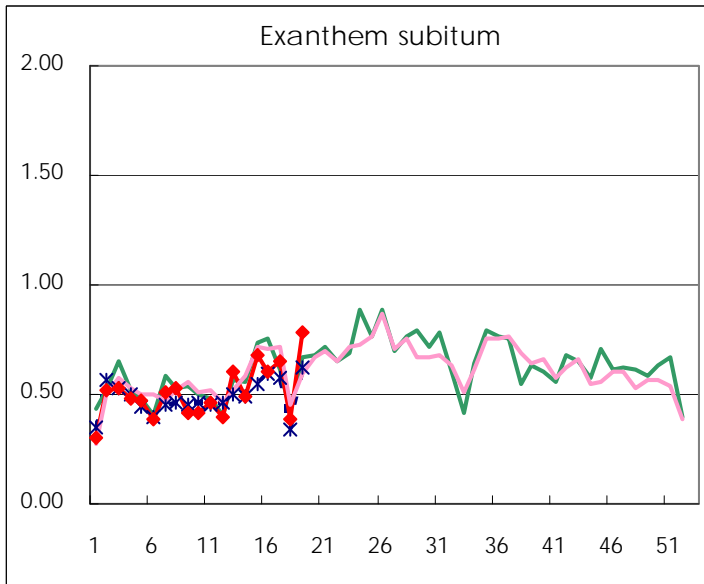
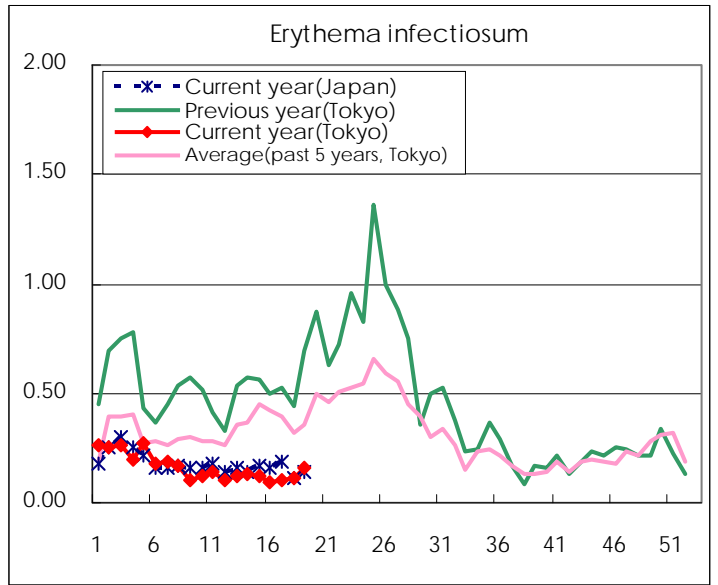
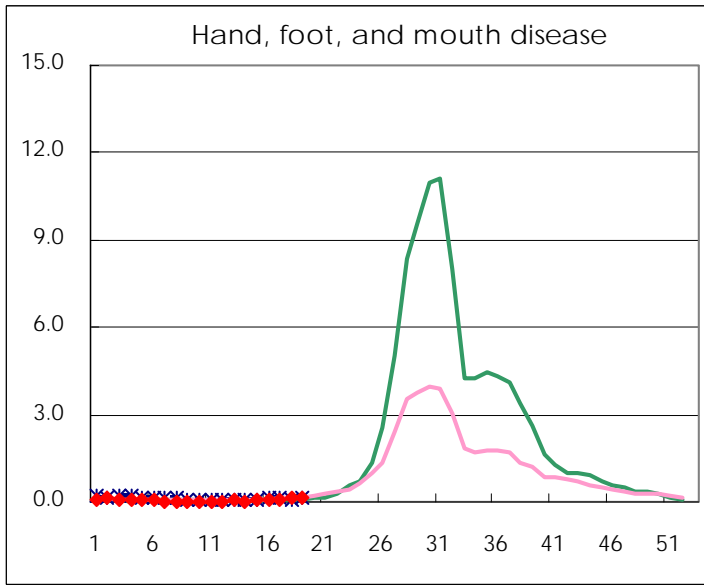
Number of patients with the diseases to be reported  
by the designated clinics and hospitals

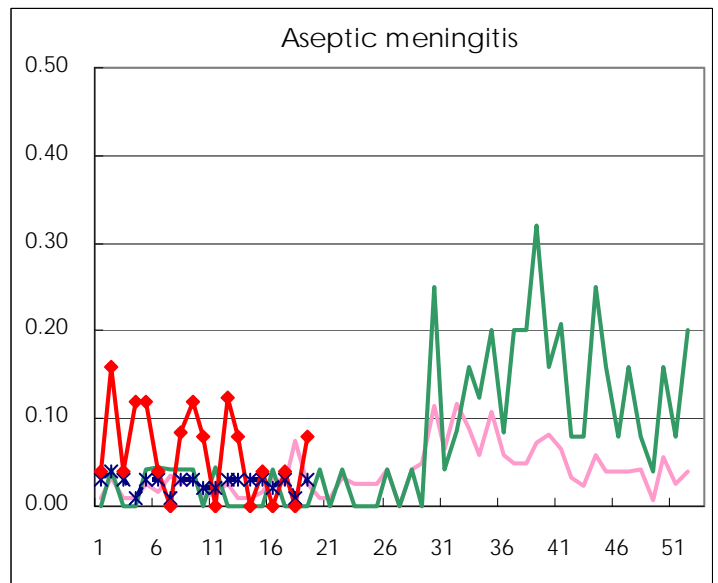
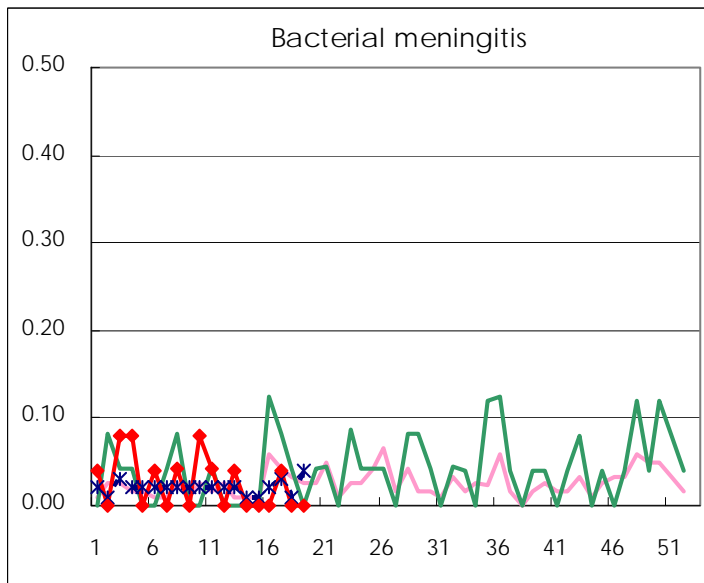
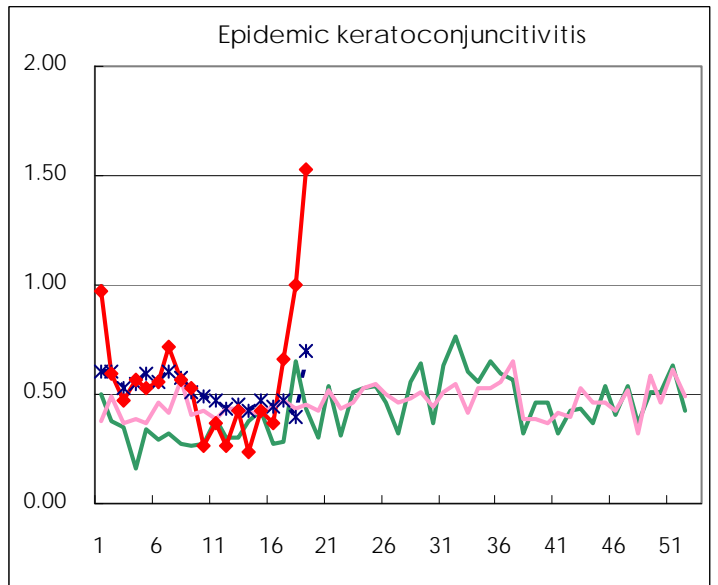
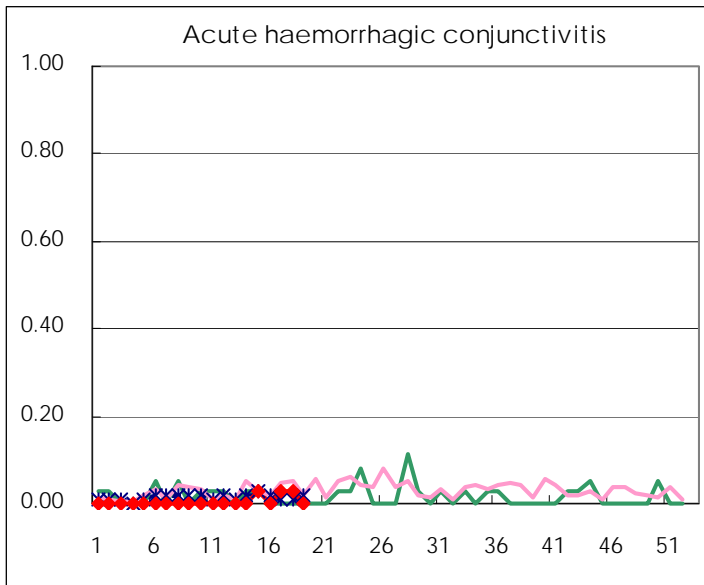
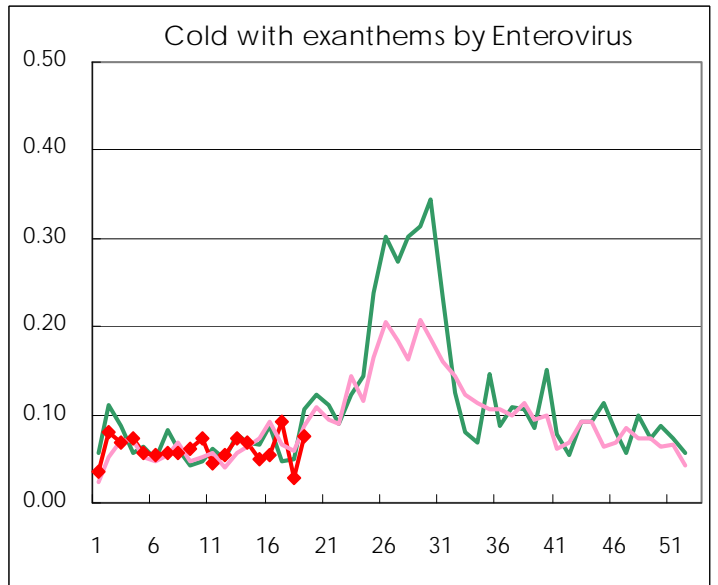
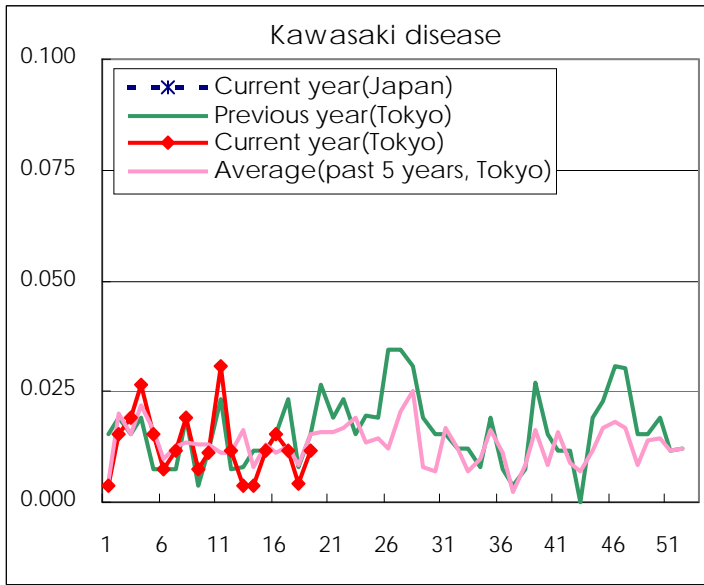
Diseases	Tokyo				
	16th	17th	18th	19th	/sentinel
Respiratory syncytial virus infection	43	35	17	18	0.07
Pharyngoconjunctival fever	55	78	39	123	0.47
Group A streptococcal pharyngitis	585	613	285	641	2.44
Infectious gastroenteritis	3,487	3,279	1,290	2,135	8.12
Chickenpox	212	235	114	358	1.36
Hand, foot, and mouth disease	11	22	28	31	0.12
Erythema infectiosum	24	27	28	41	0.16
Exanthem subitum	158	169	97	207	0.79
Pertussis	4	5	4	8	0.03
Herpangina	5	4	4	10	0.04
Mumps	42	50	31	82	0.31
Kawasaki disease	4	3	1	3	0.011
Cold with exanths by Enterovirus	14	24	7	20	0.08
Influenza	1,284	809	197	147	0.35
Acute hemorrhagic conjunctivitis		1	1		
Epidemic keratoconjunctivitis	14	25	37	58	1.53
Bacterial meningitis		1			
Aseptic meningitis		1		2	0.08
Mycoplasma pneumonia	27	17	17	14	0.56
Chlamydial pneumonia (excluding psittacosis)		1			
Influenza-Associated Hospitalizations	9	7	1	1	0.04

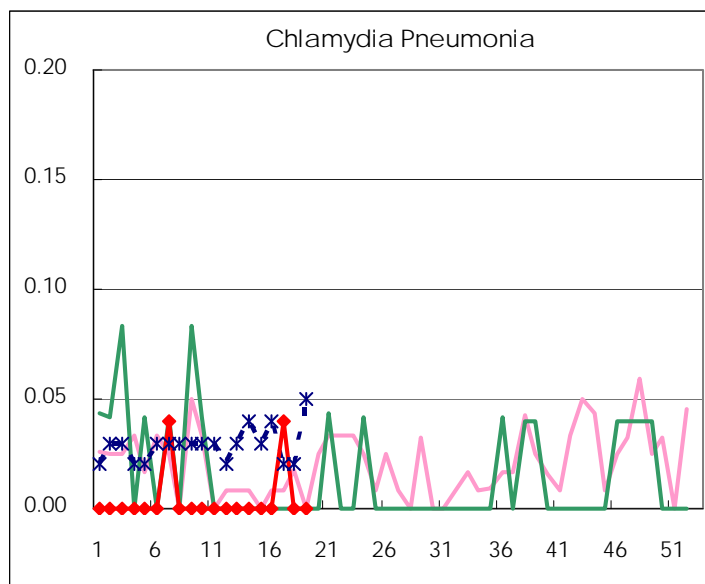
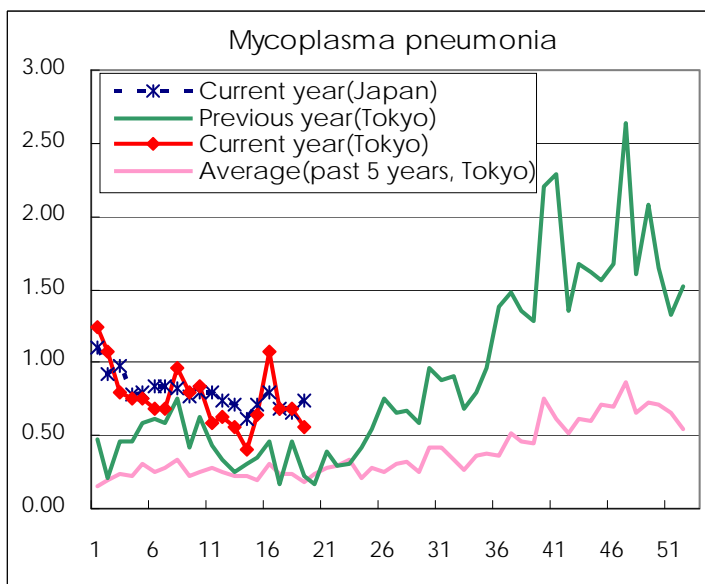
( Blank means 0. )

# Disease Trend Graph (weekly reported cases per sentinel in comparison)









Number of sentinel facilities for weekly reporting		
Types of sentinels	Number of sentinels	Sentinels having reported
Pediatric	264	263
Influenza	419	418
Ophthalmic	39	38
Specially-designated	25	25

Tokyo Metropolitan Government  
**Infectious Disease Surveillance Center**