
INFECTIOUS DISEASES WEEKLY REPORT

TOKYO IDWR

Tokyo Metropolitan Infectious Disease Surveillance Center

7 June 2012 / Number 22

Surveillance System in Tokyo, Japan

The infectious diseases which all physicians must report

All physicians must report to health centers the incidence of the diseases which are shown at page one. Health centers electronically report the individual cases to Tokyo Metropolitan Infectious Disease Surveillance Center.

The infectious diseases required to be reported by the sentinels

The numbers of patients who visit the sentinel clinics or hospitals during a week are reported to health centers in Tokyo. And they electronically report the numbers to Tokyo Metropolitan Infectious Disease Surveillance Center. We have about 500 sentinel clinics and hospitals in Tokyo.

1st Week is early January and 52nd Week is end of December.

Tokyo Metropolitan Institute of Public Health

TEL:81-3-3363-3213 FAX:81-3-5332-7365

e-mail:idsc@tokyo-eiken.go.jp

URL:idsc.tokyo-eiken.go.jp/

Number of patients with the diseases which all physicians must report

Category	Diseases	Tokyo				Japan		
		19th	20th	21st	22nd	Cum 2012	22nd	Cum 2012
I	Ebola hemorrhagic fever							
	Crimean-Congo hemorrhagic fever							
	Smallpox							
	South American hemorrhagic fever							
	Plague							
	Marburg disease							
	Lassa fever							
II	Acute poliomyelitis							
	Tuberculosis	93	86	75	84	1,867	429	11,802
	Diphtheria							
	Severe Acute Respiratory Syndrome(SARS)							
	Avian influenza H5N1							
III	Cholera							2
	Shigellosis	5			1	32	1	100
	Enterohemorrhagic Escherichia coli infection	3	4	3	1	30	82	432
	Typhoid fever		1			5		12
	Paratyphoid fever					4		9
IV	Hepatitis E	1				9	1	61
	West Nile fever							
	Hepatitis A		4	3		14	4	87
	Echinococcosis							5
	Yellow fever							
	Psittacosis						1	4
	Omsk hemorrhagic fever							
	Relapsing fever							
	Kyasanur forest disease							
	Q fever							
	Rabies							
	Coccidioidomycosis							1
	Monkeypox							
	Hemorrhagic fever with renal syndrome							
	Western equine encephalitis							
	Tick-borne encephalitis							
	Anthrax							
	Chikungunya fever							
	Scrub typhus(Tsutsugamushi disease)					1	15	129
	Dengue fever			2		14	1	54
	Eastern equine encephalitis							
	Avian influenza (excluding H5N1)							
	Nipah virus infection							
	Japanese spotted fever						2	17
	Japanese encephalitis							
	Hantavirus pulmonary syndrome							
	Herpes B virus infection							
	Glanders							
	Brucellosis							
	Venezuelan equine encephalitis							
	Hendra virus infection							
	Epidemic typhus							
Botulism							2	
Malaria			1		8		28	
Tularemia								
Lyme disease						1	2	
Lyssavirus infection(excluding rabies)								
Rift valley fever								
Melioidosis								
Legionellosis	2	2	4		22	22	280	
Leptospirosis			1		3	1	5	
Rocky mountain spotted fever								

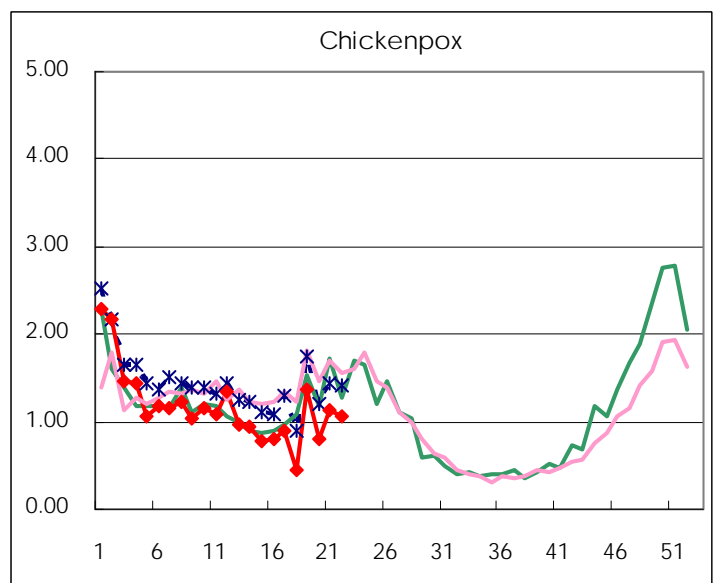
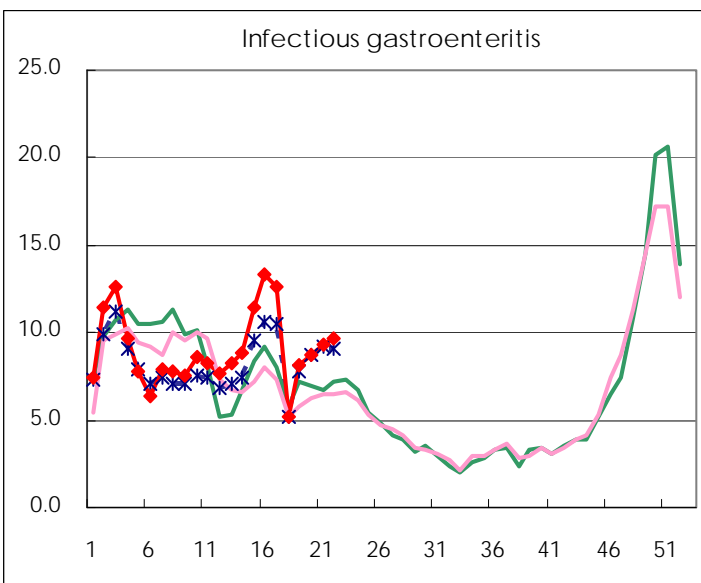
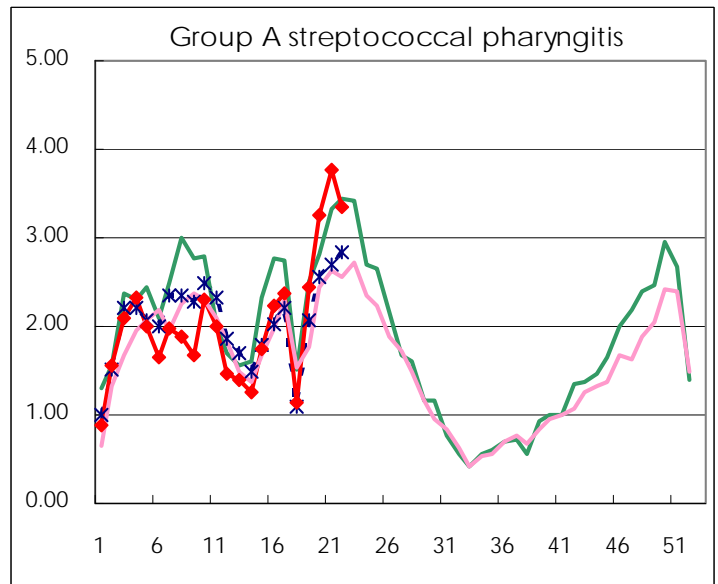
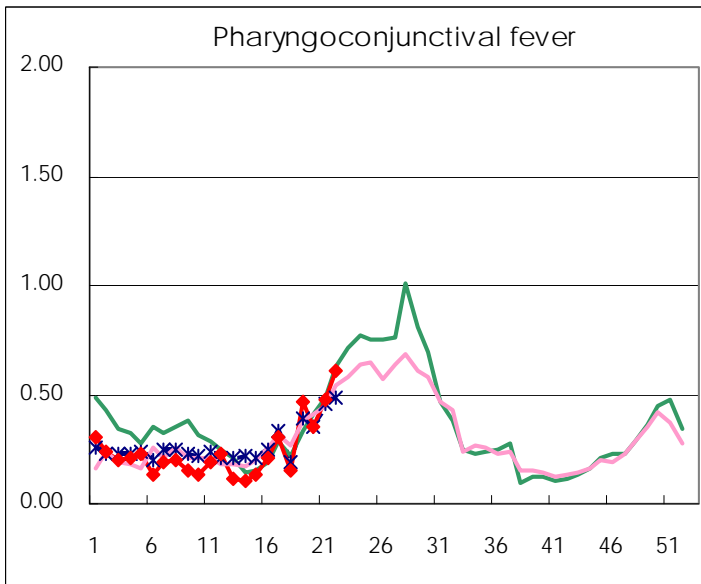
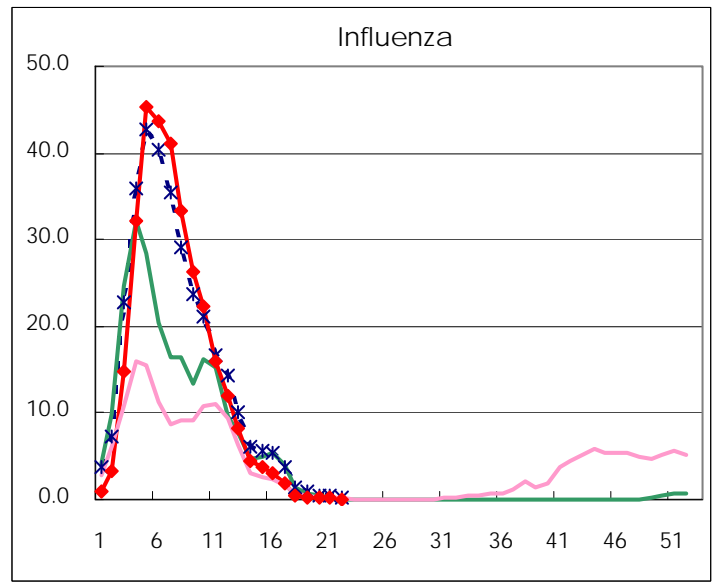
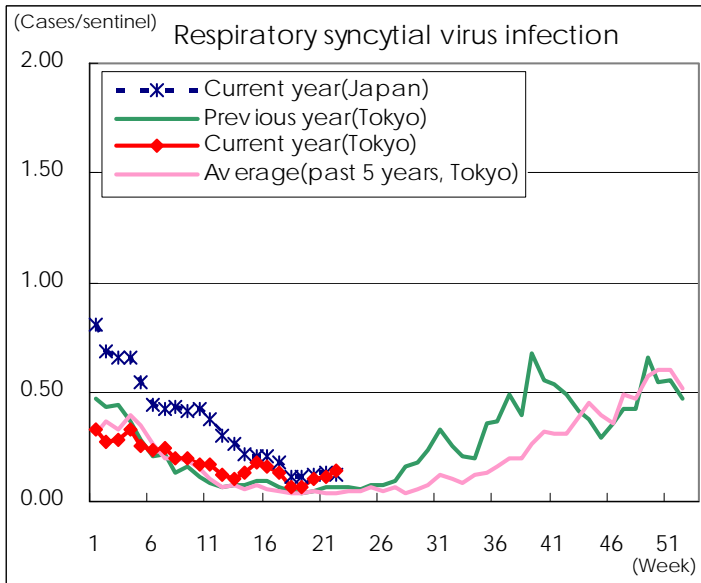
Category	Diseases	Tokyo				Japan		
		19th	20th	21st	22nd	Cum 2012	22nd	Cum 2012
V	Amebiasis	1	8	1	5	75	12	342
	Viral hepatitis(excluding hepatitis A and E)	1	2	1		19	3	89
	Acute encephalitis(excluding JE and WNE)	1	1	1		17	2	196
	Cryptosporidiosis					2		6
	Creutzfeldt-Jakob disease	1				6		73
	Severe invasive streptococcal infections(TSLS)					8	4	121
	Acquired immunodeficiency syndrome (AIDS)	8	4	10	11	175	21	542
	Giardiasis		2		1	7	1	22
	Meningococcal meningitis							6
	Congenital rubella syndrome							
	Syphilis	6	6	8	10	125	15	341
	Tetanus					1	1	36
	Vancomycin-resistant S. aureus infection							
	Vancomycin-resistant Enterococcus infection		1			5	2	33
	Rubella	4	3		2	32	35	266
	Measles		1	1		19	8	133

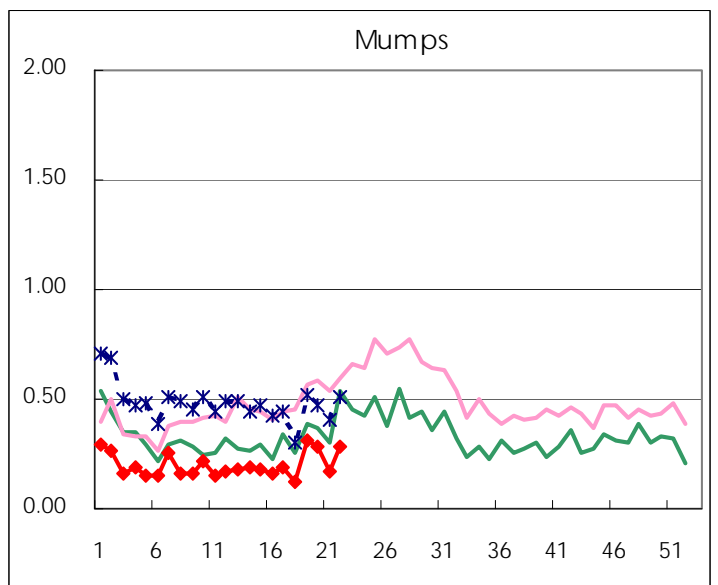
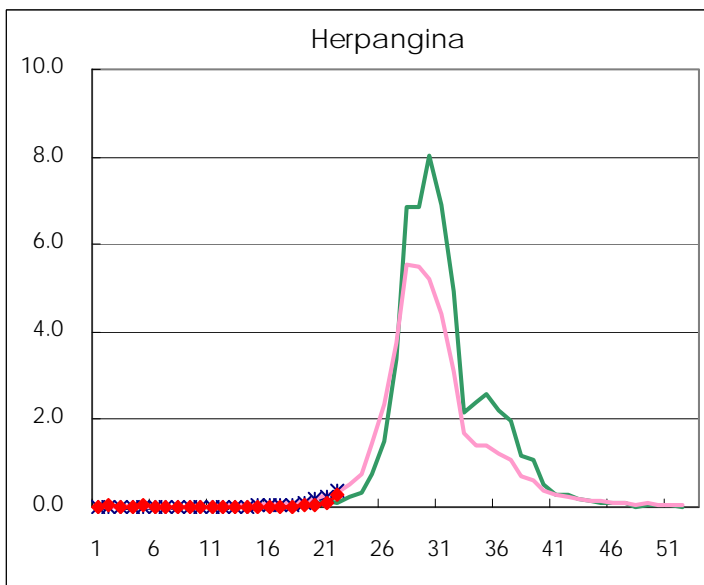
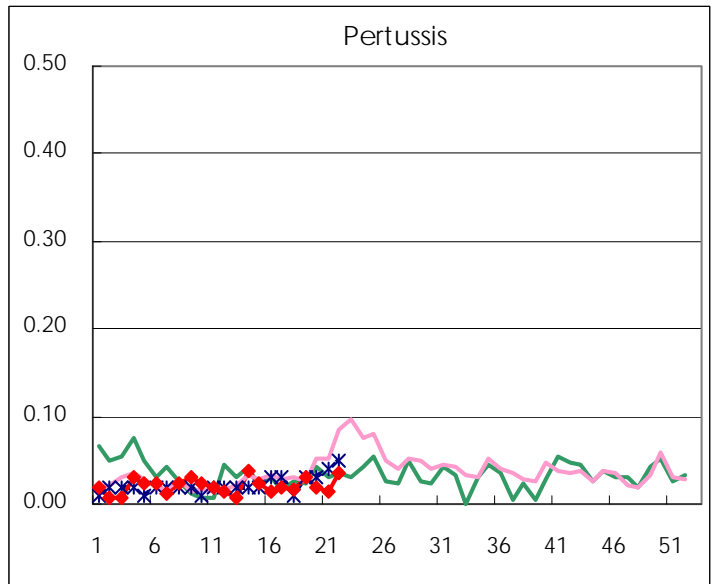
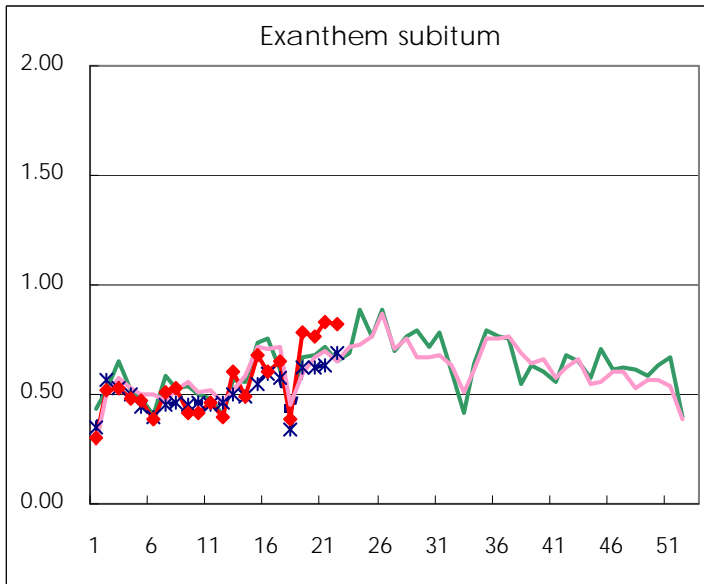
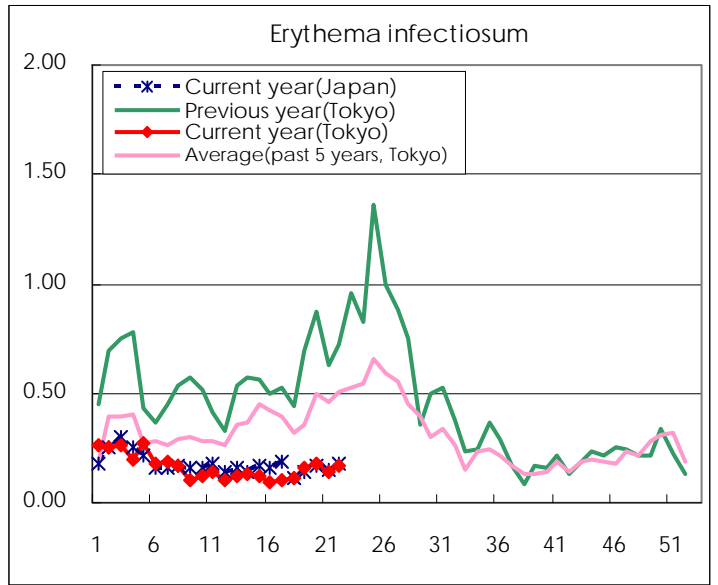
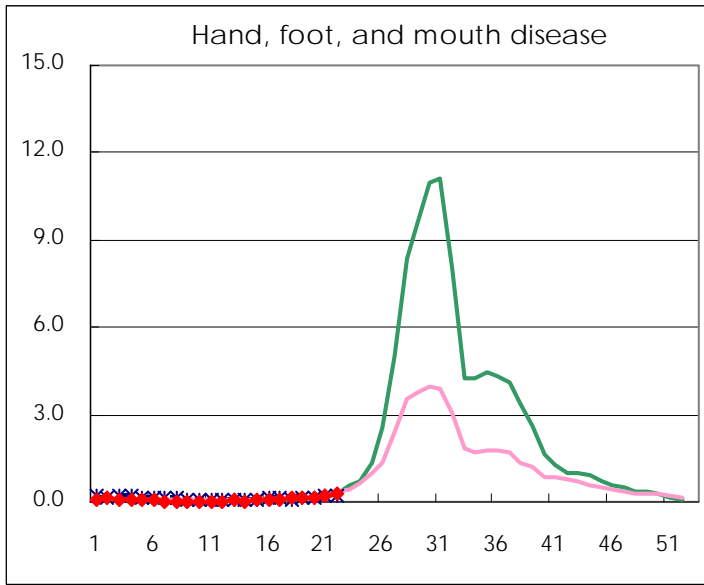
Number of patients with the diseases to be reported
by the designated clinics and hospitals

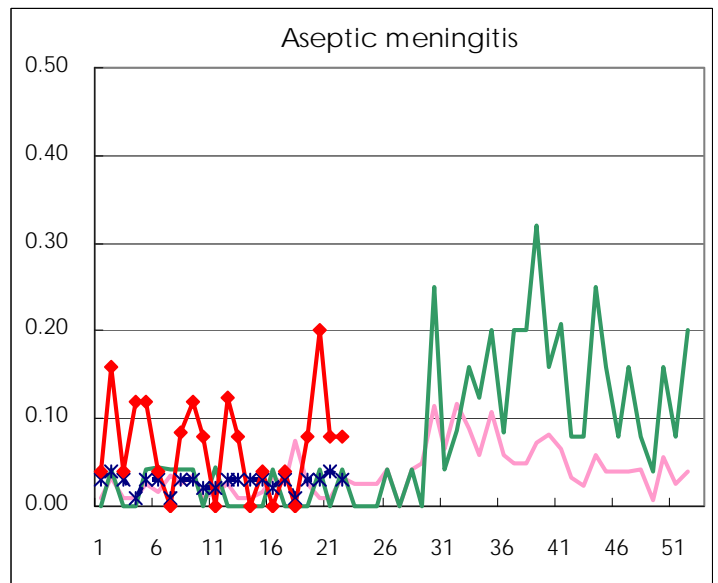
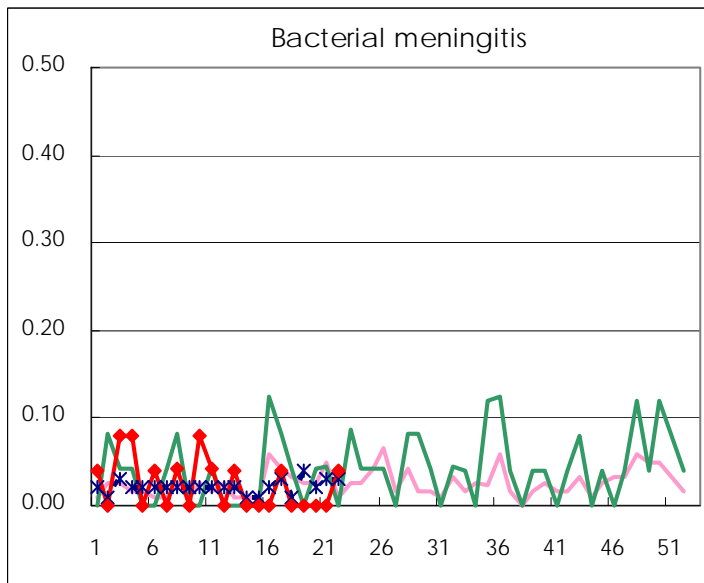
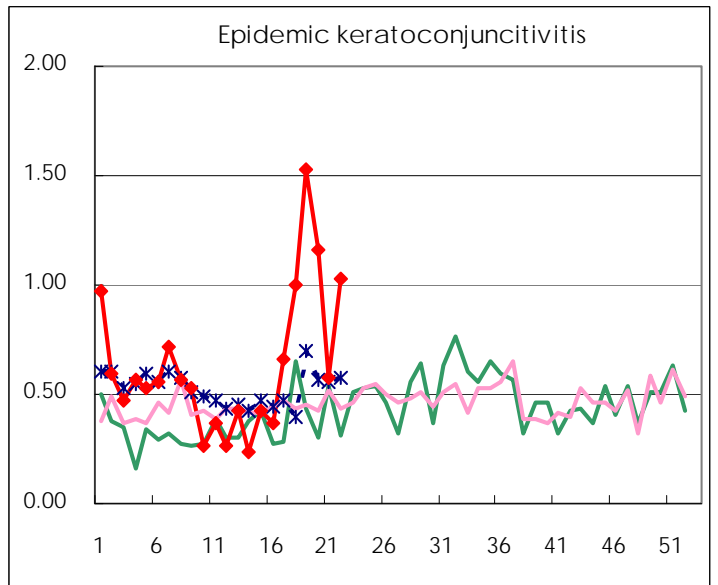
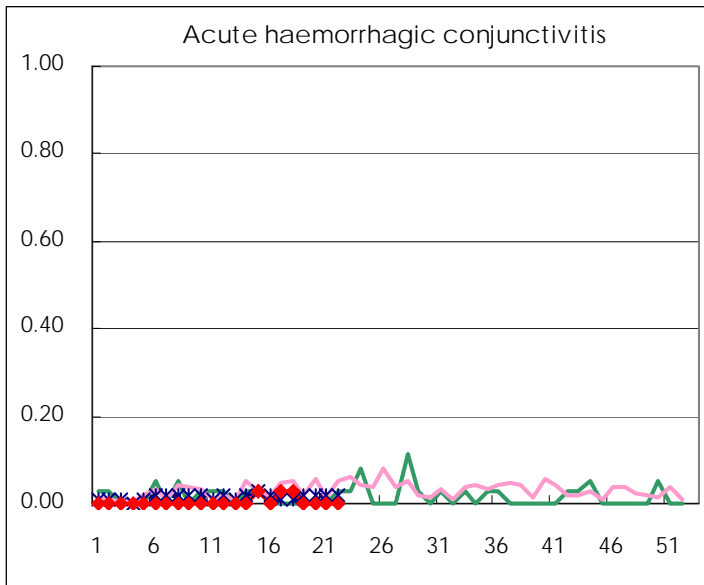
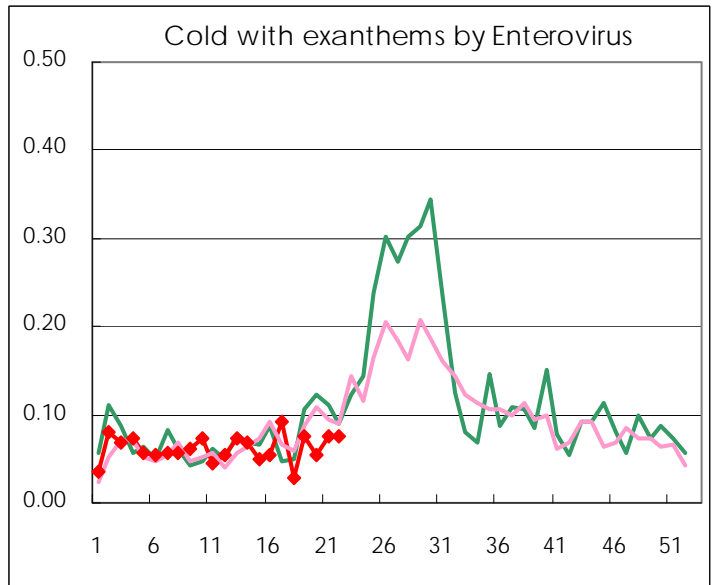
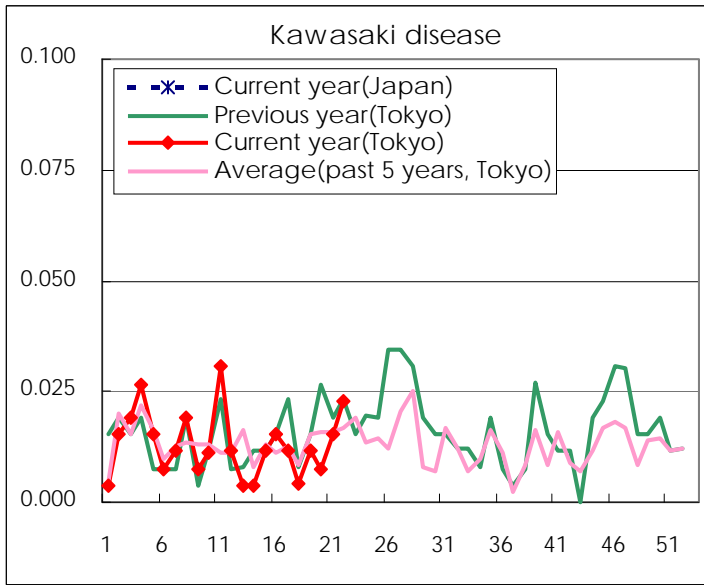
Diseases	Tokyo				
	19th	20th	21st	22nd	/sentinel
Respiratory syncytial virus infection	18	26	30	37	0.14
Pharyngoconjunctival fever	123	93	125	158	0.61
Group A streptococcal pharyngitis	641	848	982	872	3.34
Infectious gastroenteritis	2,135	2,281	2,438	2,537	9.72
Chickenpox	358	209	298	280	1.07
Hand, foot, and mouth disease	31	29	62	81	0.31
Erythema infectiosum	41	47	37	43	0.16
Exanthem subitum	207	200	217	213	0.82
Pertussis	8	5	4	9	0.03
Herpangina	10	16	26	69	0.26
Mumps	82	75	44	75	0.29
Kawasaki disease	3	2	4	6	0.02
Cold with exanths by Enterovirus	20	14	20	20	0.08
Influenza	147	91	57	41	0.10
Acute hemorrhagic conjunctivitis					
Epidemic keratoconjunctivitis	58	44	22	39	1.03
Bacterial meningitis				1	0.04
Aseptic meningitis	2	5	2	2	0.08
Mycoplasma pneumonia	14	15	23	15	0.60
Chlamydial pneumonia (excluding psittacosis)				1	0.04
Influenza-Associated Hospitalizations	1	1		1	0.04

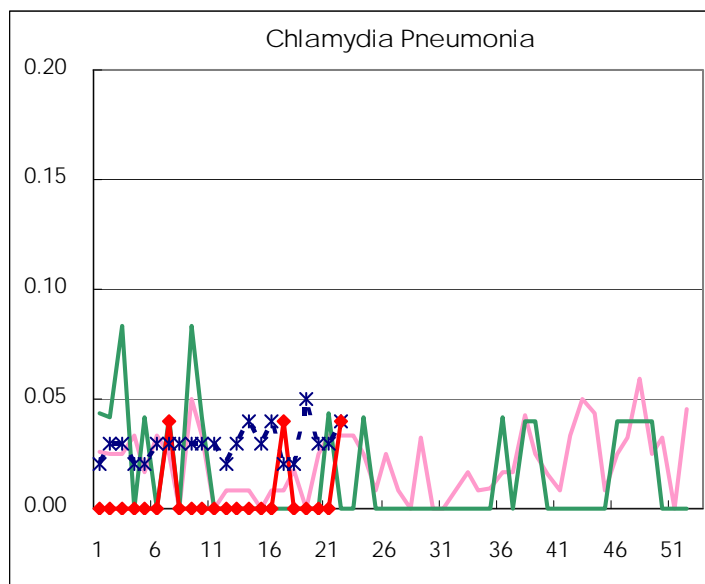
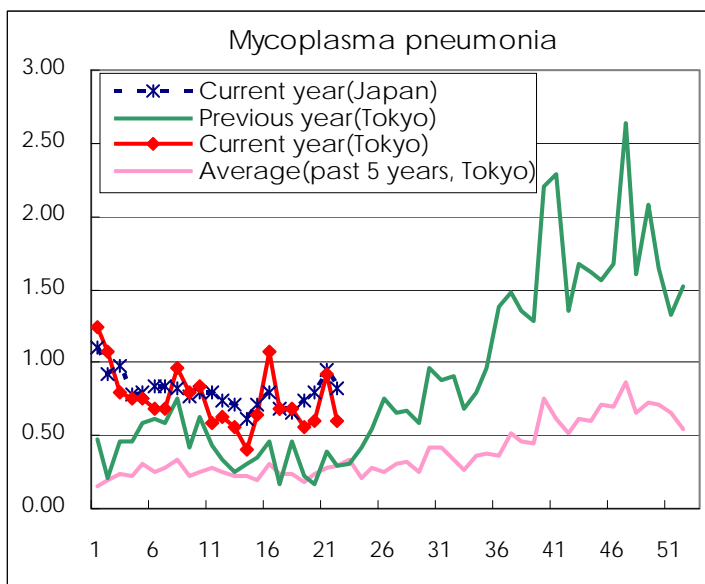
(Blank means 0.)

Disease Trend Graph (weekly reported cases per sentinel in comparison)









Number of sentinel facilities for weekly reporting		
Types of sentinels	Number of sentinels	Sentinels having reported
Pediatric	264	261
Influenza	419	415
Ophthalmic	39	38
Specially-designated	25	25

Tokyo Metropolitan Government
Infectious Disease Surveillance Center