
INFECTIOUS DISEASES WEEKLY REPORT

TOKYO IDWR

Tokyo Metropolitan Infectious Disease Surveillance Center

14 June 2012 / Number 23

Surveillance System in Tokyo, Japan

The infectious diseases which all physicians must report

All physicians must report to health centers the incidence of the diseases which are shown at page one. Health centers electronically report the individual cases to Tokyo Metropolitan Infectious Disease Surveillance Center.

The infectious diseases required to be reported by the sentinels

The numbers of patients who visit the sentinel clinics or hospitals during a week are reported to health centers in Tokyo. And they electronically report the numbers to Tokyo Metropolitan Infectious Disease Surveillance Center. We have about 500 sentinel clinics and hospitals in Tokyo.

1st Week is early January and 52nd Week is end of December.

Tokyo Metropolitan Institute of Public Health

TEL:81-3-3363-3213 FAX:81-3-5332-7365

e-mail:idsc@tokyo-eiken.go.jp

URL:idsc.tokyo-eiken.go.jp/

Number of patients with the diseases which all physicians must report

Category	Diseases	Tokyo				Japan		
		20th	21st	22nd	23rd	Cum 2012	23rd	Cum 2012
I	Ebola hemorrhagic fever							
	Crimean-Congo hemorrhagic fever							
	Smallpox							
	South American hemorrhagic fever							
	Plague							
	Marburg disease							
	Lassa fever							
II	Acute poliomyelitis							
	Tuberculosis	86	75	93	91	1,965	430	12,399
	Diphtheria							
	Severe Acute Respiratory Syndrome(SARS)							
	Avian influenza H5N1							
III	Cholera							2
	Shigellosis			1	1	33		101
	Enterohemorrhagic Escherichia coli infection	4	3	1	6	36	144	582
	Typhoid fever	1				5		12
	Paratyphoid fever					4		9
IV	Hepatitis E					9	2	64
	West Nile fever							
	Hepatitis A	4	3		3	17	2	91
	Echinococcosis							5
	Yellow fever							
	Psittacosis							4
	Omsk hemorrhagic fever							
	Relapsing fever							
	Kyasanur forest disease							
	Q fever							
	Rabies							
	Coccidioidomycosis							1
	Monkeypox							
	Hemorrhagic fever with renal syndrome							
	Western equine encephalitis							
	Tick-borne encephalitis							
	Anthrax							
	Chikungunya fever							
	Scrub typhus(Tsutsugamushi disease)					1	9	143
	Dengue fever		2		1	15	2	56
	Eastern equine encephalitis							
	Avian influenza (excluding H5N1)							
	Nipah virus infection							
	Japanese spotted fever						5	24
	Japanese encephalitis							
	Hantavirus pulmonary syndrome							
	Herpes B virus infection							
	Glanders							
	Brucellosis							
	Venezuelan equine encephalitis							
	Hendra virus infection							
	Epidemic typhus							
Botulism							2	
Malaria		1				8	28	
Tularemia								
Lyme disease							2	
Lyssavirus infection(excluding rabies)								
Rift valley fever								
Melioidosis								
Legionellosis	2	4		1	23	13	296	
Leptospirosis		1			3		5	
Rocky mountain spotted fever								

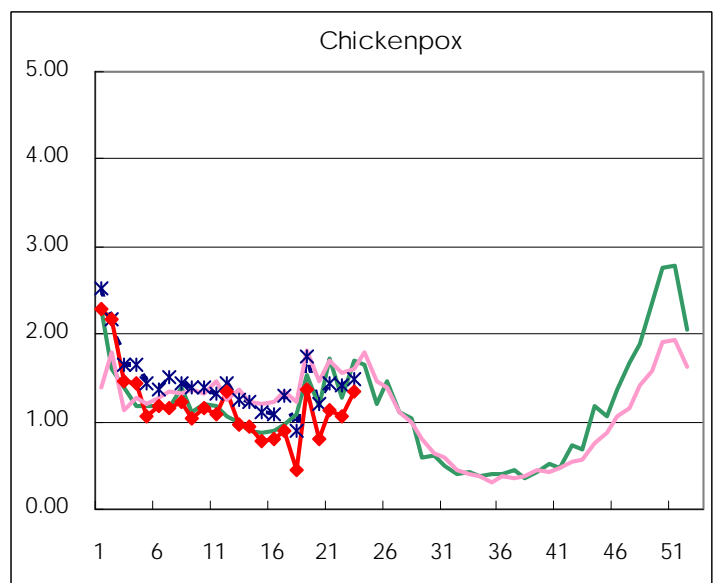
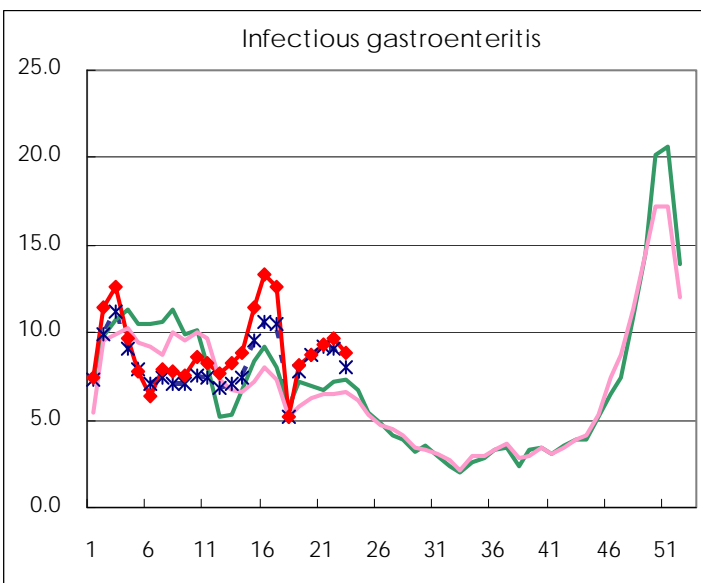
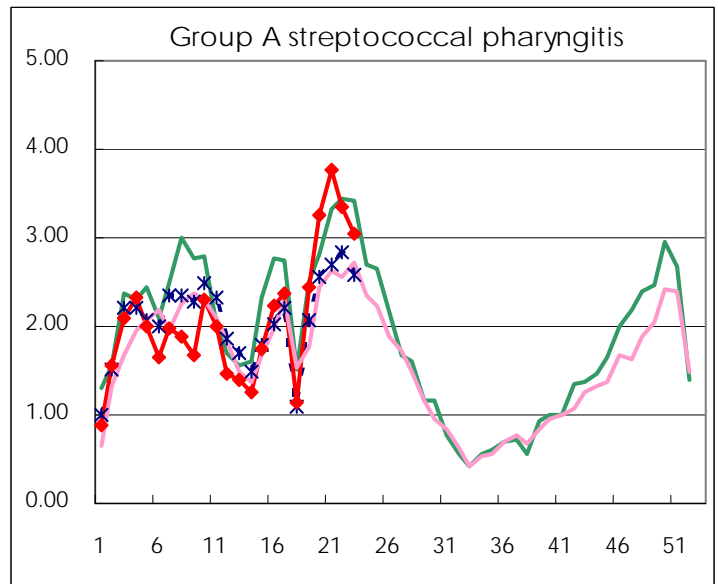
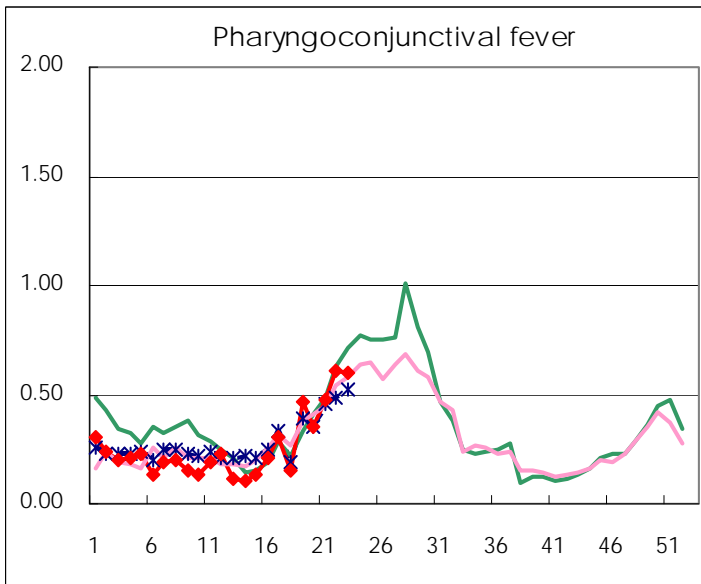
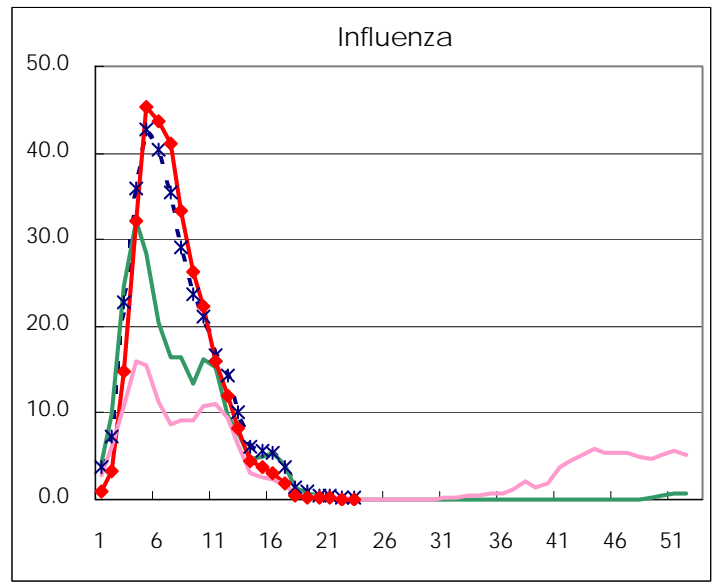
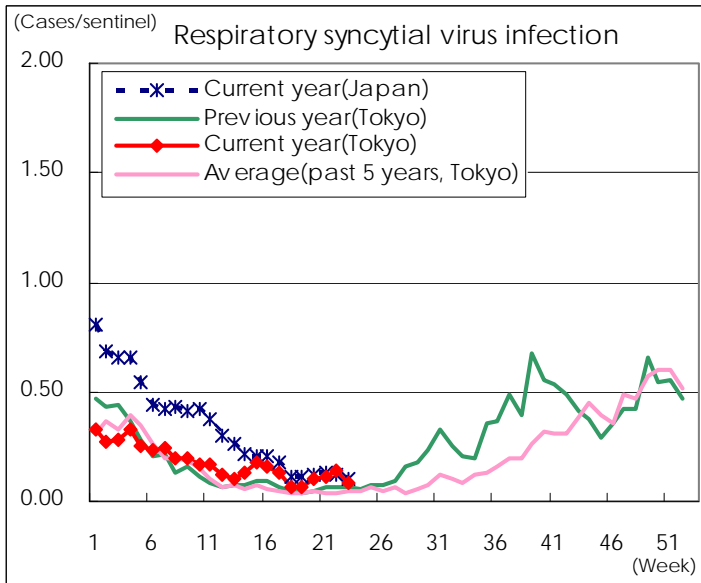
Category	Diseases	Tokyo				Japan		
		20th	21st	22nd	23rd	Cum 2012	23rd	Cum 2012
V	Amebiasis	8	1	5	2	77	12	354
	Viral hepatitis(excluding hepatitis A and E)	2	1		1	20	2	94
	Acute encephalitis(excluding JE and WNE)	1	1			16	3	205
	Cryptosporidiosis					2		6
	Creutzfeldt-Jakob disease					6	2	76
	Severe invasive streptococcal infections(TSLS)				2	10	2	129
	Acquired immunodeficiency syndrome (AIDS)	4	10	11	7	182	19	572
	Giardiasis	2		1		7	2	24
	Meningococcal meningitis							6
	Congenital rubella syndrome							
	Syphilis	6	8	10	4	129	9	352
	Tetanus				2	3	2	40
	Vancomycin-resistant S. aureus infection							
	Vancomycin-resistant Enterococcus infection	1				5	1	35
	Rubella	3		2	7	39	50	330
Measles	1	1	2	1	22	6	142	

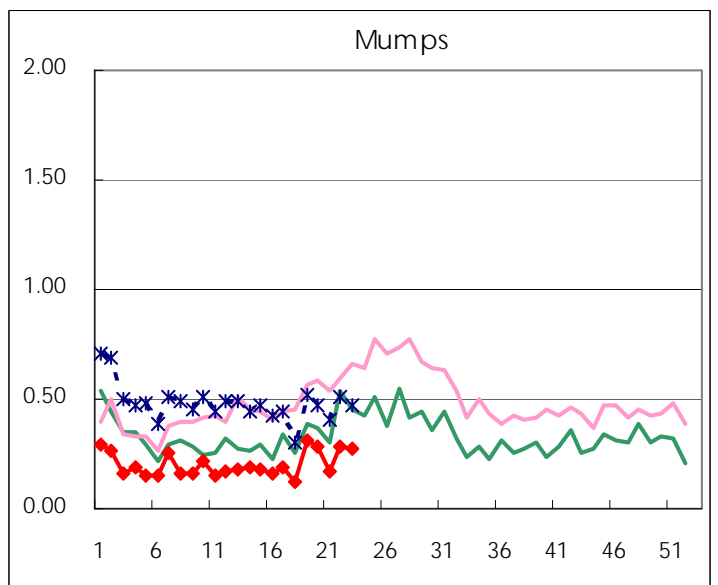
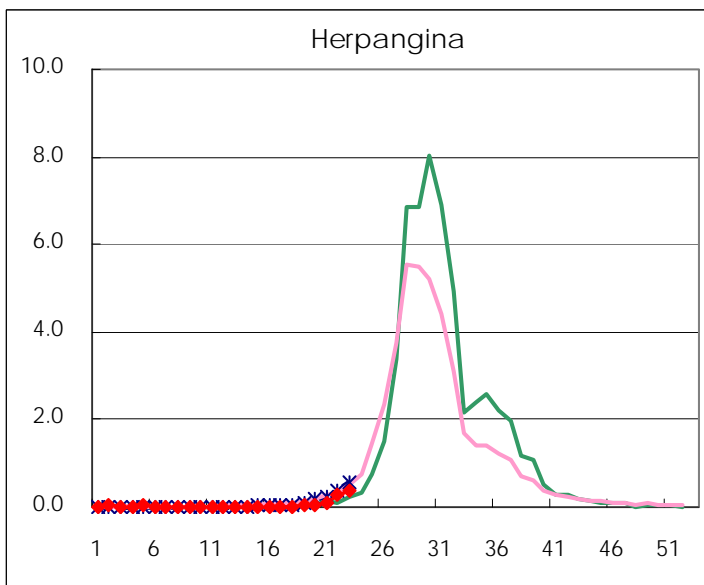
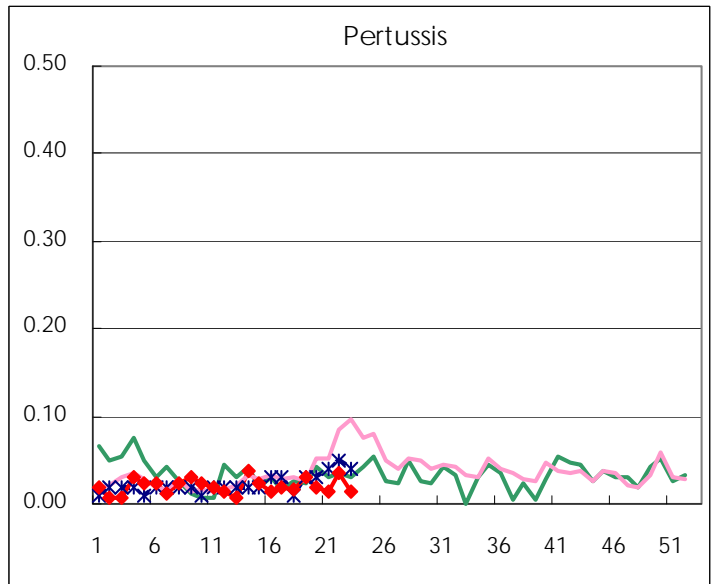
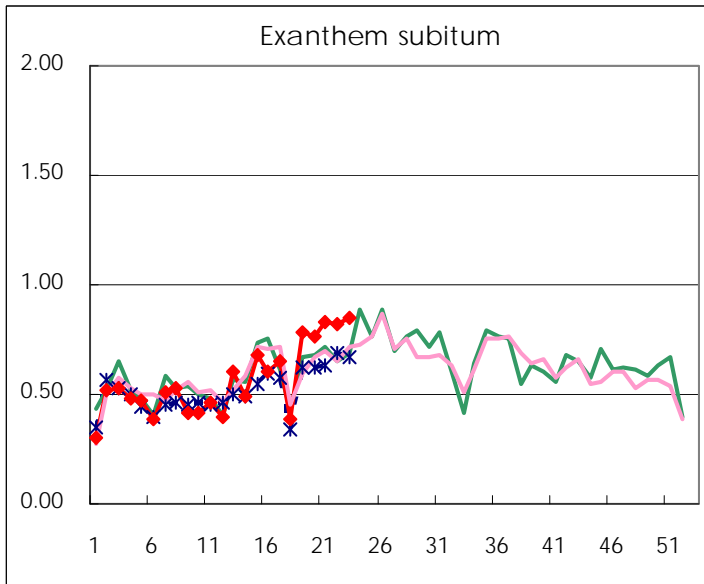
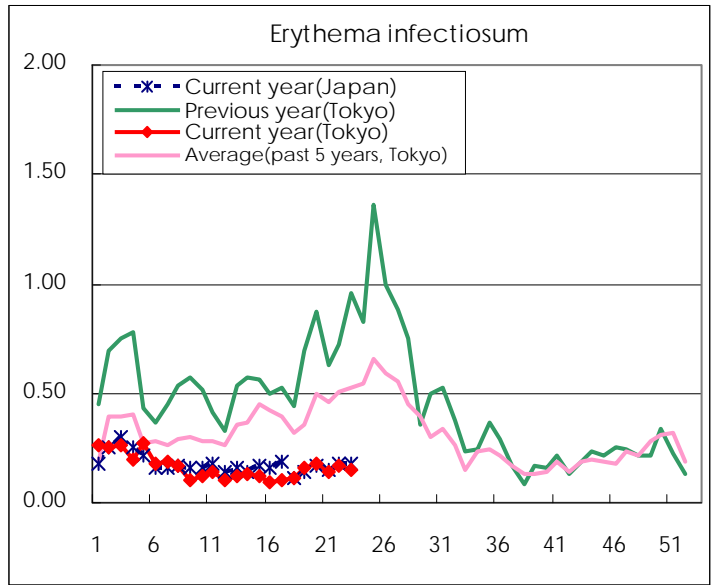
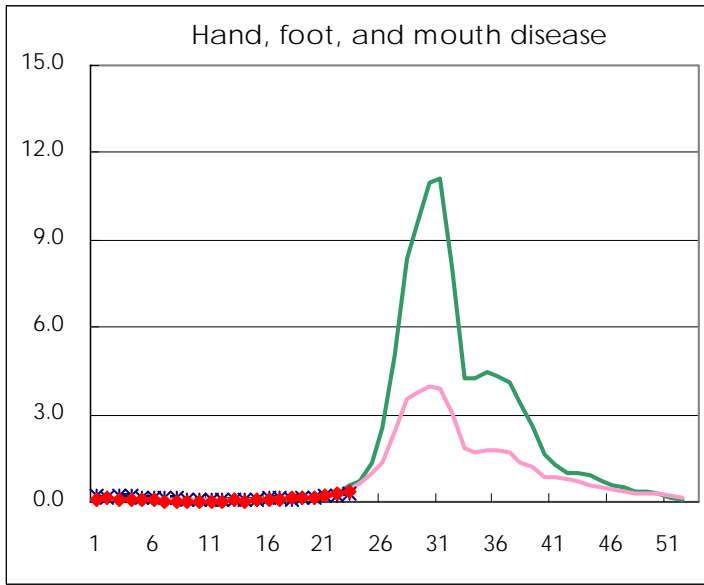
Number of patients with the diseases to be reported
by the designated clinics and hospitals

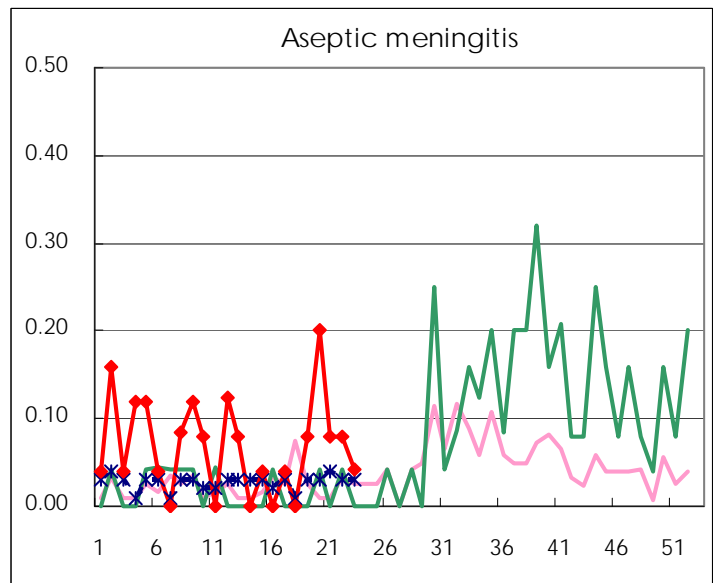
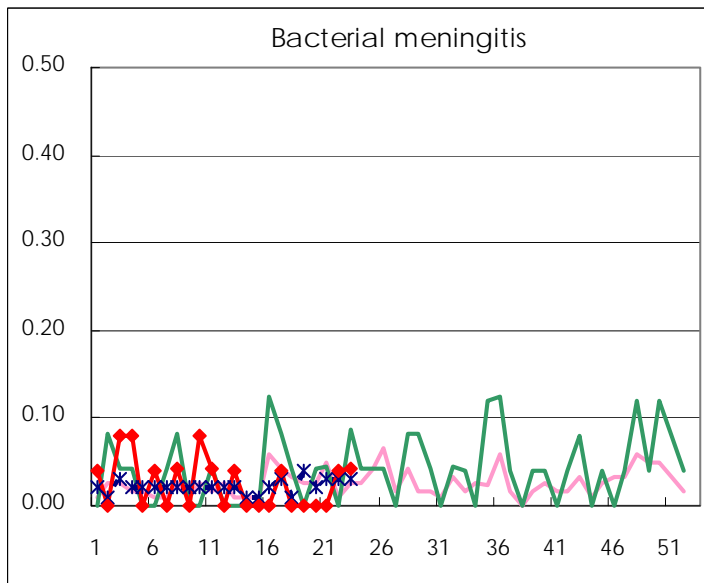
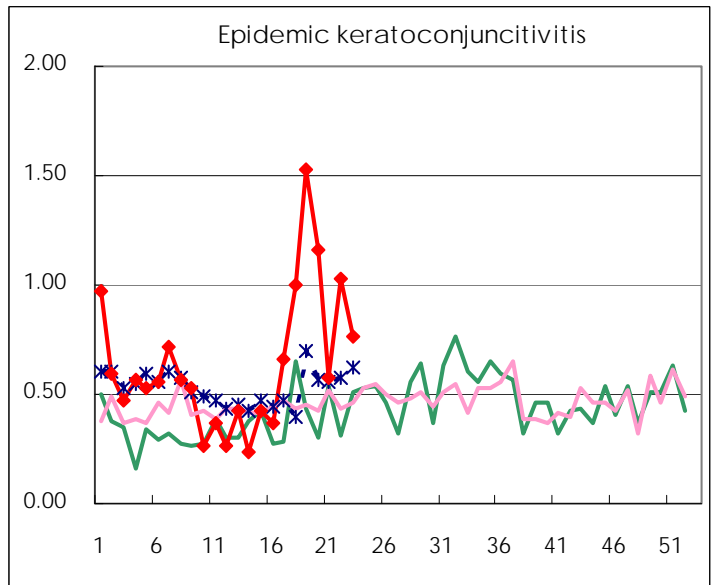
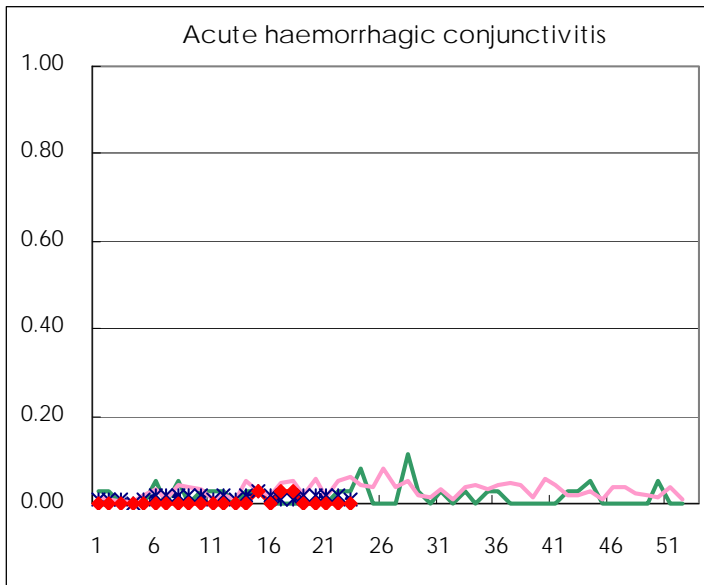
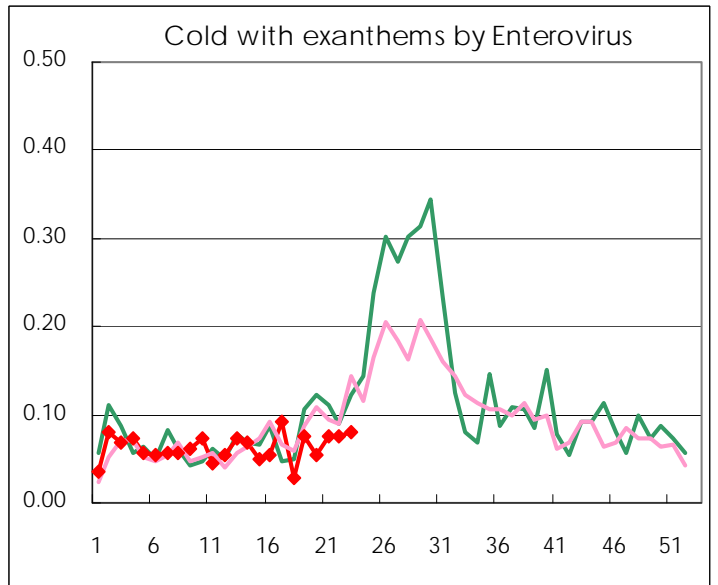
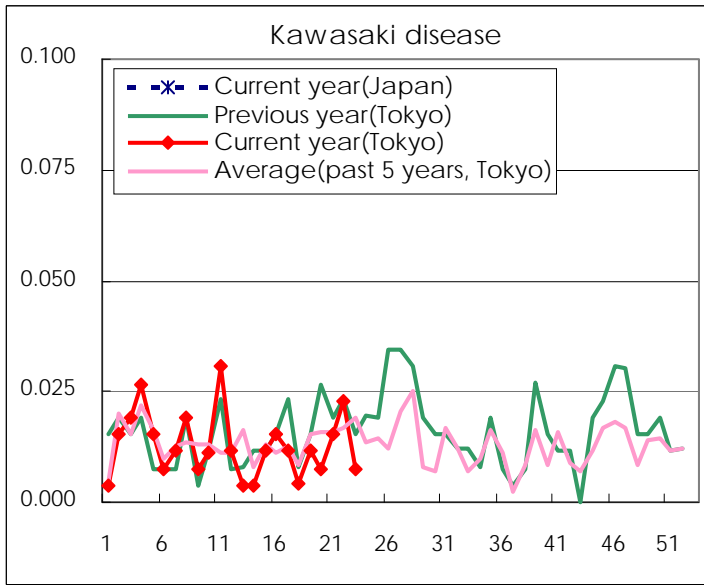
Diseases	Tokyo				
	20th	21st	22nd	23rd	/sentinel
Respiratory syncytial virus infection	26	30	37	22	0.08
Pharyngoconjunctival fever	93	125	158	157	0.60
Group A streptococcal pharyngitis	848	982	872	803	3.05
Infectious gastroenteritis	2,281	2,438	2,537	2,323	8.83
Chickenpox	209	298	280	353	1.34
Hand, foot, and mouth disease	29	62	81	90	0.34
Erythema infectiosum	47	37	43	40	0.15
Exanthem subitum	200	217	213	224	0.85
Pertussis	5	4	9	4	0.02
Herpangina	16	26	69	100	0.38
Mumps	75	44	75	71	0.27
Kawasaki disease	2	4	6	2	0.01
Cold with exanths by Enterovirus	14	20	20	21	0.08
Influenza	91	57	42	38	0.09
Acute hemorrhagic conjunctivitis					
Epidemic keratoconjunctivitis	44	22	39	29	0.76
Bacterial meningitis			1	1	0.04
Aseptic meningitis	5	2	2	1	0.04
Mycoplasma pneumonia	15	23	15	8	0.33
Chlamydial pneumonia (excluding psittacosis)			1		
Influenza-Associated Hospitalizations	1		1	2	0.08

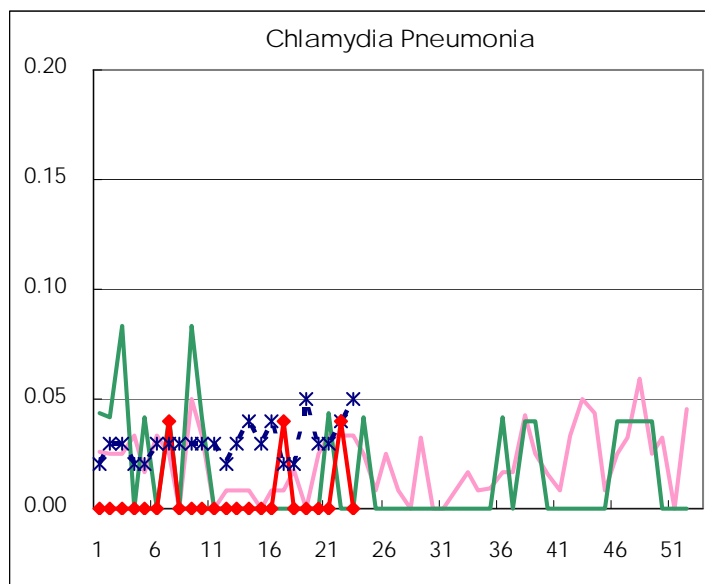
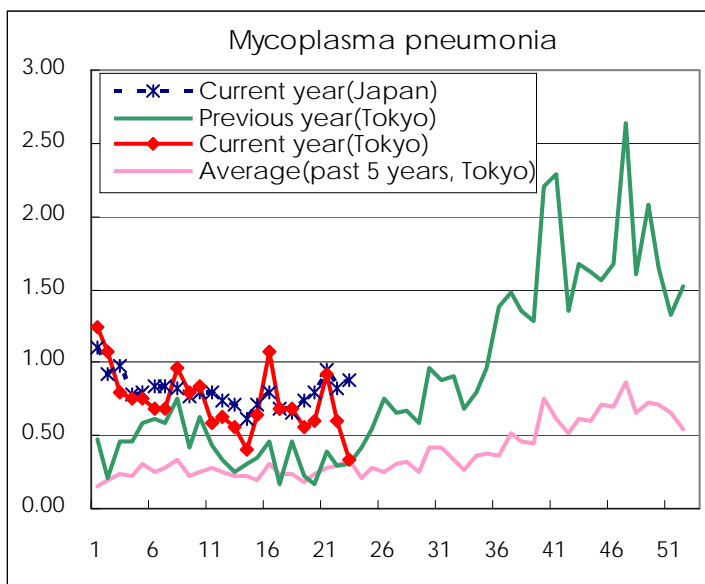
(Blank means 0.)

Disease Trend Graph (weekly reported cases per sentinel in comparison)









Number of sentinel facilities for weekly reporting		
Types of sentinels	Number of sentinels	Sentinels having reported
Pediatric	264	263
Influenza	419	418
Ophthalmic	39	38
Specially-designated	25	24

Tokyo Metropolitan Government
Infectious Disease Surveillance Center