
INFECTIOUS DISEASES WEEKLY REPORT

TOKYO IDWR

Tokyo Metropolitan Infectious Disease Surveillance Center

21 June 2012 / Number 24

Surveillance System in Tokyo, Japan

The infectious diseases which all physicians must report

All physicians must report to health centers the incidence of the diseases which are shown at page one. Health centers electronically report the individual cases to Tokyo Metropolitan Infectious Disease Surveillance Center.

The infectious diseases required to be reported by the sentinels

The numbers of patients who visit the sentinel clinics or hospitals during a week are reported to health centers in Tokyo. And they electronically report the numbers to Tokyo Metropolitan Infectious Disease Surveillance Center. We have about 500 sentinel clinics and hospitals in Tokyo.

1st Week is early January and 52nd Week is end of December.

Tokyo Metropolitan Institute of Public Health

TEL:81-3-3363-3213 FAX:81-3-5332-7365

e-mail:idsc@tokyo-eiken.go.jp

URL:idsc.tokyo-eiken.go.jp/

Number of patients with the diseases which all physicians must report

Category	Diseases	Tokyo				Japan		
		21st	22nd	23rd	24th	Cum 2012	24th	Cum 2012
I	Ebola hemorrhagic fever							
	Crimean-Congo hemorrhagic fever							
	Smallpox							
	South American hemorrhagic fever							
	Plague							
	Marburg disease							
	Lassa fever							
II	Acute poliomyelitis							
	Tuberculosis	75	96	103	71	2,051	406	13,064
	Diphtheria							
	Severe Acute Respiratory Syndrome(SARS)							
	Avian influenza H5N1							
III	Cholera							2
	Shigellosis		1	1		33		101
	Enterohemorrhagic Escherichia coli infection	3	1	6	5	41	92	685
	Typhoid fever					5		11
	Paratyphoid fever				1	5	1	10
IV	Hepatitis E					9	1	65
	West Nile fever							
	Hepatitis A	3		3	3	20	6	99
	Echinococcosis							5
	Yellow fever							
	Psittacosis							4
	Omsk hemorrhagic fever							
	Relapsing fever							
	Kyasanur forest disease							
	Q fever							
	Rabies							
	Coccidioidomycosis							1
	Monkeypox							
	Hemorrhagic fever with renal syndrome							
	Western equine encephalitis							
	Tick-borne encephalitis							
	Anthrax							
	Chikungunya fever							
	Scrub typhus(Tsutsugamushi disease)				1	2	10	155
	Dengue fever	2		1	1	16	2	58
	Eastern equine encephalitis							
	Avian influenza (excluding H5N1)							
	Nipah virus infection							
	Japanese spotted fever						4	28
	Japanese encephalitis							
	Hantavirus pulmonary syndrome							
	Herpes B virus infection							
	Glanders							
	Brucellosis							
	Venezuelan equine encephalitis							
	Hendra virus infection							
	Epidemic typhus							
Botulism							2	
Malaria	1				8	1	29	
Tularemia								
Lyme disease							2	
Lyssavirus infection(excluding rabies)								
Rift valley fever								
Melioidosis								
Legionellosis	4		1		23	12	311	
Leptospirosis	1				3		5	
Rocky mountain spotted fever								

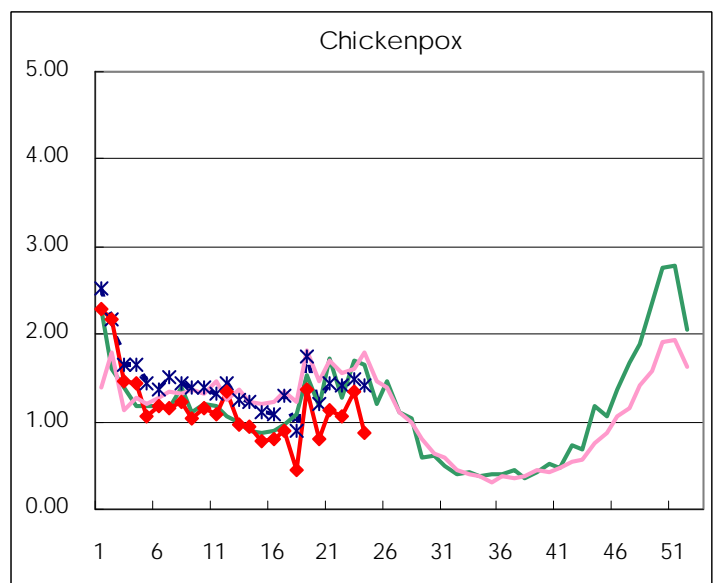
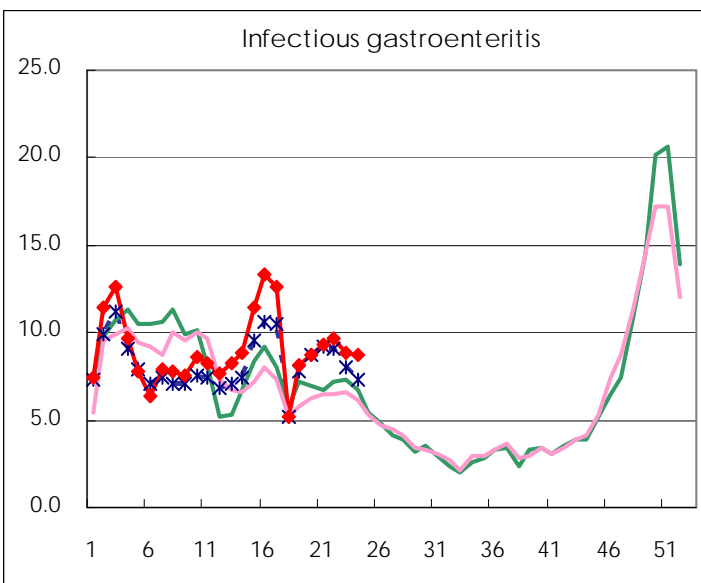
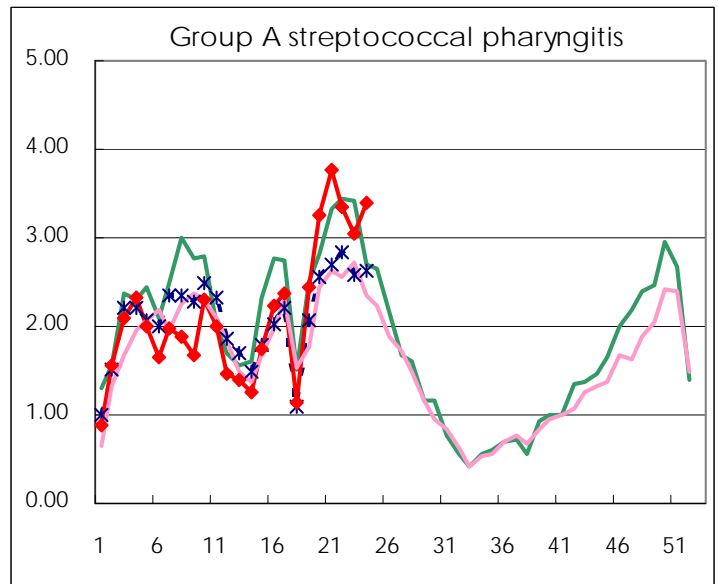
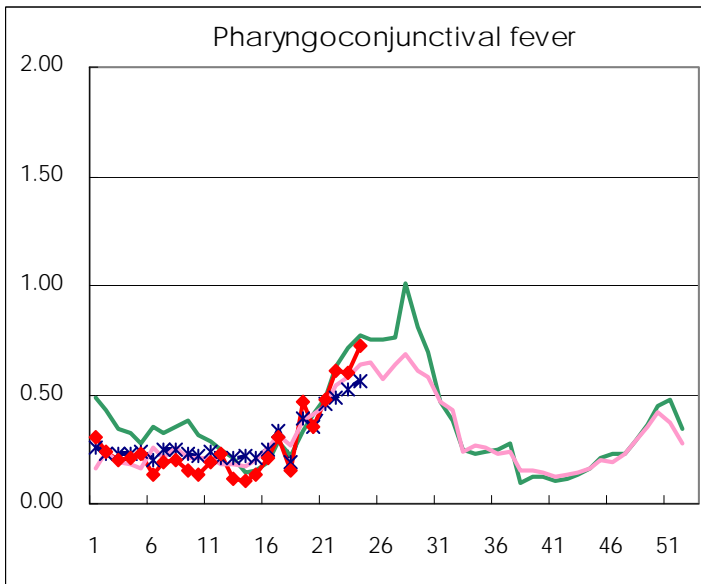
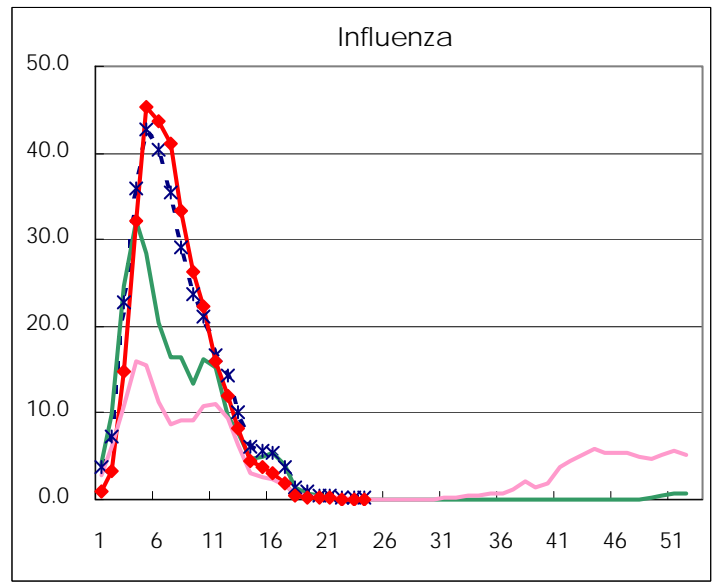
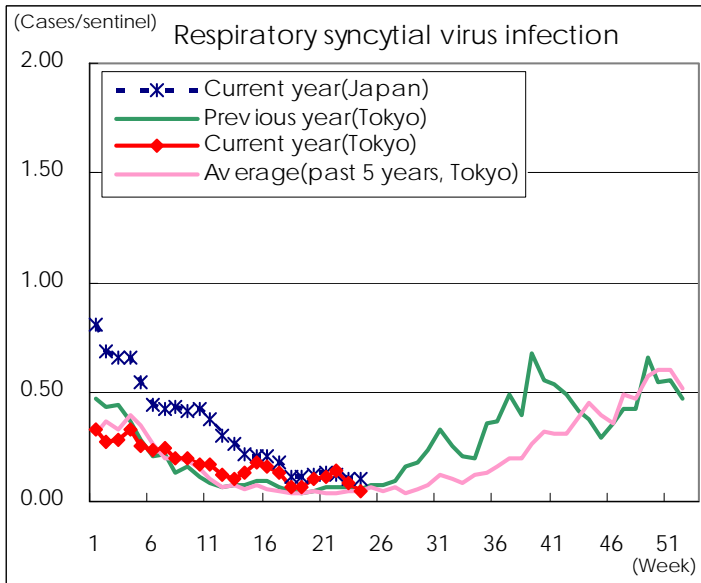
Category	Diseases	Tokyo					Japan	
		21st	22nd	23rd	24th	Cum 2012	24th	Cum 2012
V	Amebiasis	1	5	2	2	79	6	367
	Viral hepatitis(excluding hepatitis A and E)	1		1	1	21	2	98
	Acute encephalitis(excluding JE and WNE)	1				16		208
	Cryptosporidiosis					2		6
	Creutzfeldt-Jakob disease					6	4	80
	Severe invasive streptococcal infections(TSLS)			2		10	1	131
	Acquired immunodeficiency syndrome (AIDS)	10	11	7	12	194	21	606
	Giardiasis		1			7	2	26
	Meningococcal meningitis							6
	Congenital rubella syndrome							
	Syphilis	8	10	4	4	133	13	374
	Tetanus			2		3	1	41
	Vancomycin-resistant S. aureus infection							
	Vancomycin-resistant Enterococcus infection					5	1	38
	Rubella		2	7	8	47	53	393
	Measles	1	2	1	3	25	6	147

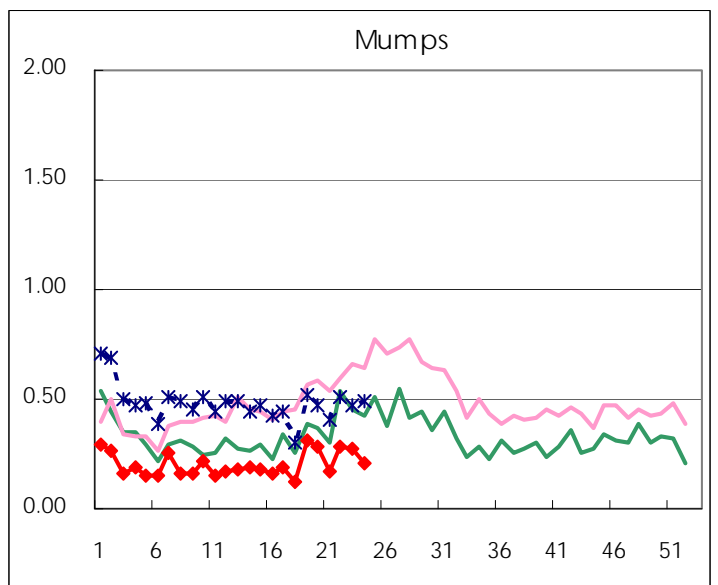
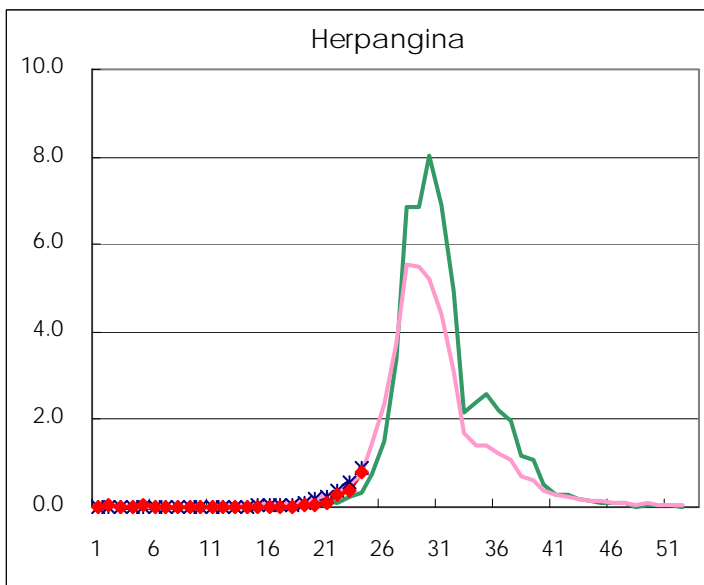
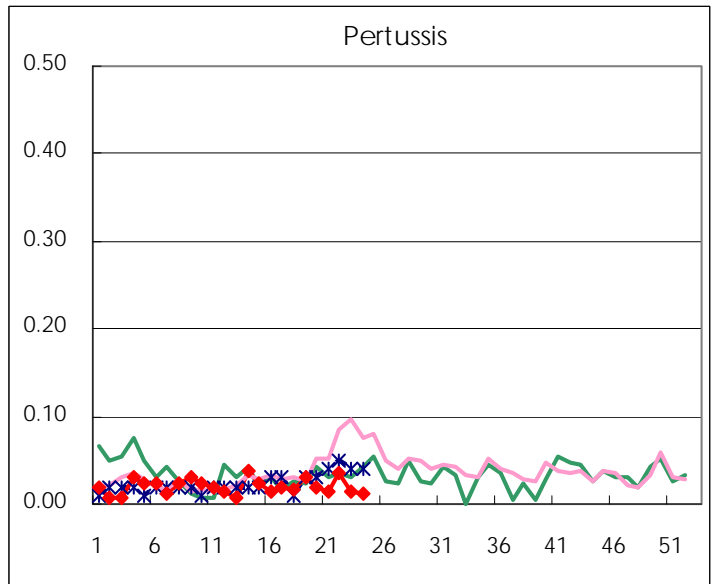
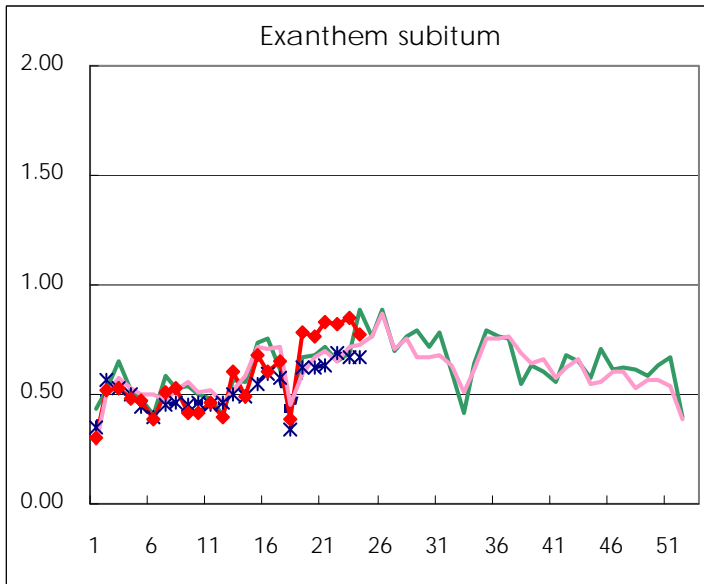
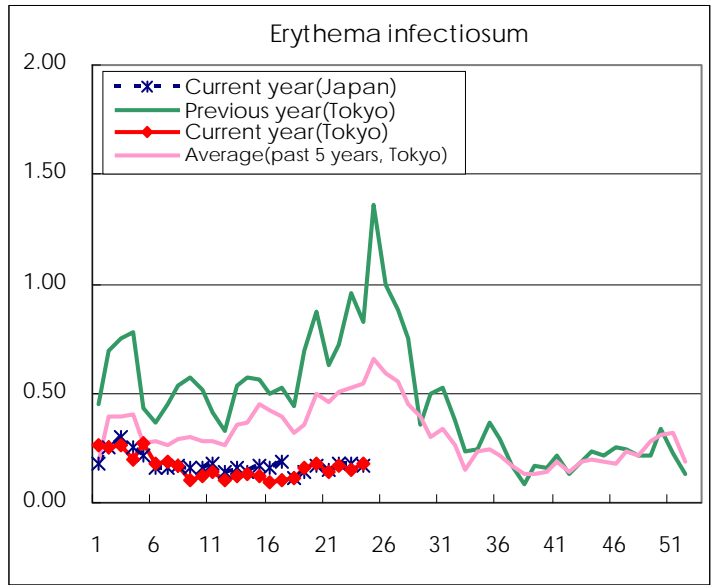
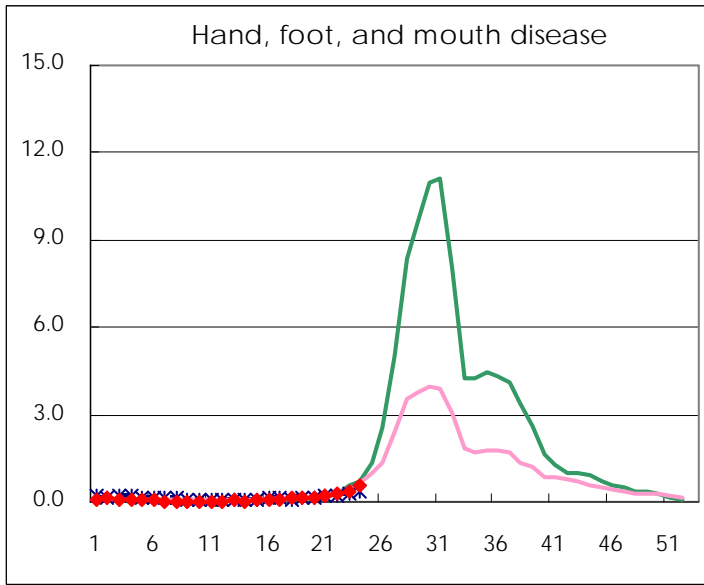
Number of patients with the diseases to be reported
by the designated clinics and hospitals

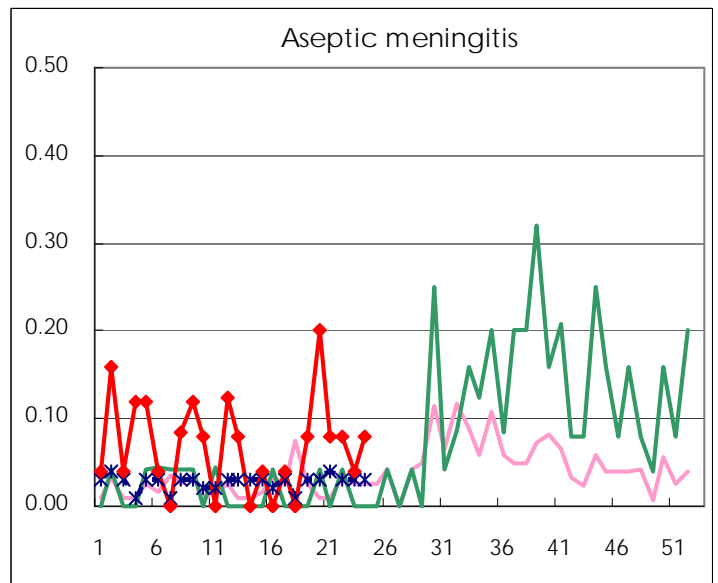
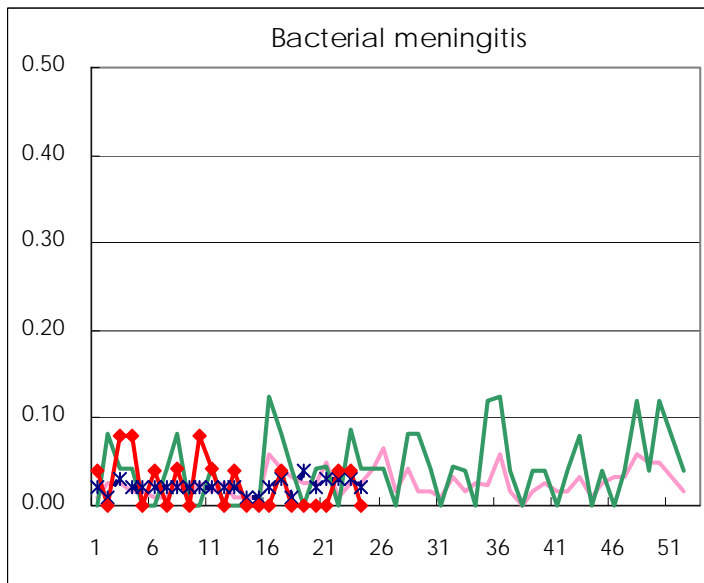
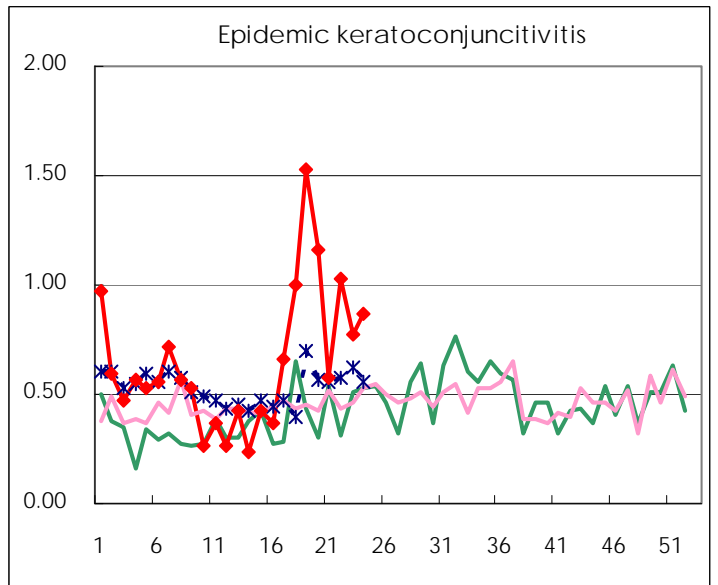
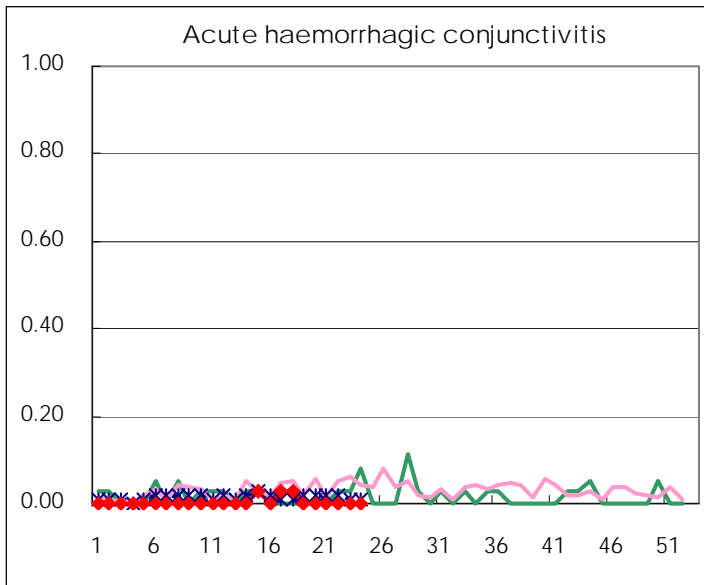
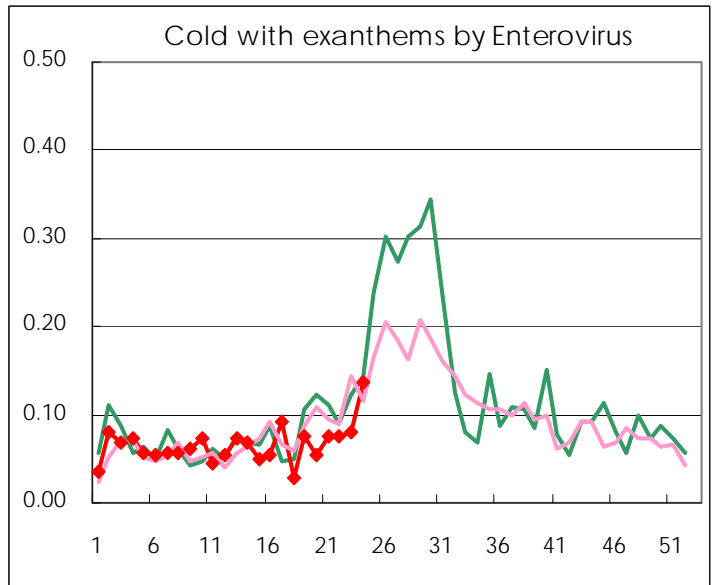
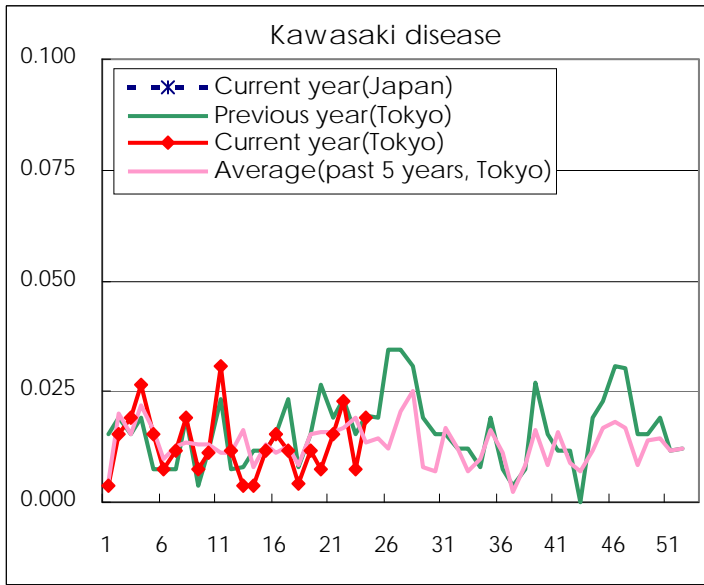
Diseases	Tokyo				
	21st	22nd	23rd	24th	/sentinel
Respiratory syncytial virus infection	30	37	22	13	0.05
Pharyngoconjunctival fever	125	158	157	191	0.73
Group A streptococcal pharyngitis	982	872	803	894	3.40
Infectious gastroenteritis	2,438	2,537	2,323	2,284	8.68
Chickenpox	298	280	353	231	0.88
Hand, foot, and mouth disease	62	81	90	145	0.55
Erythema infectiosum	37	43	40	46	0.17
Exanthem subitum	217	213	224	204	0.78
Pertussis	4	9	4	3	0.01
Herpangina	26	69	100	208	0.79
Mumps	44	75	71	54	0.21
Kawasaki disease	4	6	2	5	0.02
Cold with exanths by Enterovirus	20	20	21	36	0.14
Influenza	57	42	38	10	0.02
Acute hemorrhagic conjunctivitis					
Epidemic keratoconjunctivitis	22	39	30	34	0.87
Bacterial meningitis		1	1		
Aseptic meningitis	2	2	1	2	0.08
Mycoplasma pneumonia	23	15	9	19	0.76
Chlamydial pneumonia (excluding psittacosis)		1			
Influenza-Associated Hospitalizations		1	2		

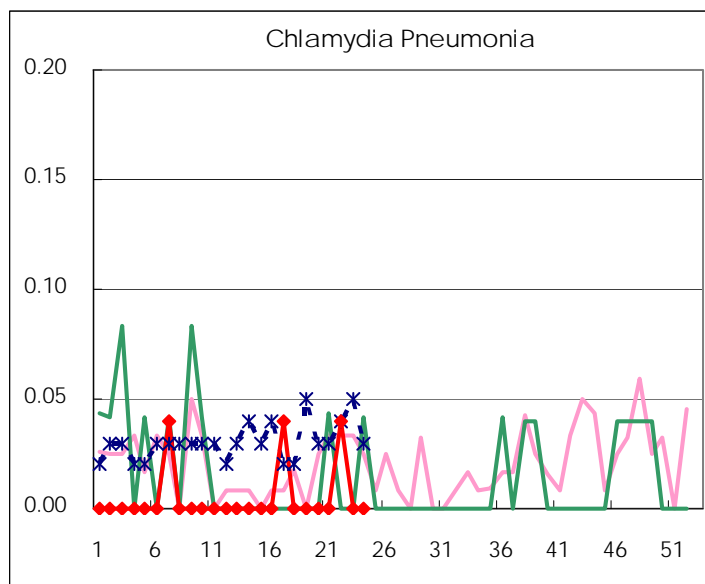
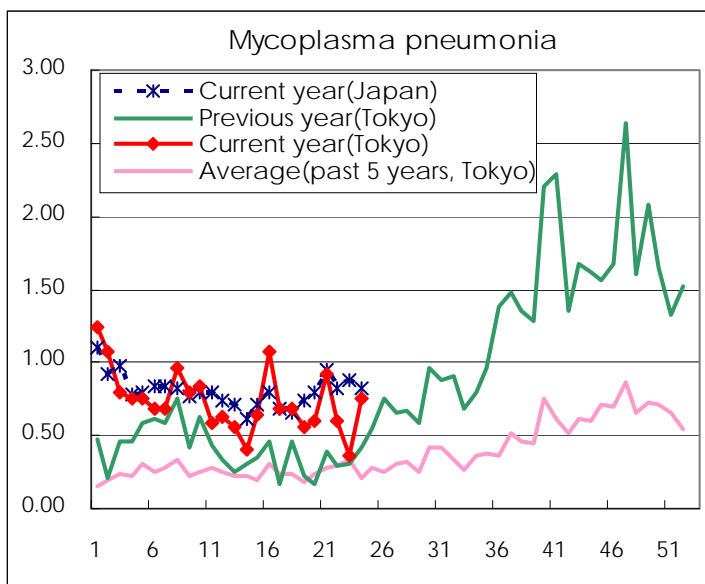
(Blank means 0.)

Disease Trend Graph (weekly reported cases per sentinel in comparison)









Number of sentinel facilities for weekly reporting		
Types of sentinels	Number of sentinels	Sentinels having reported
Pediatric	264	263
Influenza	419	418
Ophthalmic	39	39
Specially-designated	25	25

Tokyo Metropolitan Government
Infectious Disease Surveillance Center