
INFECTIOUS DISEASES WEEKLY REPORT

TOKYO IDWR

Tokyo Metropolitan Infectious Disease Surveillance Center

12 July 2012 / Number 27

Surveillance System in Tokyo, Japan

The infectious diseases which all physicians must report

All physicians must report to health centers the incidence of the diseases which are shown at page one. Health centers electronically report the individual cases to Tokyo Metropolitan Infectious Disease Surveillance Center.

The infectious diseases required to be reported by the sentinels

The numbers of patients who visit the sentinel clinics or hospitals during a week are reported to health centers in Tokyo. And they electronically report the numbers to Tokyo Metropolitan Infectious Disease Surveillance Center. We have about 500 sentinel clinics and hospitals in Tokyo.

1st Week is early January and 52nd Week is end of December.

Tokyo Metropolitan Institute of Public Health

TEL:81-3-3363-3213 FAX:81-3-5332-7365

e-mail:idsc@tokyo-eiken.go.jp

URL:idsc.tokyo-eiken.go.jp/

Number of patients with the diseases which all physicians must report

Category	Diseases	Tokyo				Japan		
		24th	25th	26th	27th	Cum 2012	27th	Cum 2012
I	Ebola hemorrhagic fever							
	Crimean-Congo hemorrhagic fever							
	Smallpox							
	South American hemorrhagic fever							
	Plague							
	Marburg disease							
	Lassa fever							
II	Acute poliomyelitis							
	Tuberculosis	81	104	71	81	2,322	427	14,882
	Diphtheria							
	Severe Acute Respiratory Syndrome(SARS)							
	Avian influenza H5N1							
III	Cholera							2
	Shigellosis		1		1	35	4	109
	Enterohemorrhagic Escherichia coli infection	5	13	4	9	67	98	1,022
	Typhoid fever					5		14
	Paratyphoid fever	1				5		10
IV	Hepatitis E					9		72
	West Nile fever							
	Hepatitis A	3	2		1	23	1	106
	Echinococcosis							5
	Yellow fever							
	Psittacosis							5
	Omsk hemorrhagic fever							
	Relapsing fever							
	Kyasanur forest disease							
	Q fever							
	Rabies							
	Coccidioidomycosis							1
	Monkeypox							
	Hemorrhagic fever with renal syndrome							
	Western equine encephalitis							
	Tick-borne encephalitis							
	Anthrax							
	Chikungunya fever							1
	Scrub typhus(Tsutsugamushi disease)	1			1	3	4	184
	Dengue fever	1		1	3	20	7	71
	Eastern equine encephalitis							
	Avian influenza (excluding H5N1)							
	Nipah virus infection							
	Japanese spotted fever						1	37
	Japanese encephalitis							
	Hantavirus pulmonary syndrome							
	Herpes B virus infection							
	Glanders							
	Brucellosis							
	Venezuelan equine encephalitis							
	Hendra virus infection							
Epidemic typhus								
Botulism							3	
Malaria		1	1	1	11	2	37	
Tularemia								
Lyme disease						1	4	
Lyssavirus infection(excluding rabies)								
Rift valley fever								
Melioidosis								
Legionellosis		3	1	5	32	24	407	
Leptospirosis					3		5	
Rocky mountain spotted fever								

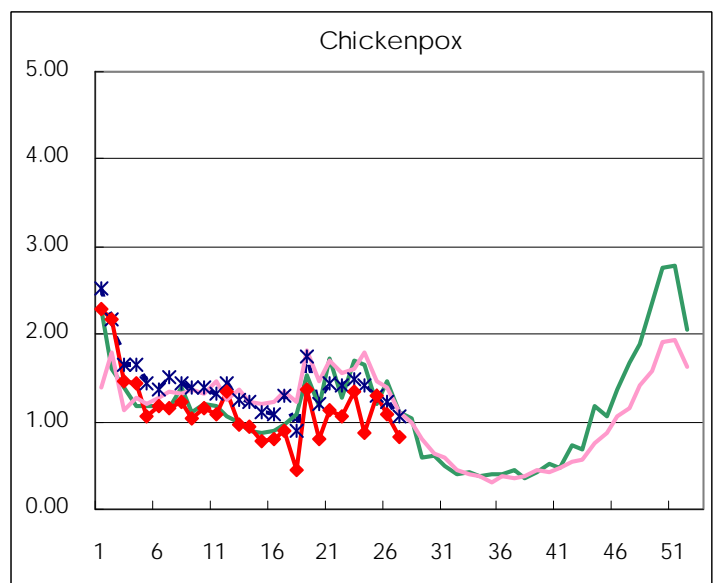
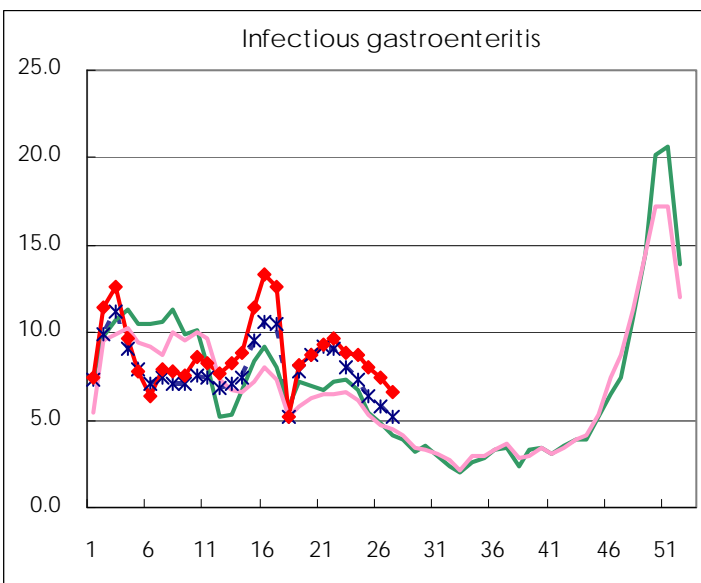
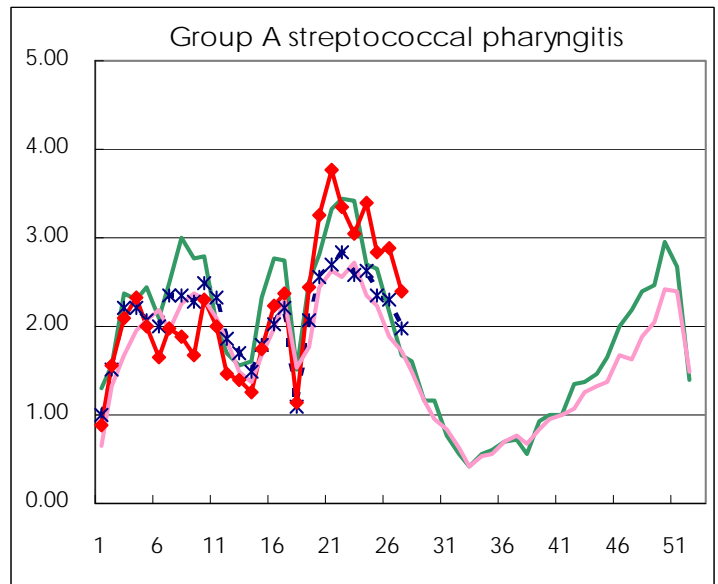
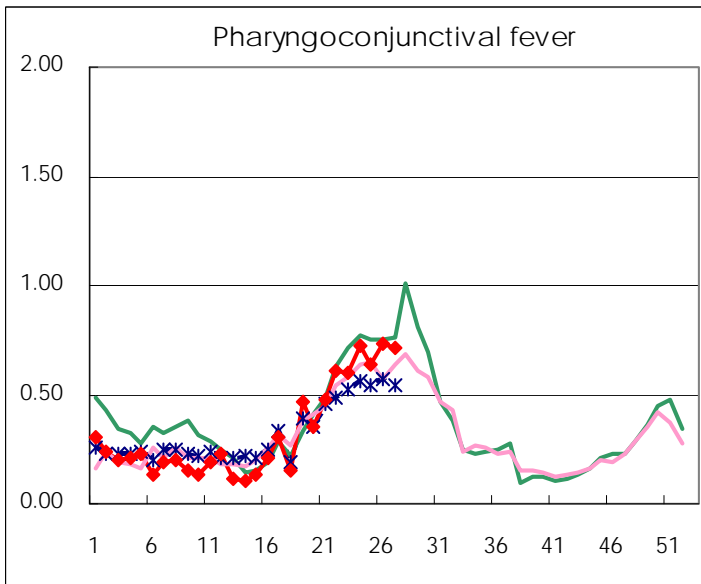
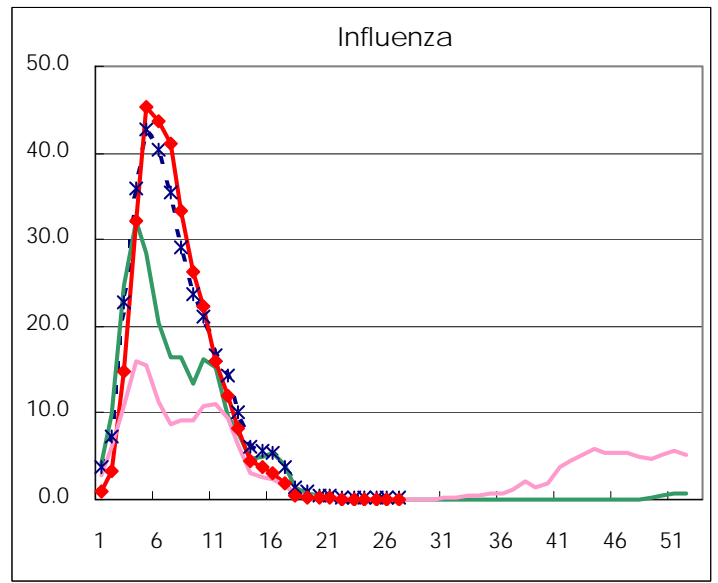
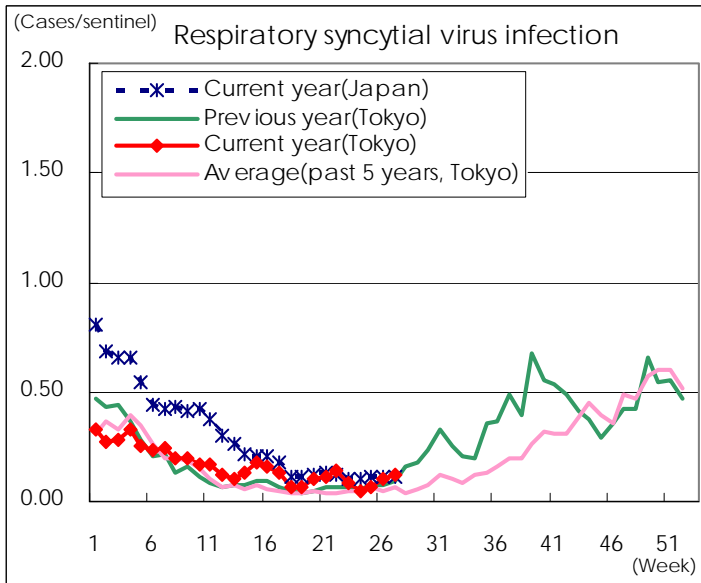
Category	Diseases	Tokyo				Japan		
		24th	25th	26th	27th	Cum 2012	27th	Cum 2012
V	Amebiasis	2	1	4	5	89	19	435
	Viral hepatitis(excluding hepatitis A and E)	1	2	3	1	27	1	115
	Acute encephalitis(excluding JE and WNE)					16	2	221
	Cryptosporidiosis					2		6
	Creutzfeldt-Jakob disease				1	7	2	94
	Severe invasive streptococcal infections(TSLS)					10		145
	Acquired immunodeficiency syndrome (AIDS)	12	11	17	13	235	13	703
	Giardiasis					7	1	29
	Meningococcal meningitis						1	7
	Congenital rubella syndrome							
	Syphilis	4	5	6	2	146	5	426
	Tetanus					3	1	48
	Vancomycin-resistant S. aureus infection							
	Vancomycin-resistant Enterococcus infection		1			6	4	46
	Rubella	8	10	14	39	112	75	594
Measles	2	4		5	32	14	182	

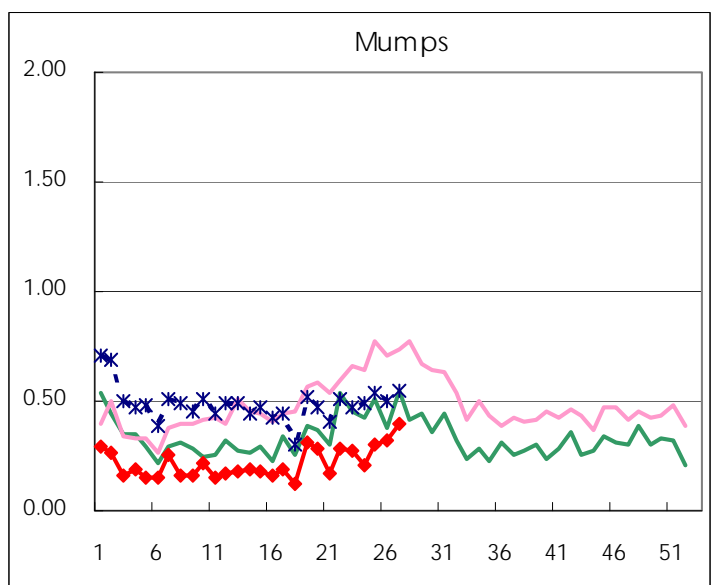
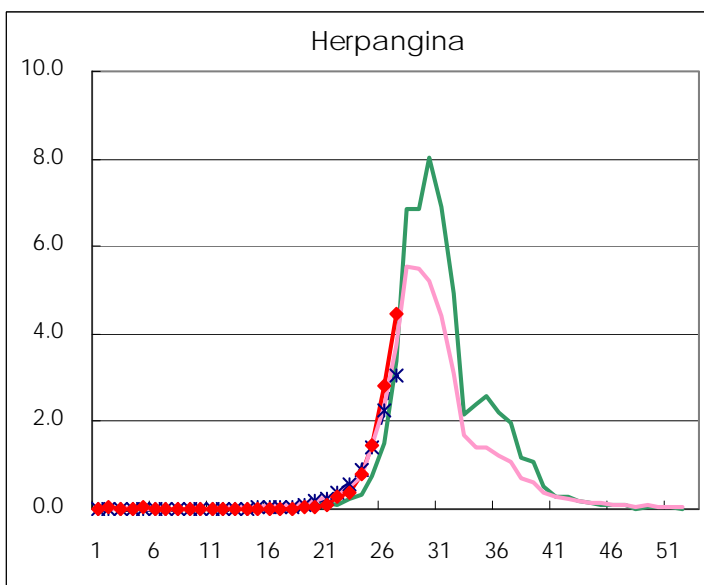
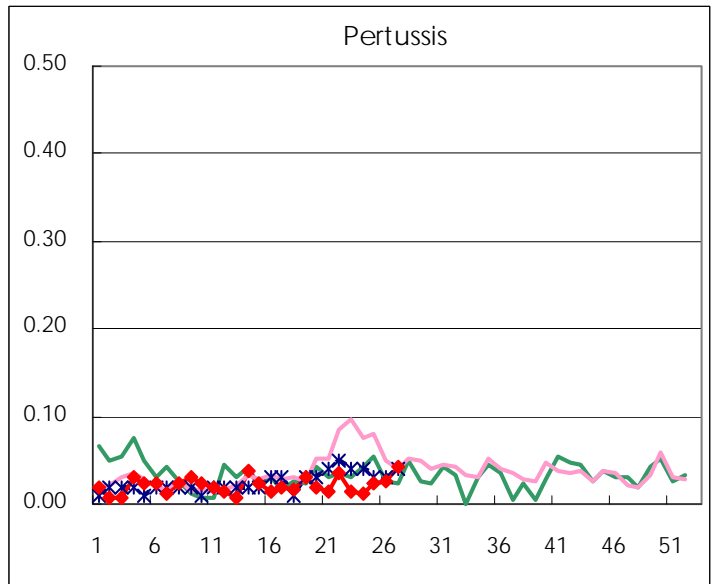
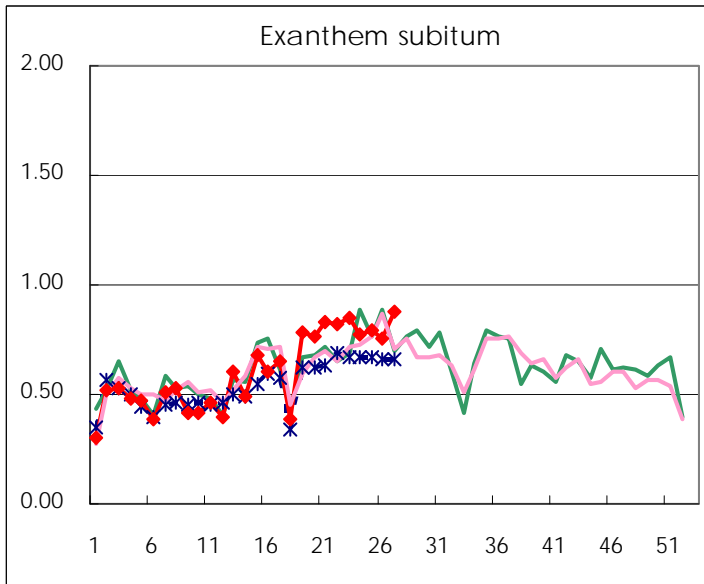
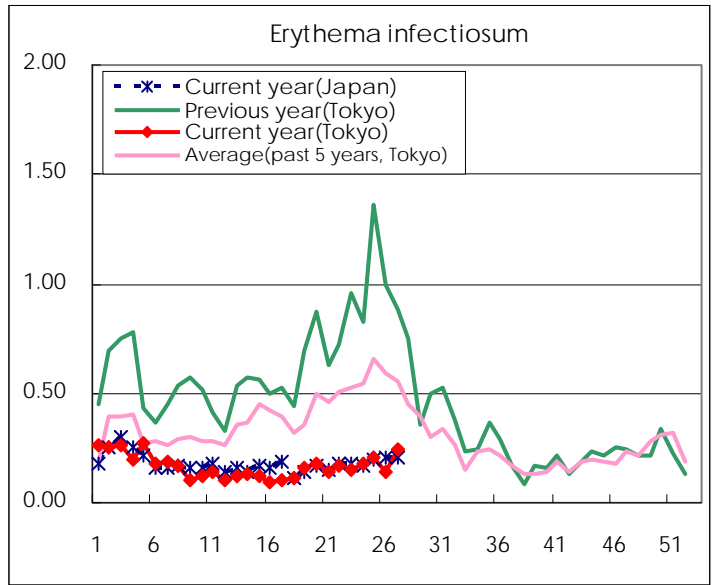
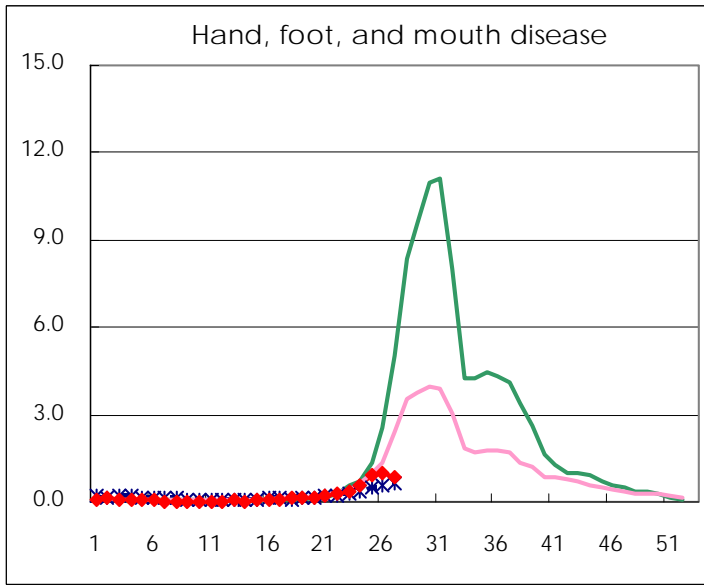
Number of patients with the diseases to be reported
by the designated clinics and hospitals

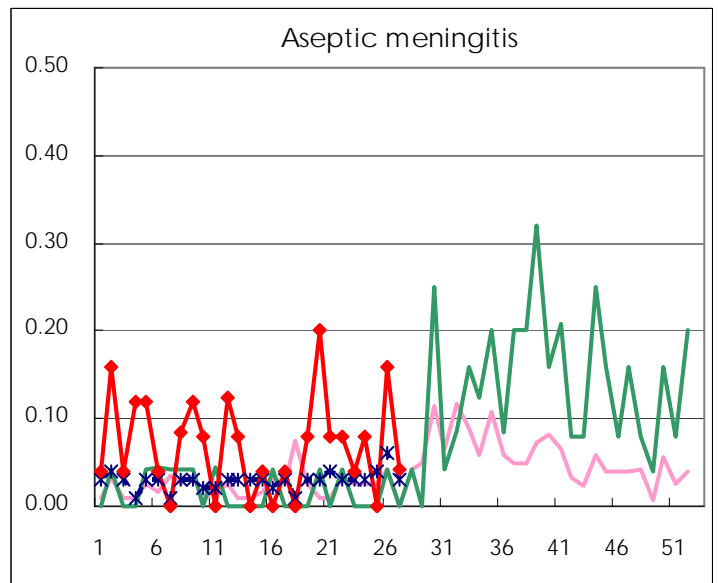
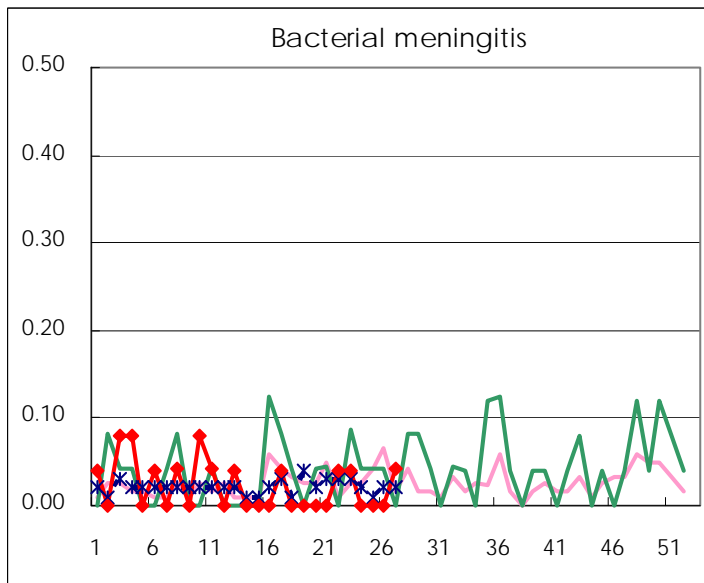
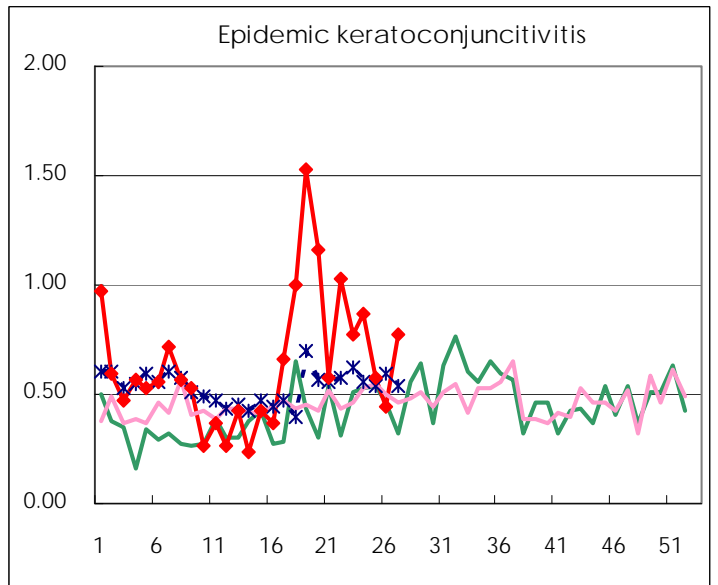
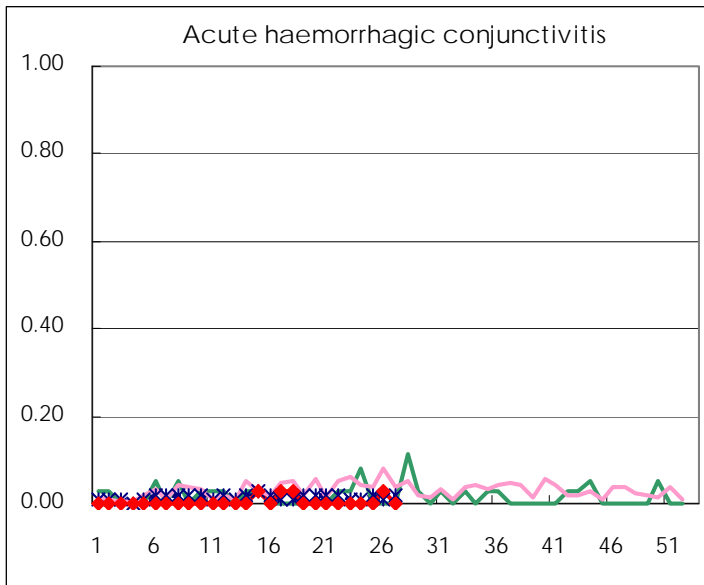
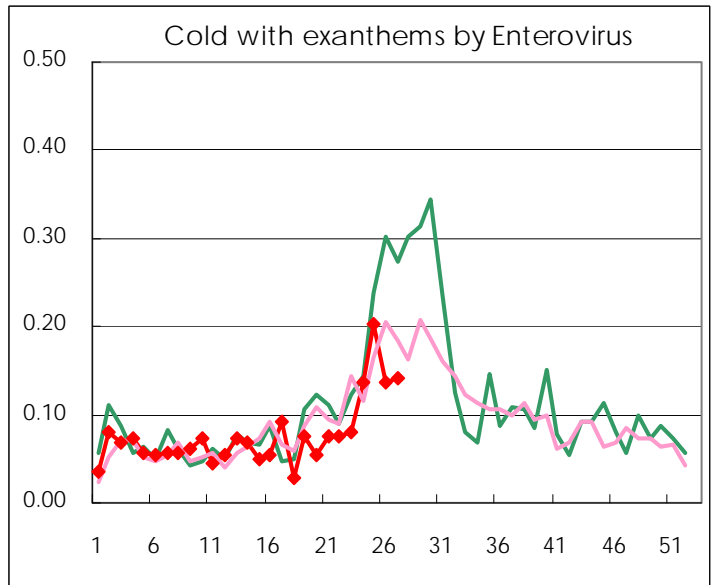
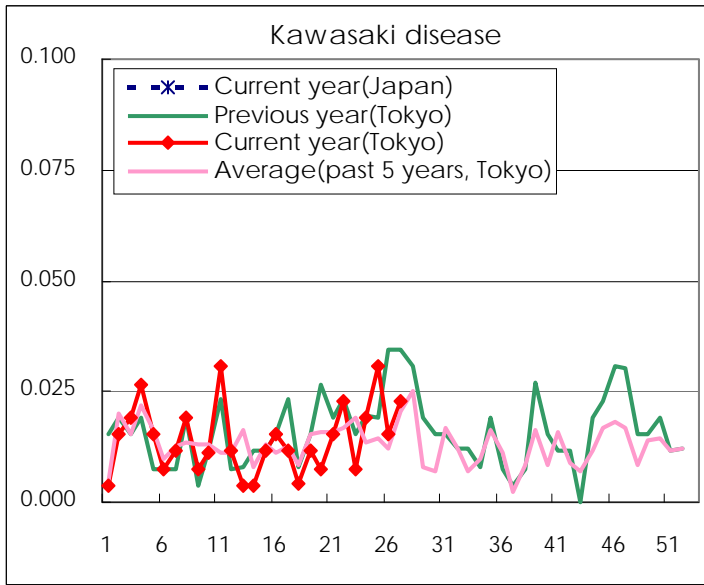
Diseases	Tokyo				
	24th	25th	26th	27th	/sentinel
Respiratory syncytial virus infection	13	17	26	33	0.13
Pharyngoconjunctival fever	191	166	192	189	0.72
Group A streptococcal pharyngitis	894	743	759	633	2.41
Infectious gastroenteritis	2,284	2,102	1,946	1,751	6.66
Chickenpox	231	337	287	219	0.83
Hand, foot, and mouth disease	145	249	258	231	0.88
Erythema infectiosum	46	53	38	65	0.25
Exanthem subitum	204	206	198	230	0.87
Pertussis	3	6	7	11	0.04
Herpangina	208	379	747	1,172	4.46
Mumps	54	80	84	105	0.40
Kawasaki disease	5	8	4	6	0.02
Cold with exanths by Enterovirus	36	53	36	37	0.14
Influenza	10	5	3	4	0.01
Acute hemorrhagic conjunctivitis			1		
Epidemic keratoconjunctivitis	34	22	17	30	0.77
Bacterial meningitis				1	0.04
Aseptic meningitis	2		4	1	0.04
Mycoplasma pneumonia	19	19	14	18	0.75
Chlamydial pneumonia (excluding psittacosis)					
Influenza-Associated Hospitalizations					

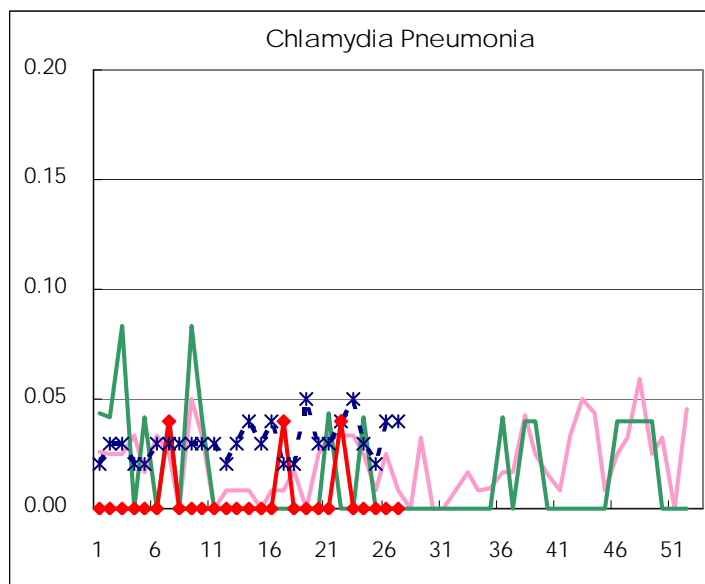
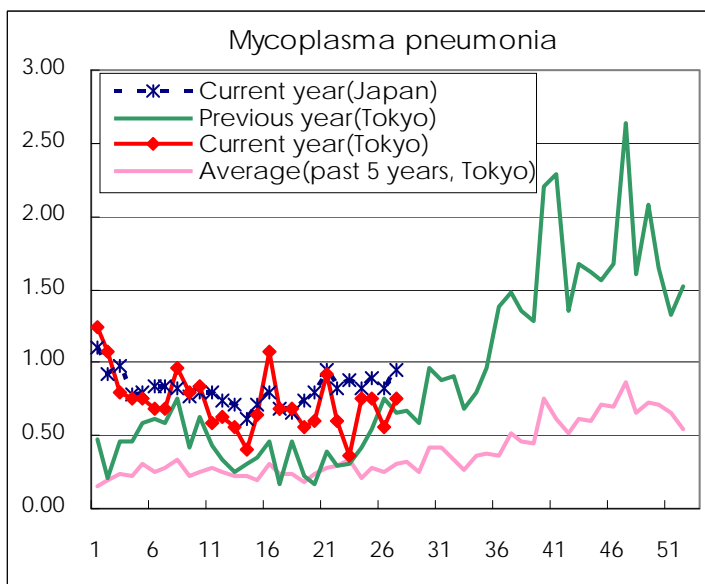
(Blank means 0.)

Disease Trend Graph (weekly reported cases per sentinel in comparison)









Number of sentinel facilities for weekly reporting		
Types of sentinels	Number of sentinels	Sentinels having reported
Pediatric	264	263
Influenza	419	418
Ophthalmic	39	39
Specially-designated	25	24

Tokyo Metropolitan Government
Infectious Disease Surveillance Center