
INFECTIOUS DISEASES WEEKLY REPORT

TOKYO IDWR

Tokyo Metropolitan Infectious Disease Surveillance Center

19 July 2012 / Number 28

Surveillance System in Tokyo, Japan

The infectious diseases which all physicians must report

All physicians must report to health centers the incidence of the diseases which are shown at page one. Health centers electronically report the individual cases to Tokyo Metropolitan Infectious Disease Surveillance Center.

The infectious diseases required to be reported by the sentinels

The numbers of patients who visit the sentinel clinics or hospitals during a week are reported to health centers in Tokyo. And they electronically report the numbers to Tokyo Metropolitan Infectious Disease Surveillance Center. We have about 500 sentinel clinics and hospitals in Tokyo.

1st Week is early January and 52nd Week is end of December.

Tokyo Metropolitan Institute of Public Health

TEL:81-3-3363-3213 FAX:81-3-5332-7365

e-mail:idsc@tokyo-eiken.go.jp

URL:idsc.tokyo-eiken.go.jp/

Number of patients with the diseases which all physicians must report

Category	Diseases	Tokyo				Japan		
		25th	26th	27th	28th	Cum 2012	28th	Cum 2012
I	Ebola hemorrhagic fever							
	Crimean-Congo hemorrhagic fever							
	Smallpox							
	South American hemorrhagic fever							
	Plague							
	Marburg disease							
	Lassa fever							
II	Acute poliomyelitis							
	Tuberculosis	104	77	96	96	2,439	423	15,473
	Diphtheria							
	Severe Acute Respiratory Syndrome(SARS)							
	Avian influenza H5N1							
III	Cholera							2
	Shigellosis	1		1		35	2	111
	Enterohemorrhagic Escherichia coli infection	13	4	9	9	76	94	1,129
	Typhoid fever					5	1	15
	Paratyphoid fever					5		10
IV	Hepatitis E					9	2	76
	West Nile fever							
	Hepatitis A	2		1		23		106
	Echinococcosis							6
	Yellow fever							
	Psittacosis							5
	Omsk hemorrhagic fever							
	Relapsing fever							
	Kyasanur forest disease							
	Q fever							
	Rabies							
	Coccidioidomycosis							1
	Monkeypox							
	Hemorrhagic fever with renal syndrome							
	Western equine encephalitis							
	Tick-borne encephalitis							
	Anthrax							
	Chikungunya fever							1
	Scrub typhus(Tsutsugamushi disease)			1		3	2	188
	Dengue fever		1	3		20	1	72
	Eastern equine encephalitis							
	Avian influenza (excluding H5N1)							
	Nipah virus infection							
	Japanese spotted fever						4	41
	Japanese encephalitis							
	Hantavirus pulmonary syndrome							
	Herpes B virus infection							
	Glanders							
	Brucellosis							
	Venezuelan equine encephalitis							
	Hendra virus infection							
	Epidemic typhus							
	Botulism							3
Malaria	1	1	1		11		37	
Tularemia								
Lyme disease							5	
Lyssavirus infection(excluding rabies)								
Rift valley fever								
Melioidosis								
Legionellosis	3	1	5	1	33	18	429	
Leptospirosis					3		5	
Rocky mountain spotted fever								

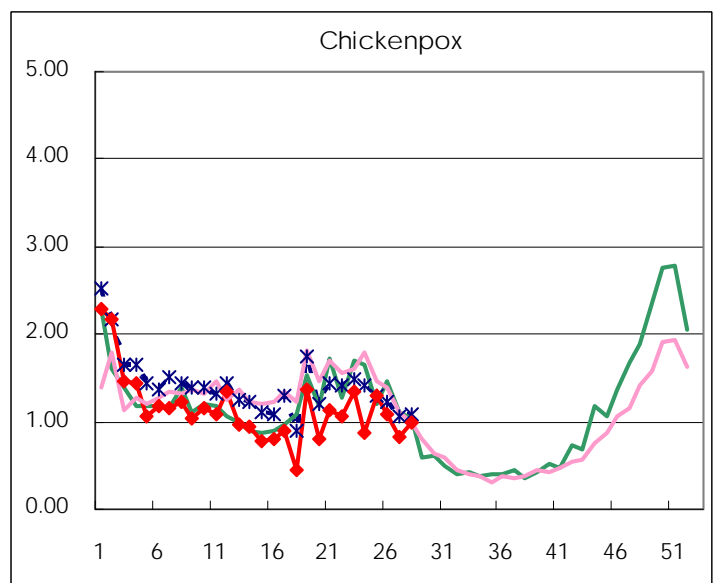
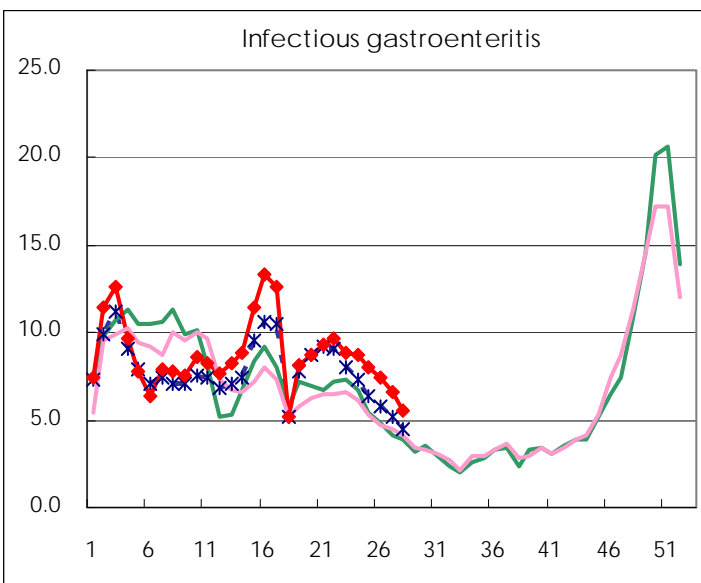
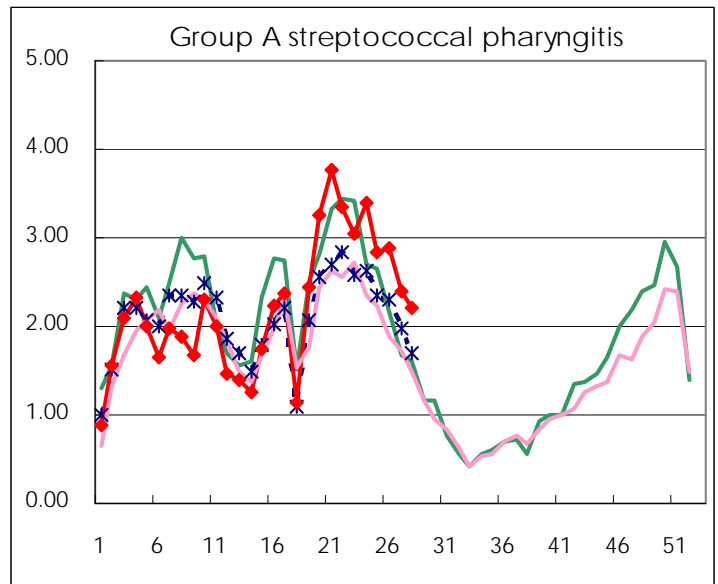
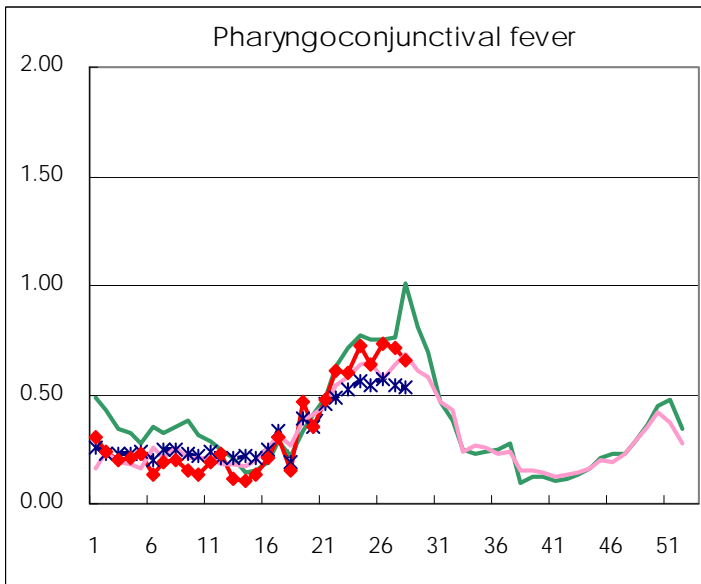
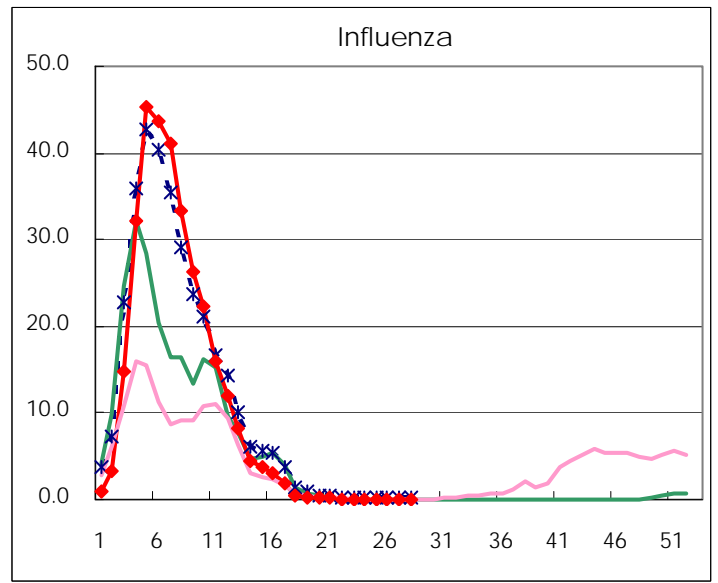
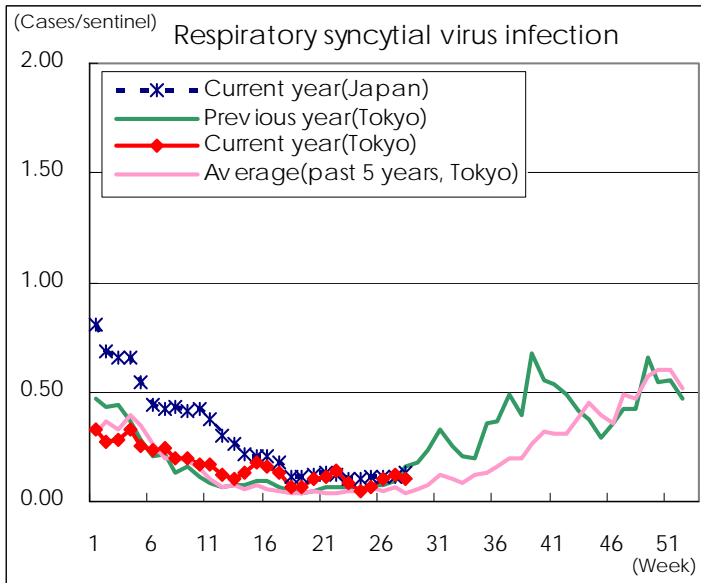
Category	Diseases	Tokyo				Japan		
		25th	26th	27th	28th	Cum 2012	28th	Cum 2012
V	Amebiasis	1	4	5	2	91	10	450
	Viral hepatitis(excluding hepatitis A and E)	2	3	1	1	28	1	117
	Acute encephalitis(excluding JE and WNE)				1	17	4	226
	Cryptosporidiosis					2		6
	Creutzfeldt-Jakob disease			1		7	3	97
	Severe invasive streptococcal infections(TSLS)					10	2	146
	Acquired immunodeficiency syndrome (AIDS)	11	17	13	15	250	16	728
	Giardiasis				1	8		30
	Meningococcal meningitis							7
	Congenital rubella syndrome							
	Syphilis	5	6	2	1	147	8	436
	Tetanus					3	1	50
	Vancomycin-resistant S. aureus infection							
	Vancomycin-resistant Enterococcus infection	1				6	1	47
	Rubella	10	15	38	29	142	60	692
Measles	3		5	6	37	14	194	

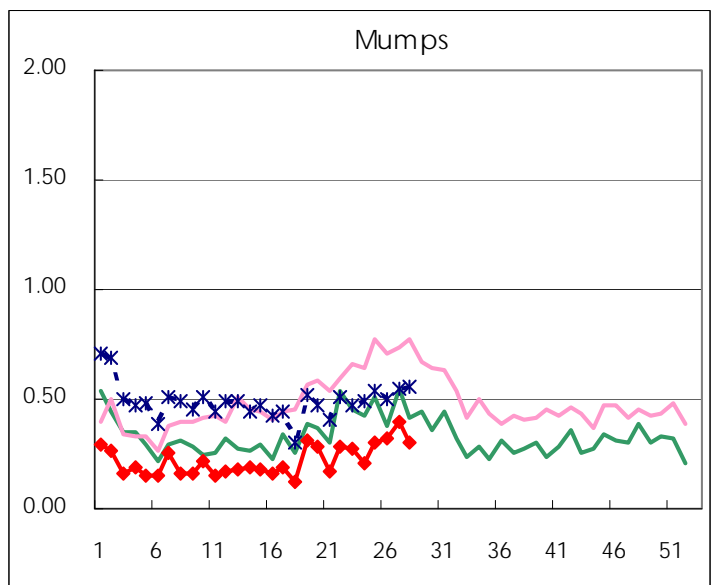
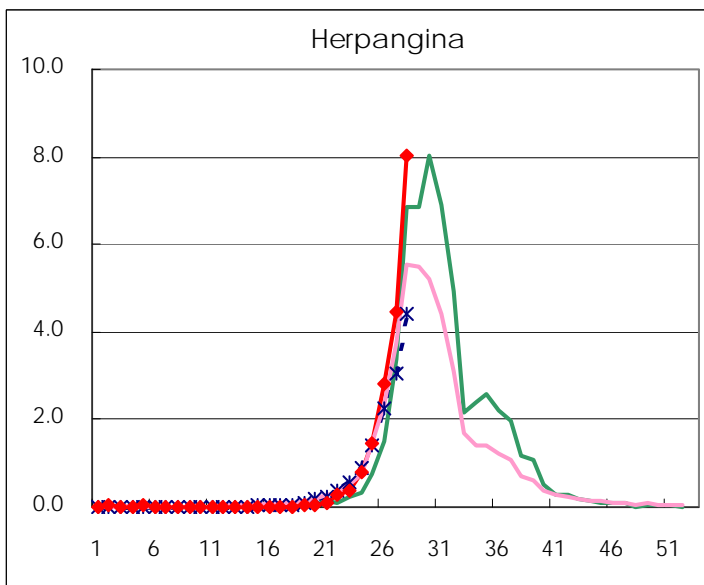
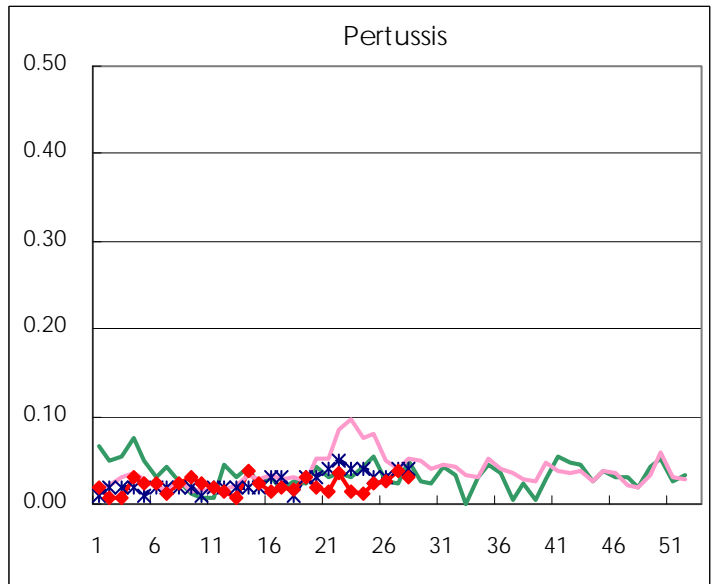
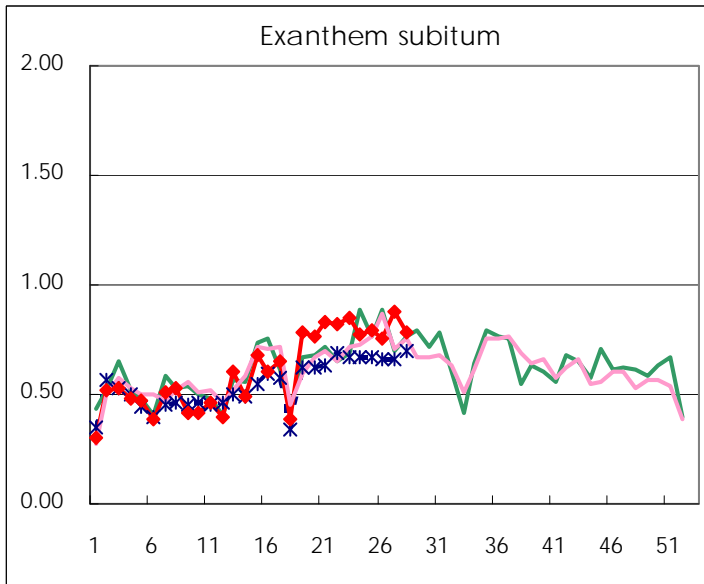
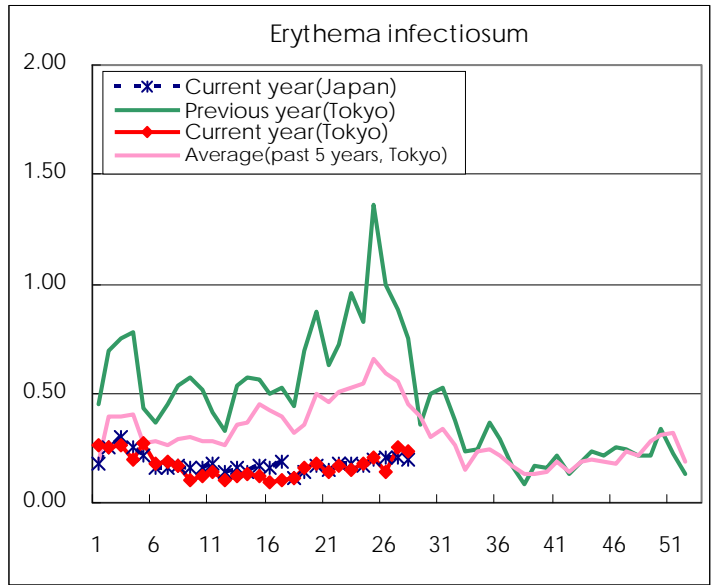
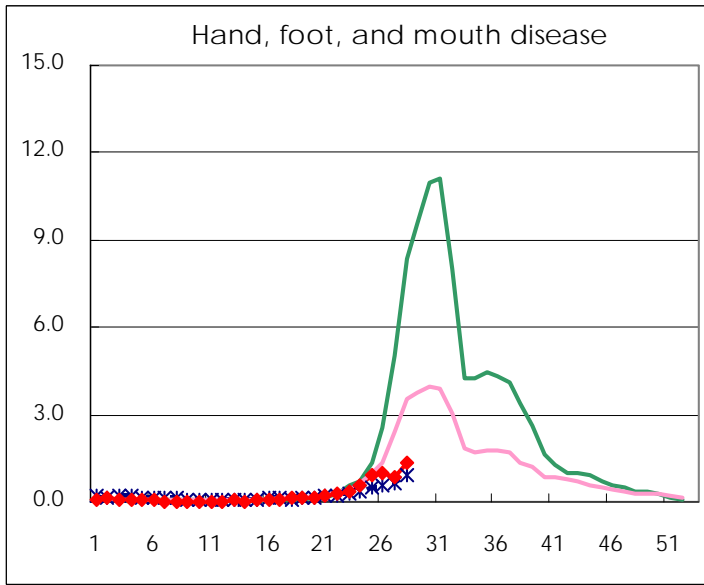
Number of patients with the diseases to be reported
by the designated clinics and hospitals

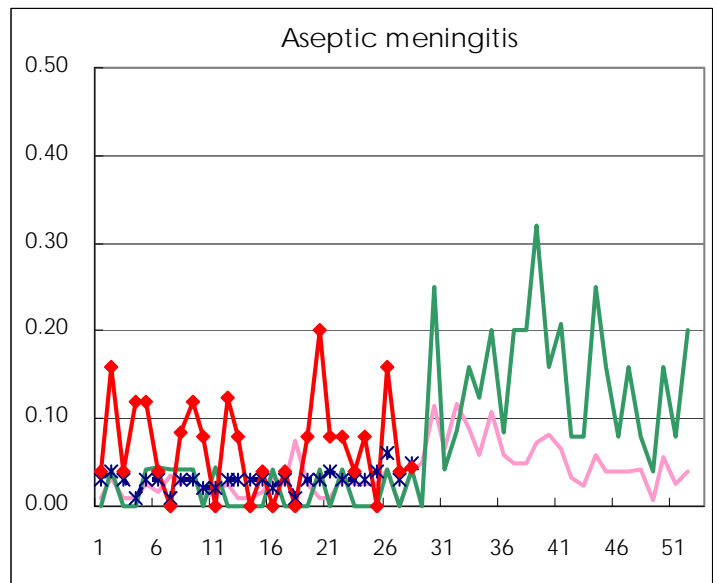
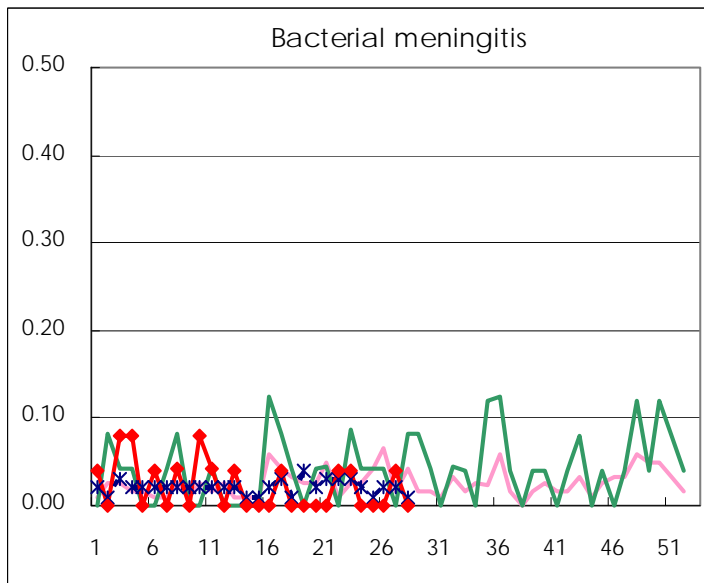
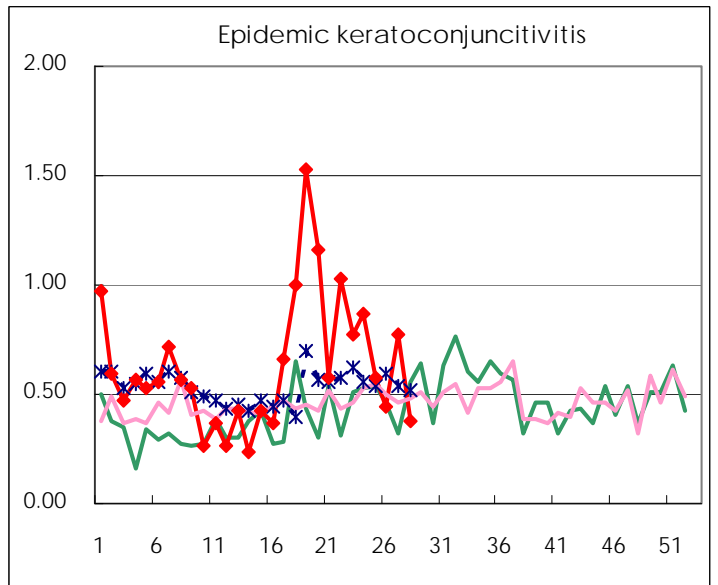
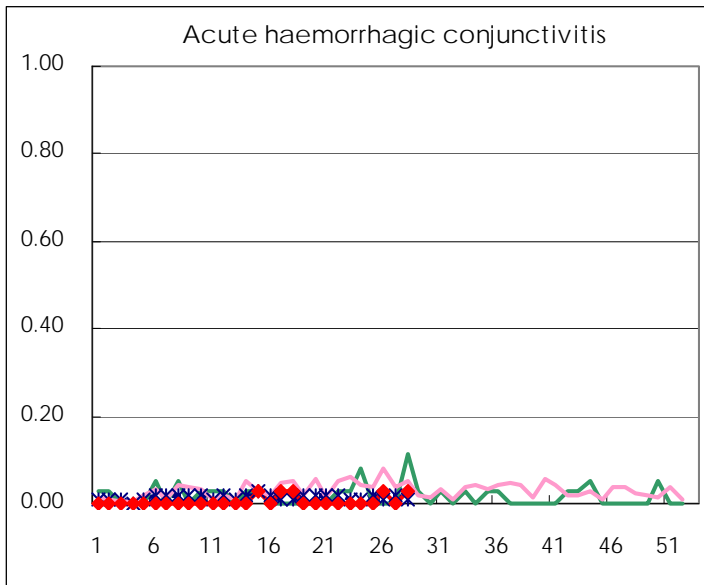
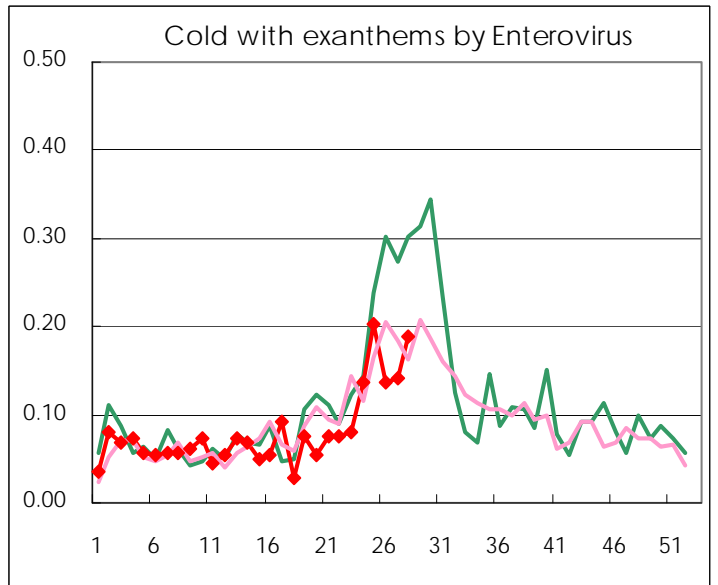
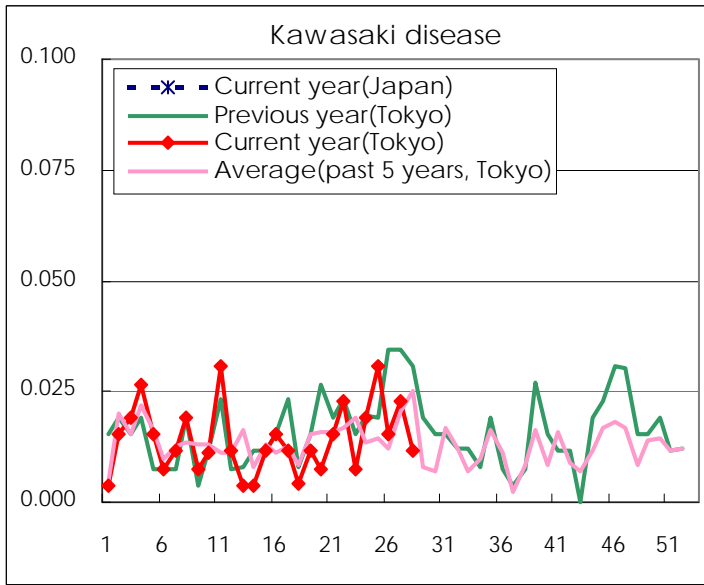
Diseases	Tokyo				
	25th	26th	27th	28th	/sentinel
Respiratory syncytial virus infection	17	26	33	28	0.11
Pharyngoconjunctival fever	166	192	189	172	0.66
Group A streptococcal pharyngitis	743	759	633	572	2.20
Infectious gastroenteritis	2,102	1,946	1,751	1,434	5.52
Chickenpox	337	287	219	257	0.99
Hand, foot, and mouth disease	249	258	231	358	1.38
Erythema infectiosum	53	38	66	60	0.23
Exanthem subitum	206	198	230	204	0.78
Pertussis	6	7	10	8	0.03
Herpangina	379	747	1,172	2,090	8.04
Mumps	80	84	105	79	0.30
Kawasaki disease	8	4	6	3	0.01
Cold with exanths by Enterovirus	53	36	37	49	0.19
Influenza	5	3	4	21	0.05
Acute hemorrhagic conjunctivitis		1		1	0.03
Epidemic keratoconjunctivitis	22	17	30	14	0.38
Bacterial meningitis			1		
Aseptic meningitis		4	1	1	0.05
Mycoplasma pneumonia	19	14	18	14	0.64
Chlamydial pneumonia (excluding psittacosis)					
Influenza-Associated Hospitalizations				1	0.04

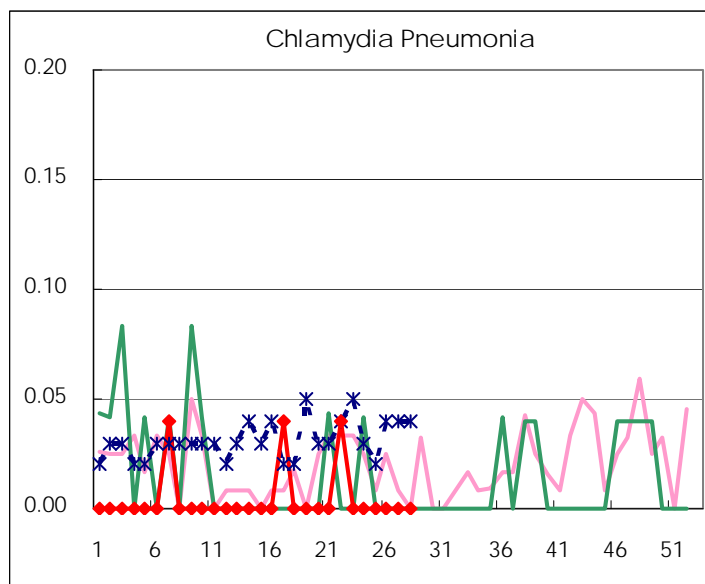
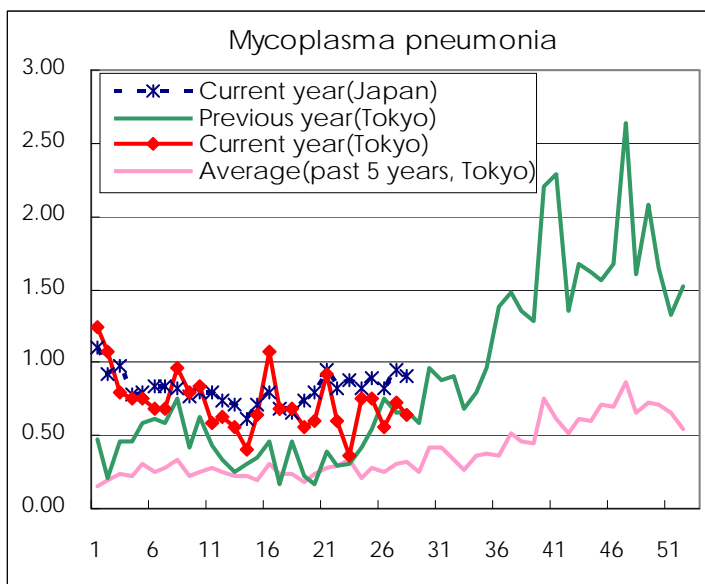
(Blank means 0.)

Disease Trend Graph (weekly reported cases per sentinel in comparison)









Number of sentinel facilities for weekly reporting		
Types of sentinels	Number of sentinels	Sentinels having reported
Pediatric	264	260
Influenza	419	412
Ophthalmic	39	37
Specially-designated	25	22

Tokyo Metropolitan Government
Infectious Disease Surveillance Center