

---

INFECTIOUS DISEASES WEEKLY REPORT

# TOKYO IDWR

Tokyo Metropolitan Infectious Disease Surveillance Center

## 26 July 2012 / Number 29

### Surveillance System in Tokyo, Japan

#### The infectious diseases which all physicians must report

All physicians must report to health centers the incidence of the diseases which are shown at page one. Health centers electronically report the individual cases to Tokyo Metropolitan Infectious Disease Surveillance Center.

#### The infectious diseases required to be reported by the sentinels

The numbers of patients who visit the sentinel clinics or hospitals during a week are reported to health centers in Tokyo. And they electronically report the numbers to Tokyo Metropolitan Infectious Disease Surveillance Center. We have about 500 sentinel clinics and hospitals in Tokyo.

1st Week is early January and 52nd Week is end of December.

Tokyo Metropolitan Institute of Public Health

TEL:81-3-3363-3213 FAX:81-3-5332-7365

e-mail:[idsc@tokyo-eiken.go.jp](mailto:idsc@tokyo-eiken.go.jp)

URL:[idsc.tokyo-eiken.go.jp/](http://idsc.tokyo-eiken.go.jp/)

---

## Number of patients with the diseases which all physicians must report

Category	Diseases	Tokyo				Japan		
		26th	27th	28th	29th	Cum 2012	29th	Cum 2012
I	Ebola hemorrhagic fever							
	Crimean-Congo hemorrhagic fever							
	Smallpox							
	South American hemorrhagic fever							
	Plague							
	Marburg disease							
	Lassa fever							
II	Acute poliomyelitis							
	Tuberculosis	78	97	112	90	2,547	366	16,069
	Diphtheria							
	Severe Acute Respiratory Syndrome(SARS)							
	Avian influenza H5N1							
III	Cholera							2
	Shigellosis		1		1	36	1	112
	Enterohemorrhagic Escherichia coli infection	4	9	10	7	84	95	1,244
	Typhoid fever					5		15
	Paratyphoid fever					5		10
IV	Hepatitis E				1	10	1	78
	West Nile fever							
	Hepatitis A		1		1	24	3	113
	Echinococcosis							6
	Yellow fever							
	Psittacosis							5
	Omsk hemorrhagic fever							
	Relapsing fever							
	Kyasanur forest disease							
	Q fever							
	Rabies							
	Coccidioidomycosis							1
	Monkeypox							
	Hemorrhagic fever with renal syndrome							
	Western equine encephalitis							
	Tick-borne encephalitis							
	Anthrax							
	Chikungunya fever							1
	Scrub typhus(Tsutsugamushi disease)		1			3	1	190
	Dengue fever	1	3			20	5	76
	Eastern equine encephalitis							
	Avian influenza (excluding H5N1)							
	Nipah virus infection							
	Japanese spotted fever						2	43
	Japanese encephalitis							
	Hantavirus pulmonary syndrome							
	Herpes B virus infection							
	Glanders							
	Brucellosis							
	Venezuelan equine encephalitis							
	Hendra virus infection							
Epidemic typhus								
Botulism							3	
Malaria	1	1			11		37	
Tularemia								
Lyme disease							5	
Lyssavirus infection(excluding rabies)								
Rift valley fever								
Melioidosis								
Legionellosis	1	5	1		33	27	461	
Leptospirosis					3	1	6	
Rocky mountain spotted fever								

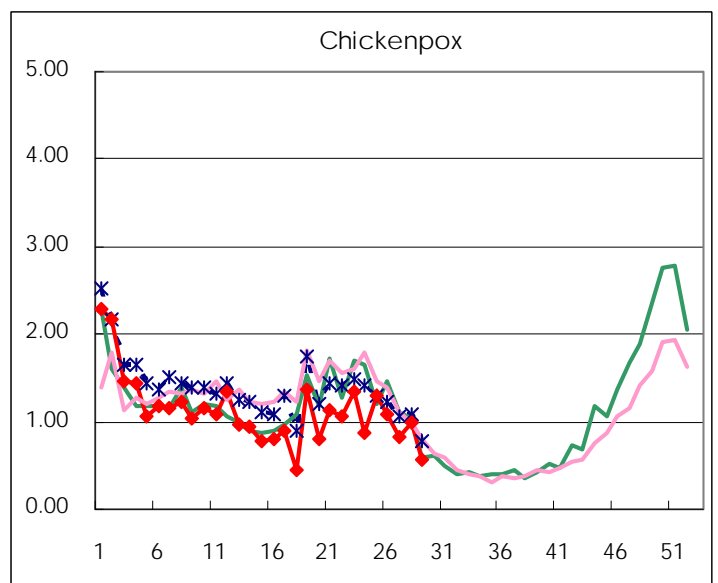
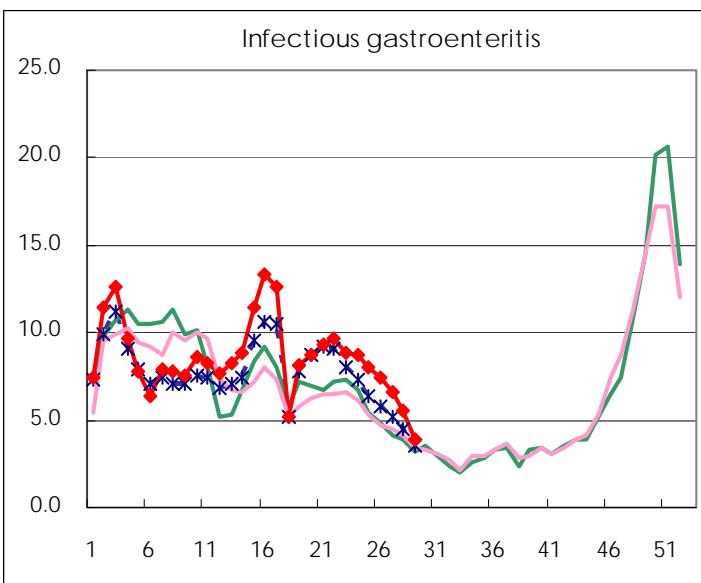
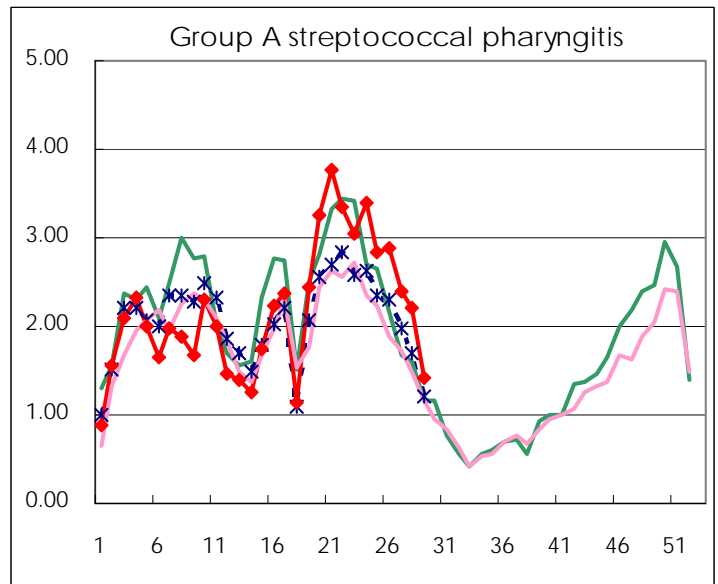
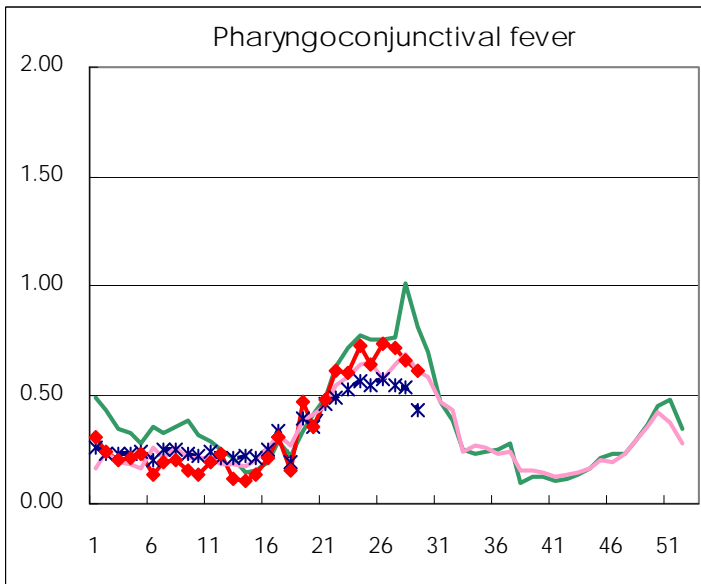
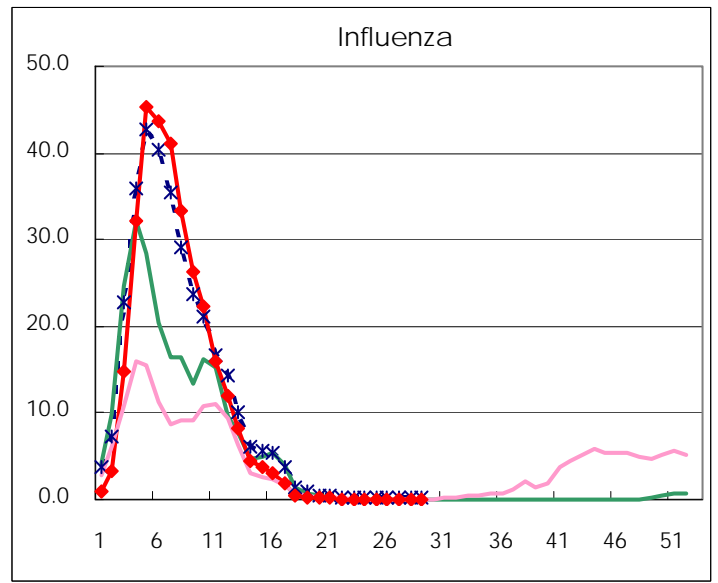
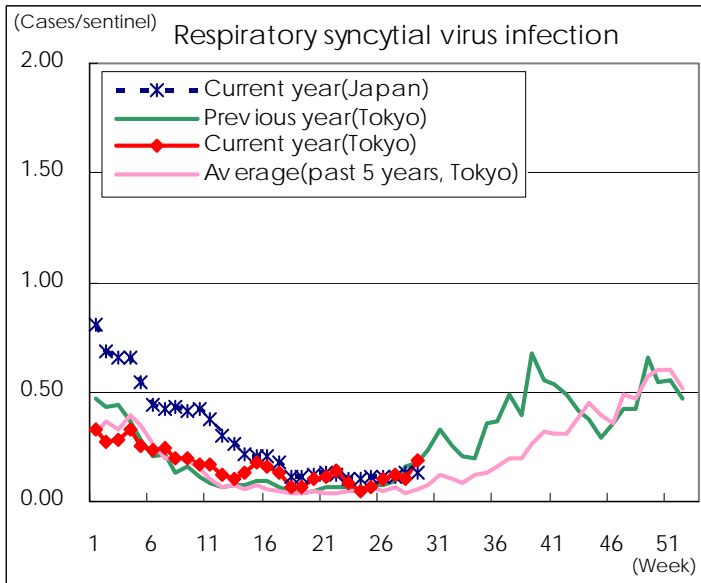
Category	Diseases	Tokyo				Japan		
		26th	27th	28th	29th	Cum 2012	29th	Cum 2012
V	Amebiasis	4	5	2	3	94	11	471
	Viral hepatitis(excluding hepatitis A and E)	3	1	1		28	3	123
	Acute encephalitis(excluding JE and WNE)			1	1	18	4	230
	Cryptosporidiosis					2		6
	Creutzfeldt-Jakob disease		1			7	2	101
	Severe invasive streptococcal infections(TSLS)				1	11	2	148
	Acquired immunodeficiency syndrome (AIDS)	17	13	15	7	257	15	750
	Giardiasis			1		8		30
	Meningococcal meningitis							7
	Congenital rubella syndrome							
	Syphilis	6	2	1	4	151	10	452
	Tetanus					3		55
	Vancomycin-resistant S. aureus infection							
	Vancomycin-resistant Enterococcus infection					6	1	48
	Rubella	15	38	32	20	165	50	776
Measles		5	6	3	40	5	196	

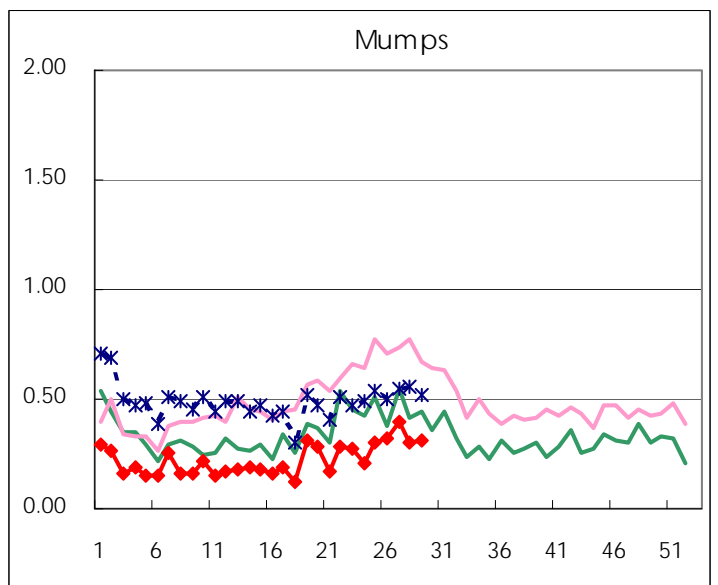
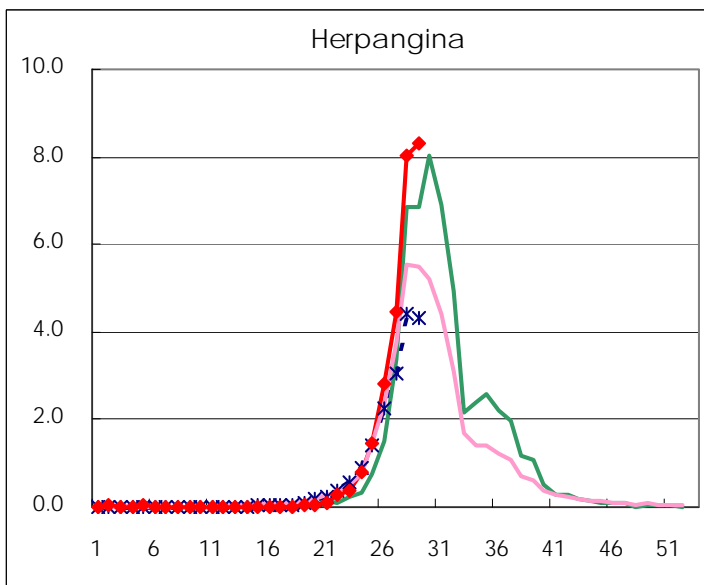
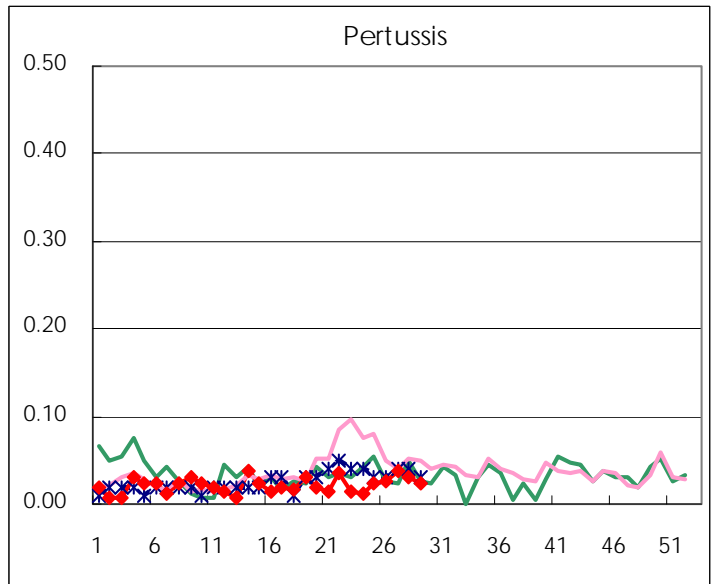
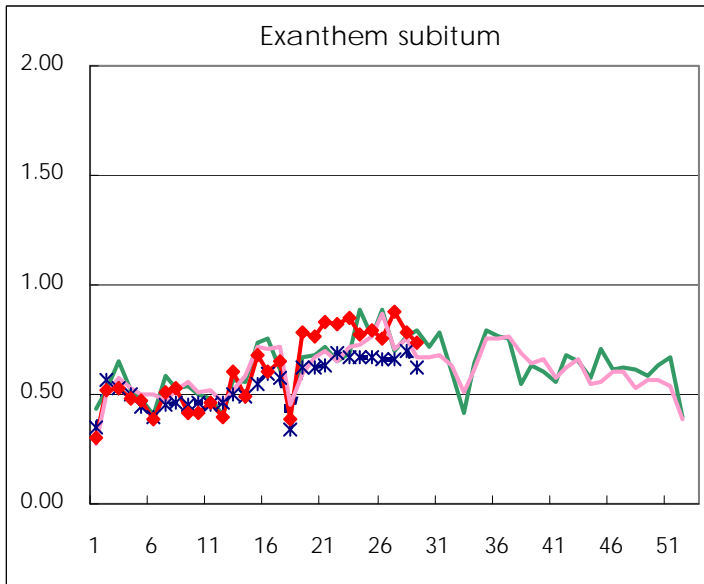
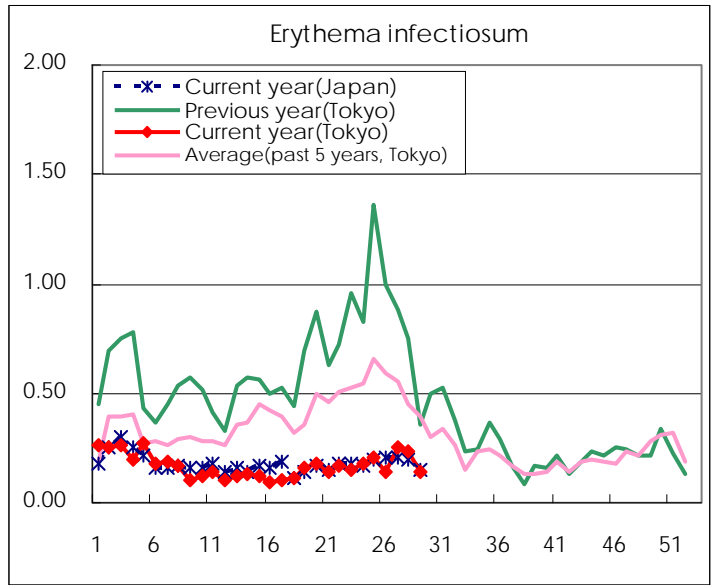
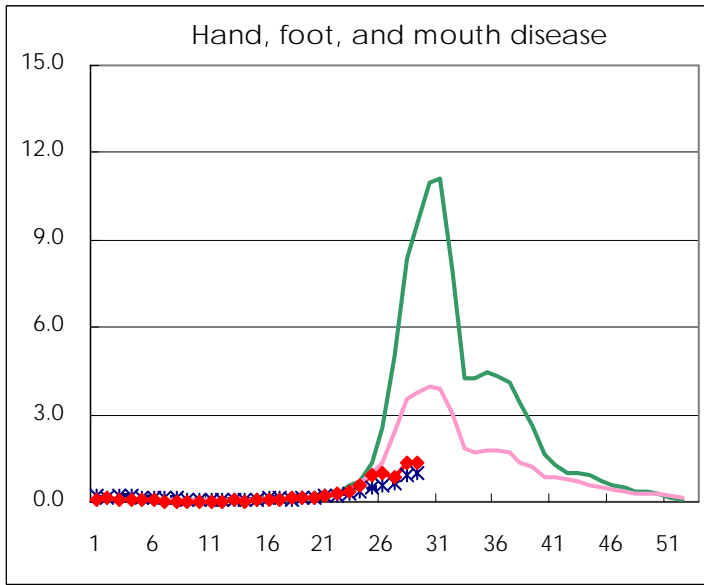
Number of patients with the diseases to be reported  
by the designated clinics and hospitals

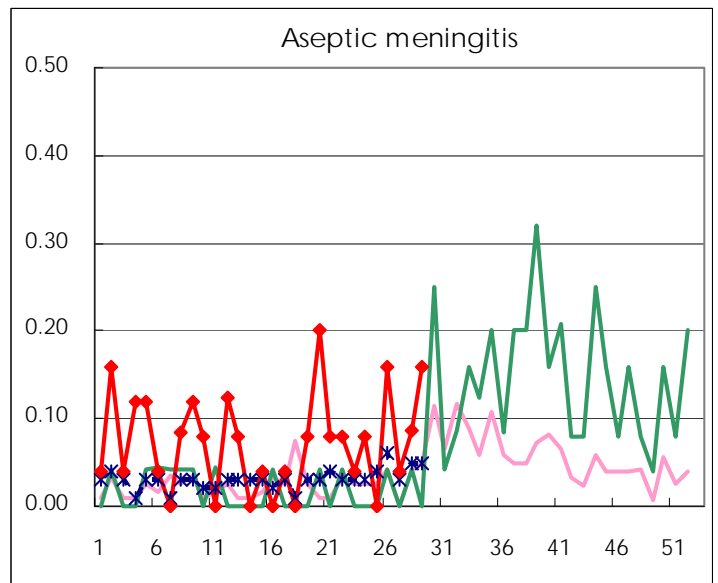
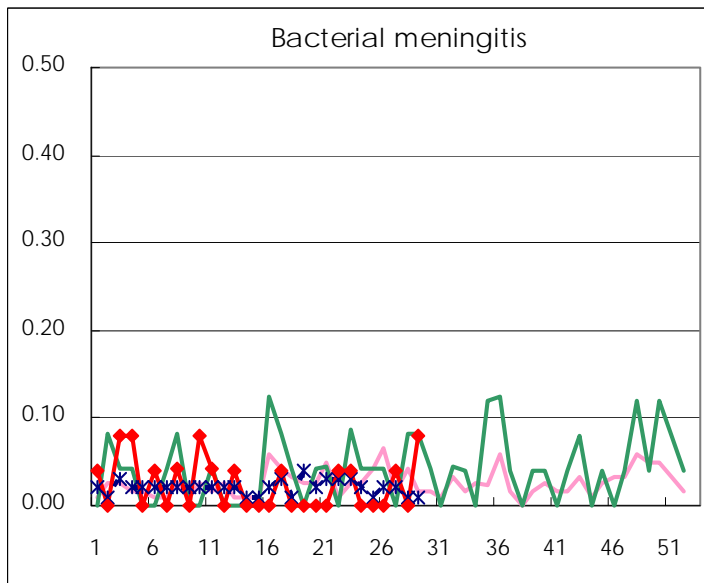
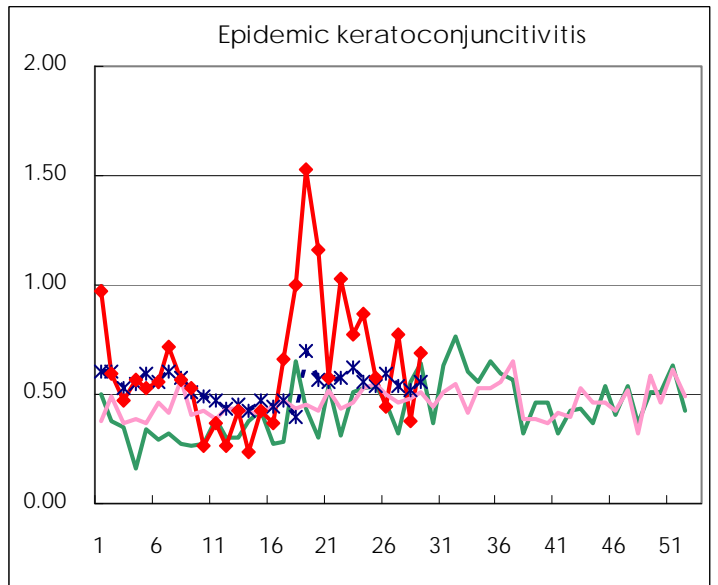
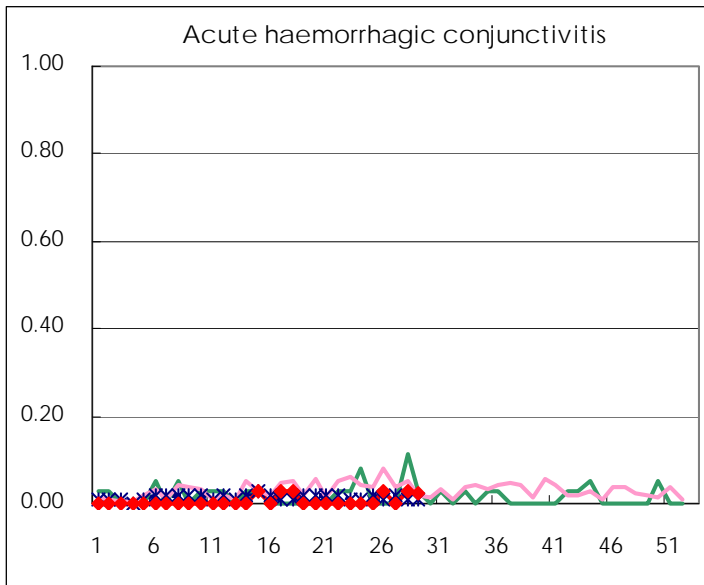
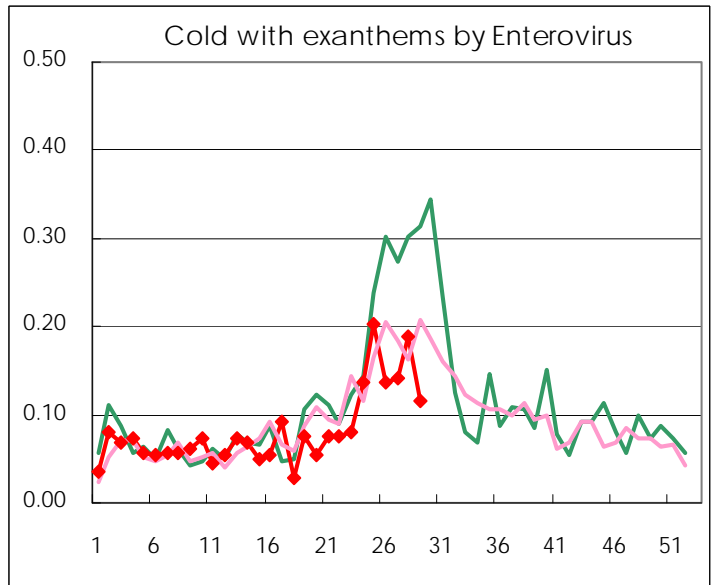
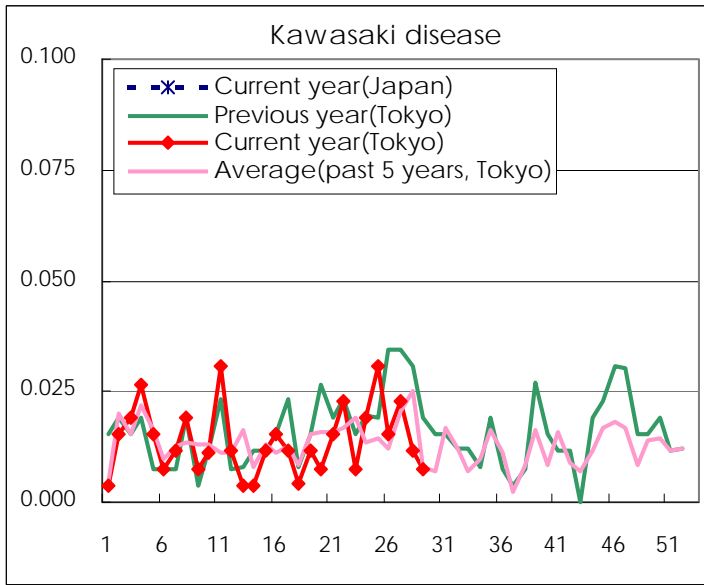
Diseases	Tokyo				
	26th	27th	28th	29th	/sentinel
Respiratory syncytial virus infection	26	33	28	49	0.19
Pharyngoconjunctival fever	192	189	172	160	0.61
Group A streptococcal pharyngitis	759	633	572	369	1.41
Infectious gastroenteritis	1,946	1,751	1,434	1,031	3.94
Chickenpox	287	219	257	147	0.56
Hand, foot, and mouth disease	258	231	358	347	1.32
Erythema infectiosum	38	66	60	36	0.14
Exanthem subitum	198	230	204	192	0.73
Pertussis	7	10	8	6	0.02
Herpangina	747	1,172	2,090	2,175	8.30
Mumps	84	105	79	82	0.31
Kawasaki disease	4	6	3	2	0.01
Cold with exanthems by Enterovirus	36	37	49	30	0.11
Influenza	3	4	21	9	0.02
Acute hemorrhagic conjunctivitis	1		1	1	0.03
Epidemic keratoconjunctivitis	17	30	14	27	0.69
Bacterial meningitis		1		2	0.08
Aseptic meningitis	4	1	2	4	0.16
Mycoplasma pneumonia	14	18	14	16	0.64
Chlamydial pneumonia (excluding psittacosis)					
Influenza-Associated Hospitalizations			1		

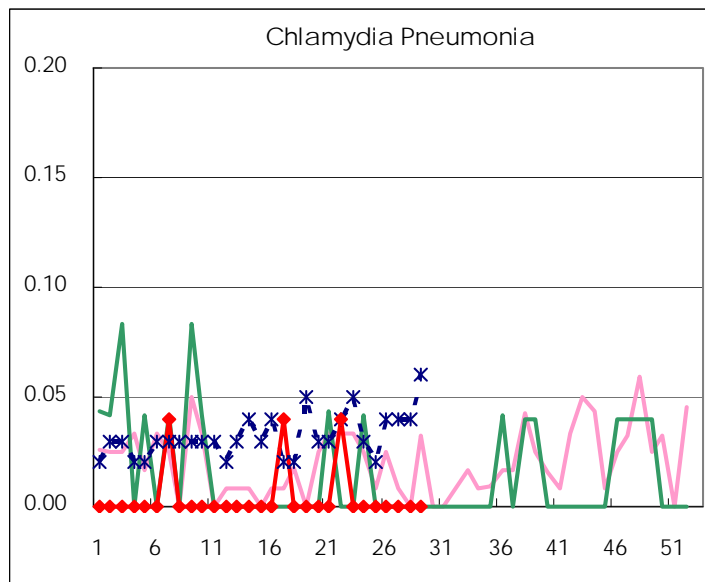
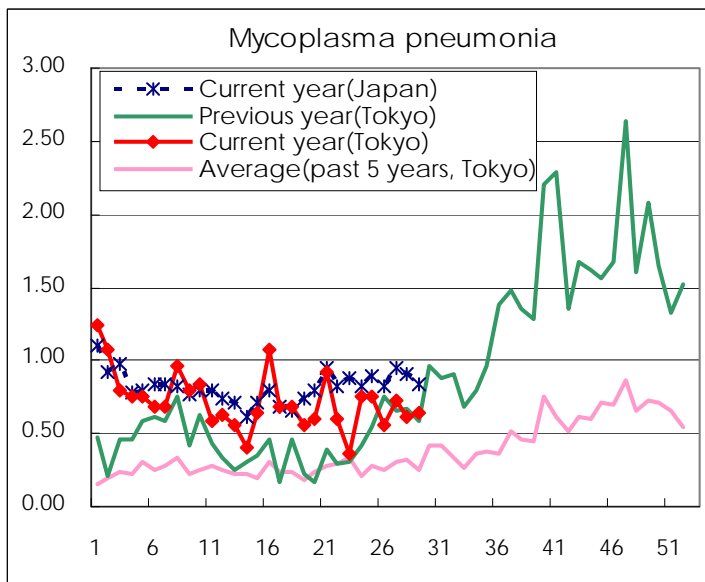
( Blank means 0. )

# Disease Trend Graph (weekly reported cases per sentinel in comparison)









Number of sentinel facilities for weekly reporting		
Types of sentinels	Number of sentinels	Sentinels having reported
Pediatric	264	262
Influenza	419	416
Ophthalmic	39	39
Specially-designated	25	25

Tokyo Metropolitan Government  
**Infectious Disease Surveillance Center**