

---

INFECTIOUS DISEASES WEEKLY REPORT

# TOKYO IDWR

Tokyo Metropolitan Infectious Disease Surveillance Center

---

## 9 August 2012 / Number 31

### Surveillance System in Tokyo, Japan

The infectious diseases which all physicians must report

All physicians must report to health centers the incidence of the diseases which are shown at page one. Health centers electronically report the individual cases to Tokyo Metropolitan Infectious Disease Surveillance Center.

The infectious diseases required to be reported by the sentinels

The numbers of patients who visit the sentinel clinics or hospitals during a week are reported to health centers in Tokyo. And they electronically report the numbers to Tokyo Metropolitan Infectious Disease Surveillance Center. We have about 500 sentinel clinics and hospitals in Tokyo.

1st Week is early January and 52nd Week is end of December.

Tokyo Metropolitan Institute of Public Health

TEL:81-3-3363-3213 FAX:81-3-5332-7365

e-mail:[idsc@tokyo-eiken.go.jp](mailto:idsc@tokyo-eiken.go.jp)

URL:[idsc.tokyo-eiken.go.jp/](http://idsc.tokyo-eiken.go.jp/)

---

## Number of patients with the diseases which all physicians must report

Category	Diseases	Tokyo				Japan		
		28th	29th	30th	31st	Cum 2012	31st	Cum 2012
I	Ebola hemorrhagic fever							
	Crimean-Congo hemorrhagic fever							
	Smallpox							
	South American hemorrhagic fever							
	Plague							
	Marburg disease							
	Lassa fever							
II	Acute poliomyelitis							
	Tuberculosis	113	94	79	85	2,717	351	17,182
	Diphtheria							
	Severe Acute Respiratory Syndrome(SARS)							
	Avian influenza H5N1							
III	Cholera							3
	Shigellosis		1		3	39	8	121
	Enterohemorrhagic Escherichia coli infection	10	7	7	9	100	130	1,511
	Typhoid fever					5		15
	Paratyphoid fever					5	1	11
IV	Hepatitis E		1	1		11	2	83
	West Nile fever							
	Hepatitis A		1	1		25	1	117
	Echinococcosis							6
	Yellow fever							
	Psittacosis							5
	Omsk hemorrhagic fever							
	Relapsing fever							
	Kyasanur forest disease							
	Q fever							
	Rabies							
	Coccidioidomycosis							1
	Monkeypox							
	Hemorrhagic fever with renal syndrome							
	Western equine encephalitis							
	Tick-borne encephalitis							
	Anthrax							
	Chikungunya fever							3
	Scrub typhus(Tsutsugamushi disease)					3	1	193
	Dengue fever				1	21	5	84
	Eastern equine encephalitis							
	Avian influenza (excluding H5N1)							
	Nipah virus infection							
	Japanese spotted fever						3	51
	Japanese encephalitis							
	Hantavirus pulmonary syndrome							
	Herpes B virus infection							
	Glanders							
	Brucellosis							
	Venezuelan equine encephalitis							
	Hendra virus infection							
	Epidemic typhus							
Botulism							3	
Malaria						11	1	40
Tularemia								
Lyme disease							5	
Lyssavirus infection(excluding rabies)								
Rift valley fever								
Melioidosis								
Legionellosis	1		2		35	13	501	
Leptospirosis					3		8	
Rocky mountain spotted fever								

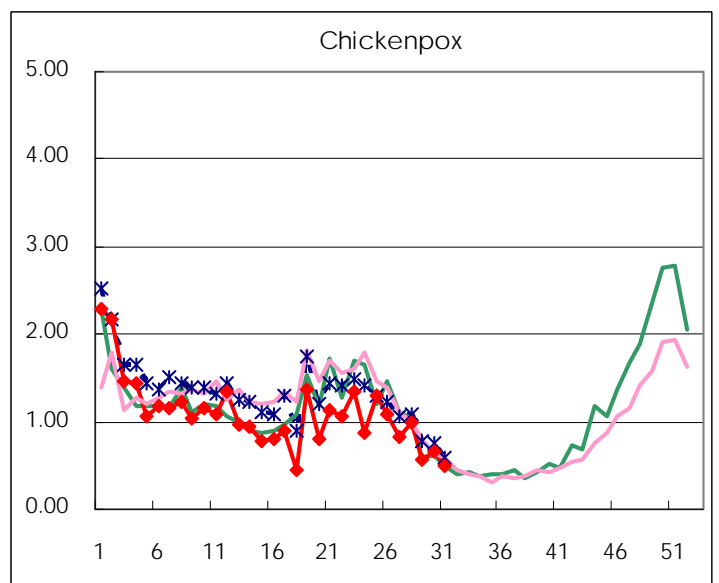
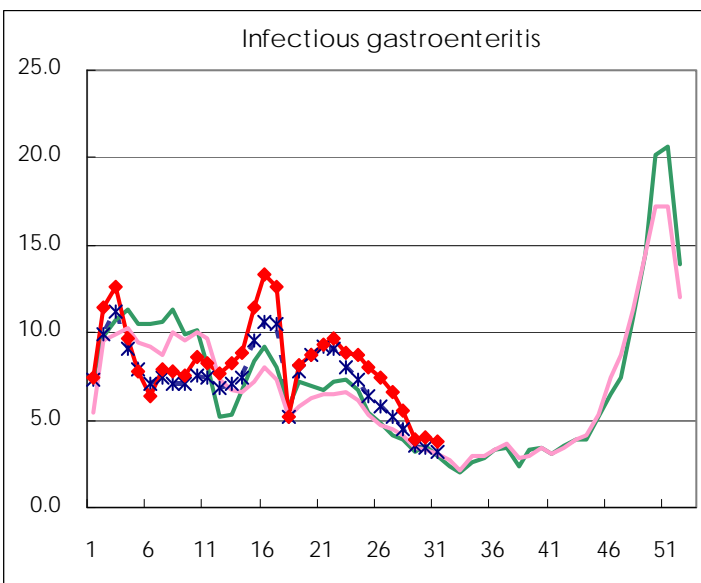
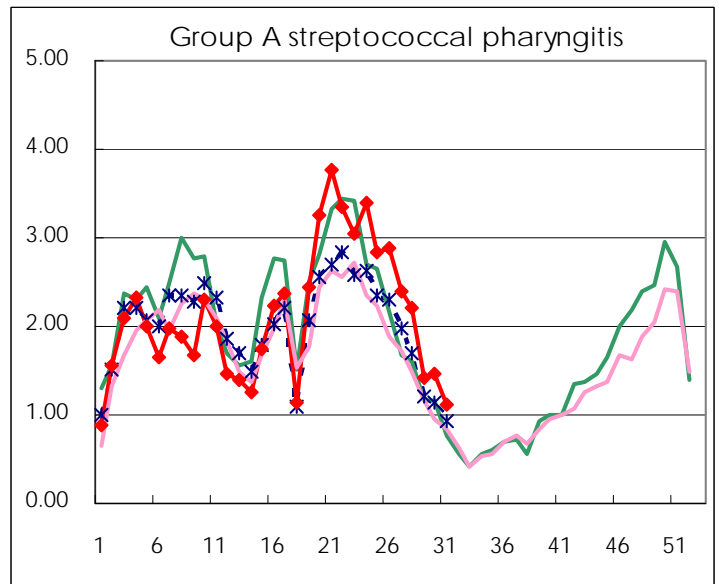
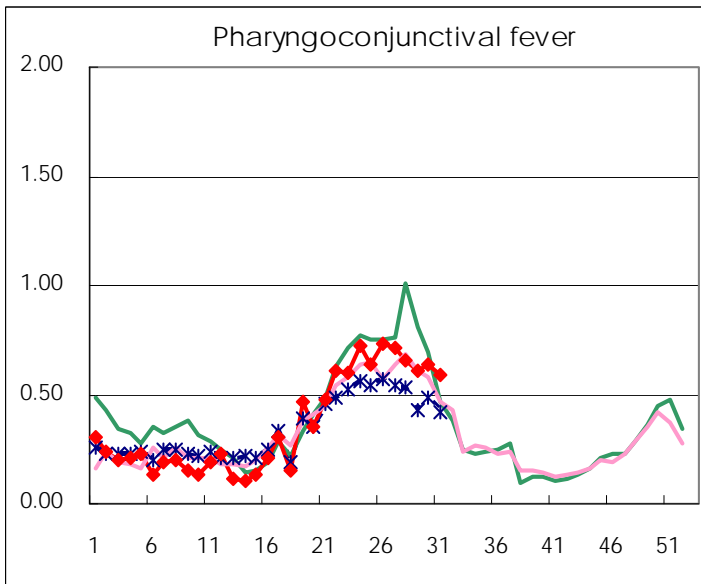
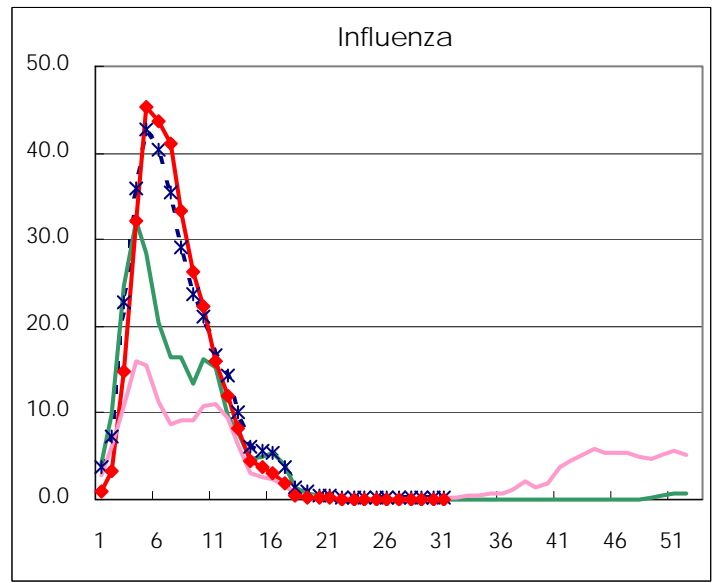
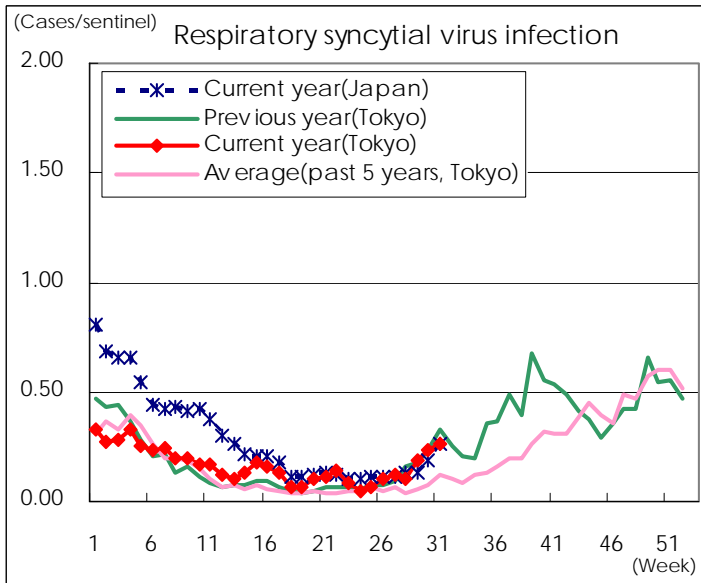
Category	Diseases	Tokyo				Japan		
		28th	29th	30th	31st	Cum 2012	31st	Cum 2012
V	Amebiasis	2	3	3	3	100	14	506
	Viral hepatitis(excluding hepatitis A and E)	1			1	29	2	128
	Acute encephalitis(excluding JE and WNE)	1	1	2		20	3	241
	Cryptosporidiosis					2		6
	Creutzfeldt-Jakob disease			1		8	2	108
	Severe invasive streptococcal infections(TSLS)		1	1		12		155
	Acquired immunodeficiency syndrome (AIDS)	15	7	8	7	272	12	807
	Giardiasis	1				8	1	32
	Meningococcal meningitis							7
	Congenital rubella syndrome							
	Syphilis	1	4	5	4	160	13	492
	Tetanus					3		60
	Vancomycin-resistant S. aureus infection							
	Vancomycin-resistant Enterococcus infection				1	7	2	55
	Rubella	32	22	37	32	236	82	1016
Measles	6	3	7	6	53	9	210	

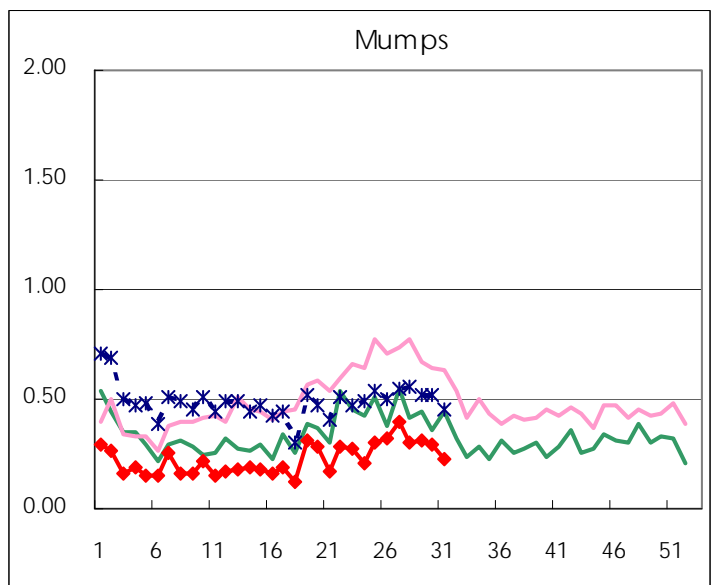
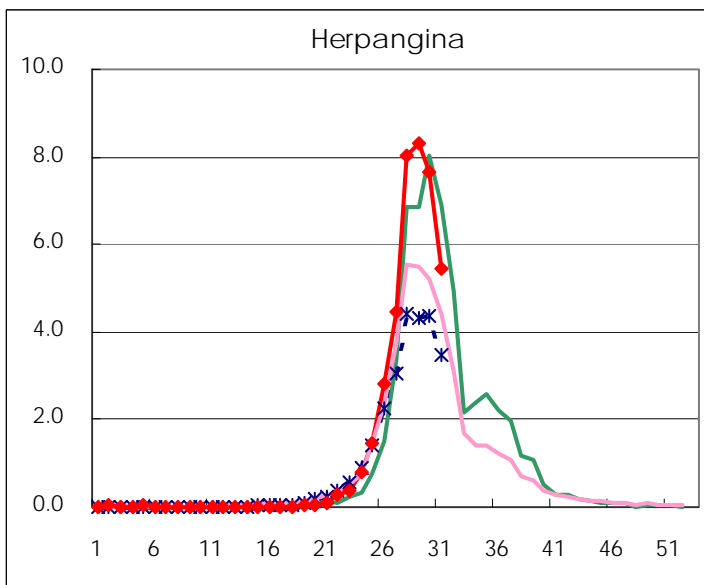
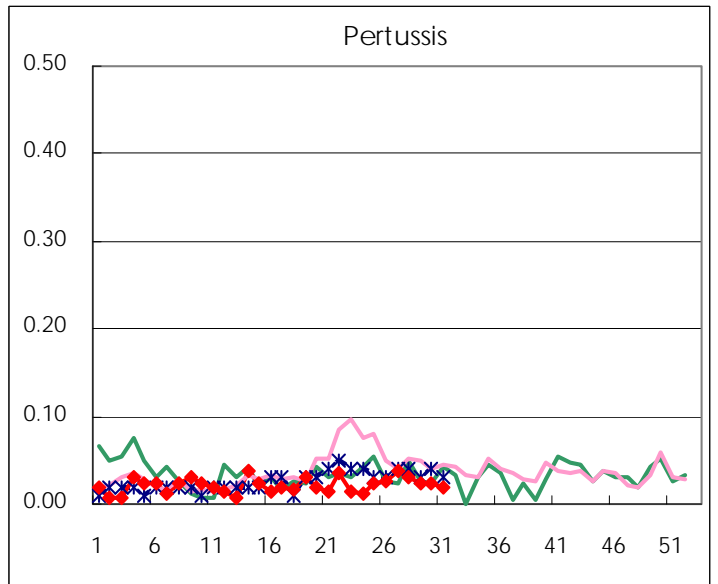
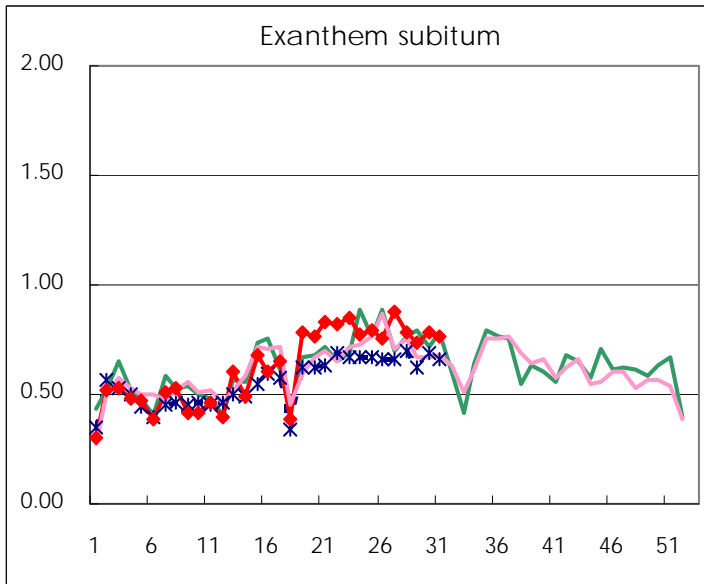
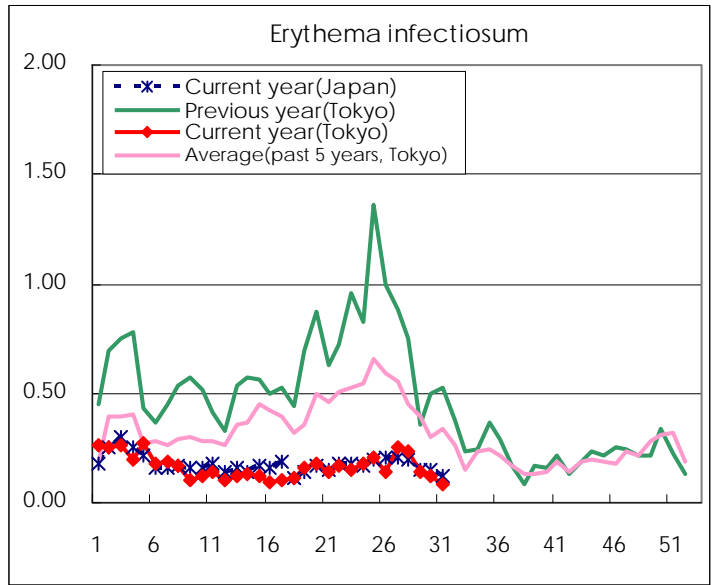
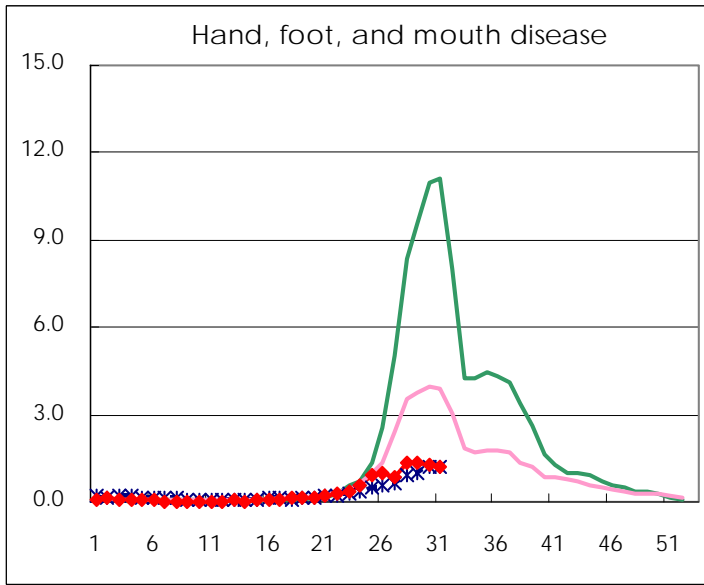
Number of patients with the diseases to be reported  
by the designated clinics and hospitals

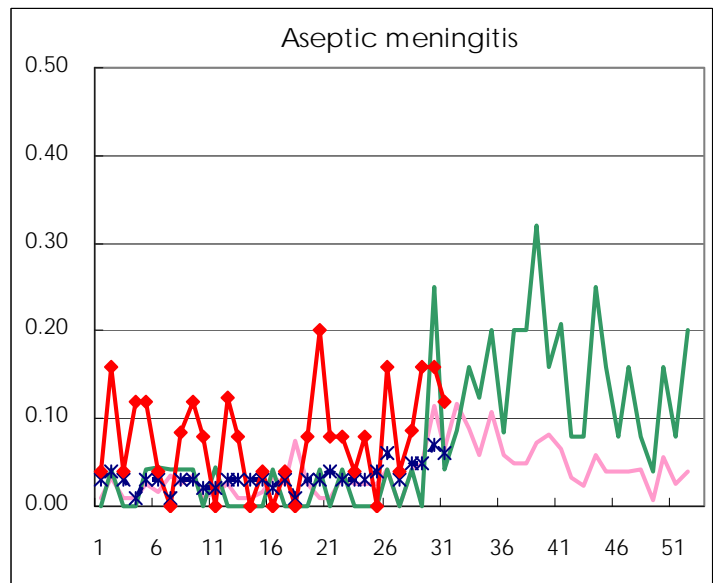
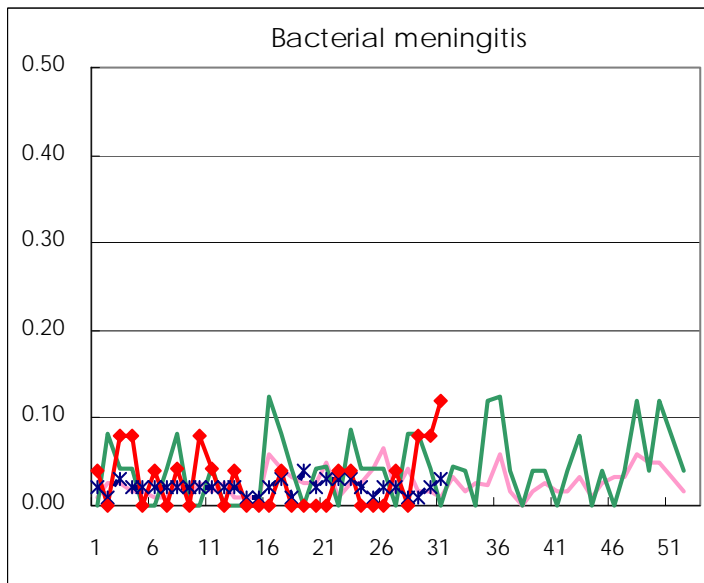
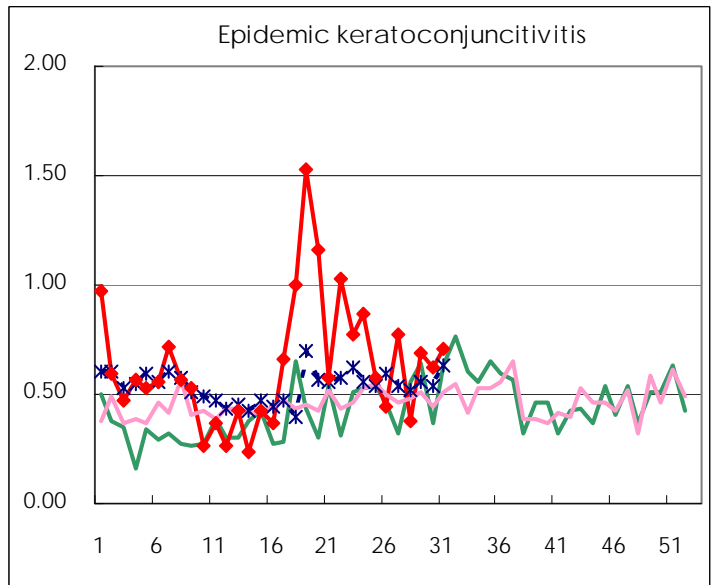
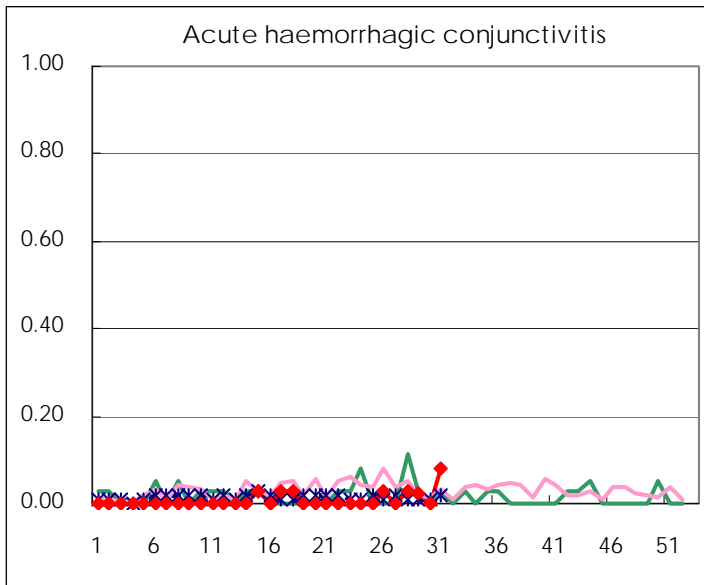
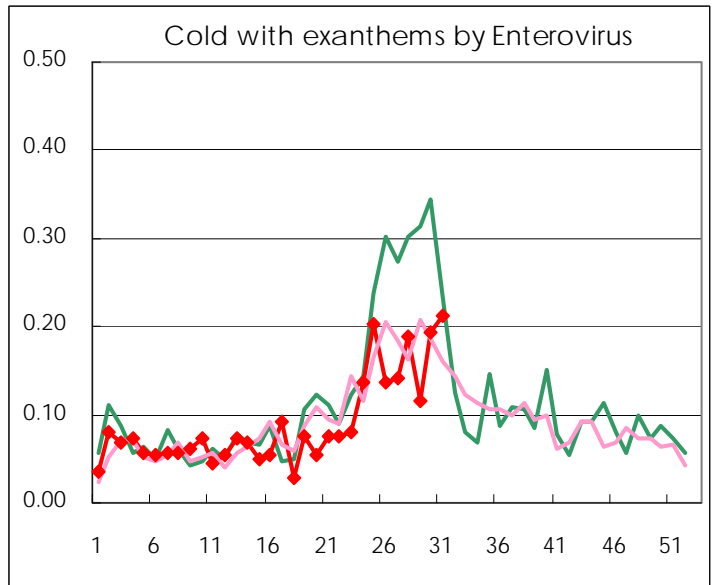
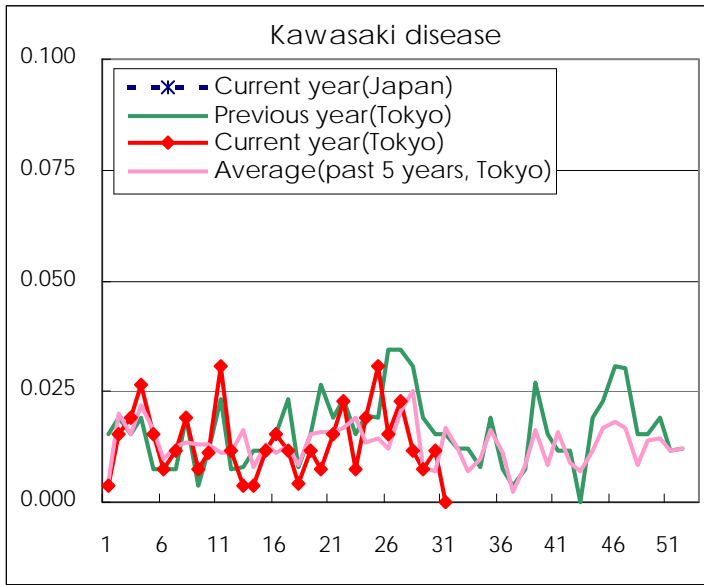
Diseases	Tokyo				
	28th	29th	30th	31st	/sentinel
Respiratory syncytial virus infection	28	49	61	69	0.27
Pharyngoconjunctival fever	172	160	167	152	0.59
Group A streptococcal pharyngitis	572	369	388	287	1.11
Infectious gastroenteritis	1,434	1,031	1,052	982	3.79
Chickenpox	257	147	175	128	0.49
Hand, foot, and mouth disease	358	347	333	306	1.18
Erythema infectiosum	60	36	33	21	0.08
Exanthem subitum	204	192	205	197	0.76
Pertussis	8	6	6	5	0.02
Herpangina	2,090	2,175	2,010	1,407	5.43
Mumps	79	82	77	59	0.23
Kawasaki disease	3	2	3		
Cold with exanthems by Enterovirus	49	30	51	55	0.21
Influenza	21	9	6	5	0.01
Acute hemorrhagic conjunctivitis	1	1		3	0.08
Epidemic keratoconjunctivitis	14	27	23	27	0.71
Bacterial meningitis		2	2	3	0.12
Aseptic meningitis	2	4	4	3	0.12
Mycoplasma pneumonia	14	16	22	6	0.24
Chlamydial pneumonia (excluding psittacosis)					
Influenza-Associated Hospitalizations	1			2	0.08

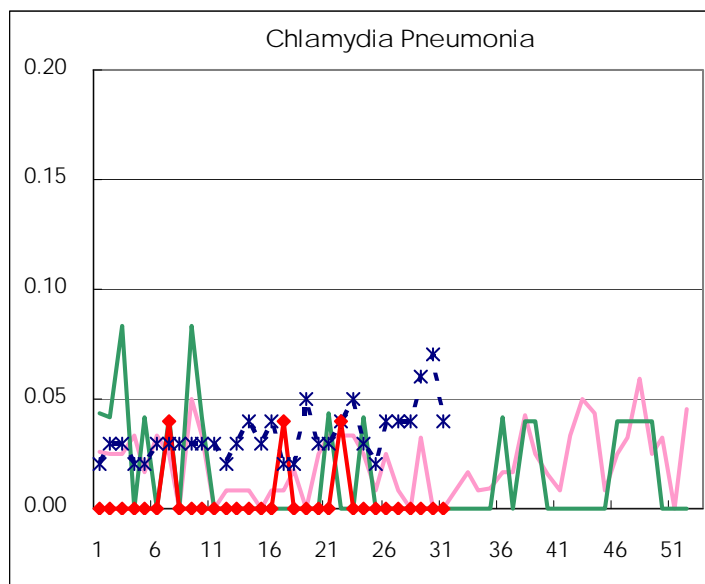
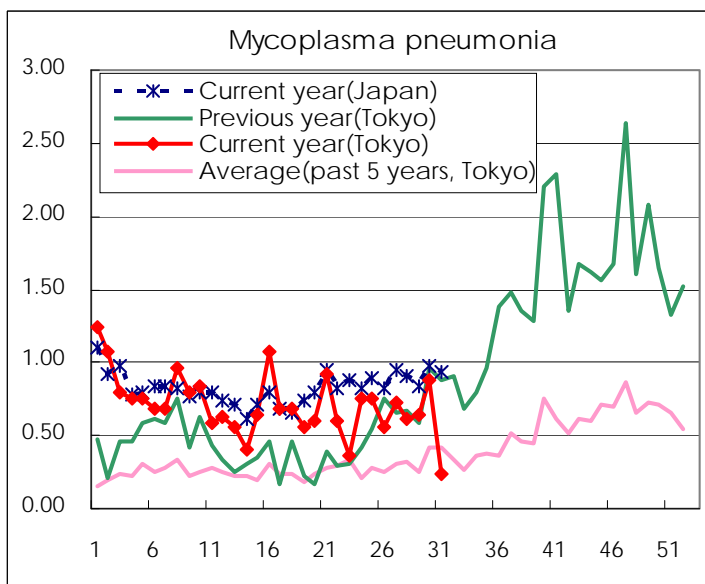
( Blank means 0. )

# Disease Trend Graph (weekly reported cases per sentinel in comparison)









Number of sentinel facilities for weekly reporting		
Types of sentinels	Number of sentinels	Sentinels having reported
Pediatric	264	259
Influenza	419	412
Ophthalmic	39	38
Specially-designated	25	25

Tokyo Metropolitan Government  
**Infectious Disease Surveillance Center**