
INFECTIOUS DISEASES WEEKLY REPORT

TOKYO IDWR

Tokyo Metropolitan Infectious Disease Surveillance Center

16 August 2012 / Number 32

Surveillance System in Tokyo, Japan

The infectious diseases which all physicians must report

All physicians must report to health centers the incidence of the diseases which are shown at page one. Health centers electronically report the individual cases to Tokyo Metropolitan Infectious Disease Surveillance Center.

The infectious diseases required to be reported by the sentinels

The numbers of patients who visit the sentinel clinics or hospitals during a week are reported to health centers in Tokyo. And they electronically report the numbers to Tokyo Metropolitan Infectious Disease Surveillance Center. We have about 500 sentinel clinics and hospitals in Tokyo.

1st Week is early January and 52nd Week is end of December.

Tokyo Metropolitan Institute of Public Health

TEL:81-3-3363-3213 FAX:81-3-5332-7365

e-mail:idsc@tokyo-eiken.go.jp

URL:idsc.tokyo-eiken.go.jp/

Number of patients with the diseases which all physicians must report

Category	Diseases	Tokyo				Japan			
		29th	30th	31st	32nd	Cum 2012	32nd	Cum 2012	
I	Ebola hemorrhagic fever								
	Crimean-Congo hemorrhagic fever								
	Smallpox								
	South American hemorrhagic fever								
	Plague								
	Marburg disease								
	Lassa fever								
II	Acute poliomyelitis								
	Tuberculosis	98	85	95	76	2,814	388	17,836	
	Diphtheria								
	Severe Acute Respiratory Syndrome(SARS)								
	Avian influenza H5N1								
III	Cholera							3	
	Shigellosis	1		3	4	43	6	126	
	Enterohemorrhagic Escherichia coli infection	7	7	10	9	110	246	1,782	
	Typhoid fever					5		15	
	Paratyphoid fever					5		11	
IV	Hepatitis E	1	1			11		83	
	West Nile fever								
	Hepatitis A	1	1			25		117	
	Echinococcosis							6	
	Yellow fever								
	Psittacosis							5	
	Omsk hemorrhagic fever								
	Relapsing fever								
	Kyasanur forest disease								
	Q fever								
	Rabies								
	Coccidioidomycosis							1	
	Monkeypox								
	Hemorrhagic fever with renal syndrome								
	Western equine encephalitis								
	Tick-borne encephalitis								
	Anthrax								
	Chikungunya fever							1	4
	Scrub typhus(Tsutsugamushi disease)						3	1	194
	Dengue fever			1			21	2	88
	Eastern equine encephalitis								
	Avian influenza (excluding H5N1)								
	Nipah virus infection								
	Japanese spotted fever							2	53
	Japanese encephalitis								
	Hantavirus pulmonary syndrome								
	Herpes B virus infection								
	Glanders								
	Brucellosis								
	Venezuelan equine encephalitis								
	Hendra virus infection								
Epidemic typhus									
Botulism								3	
Malaria					1	12	1	41	
Tularemia									
Lyme disease							1	6	
Lyssavirus infection(excluding rabies)									
Rift valley fever									
Melioidosis									
Legionellosis			2			35	9	511	
Leptospirosis						3		8	
Rocky mountain spotted fever									

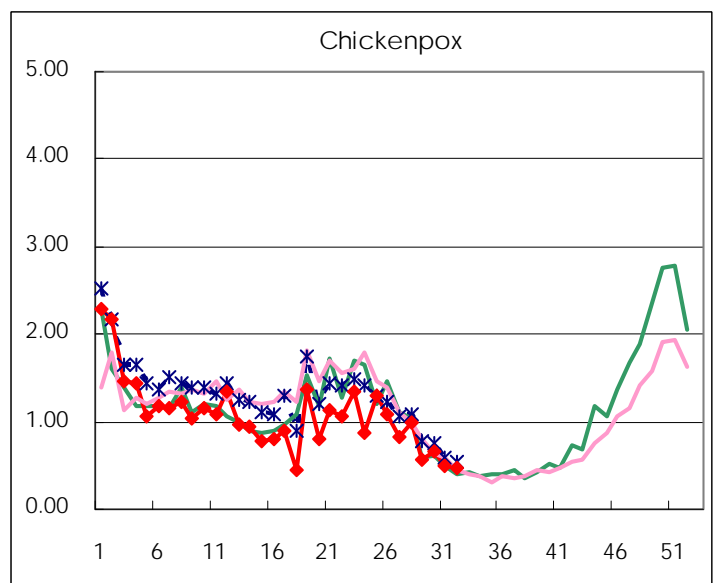
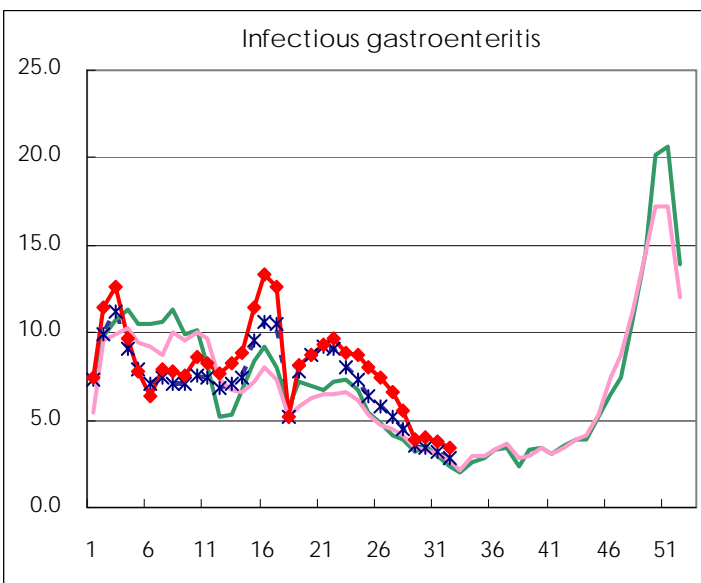
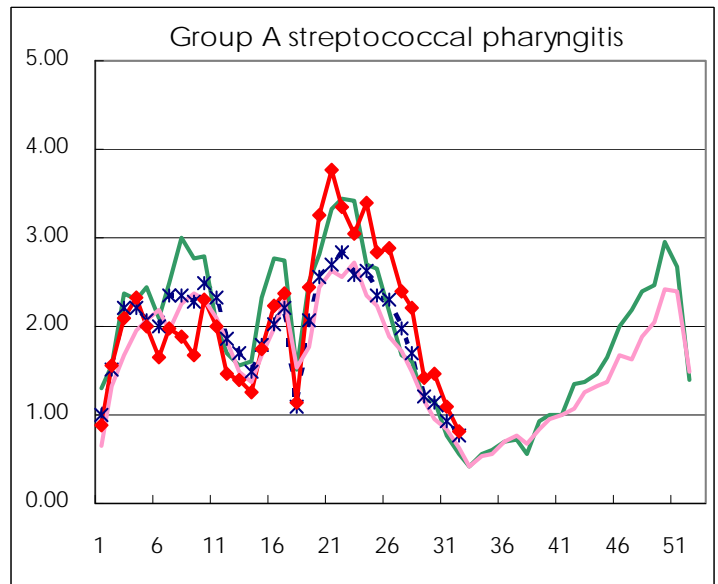
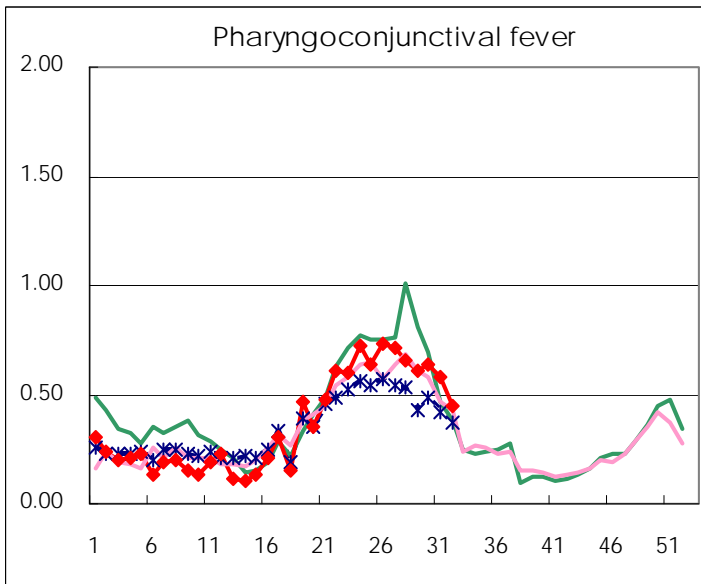
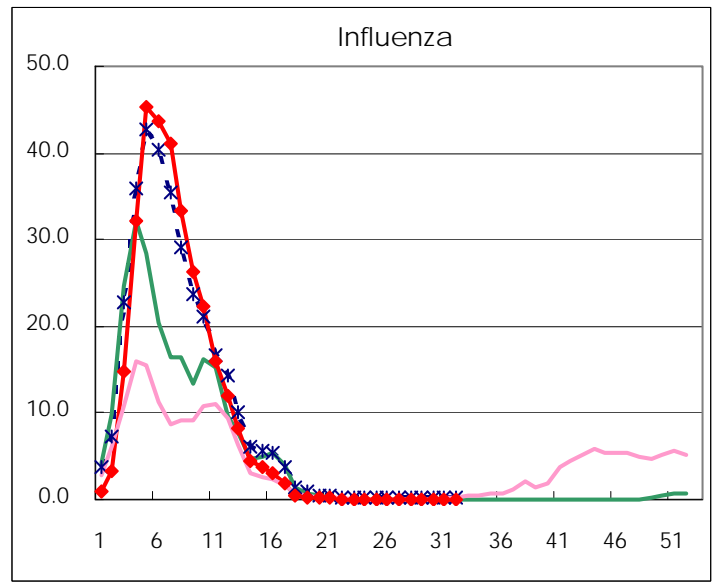
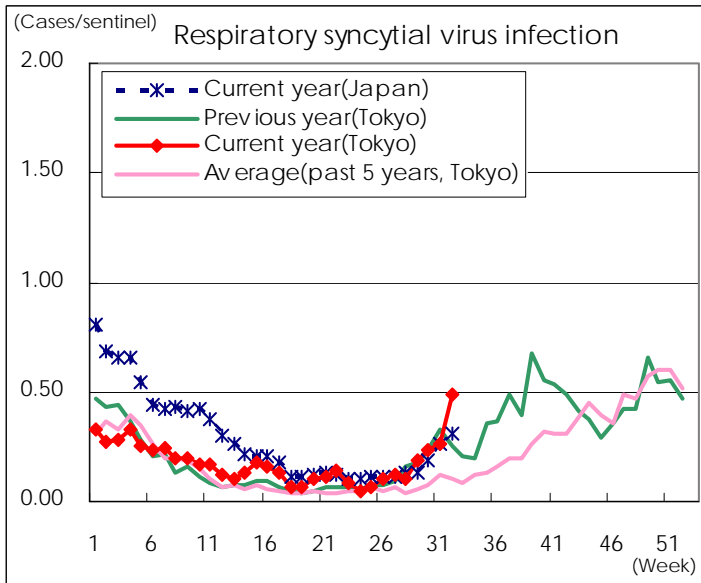
Category	Diseases	Tokyo					Japan	
		29th	30th	31st	32nd	Cum 2012	32nd	Cum 2012
V	Amebiasis	3	3	3	7	107	21	533
	Viral hepatitis(excluding hepatitis A and E)			1		29	2	133
	Acute encephalitis(excluding JE and WNE)	1	2			20	3	247
	Cryptosporidiosis					2		6
	Creutzfeldt-Jakob disease		1		1	9	4	114
	Severe invasive streptococcal infections(TSLS)	1	1		2	14	7	163
	Acquired immunodeficiency syndrome (AIDS)	7	8	7	12	284	20	850
	Giardiasis					8	3	37
	Meningococcal meningitis							7
	Congenital rubella syndrome							
	Syphilis	4	5	4	8	168	14	510
	Tetanus					3	2	63
	Vancomycin-resistant S. aureus infection							
	Vancomycin-resistant Enterococcus infection			1		7		55
	Rubella	22	37	31	24	259	66	1112
Measles	3	7	6	3	56	12	222	

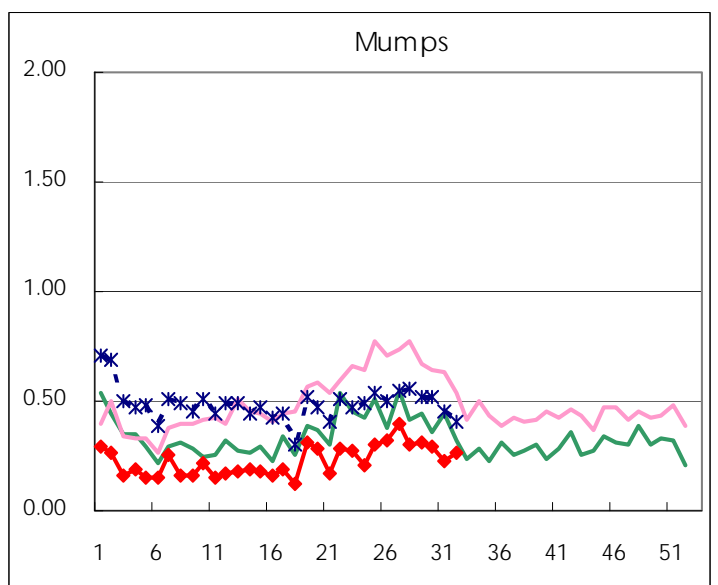
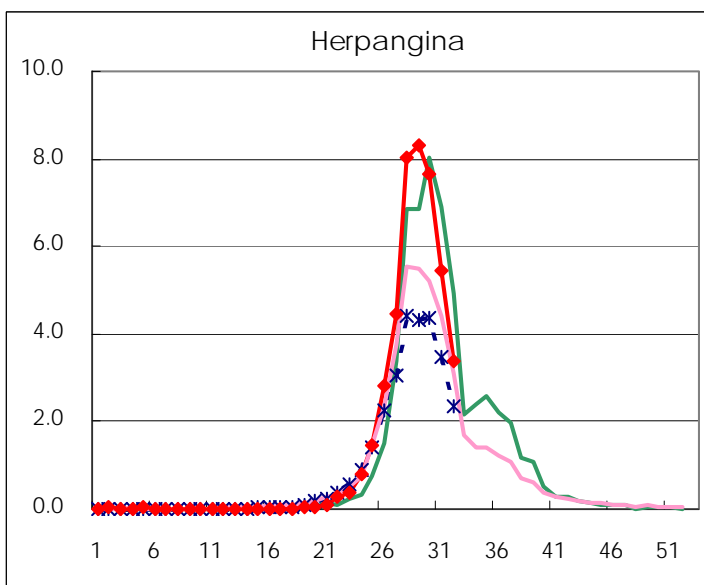
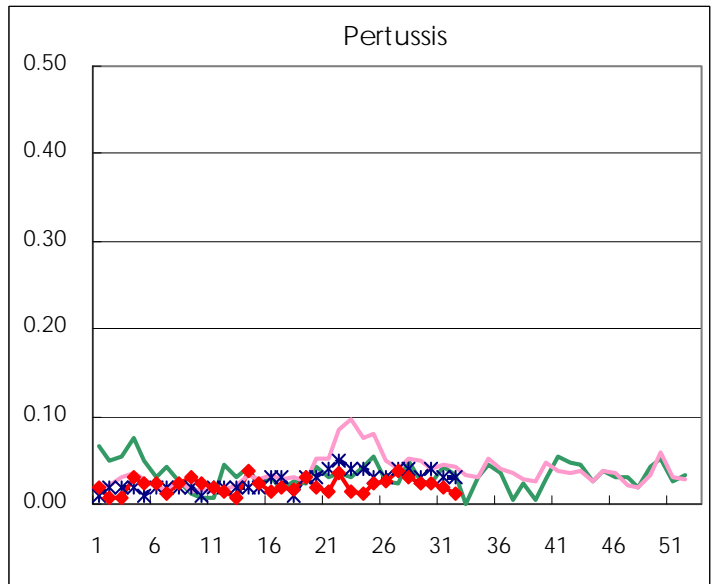
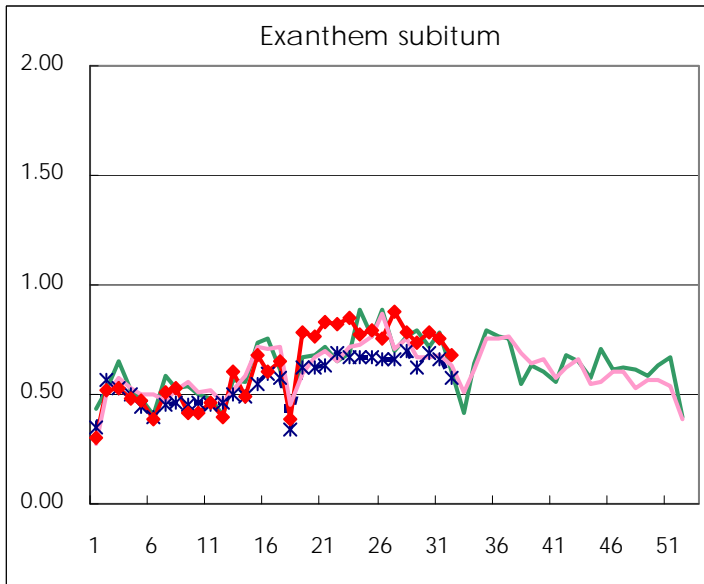
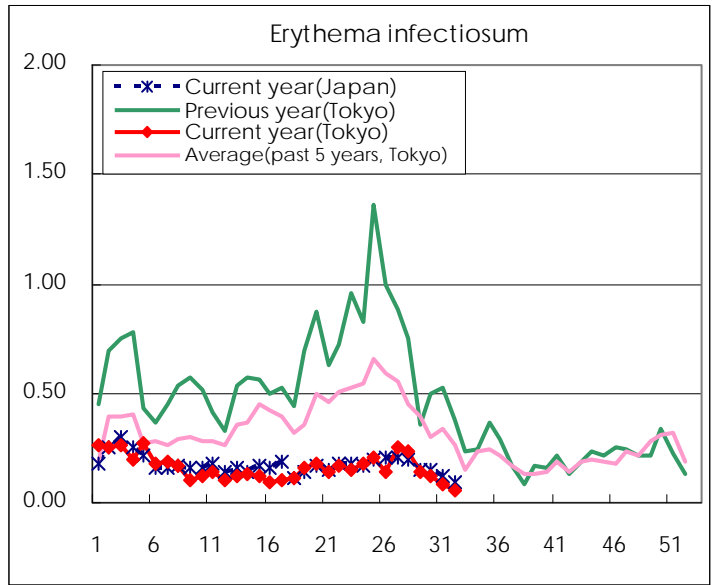
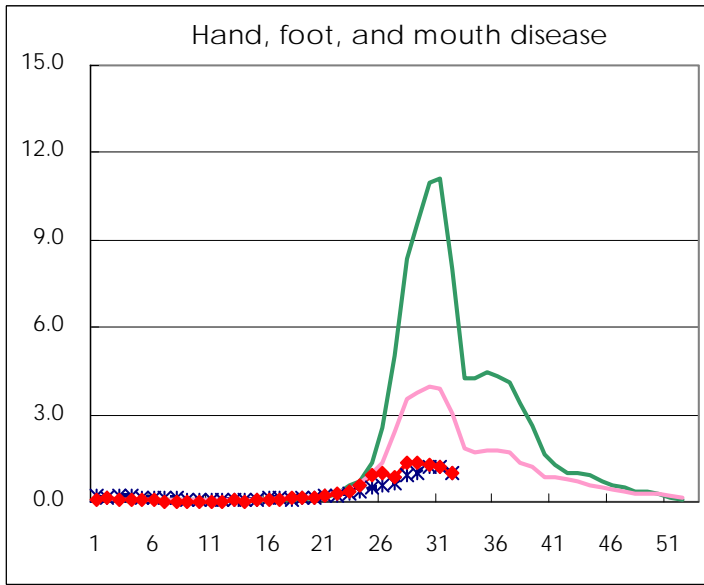
Number of patients with the diseases to be reported
by the designated clinics and hospitals

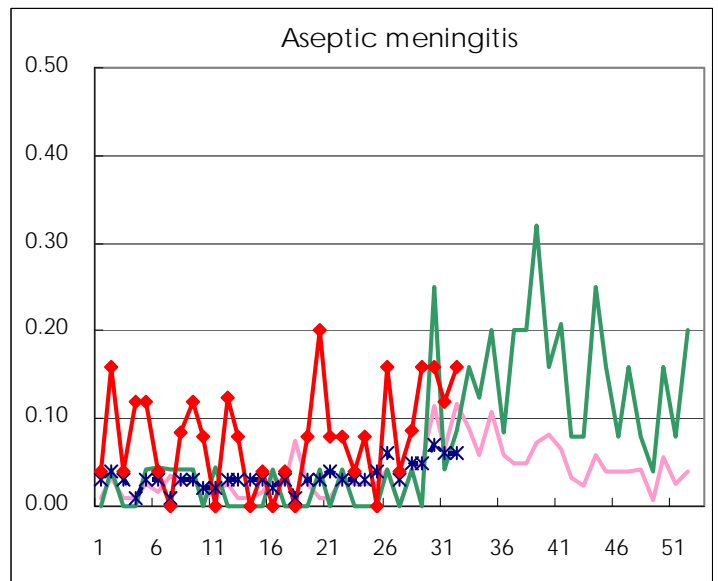
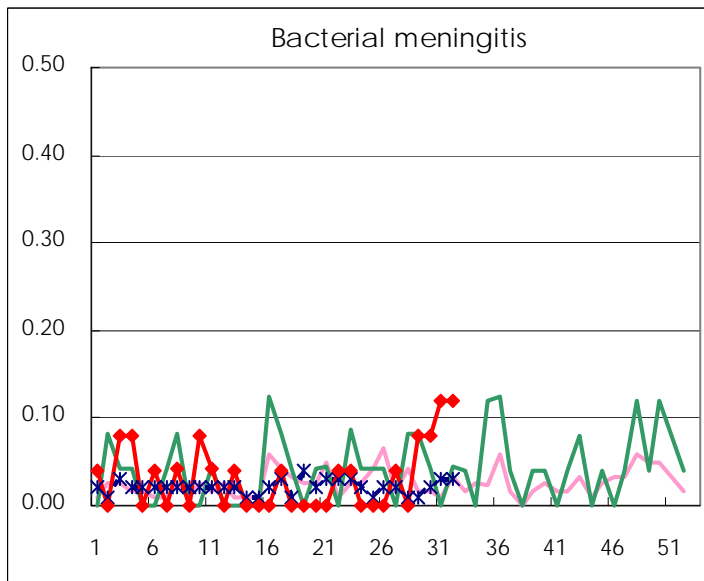
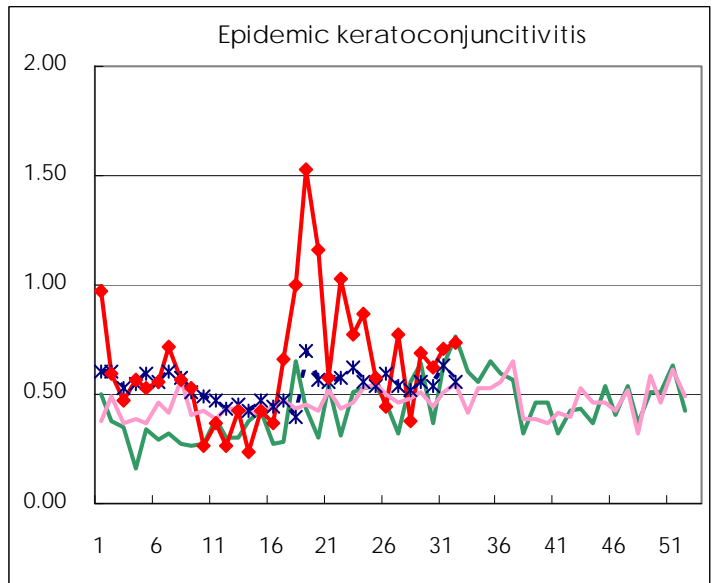
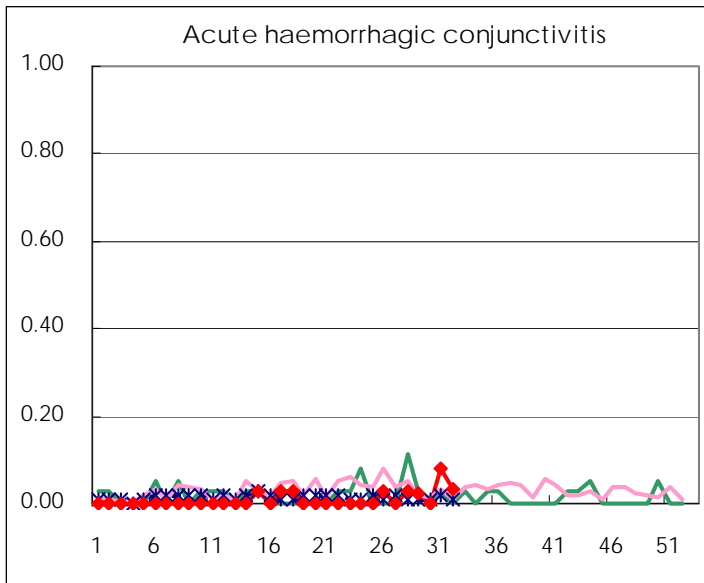
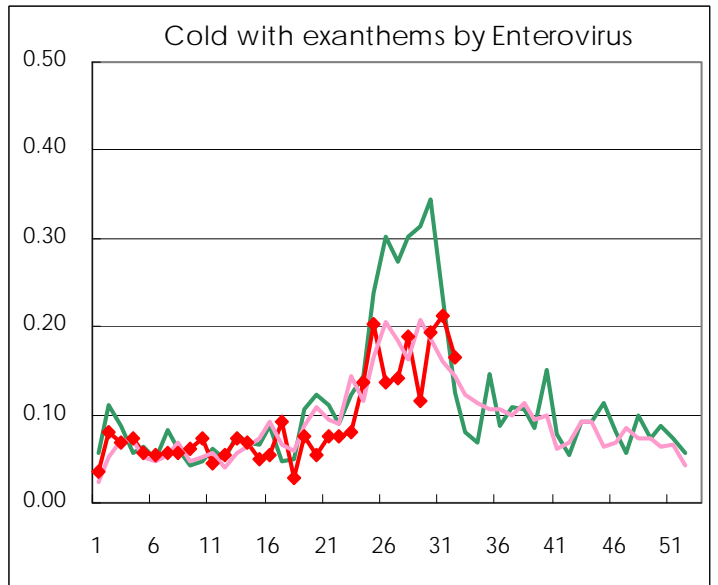
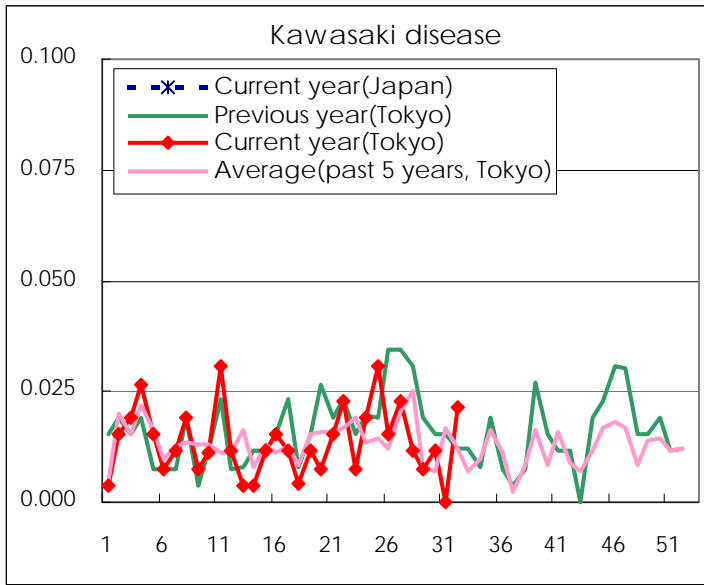
Diseases	Tokyo					
	29th	30th	31st	32nd	/sentinel	
Respiratory syncytial virus infection	49	61	69	115	0.49	
Pharyngoconjunctival fever	160	167	152	106	0.45	
Group A streptococcal pharyngitis	369	388	287	194	0.83	
Infectious gastroenteritis	1,031	1,052	982	793	3.37	
Chickenpox	147	175	129	109	0.46	
Hand, foot, and mouth disease	347	333	308	233	0.99	
Erythema infectiosum	36	33	21	13	0.06	
Exanthem subitum	192	205	197	160	0.68	
Pertussis	6	6	5	3	0.01	
Herpangina	2,175	2,010	1,412	795	3.38	
Mumps	82	77	59	61	0.26	
Kawasaki disease	2	3		5	0.02	
Cold with exanthems by Enterovirus	30	51	55	39	0.17	
Influenza	9	6	5	4	0.01	
Acute hemorrhagic conjunctivitis	1		3	1	0.03	
Epidemic keratoconjunctivitis	27	23	27	22	0.73	
Bacterial meningitis	2	2	3	3	0.12	
Aseptic meningitis	4	4	3	4	0.16	
Mycoplasma pneumonia	16	22	6	17	0.68	
Chlamydial pneumonia (excluding psittacosis)				1	0.04	
Influenza-Associated Hospitalizations			2			

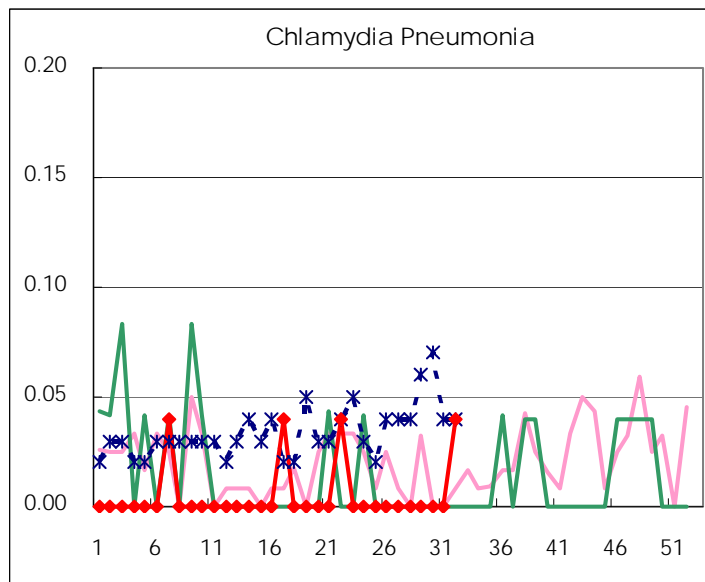
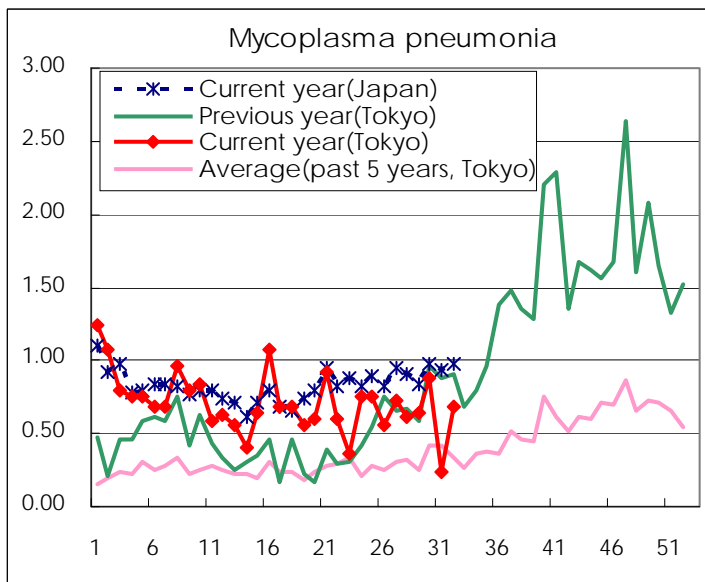
(Blank means 0.)

Disease Trend Graph (weekly reported cases per sentinel in comparison)









Number of sentinel facilities for weekly reporting		
Types of sentinels	Number of sentinels	Sentinels having reported
Pediatric	264	235
Influenza	419	354
Ophthalmic	39	30
Specially-designated	25	25

Tokyo Metropolitan Government
Infectious Disease Surveillance Center