
INFECTIOUS DISEASES WEEKLY REPORT

TOKYO IDWR

Tokyo Metropolitan Infectious Disease Surveillance Center

23 August 2012 / Number 33

Surveillance System in Tokyo, Japan

The infectious diseases which all physicians must report

All physicians must report to health centers the incidence of the diseases which are shown at page one. Health centers electronically report the individual cases to Tokyo Metropolitan Infectious Disease Surveillance Center.

The infectious diseases required to be reported by the sentinels

The numbers of patients who visit the sentinel clinics or hospitals during a week are reported to health centers in Tokyo. And they electronically report the numbers to Tokyo Metropolitan Infectious Disease Surveillance Center. We have about 500 sentinel clinics and hospitals in Tokyo.

1st Week is early January and 52nd Week is end of December.

Tokyo Metropolitan Institute of Public Health

TEL:81-3-3363-3213 FAX:81-3-5332-7365

e-mail:idsc@tokyo-eiken.go.jp

URL:idsc.tokyo-eiken.go.jp/

Number of patients with the diseases which all physicians must report

Category	Diseases	Tokyo				Japan		
		30th	31st	32nd	33rd	Cum 2012	33rd	Cum 2012
I	Ebola hemorrhagic fever							
	Crimean-Congo hemorrhagic fever							
	Smallpox							
	South American hemorrhagic fever							
	Plague							
	Marburg disease							
	Lassa fever							
II	Acute poliomyelitis							
	Tuberculosis	85	98	85	78	2,906	357	18,346
	Diphtheria							
	Severe Acute Respiratory Syndrome(SARS)							
	Avian influenza H5N1							
III	Cholera							3
	Shigellosis		3	4	2	45	4	130
	Enterohemorrhagic Escherichia coli infection	7	10	9	14	124	238	2,062
	Typhoid fever					5	2	17
	Paratyphoid fever					5		11
IV	Hepatitis E	1				11	1	84
	West Nile fever							
	Hepatitis A	1			1	26	3	120
	Echinococcosis							6
	Yellow fever							
	Psittacosis							5
	Omsk hemorrhagic fever							
	Relapsing fever							
	Kyasanur forest disease							
	Q fever							
	Rabies							
	Coccidioidomycosis							1
	Monkeypox							
	Hemorrhagic fever with renal syndrome							
	Western equine encephalitis							
	Tick-borne encephalitis							
	Anthrax							
	Chikungunya fever							4
	Scrub typhus(Tsutsugamushi disease)					3		194
	Dengue fever		1		3	24	7	95
	Eastern equine encephalitis							
	Avian influenza (excluding H5N1)							
	Nipah virus infection							
	Japanese spotted fever						7	61
	Japanese encephalitis							
	Hantavirus pulmonary syndrome							
	Herpes B virus infection							
	Glanders							
	Brucellosis							
	Venezuelan equine encephalitis							
	Hendra virus infection							
Epidemic typhus								
Botulism							3	
Malaria			1		12		41	
Tularemia								
Lyme disease						1	7	
Lyssavirus infection(excluding rabies)								
Rift valley fever								
Melioidosis								
Legionellosis	2			2	37	12	526	
Leptospirosis					3		8	
Rocky mountain spotted fever								

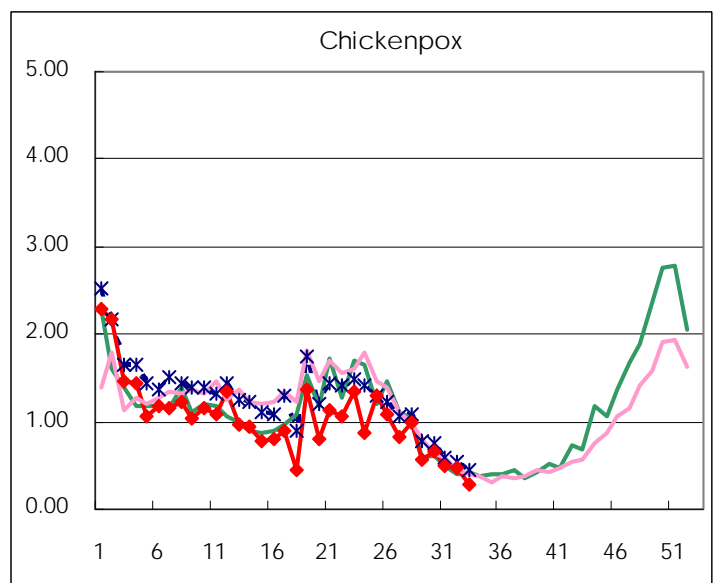
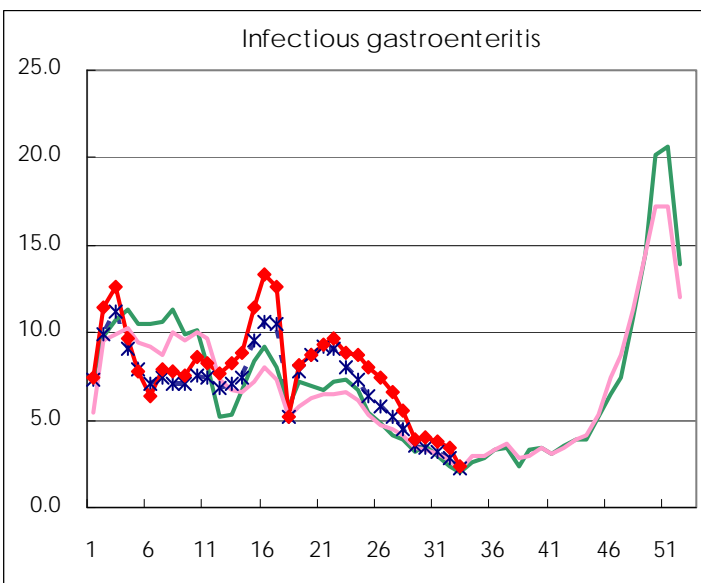
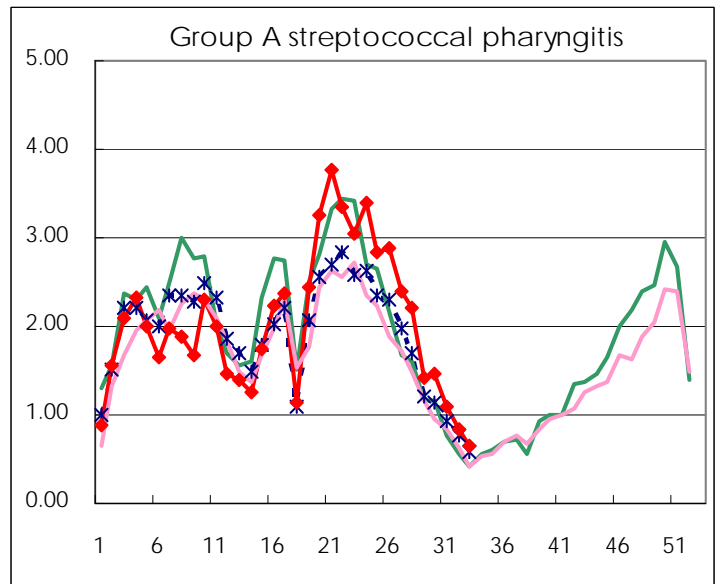
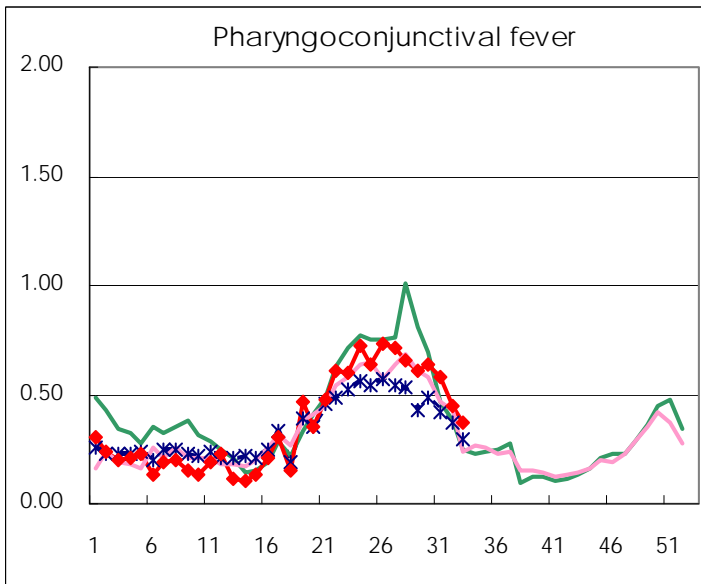
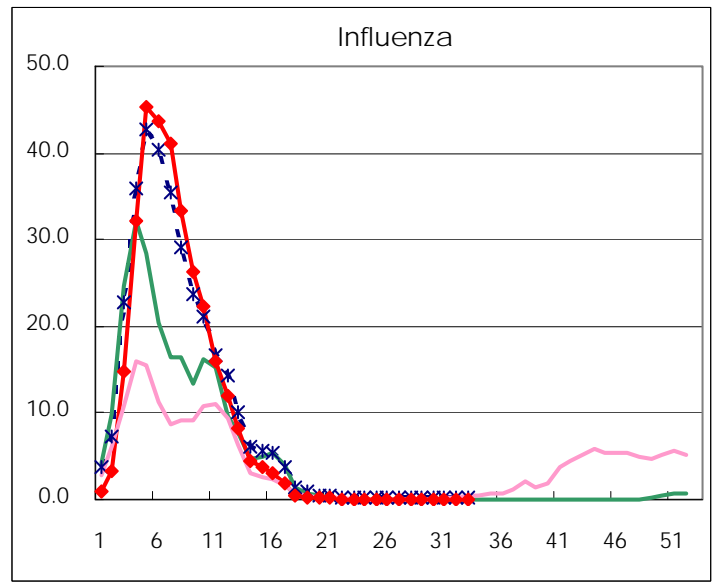
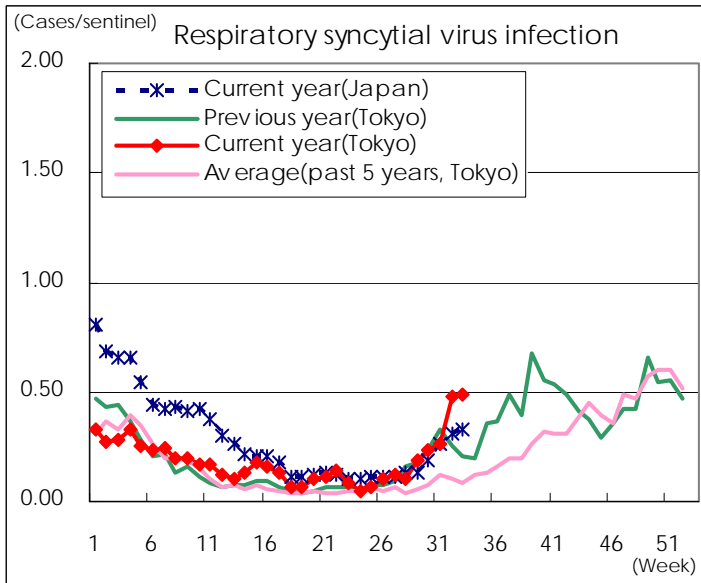
Category	Diseases	Tokyo					Japan	
		30th	31st	32nd	33rd	Cum 2012	33rd	Cum 2012
V	Amebiasis	3	3	7	3	110	8	549
	Viral hepatitis(excluding hepatitis A and E)		1			29	4	137
	Acute encephalitis(excluding JE and WNE)	2				20	3	250
	Cryptosporidiosis					2		6
	Creutzfeldt-Jakob disease	1		1		9	1	115
	Severe invasive streptococcal infections(TSLS)	1		2		14		164
	Acquired immunodeficiency syndrome (AIDS)	8	7	12	6	290	14	874
	Giardiasis					8	2	39
	Meningococcal meningitis							7
	Congenital rubella syndrome							
	Syphilis	5	4	8	3	171	8	528
	Tetanus					3	1	67
	Vancomycin-resistant S. aureus infection							
	Vancomycin-resistant Enterococcus infection		1			7	3	58
	Rubella	37	31	24	28	289	88	1239
Measles	7	6	2	3	58	6	225	

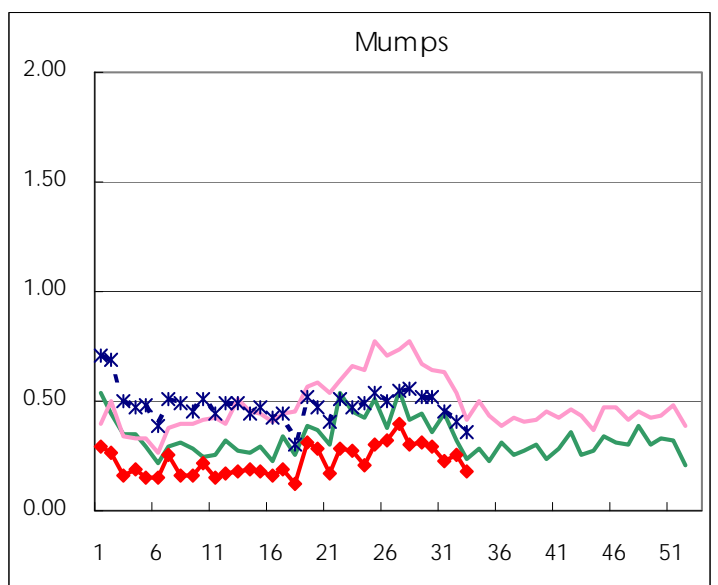
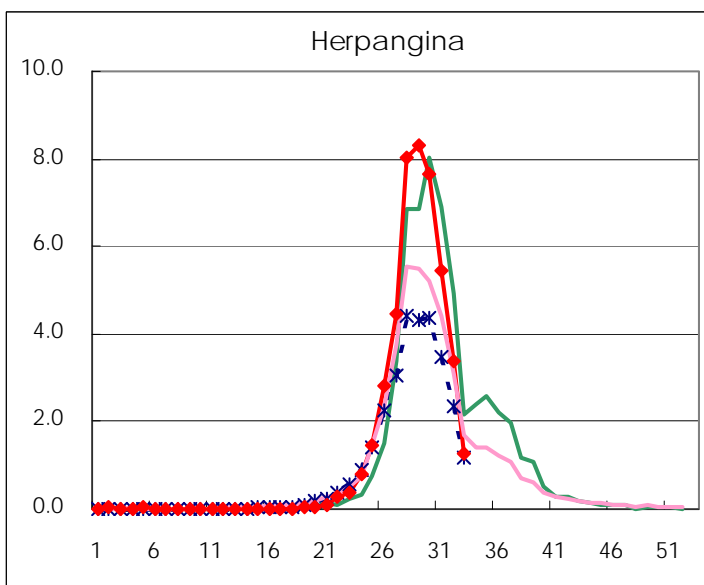
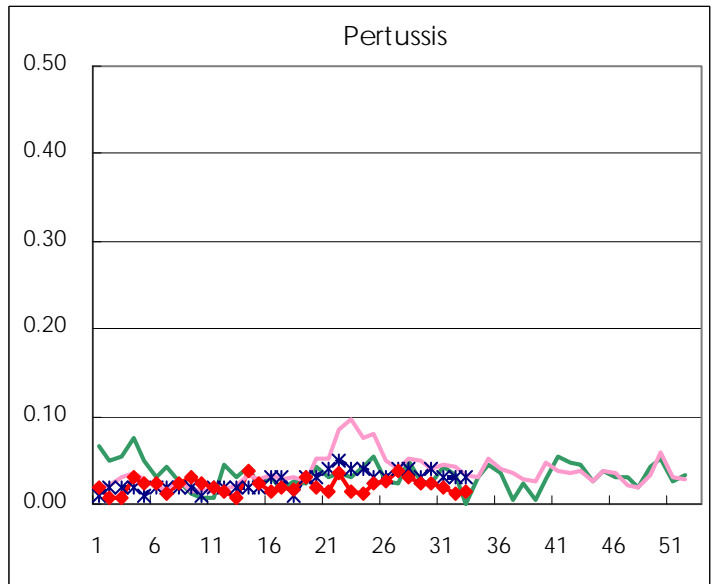
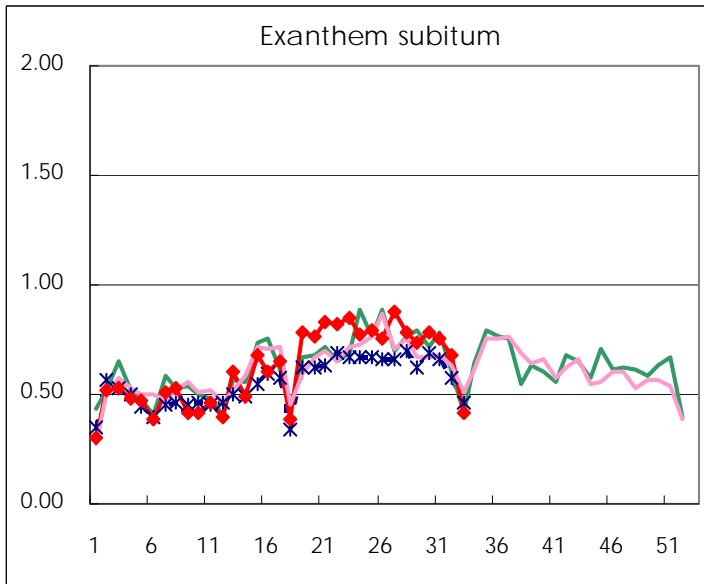
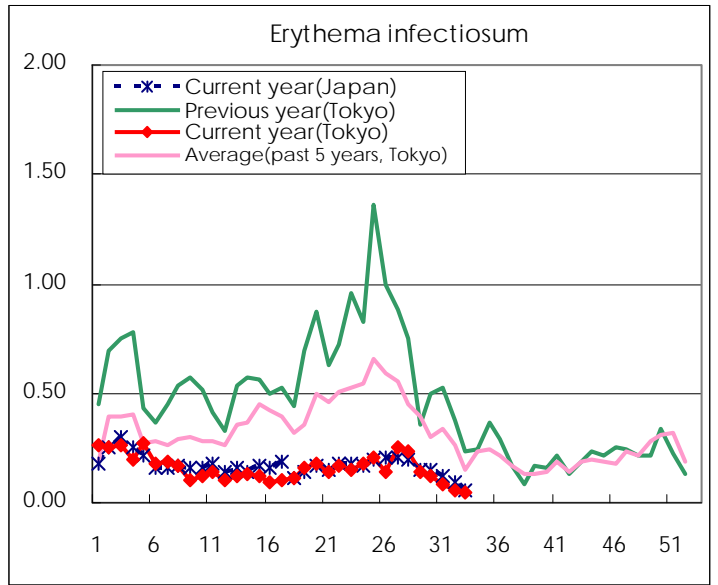
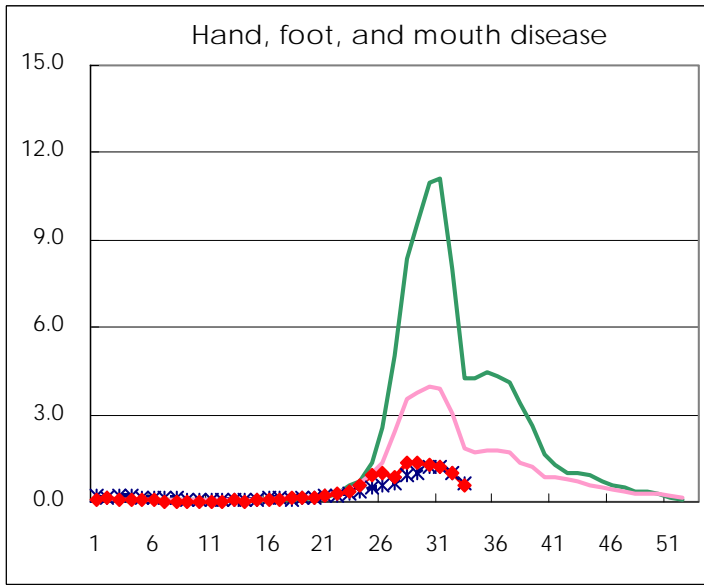
Number of patients with the diseases to be reported
by the designated clinics and hospitals

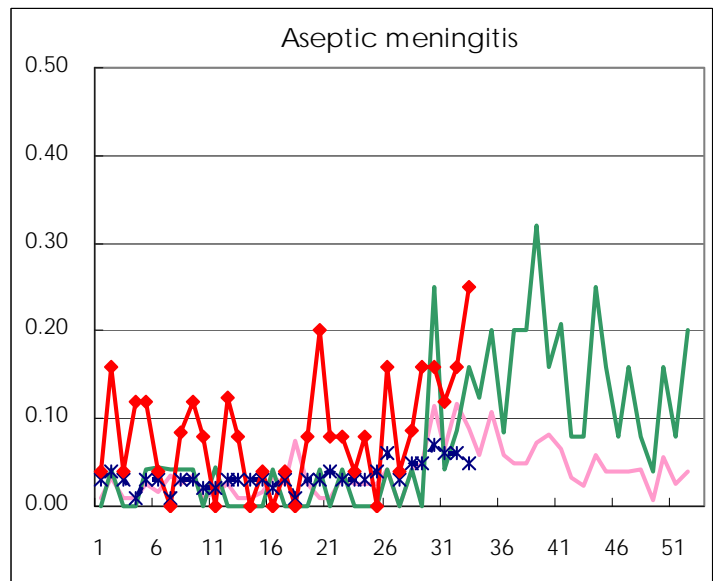
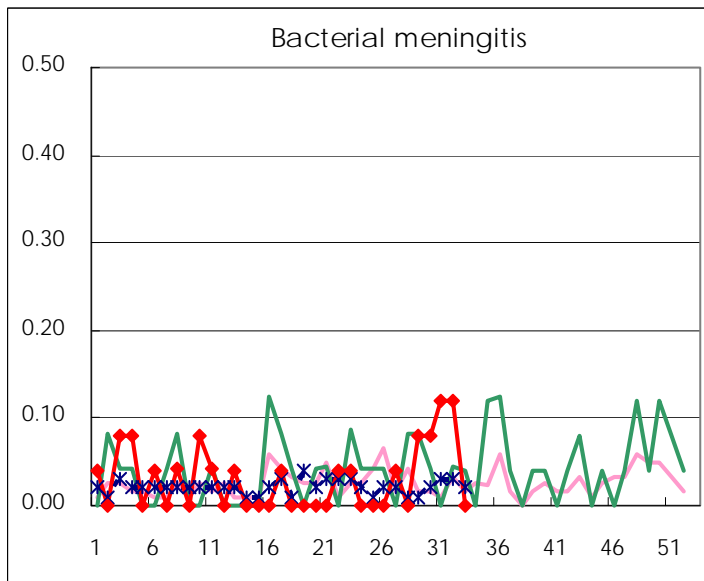
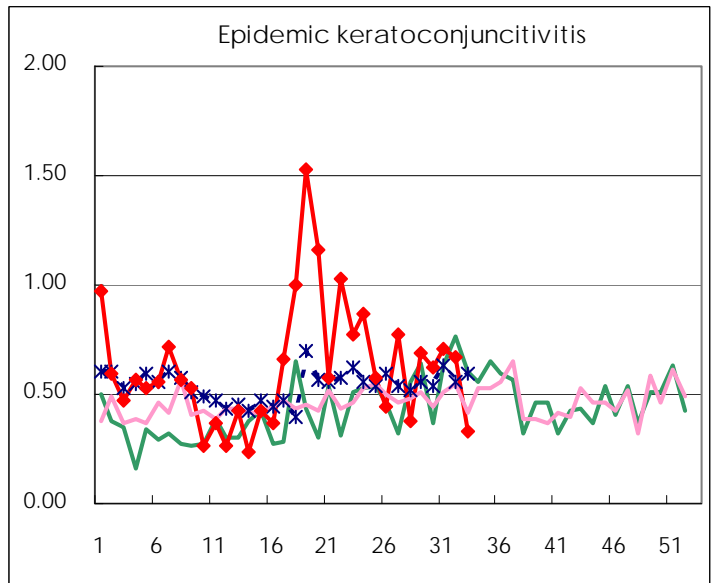
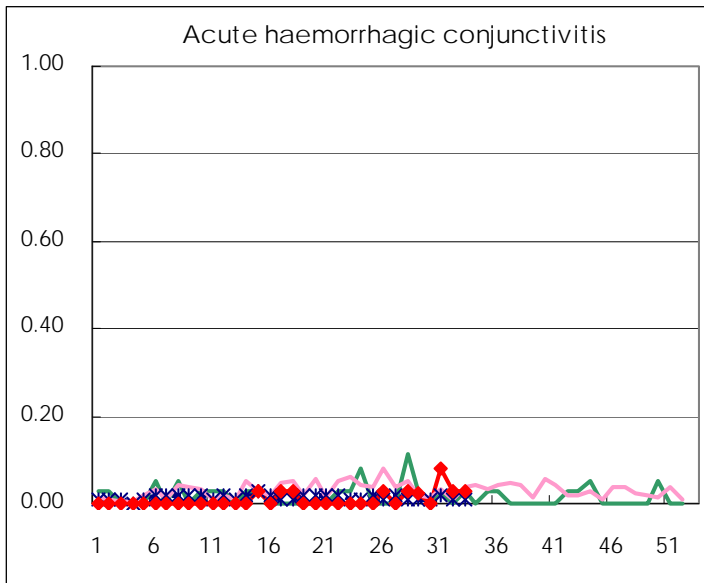
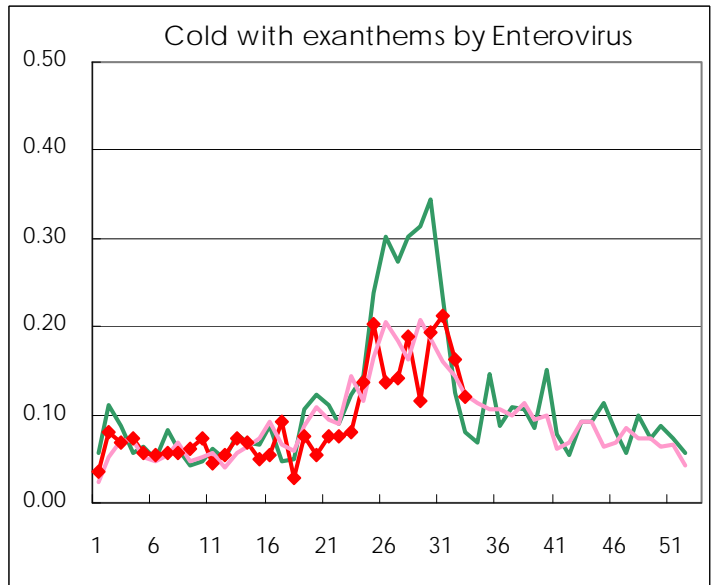
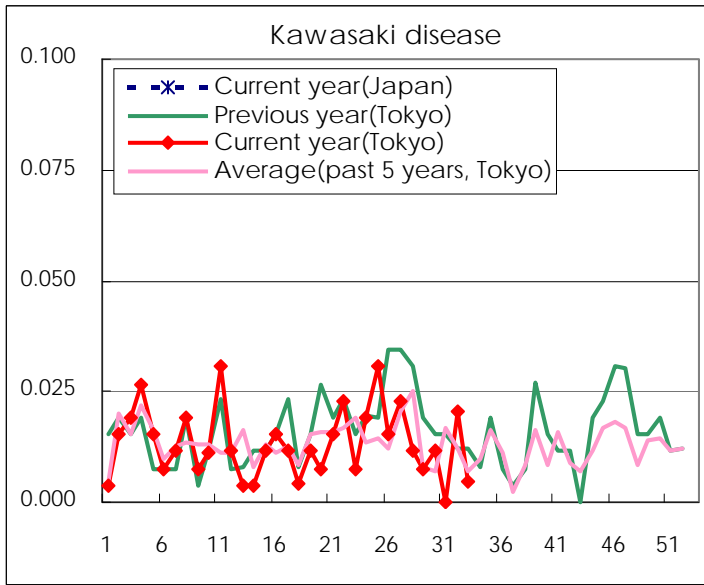
Diseases	Tokyo				
	30th	31st	32nd	33rd	/sentinel
Respiratory syncytial virus infection	61	69	117	106	0.49
Pharyngoconjunctival fever	167	152	110	80	0.37
Group A streptococcal pharyngitis	388	287	203	140	0.64
Infectious gastroenteritis	1,052	982	828	523	2.40
Chickenpox	175	129	113	63	0.29
Hand, foot, and mouth disease	333	308	244	121	0.56
Erythema infectiosum	33	21	13	10	0.05
Exanthem subitum	205	197	167	91	0.42
Pertussis	6	5	3	3	0.01
Herpangina	2,010	1,412	825	277	1.27
Mumps	77	59	63	39	0.18
Kawasaki disease	3		5	1	0.00
Cold with exanths by Enterovirus	51	55	40	26	0.12
Influenza	6	5	5	4	0.01
Acute hemorrhagic conjunctivitis		3	1	1	0.03
Epidemic keratoconjunctivitis	23	27	22	12	0.33
Bacterial meningitis	2	3	3		
Aseptic meningitis	4	3	4	6	0.25
Mycoplasma pneumonia	22	6	17	9	0.38
Chlamydial pneumonia (excluding psittacosis)			1	1	0.04
Influenza-Associated Hospitalizations		2			

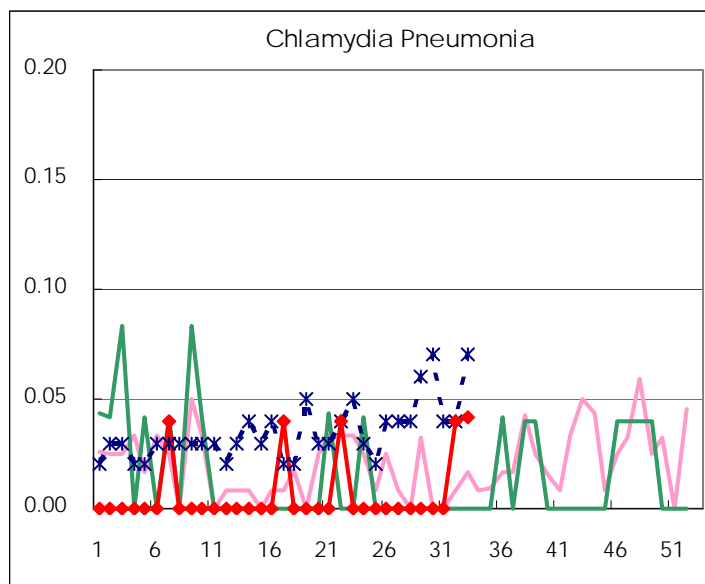
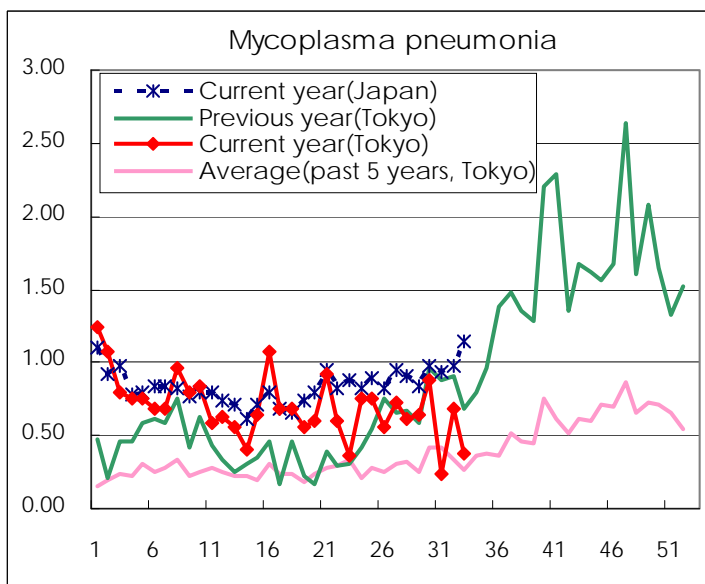
(Blank means 0.)

Disease Trend Graph (weekly reported cases per sentinel in comparison)









Number of sentinel facilities for weekly reporting		
Types of sentinels	Number of sentinels	Sentinels having reported
Pediatric	264	218
Influenza	419	361
Ophthalmic	39	36
Specially-designated	25	24

Tokyo Metropolitan Government
Infectious Disease Surveillance Center