

---

INFECTIOUS DISEASES WEEKLY REPORT

# TOKYO IDWR

Tokyo Metropolitan Infectious Disease Surveillance Center

---

## 6 September 2012 / Number 35

### Surveillance System in Tokyo, Japan

**The infectious diseases which all physicians must report**

All physicians must report to health centers the incidence of the diseases which are shown at page one. Health centers electronically report the individual cases to Tokyo Metropolitan Infectious Disease Surveillance Center.

**The infectious diseases required to be reported by the sentinels**

The numbers of patients who visit the sentinel clinics or hospitals during a week are reported to health centers in Tokyo. And they electronically report the numbers to Tokyo Metropolitan Infectious Disease Surveillance Center. We have about 500 sentinel clinics and hospitals in Tokyo.

1st Week is early January and 52nd Week is end of December.

Tokyo Metropolitan Institute of Public Health

TEL:81-3-3363-3213 FAX:81-3-5332-7365

e-mail:[idsc@tokyo-eiken.go.jp](mailto:idsc@tokyo-eiken.go.jp)

URL:[idsc.tokyo-eiken.go.jp/](http://idsc.tokyo-eiken.go.jp/)

---

## Number of patients with the diseases which all physicians must report

Category	Diseases	Tokyo				Japan		
		32nd	33rd	34th	35th	Cum 2012	35th	Cum 2012
I	Ebola hemorrhagic fever							
	Crimean-Congo hemorrhagic fever							
	Smallpox							
	South American hemorrhagic fever							
	Plague							
	Marburg disease							
	Lassa fever							
II	Acute poliomyelitis							
	Tuberculosis	94	94	74	62	3,069	358	19,511
	Diphtheria							
	Severe Acute Respiratory Syndrome(SARS)							
	Avian influenza H5N1							
III	Cholera							3
	Shigellosis	4	2	3	1	49	8	143
	Enterohemorrhagic Escherichia coli infection	9	14	10	10	145	162	2,412
	Typhoid fever			1		6	1	19
	Paratyphoid fever				1	6	1	12
IV	Hepatitis E					11	1	85
	West Nile fever							
	Hepatitis A		1	1		27		122
	Echinococcosis							6
	Yellow fever							
	Psittacosis							5
	Omsk hemorrhagic fever							
	Relapsing fever							
	Kyasanur forest disease							
	Q fever							
	Rabies							
	Coccidioidomycosis							1
	Monkeypox							
	Hemorrhagic fever with renal syndrome							
	Western equine encephalitis							
	Tick-borne encephalitis							
	Anthrax							
	Chikungunya fever							4
	Scrub typhus(Tsutsugamushi disease)					3	1	195
	Dengue fever		3	2	2	28	8	115
	Eastern equine encephalitis							
	Avian influenza (excluding H5N1)							
	Nipah virus infection							
	Japanese spotted fever						5	73
	Japanese encephalitis							
	Hantavirus pulmonary syndrome							
	Herpes B virus infection							
	Glanders							
	Brucellosis							
	Venezuelan equine encephalitis							
	Hendra virus infection							
	Epidemic typhus							
Botulism							3	
Malaria	1		2	1	15	6	52	
Tularemia								
Lyme disease						1	8	
Lyssavirus infection(excluding rabies)								
Rift valley fever								
Melioidosis								
Legionellosis		2	1	1	39	12	552	
Leptospirosis					3		9	
Rocky mountain spotted fever								

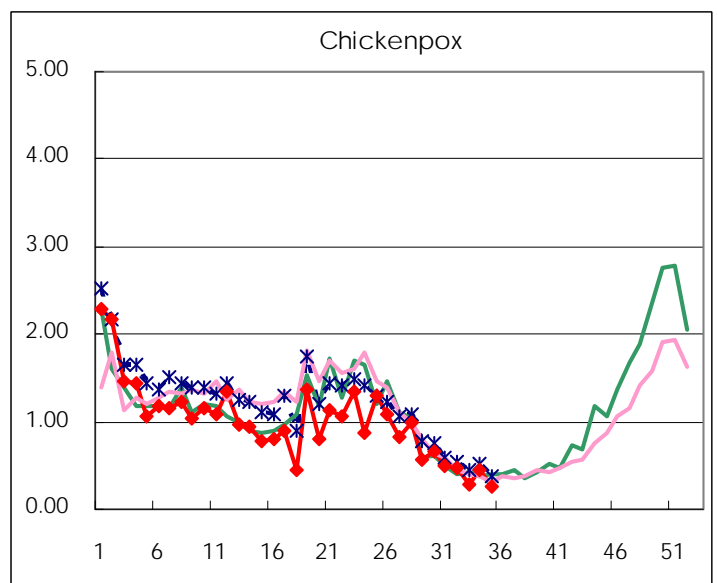
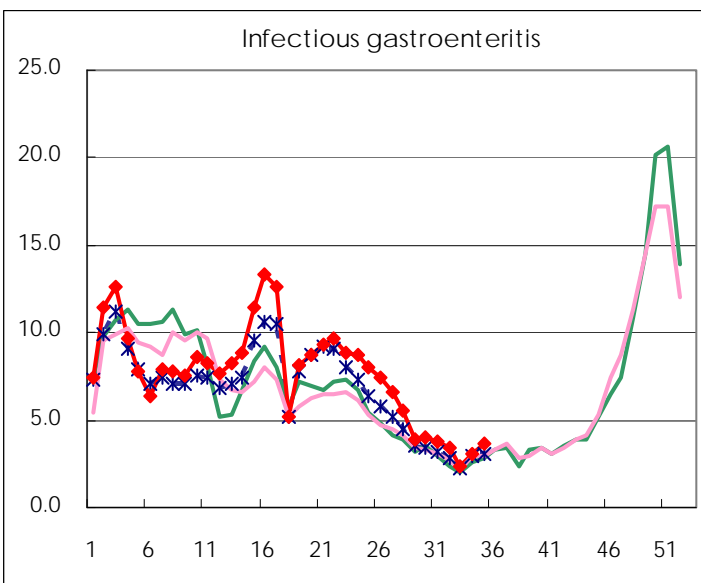
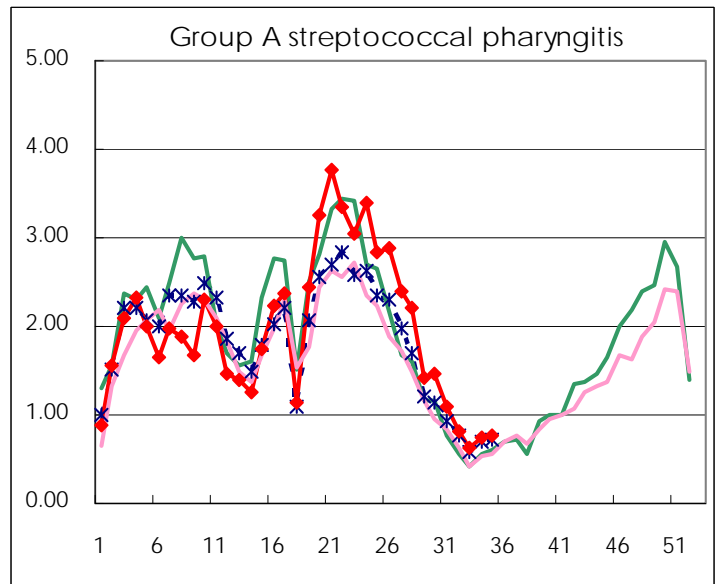
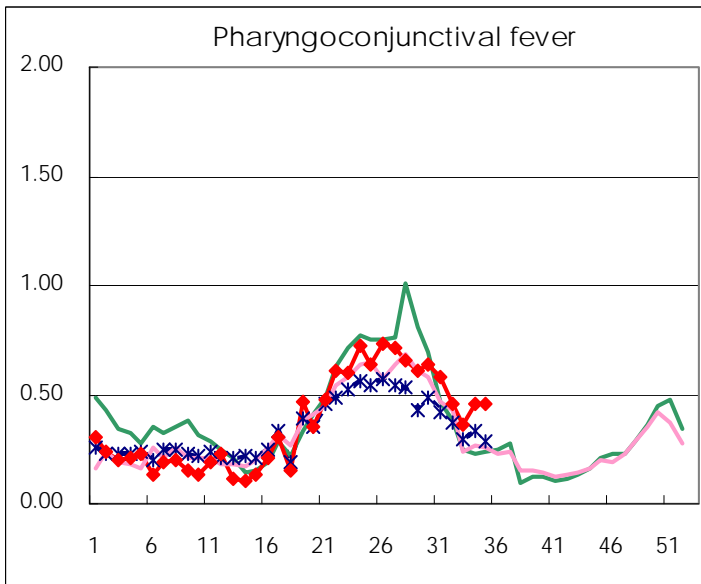
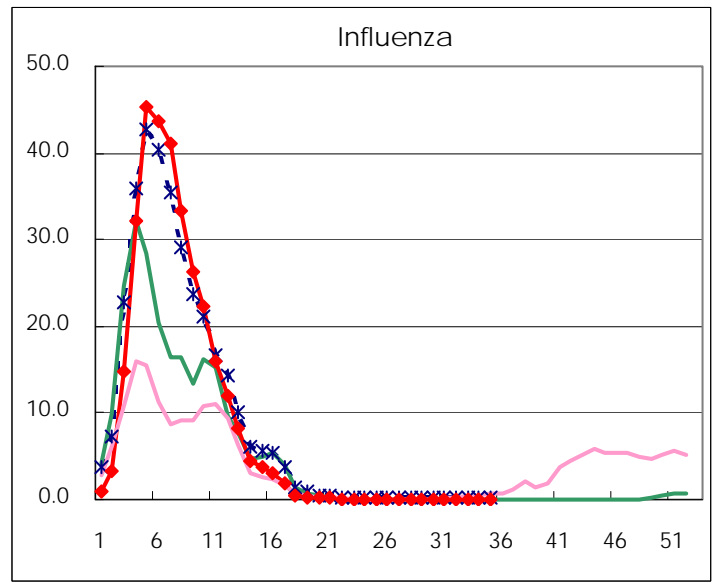
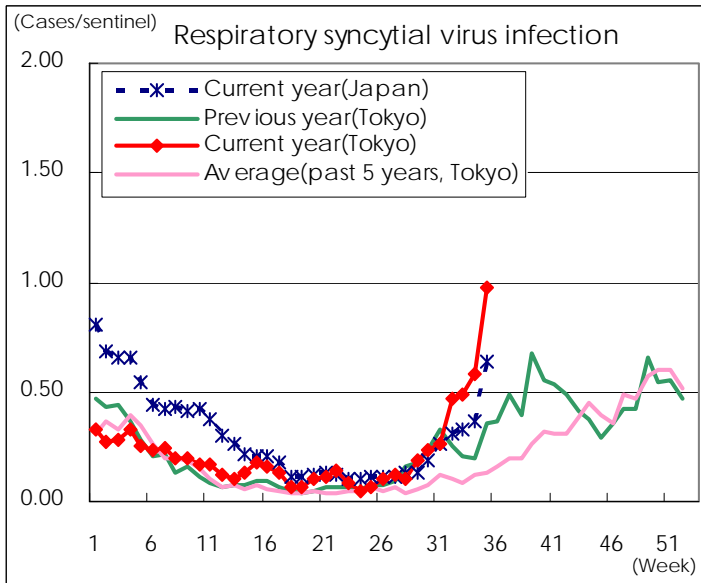
Category	Diseases	Tokyo				Japan		
		32nd	33rd	34th	35th	Cum 2012	35th	Cum 2012
V	Amebiasis	7	3	3	6	119	7	579
	Viral hepatitis(excluding hepatitis A and E)			1	2	32	3	142
	Acute encephalitis(excluding JE and WNE)			1	3	24	2	266
	Cryptosporidiosis					2		6
	Creutzfeldt-Jakob disease	1				9		118
	Severe invasive streptococcal infections(TSLS)	2			2	16	1	172
	Acquired immunodeficiency syndrome (AIDS)	12	6	9	4	303	18	924
	Giardiasis			1		9	1	45
	Meningococcal meningitis						1	9
	Congenital rubella syndrome							1
	Syphilis	8	3	5	14	190	16	573
	Tetanus					3	1	72
	Vancomycin-resistant S. aureus infection							
	Vancomycin-resistant Enterococcus infection					7	1	61
	Rubella	24	28	19	16	324	65	1419
Measles	2	3	2	1	60	4	234	

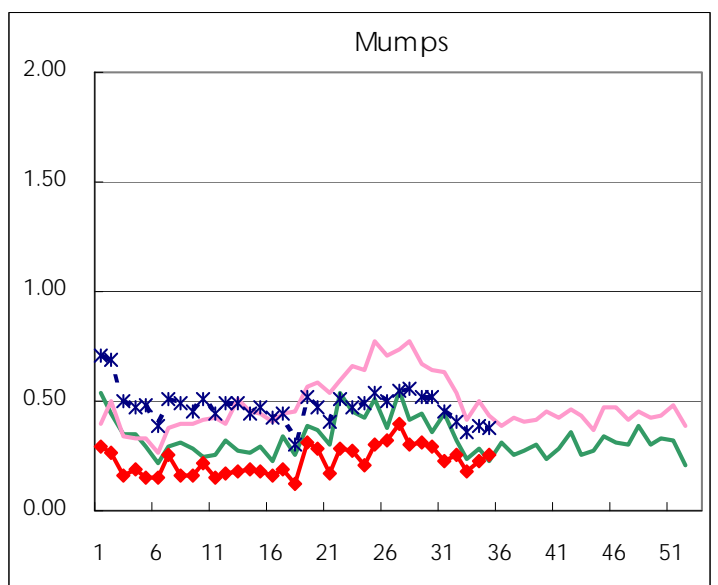
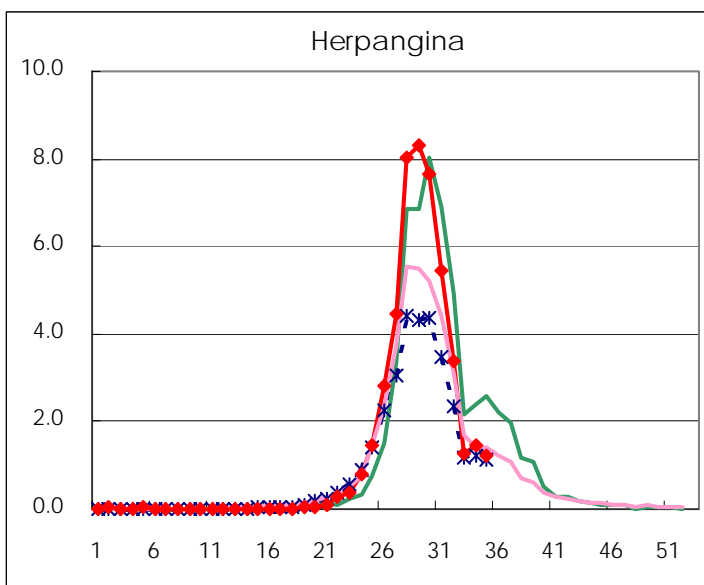
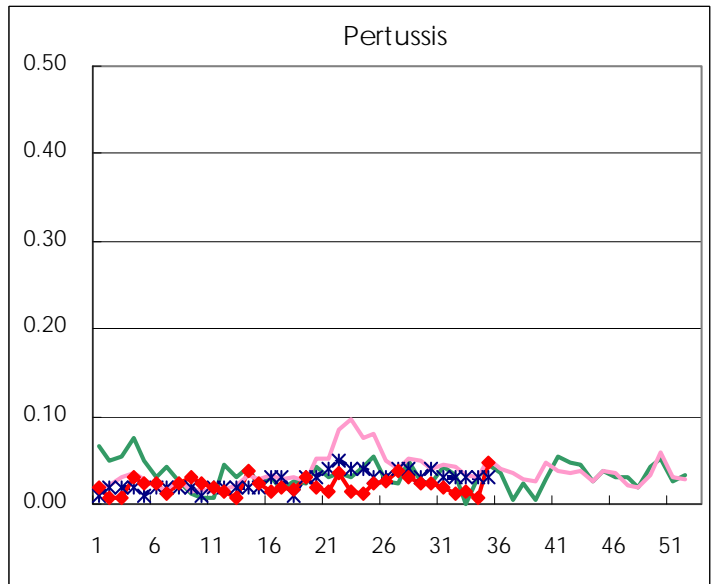
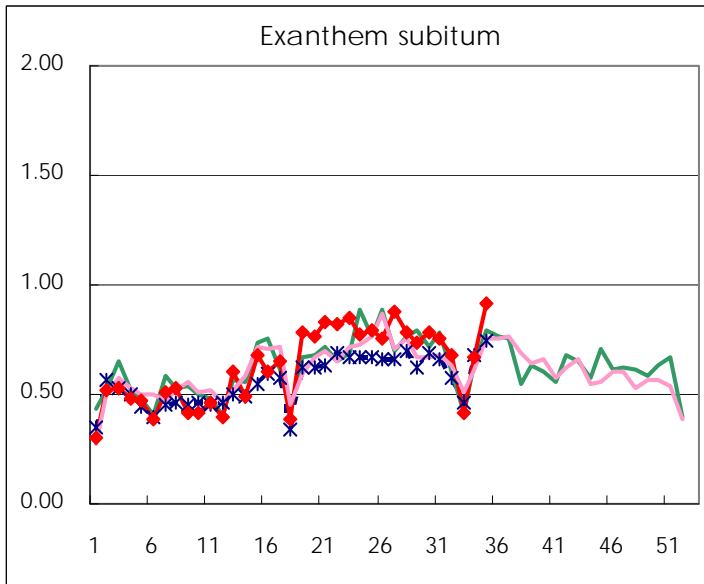
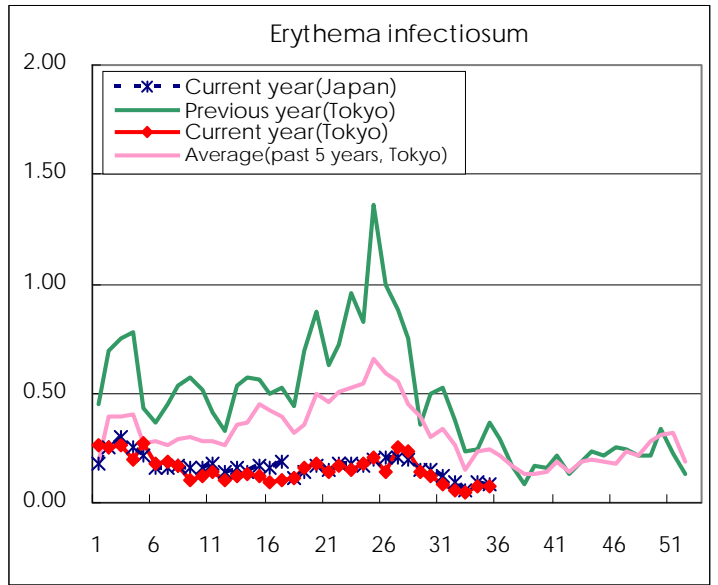
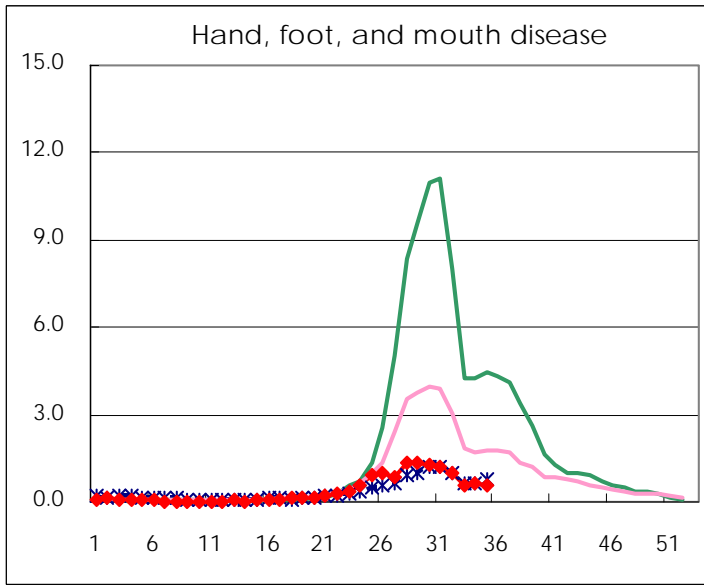
Number of patients with the diseases to be reported  
by the designated clinics and hospitals

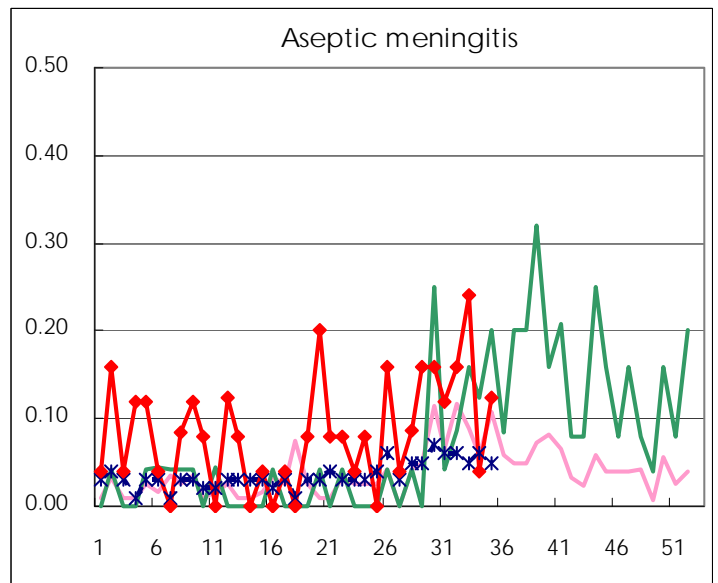
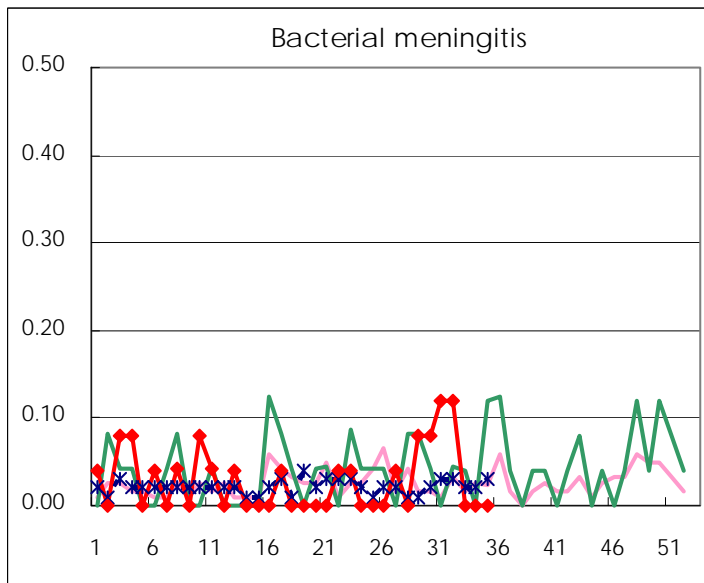
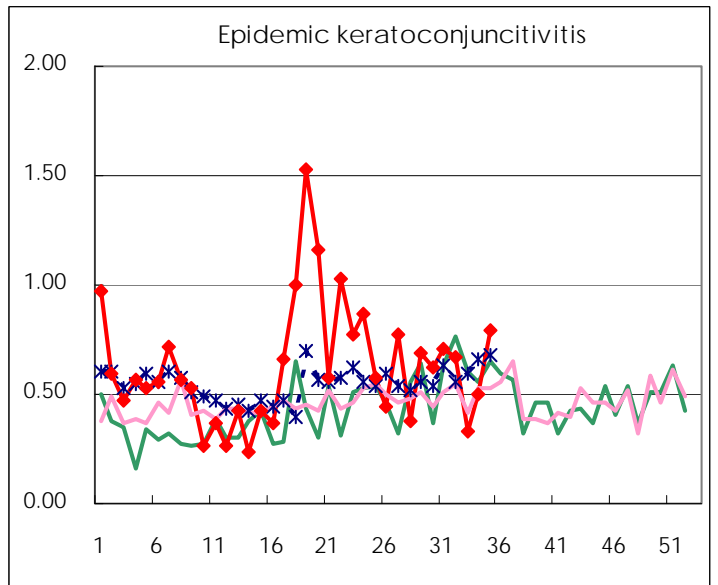
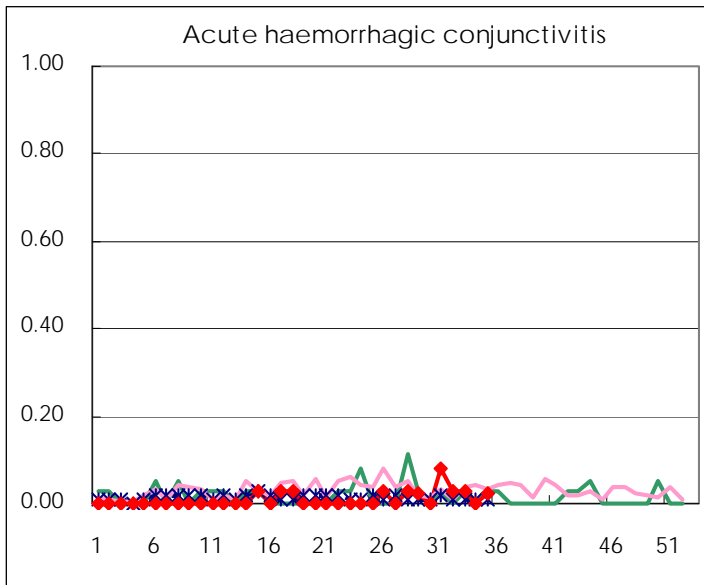
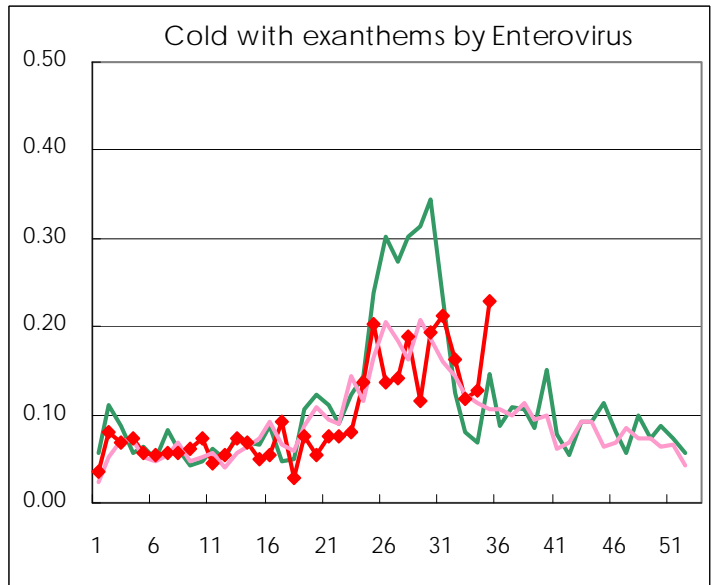
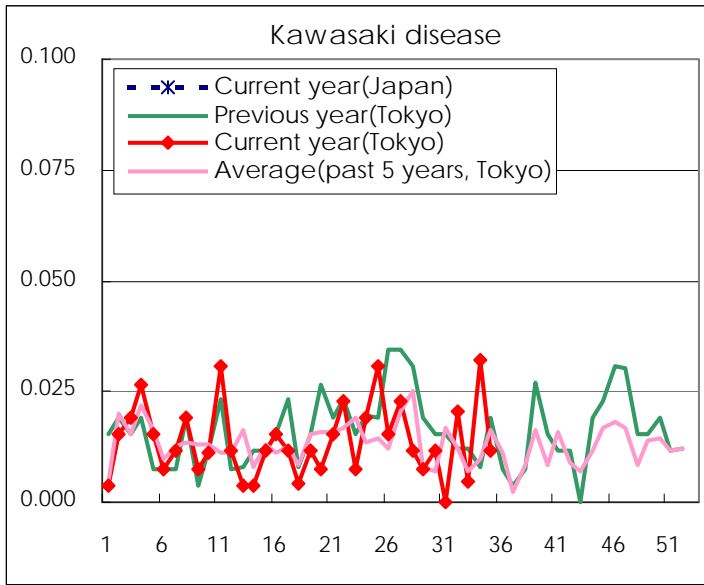
Diseases	Tokyo				
	32nd	33rd	34th	35th	/sentinel
Respiratory syncytial virus infection	117	106	146	251	0.97
Pharyngoconjunctival fever	112	80	114	118	0.46
Group A streptococcal pharyngitis	203	140	185	201	0.78
Infectious gastroenteritis	836	523	764	936	3.63
Chickenpox	114	63	112	67	0.26
Hand, foot, and mouth disease	246	121	161	154	0.60
Erythema infectiosum	13	10	19	19	0.07
Exanthem subitum	168	91	167	236	0.91
Pertussis	3	3	2	12	0.05
Herpangina	831	278	363	317	1.23
Mumps	63	39	56	66	0.26
Kawasaki disease	5	1	8	3	0.01
Cold with exanths by Enterovirus	40	26	32	59	0.23
Influenza	5	4	11	9	0.02
Acute hemorrhagic conjunctivitis	1	1		1	0.03
Epidemic keratoconjunctivitis	22	12	19	31	0.79
Bacterial meningitis	3				
Aseptic meningitis	4	6	1	3	0.13
Mycoplasma pneumonia	17	11	13	13	0.54
Chlamydial pneumonia (excluding psittacosis)	1	1	1		
Influenza-Associated Hospitalizations					

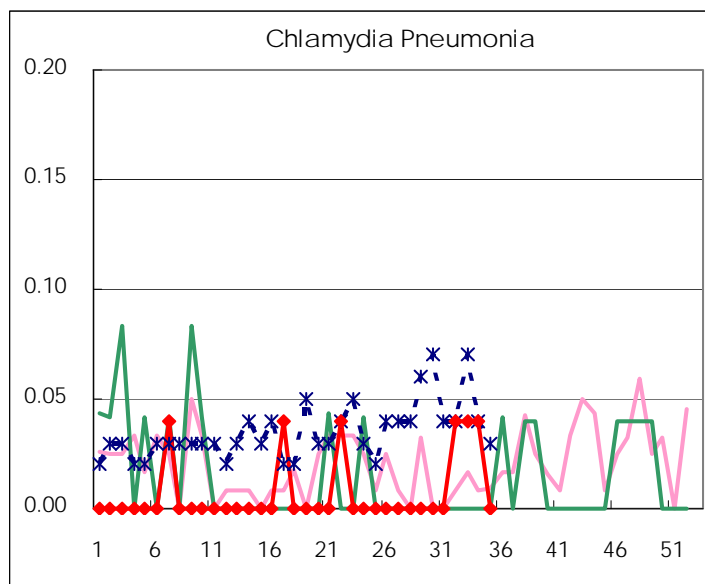
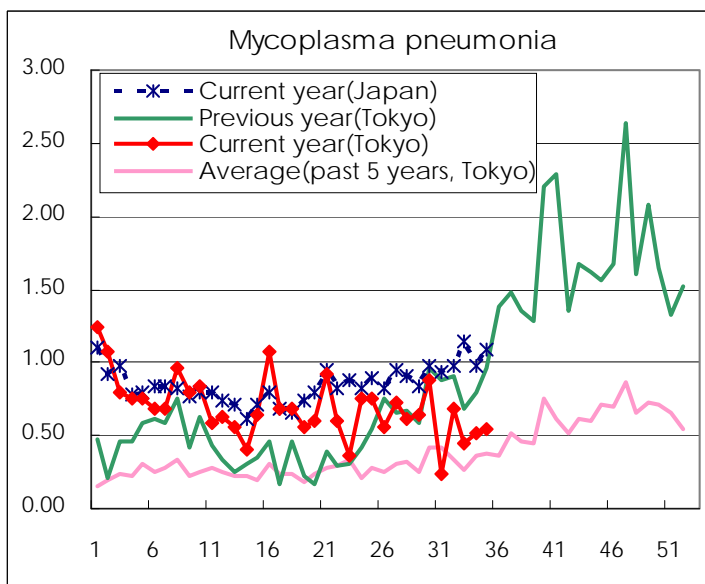
( Blank means 0. )

# Disease Trend Graph (weekly reported cases per sentinel in comparison)









Number of sentinel facilities for weekly reporting		
Types of sentinels	Number of sentinels	Sentinels having reported
Pediatric	264	258
Influenza	419	400
Ophthalmic	39	39
Specially-designated	25	24

Tokyo Metropolitan Government  
**Infectious Disease Surveillance Center**