
INFECTIOUS DISEASES WEEKLY REPORT

TOKYO IDWR

Tokyo Metropolitan Infectious Disease Surveillance Center

20 September 2012 / Number 37

Surveillance System in Tokyo, Japan

The infectious diseases which all physicians must report

All physicians must report to health centers the incidence of the diseases which are shown at page one. Health centers electronically report the individual cases to Tokyo Metropolitan Infectious Disease Surveillance Center.

The infectious diseases required to be reported by the sentinels

The numbers of patients who visit the sentinel clinics or hospitals during a week are reported to health centers in Tokyo. And they electronically report the numbers to Tokyo Metropolitan Infectious Disease Surveillance Center. We have about 500 sentinel clinics and hospitals in Tokyo.

1st Week is early January and 52nd Week is end of December.

Tokyo Metropolitan Institute of Public Health

TEL:81-3-3363-3213 FAX:81-3-5332-7365

e-mail:idsc@tokyo-eiken.go.jp

URL:idsc.tokyo-eiken.go.jp/

Number of patients with the diseases which all physicians must report

Category	Diseases	Tokyo				Japan		
		34th	35th	36th	37th	Cum 2012	37th	Cum 2012
I	Ebola hemorrhagic fever							
	Crimean-Congo hemorrhagic fever							
	Smallpox							
	South American hemorrhagic fever							
	Plague							
	Marburg disease							
	Lassa fever							
II	Acute poliomyelitis							
	Tuberculosis	82	75	83	75	3,249	361	20,609
	Diphtheria							
	Severe Acute Respiratory Syndrome(SARS)							
	Avian influenza H5N1							
III	Cholera							3
	Shigellosis	3	1	1	1	51	7	153
	Enterohemorrhagic Escherichia coli infection	10	10	12	11	168	122	2,708
	Typhoid fever	1		1	1	8	1	23
	Paratyphoid fever		1	1		7	1	15
IV	Hepatitis E					11	1	89
	West Nile fever							
	Hepatitis A	1				27		124
	Echinococcosis							9
	Yellow fever							
	Psittacosis							5
	Omsk hemorrhagic fever							
	Relapsing fever							
	Kyasanur forest disease							
	Q fever							
	Rabies							
	Coccidioidomycosis				1	1		2
	Monkeypox							
	Hemorrhagic fever with renal syndrome							
	Western equine encephalitis							
	Tick-borne encephalitis							
	Anthrax							
	Chikungunya fever							4
	Scrub typhus(Tsutsugamushi disease)					3		196
	Dengue fever	2	2	4	4	36	7	138
	Eastern equine encephalitis							
	Avian influenza (excluding H5N1)							
	Nipah virus infection							
	Japanese spotted fever						4	92
	Japanese encephalitis							
	Hantavirus pulmonary syndrome							
	Herpes B virus infection							
	Glanders							
	Brucellosis							
	Venezuelan equine encephalitis							
	Hendra virus infection							
Epidemic typhus								
Botulism							3	
Malaria	2		2	1	17	1	56	
Tularemia								
Lyme disease							9	
Lyssavirus infection(excluding rabies)								
Rift valley fever								
Melioidosis								
Legionellosis	1	1	2		41	19	585	
Leptospirosis			1		4	1	13	
Rocky mountain spotted fever								

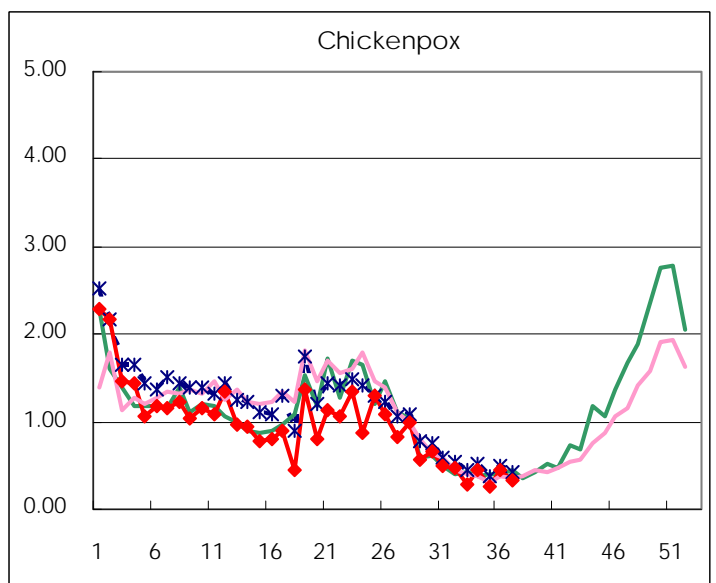
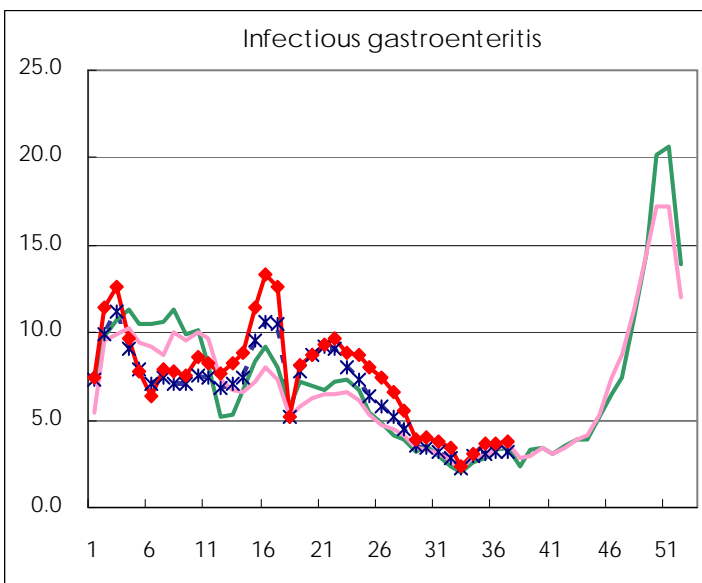
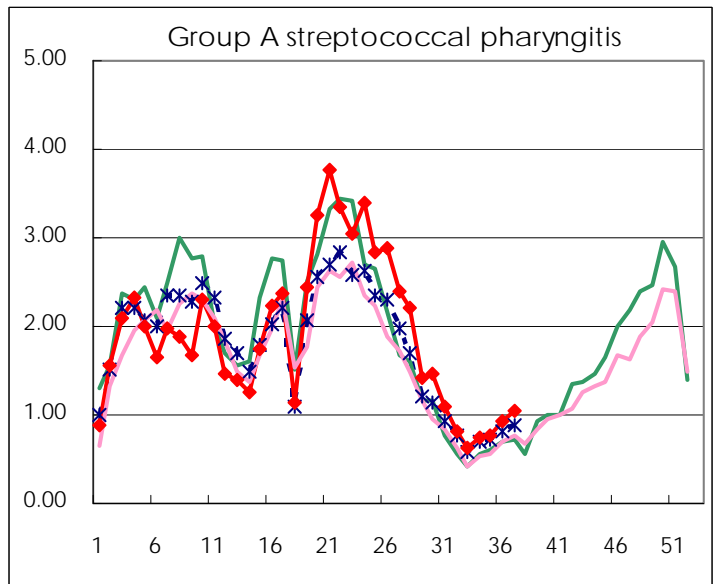
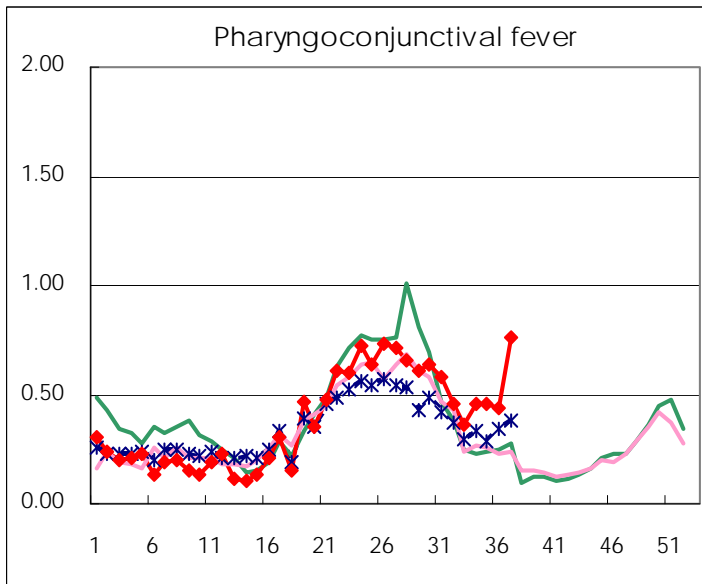
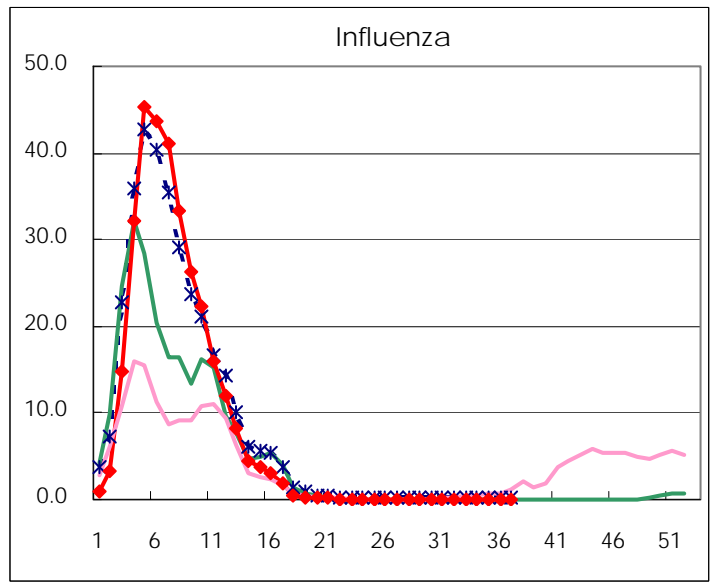
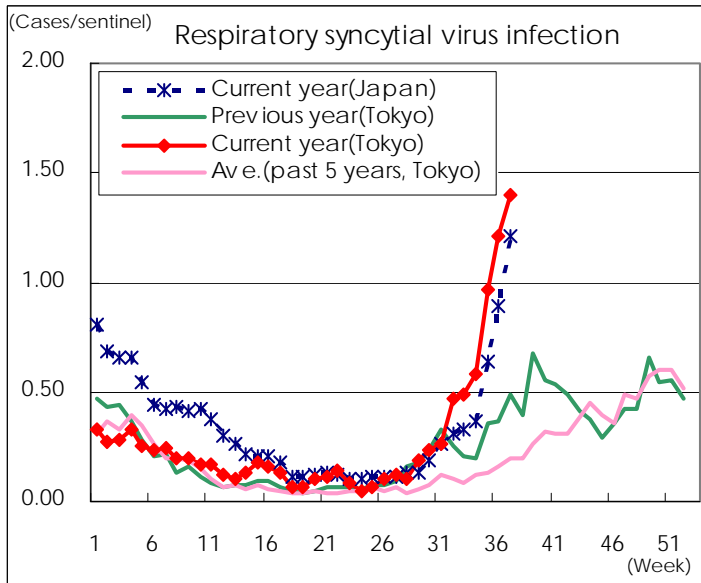
Category	Diseases	Tokyo					Japan	
		34th	35th	36th	37th	Cum 2012	37th	Cum 2012
V	Amebiasis	3	6	7	10	136	15	626
	Viral hepatitis(excluding hepatitis A and E)	1	2	1	2	35		150
	Acute encephalitis(excluding JE and WNE)	1	3		1	25	1	275
	Cryptosporidiosis					2		6
	Creutzfeldt-Jakob disease			2		11	3	128
	Severe invasive streptococcal infections(TSLS)		2			16	2	178
	Acquired immunodeficiency syndrome (AIDS)	9	5	11	11	326	17	981
	Giardiasis	1		1		10	2	49
	Meningococcal meningitis							9
	Congenital rubella syndrome							
	Syphilis	6	14	8	2	201	6	603
	Tetanus					3	3	81
	Vancomycin-resistant S. aureus infection							
	Vancomycin-resistant Enterococcus infection				1	8		65
	Rubella	19	18	22	33	382	54	1598
	Measles	2	3	4	1	67	7	261

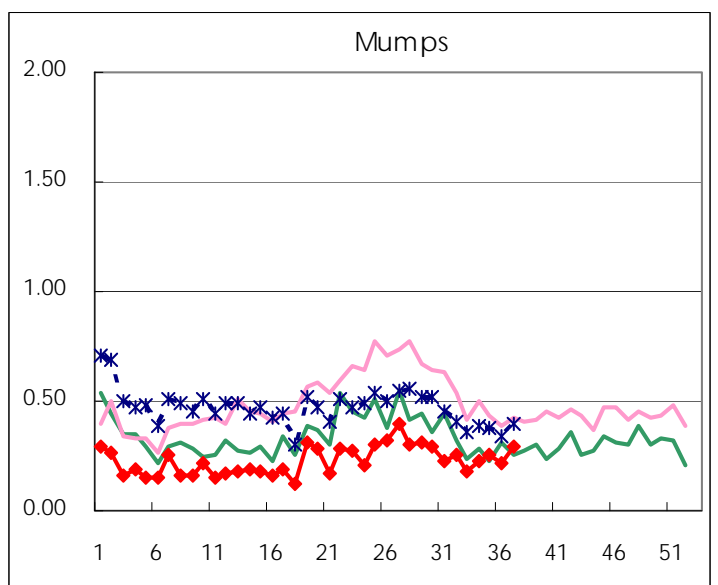
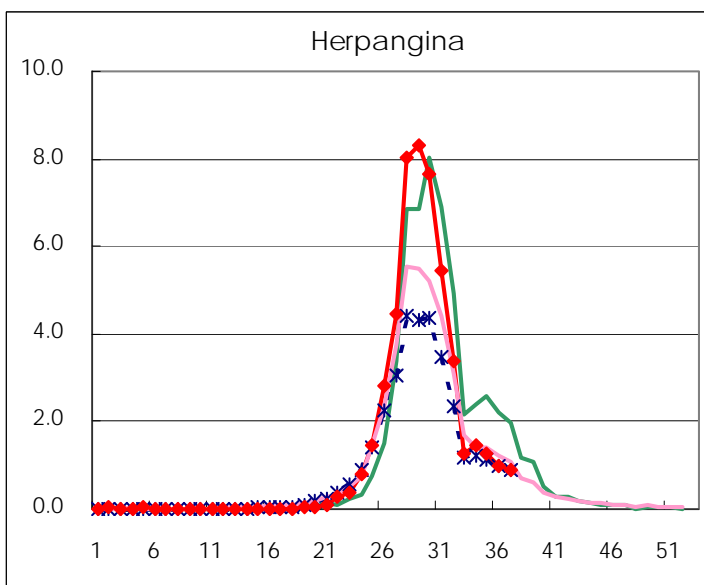
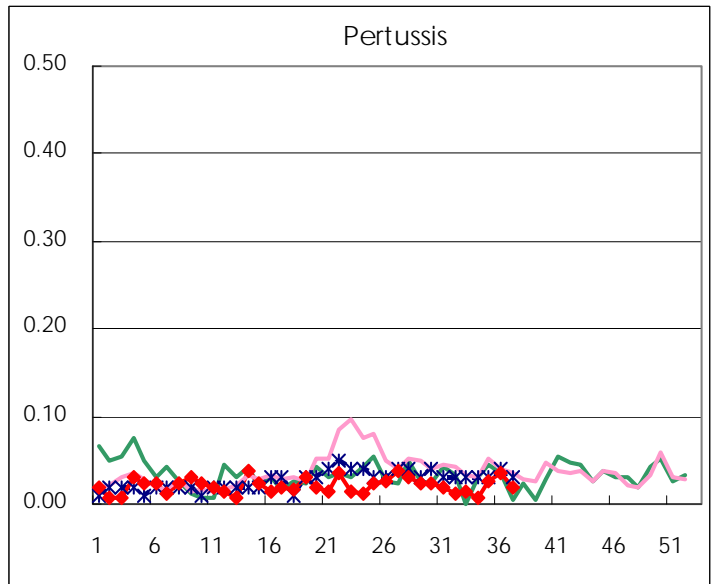
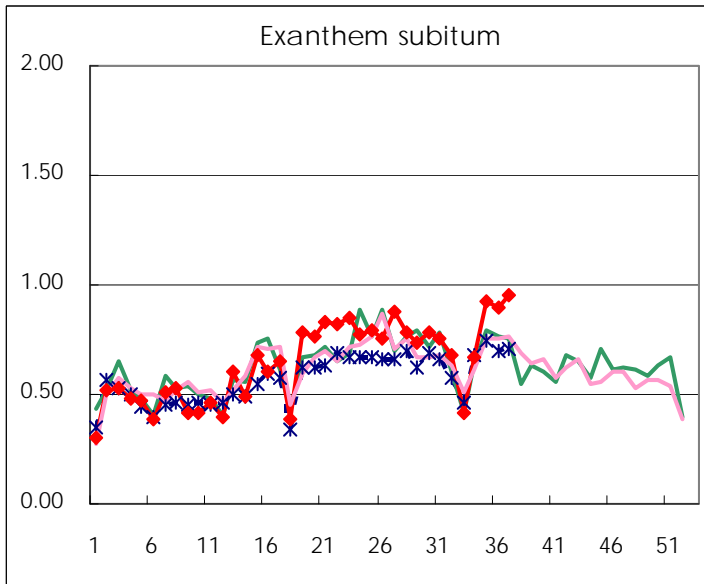
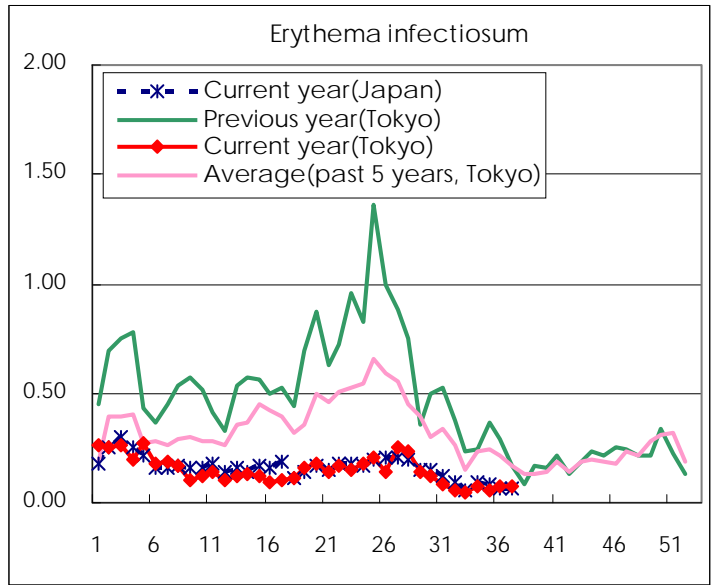
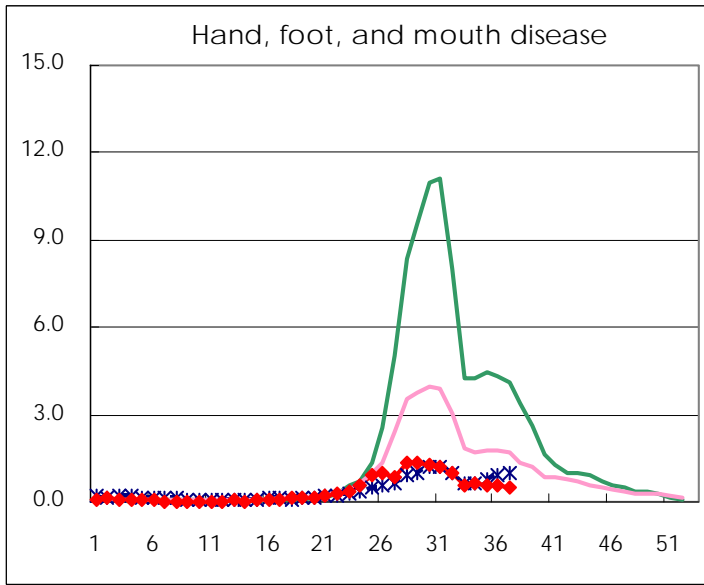
Number of patients with the diseases to be reported
by the designated clinics and hospitals

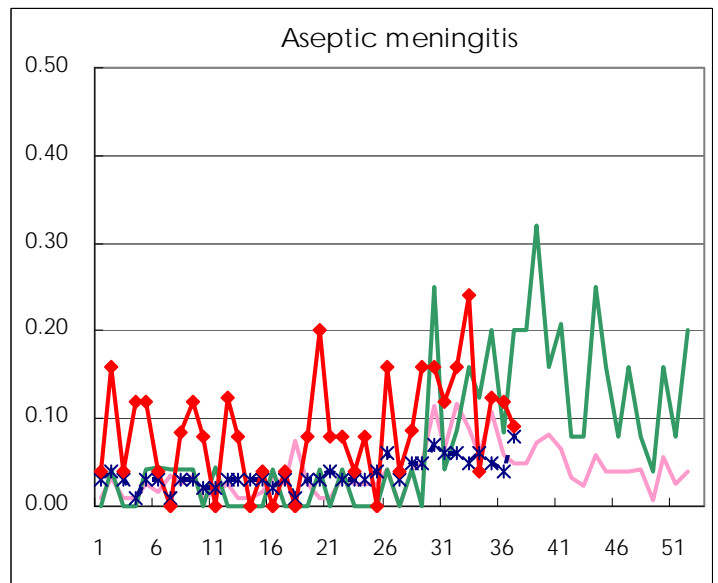
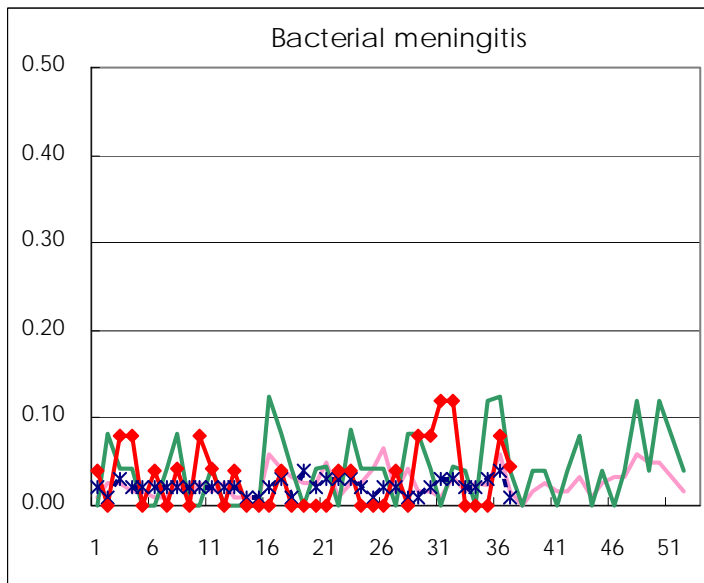
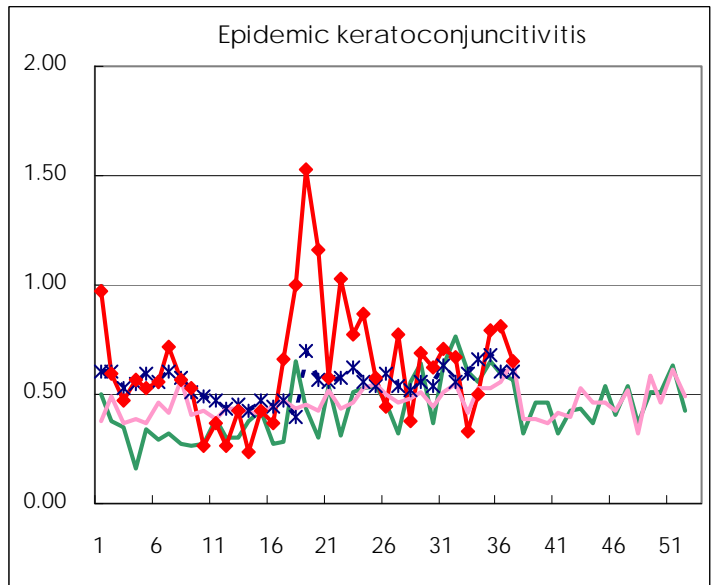
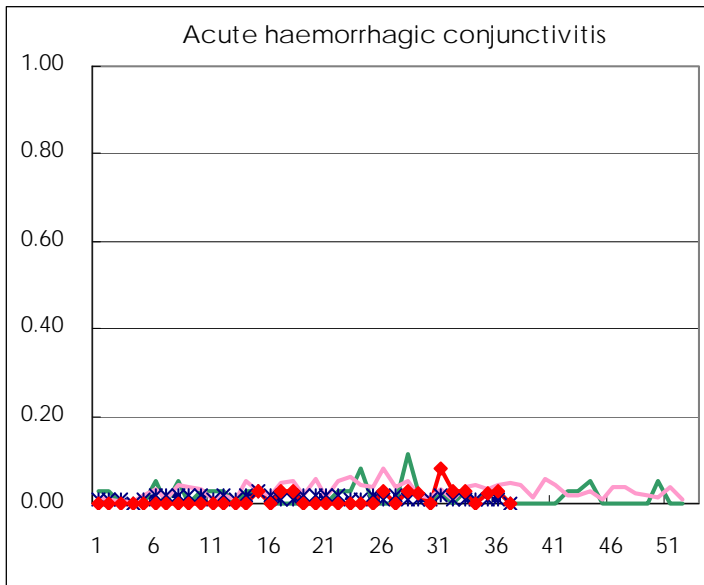
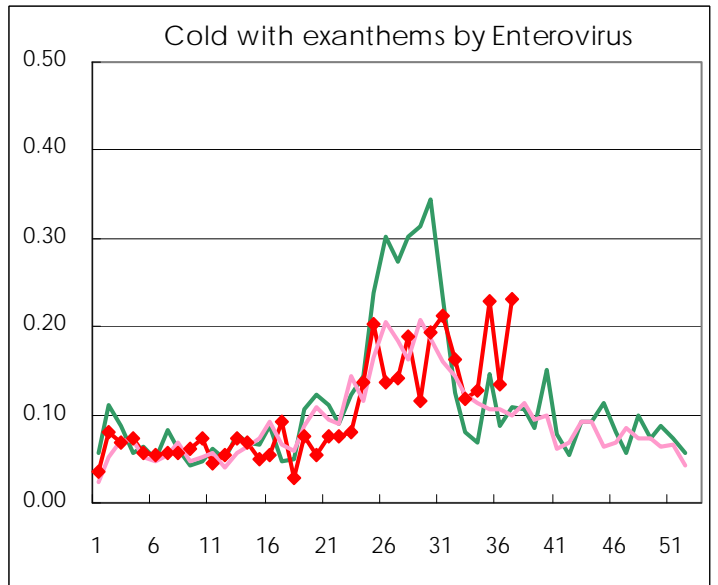
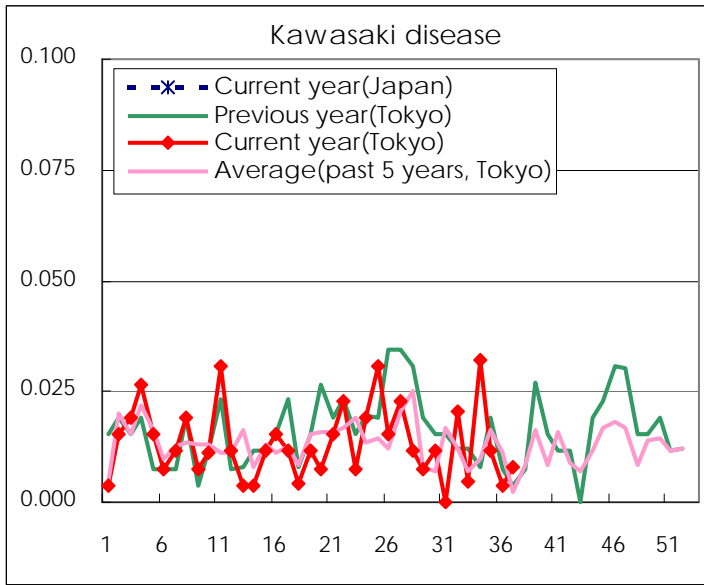
Diseases	Tokyo				
	34th	35th	36th	37th	/sentinel
Respiratory syncytial virus infection	146	251	317	358	1.40
Pharyngoconjunctival fever	114	118	115	194	0.76
Group A streptococcal pharyngitis	185	201	242	270	1.05
Infectious gastroenteritis	764	941	940	961	3.75
Chickenpox	112	67	114	82	0.32
Hand, foot, and mouth disease	161	154	154	132	0.52
Erythema infectiosum	19	15	20	20	0.08
Exanthem subitum	167	239	233	243	0.95
Pertussis	2	7	9	5	0.02
Herpangina	363	324	262	227	0.89
Mumps	56	66	57	75	0.29
Kawasaki disease	8	3	1	2	0.01
Cold with exanths by Enterovirus	32	59	35	59	0.23
Influenza	11	9	43	43	0.11
Acute hemorrhagic conjunctivitis		1	1		
Epidemic keratoconjunctivitis	19	31	31	24	0.65
Bacterial meningitis			2	1	0.05
Aseptic meningitis	1	3	3	2	0.09
Mycoplasma pneumonia	13	13	21	25	1.14
Chlamydial pneumonia (excluding psittacosis)	1				
Influenza-Associated Hospitalizations					

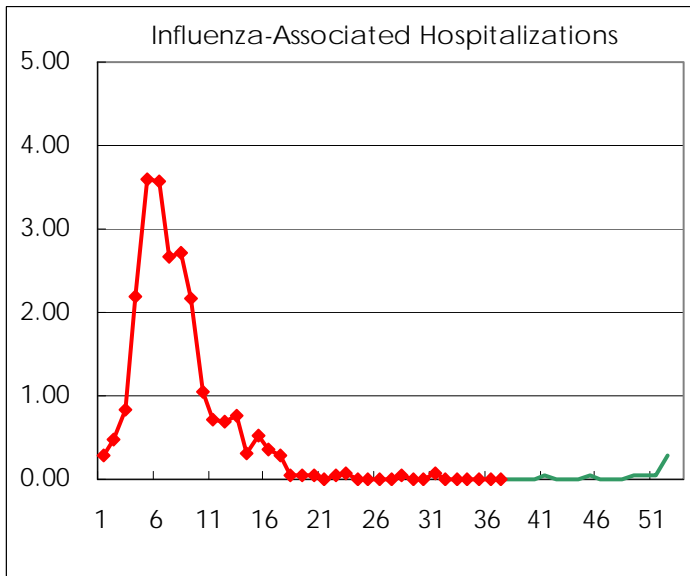
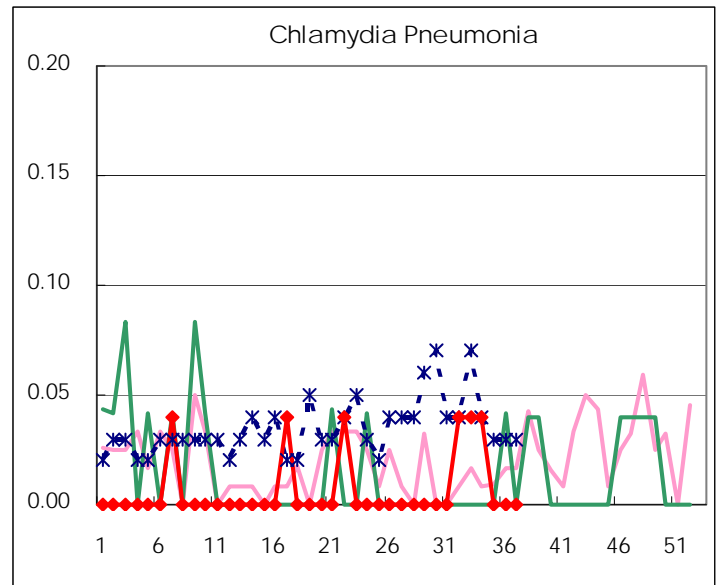
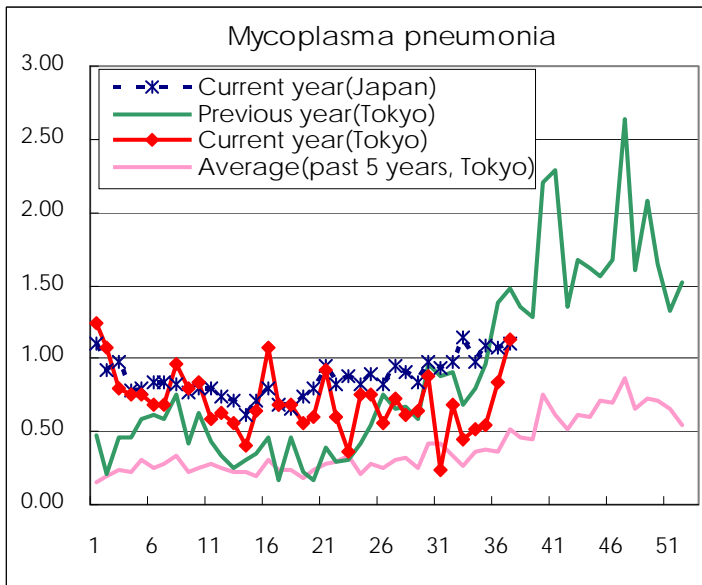
(Blank means 0.)

Disease Trend Graph (weekly reported cases per sentinel in comparison)









Number of sentinel facilities for weekly reporting		
Types of sentinels	Number of sentinels	Sentinels having reported
Pediatric	264	256
Influenza	419	404
Ophthalmic	39	37
Specially-designated	25	22

Tokyo Metropolitan Government
Infectious Disease Surveillance Center