
INFECTIOUS DISEASES WEEKLY REPORT

TOKYO IDWR

Tokyo Metropolitan Infectious Disease Surveillance Center

27 September 2012 / Number 38

Surveillance System in Tokyo, Japan

The infectious diseases which all physicians must report

All physicians must report to health centers the incidence of the diseases which are shown at page one. Health centers electronically report the individual cases to Tokyo Metropolitan Infectious Disease Surveillance Center.

The infectious diseases required to be reported by the sentinels

The numbers of patients who visit the sentinel clinics or hospitals during a week are reported to health centers in Tokyo. And they electronically report the numbers to Tokyo Metropolitan Infectious Disease Surveillance Center. We have about 500 sentinel clinics and hospitals in Tokyo.

1st Week is early January and 52nd Week is end of December.

Tokyo Metropolitan Institute of Public Health

TEL:81-3-3363-3213 FAX:81-3-5332-7365

e-mail:idsc@tokyo-eiken.go.jp

URL:idsc.tokyo-eiken.go.jp/

Number of patients with the diseases which all physicians must report

Category	Diseases	Tokyo				Japan		
		35th	36th	37th	38th	Cum 2012	38th	Cum 2012
I	Ebola hemorrhagic fever							
	Crimean-Congo hemorrhagic fever							
	Smallpox							
	South American hemorrhagic fever							
	Plague							
	Marburg disease							
	Lassa fever							
II	Acute poliomyelitis							
	Tuberculosis	75	89	100	48	3,327	285	21,185
	Diphtheria							
	Severe Acute Respiratory Syndrome(SARS)							
	Avian influenza H5N1							
III	Cholera							3
	Shigellosis	1	1	1	1	52	6	162
	Enterohemorrhagic Escherichia coli infection	10	12	12	10	179	118	2,876
	Typhoid fever		1	1		8		23
	Paratyphoid fever	1	1			7		15
IV	Hepatitis E					11		91
	West Nile fever							
	Hepatitis A					27		124
	Echinococcosis							9
	Yellow fever							
	Psittacosis							6
	Omsk hemorrhagic fever							
	Relapsing fever							
	Kyasanur forest disease							
	Q fever							
	Rabies							
	Coccidioidomycosis			1		1		2
	Monkeypox							
	Hemorrhagic fever with renal syndrome							
	Western equine encephalitis							
	Tick-borne encephalitis							
	Anthrax							
	Chikungunya fever							4
	Scrub typhus(Tsutsugamushi disease)					3		196
	Dengue fever	2	4	4	1	37	5	146
	Eastern equine encephalitis							
	Avian influenza (excluding H5N1)							
	Nipah virus infection							
	Japanese spotted fever						5	98
	Japanese encephalitis							
	Hantavirus pulmonary syndrome							
	Herpes B virus infection							
	Glanders							
	Brucellosis							
	Venezuelan equine encephalitis							
	Hendra virus infection							
Epidemic typhus								
Botulism							3	
Malaria		2	1	1	18	2	58	
Tularemia								
Lyme disease							8	
Lyssavirus infection(excluding rabies)								
Rift valley fever								
Melioidosis								
Legionellosis	1	2		2	43	17	607	
Leptospirosis		1			4		13	
Rocky mountain spotted fever								

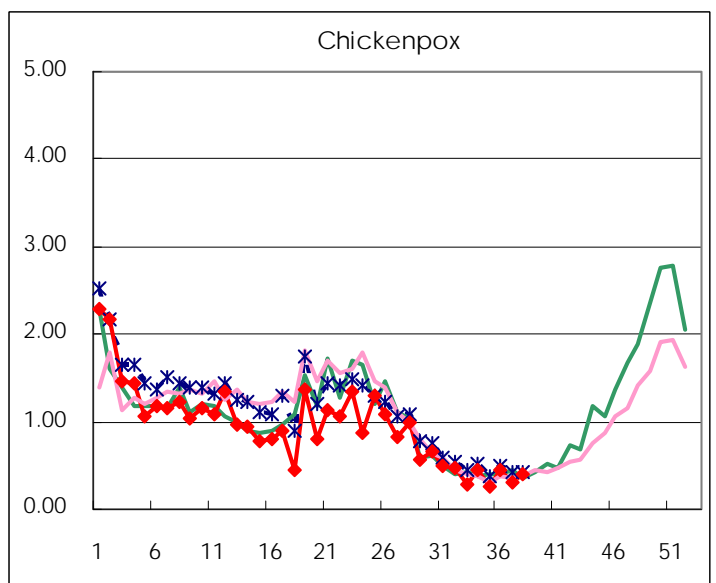
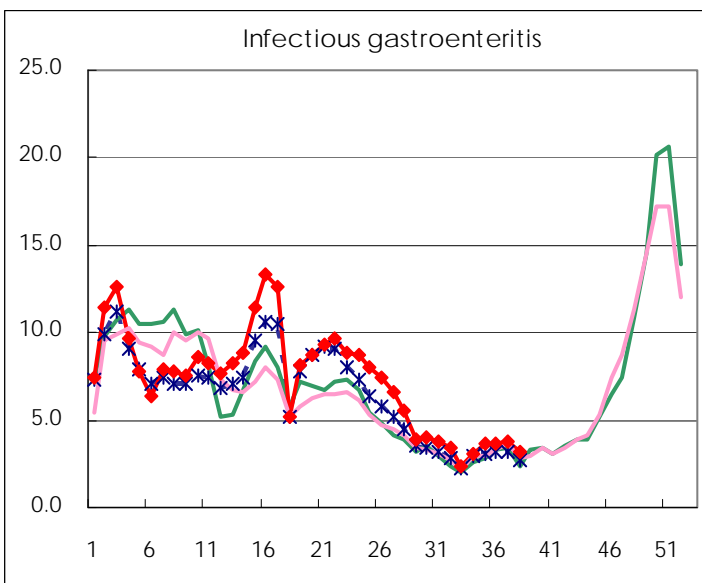
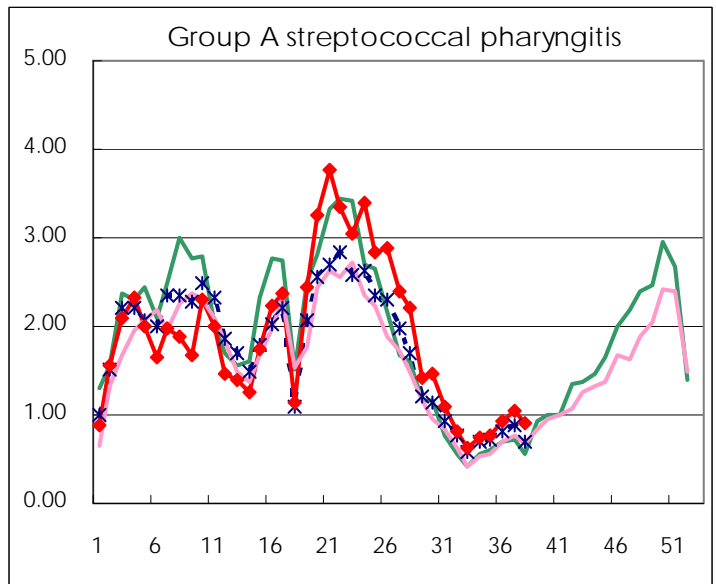
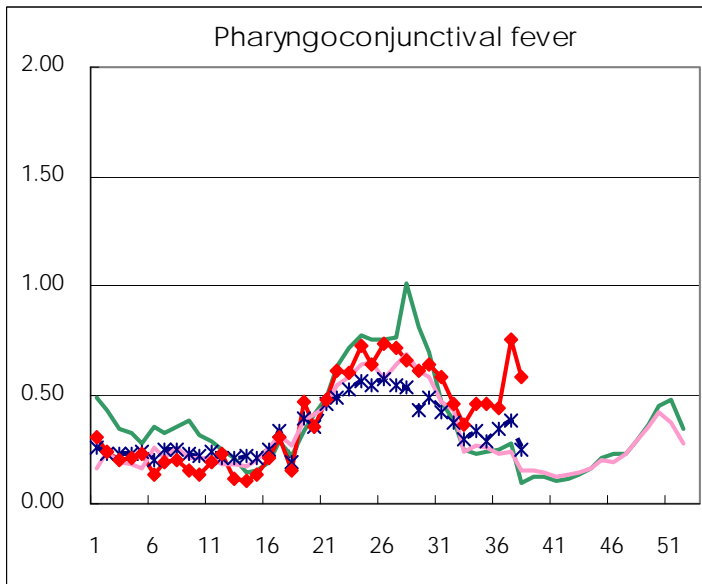
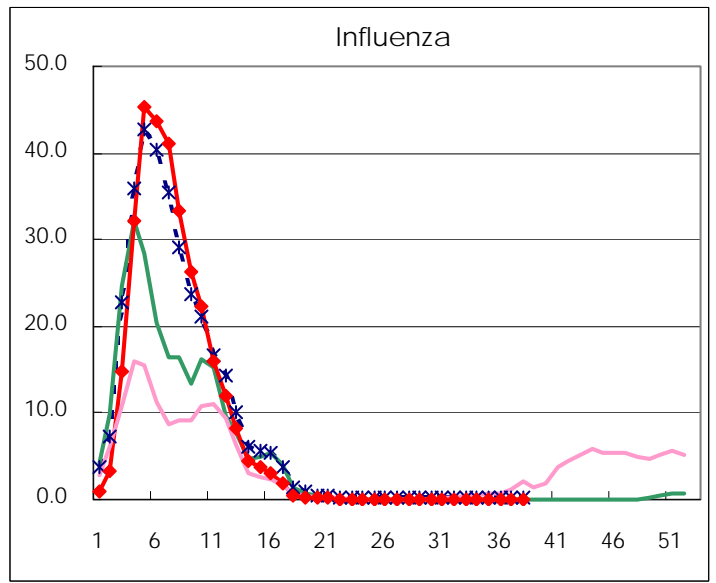
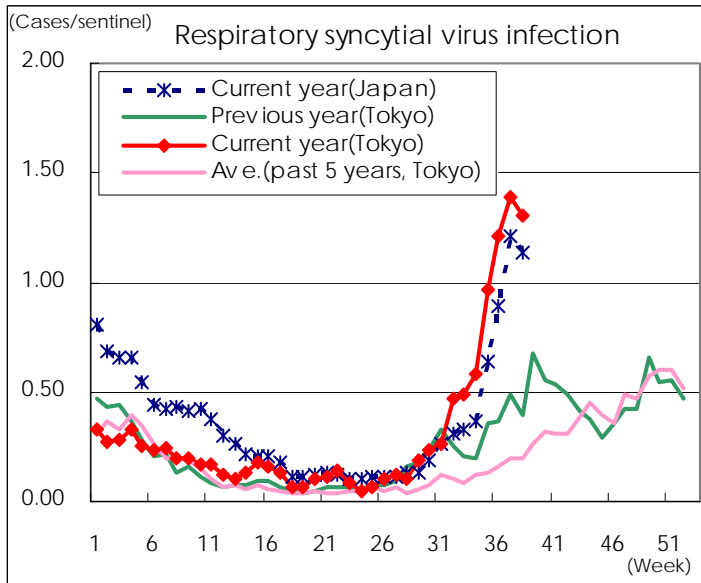
Category	Diseases	Tokyo				Japan		
		35th	36th	37th	38th	Cum 2012	38th	Cum 2012
V	Amebiasis	6	7	10	5	141	4	636
	Viral hepatitis(excluding hepatitis A and E)	2	1	2	2	37	4	158
	Acute encephalitis(excluding JE and WNE)	3		1	1	26	1	278
	Cryptosporidiosis					2		6
	Creutzfeldt-Jakob disease		2			11	3	132
	Severe invasive streptococcal infections(TSLS)	2			1	17	1	181
	Acquired immunodeficiency syndrome (AIDS)	5	11	11	4	330	11	1,001
	Giardiasis		1			10		49
	Meningococcal meningitis							9
	Congenital rubella syndrome							
	Syphilis	14	8	3	2	204	6	613
	Tetanus					3	1	84
	Vancomycin-resistant S. aureus infection							
	Vancomycin-resistant Enterococcus infection			1		8	2	68
	Rubella	18	22	33	17	399	50	1,669
	Measles	3	4	1	1	68	6	263

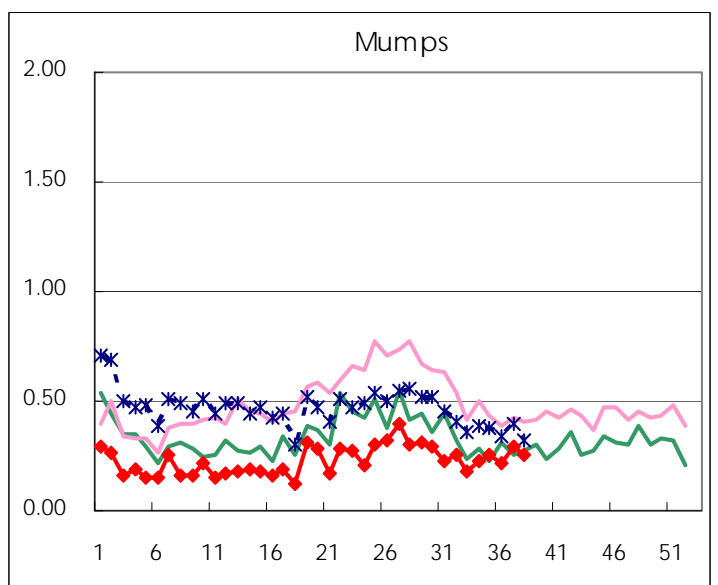
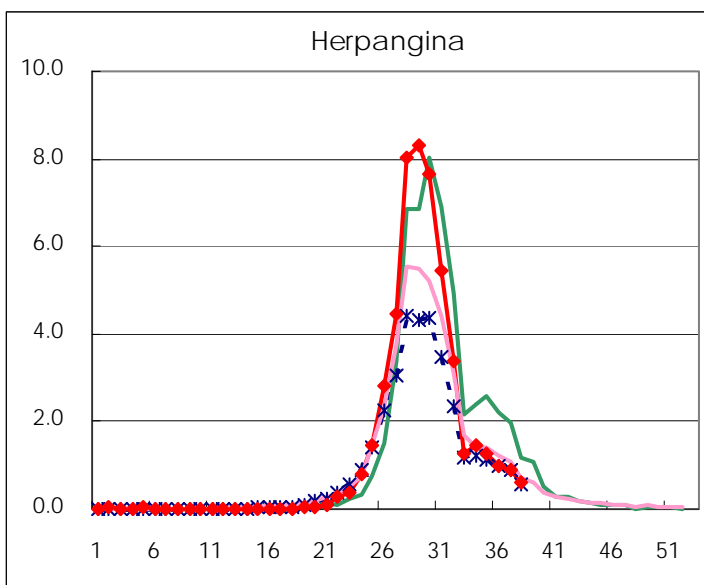
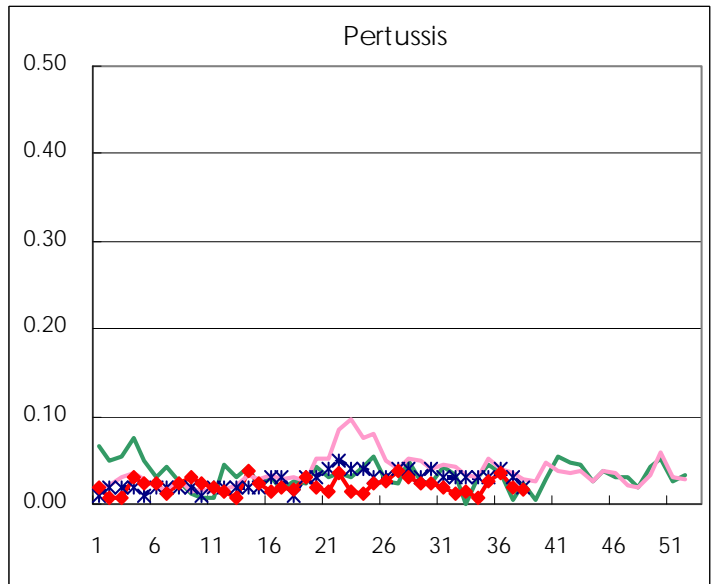
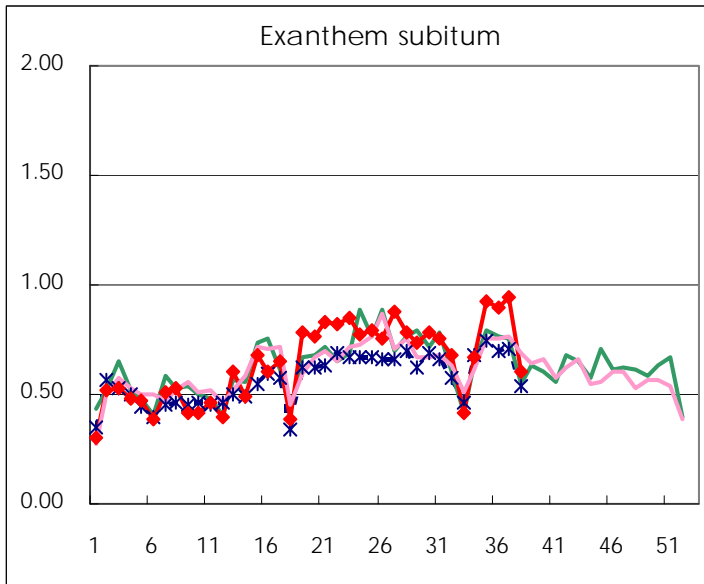
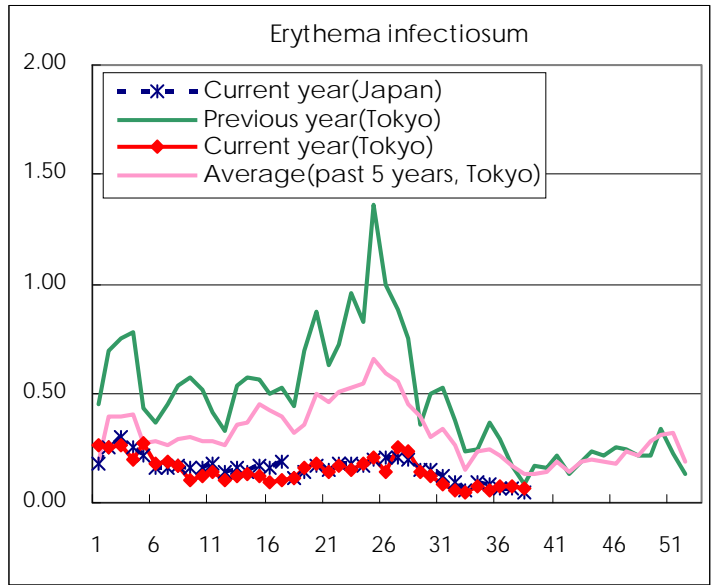
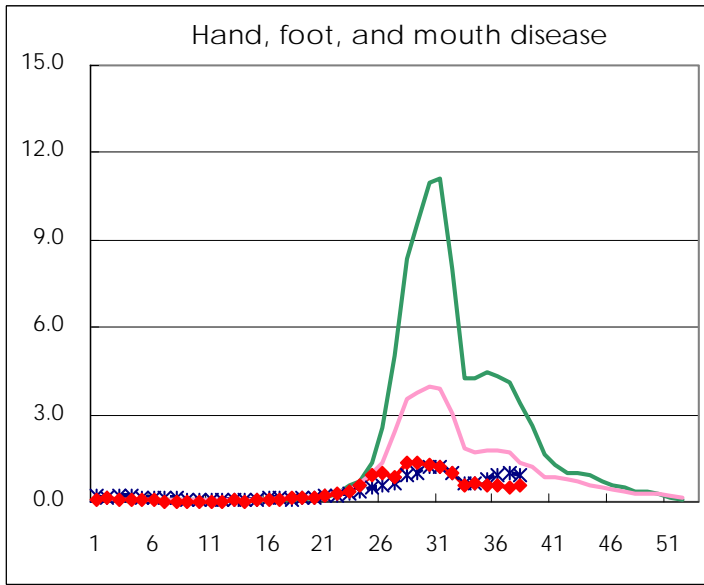
Number of patients with the diseases to be reported
by the designated clinics and hospitals

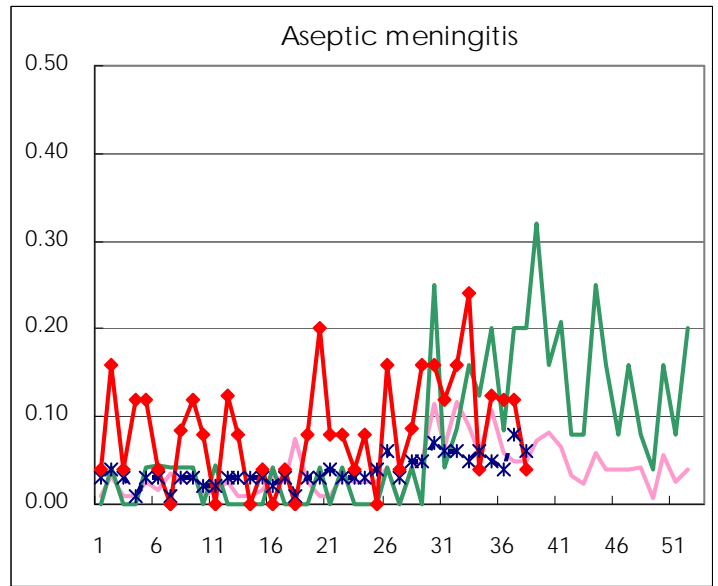
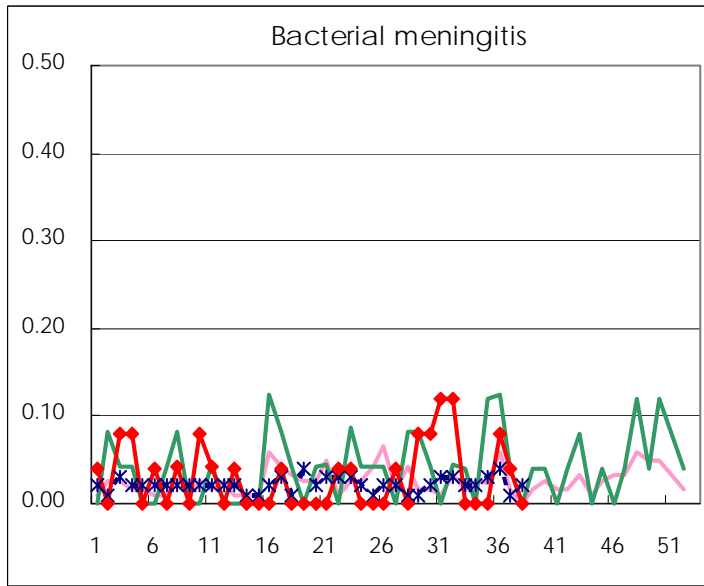
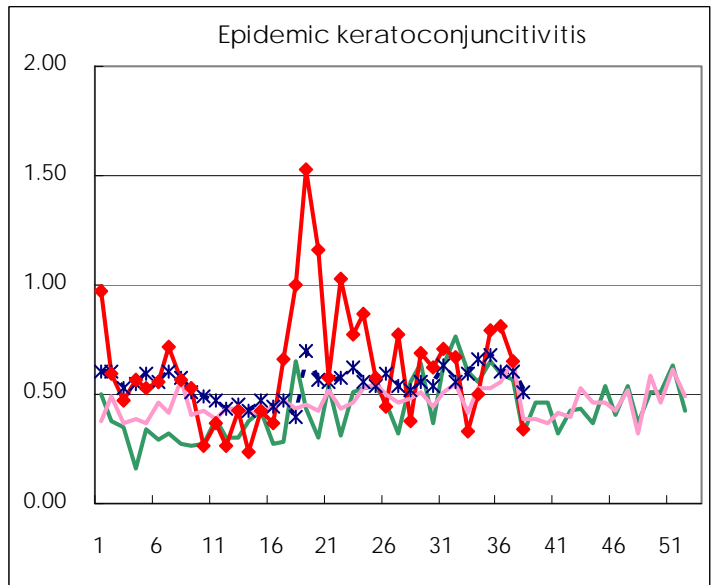
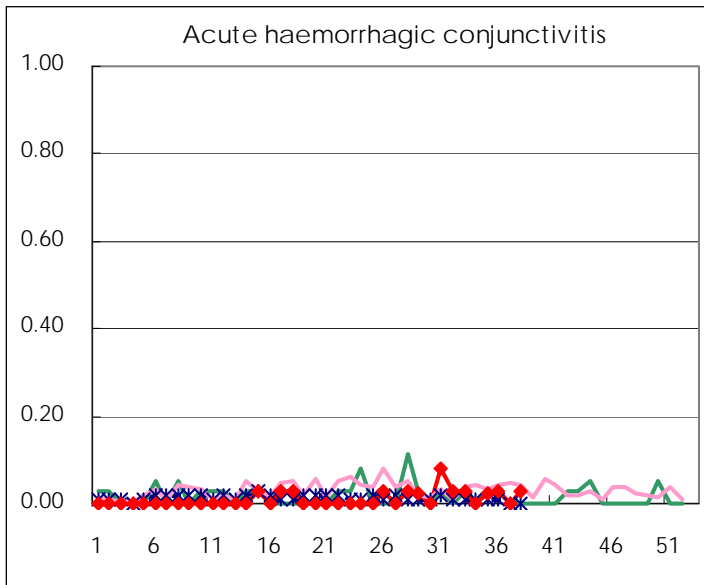
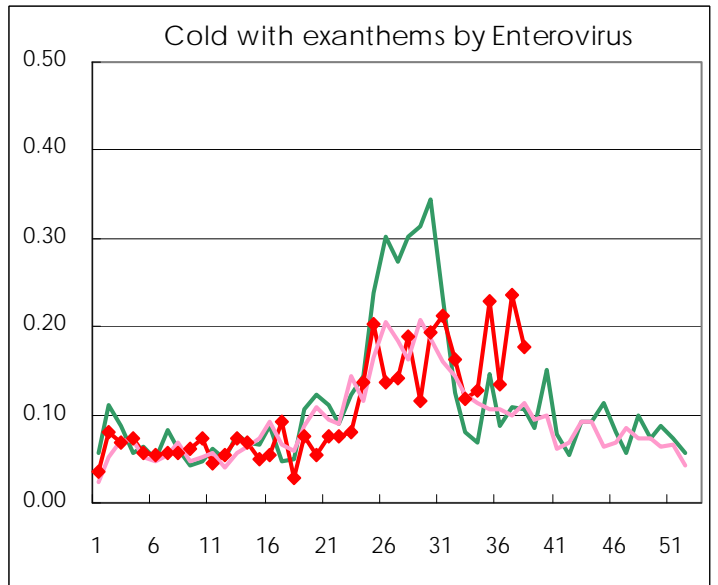
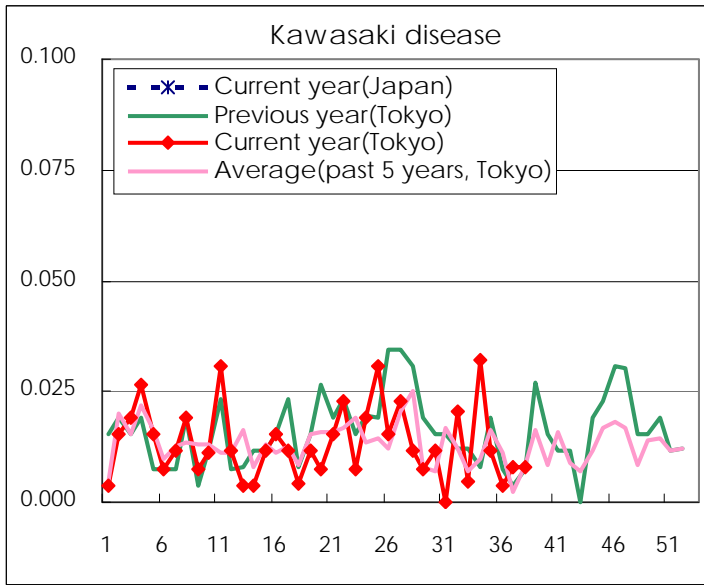
Diseases	Tokyo				
	35th	36th	37th	38th	/sentinel
Respiratory syncytial virus infection	251	317	358	332	1.31
Pharyngoconjunctival fever	118	115	194	148	0.58
Group A streptococcal pharyngitis	201	242	270	230	0.91
Infectious gastroenteritis	941	940	963	794	3.13
Chickenpox	67	114	82	104	0.41
Hand, foot, and mouth disease	154	154	132	140	0.55
Erythema infectiosum	15	20	20	16	0.06
Exanthem subitum	239	233	243	153	0.60
Pertussis	7	9	5	4	0.02
Herpangina	324	262	227	155	0.61
Mumps	66	57	75	65	0.26
Kawasaki disease	3	1	2	2	0.01
Cold with exanths by Enterovirus	59	35	61	45	0.18
Influenza	9	43	43	27	0.07
Acute hemorrhagic conjunctivitis	1	1		1	0.03
Epidemic keratoconjunctivitis	31	31	24	13	0.34
Bacterial meningitis		2	1		
Aseptic meningitis	3	3	3	1	0.04
Mycoplasma pneumonia	13	21	27	23	0.92
Chlamydial pneumonia (excluding psittacosis)					
Influenza-Associated Hospitalizations					

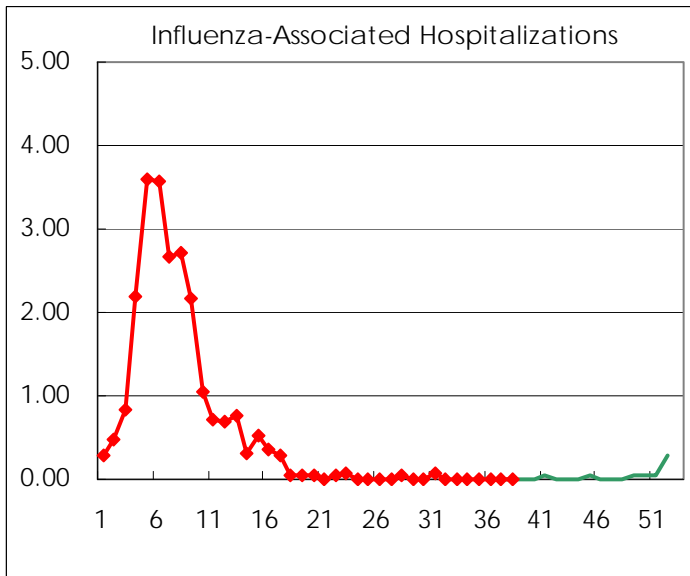
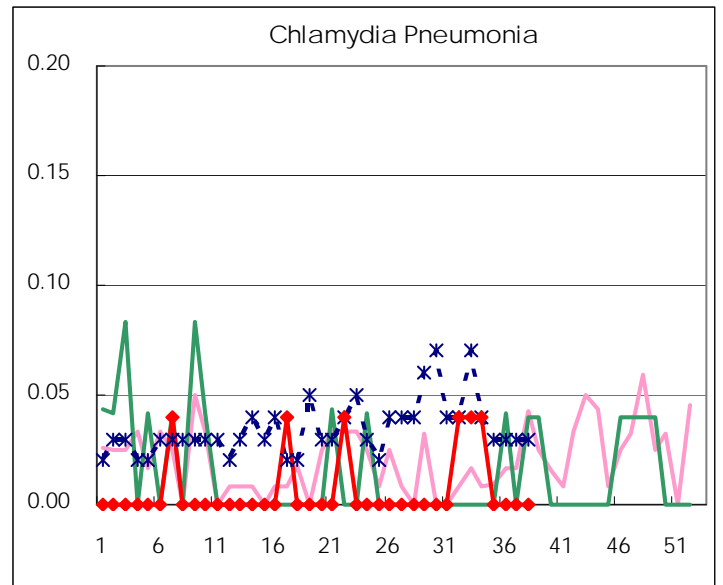
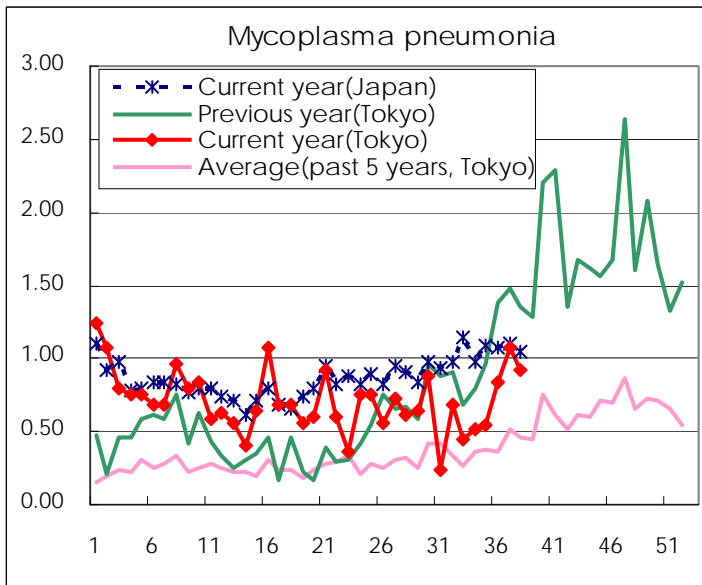
(Blank means 0.)

Disease Trend Graph (weekly reported cases per sentinel in comparison)









Number of sentinel facilities for weekly reporting		
Types of sentinels	Number of sentinels	Sentinels having reported
Pediatric	264	254
Influenza	419	405
Ophthalmic	39	38
Specially-designated	25	25

Tokyo Metropolitan Government
Infectious Disease Surveillance Center