
INFECTIOUS DISEASES WEEKLY REPORT

TOKYO IDWR

Tokyo Metropolitan Infectious Disease Surveillance Center

4 October 2012 / Number 39

Surveillance System in Tokyo, Japan

The infectious diseases which all physicians must report

All physicians must report to health centers the incidence of the diseases which are shown at page one. Health centers electronically report the individual cases to Tokyo Metropolitan Infectious Disease Surveillance Center.

The infectious diseases required to be reported by the sentinels

The numbers of patients who visit the sentinel clinics or hospitals during a week are reported to health centers in Tokyo. And they electronically report the numbers to Tokyo Metropolitan Infectious Disease Surveillance Center. We have about 500 sentinel clinics and hospitals in Tokyo.

1st Week is early January and 52nd Week is end of December.

Tokyo Metropolitan Institute of Public Health

TEL:81-3-3363-3213 FAX:81-3-5332-7365

e-mail:idsc@tokyo-eiken.go.jp

URL:idsc.tokyo-eiken.go.jp/

Number of patients with the diseases which all physicians must report

Category	Diseases	Tokyo				Japan		
		36th	37th	38th	39th	Cum 2012	39th	Cum 2012
I	Ebola hemorrhagic fever							
	Crimean-Congo hemorrhagic fever							
	Smallpox							
	South American hemorrhagic fever							
	Plague							
	Marburg disease							
	Lassa fever							
II	Acute poliomyelitis							
	Tuberculosis	89	109	58	67	3,414	335	21,720
	Diphtheria							
	Severe Acute Respiratory Syndrome(SARS)							
	Avian influenza H5N1							
III	Cholera							3
	Shigellosis	1	1	1		52	2	165
	Enterohemorrhagic Escherichia coli infection	12	12	10	7	186	105	3,001
	Typhoid fever	1	1		1	9	2	25
	Paratyphoid fever	1			1	8	1	16
IV	Hepatitis E					11		91
	West Nile fever							
	Hepatitis A				1	28	4	129
	Echinococcosis							10
	Yellow fever							
	Psittacosis							6
	Omsk hemorrhagic fever							
	Relapsing fever							
	Kyasanur forest disease							
	Q fever							
	Rabies							
	Coccidioidomycosis		1			1		2
	Monkeypox							
	Hemorrhagic fever with renal syndrome							
	Western equine encephalitis							
	Tick-borne encephalitis							
	Anthrax							
	Chikungunya fever							4
	Scrub typhus(Tsutsugamushi disease)					3		196
	Dengue fever	4	4	1	2	39	7	159
	Eastern equine encephalitis							
	Avian influenza (excluding H5N1)							
	Nipah virus infection							
	Japanese spotted fever						4	104
	Japanese encephalitis						2	2
	Hantavirus pulmonary syndrome							
	Herpes B virus infection							
	Glanders							
	Brucellosis							
	Venezuelan equine encephalitis							
	Hendra virus infection							
Epidemic typhus								
Botulism							3	
Malaria	2	1	1		18	1	59	
Tularemia								
Lyme disease							9	
Lyssavirus infection(excluding rabies)								
Rift valley fever								
Melioidosis								
Legionellosis	2		2		43	9	617	
Leptospirosis	1				4	1	14	
Rocky mountain spotted fever								

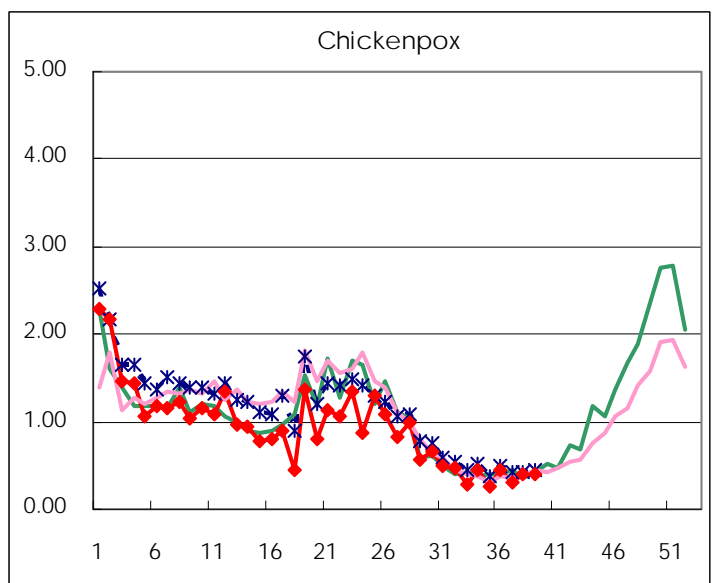
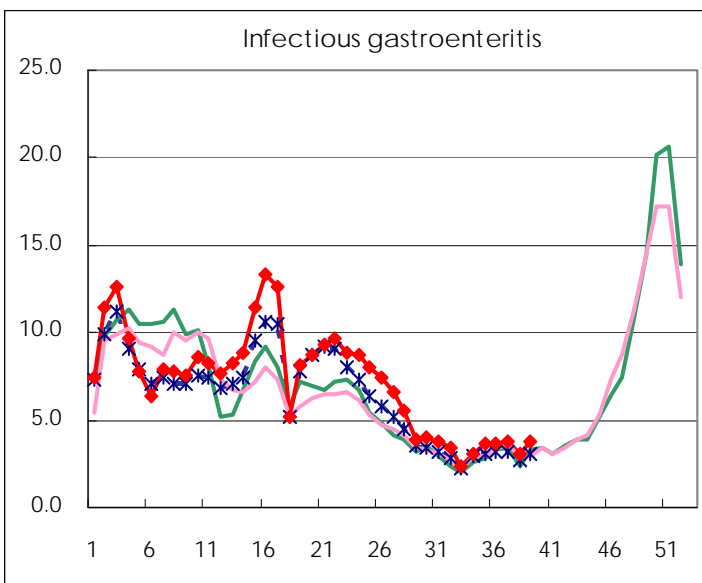
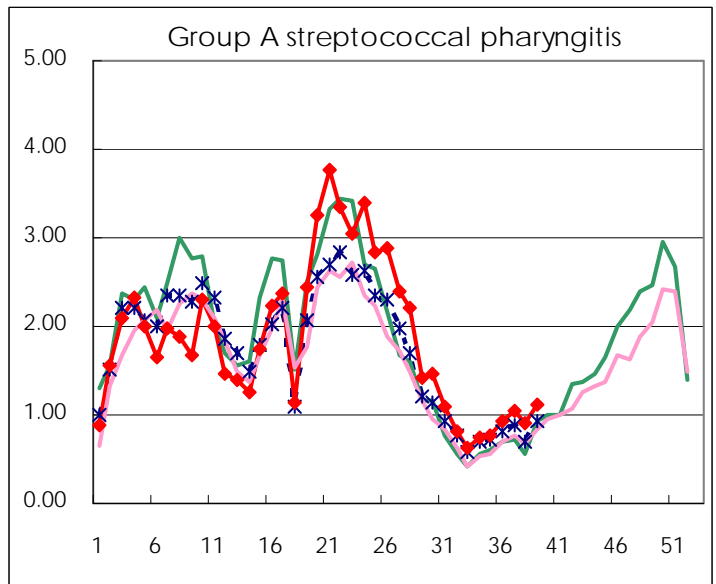
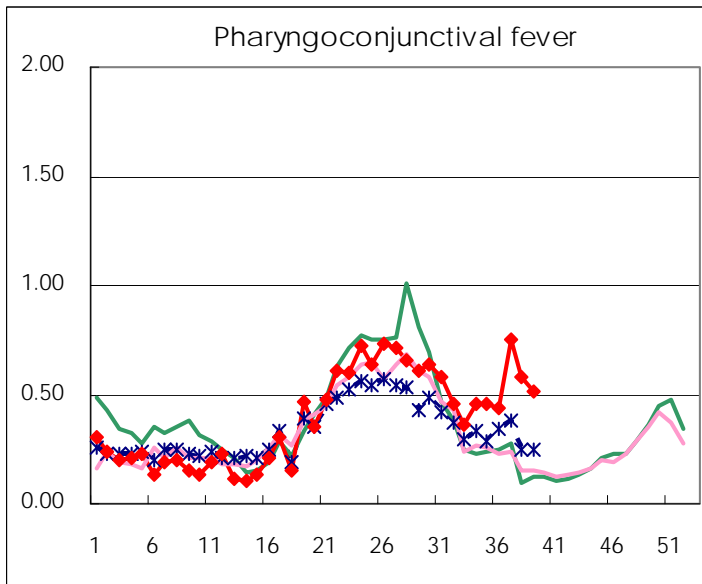
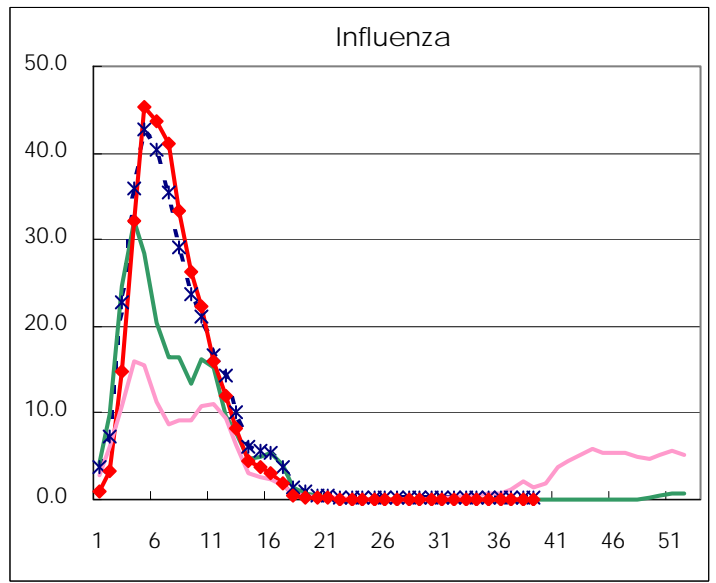
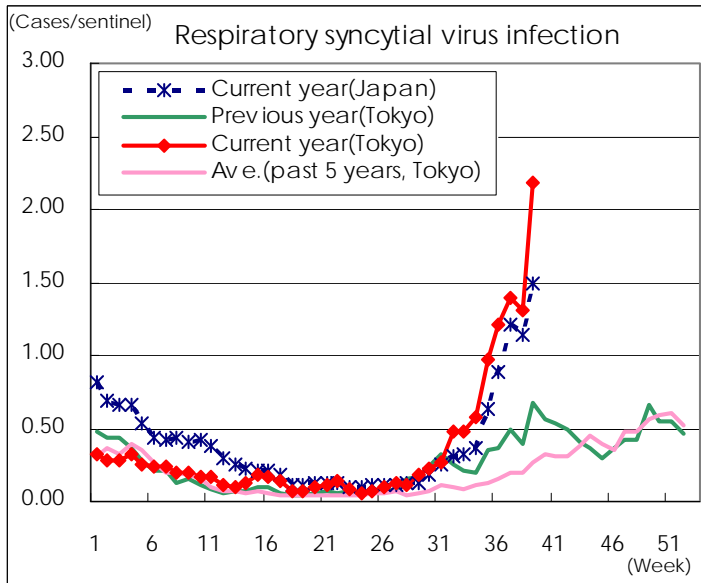
Category	Diseases	Tokyo					Japan	
		36th	37th	38th	39th	Cum 2012	39th	Cum 2012
V	Amebiasis	7	10	5	4	145	12	652
	Viral hepatitis(excluding hepatitis A and E)	1	2	2	1	38	2	165
	Acute encephalitis(excluding JE and WNE)		1	1		26	3	281
	Cryptosporidiosis					2		6
	Creutzfeldt-Jakob disease	2				11	3	136
	Severe invasive streptococcal infections(TSLS)			1		17	2	184
	Acquired immunodeficiency syndrome (AIDS)	11	11	4	9	339	15	1,029
	Giardiasis	1				10	1	51
	Meningococcal meningitis							9
	Congenital rubella syndrome							
	Syphilis	8	3	2	11	215	18	640
	Tetanus				1	4	1	86
	Vancomycin-resistant S. aureus infection							
	Vancomycin-resistant Enterococcus infection		1			8		70
	Rubella	22	33	17	22	421	52	1,738
	Measles	4	1	1		68	3	263

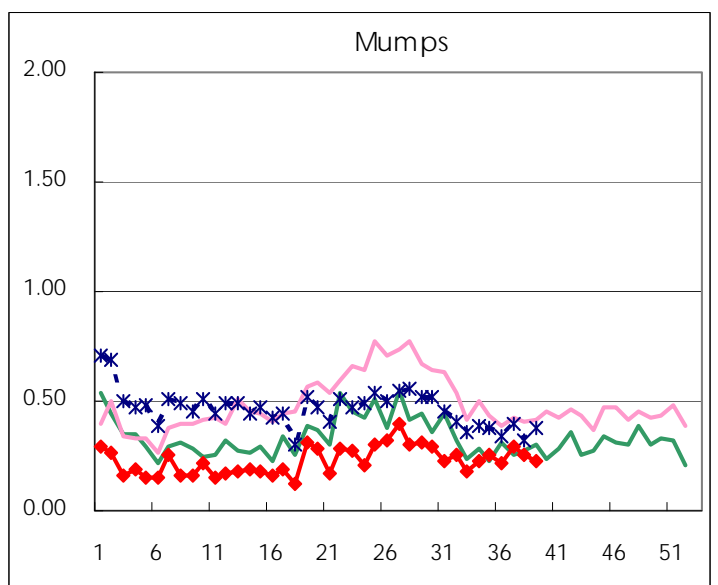
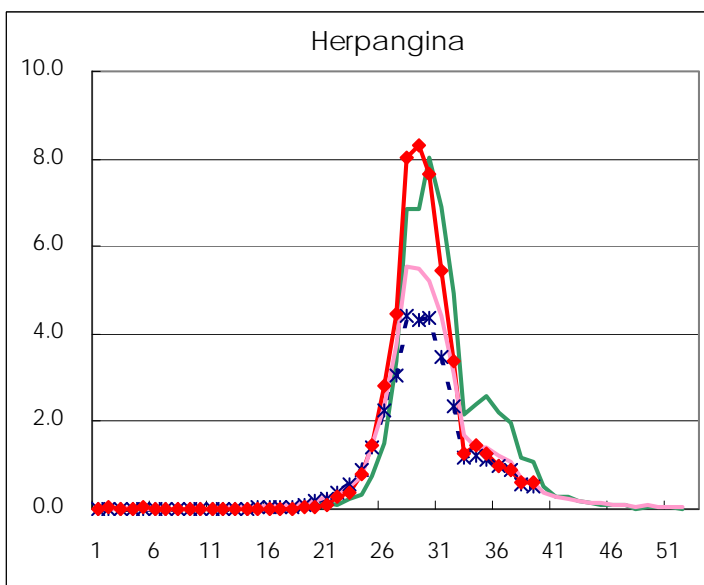
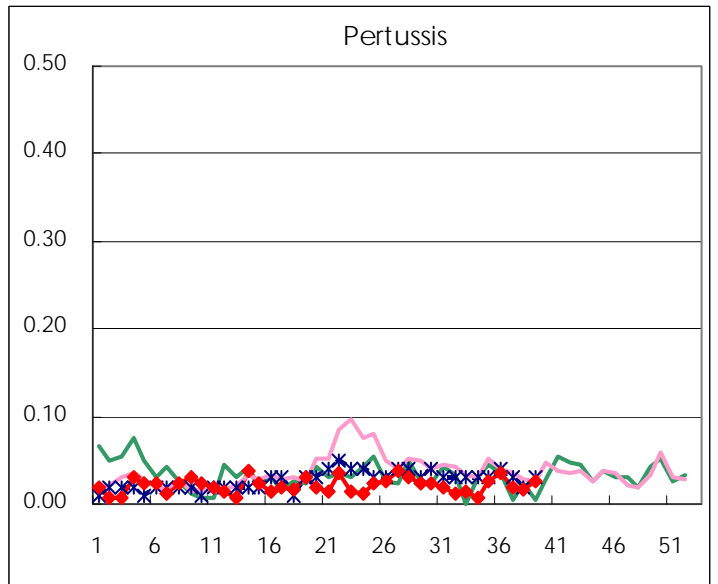
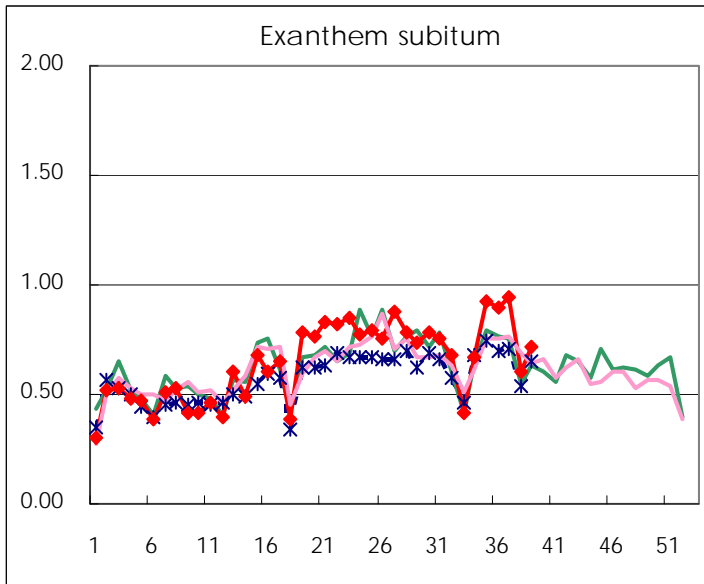
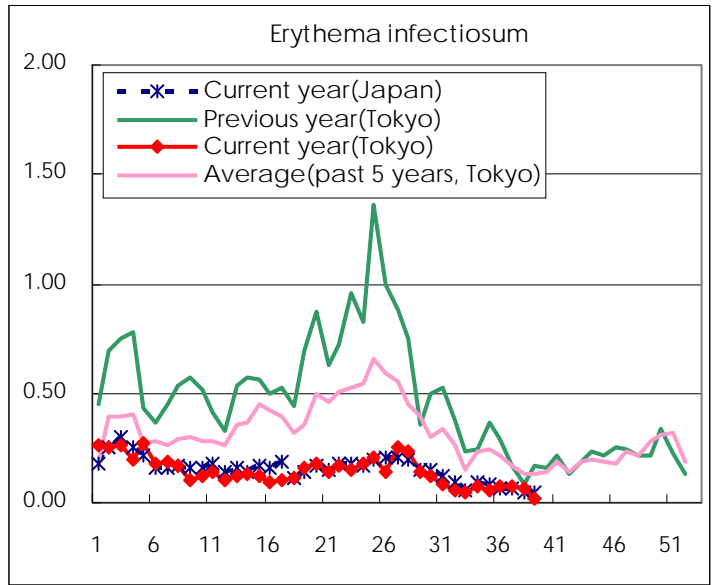
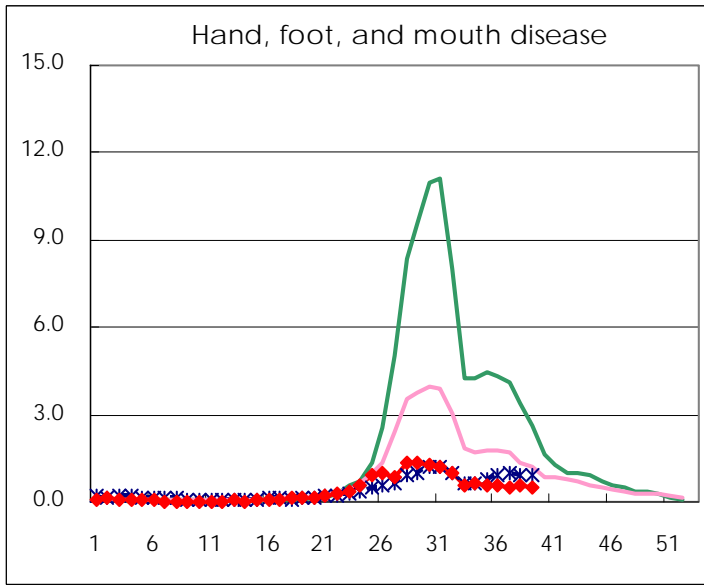
Number of patients with the diseases to be reported
by the designated clinics and hospitals

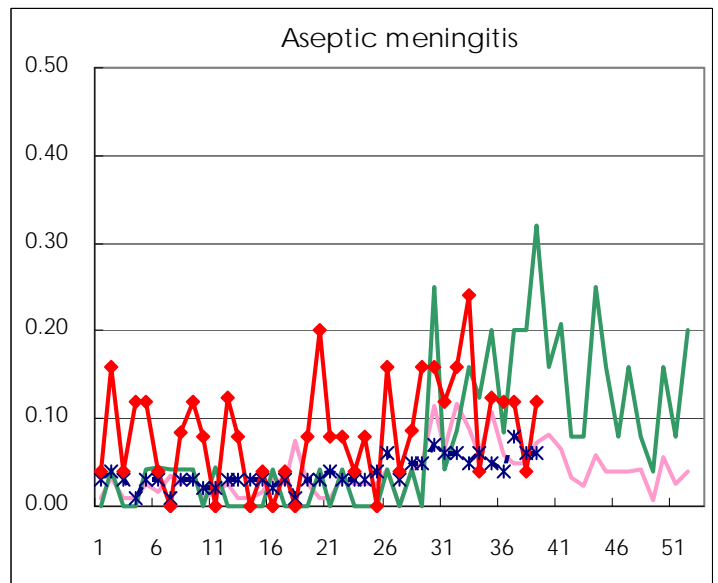
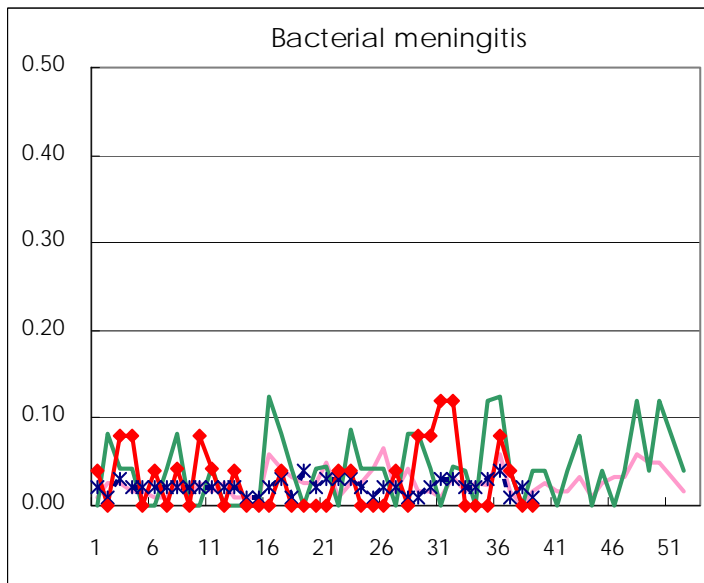
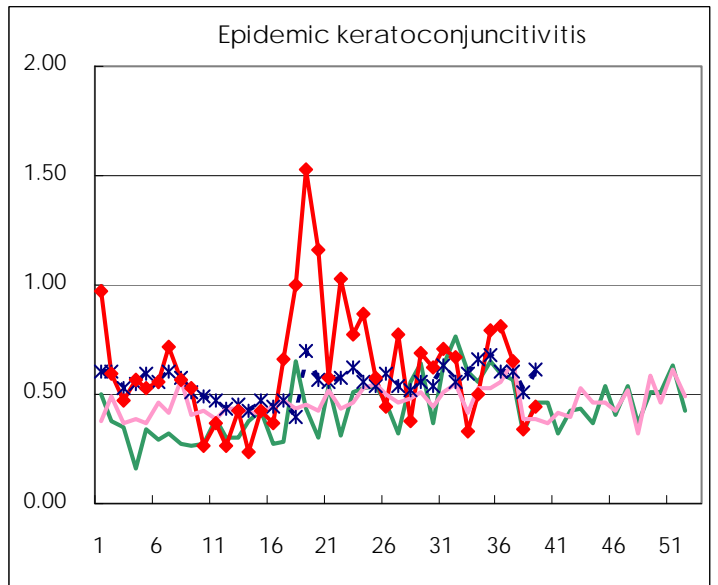
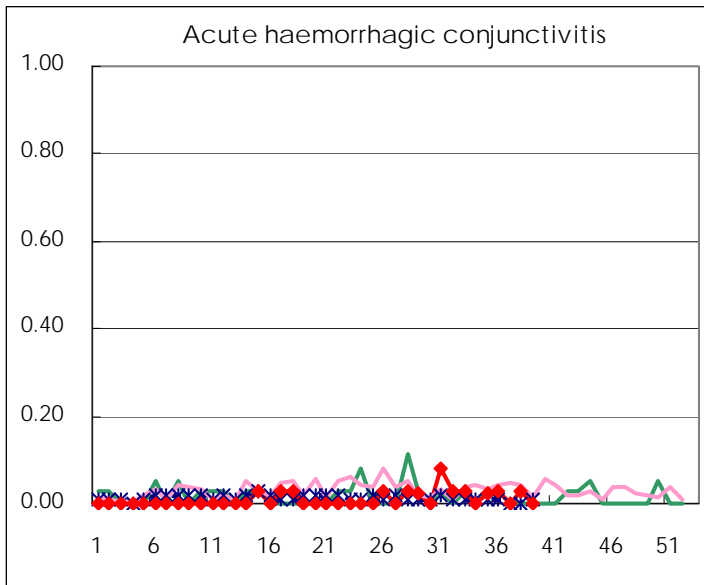
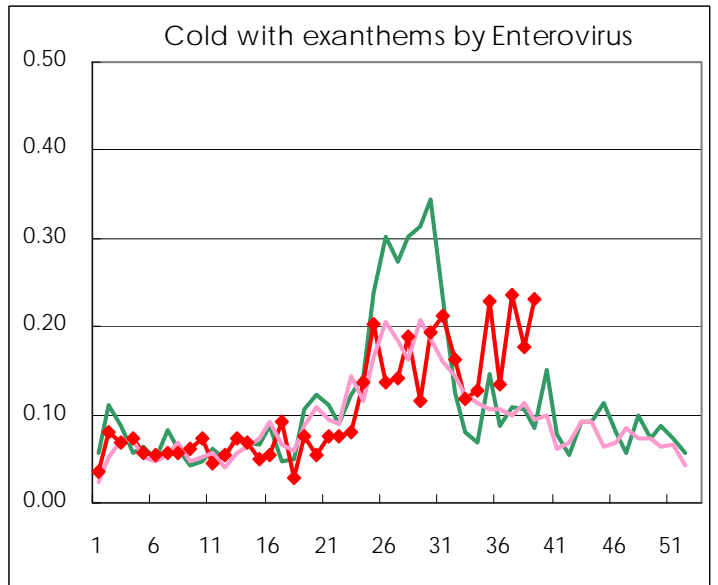
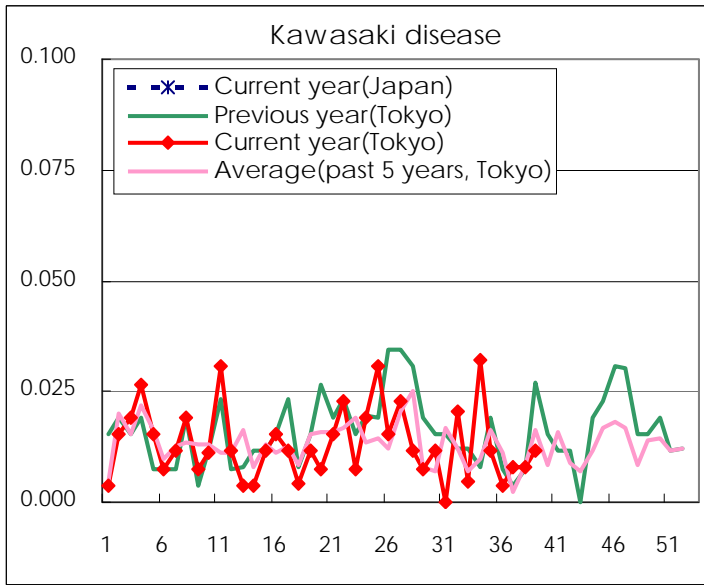
Diseases	Tokyo				
	36th	37th	38th	39th	/sentinel
Respiratory syncytial virus infection	317	358	333	569	2.19
Pharyngoconjunctival fever	115	194	148	133	0.51
Group A streptococcal pharyngitis	242	270	232	290	1.12
Infectious gastroenteritis	940	963	796	975	3.75
Chickenpox	114	82	104	103	0.40
Hand, foot, and mouth disease	154	132	140	133	0.51
Erythema infectiosum	20	20	16	5	0.02
Exanthem subitum	233	243	153	187	0.72
Pertussis	9	5	4	7	0.03
Herpangina	262	227	155	154	0.59
Mumps	57	75	65	58	0.22
Kawasaki disease	1	2	2	3	0.01
Cold with exanths by Enterovirus	35	61	45	60	0.23
Influenza	43	43	27	15	0.04
Acute hemorrhagic conjunctivitis	1		1		
Epidemic keratoconjunctivitis	31	24	13	17	0.45
Bacterial meningitis	2	1			
Aseptic meningitis	3	3	1	3	0.12
Mycoplasma pneumonia	21	27	23	29	1.16
Chlamydial pneumonia (excluding psittacosis)				2	0.08
Influenza-Associated Hospitalizations				1	0.04

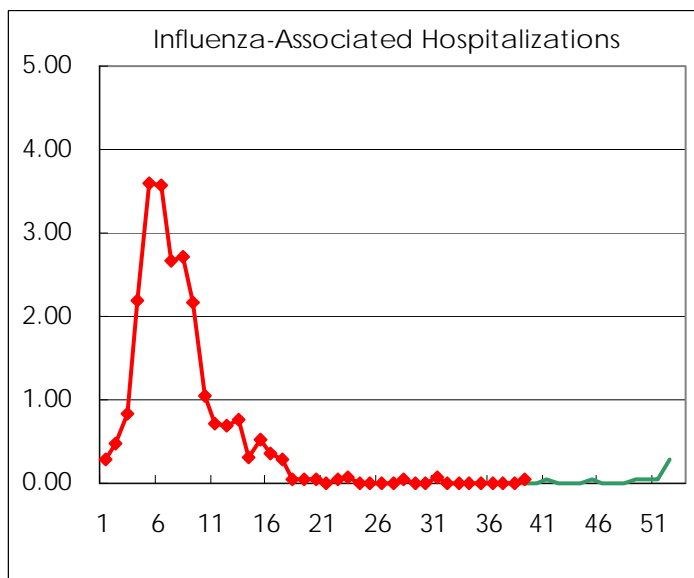
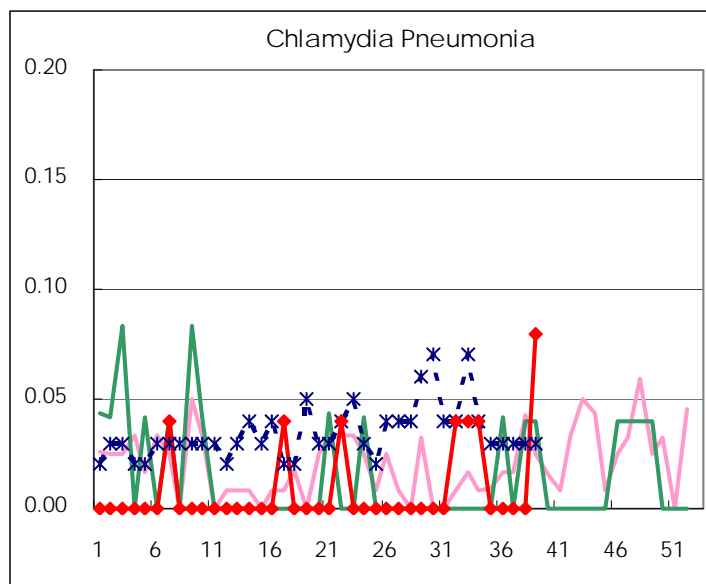
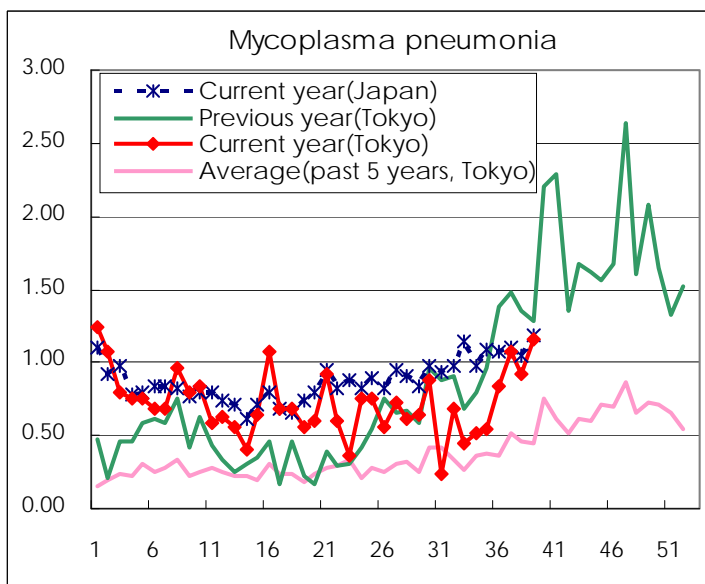
(Blank means 0.)

Disease Trend Graph (weekly reported cases per sentinel in comparison)









Number of sentinel facilities for weekly reporting		
Types of sentinels	Number of sentinels	Sentinels having reported
Pediatric	264	260
Influenza	419	413
Ophthalmic	39	38
Specially-designated	25	25

Tokyo Metropolitan Government
Infectious Disease Surveillance Center