

---

INFECTIOUS DISEASES WEEKLY REPORT

# TOKYO IDWR

Tokyo Metropolitan Infectious Disease Surveillance Center

## 11 October 2012 / Number 40

### Surveillance System in Tokyo, Japan

The infectious diseases which all physicians must report

All physicians must report to health centers the incidence of the diseases which are shown at page one. Health centers electronically report the individual cases to Tokyo Metropolitan Infectious Disease Surveillance Center.

The infectious diseases required to be reported by the sentinels

The numbers of patients who visit the sentinel clinics or hospitals during a week are reported to health centers in Tokyo. And they electronically report the numbers to Tokyo Metropolitan Infectious Disease Surveillance Center. We have about 500 sentinel clinics and hospitals in Tokyo.

1st Week is early January and 52nd Week is end of December.

Tokyo Metropolitan Institute of Public Health

TEL:81-3-3363-3213 FAX:81-3-5332-7365

e-mail:[idsc@tokyo-eiken.go.jp](mailto:idsc@tokyo-eiken.go.jp)

URL:[idsc.tokyo-eiken.go.jp/](http://idsc.tokyo-eiken.go.jp/)

---

## Number of patients with the diseases which all physicians must report

Category	Diseases	Tokyo				Japan		
		37th	38th	39th	40th	Cum 2012	40th	Cum 2012
I	Ebola hemorrhagic fever							
	Crimean-Congo hemorrhagic fever							
	Smallpox							
	South American hemorrhagic fever							
	Plague							
	Marburg disease							
	Lassa fever							
II	Acute poliomyelitis							
	Tuberculosis	111	59	81	73	3,506	329	22,227
	Diphtheria							
	Severe Acute Respiratory Syndrome(SARS)							
	Avian influenza H5N1							
III	Cholera							3
	Shigellosis	1	1		2	54	6	171
	Enterohemorrhagic Escherichia coli infection	12	10	7	10	196	102	3,125
	Typhoid fever	1		1		9		25
	Paratyphoid fever			1		8	1	17
IV	Hepatitis E				1	12	1	93
	West Nile fever							
	Hepatitis A			1		28	1	131
	Echinococcosis							10
	Yellow fever							
	Psittacosis							6
	Omsk hemorrhagic fever							
	Relapsing fever							
	Kyasanur forest disease							
	Q fever							
	Rabies							
	Coccidioidomycosis	1				1		2
	Monkeypox							
	Hemorrhagic fever with renal syndrome							
	Western equine encephalitis							
	Tick-borne encephalitis							
	Anthrax							
	Chikungunya fever				1	1	1	5
	Scrub typhus(Tsutsugamushi disease)					3	2	198
	Dengue fever	4	1	2	1	40	10	170
	Eastern equine encephalitis							
	Avian influenza (excluding H5N1)							
	Nipah virus infection							
	Japanese spotted fever						9	113
	Japanese encephalitis							2
	Hantavirus pulmonary syndrome							
	Herpes B virus infection							
	Glanders							
	Brucellosis							
	Venezuelan equine encephalitis							
	Hendra virus infection							
	Epidemic typhus							
Botulism							3	
Malaria	1	1		1	19	1	60	
Tularemia								
Lyme disease							9	
Lyssavirus infection(excluding rabies)								
Rift valley fever								
Melioidosis								
Legionellosis		2		2	45	17	640	
Leptospirosis					4	1	16	
Rocky mountain spotted fever								

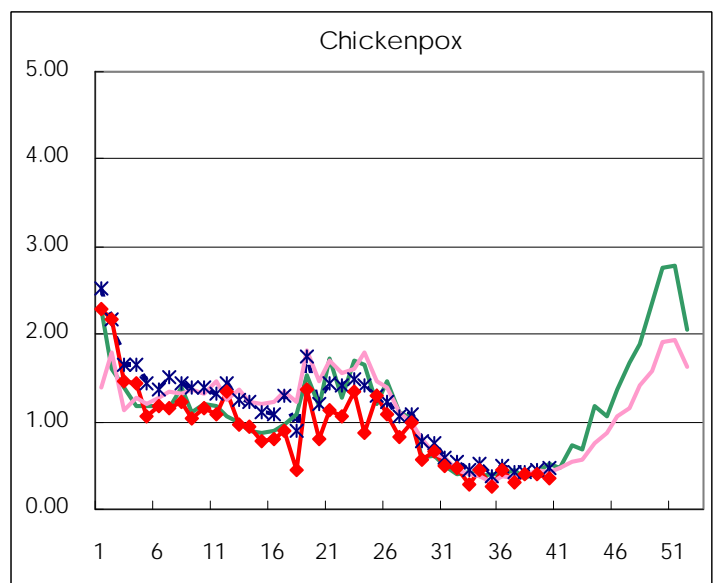
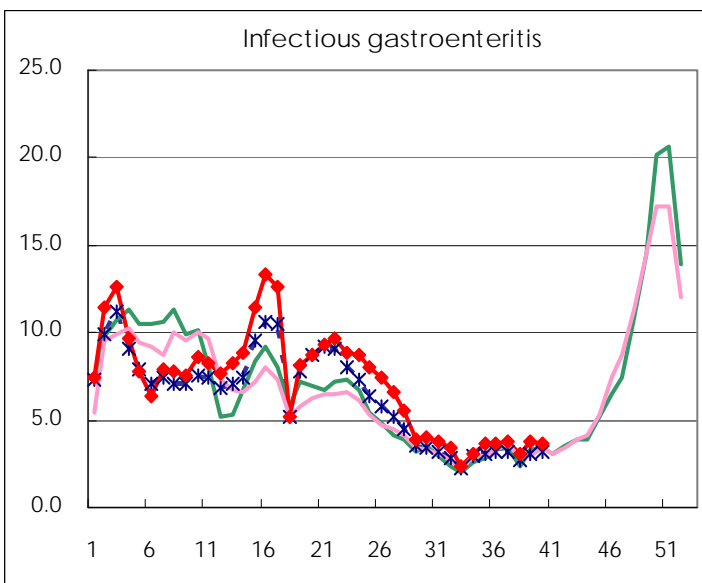
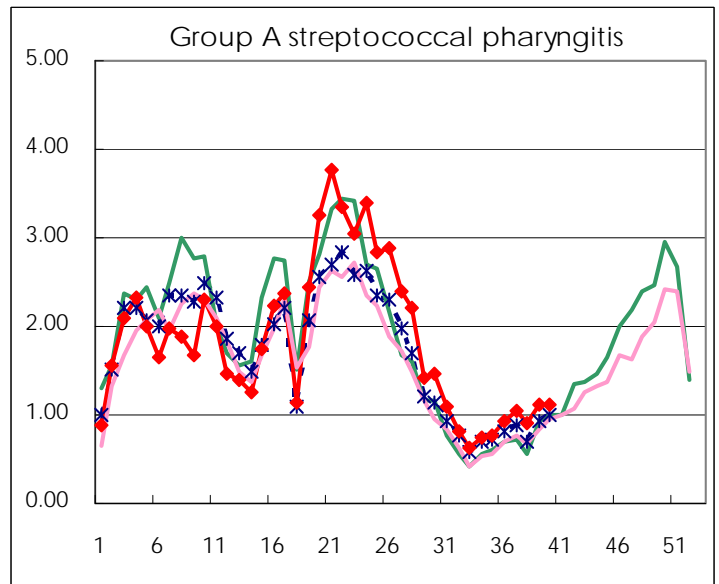
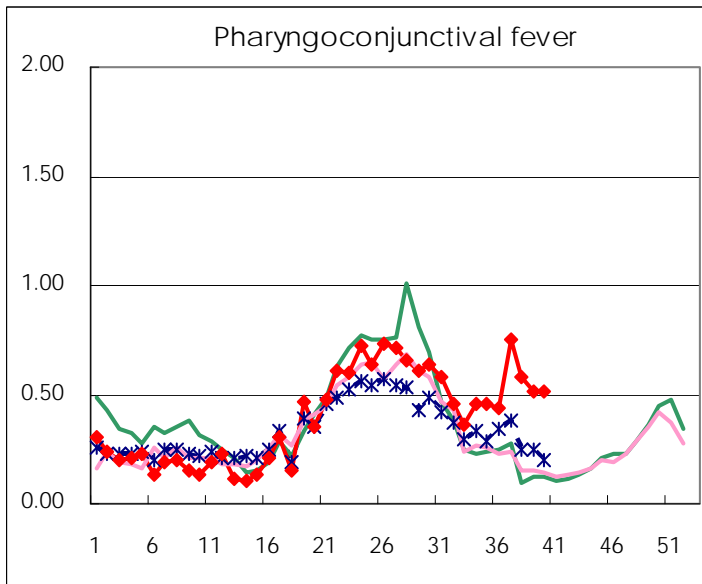
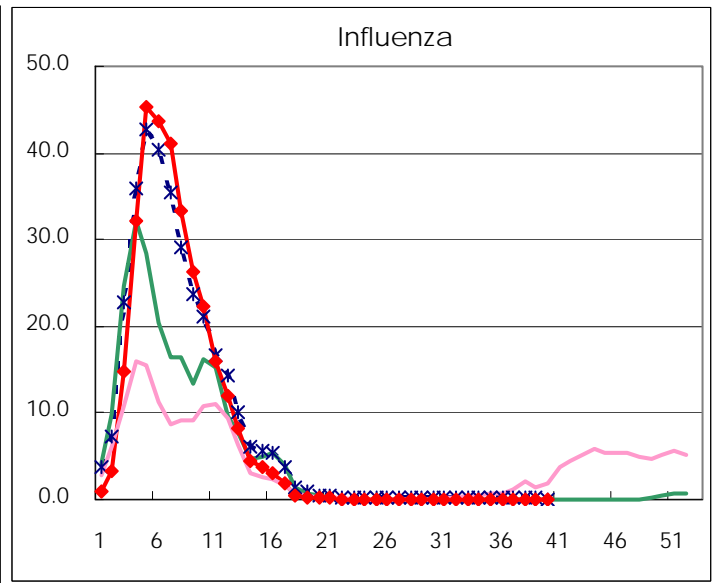
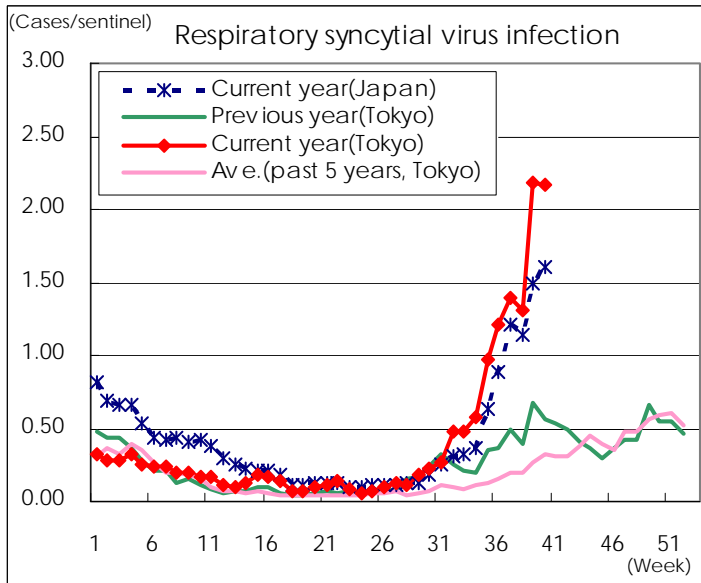
Category	Diseases	Tokyo					Japan	
		37th	38th	39th	40th	Cum 2012	40th	Cum 2012
V	Amebiasis	10	5	4	3	148	12	673
	Viral hepatitis(excluding hepatitis A and E)	2	2	1	3	41	2	169
	Acute encephalitis(excluding JE and WNE)	1	1		1	27	4	293
	Cryptosporidiosis					2		6
	Creutzfeldt-Jakob disease				1	12		137
	Severe invasive streptococcal infections(TSLS)		1		1	18	4	190
	Acquired immunodeficiency syndrome (AIDS)	11	4	9	9	348	16	1,055
	Giardiasis					10		51
	Meningococcal meningitis							10
	Congenital rubella syndrome							
	Syphilis	3	2	11	7	222	14	660
	Tetanus			1		4	1	87
	Vancomycin-resistant S. aureus infection							
	Vancomycin-resistant Enterococcus infection	1			1	9	1	72
	Rubella	33	17	22	17	438	42	1,790
	Measles	1	1		3	71	5	268

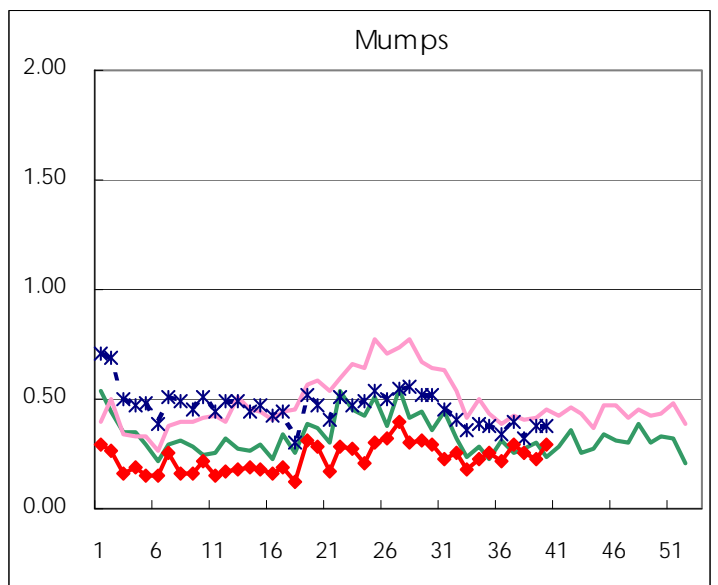
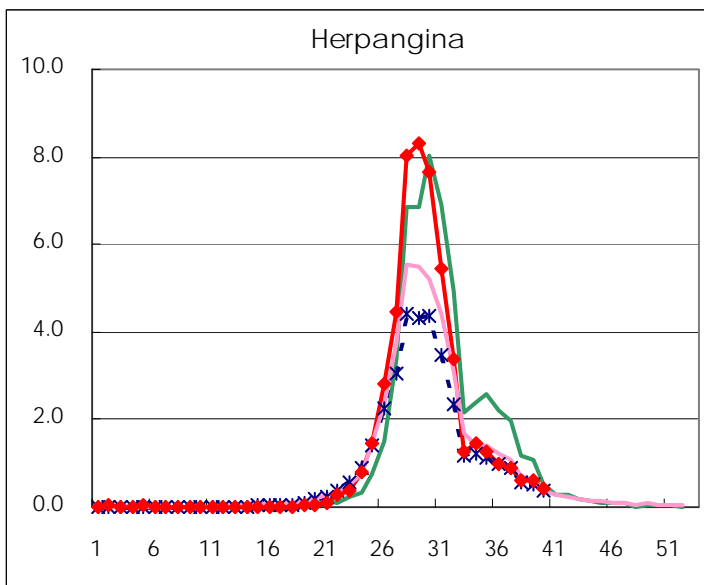
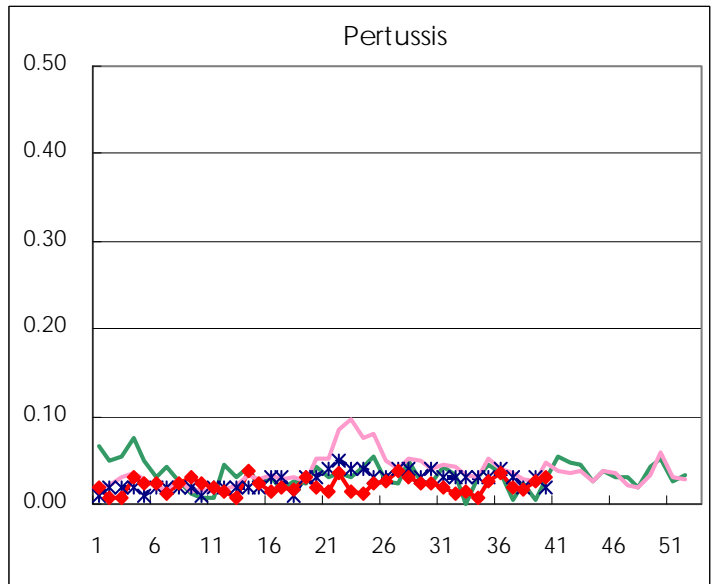
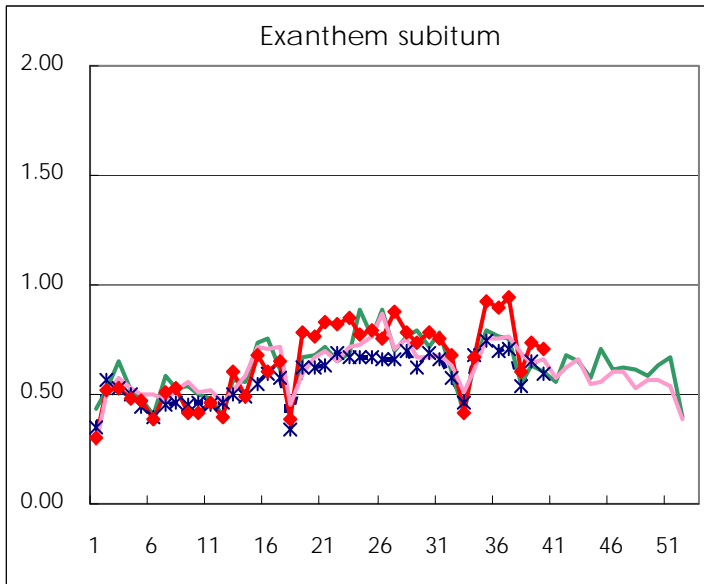
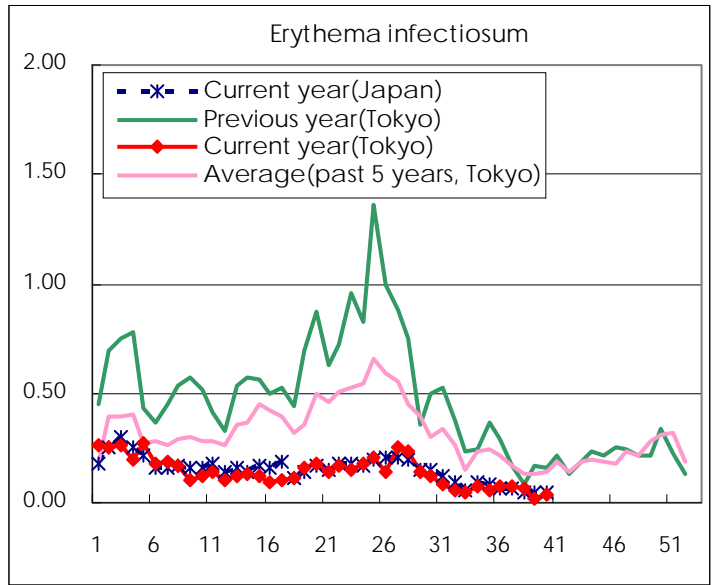
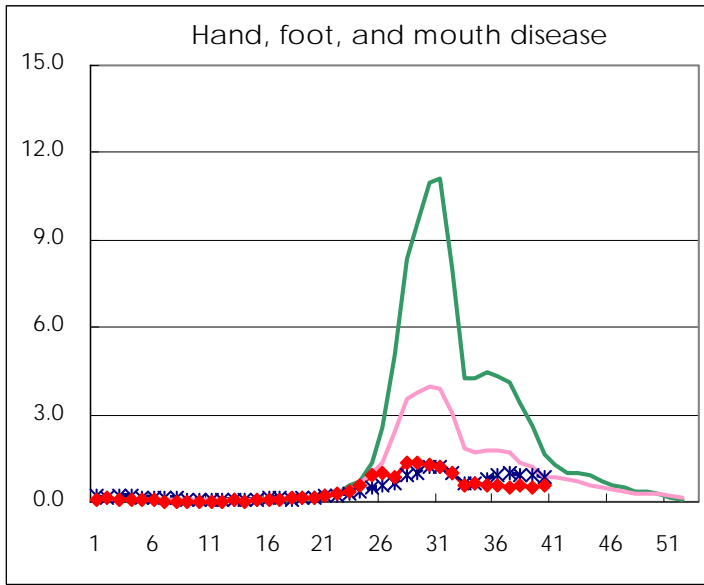
Number of patients with the diseases to be reported  
by the designated clinics and hospitals

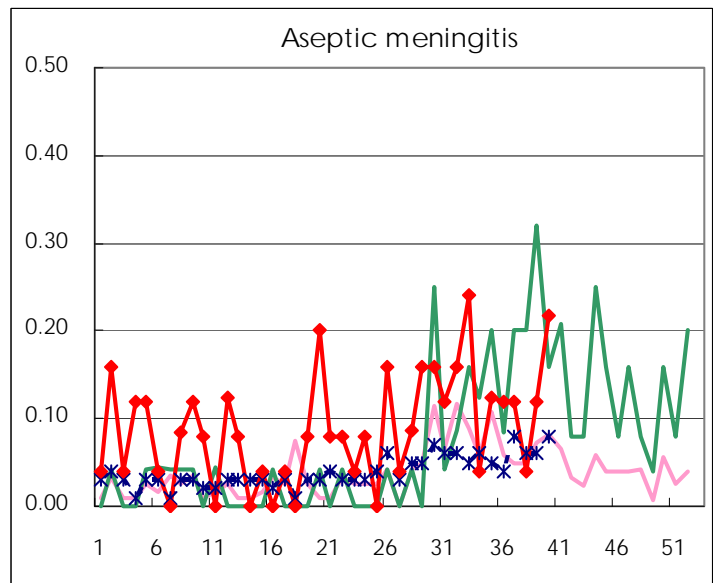
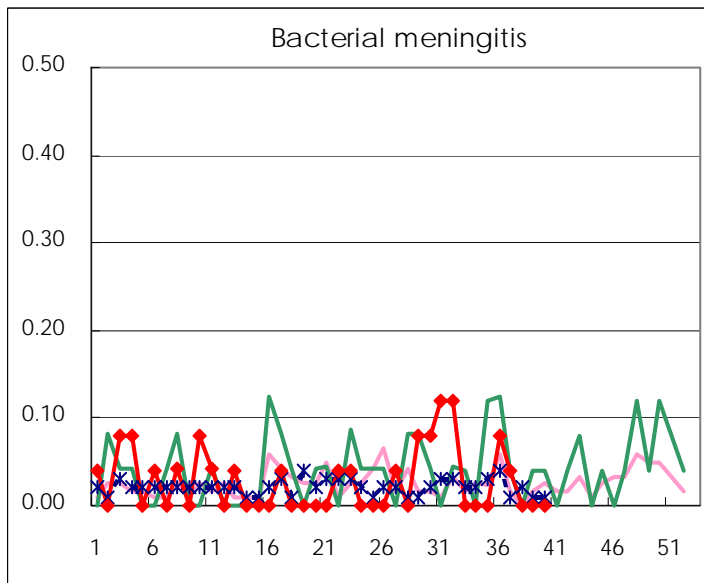
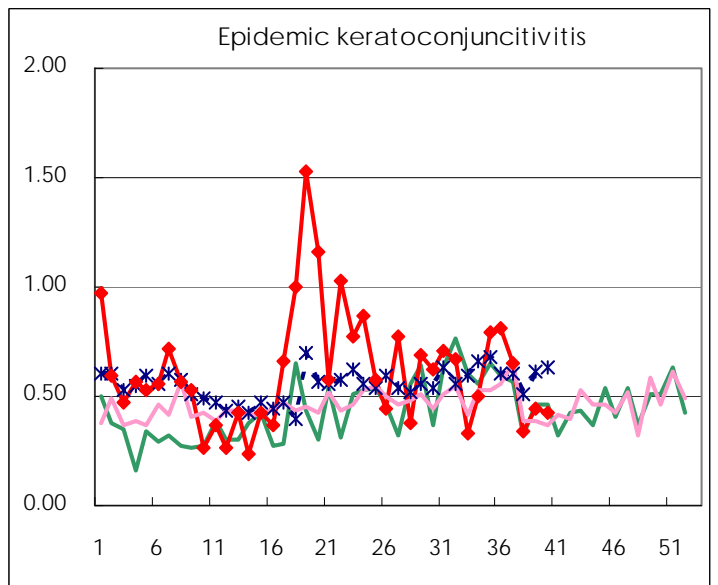
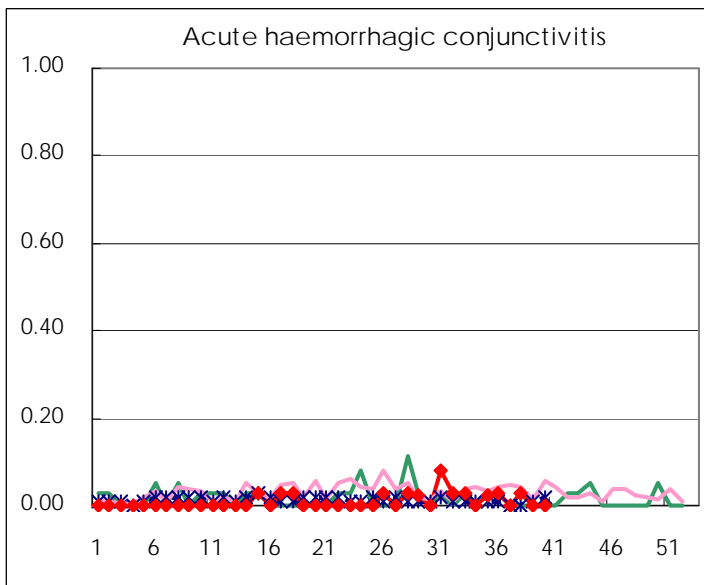
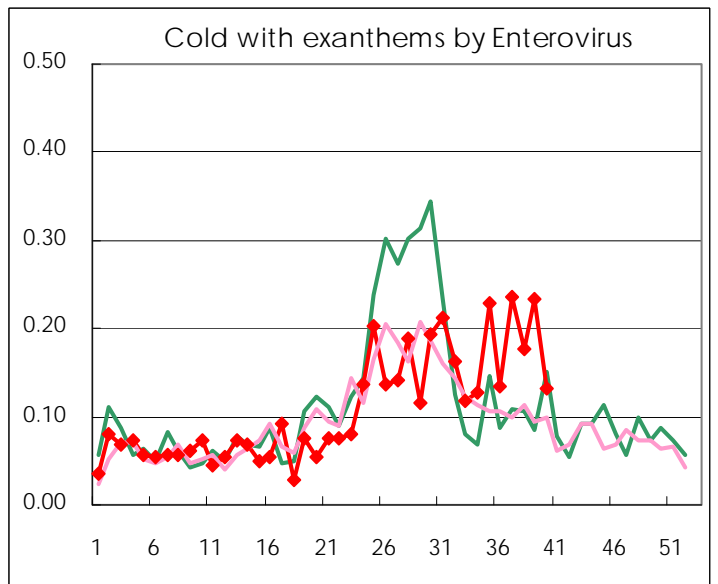
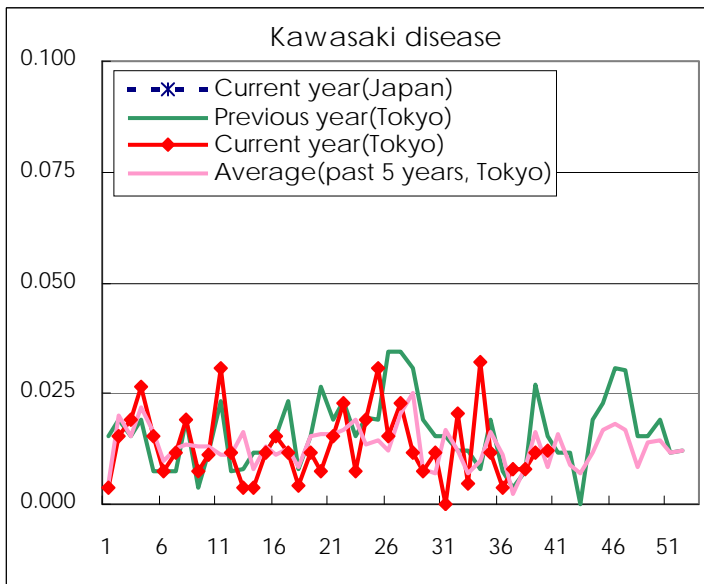
Diseases	Tokyo				
	37th	38th	39th	40th	/sentinel
Respiratory syncytial virus infection	358	333	569	548	2.17
Pharyngoconjunctival fever	194	148	133	129	0.51
Group A streptococcal pharyngitis	270	232	292	282	1.12
Infectious gastroenteritis	963	796	998	931	3.69
Chickenpox	82	104	106	91	0.36
Hand, foot, and mouth disease	132	140	134	143	0.57
Erythema infectiosum	20	16	5	10	0.04
Exanthem subitum	243	153	191	178	0.71
Pertussis	5	4	7	8	0.03
Herpangina	227	155	156	110	0.44
Mumps	75	65	58	73	0.29
Kawasaki disease	2	2	3	3	0.01
Cold with exanths by Enterovirus	61	45	61	33	0.13
Influenza	43	27	15	11	0.03
Acute hemorrhagic conjunctivitis		1			
Epidemic keratoconjunctivitis	24	13	17	16	0.42
Bacterial meningitis	1				
Aseptic meningitis	3	1	3	5	0.22
Mycoplasma pneumonia	27	23	29	30	1.30
Chlamydial pneumonia (excluding psittacosis)			2		
Influenza-Associated Hospitalizations			1	3	0.12

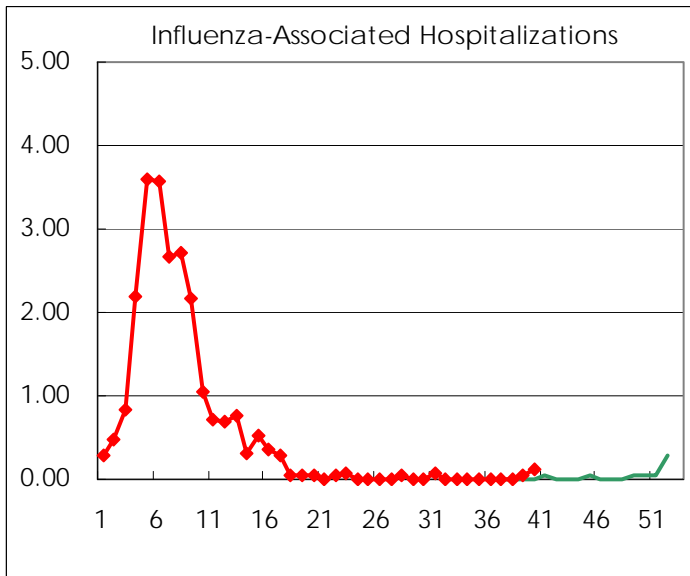
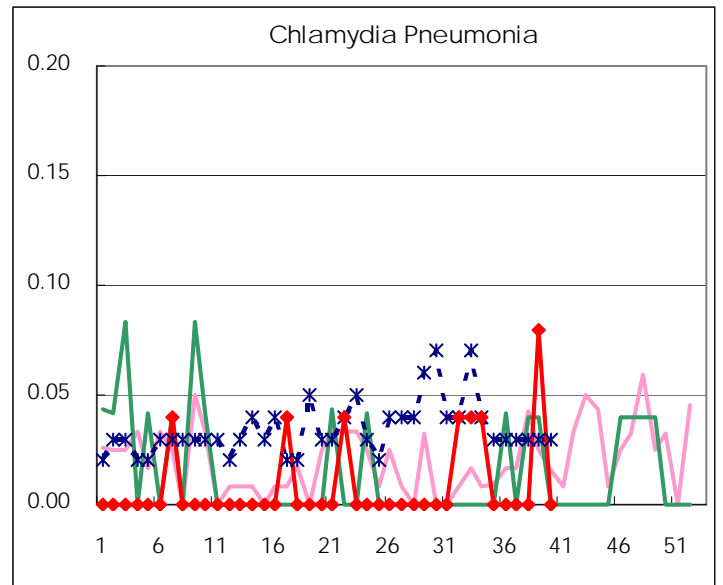
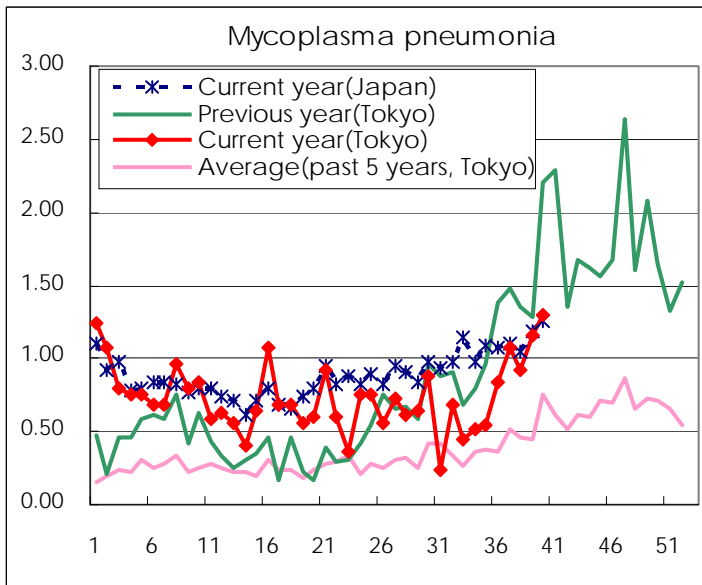
( Blank means 0. )

# Disease Trend Graph (weekly reported cases per sentinel in comparison)









Number of sentinel facilities for weekly reporting		
Types of sentinels	Number of sentinels	Sentinels having reported
Pediatric	264	252
Influenza	419	400
Ophthalmic	39	38
Specially-designated	25	23

Tokyo Metropolitan Government  
Infectious Disease Surveillance Center