
INFECTIOUS DISEASES WEEKLY REPORT

TOKYO IDWR

Tokyo Metropolitan Infectious Disease Surveillance Center

25 October 2012 / Number 42

Surveillance System in Tokyo, Japan

The infectious diseases which all physicians must report

All physicians must report to health centers the incidence of the diseases which are shown at page one. Health centers electronically report the individual cases to Tokyo Metropolitan Infectious Disease Surveillance Center.

The infectious diseases required to be reported by the sentinels

The numbers of patients who visit the sentinel clinics or hospitals during a week are reported to health centers in Tokyo. And they electronically report the numbers to Tokyo Metropolitan Infectious Disease Surveillance Center. We have about 500 sentinel clinics and hospitals in Tokyo.

1st Week is early January and 52nd Week is end of December.

Tokyo Metropolitan Institute of Public Health

TEL:81-3-3363-3213 FAX:81-3-5332-7365

e-mail:idsc@tokyo-eiken.go.jp

URL:idsc.tokyo-eiken.go.jp/

Number of patients with the diseases which all physicians must report

Category	Diseases	Tokyo				Japan			
		39th	40th	41st	42nd	Cum 2012	42nd	Cum 2012	
I	Ebola hemorrhagic fever								
	Crimean-Congo hemorrhagic fever								
	Smallpox								
	South American hemorrhagic fever								
	Plague								
	Marburg disease								
	Lassa fever								
II	Acute poliomyelitis								
	Tuberculosis	87	87	64	69	3,663	374	23,390	
	Diphtheria								
	Severe Acute Respiratory Syndrome(SARS)								
	Avian influenza H5N1								
III	Cholera							3	
	Shigellosis		2	1	3	58	7	181	
	Enterohemorrhagic Escherichia coli infection	7	10	6	27	229	121	3,350	
	Typhoid fever	1				9	1	27	
	Paratyphoid fever	1				8		17	
IV	Hepatitis E		1	2		14		95	
	West Nile fever								
	Hepatitis A	1			1	29	4	138	
	Echinococcosis							11	
	Yellow fever								
	Psittacosis							6	
	Omsk hemorrhagic fever								
	Relapsing fever								
	Kyasanur forest disease								
	Q fever								
	Rabies								
	Coccidioidomycosis					1		2	
	Monkeypox								
	Hemorrhagic fever with renal syndrome								
	Western equine encephalitis								
	Tick-borne encephalitis								
	Anthrax								
	Chikungunya fever		1	1	1	3	1	7	
	Scrub typhus(Tsutsugamushi disease)						3	5	203
	Dengue fever	2	1	4	1	45	5	183	
	Eastern equine encephalitis								
	Avian influenza (excluding H5N1)								
	Nipah virus infection								
	Japanese spotted fever						5	133	
	Japanese encephalitis							2	
	Hantavirus pulmonary syndrome								
	Herpes B virus infection								
	Glanders								
	Brucellosis								
	Venezuelan equine encephalitis								
	Hendra virus infection								
	Epidemic typhus								
Botulism							3		
Malaria		1		1	20	3	65		
Tularemia									
Lyme disease							9		
Lyssavirus infection(excluding rabies)									
Rift valley fever									
Melioidosis									
Legionellosis		2		1	46	23	685		
Leptospirosis					4		17		
Rocky mountain spotted fever									

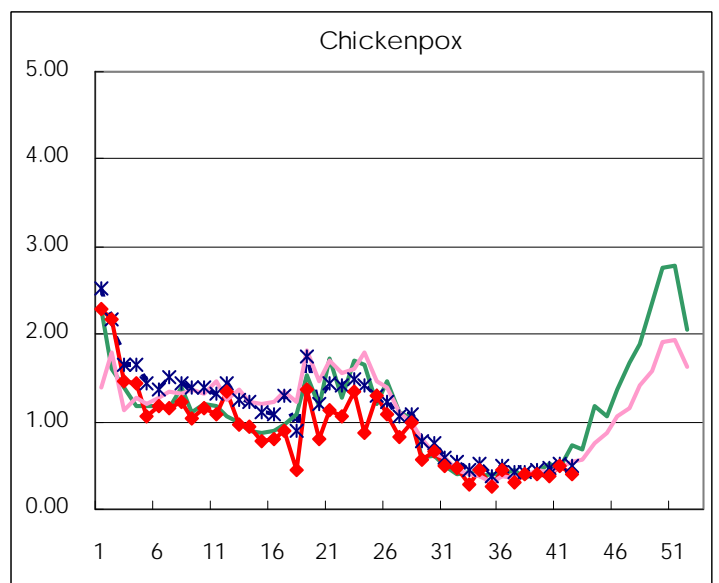
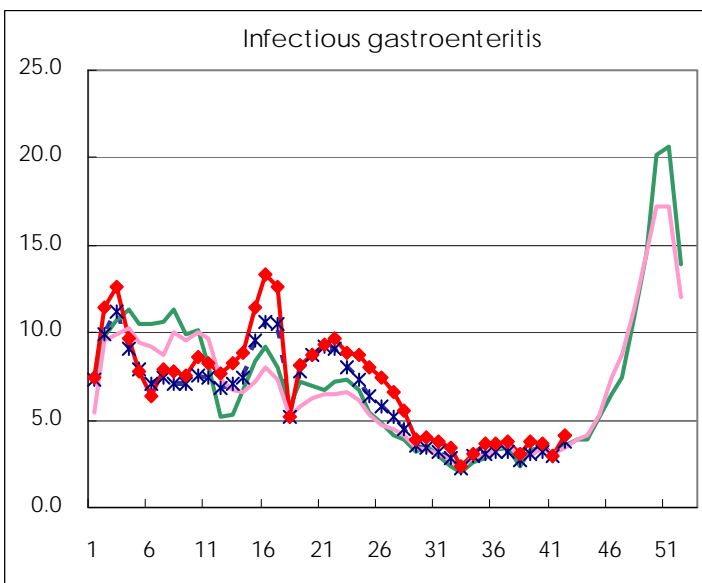
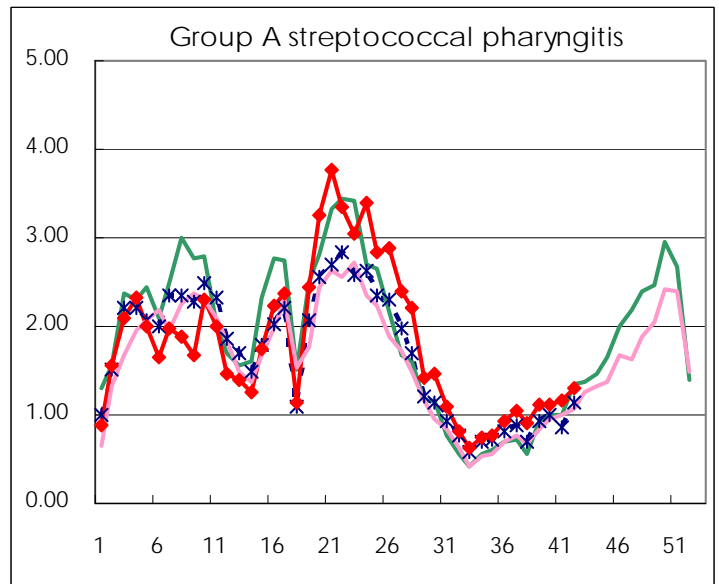
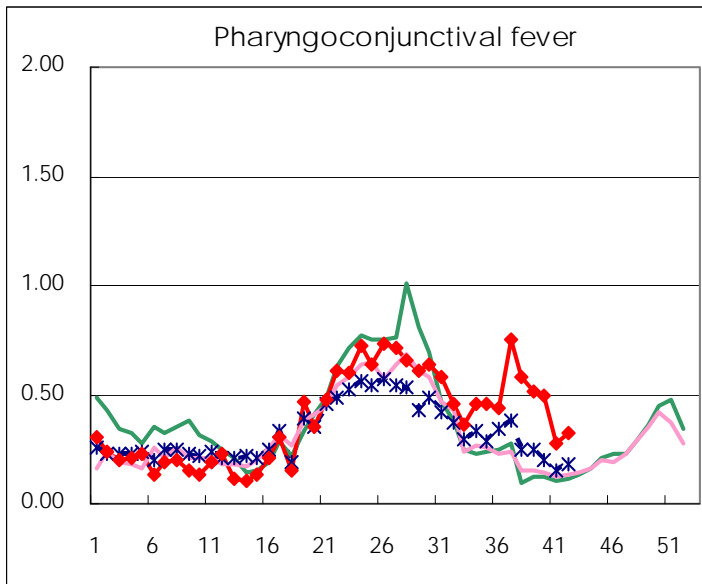
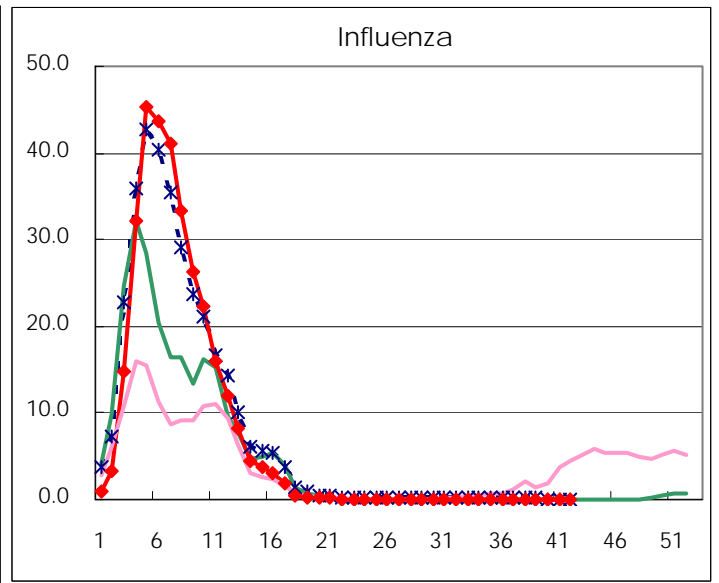
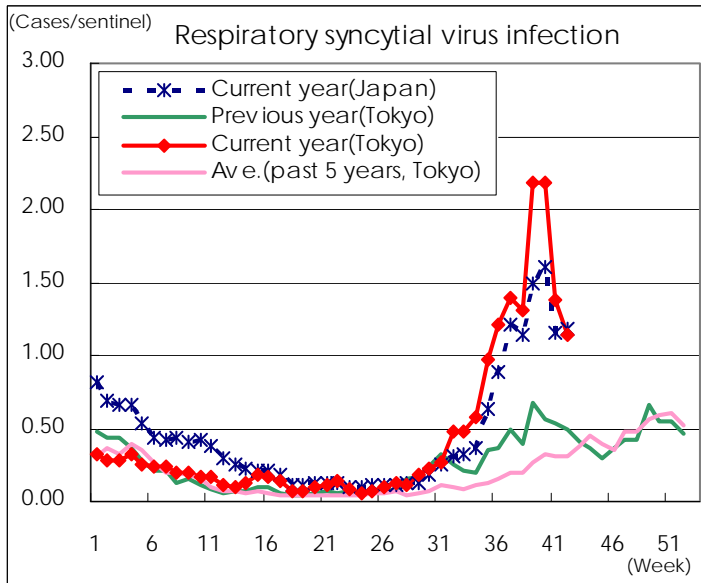
Category	Diseases	Tokyo				Japan		
		39th	40th	41st	42nd	Cum 2012	42nd	Cum 2012
V	Amebiasis	4	3	5	2	155	6	708
	Viral hepatitis(excluding hepatitis A and E)	1	3		1	42	2	177
	Acute encephalitis(excluding JE and WNE)		1			27	2	299
	Cryptosporidiosis					2		6
	Creutzfeldt-Jakob disease		1		1	13	2	147
	Severe invasive streptococcal infections(TSLS)		1	1		19		204
	Acquired immunodeficiency syndrome (AIDS)	9	9	13	15	376	19	1,124
	Giardiasis			1		11	3	56
	Meningococcal meningitis							10
	Congenital rubella syndrome						1	1
	Syphilis	11	7	10	2	234	8	691
	Tetanus	1				4	1	89
	Vancomycin-resistant S. aureus infection							
	Vancomycin-resistant Enterococcus infection		1			9	1	76
	Rubella	22	17	18	22	479	35	1,889
	Measles		2	2	1	73	3	274

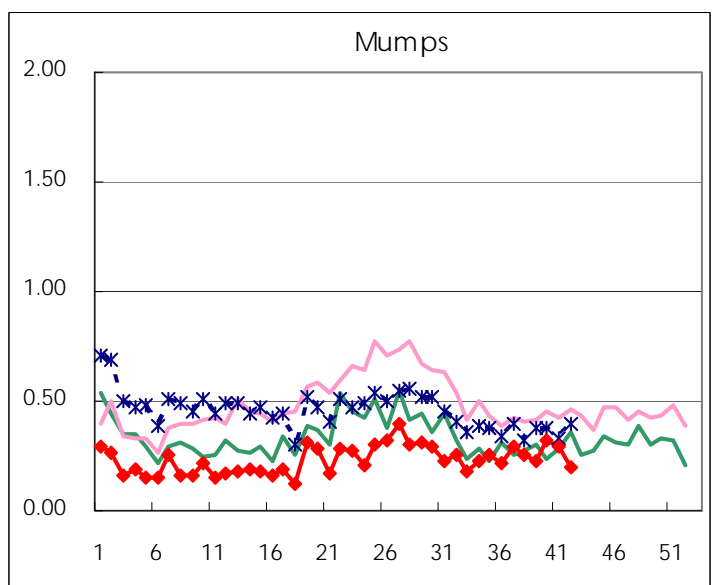
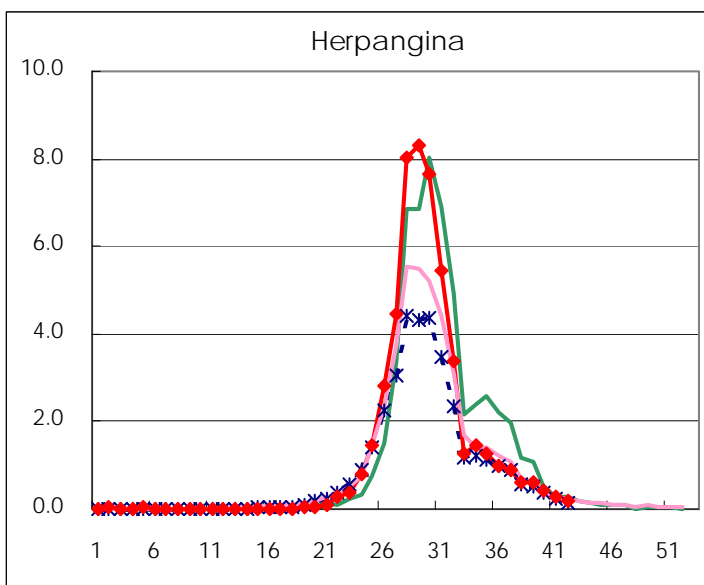
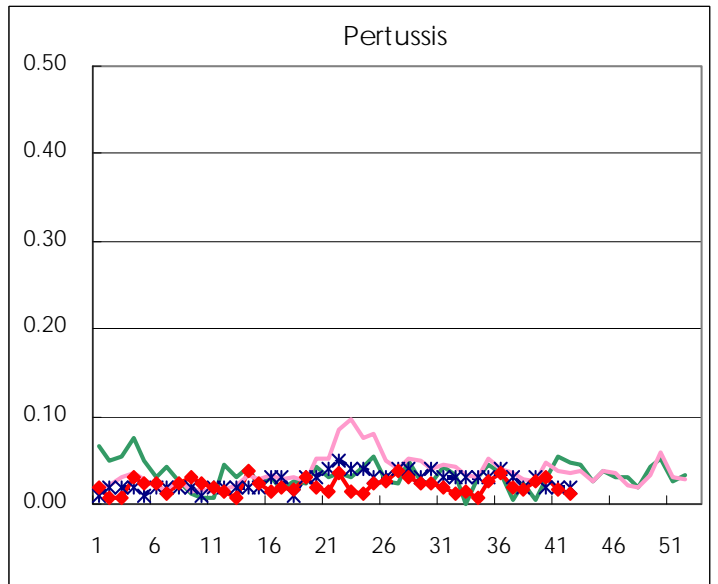
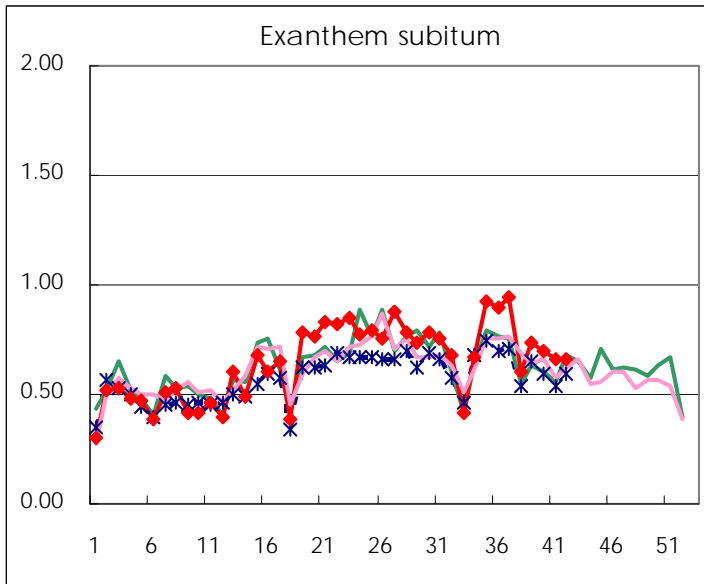
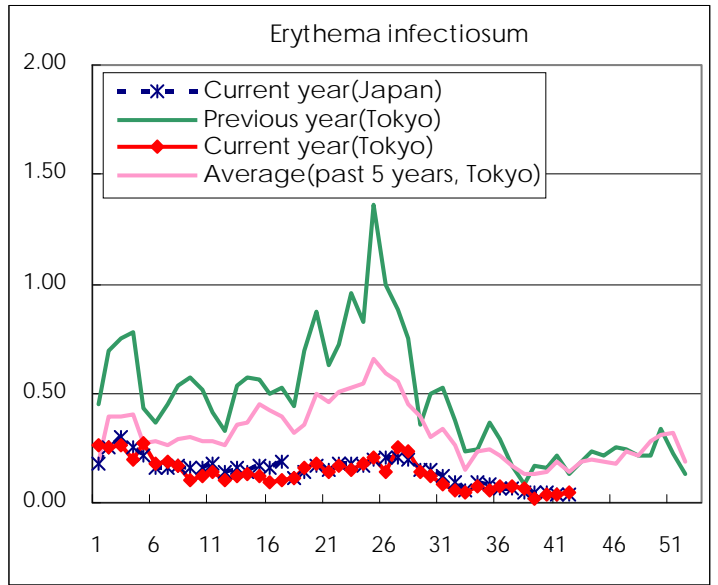
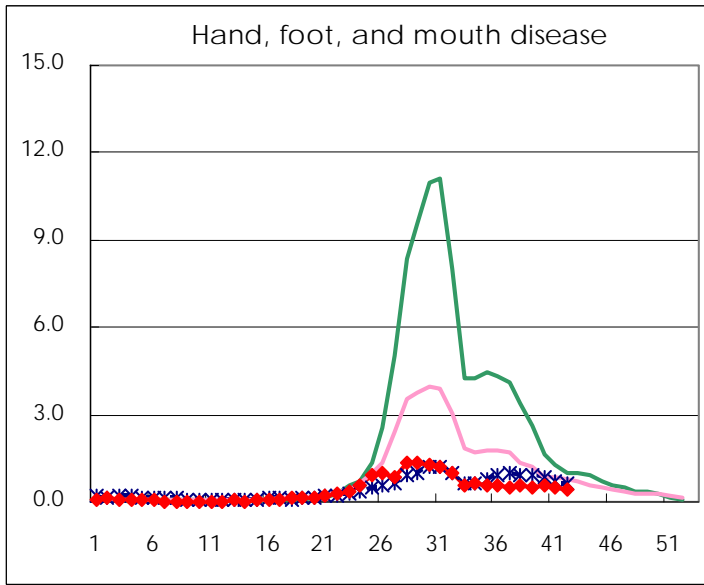
Number of patients with the diseases to be reported
by the designated clinics and hospitals

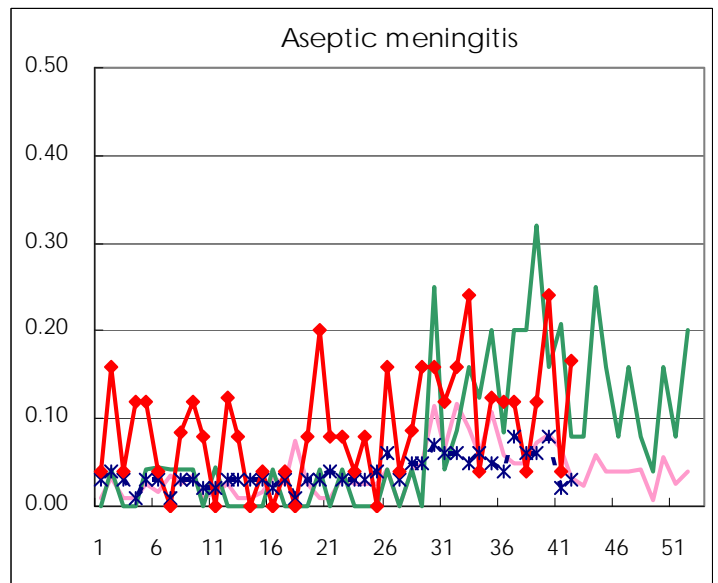
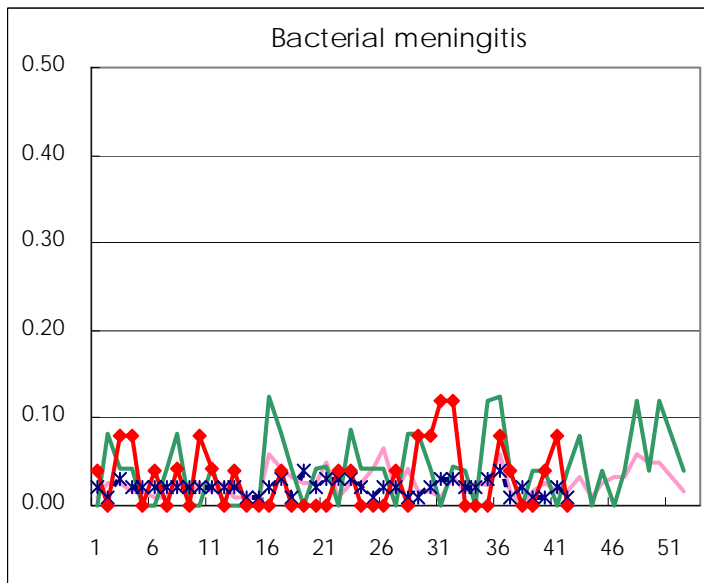
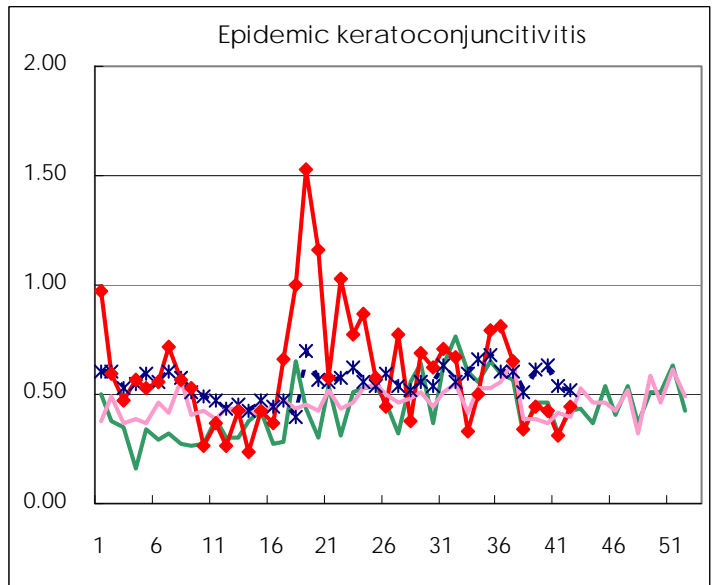
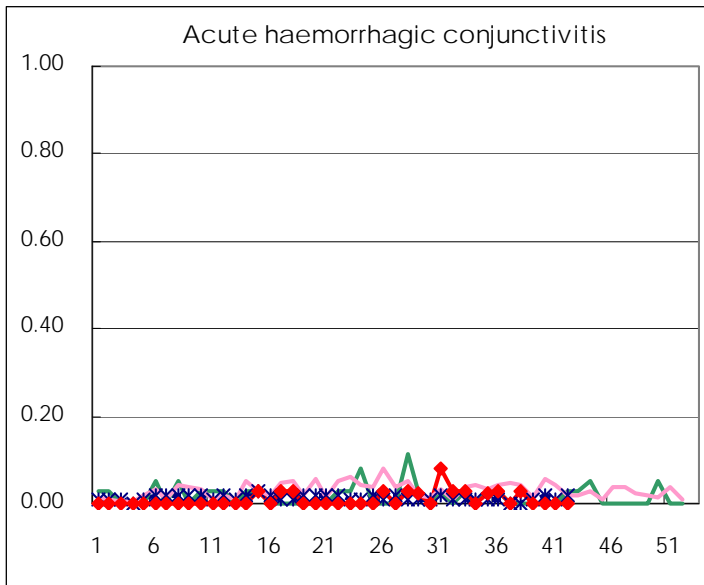
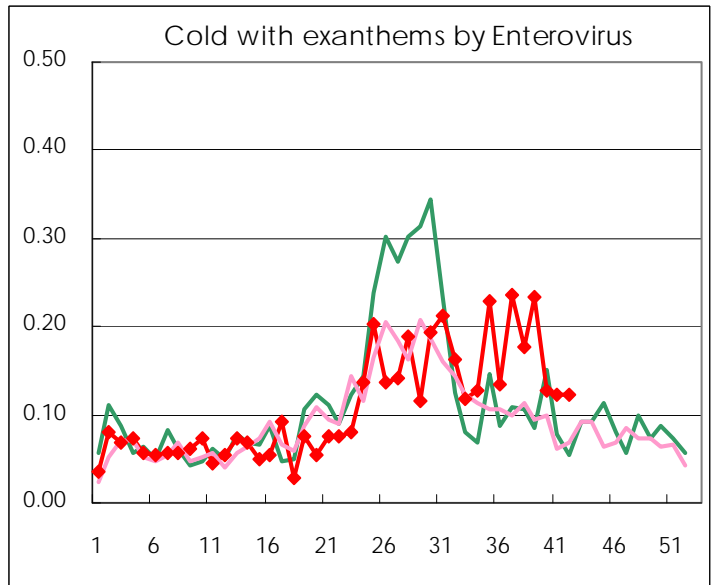
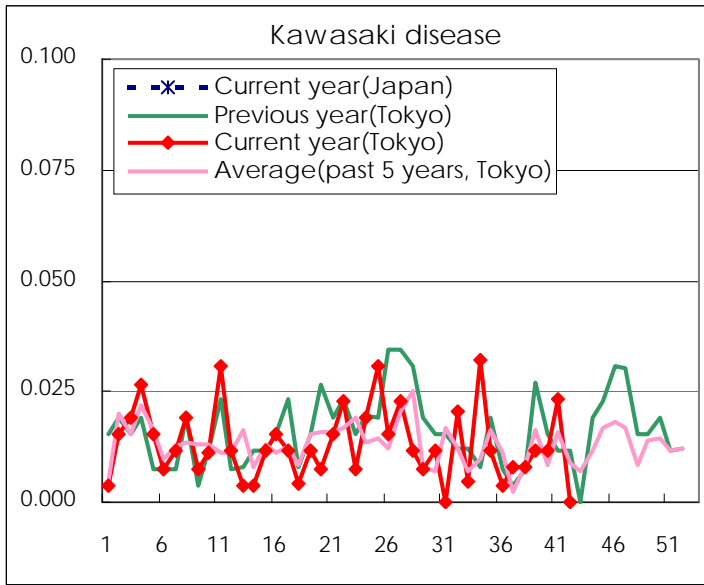
Diseases	Tokyo				
	39th	40th	41st	42nd	/sentinel
Respiratory syncytial virus infection	569	567	359	297	1.15
Pharyngoconjunctival fever	133	129	72	85	0.33
Group A streptococcal pharyngitis	292	288	300	338	1.31
Infectious gastroenteritis	998	947	770	1,073	4.14
Chickenpox	106	99	128	103	0.40
Hand, foot, and mouth disease	134	148	128	103	0.40
Erythema infectiosum	5	10	9	13	0.05
Exanthem subitum	191	181	172	172	0.66
Pertussis	7	8	4	3	0.01
Herpangina	156	115	79	46	0.18
Mumps	58	83	76	51	0.20
Kawasaki disease	3	3	6		
Cold with exanths by Enterovirus	61	33	32	32	0.12
Influenza	15	11	17	19	0.05
Acute hemorrhagic conjunctivitis					
Epidemic keratoconjunctivitis	17	16	12	17	0.45
Bacterial meningitis		1	2		
Aseptic meningitis	3	6	1	4	0.17
Mycoplasma pneumonia	29	31	30	31	1.29
Chlamydial pneumonia (excluding psittacosis)	2			1	0.04
Influenza-Associated Hospitalizations	1	3	1	1	0.04

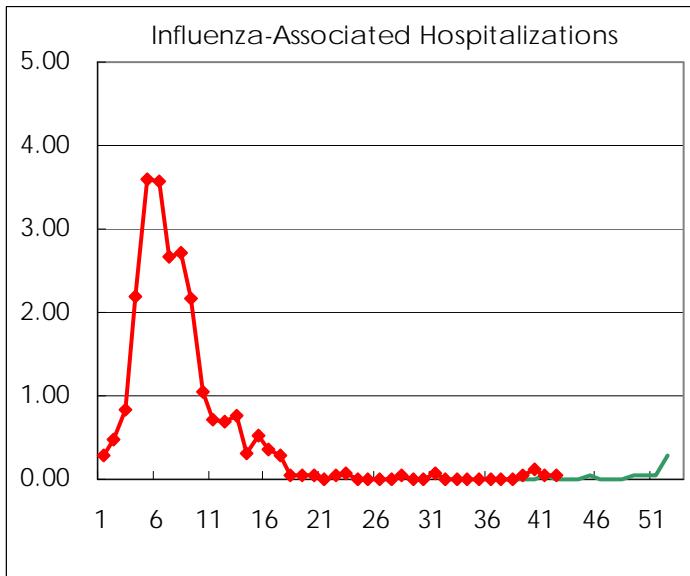
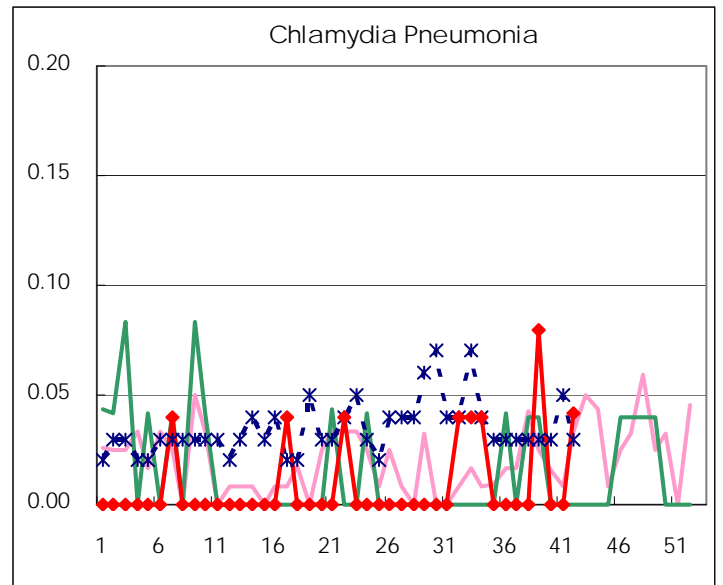
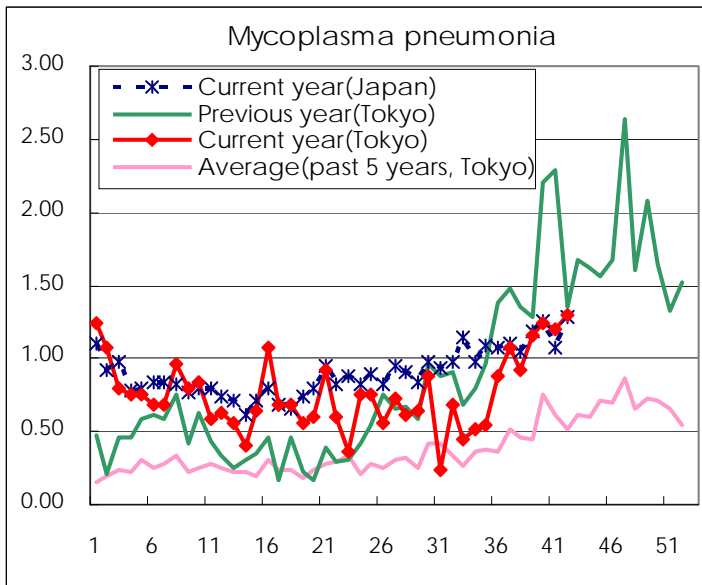
(Blank means 0.)

Disease Trend Graph (weekly reported cases per sentinel in comparison)









Number of sentinel facilities for weekly reporting		
Types of sentinels	Number of sentinels	Sentinels having reported
Pediatric	264	259
Influenza	419	414
Ophthalmic	39	38
Specially-designated	25	24

Tokyo Metropolitan Government
Infectious Disease Surveillance Center