
INFECTIOUS DISEASES WEEKLY REPORT

TOKYO IDWR

Tokyo Metropolitan Infectious Disease Surveillance Center

1 November 2012 / Number 43

Surveillance System in Tokyo, Japan

The infectious diseases which all physicians must report

All physicians must report to health centers the incidence of the diseases which are shown at page one. Health centers electronically report the individual cases to Tokyo Metropolitan Infectious Disease Surveillance Center.

The infectious diseases required to be reported by the sentinels

The numbers of patients who visit the sentinel clinics or hospitals during a week are reported to health centers in Tokyo. And they electronically report the numbers to Tokyo Metropolitan Infectious Disease Surveillance Center. We have about 500 sentinel clinics and hospitals in Tokyo.

1st Week is early January and 52nd Week is end of December.

Tokyo Metropolitan Institute of Public Health

TEL:81-3-3363-3213 FAX:81-3-5332-7365

e-mail:idsc@tokyo-eiken.go.jp

URL:idsc.tokyo-eiken.go.jp/

Number of patients with the diseases which all physicians must report

Category	Diseases	Tokyo				Japan		
		40th	41st	42nd	43rd	Cum 2012	43rd	Cum 2012
I	Ebola hemorrhagic fever							
	Crimean-Congo hemorrhagic fever							
	Smallpox							
	South American hemorrhagic fever							
	Plague							
	Marburg disease							
	Lassa fever							
II	Acute poliomyelitis							
	Tuberculosis	87	65	76	71	3,741	344	23,902
	Diphtheria							
	Severe Acute Respiratory Syndrome(SARS)							
	Avian influenza H5N1							
III	Cholera							3
	Shigellosis	2	1	3	1	59	2	183
	Enterohemorrhagic Escherichia coli infection	10	6	27	6	235	59	3,415
	Typhoid fever				1	10	2	29
	Paratyphoid fever				1	9	1	18
IV	Hepatitis E	1	2		1	15	1	96
	West Nile fever							
	Hepatitis A			1		29	1	139
	Echinococcosis							11
	Yellow fever							
	Psittacosis							6
	Omsk hemorrhagic fever							
	Relapsing fever							
	Kyasanur forest disease							
	Q fever							
	Rabies							
	Coccidioidomycosis					1		2
	Monkeypox							
	Hemorrhagic fever with renal syndrome							
	Western equine encephalitis							
	Tick-borne encephalitis							
	Anthrax							
	Chikungunya fever	1	1	1		3		7
	Scrub typhus(Tsutsugamushi disease)					3	3	206
	Dengue fever	1	4	1	2	47	5	188
	Eastern equine encephalitis							
	Avian influenza (excluding H5N1)							
	Nipah virus infection							
	Japanese spotted fever						7	146
	Japanese encephalitis							2
	Hantavirus pulmonary syndrome							
	Herpes B virus infection							
	Glanders							
	Brucellosis							
	Venezuelan equine encephalitis							
	Hendra virus infection							
	Epidemic typhus							
Botulism							3	
Malaria	1		1		20	2	67	
Tularemia								
Lyme disease							9	
Lyssavirus infection(excluding rabies)								
Rift valley fever								
Melioidosis								
Legionellosis	2		2		47	12	699	
Leptospirosis					4	4	21	
Rocky mountain spotted fever								

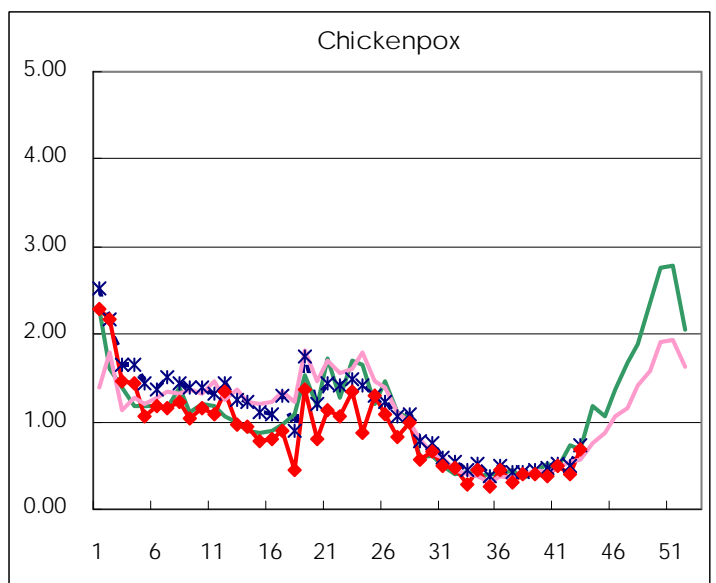
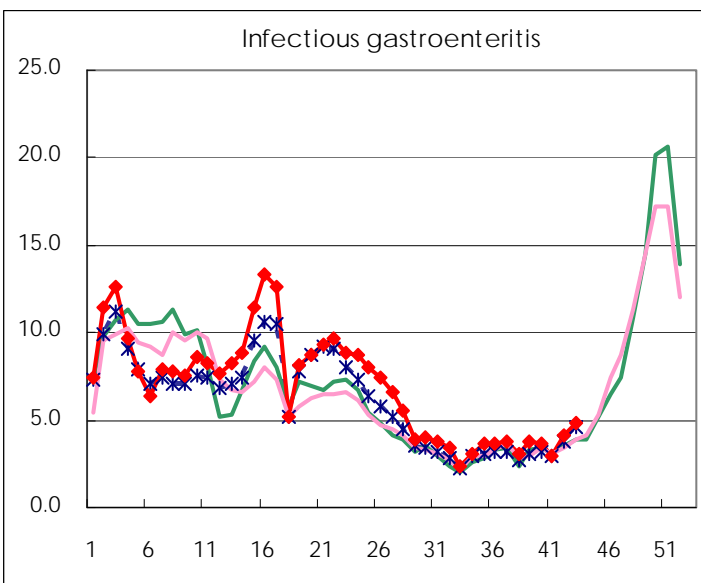
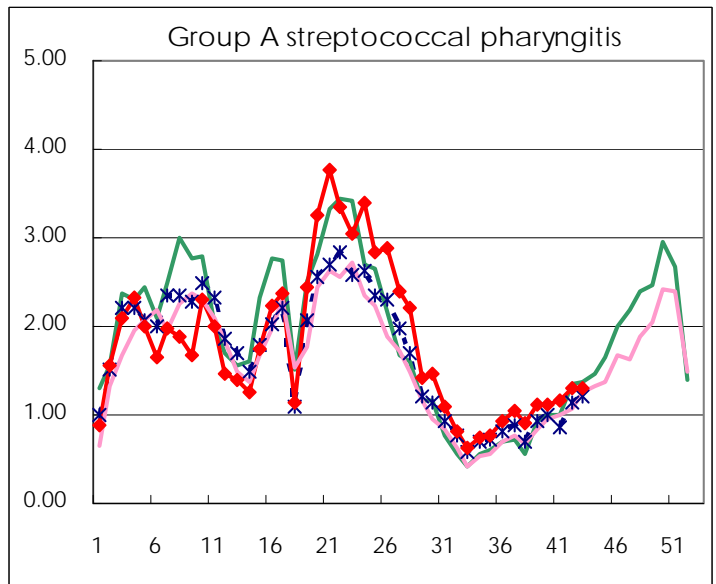
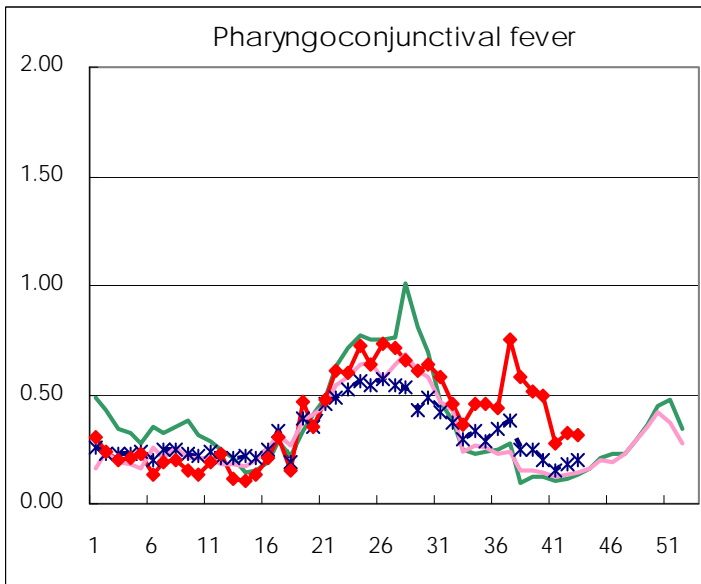
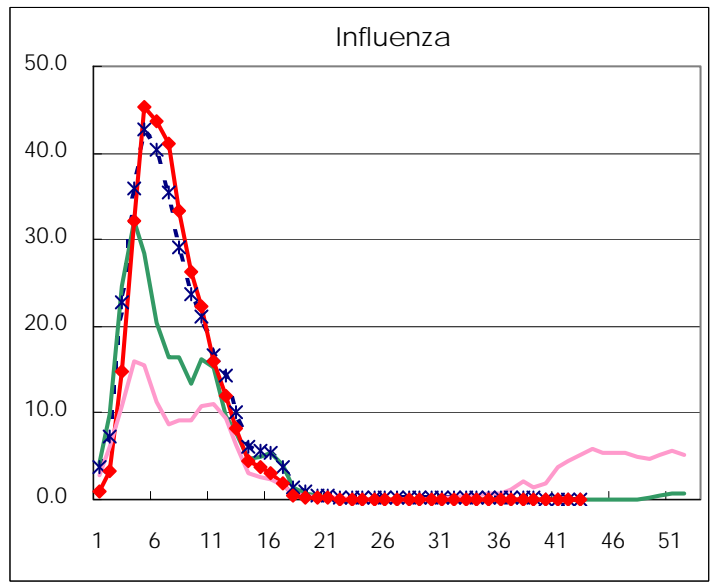
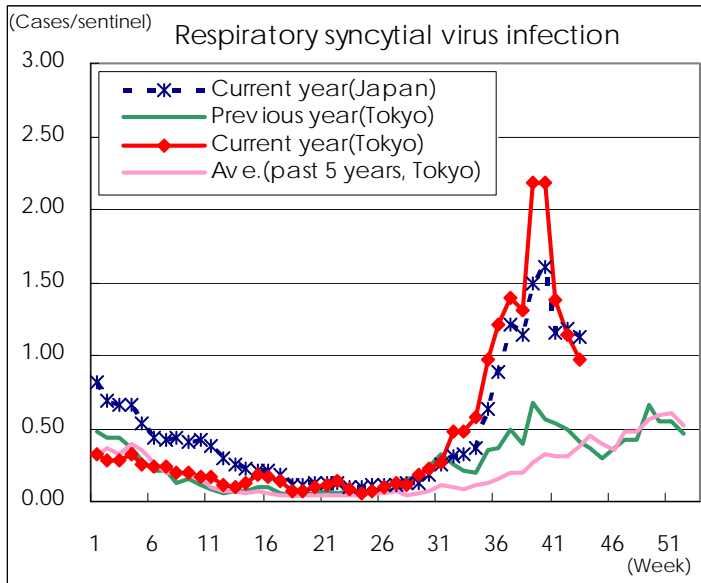
Category	Diseases	Tokyo					Japan	
		40th	41st	42nd	43rd	Cum 2012	43rd	Cum 2012
V	Amebiasis	3	5	2	3	158	15	730
	Viral hepatitis(excluding hepatitis A and E)	3		1	1	43	2	182
	Acute encephalitis(excluding JE and WNE)	1			1	28		303
	Cryptosporidiosis					2		6
	Creutzfeldt-Jakob disease	1		1		13	3	151
	Severe invasive streptococcal infections(TSLS)	1	1		1	20	2	209
	Acquired immunodeficiency syndrome (AIDS)	9	13	15	8	384	14	1,147
	Giardiasis		1			11	3	59
	Meningococcal meningitis							10
	Congenital rubella syndrome							1
	Syphilis	7	10	2	3	237	17	711
	Tetanus					4		91
	Vancomycin-resistant S. aureus infection							
	Vancomycin-resistant Enterococcus infection	1				9	1	77
	Rubella	17	18	24	16	497	20	1,930
	Measles	2	2	1		73	3	275

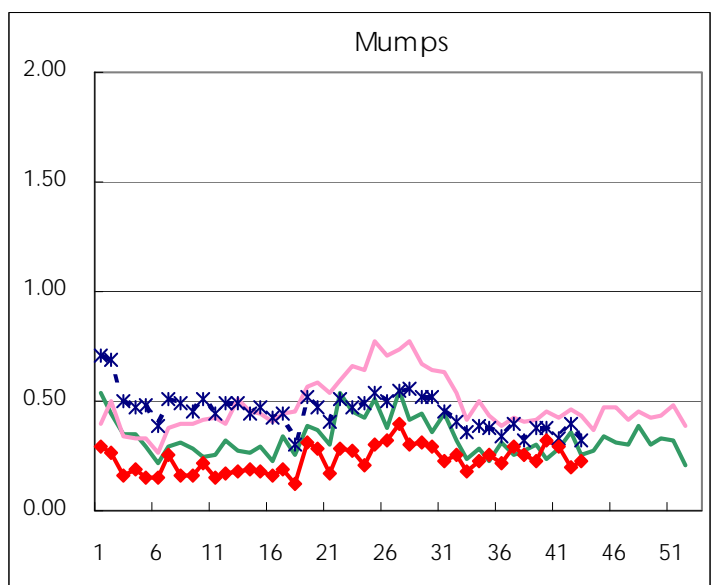
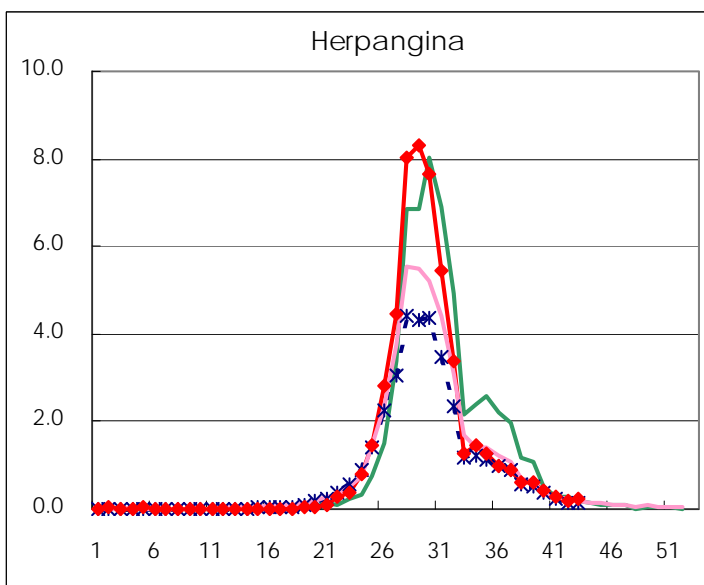
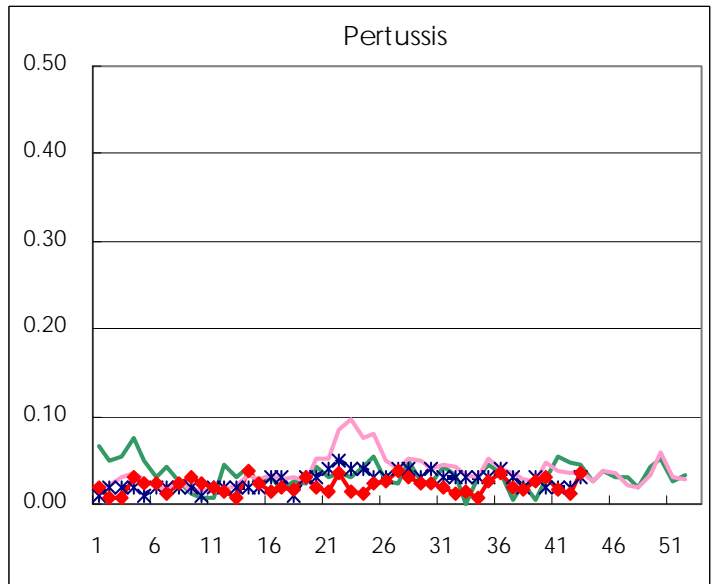
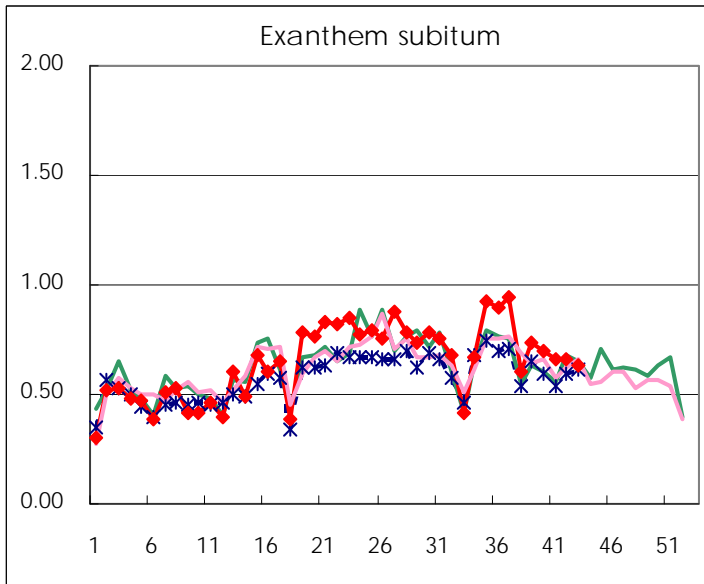
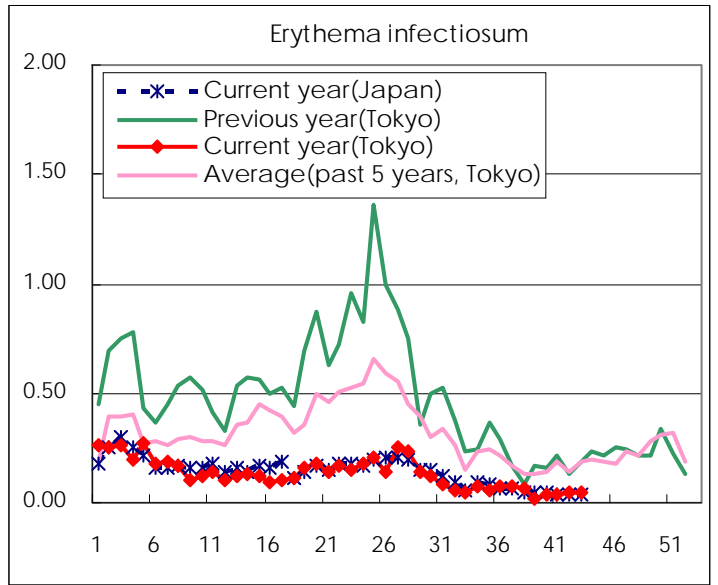
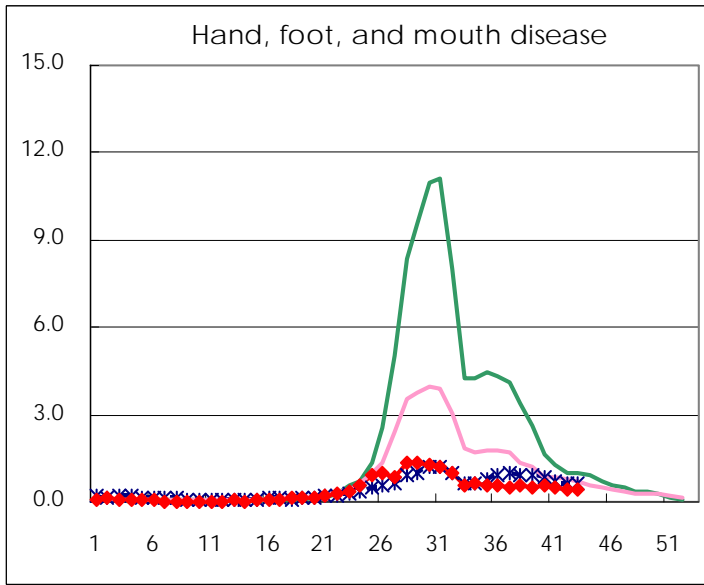
Number of patients with the diseases to be reported
by the designated clinics and hospitals

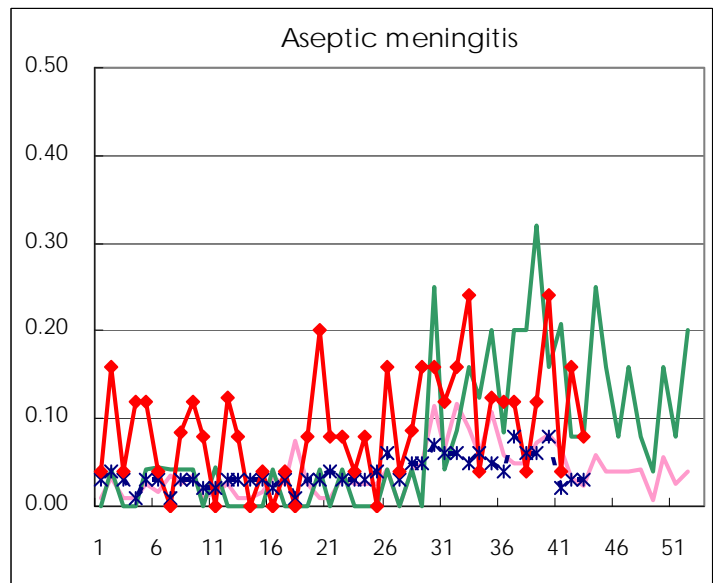
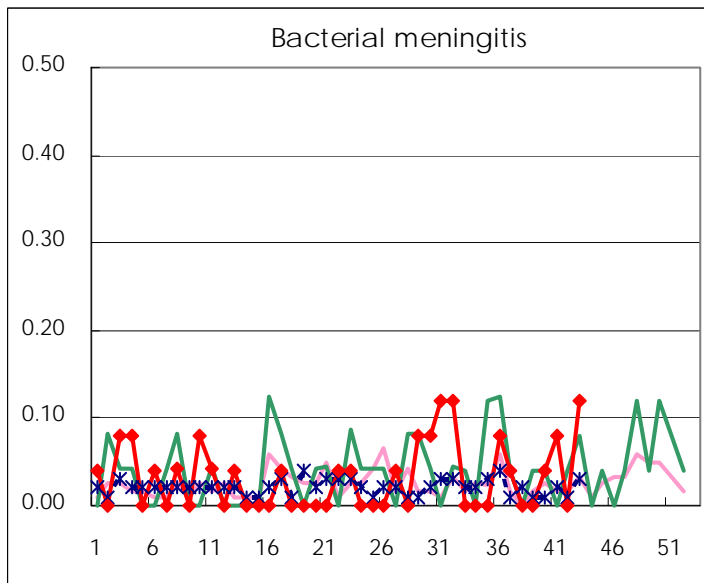
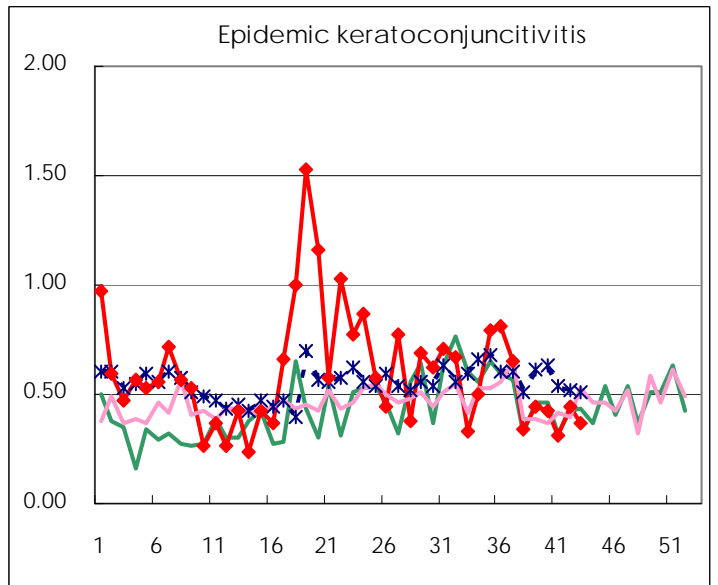
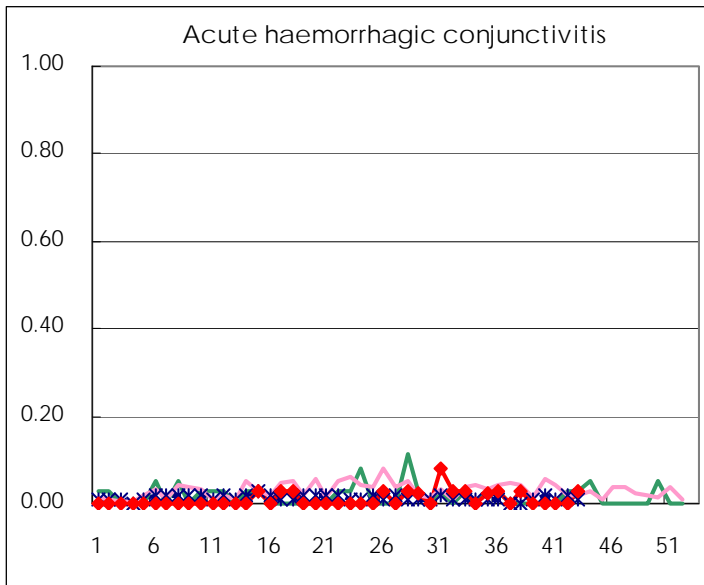
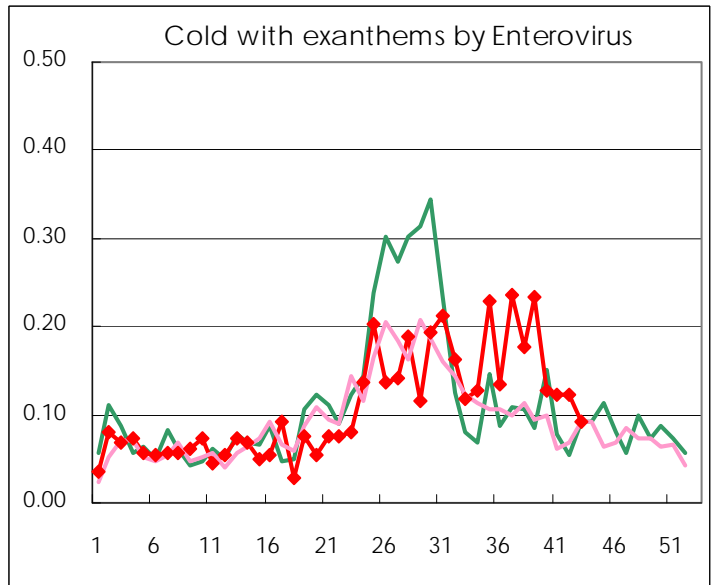
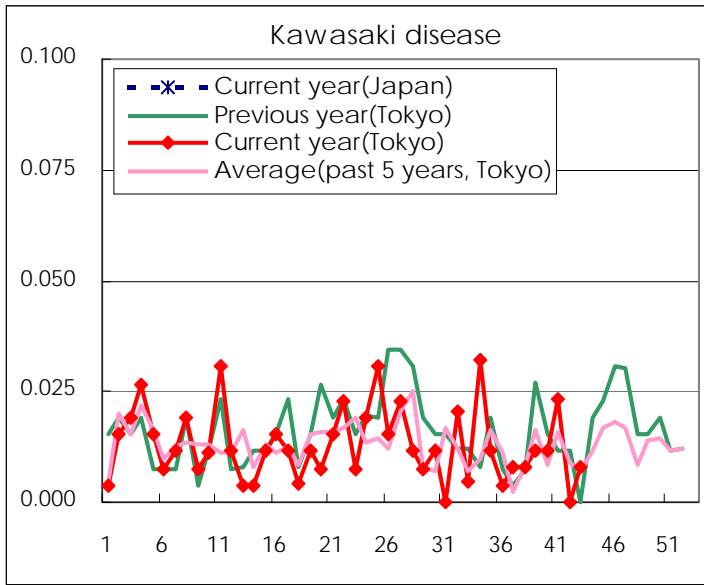
Diseases	Tokyo				
	40th	41st	42nd	43rd	/sentinel
Respiratory syncytial virus infection	567	359	297	254	0.98
Pharyngoconjunctival fever	129	72	84	82	0.32
Group A streptococcal pharyngitis	288	300	339	341	1.31
Infectious gastroenteritis	947	770	1,073	1,244	4.78
Chickenpox	99	128	103	178	0.68
Hand, foot, and mouth disease	148	128	103	103	0.40
Erythema infectiosum	10	9	13	12	0.05
Exanthem subitum	181	172	172	164	0.63
Pertussis	8	4	3	9	0.03
Herpangina	115	79	46	58	0.22
Mumps	83	76	51	59	0.23
Kawasaki disease	3	6		2	0.01
Cold with exanthems by Enterovirus	33	32	32	24	0.09
Influenza	11	17	19	16	0.04
Acute hemorrhagic conjunctivitis				1	0.03
Epidemic keratoconjunctivitis	16	12	17	14	0.37
Bacterial meningitis	1	2		3	0.12
Aseptic meningitis	6	1	4	2	0.08
Mycoplasma pneumonia	31	30	33	36	1.44
Chlamydial pneumonia (excluding psittacosis)			1	1	0.04
Influenza-Associated Hospitalizations	3	1	1		

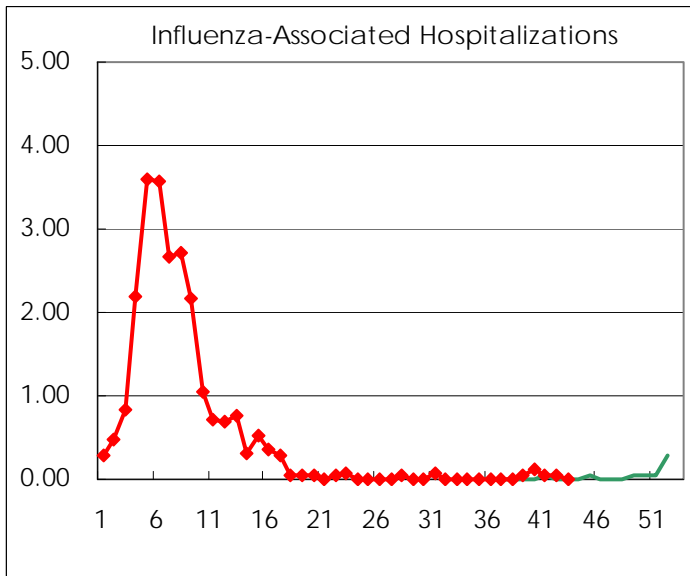
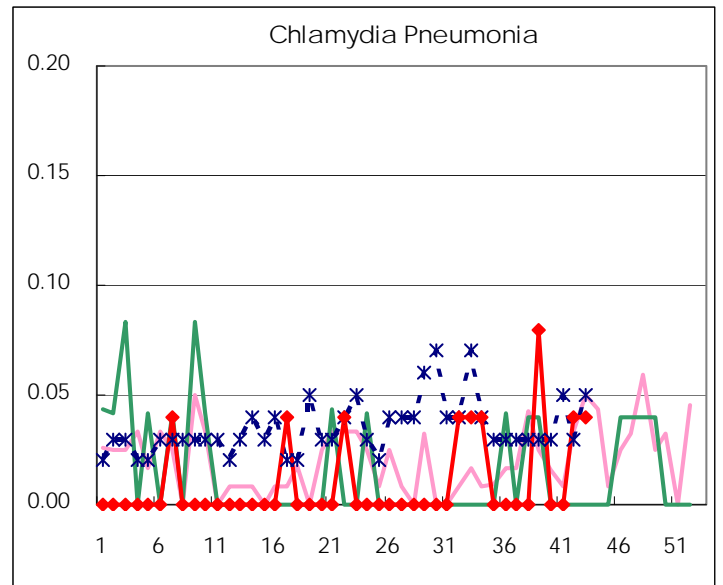
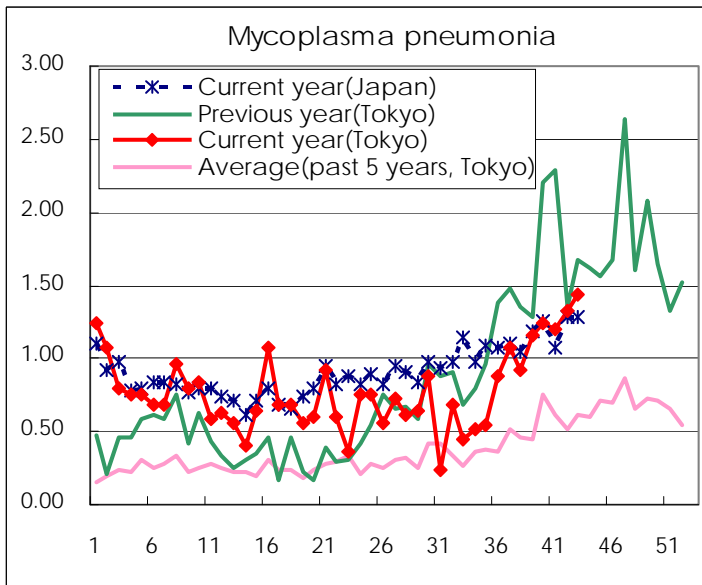
(Blank means 0.)

Disease Trend Graph (weekly reported cases per sentinel in comparison)









Number of sentinel facilities for weekly reporting		
Types of sentinels	Number of sentinels	Sentinels having reported
Pediatric	264	260
Influenza	419	414
Ophthalmic	39	38
Specially-designated	25	25

Tokyo Metropolitan Government
Infectious Disease Surveillance Center